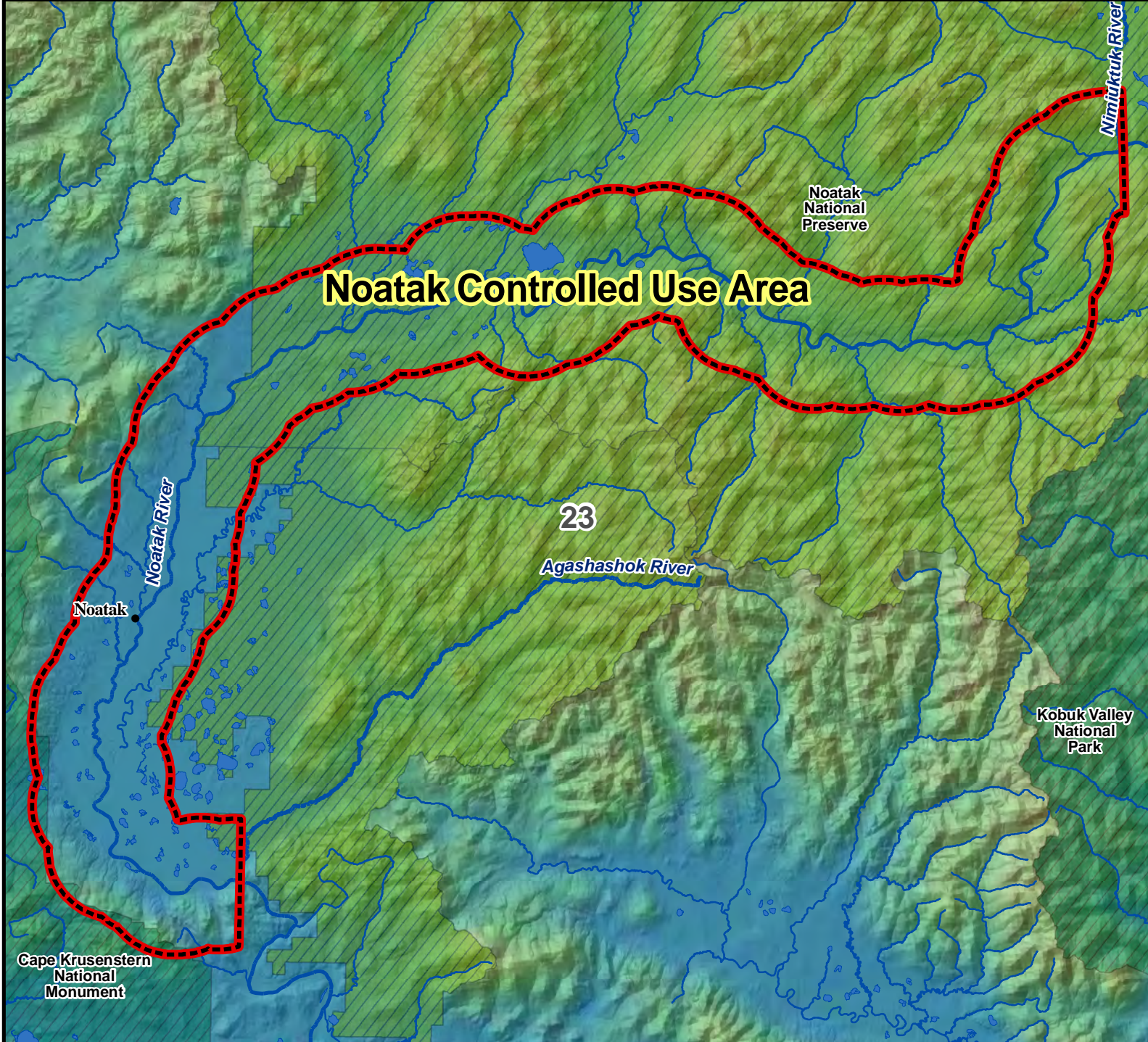


Unit 23 Noatak Controlled Use Area

This map is intended for hunt planning use, not for determining legal property or regulatory boundaries. Content is compiled from various sources and is subject to change without notice. See current hunting regulations for written descriptions of boundaries. Hunters are responsible for knowing the land ownership and regulations of the areas they intend to hunt.



AREA DESCRIPTION: Unit 23, the area consists of that portion of Unit 23 in a corridor extending five miles on either side of, and including, the Noatak River, beginning at the mouth of the Agashashok River and extending upstream to the mouth of the Nimiuktuk River.

The area is closed from August 15 through September 30 to the use of aircraft in any manner for big game hunting, including the transportation of big game hunters, their hunting gear, or parts of big game; however, this provision does not apply to the transportation of big game hunters, their hunting gear, or parts of big game to and between publicly owned airports.

