

Alaska Department of Fish and Game

Habitat Section
Southeast Region



110-16-10030 Tributary 1

ADDITION

Water body name:

Quad: Petersburg D-4

Upper Reach Latitude: 56.916450 **Longitude:** -133.279643

Lower Reach Latitude: 56.917823 **Longitude:** -133.281327

Survey date: 8/23/2023

Species & Lifestage:

Survey crew: EK, NJ

Findings: We surveyed this uncataloged stream using baited minnow traps and GPS and captured juvenile coho salmon (Figure 1). The stream channel is low gradient and forested with large gravel and cobble substrate (Table 1; Figures 2, 3).

Recommendations: Add this uncataloged stream to the anadromous waters catalog for rearing coho salmon (Figure 4).

Nomination: Pending

Table 1.—110-16-10030 tributary 1 survey data.

| Waypoint | Latitude | Longitude | Notes | Stream Width ft | Stream Substrate | Habitat Features | Gradient % | Sample Effort | Sample Results |
|----------|-----------|-------------|--|-----------------|------------------------|------------------|------------|---------------|----------------------|
| 699 | 56.916454 | -133.279663 | MT upstream of culvert ~50 ft. 2 hour soak. Did not have time to efish further upstream. | 6-8 | Large Gravel Cobble | | 1-2 | MT | 9 CO 1 DV 1 CT |



Figure 1.—Juvenile coho salmon captured at waypoint 699.



Figure 2.—Channel at waypoint 699, facing upstream.



Figure 3.—Culvert at waypoint 786.

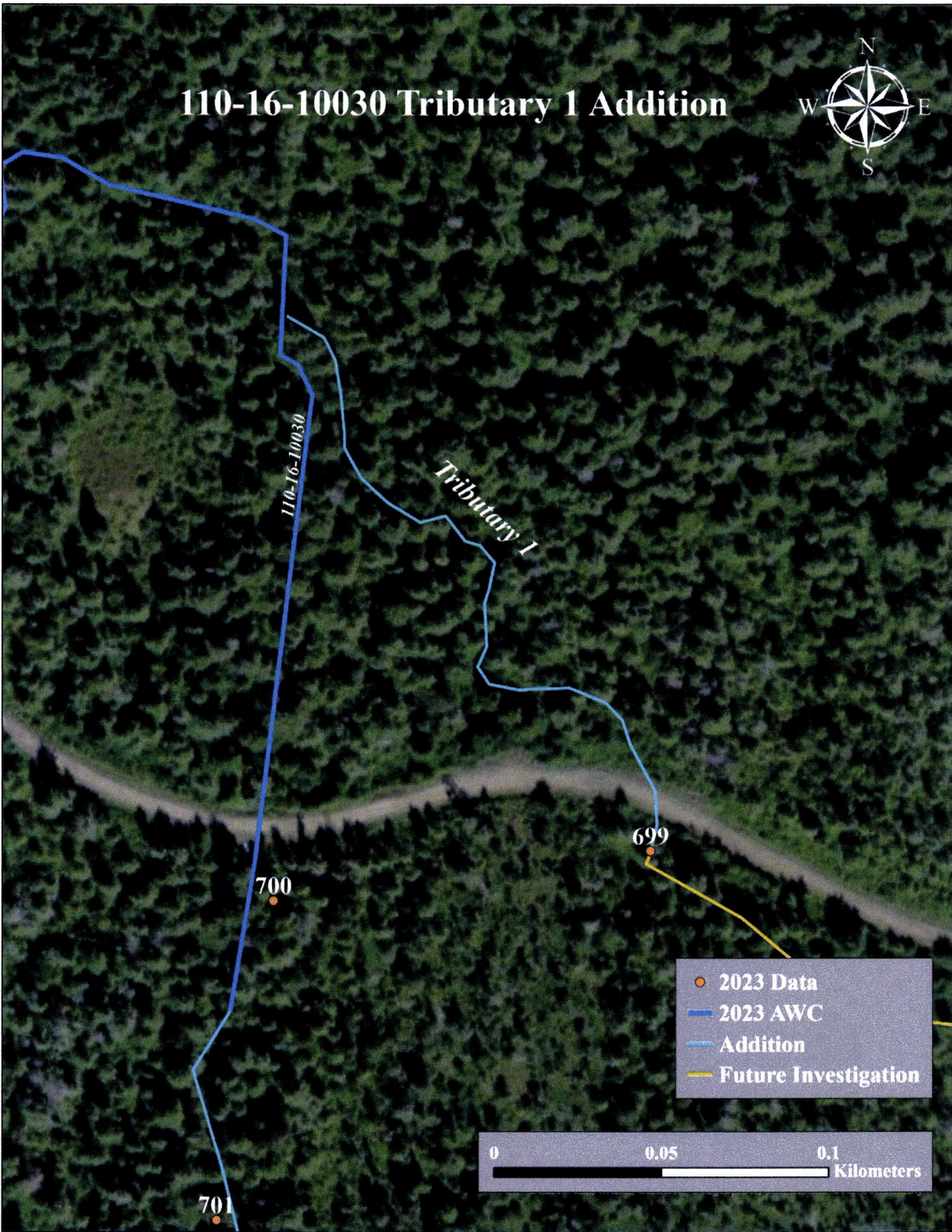


Figure 4.-110-16-10030 tributary 1 addition map.



~CORRECT database point data in existing AWC Stream #110-16-10030 for COHO salmon PRESENT.

~ADD new AWC Stream #110-16-10030-2005 with COHO salmon REARING.

-Please update using most recent .GDB with line, point, lake, polygon and barrier features located in O:\DSF\5\AWC\Draft2025\GIS\Data\AWC2025_WorkingUpdate_DayMonthYear.gdb

COp
LOWER
110-16-10030

PETERSBURG D-4

110-16-10025

110-16-10025

110-16-10025

Southeast

DELETE
delete old mid-end
COp
MIDE Op
new MIDE
COR
LOWER
COR
MIDE

110-16-10030-2005

699
COR
UPPER

700
COR
UPPER
DELETE
delete old upper

110-16-10030

701
702

703
704

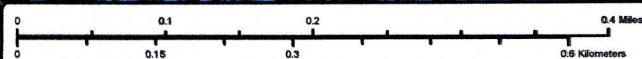
705
706

707
708

709
710

COR
new UPPER

*See Also
Nom #24-711



Nom #24-712

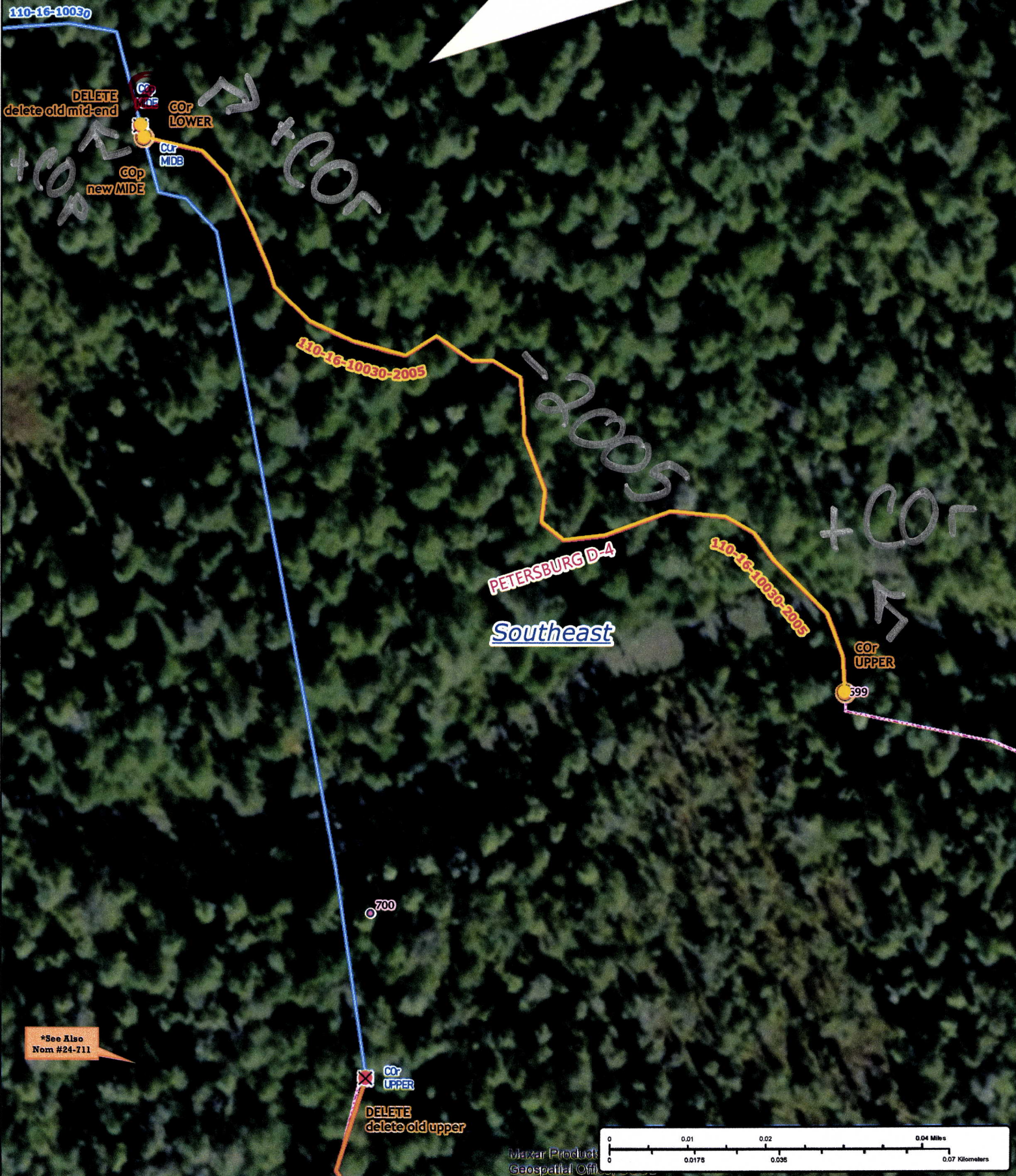
Map #1



~CORRECT database point data in existing AWC Stream #110-16-10030 for COHO salmon PRESENT.

~ADD new AWC Stream #110-16-10030-2005 with COHO salmon REARING.

-Please update using most recent .GDB with line, point, lake, polygon and barrier features located in O:\DSFIR5\AWC\Draft2025\GIS\Data\AWC2025_WorkingUpdate_DayMonthYear.gdb



Nom #24-712

Map #2