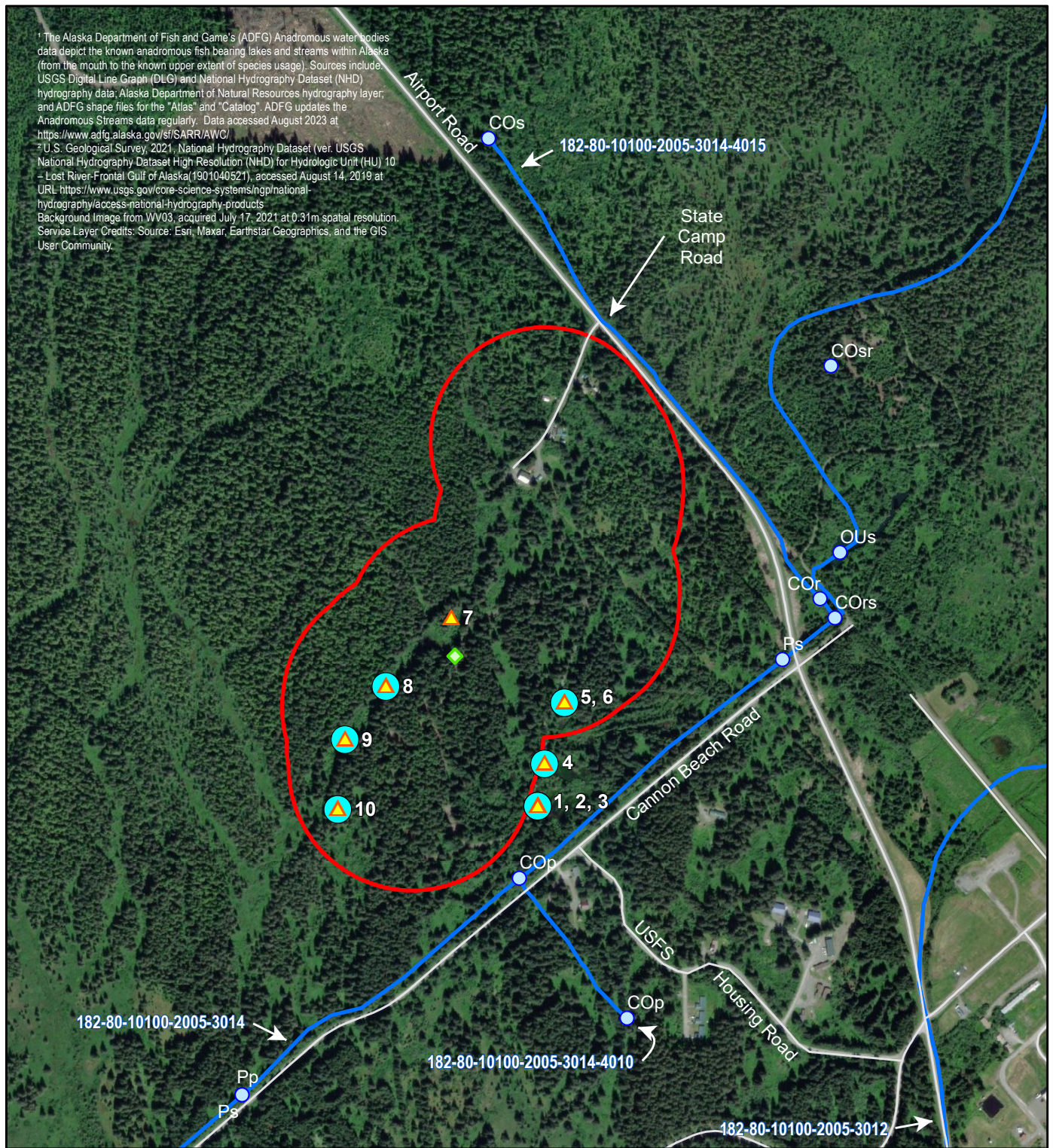


¹ The Alaska Department of Fish and Game's (ADFG) Anadromous water bodies data depict the known anadromous fish bearing lakes and streams within Alaska (from the mouth to the known upper extent of species usage). Sources include: USGS Digital Line Graph (DLG) and National Hydrography Dataset (NHD) hydrography data; Alaska Department of Natural Resources hydrography layer; and ADFG shape files for the "Atlas" and "Catalog". ADFG updates the Anadromous Streams data regularly. Data accessed August 2023 at <https://www.adfg.alaska.gov/sf/SARR/AWC/>.

² U.S. Geological Survey, 2021, National Hydrography Dataset (ver. USGS National Hydrography Dataset High Resolution (NHD) for Hydrologic Unit (HU) 10 - Lost River-Frontal Gulf of Alaska (1901040521), accessed August 14, 2019 at URL <https://www.usgs.gov/core-science-systems/nghp/national-hydrography/access-national-hydrography-products>. Background Image from WV03, acquired July 17, 2021 at 0.31m spatial resolution. Service Layer Credits: Source: Esri, Maxar, Earthstar Geographics, and the GIS User Community.



Field Surveys September 12–13, 2023

- ▲ Trap
- ◆ Pond
- ⬭ Survey Area
- Coho Captured

NHD Streams²

Anadromous Waters Catalog¹

~ Anadromous Stream¹ (247-60-10250-2003) Stream Code

● Anadromous Salmon Point Observation¹

CO - Coho Salmon
OU - Eulachon
P - Pink Salmon

p - present
r - rearing
s - spawning

0 250 500 750 Feet
0 100 200 Meters



Aquatic Resources for the Yakutat Survey Area, Yakutat, Alaska 2023

map prepared by:
ABR — Environmental Research & Services

Fig4_Yakutat_Fish_23-286.mxd; 21 December 2023