



## 111-33-10300-2020

## Species Addition / Route Correction

**Water Body Name:**

**HUC12:** 190102060507 / 190102060702

**Species & Lifestage Observed:** SHps, RBTp

**MTR:** C043S071E / C043S072E / C042S072E

**Observation Date:** 05/23/2024

**Quad:** Taku River A-5 / A-6

**Observers:** Mark Hieronymus, Tyson Fick

**Observations:** We walked this stream from its confluence with 111-33-30300 to a point approximately 2km upstream with a GPS and sportfishing equipment and observed adult steelhead and resident rainbow trout. Many of the steelhead were paired on redds, and nearly all resident rainbow trout observed were in close proximity to these redded fish. During the course of observations, comparison of our GPS-derived stream line and the 2023 AWC arcs for 111-33-10300 and 111-33-10300-2020 suggests route corrections are needed for both streams. Observation locations and notes are in Table 1, fish, feature, and satellite imagery photos and a pair of maps showing observation locations and route corrections are in Figures 1-9.

Table 1.- 111-33-30300-2020 observation locations and notes.

Waypoint	Latitude	Longitude	Notes	Sample Effort	Sample Result
1	58.177965	-133.592632	Confluence of 111-33-10300 and 111-33-10300-2020. 5/23/24, 815am. Obs: MH, TF. H <sub>2</sub> O Temp: 5.9°C H <sub>2</sub> O Tannic, vis ~1.5-2m. 100% low OVC, R. Starting US Obs.		
2	58.181686	-133.583920	3 Adult SH on redd here, a pair and a single. 2 resident rainbow trout visible near redd as well. Pair spooked downstream after photo.	Visual	3 SH 2 RBT
3	58.182221	-133.583300	2 adult SH flushed from cover, advanced into deep pool, unable to relocate. Hooked and landed 1 resident RBT from pool, 15"-17", no pic.	Visual Hook and Line	2 SH 1 RBT
4	58.187235	-133.577993	4 adult SH on what appears to be one large redd - fish were paired when first observed. 3 RBT seen in redd area as well.	Visual	4 SH 3 RBT
5	58.189109	-133.574505	1 adult SH flushed downstream from here, unable to relocate. No pic.	Visual	1 SH
6	58.190102	-133.572414	2 adult SH in pool, spooked into downed tree and other LWD while trying to photograph. Above DIPAC weir here, close to lake - stream slows and becomes more slough-like. US end of obs.	Visual	2 SH



*Figure 1.- Looking downstream at waypoint 1, with 111-33-10300-2020 entering a side channel of 111-33-10300 from viewer's left.*



*Figure 2.- Looking upstream at confluence of 111-33-10300-2020 with a side channel of 111-33-10300, waypoint 1.*





Figure 3.- Looking upstream at 111-33-10300-2020 from waypoint 1, with 1.88m Tyson F. for scale.



Figure 4.- A pair of adult steelhead on a redd at waypoint 2. Red arrows point at fish.





*Figure 5.- A pair of adult steelhead flushed from cover at waypoint 3.*



*Figure 6.- Four adult steelhead on a large redd at waypoint 3. Red arrow points to steelhead partially obscured by branch in foreground.*

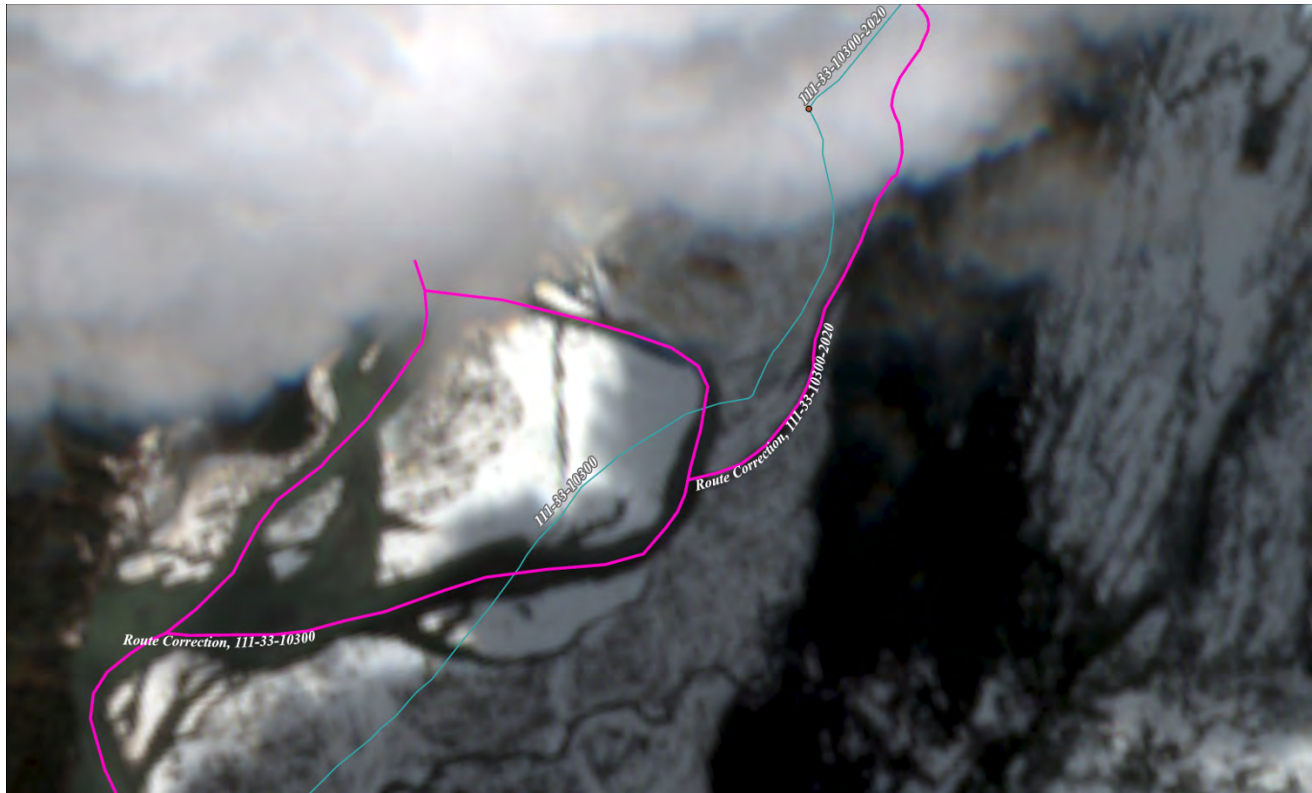


Figure 7.- Satellite imagery (Sentinel-2 L2A) from May 10<sup>th</sup>, 2024 showing observed channels of 111-33-10300 relative to the observed confluence of 111-33-10300-2020.



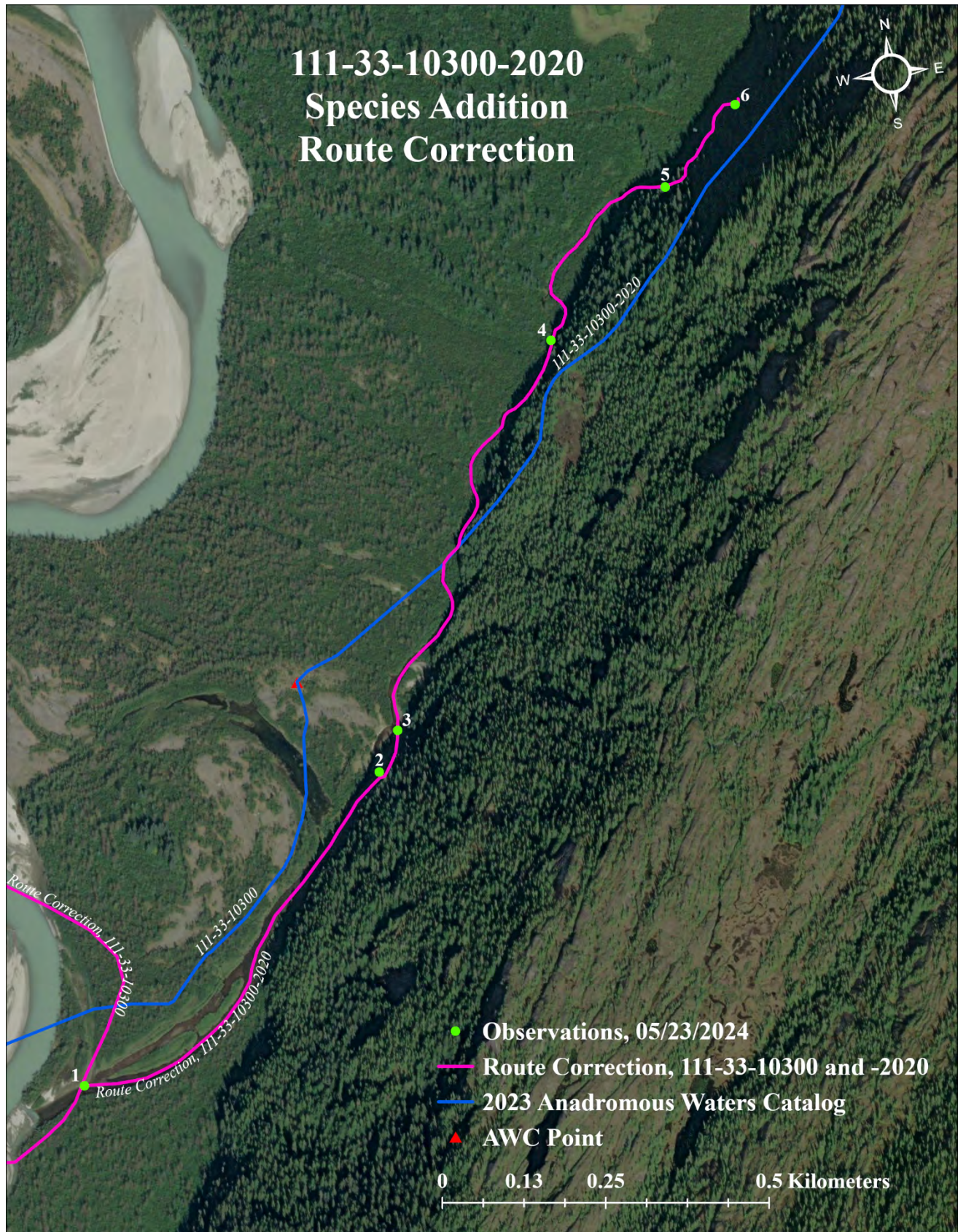


Figure 8.- A map of 111-33-10300-2020 showing observation locations and route correction.



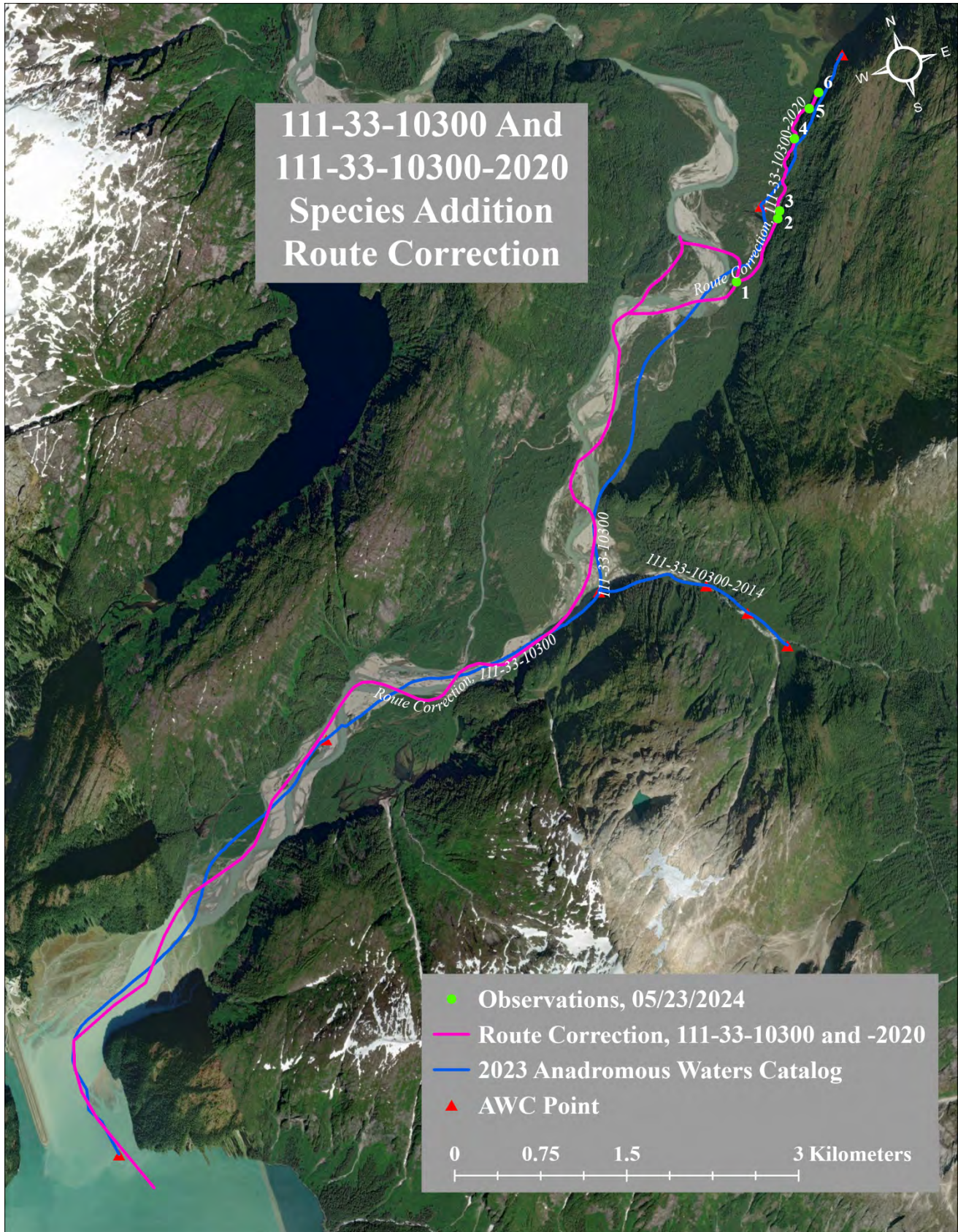


Figure 9.- A map of 111-33-10300 and 111-33-10300-2020 showing observation locations and route corrections.