



115-10-10440

Waters Addition / Route Correction

Water Body Name:

HUC12: 190103010705

Species & Lifestage Observed: CO_r

MTR: C037S062E

Observation Date: 06/27/2024

Quad: Juneau C-4 NW

Observers: Mark Hieronymus, Kevin Maier, David McKenna

Observations: We walked the lower confluence and upper reaches of this listed stream as well as an unlisted tributary with a GPS, and observed and captured juvenile coho salmon with hand nets. 115-10-10440 terminates in two ponds, neither with a defined inflow. The tributary of 115-10-10440 terminates in a beaver pond which also shares a hydrologic connection with 115-10-10430 (Waypoint 8, Figure 7) – I will be submitting a separate nomination for -10430 which will include more data on this pond. Comparison of the 2024 Anadromous Waters Catalog arc and our field-verified stream path for 115-10-10440 suggests an upper extension and route correction is needed. Observation locations and notes are in Table 1. Fish, stream, and feature photos and a map showing observation locations, waters additions, and route corrections are in Figures 1-11.

Table 1.- 115-10-10440 observation locations and notes.

Waypoint	Latitude	Longitude	Notes	Sample Effort	Sample Result
1	58.629209	-135.217866	At confluence of 115-10-10460 and 115-10-10440, 6/27/24, 9:25am. Obs: MH, KM, D McK. 75% OVC, Hi clouds, good observation conditions. Start of US obs.		
2	58.629342	-135.218205	Stream forks here - 115-10-10440 is RL (north) fork, unlisted trib is RR fork. Looking up unlisted fork, stream is 1-2m wide, 50cm deep, gravel substrate, incised 1-2m into meadow, clear H ₂ O - temp 4.5°C. Heading up unlisted fork.		
3	58.628538	-135.219993	Up UL fork - several juv CO seen between wpt 2 and here, 8-10 juv CO in this pool, 2 netted. Stream narrows to ~1m and ~15-40cm deep US of this point.	VI HN	8-10 CO 2 CO
4	58.628385	-135.222432	3 juv CO netted here. Stream characteristics continue, meadow incision now <1m.	HN	3 CO
5	58.628975	-135.223730	3 juv CO netted here. Stream now <20cm deep, ~1m wide, some grass in channel and lots canopied over stream.	HN	3 CO
6	58.629077	-135.224546	Trib enters on RR - trib is ~50-75cm wide, sand/muck substrate. Headed up trib.		
7	58.628836	-135.224729	2 juv CO netted here. Beyond this point, stream is more of a squishy vegetation-filled channel in the meadow than a flowing stream. Headed back down to wpt 6 and up mainstem.	HN	2 CO



Table 1.- 115-10-10440 observation locations and notes, continued.

Waypoint	Latitude	Longitude	Notes	Sample Effort	Sample Result
8	58.629390	-135.225594	At beaver pond outflow, a few juv CO seen ~10m DS, hand-netting ineffective in pond. End of US obs on this flow, headed over to 115-10-10440 upper section.	VI	3-5 CO
9	58.630720	-135.220904	Back on 115-10-10440 at old road prism - several juv CO seen here at close (<2m) range, fled to cover on netting attempts. Stream is ~1m wide, 10-20cm deep, partially canopied by meadow grass. Headed US.	VI	4-6 CO
10	58.630901	-135.222184	Stream forks here, headed up RL (north) fork.		
11	58.631152	-135.222320	Stream ends in pond, no discernible inlet stream. Dozens of juv CO seen, 2 netted. Pond is 20-30cm deep, muck bottom, some vegetation mostly near edges. Back down to wpt 10.	VI HN	25-30 CO 2 CO
12	58.630881	-135.222599	115-10-10440 appears to end at pond here, no discernible inlet stream. ~2doz juv CO seen in pond, 2 netted. US end of obs on this stream.	VI HN	20-25 CO 2 CO



Figure 1. - Looking NW up 115-10-10440 from its confluence with 115-10-10460 at waypoint 1.



Figure 2.- Juvenile coho salmon captured at waypoint 3.



Figure 3.- Looking upstream from waypoint 3 at general stream characteristics encountered in this reach.



Figure 4.- Looking upstream from waypoint 6 at stream characteristics between here and beaver pond at waypoint 8.



Figure 5.- Looking up tributary noted at waypoint 6. Waypoint 7 is between the two observers in the photo.



Figure 6.- Juvenile coho captured at waypoint 7.



Figure 7.- Looking upstream from waypoint 8 at beaver pond. This pond also shares a hydrologic connection with 115-1010430.



Figure 8.- Looking north from waypoint 11 at pond characteristics.



Figure 9.- Looking west from waypoint 12 at pond characteristics.



Figure 10.- Juvenile coho captured in pond at waypoint 12.

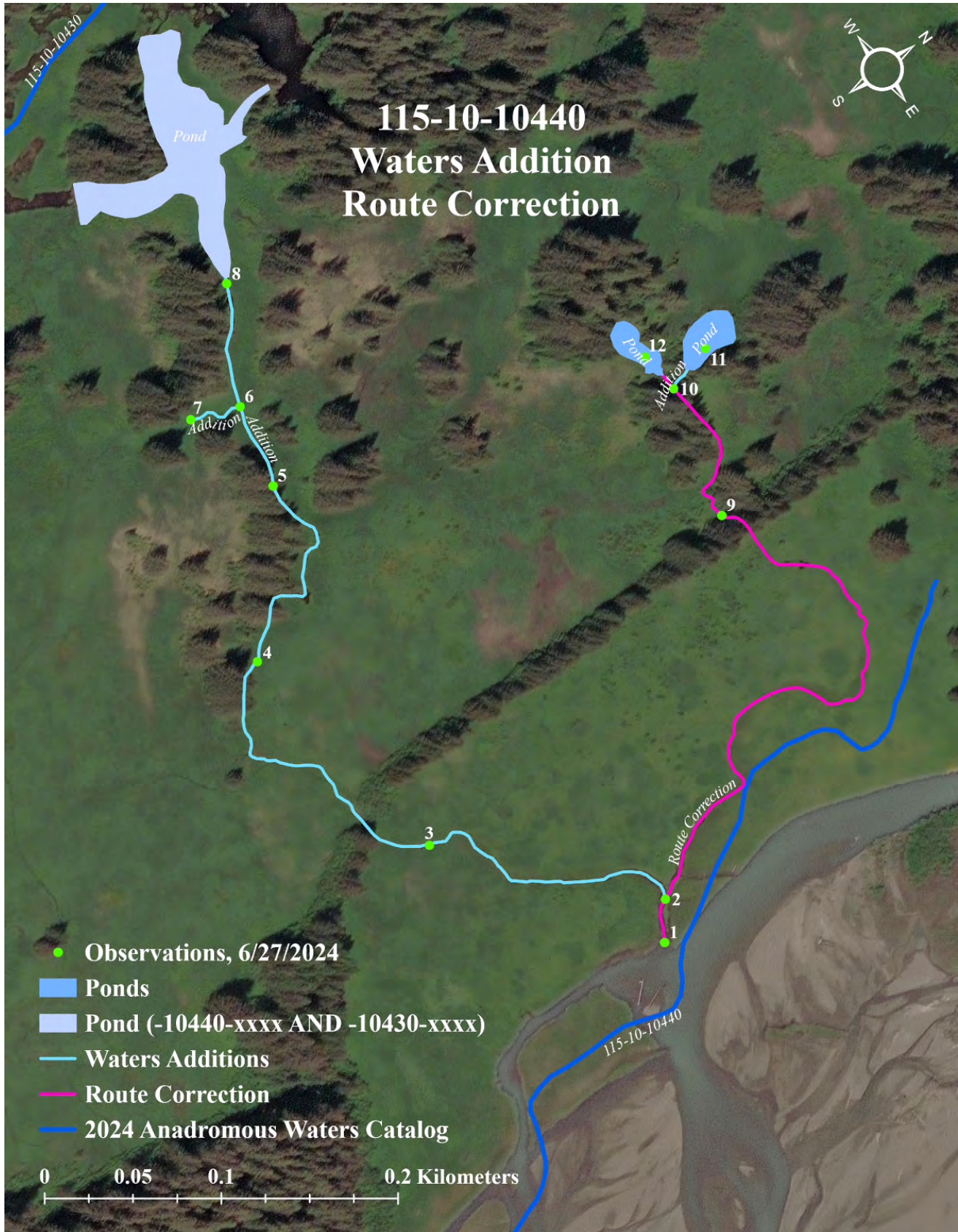


Figure 11.- Map of 115-10-10440 showing observation locations, waters additions, and route correction.