

Kuskokwim River Salmon Management Working Group

1 (800) 315-6338 (MEET) Code: 58756# (KUSKO)

ADF&G Bethel toll free: 1 (855) 933-2433

Meeting Agenda

Date: 08/27/2015

Time: 10:00am

Place: Bethel

Time Called to Order:

Chair: Bev Hoffman

Time Adjourned:

ROLL CALL TO ESTABLISH QUORUM:

Upriver Elder:

Downriver Elder:

Commercial Fisher:

Lower River Subsistence:

Middle River Subsistence:

Upper River Subsistence:

Headwaters Subsistence:

QUORUM MET? Yes / No

Processor:

Member at Large:

Sport Fisher:

Western Interior RAC:

Y-K Delta RAC:

ADF&G:

INTRODUCTIONS:

INVOCATION:

APPROVAL OF AGENDA: *the agenda may be amended at this time.*

APPROVAL OF MINUTES: *Optional. ADF&G does not prepare official meeting minutes.*

ADF&G MANAGEMENT ACTIONS UNDER CONSIDERATION:

PEOPLE TO BE HEARD:

CONTINUING BUSINESS:

- Overview of Kuskokwim River salmon run assessment\ discussion of ADF&G considerations:
 - a. Test Fisheries (Bethel and Aniak):
 - b. Weirs/~~Mark Recapture/Aerial Surveys/Other:~~
- Subsistence Reports: Lowest river, ~~ONC Inseason Subsistence Report~~, Lower River, Middle River, Upper River, Headwaters.
 - USFWS Subsistence Report
- Commercial Catch Report:
- Processor Report:
- Sport Fish Report:
- Intercept Fishery Report: *optional*
- Weather Forecast:
- Discussion of ADF&G Management considerations and discussion of possible alternatives (recommendations from the Working Group):
- Motion for Discussion and Action:

OLD BUSINESS:

NEW BUSINESS:

- NOV. 4-5th Kuskokwim Chinook Salmon Management Capacity Building Workshop in Aniak- BSFA
- Special Action Request update- Lisa Feyereisen

COMMENTS FROM WORKING GROUP MEMBERS:

NEXT MEETING DATE: _____ **Time:** _____ **Place:** _____

Informational Packet

Information Packets *ARE*:

- **Intended to help inform Working Group discussions.**
- **To be viewed and used in context with Working Group meetings only.**

Packets *ARE NOT*:

- **To be viewed as standalone documents.**
- **A final say on fisheries management decisions.**

Please use this information responsibly:

Packet information is an incomplete snapshot of an ongoing discussion and changing conditions. Packet information should not be reproduced for any purpose other than to describe Working Group meeting discussions.

Misuse of Packet information can contribute to misunderstandings that can **cause harm to salmon users** and potentially **damage salmon resources**.

Ask Questions: ADF&G staff will be happy to answer biology and management questions. Please call **1-855-933-2433** to reach ADF&G Kuskokwim Area staff.

Attend Meetings: Each Working Group meeting is announced at least 48 hours prior to time and date of meeting. In addition, each meeting is recorded. Recordings can be found here:
http://www.adfg.alaska.gov/index.cfm?adfg=commercialbyarea_kuskokwim.kswg

Viewing the information packet while listening to meetings/recordings will provide a better understanding of the information presented in this packet.

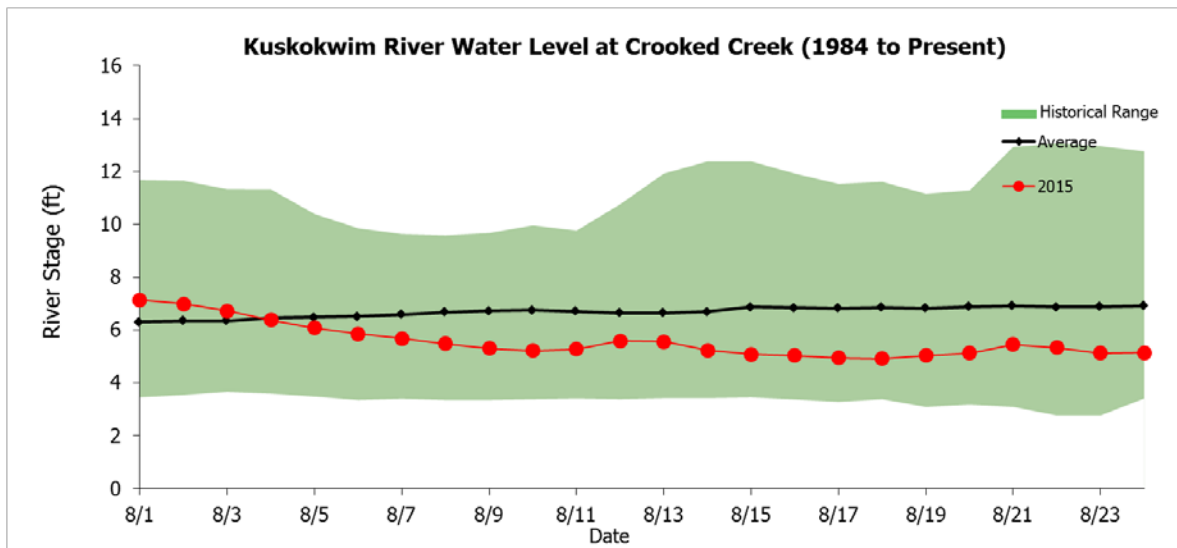
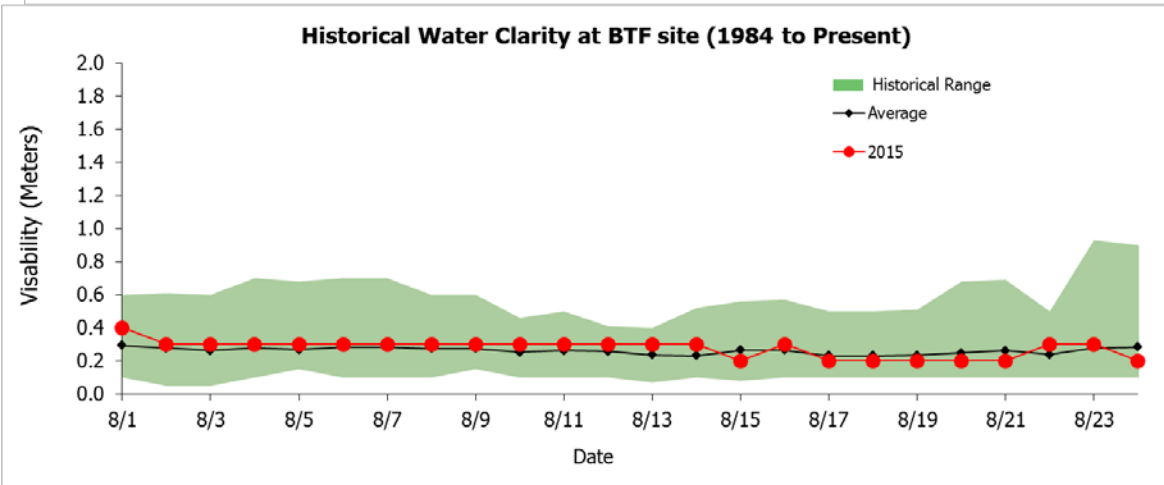
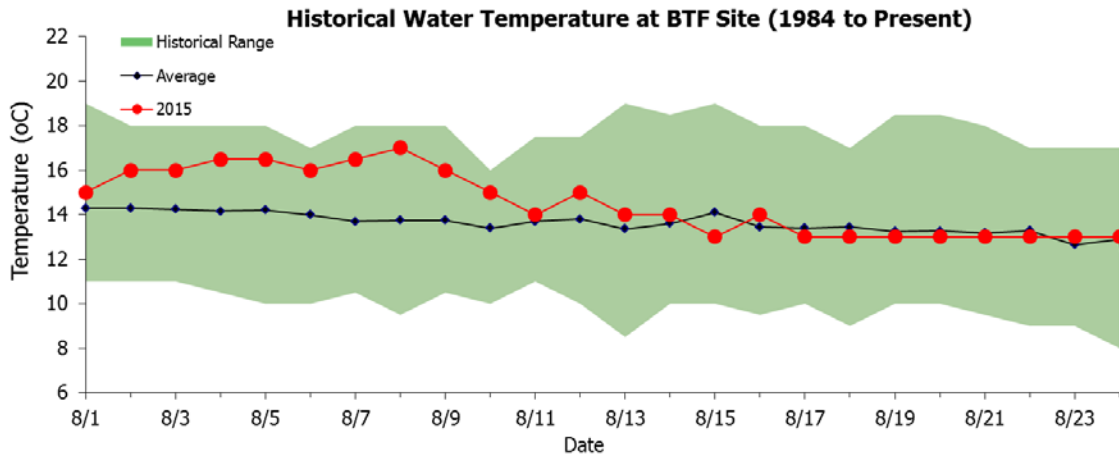
Thank you.

Jennifer Peeks

Chris Shelden

Working Group coordinators

Informational Packet



Informational Packet

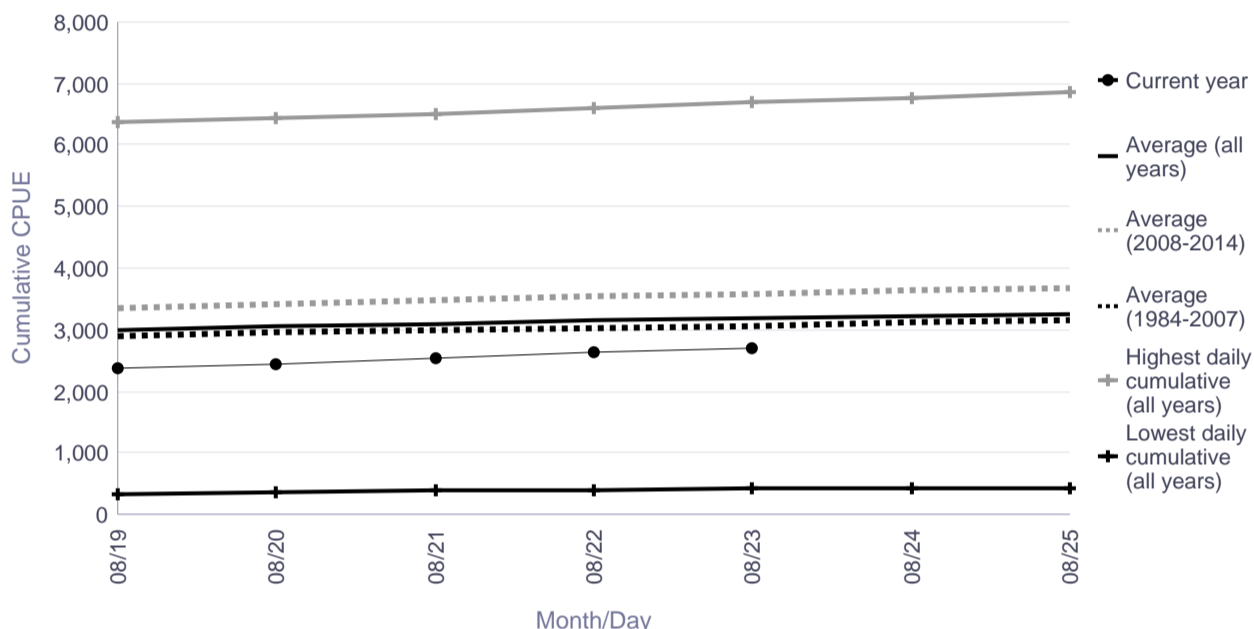
*To access BTF and weir data online, please visit: <http://www.adfg.alaska.gov/index.cfm?adfg=commercialbyareakuskokwim.salmon#fishcounts>

Bethel Test Fishery Coho Salmon Cumulative CPUE Index

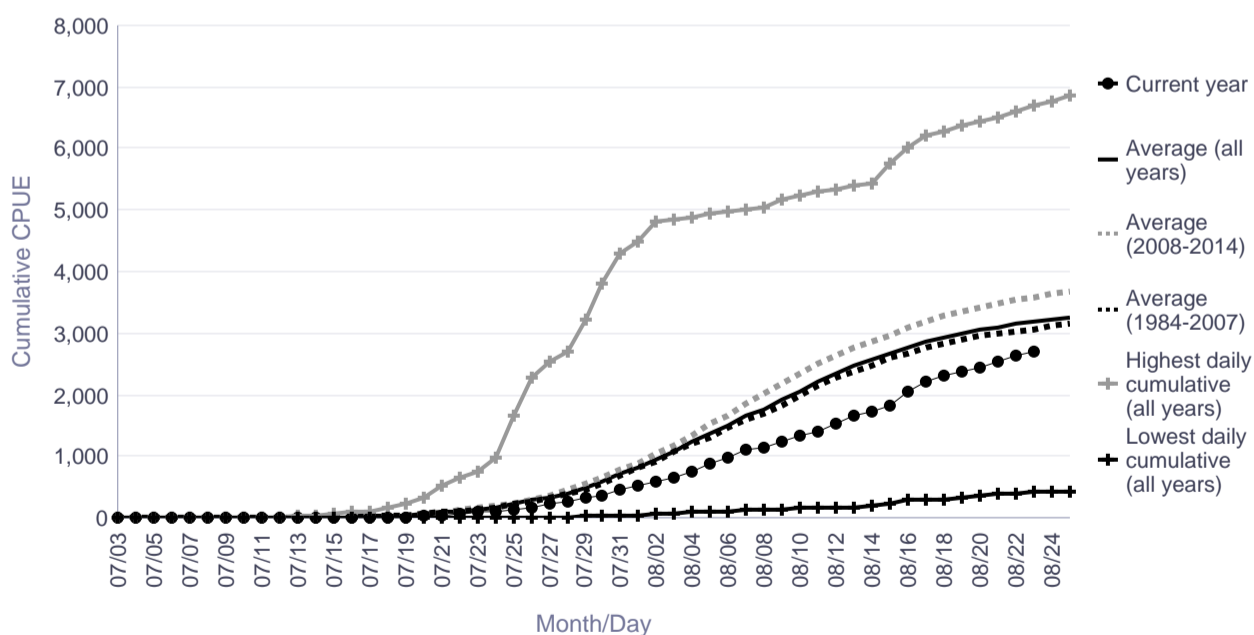
Date	Lowest daily cumulative (all years)	Average (all years)	Average (1984-2007)	Average (2008-2014)	Highest daily cumulative (all years)	Current year
08/19	326	3,007	2,906	3,353	6,388	2,375
08/20	362	3,060	2,956	3,415	6,436	2,453
08/21	381	3,105	2,998	3,478	6,500	2,528
08/22	410	3,149	3,038	3,533	6,605	2,629
08/23	413	3,185	3,072	3,579	6,693	2,688
08/24	417	3,225	3,109	3,628	6,774	2,736

	Lowest CPUE	Average CPUE (all years)	Average CPUE (1984-2007)	Average CPUE (2008-2014)	Highest CPUE
Season Total	423	3,235	3,128	3,602	6,849

Focused Two-Week Data View



Season Total Overview



Informational Packet

Coho Salmon Cumulative CPUE Index, Bethel Test Fishery

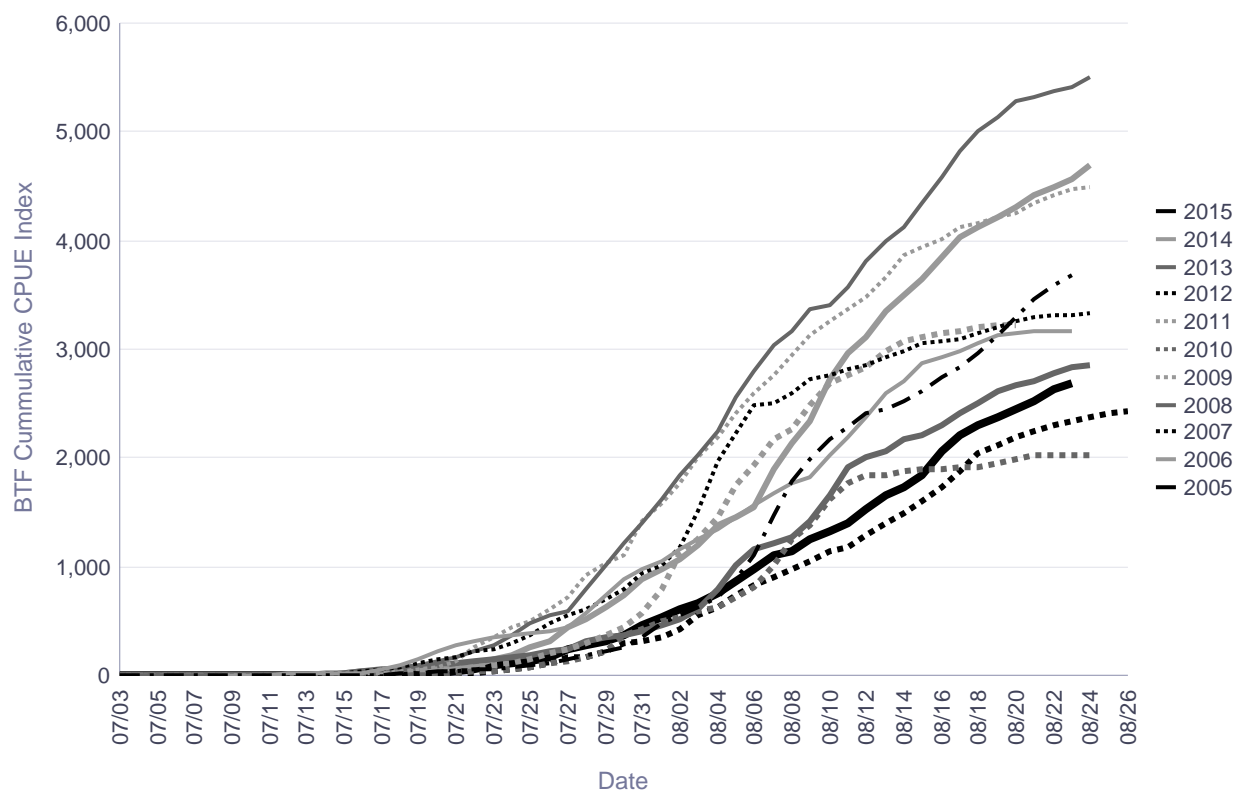
Bethel Test Fishery Coho Salmon Cumulative CPUE Index

****2015 data are PRELIMINARY and not comparable
to previous years due to subsistence fishing restrictions. ****

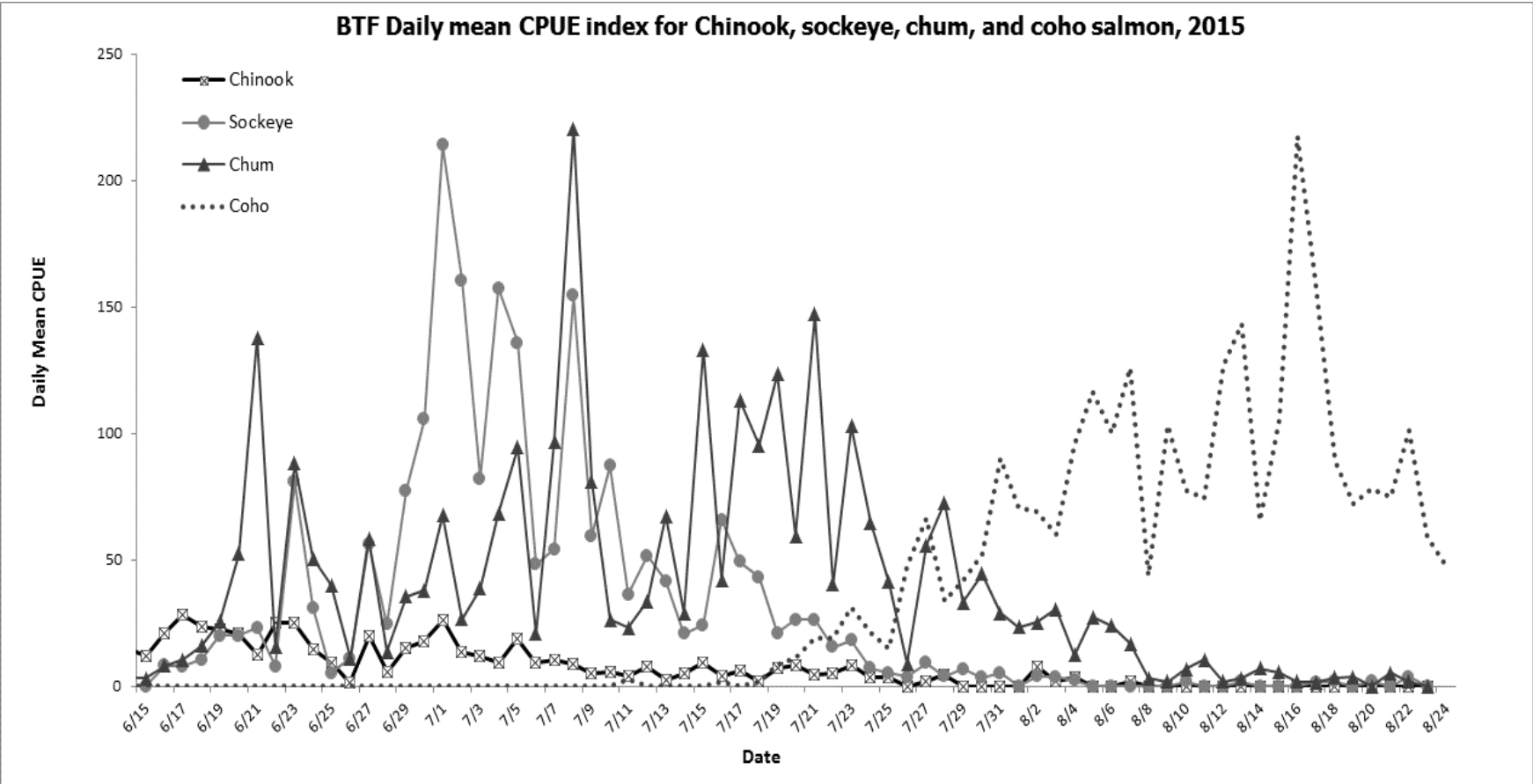
Date	CPUE										
	2005	2006	2007	2008	2009	2010	2011	2012	2013	2014	2015
08/17	2,839	2,982	3,097	4,818	4,116	1,918	3,166	1,888	2,411	4,026	2,214
08/18	2,965	3,064	3,142	4,999	4,157	1,918	3,209	2,037	2,504	4,121	2,303
08/19	3,125	3,122	3,199	5,136	4,212	1,956	3,220	2,120	2,616	4,208	2,375
08/20	3,295	3,141	3,254	5,275	4,257	1,991	3,231	2,186	2,661	4,304	2,453
08/21	3,466	3,159	3,293	5,324	4,337	2,021		2,245	2,710	4,414	2,528
08/22	3,581	3,163	3,309	5,379	4,411	2,023		2,296	2,777	4,495	2,629
08/23	3,680	3,163	3,316	5,416	4,472	2,027		2,346	2,827	4,569	2,688
08/24			3,329	5,497	4,495	2,029		2,375	2,857	4,697	2,736
08/25								2,411			
08/26								2,439			

	2005	2006	2007	2008	2009	2010	2011	2012	2013	2014	2015
Season Total	3,680	3,163	3,329	5,497	4,495	2,029	3,231	2,439	2,857	4,697	

Bethel Test Fishery, Coho Salmon Cumulative CPUE thru 8/26



Informational Packet



Informational Packet

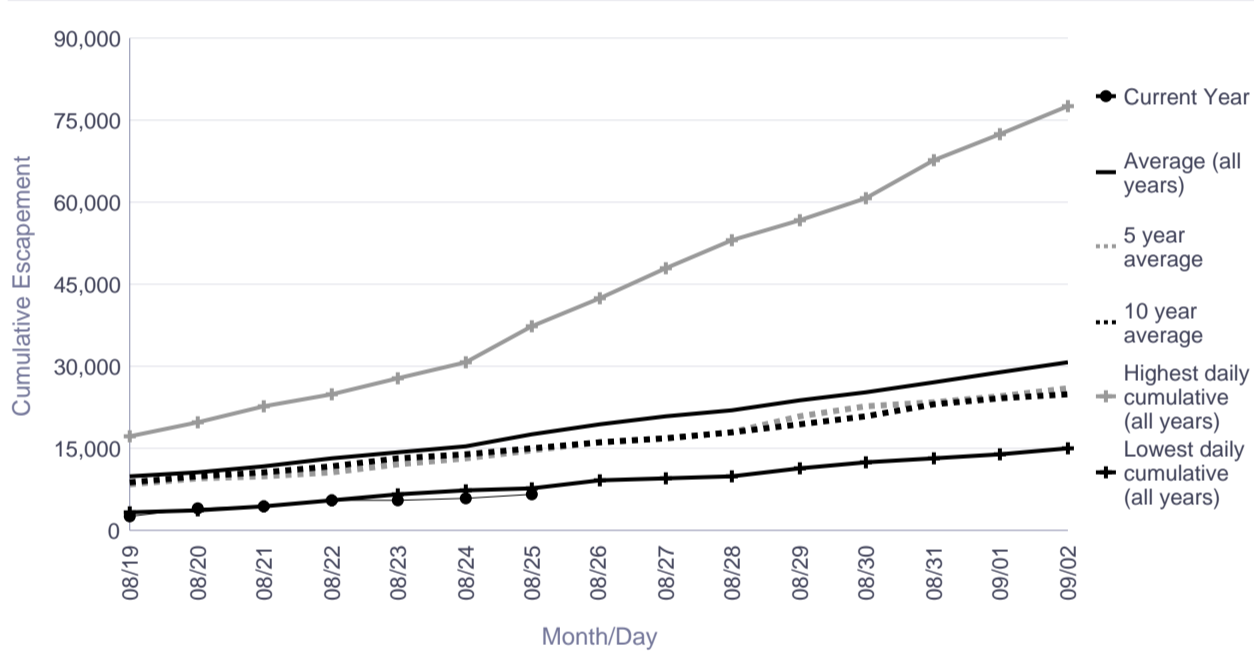
*To access BTF and weir data online, please visit: <http://www.adfg.alaska.gov/index.cfm?adfg=commercialbyareakuskokwim.salmon#fishcounts>

Kwethluk River Salmon Monitoring Project Cumulative Daily Passage of Coho Salmon Escapement Goal Range: >19,000

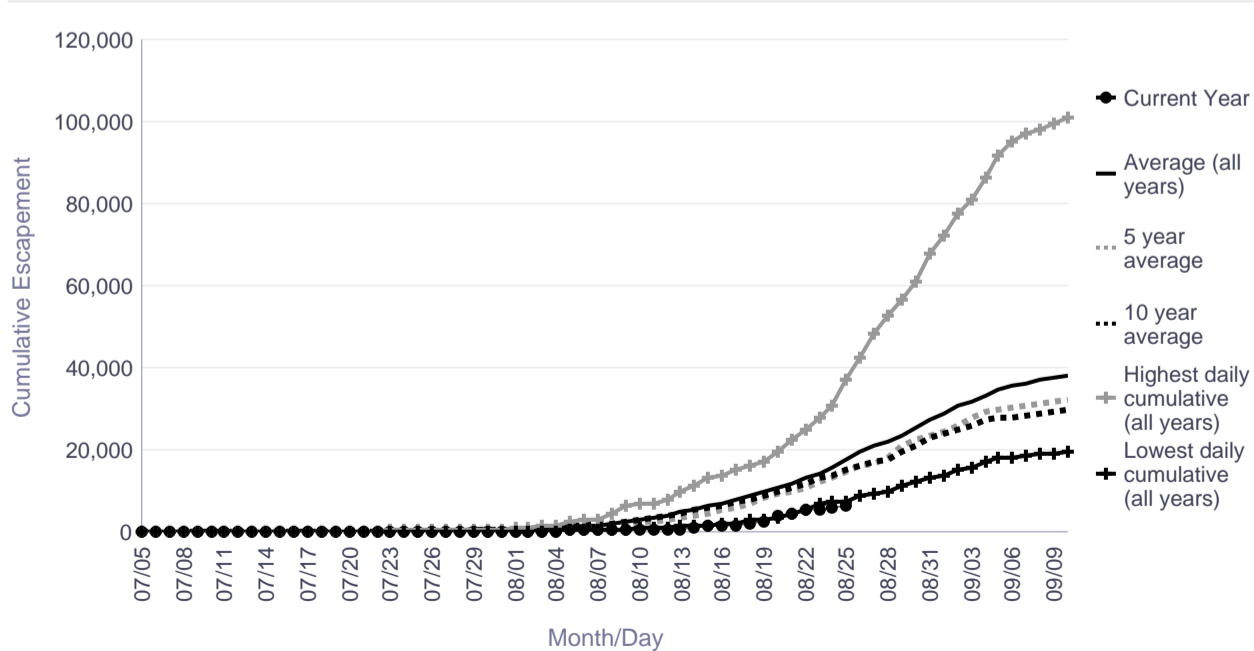
Date	Lowest daily cumulative (all years)	Average (all years)	5 year average	10 year average	Highest daily cumulative (all years)	Current Year
08/19	3,190	9,839	8,293	8,981	17,257	2,483
08/20	3,580	10,762	9,457	9,834	19,664	4,031
08/21	4,425	11,831	10,002	10,705	22,589	4,614
08/22	5,411	13,095	10,823	11,858	24,927	5,467
08/23	6,716	14,360	12,075	13,086	27,877	5,570
08/24	7,437	15,552	13,174	13,932	30,656	5,782
08/25	7,588	17,476	14,779	14,981	37,170	6,462
08/26	9,084	19,361	16,216	16,197	42,466	
08/27	9,562	20,961	16,872	17,006	48,099	
08/28	9,922	22,103	18,059	17,789	52,944	
08/29	11,461	23,647	21,026	19,363	56,627	
08/30	12,399	25,316	22,634	21,048	60,840	
08/31	13,091	27,242	23,543	22,904	67,808	
09/01	13,869	28,910	24,647	24,030	72,257	
09/02	15,124	30,629	26,083	24,942	77,411	

	Lowest Count	Average Count	5 Year Average	10 Year Average	Highest Count
Season Total	19,473	39,467	34,213	30,108	107,789

Focused Two-Week Data View



Season Total Overview



Informational Packet

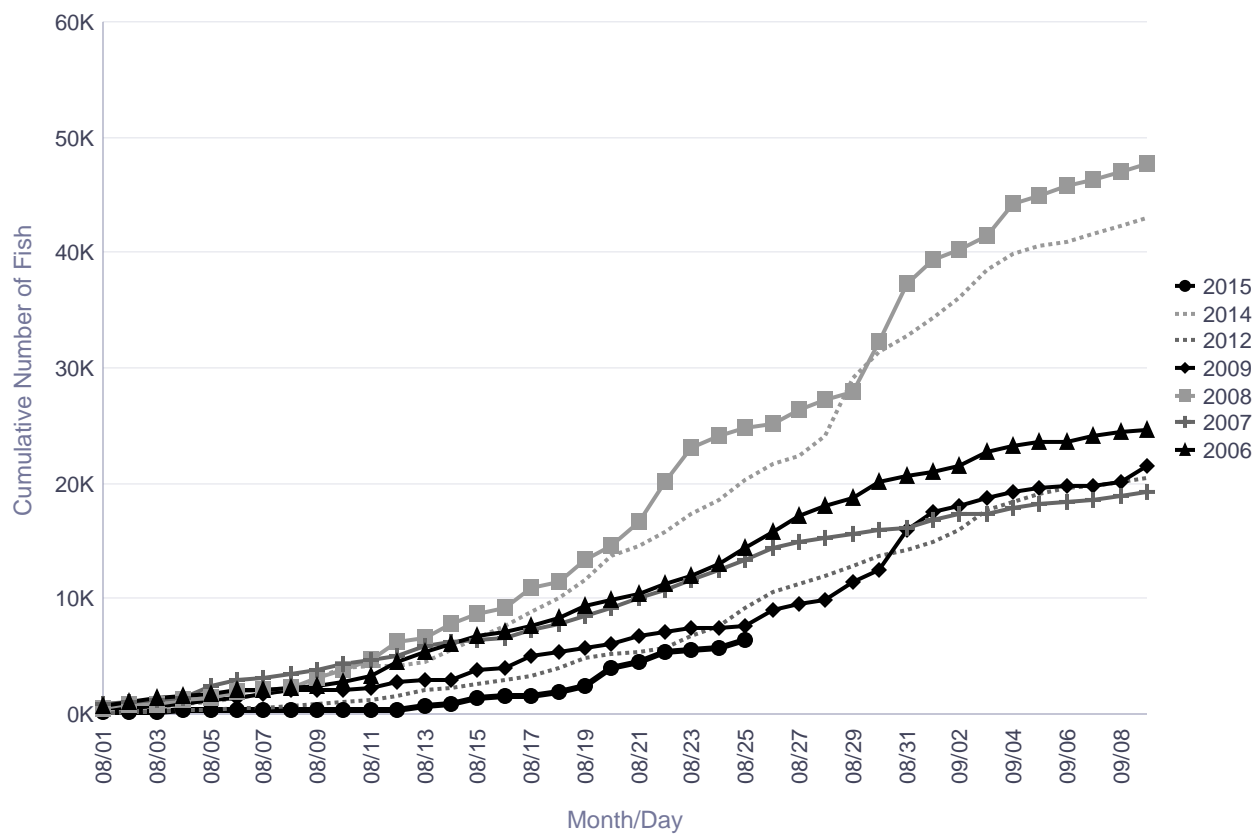
Kwethluk River Weir Historical Cumulative Daily Passage of Coho Salmon

	Cumulative Daily Passage									
Date	2006	2007	2008	2009	2010	2011	2012	2013	2014	2015
08/23	12,009	11,612	23,132	7,414			6,716		17,331	5,570
08/24	13,017	12,514	24,075	7,437			7,727		18,517	5,782
08/25	14,372	13,433	24,735	7,588			9,163		20,292	6,462
08/26	15,773	14,461	25,233	9,084			10,610		21,718	
08/27	17,209	14,909	26,408	9,562			11,343		22,298	
08/28	17,994	15,306	27,191	9,922			11,915		24,100	
08/29	18,829	15,672	27,960	11,461			12,847		29,102	
08/30	20,067	15,915	32,281	12,557			13,681		31,483	

Escapement Goal Range: > 19,000
 Highlighted years below are when escapement goal was achieved or exceeded.

	2006	2007	2008	2009	2010	2011	2012	2013	2014	2015
Season Total	25,667	19,473	48,049	21,911			20,895		43,945	

Kwethluk River Coho



There are no comments for the past three days.

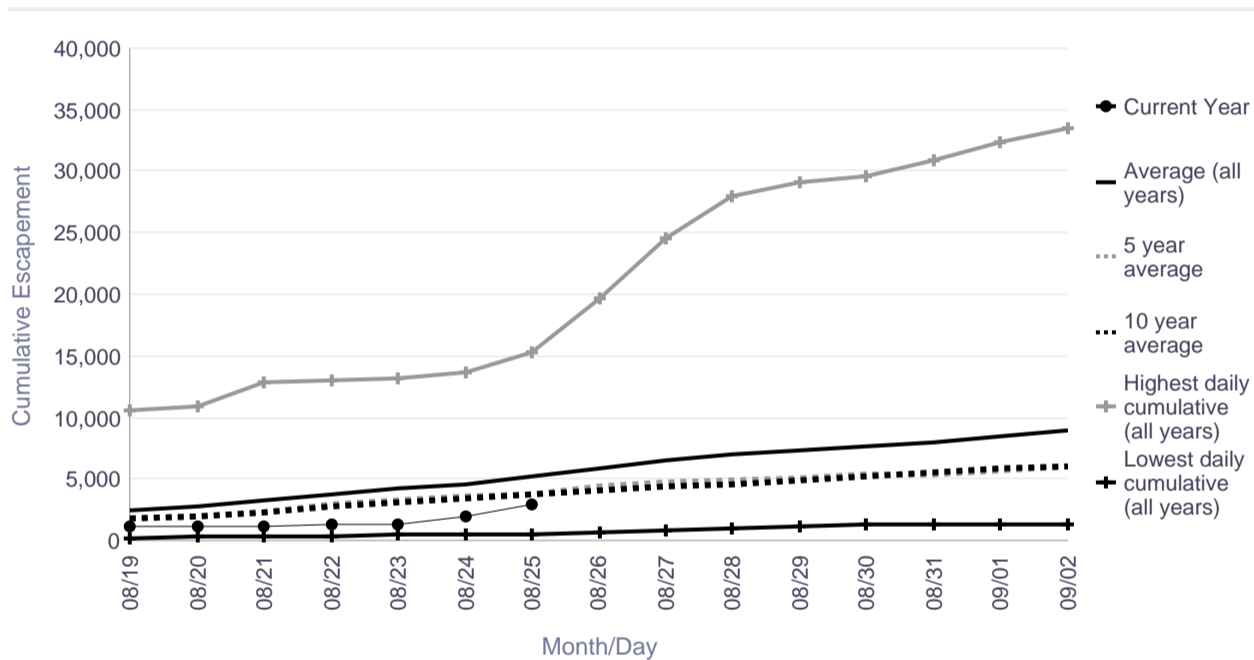
Informational Packet

Tuluksak River Salmon Monitoring Project Cumulative Daily Passage of Coho Salmon

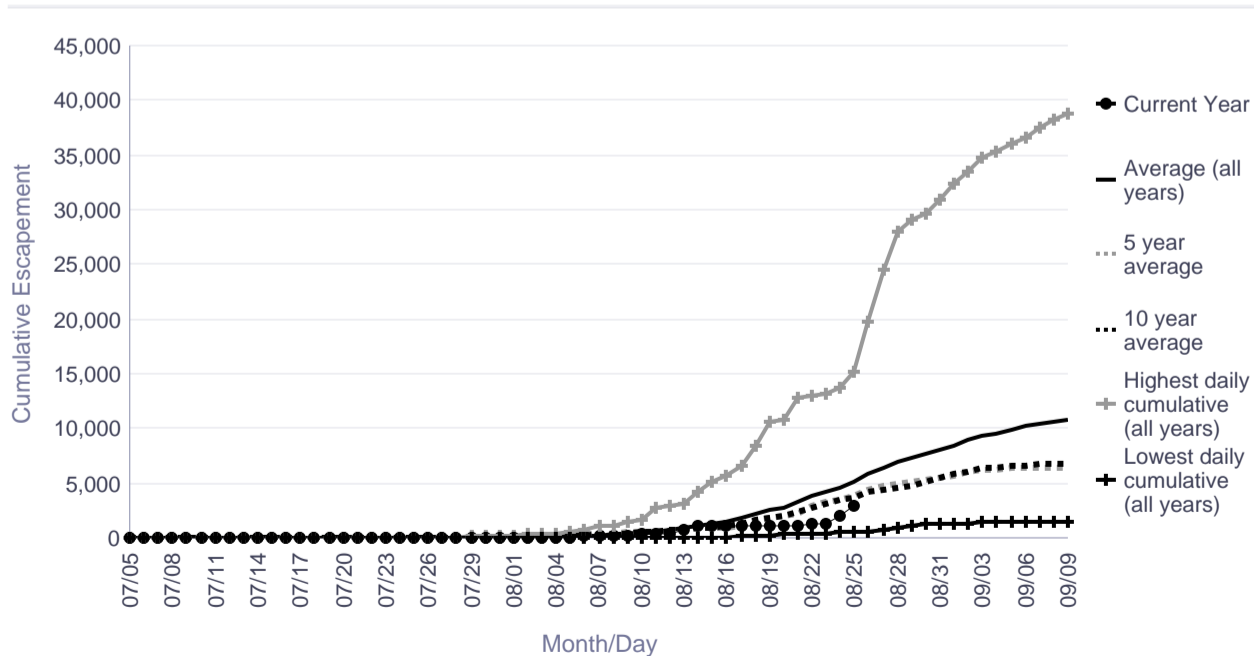
Date	Lowest daily cumulative (all years)	Average (all years)	5 year average	10 year average	Highest daily cumulative (all years)	Current Year
08/19	247	2,533	1,863	1,809	10,589	1,168
08/20	317	2,766	1,991	2,017	10,855	1,172
08/21	385	3,275	2,309	2,343	12,813	1,200
08/22	426	3,828	2,907	2,752	13,040	1,295
08/23	472	4,270	3,294	3,176	13,114	1,394
08/24	491	4,556	3,541	3,416	13,707	1,991
08/25	558	5,189	3,819	3,748	15,254	2,980
08/26	657	5,890	4,409	4,169	19,752	
08/27	838	6,475	4,699	4,387	24,560	
08/28	954	6,966	4,905	4,615	27,976	
08/29	1,147	7,309	5,106	4,858	29,143	
08/30	1,256	7,667	5,325	5,221	29,544	
08/31	1,314	8,023	5,457	5,513	30,823	
09/01	1,378	8,458	5,682	5,800	32,425	
09/02	1,399	8,946	5,975	6,076	33,482	

	Lowest Count	Average Count	5 Year Average	10 Year Average	Highest Count
Season Total	1,525	11,144	6,810	6,980	41,071

Focused Two-Week Data View



Season Total Overview



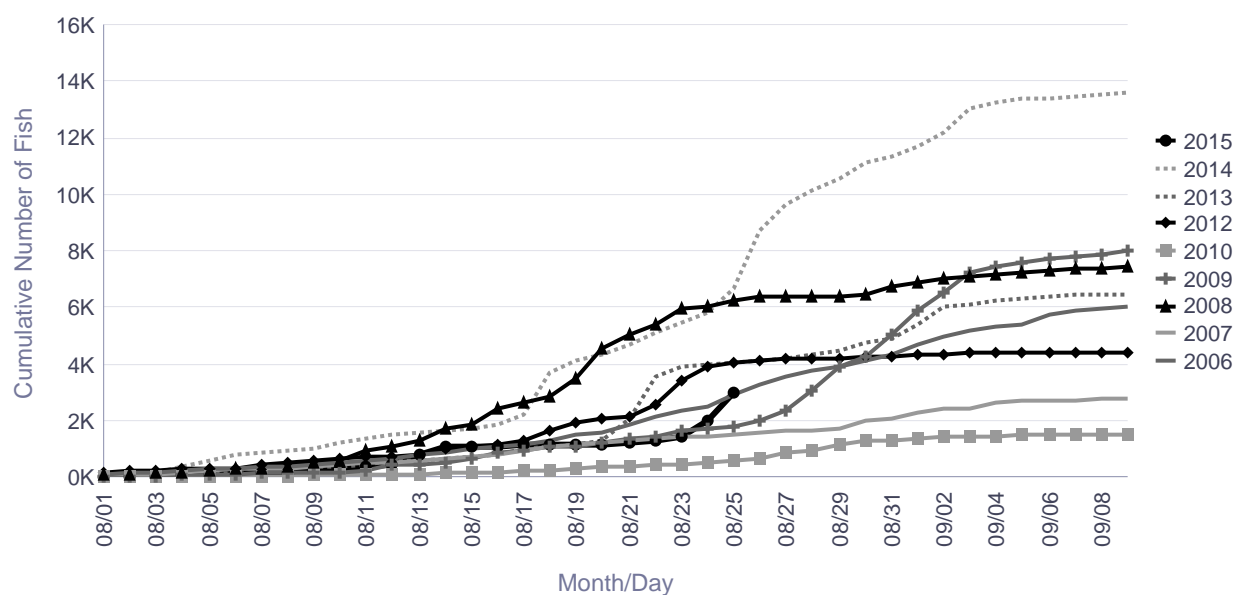
Informational Packet

Tuluksak River Salmon Monitoring Project Cumulative Daily Passage of Coho Salmon

Cumulative Daily Passage										
Date	2006	2007	2008	2009	2010	2011	2012	2013	2014	2015
08/23	2,349	1,415	5,921	1,647	472		3,381	3,871	5,451	1,394
08/24	2,510	1,437	6,021	1,695	491		3,919	3,962	5,791	1,991
08/25	2,908	1,496	6,205	1,767	558		4,056	4,026	6,637	2,980
08/26	<u>3,258</u>	<u>1,550</u>	<u>6,345</u>	<u>1,977</u>	<u>657</u>		<u>4,140</u>	<u>4,096</u>	<u>8,742</u>	
08/27	3,548	1,621	6,362	2,342	838		4,171	4,159	9,628	
08/28	3,796	1,669	6,385	3,076	954		4,192	4,331	10,144	
08/29	3,883	1,719	6,404	3,894	1,147		4,206	4,488	10,583	
08/30	4,085	2,011	6,463	4,284	1,256		4,229	4,722	11,091	

	2006	2007	2008	2009	2010	2011	2012	2013	2014	2015
Season Total	6,111	2,807	7,457	8,137	1,525		4,407	6,490	13,797	

Tuluksak River Coho



There are no comments for the past three days.

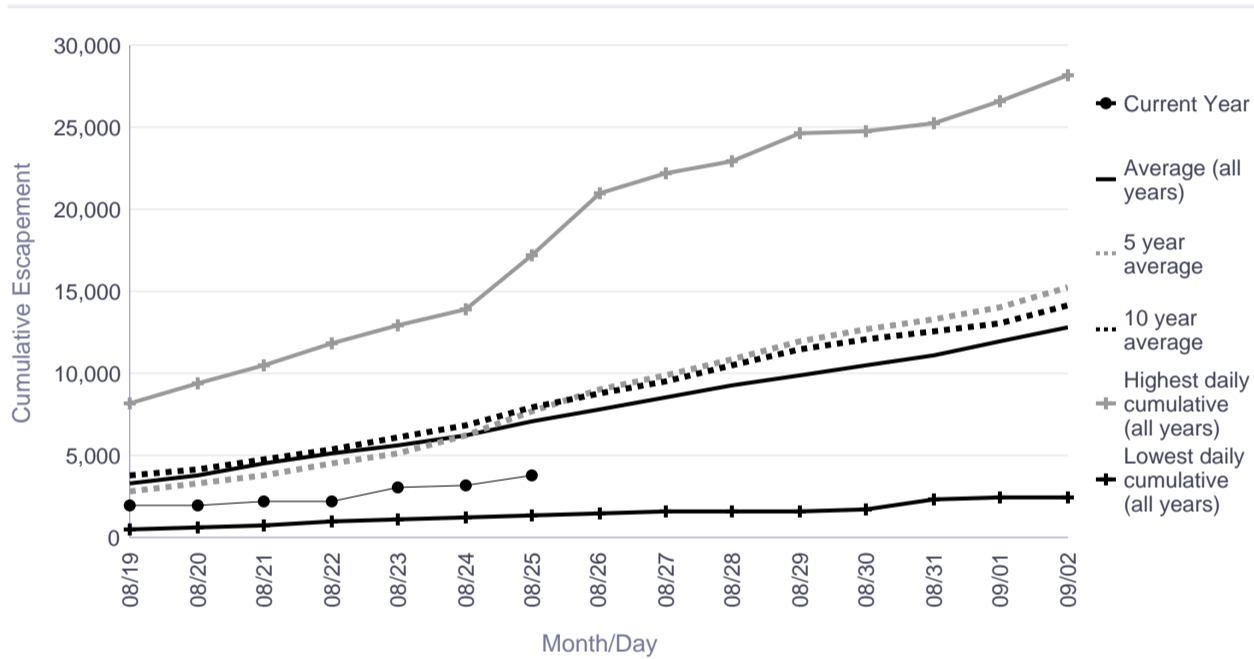
Informational Packet

George River Salmon Monitoring Project Cumulative Daily Passage of Coho Salmon

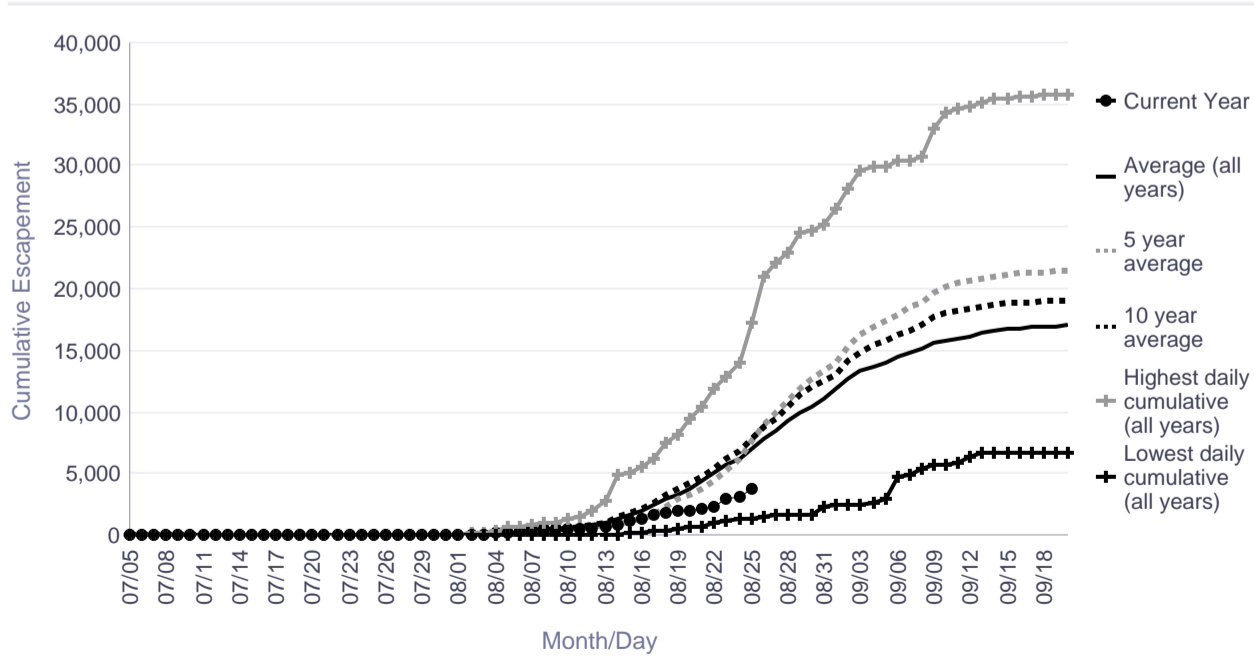
Date	Lowest daily cumulative (all years)	Average (all years)	5 year average	10 year average	Highest daily cumulative (all years)	Current Year
08/19	489	3,334	2,871	3,745	8,215	2,008
08/20	675	3,800	3,258	4,189	9,456	2,024
08/21	698	4,480	3,817	4,778	10,491	2,188
08/22	953	5,113	4,482	5,423	11,822	2,255
08/23	1,139	5,681	5,196	6,148	12,940	3,030
08/24	1,278	6,238	6,225	6,881	13,930	3,135
08/25	1,374	7,075	7,643	7,889	17,168	3,812
08/26	1,467	7,793	8,978	8,731	20,938	
08/27	1,600	8,510	9,863	9,526	22,136	
08/28	1,623	9,233	10,829	10,470	22,960	
08/29	1,625	9,940	11,942	11,452	24,603	
08/30	1,678	10,491	12,743	12,067	24,767	
08/31	2,319	11,082	13,355	12,550	25,211	
09/01	2,425	11,944	13,979	13,062	26,576	
09/02	2,473	12,773	15,308	14,144	28,149	

	Lowest Count	Average Count	5 Year Average	10 Year Average	Highest Count
Season Total	6,759	17,033	21,463	19,113	35,771

Focused Two-Week Data View



Season Total Overview



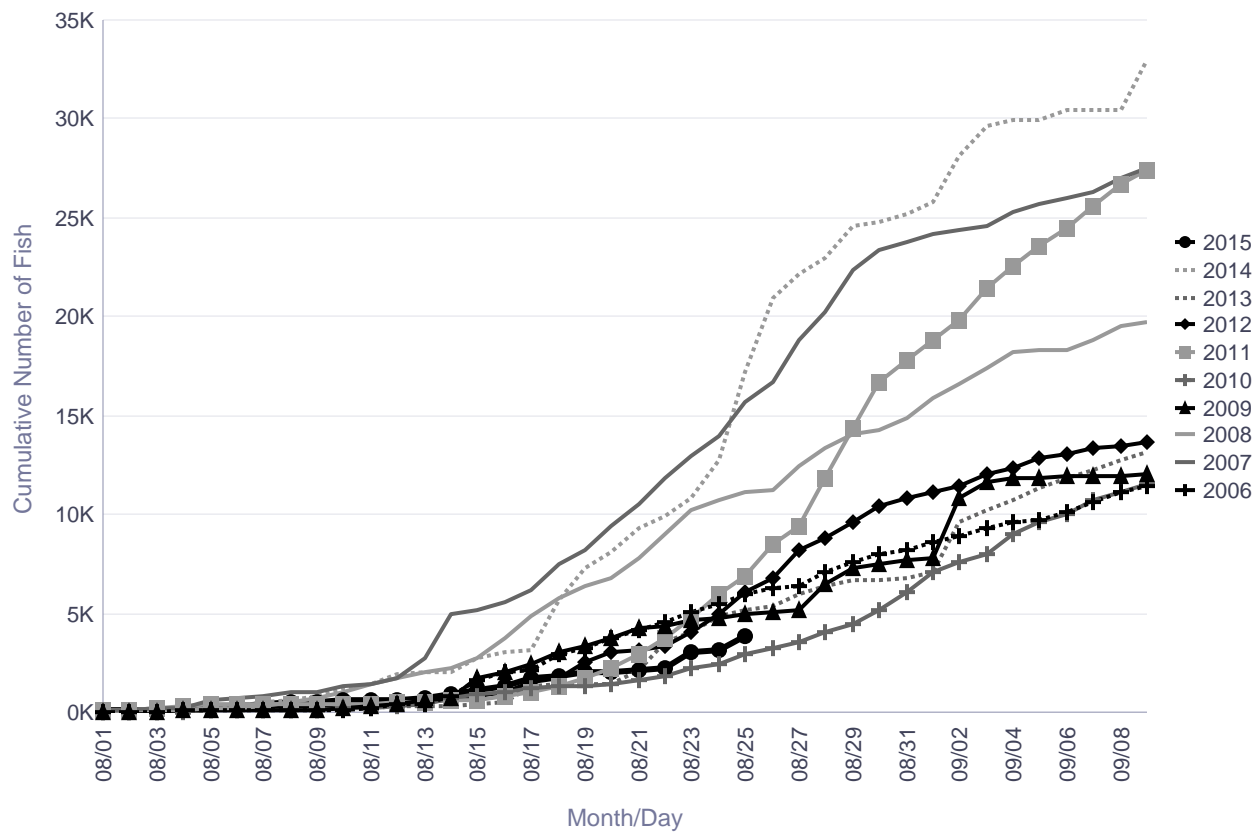
Informational Packet

George River Weir Historical Cumulative Daily Passage of Coho Salmon

	Cumulative Daily Passage									
Date	2006	2007	2008	2009	2010	2011	2012	2013	2014	2015
08/23	5,053	12,940	10,194	4,626	2,243	4,775	4,031	4,106	10,824	3,030
08/24	5,518	13,930	10,724	4,775	2,480	5,960	5,018	4,877	12,791	3,135
08/25	5,985	15,732	11,107	4,959	2,935	6,892	6,089	5,130	17,168	3,812
08/26	<u>6,322</u>	<u>16,656</u>	<u>11,256</u>	<u>5,119</u>	<u>3,212</u>	<u>8,510</u>	<u>6,825</u>	<u>5,404</u>	<u>20,938</u>	
08/27	6,423	18,784	12,423	5,203	3,561	9,465	8,161	5,992	22,136	
08/28	7,099	20,273	13,377	6,510	4,050	11,886	8,852	6,395	22,960	
08/29	7,622	22,372	14,039	7,327	4,511	14,349	9,582	6,667	24,603	
08/30	7,990	23,395	14,246	7,482	5,140	16,663	10,412	6,733	24,767	

	2006	2007	2008	2009	2010	2011	2012	2013	2014	2015
Season Total	12,705	28,398	21,931	12,490	12,639	29,120	14,478	15,308	35,771	

George River Coho



There are no comments for the past three days.

Informational Packet

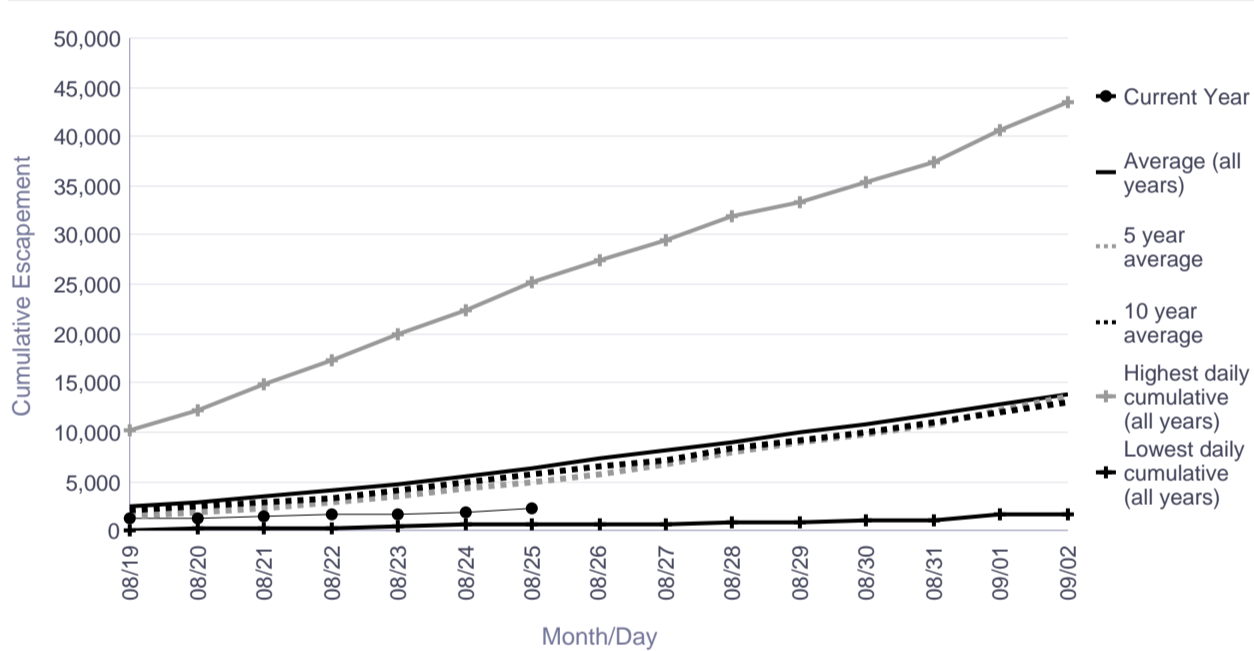
Kogrukluk River Salmon Monitoring Project Cumulative Daily Passage of Coho Salmon

Escapement Goal Range: 13,000-28,000

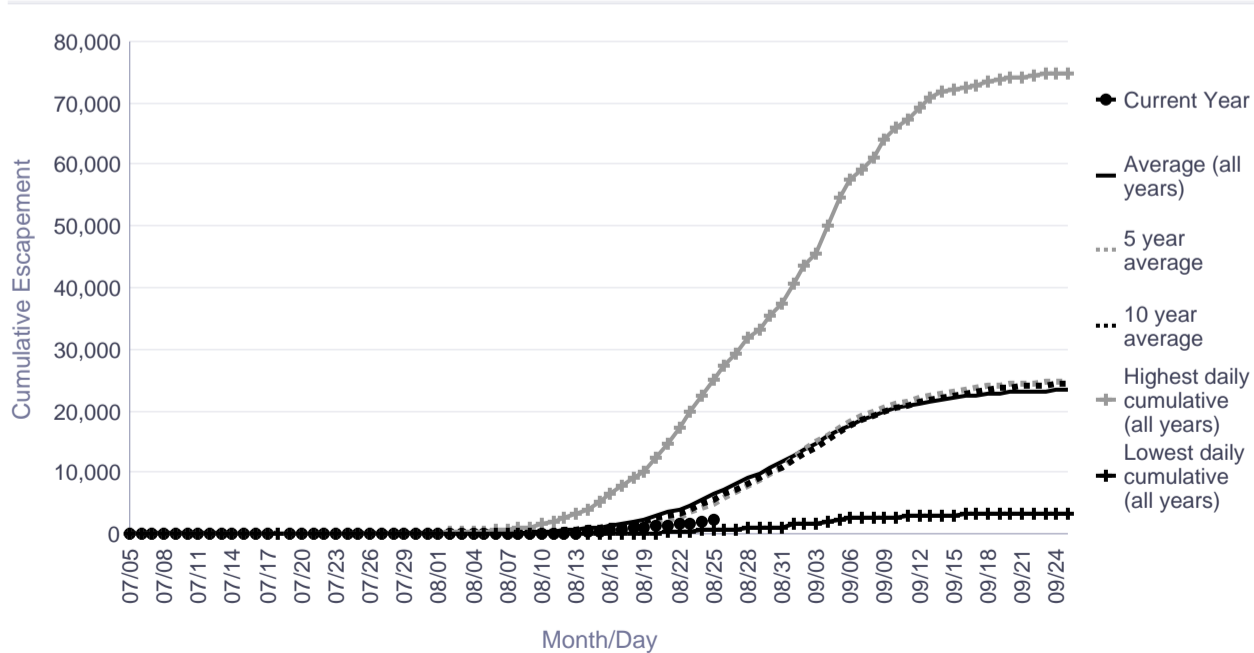
Date	Lowest daily cumulative (all years)	Average (all years)	5 year average	10 year average	Highest daily cumulative (all years)	Current Year
08/19	125	2,462	1,511	2,139	10,140	1,169
08/20	206	2,909	1,859	2,509	12,282	1,302
08/21	238	3,473	2,293	2,945	14,792	1,384
08/22	305	4,043	2,804	3,381	17,339	1,646
08/23	457	4,734	3,466	4,096	20,004	1,738
08/24	557	5,522	4,215	4,914	22,422	1,875
08/25	592	6,397	4,950	5,740	25,149	2,301
08/26	598	7,281	5,760	6,458	27,495	
08/27	625	8,121	6,765	7,239	29,448	
08/28	895	9,058	7,860	8,260	31,878	
08/29	944	9,946	8,906	9,252	33,253	
08/30	972	10,857	9,679	10,053	35,309	
08/31	1,133	11,814	10,796	10,919	37,407	
09/01	1,693	12,871	12,274	12,071	40,665	
09/02	1,740	13,840	13,572	13,039	43,455	

	Lowest Count	Average Count	5 Year Average	10 Year Average	Highest Count
Season Total	3,446	23,350	24,818	24,372	74,915

Focused Two-Week Data View



Season Total Overview



Informational Packet

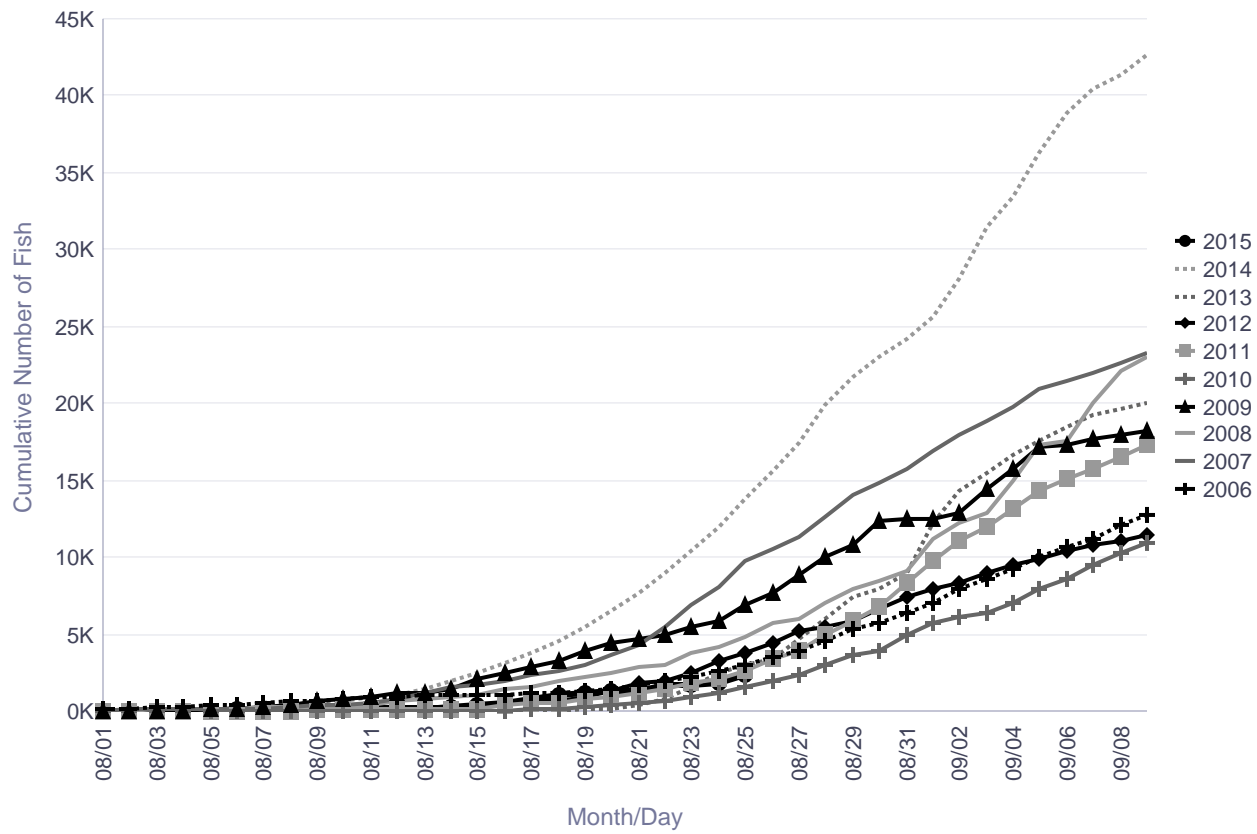
Kogrukluk River Weir Historical Cumulative Daily Passage of Coho Salmon

	Cumulative Daily Passage									
Date	2006	2007	2008	2009	2010	2011	2012	2013	2014	2015
08/23	2,222	6,882	3,731	5,472	951	1,843	2,472	1,628	10,437	1,738
08/24	2,571	8,019	4,167	5,914	1,238	2,119	3,209	2,472	12,035	1,875
08/25	2,979	9,717	4,782	6,939	1,579	2,604	3,786	3,026	13,754	2,301
08/26	<u>3,527</u>	<u>10,516</u>	<u>5,699</u>	<u>7,719</u>	<u>1,975</u>	<u>3,408</u>	<u>4,406</u>	<u>3,431</u>	<u>15,579</u>	
08/27	3,977	11,327	6,026	8,896	2,389	3,953	5,233	4,757	17,494	
08/28	4,577	12,620	7,007	10,091	3,020	5,004	5,468	5,943	19,866	
08/29	5,329	14,110	7,888	10,869	3,615	5,887	5,867	7,488	21,672	
08/30	5,756	14,882	8,478	12,346	3,984	6,763	6,667	7,890	23,093	

Escapement Goal Range: 13,000 to 28,000
Highlighted years below are when escapement goal was achieved or exceeded.

	2006	2007	2008	2009	2010	2011	2012	2013	2014	2015
Season Total	<u>16,268</u>	<u>26,423</u>	<u>29,237</u>	<u>22,289</u>	<u>14,689</u>	<u>21,800</u>	<u>13,421</u>	<u>21,207</u>	<u>52,975</u>	

Kogrukluk River Coho



There are no comments for the past three days.

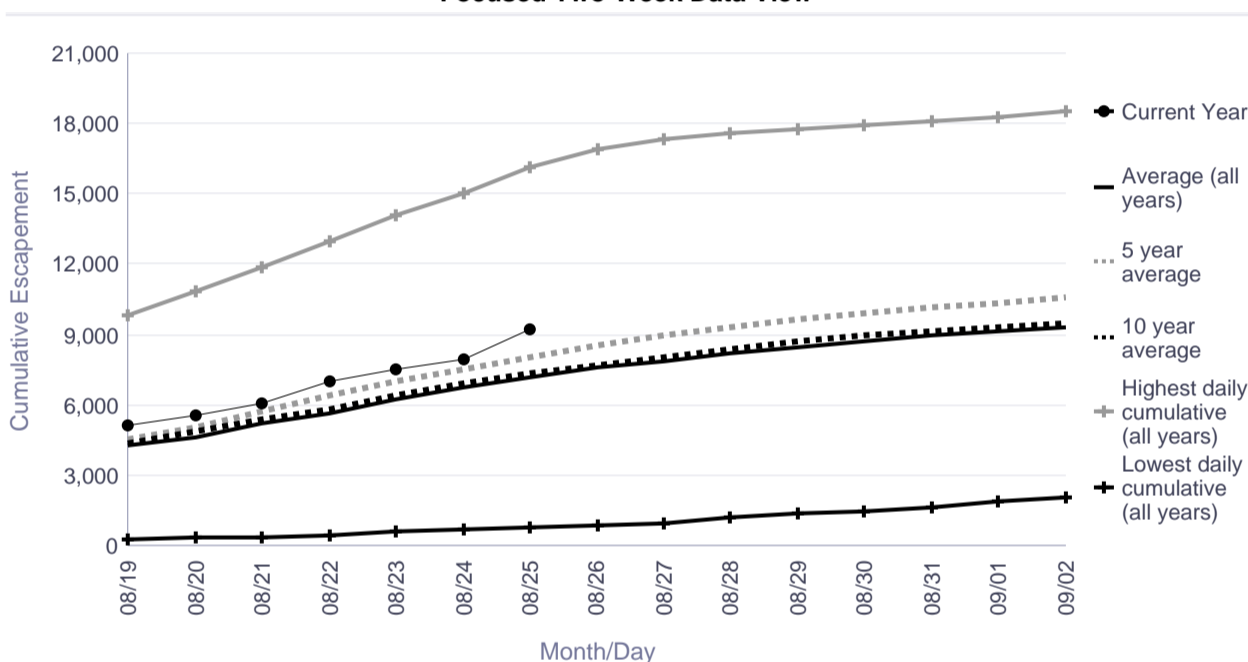
Informational Packet

Tatlawiksuk River Salmon Monitoring Project Cumulative Daily Passage of Coho Salmon

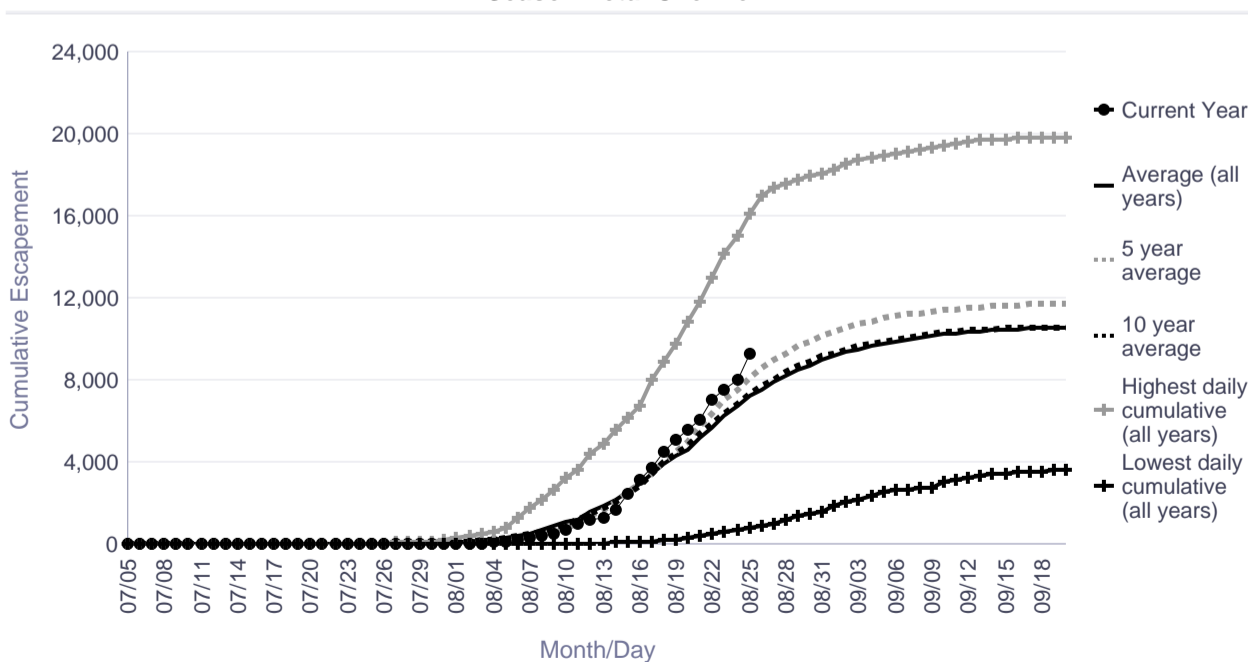
Date	Lowest daily cumulative (all years)	Average (all years)	5 year average	10 year average	Highest daily cumulative (all years)	Current Year
08/19	249	4,279	4,495	4,405	9,787	5,108
08/20	313	4,642	5,004	4,834	10,875	5,522
08/21	388	5,220	5,752	5,384	11,828	6,098
08/22	475	5,682	6,393	5,853	12,965	7,045
08/23	574	6,252	6,989	6,377	14,126	7,555
08/24	677	6,767	7,505	6,886	15,028	7,977
08/25	765	7,208	8,069	7,333	16,125	9,249
08/26	896	7,569	8,578	7,686	16,931	
08/27	993	7,886	8,968	8,025	17,335	
08/28	1,174	8,196	9,288	8,351	17,603	
08/29	1,345	8,479	9,620	8,670	17,737	
08/30	1,438	8,704	9,878	8,927	17,908	
08/31	1,622	8,944	10,129	9,155	18,053	
09/01	1,861	9,160	10,341	9,314	18,227	
09/02	2,031	9,349	10,568	9,494	18,493	

	Lowest Count	Average Count	5 Year Average	10 Year Average	Highest Count
Season Total	3,621	10,543	11,710	10,588	19,814

Focused Two-Week Data View



Season Total Overview



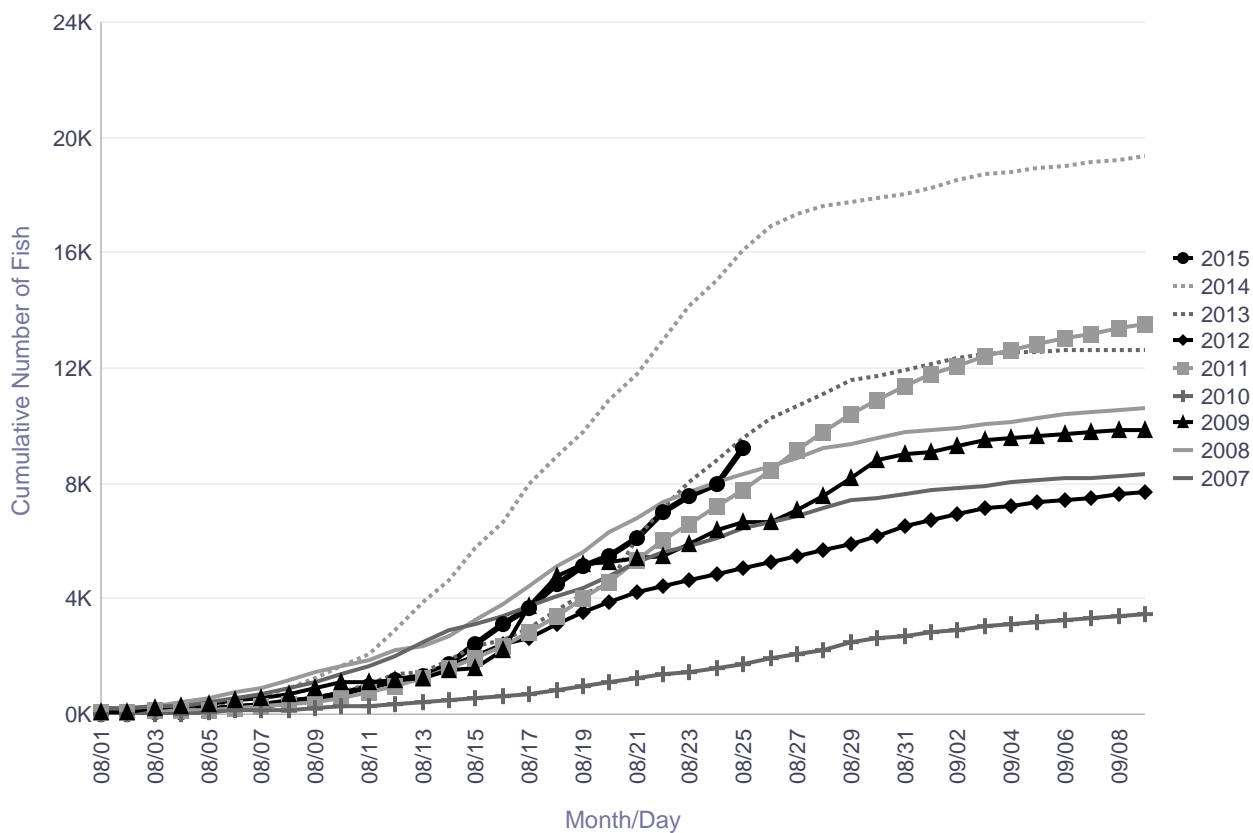
Informational Packet

Tatlawiksuk River Weir Historical Cumulative Daily Passage of Coho Salmon

	Cumulative Daily Passage									
Date	2006	2007	2008	2009	2010	2011	2012	2013	2014	2015
08/23		5,838	7,684	5,911	1,493	6,613	4,683	8,032	14,126	7,555
08/24		6,096	8,037	6,421	1,593	7,222	4,842	8,840	15,028	7,977
08/25		6,473	8,340	6,665	1,767	7,791	5,082	9,582	16,125	9,249
08/26		<u>6,649</u>	<u>8,580</u>	<u>6,683</u>	<u>1,938</u>	<u>8,487</u>	<u>5,293</u>	<u>10,242</u>	<u>16,931</u>	
08/27		6,864	8,903	7,054	2,122	9,154	5,505	10,722	17,335	
08/28		7,183	9,202	7,591	2,263	9,779	5,672	11,124	17,603	
08/29		7,412	9,346	8,210	2,473	10,384	5,897	11,607	17,737	
08/30		7,496	9,550	8,786	2,620	10,907	6,208	11,745	17,908	

	2006	2007	2008	2009	2010	2011	2012	2013	2014	2015
Season Total		8,500	11,022	10,148	3,773	14,184	8,015	12,764	19,814	

Tatlawiksuk River Coho



There are no comments for the past three days.

Information Packet

Coho salmon commercial harvest by day, 2004–2015

	2004	2005	2006	2007	2008	2009	2010	2011	2012	2013	2014	2015	5-yr Average	10-yr Average
22-Jul					94			1,525					1,525	810
23-Jul										2,960			2,960	2,960
24-Jul									1,562				1,562	1,562
25-Jul					90									90
26-Jul							3,603			5,785			4,694	4,694
27-Jul								5,688	2,912				4,300	4,300
28-Jul						14,516								14,516
29-Jul														
30-Jul	9,462				119		6,049			8,968			7,509	5,045
31-Jul									3,485				3,485	3,485
1-Aug			10,309	19,133		16,846								15,429
2-Aug		8,666			150									4,408
3-Aug	23,957							12,563	6,958				9,761	9,761
4-Aug			10,650			19,337								14,994
5-Aug		21,463												21,463
6-Aug	28,638			15,926	12,013	380	17,246			23,461			20,354	13,805
7-Aug									5,148				5,148	5,148
8-Aug			14,162		13,552	16,224								14,646
9-Aug		20,026												20,026
10-Aug	20,022			13,059				8,660	5,209	30,972		23,335	14,947	14,475
11-Aug			23,209			15,569					23,999		23,999	20,926
12-Aug							7,274						7,274	7,274
13-Aug	20,353				19,667	3,709				8,077			8,077	10,484
14-Aug				15,411							32,570		32,570	23,991
15-Aug		7,768	18,253		20,140									15,387
16-Aug									7,996				7,996	7,996
17-Aug	8,491			6,231				4,557		12,778		27,535	8,668	7,855
18-Aug			7,833			10,189					26,395		26,395	14,806
19-Aug														
20-Aug	9,287				7,017					11,630			11,630	9,324
21-Aug									2,838		18,809	14,124	10,824	10,824
22-Aug			6,004	3,993	6,280	6,419								5,674
23-Aug	19,068									5,447			5,447	5,447
24-Aug	18,642			3,085										3,085
25-Aug		6,549	5,427		5,242									5,739
26-Aug											10,400		10,400	10,400
27-Aug	13,535													
28-Aug			2,593											2,593
29-Aug														
30-Aug	11,563		1,334											1,334
31-Aug														
Total	183,018	64,472	99,774	76,838	84,364	103,189	34,172	32,993	36,108	110,078	112,173	64,994	65,105	75,416
22-Jul to 1-Aug	9,462	0	10,309	19,133	303	31,362	9,652	7,213	7,959	17,713	0	0	8,507	10,364
2-Aug to 8-Aug	52,595	30,129	24,812	15,926	25,715	35,941	17,246	12,563	12,106	23,461	0	0	13,075	19,790
9-Aug to 14-Aug	40,375	20,026	23,209	28,470	19,667	19,278	7,274	8,660	5,209	39,049	56,569	23,335	23,352	22,741
15-Aug to 31-Aug	80,586	14,317	41,444	13,309	38,679	16,608	0	4,557	10,834	29,855	55,604	41,659	20,170	22,521

Informational Packet

2015 Inseason Salmon Assessment Update for the Kuskokwim Area #12

The Alaska Department of Fish and Game (ADF&G) works cooperatively with U.S. Fish and Wildlife Service (USFWS), National Park Service, and various Tribal or community groups to monitor the health of Kuskokwim Area salmon stocks and provide data for inseason management.

ADF&G ensures that all assessment data are publicly available inseason. Detailed project summaries are prepared each week and presented to the Kuskokwim River Salmon Management Working Group. Management meetings are held each Wednesday at the ADF&G office in Bethel. Working Group meetings are open to the public, in person or via teleconference. Project summaries and associated meeting materials are available online by 5:00 PM Tuesday during the salmon season. In addition, select data are available daily by 10:00 AM.

Working Group Information

Packets: <http://www.adfg.alaska.gov/index.cfm?adfg=commercialbyareakuskokwim.kswg>

Inseason Bethel Test Fish and Escapement Monitoring Data:

<http://www.adfg.alaska.gov/index.cfm?adfg=commercialbyareakuskokwim.salmon#fishcounts>

Assessment Overview

This assessment overview focuses primarily on coho salmon. For additional context regarding Chinook salmon, chum salmon, or sockeye salmon, please see prior assessment updates.

Coho salmon runs were managed conservatively throughout the Kuskokwim Management Area. A conservative approach was warranted due to inseason assessment information that indicated late run timing, below average run strength, and uncertainty in achieving tributary escapement goals. Commercial harvest within the Kuskokwim River was delayed and the number of openers was reduced compared to prior years in order to provide additional opportunity for subsistence harvest of coho salmon.

Active management of the Kuskokwim River coho salmon runs has ended. There are no additional commercial harvest opportunities planned for the Kuskokwim Management Area. The Bethel Test Fishery ended operations on August 24. Throughout the season, the Bethel Test Fishery indicated that the coho salmon run size would be adequate to meet escapement goals, allow for an increased subsistence harvest, and modest commercial harvest.

Coho salmon escapement monitoring will continue throughout the month of September at five Kuskokwim River locations and the Goodnews River in Kuskokwim Bay. Currently, escapement of coho salmon is below average at all locations, except Tatlawiksuk River where escapement is above average. Inseason projections of end of season escapement based on late run timing indicate that the escapement goal will likely be achieved at the Kogrukluk River and may not be achieved at the Kwethluk River.

Bethel Test Fishery

Bethel Test Fishery (BTF) is the primary inseason run assessment tool for Kuskokwim River salmon and is operated the same way each year. The daily Catch Per Unit Effort (CPUE) is used to index run timing and relative abundance of Chinook, chum, sockeye, and coho salmon. These data have only limited utility for estimating total run size or escapement. *The 2015 Chinook salmon, chum salmon, and sockeye salmon*

Informational Packet

data is not directly comparable to prior years due to subsistence fishing restrictions. The Bethel Test Fishery ended operations on August 24.

End of season cumulative CPUE was 625 Chinook salmon, 2,943 chum salmon, 2,158 sockeye salmon, and 2,736 coho salmon. Cumulative CPUE is above average for Chinook salmon and sockeye salmon, and below average for chum salmon and coho salmon.

Coho salmon were the only salmon species passing through the lower portion of the Kuskokwim River at the time BTF ended operations on August 24. Historically, 99% of the coho salmon run has passed the BTF site as of August 24. The 2015 coho salmon run was late compared to the historical average run timing. The BTF continued to catch modest numbers of coho salmon over the final week of operations, averaging 75 fish per day. Given the late run timing, we expect additional coho salmon to pass the Bethel area over the next week. End of season CPUE for coho salmon was similar to the recent 5-year average of 3,039, but less than the recent 10-year average of 3,535. In prior years when BTF cumulative CPUE for coho salmon exceeded 2,000, escapement goals at the Kogrukuk and Kwethluk rivers were achieved, amounts necessary for subsistence (27,400–57,600) were met, and modest commercial harvest opportunity was allowed.

Kwethluk River Weir

The Kwethluk River weir is operated by USFWS and used to index salmon escapement to the lower Kuskokwim River tributaries. As of August 25, a total of 8,150 Chinook salmon, 22,911 chum salmon, 8,917 sockeye salmon, and 6,462 coho salmon have been counted past the weir. Reduced daily passage of Chinook, chum, and sockeye salmon over the past week indicate escapement of those species is effectively over.

On average, the midpoint of the coho salmon escapement is August 26. Cumulative coho salmon escapement to date is the lowest on record for this location. However, daily escapement of coho salmon has increased considerably over the past week. Coho salmon escapement appears to be either late, weak, or both. ADF&G has established an escapement goal of >19,000 coho salmon past the Kwethluk River weir. Inseason projections currently indicate that the coho salmon escapement goal may not be met.

Tuluksak River Weir

The Tuluksak River weir is operated by USFWS. As of August 25, a total of 671 Chinook salmon, 6,076 chum salmon, 764 sockeye salmon, and 2,980 coho salmon have been counted past the weir. Reduced daily passage of Chinook, chum, and sockeye salmon over the past week indicate escapement of those species is effectively over. On average, the midpoint of the coho salmon escapement is August 26. Cumulative escapement of coho salmon is currently below average for this location.

George River Weir

The George River weir is operated by ADF&G and used to index salmon escapement to middle Kuskokwim River tributaries. As of August 25, a total of 2,277 Chinook salmon, 17,218 chum salmon, and 3,812 coho salmon have been counted past the weir. Reduced daily passage of Chinook salmon and chum salmon over the past week indicate escapement of those species is effectively over. On average, the

Informational Packet

midpoint of the coho salmon escapement is August 28. Cumulative escapement of coho salmon is currently below average for this location.

Tatlawiksuk River Weir

The Tatlawiksuk River weir is operated by ADF&G and used to index salmon escapement to middle Kuskokwim River tributaries. As of August 25, a total of 2,094 Chinook salmon, 9,982 chum salmon, and 9,249 coho salmon have been counted past the weir. Reduced daily passage of Chinook salmon and chum salmon over the past week indicate escapement of those species is effectively over. On average, the midpoint of the coho salmon escapement is August 23. Cumulative escapement of coho salmon is currently above average for this location.

Kogrukluk River Weir

The Kogrukluk River weir is operated by ADF&G and used to index salmon escapement to the Holitna River drainage. As of August 25, a total of 7,627 Chinook salmon, 31,451 chum salmon, 6,338 sockeye salmon, and 3,014 coho salmon were counted past the weir. Reduced daily passage of Chinook, chum, and sockeye salmon over the past week indicate escapement of those species is effectively over.

On average, the midpoint of the coho salmon escapement is September 1. Cumulative coho salmon escapement to date is one of the lowest on record for this location. Coho salmon escapement appears to be either late, weak, or both. ADF&G has established an escapement goal of 13,000–28,000 coho salmon past the Kogrukluk River weir. Inseason projections of end of season escapement are currently inconclusive. However, projections based on late run timing scenarios indicate that the coho salmon escapement goal may be met.

Middle Fork Goodnews River weir

The Middle Fork Goodnews River weir is used to monitor escapement to District 5 in Kuskokwim Bay. As of August 25, total passage through the weir is 1,394 Chinook, 54,322 sockeye, 10,819 chum, and 588 coho salmon. Reduced daily passage of Chinook, chum, and sockeye salmon over the past week indicate escapement of those species is effectively over. On average, the midpoint of the coho salmon escapement is August 31. Cumulative escapement of coho salmon is currently the lowest on record for this location.

Commercial Harvest

There are no additional commercial harvest opportunities planned for the Kuskokwim Management Area.

There have been a total of three commercial openers in District W1, downriver from Bethel. The first commercial opener was August 10. Total harvest from those three periods was 5 Chinook, 129 sockeye, 514 chum, and 64,994 coho salmon. Total harvest of all species is below average.

There have been a total of 17 commercial openers in District W4. The first commercial opener was July 3. Total harvest is 7,533 Chinook, 16,139 chum, 30,272 sockeye, and 75,264 coho salmon. Harvest is below average for Chinook salmon, chum salmon, and sockeye salmon. Coho salmon harvest is above average.

Informational Packet

There have been a total of 13 commercial openers in District W5. The first commercial opener was July 3. Total harvest is 705 Chinook, 4,510 chum, 25,861 sockeye, and 7,030 coho salmon. Harvest is below average for all species.

Informational Packet

Bering Sea Fishermen's Association

Kuskokwim Chinook Salmon Management Capacity Building Workshop

Joe Parent Building, Kuspuks School District

Aniak, Alaska

November 4-5, 2014

Workshop Objectives

1. Build awareness of and interest in a participatory process of Structured Decision Making to inform future management of Kuskokwim Chinook fisheries
2. Introduce a representative group of Kuskokwim regional stakeholders to the concepts that underlie the use of simulation models to inform management of salmon populations
3. Identify key stakeholder-centered objectives for management of the Chinook salmon fishery, in particular to inform:
 - a. Criteria for assessing performance of management strategies intended to allow adequate levels of subsistence harvest while protecting the individual tributary spawning populations throughout the basin
 - b. Criteria for assessing performance of in-season management strategies (sets of tactics aimed at collectively achieving one or more objectives) intended to protect Chinook salmon stocks while allowing adequate levels of subsistence fishing
4. Identify potential management strategy alternatives worth considering for achievement of these objectives.