

Kuskokwim River Salmon Management Working Group

1 (800) 315-6338 (MEET) Code: 58756# (KUSKO)

ADF&G Bethel toll free: 1 (855) 933-2433

Meeting Agenda

Date: 06/07/2017

Time: 10:00 a.m.

Place: Bethel

Time Called to Order:

Chair:

ROLL CALL TO ESTABLISH QUORUM:

Upriver Elder:

Downriver Elder:

Commercial Fisher:

Lower River Subsistence:

Middle River Subsistence:

Upper River Subsistence:

Headwaters Subsistence:

QUORUM MET? Yes / No

Processor:

Member at Large:

Sport Fisher:

Western Interior RAC:

Y-K Delta RAC:

KRITFC:

ADF&G:

INTRODUCTIONS:

INVOCATION:

APPROVAL OF AGENDA: *the agenda may be amended at this time.*

APPROVAL OF MINUTES: *Optional. ADF&G does not prepare official meeting minutes.*

ADF&G MANAGEMENT ACTIONS UNDER CONSIDERATION:

PEOPLE TO BE HEARD:

CONTINUING BUSINESS:

- Subsistence Reports: Lowest River, ONC Inseason Subsistence Report, Lower River, Middle River, Upper River, Headwaters.
- Overview of Kuskokwim River salmon run assessment/ discussion of ADF&G considerations:
 - a. Test Fisheries (Bethel and Aniak):
 - b. Sonar/Weirs/Mark-Recapture/Aerial Surveys/Other:
- Commercial Catch Report: N/A
- Processor Report:
- Sport Fish Report:
- Intercept Fishery Report: *optional*
- Weather Forecast:
- Discussion of ADF&G Management considerations and discussion of possible alternatives (recommendations from the Working Group):
- Motion for Discussion and Action:

OLD BUSINESS:

NEW BUSINESS:

COMMENTS FROM WORKING GROUP MEMBERS:

NEXT MEETING DATE: _____ **Time:** _____ **Place:** _____

Informational Packet

Information Packets *ARE*:

- **Intended to help inform Working Group discussions.**
- **To be viewed and used in context with Working Group meetings only.**

Packets *ARE NOT*:

- **To be viewed as standalone documents.**
- **A final say on fisheries management decisions.**

Please use this information responsibly:

Packet information is an incomplete snapshot of an ongoing discussion and changing conditions. Packet information should not be reproduced for any purpose other than to describe Working Group meeting discussions.

Misuse of Packet information can contribute to misunderstandings that can **cause harm to salmon users** and potentially **damage salmon resources**.

Ask Questions: ADF&G staff will be happy to answer biology and management questions. Please call **1-855-933-2433** to reach ADF&G Kuskokwim Area staff.

Attend Meetings: Each Working Group meeting is announced at least 48 hours prior to time and date of meeting. In addition, each meeting is recorded. Recordings can be found here:
http://www.adfg.alaska.gov/index.cfm?adfg=commercialbyarea_kuskokwim.kswg

Viewing the information packet while listening to meetings/recordings will provide a better understanding of the information presented in this packet.

Thank you.
Jennifer Peeks
Aaron Poetter
Working Group Coordinators

Informational Packet

Kuskokwim River Salmon Assessment Update: 6/5/2017



This document presents the key assessment information considered by managers in-season. The production of this document is a collaborative effort between the ADF&G and USFWS. **All data and analyses contained are preliminary and are subject to change, so please make interpretations carefully.**

If you have any questions about the content, please contact Ben Staton (USFWS; benjamin_staton@fws.gov) or Zachary Liller (ADF&G; zachary.liller@alaska.gov).

Table of Contents:

- **Page 2:** Chinook Bethel Test Fishery Information
- **Page 3:** Chum/Sockeye:Chinook Ratio Information
- **Page 4:** Chinook Appendix

Abbreviations:

- BTF: Bethel Test Fishery
- ATF: Aniak Test Fishery
- CPUE: Catch-per-unit-effort
- EOS: End-of-Season

To view escapement information, please visit the ADF&G Kuskokwim River Fish Counts page:

- <http://www.adfg.alaska.gov/index.cfm?adfg=commercialbyareakuskokwim.salmon#fishcounts>

For the most up-to-date information regarding fishing opportunities please visit:

- **USFWS:** https://www.fws.gov/refuge/yukon_delta/wildlife_and_habitat/dailyupdate.html
- **ADF&G:** http://www.adfg.alaska.gov/index.cfm?adfg=cfnews_mobile.main

Sonar Update

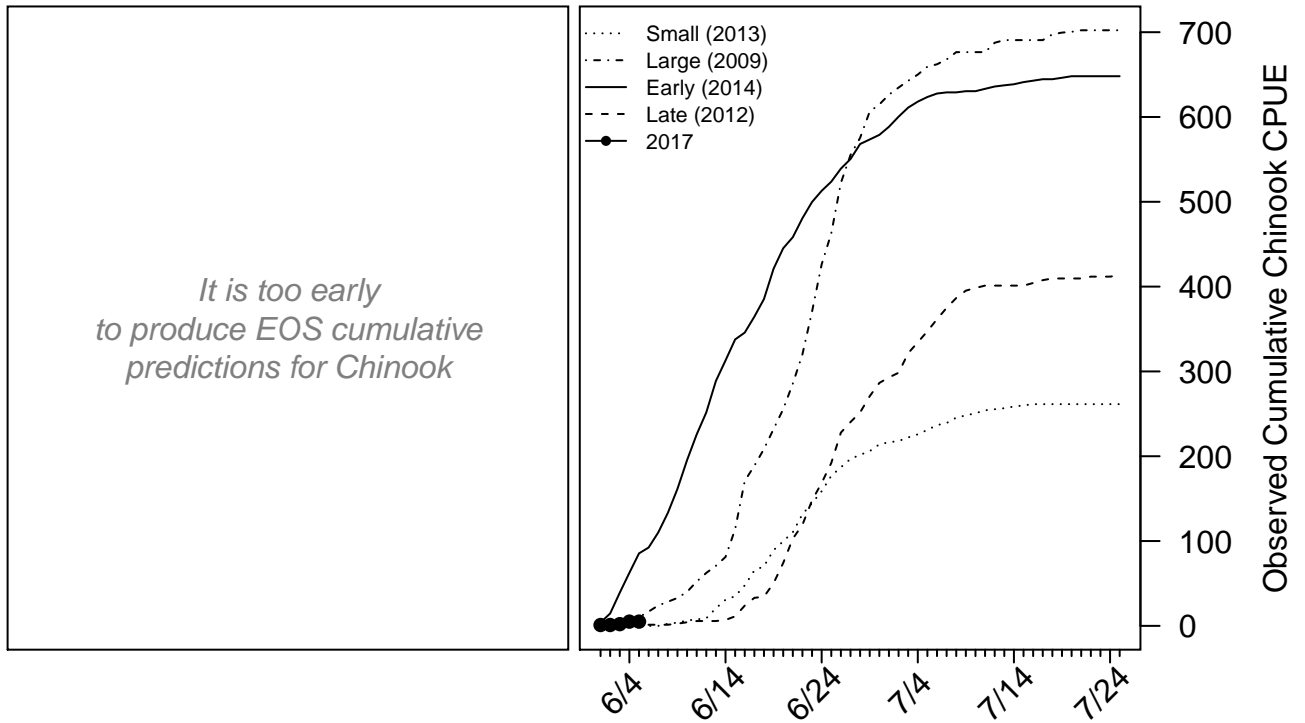
The Kuskokwim River sonar project began partial operations on June 1 and full operations on June 3. Estimates of salmon abundance based on the sonar will be included in this document once more catch information becomes available.

Informational Packet

Chinook (6/5)

- The BTF daily CPUE was **0**.
- The BTF cumulative CPUE is **5**.
- **33%** years since 2008 fell below this cumulative CPUE.
- **4%** of the run is complete based on historical average run timing.
- **5%** of the run is complete based on a preliminary run timing forecast (final forecast will be available around 6/10).
- Late run scenarios are considered highly unlikely at this time due to the preliminary timing forecast (1.4 days early).
- **5 - 7%** of the run is expected to pass in the next 5 days.
- Over the last 3 days, Chinook salmon made up **100%** of the BTF catches, compared to **70%** on average.

Chinook Figure 1. *Left:* will show predicted cumulative EOS BTF CPUE according to various run timing scenarios when enough data have been collected. *Right:* The cumulative BTF CPUE from 2017 plotted along with four previous years intended to represent a range of early/late and small/large index values.



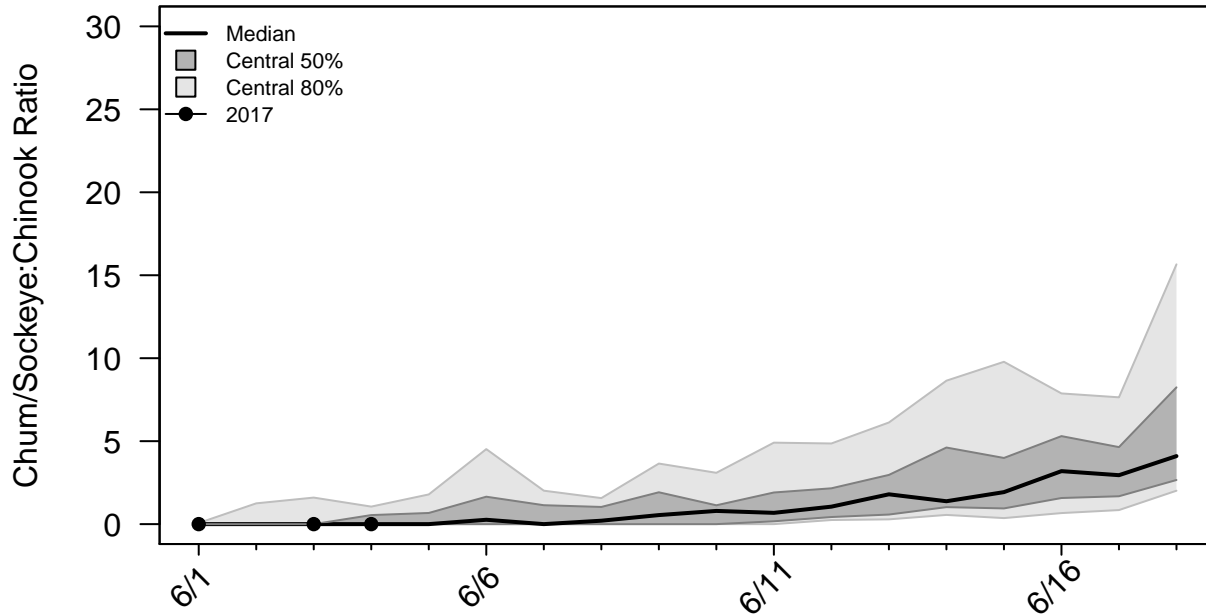
For more detailed information, see the Chinook appendix at the end of this document.

Informational Packet

Chum/Sockeye:Chinook Ratio

This ratio is calculated by dividing the total number of chum and sockeye counted by the number of Chinook counted by a project. A value of zero indicates Chinook were counted, but not chum or sockeye. A missing value on a day the project operated indicates no Chinook were counted.

Ratio Figure 1. Time series of the species ratio with historical quantiles shown as grey regions and the ratio time series for 2017 shown with points connected by lines.



Ratio Table 1. A subset of the species ratios displayed in **Ratio Figure 1**, including the ratios from the sonar project and ATF.

Date	2017 BTF	BTF Median	BTF Lower 10%	BTF Upper 10%	2017 Sonar	2017 ATF
6/2	–	0	0	1.25	0	–
6/3	0	0	0	1.6	–	–
6/4	0	0	0	1.06	–	0
6/5	–	0	0	1.79	–	–
6/6	–	0.26	0	4.52	–	–
6/7	–	0	0	2.02	–	–
6/8	–	0.21	0	1.57	–	–

Ratio Table 2. The probability that a given species ratio will be exceeded by a certain day in the BTF (calculated based on all previous years: 1984 - 2016).

Date	Ratio > 1	Ratio > 3	Ratio > 5	Ratio > 10	Ratio > 20
6/2	0.06	0.03	0.03	0	0
6/3	0.09	0.03	0.03	0	0
6/4	0.12	0.03	0.03	0	0
6/5	0.27	0.09	0.03	0	0
6/6	0.42	0.18	0.09	0	0
6/7	0.52	0.21	0.09	0	0
6/8	0.58	0.24	0.09	0	0

Informational Packet

Chinook Appendix

Chinook Table A1. Cumulative CPUE from the BTF.

Date	2017	2016	2015	2014	2013	5-Yr Avg.	2008 - 2016 Avg.
6/2	1	16	14	15	0	9	6
6/3	2	31	14	39	0	17	11
6/4	5	40	20	63	0	25	17
6/5	5	53	24	85	0	33	23
6/6	–	60	35	92	0	38	28
6/7	–	78	53	110	0	48	36
6/8	–	89	60	133	2	57	44
EOS	–	681	625	650	261	527	556

Chinook Table A2. Cumulative CPUE from the ATF.

Date	2017	2016	2015
6/2	0	108	38
6/3	0	182	38
6/4	8	234	64
6/5	8	251	64
6/6	–	300	64
6/7	–	344	81
6/8	–	397	98
EOS	–	2,729	2,916

Chinook Table A3. Percent of run complete according to various historical run timing scenarios and the preliminary 2017 run timing forecast (with forecast uncertainty).

Timing	Historical Midpoint	Historical 6/5 Cumulative %	Forecasted Midpoint	Forecasted 6/5 Cumulative %
Earliest	6/15	15%	6/15	17%
Early 10%	6/18	10%	6/17	12%
Early 25%	6/21	7%	6/19	8%
Median	6/23	4%	6/21	5%
Late 25%	6/24	2%	6/23	3%
Late 10%	6/26	2%	6/25	2%
Latest	7/3	0%	6/27	1%