

# Kuskokwim River Salmon Management Working Group

1 (800) 315-6338 (MEET) Code: 58756# (KUSKO)

ADF&G Bethel toll free: 1 (855) 933-2433

## Meeting Agenda

Date: 07/6/2020

Time: 6:00 p.m.

Place: Teleconference

Time Called to Order:

Chair: Alissa Rogers

### ROLL CALL TO ESTABLISH QUORUM:

Upriver Elder:  
Downriver Elder:  
Commercial Fisher:  
Lower River Subsistence:  
Middle River Subsistence:  
Upper River Subsistence:  
Headwaters Subsistence:

### QUORUM MET? Yes / No

Processor:  
Member at Large:  
Sport Fisher:  
Western Interior RAC:  
Y-K Delta RAC:  
KRITFC:  
ADF&G:

### INTRODUCTIONS:

### INVOCATION:

**APPROVAL OF MINUTES:** *Optional. ADF&G does not prepare official meeting minutes.*

**APPROVAL OF AGENDA:** *the agenda may be amended at this time.*

### USFWS/KRITFC UPDATE:

### ADF&G MANAGEMENT ACTIONS UNDER CONSIDERATION:

**PEOPLE TO BE HEARD:** *Non-Working Group Members*

### CONTINUING BUSINESS:

- Subsistence Reports: Lowest River, ONC Inseason Subsistence Report, Lower River, Middle River, Upper River, Headwaters
- Overview of Kuskokwim River salmon run assessment:
  - a. Test Fisheries (Bethel and Aniak):
  - b. Sonar/Weirs/Aerial Surveys/Other:
  - c. Subsistence Division Project Update:
  - d. NVN Report:
- Commercial Catch Report: N/A
- Processor Report: N/A
- Sport Fish Report:
- Intercept Fishery Report: *optional*
- Weather Forecast:
- Discussion of ADF&G Management considerations and discussion of possible alternatives (recommendations from the Working Group):
- Motion for Discussion and Action:

### OLD BUSINESS:

- Meeting attendance and vacant seats

### NEW BUSINESS:

### COMMENTS FROM WORKING GROUP MEMBERS:

**NEXT MEETING DATE:** \_\_\_\_\_ **Time:** \_\_\_\_\_ **Place:** \_\_\_\_\_

## **Informational Packet**

### **Information Packets *ARE*:**

- **Intended to help inform Working Group discussions.**
- **To be viewed and used in context with Working Group meetings only.**

### **Packets *ARE NOT*:**

- **To be viewed as standalone documents.**
- **A final say on fisheries management decisions.**

### **Please use this information responsibly:**

Packet information is an incomplete snapshot of an ongoing discussion and changing conditions. Packet information should not be reproduced for any purpose other than to describe Working Group meeting discussions.

**Misuse** of Packet information can contribute to misunderstandings that can **cause harm to salmon users** and potentially **damage salmon resources**.

**Ask Questions:** ADF&G staff will be happy to answer biology and management questions. Please call **1-855-933-2433** to reach ADF&G Kuskokwim Area staff.

**Attend Meetings:** Each Working Group meeting is announced at least 48 hours prior to time and date of meeting. In addition, each meeting is recorded. Recordings can be found here:  
**[http://www.adfg.alaska.gov/index.cfm?adfg=commercialbyarea\\_kuskokwim.kswg](http://www.adfg.alaska.gov/index.cfm?adfg=commercialbyarea_kuskokwim.kswg)**

Viewing the information packet while listening to meetings/recordings will provide a better understanding of the information presented in this packet.

**Thank you,**  
**Lily Reichard**  
**Working Group Coordinator**

## **Orutsararmiut Native Council (ONC) Inseason Harvest Monitoring Weekly Report**

**July 6, 2020**

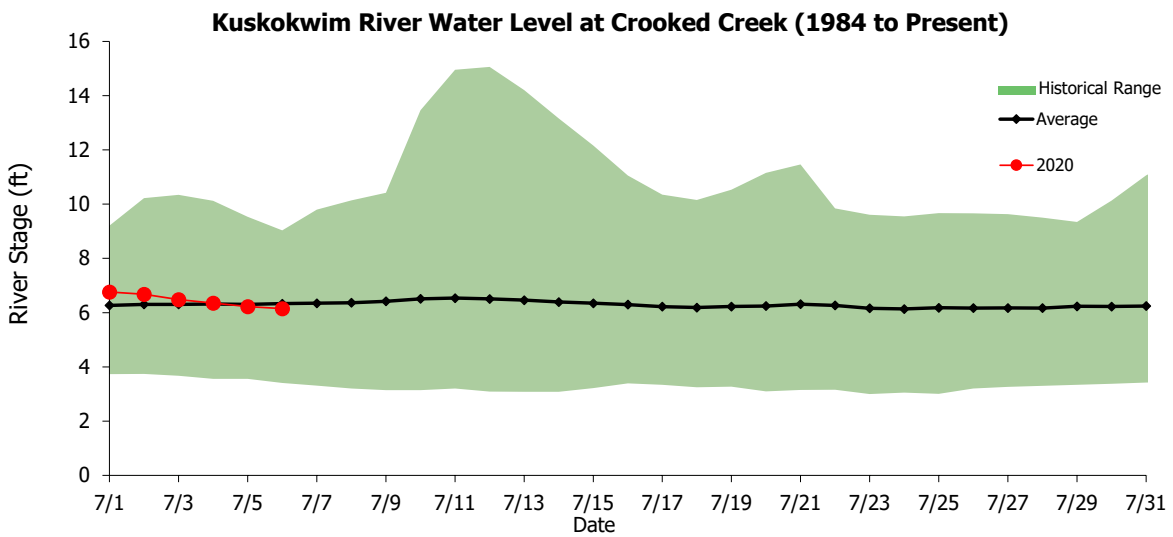
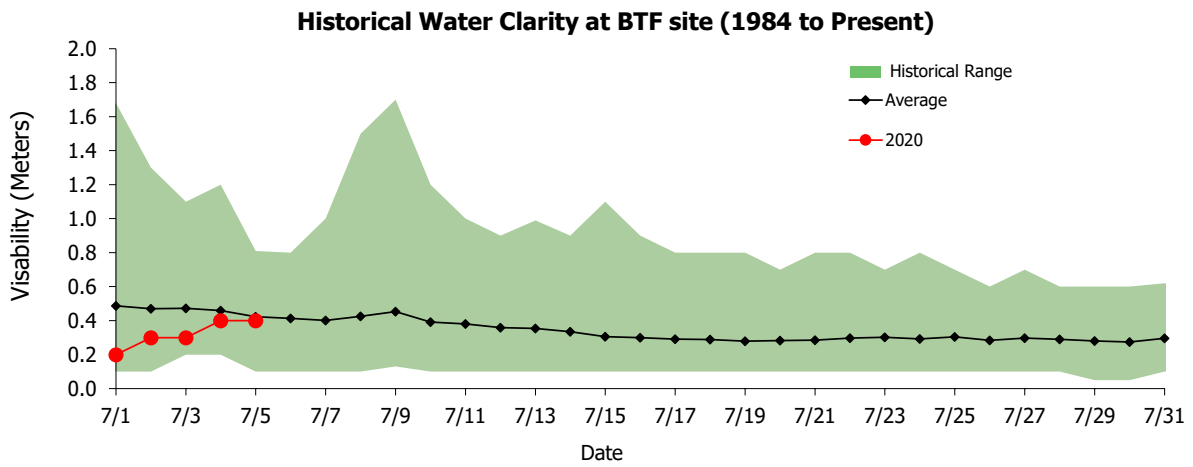
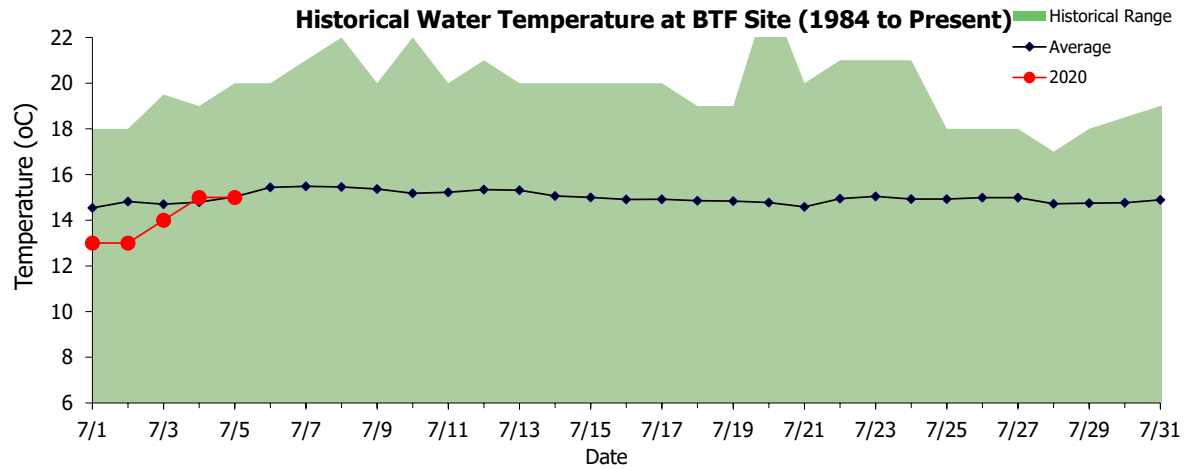
On July 5 and 6, ONC contacted 33 Bethel area fish camps telephonically to inquire if fishers had any comments or concerns regarding the management and/or health of the fishery. Our crew also shared updates from managers at the June 29 KRSMWG meeting and provided interested fishers with the call-in number and code for the July 6 KRSMWG meeting. The majority of comments shared with us were regarding the current management of the fishery. Most fishers requested managers to consider opening the fishery soon and stated there are lots of fish jumping in the river to support additional fishing opportunities. Several people stated there have not been enough fishing opportunities provided for people this year. Other fishers mentioned the challenges with being able to fish in June because all of the opportunities provided were on work days. There are a few families who typically wait to fish July 1 and have yet to hang any fish up. Several fishers also commented on the humid conditions and difficulties with drying fish in July. There was concern expressed regarding not having enough fish to last through the winter because of the fisheries closures this season and are especially worried because of uncertainties associated with COVID-19 this fall and winter and the stresses the pandemic is putting on families and threats to food sovereignty.

Fishers also stated there is inadequate representation for the Bethel area in the management arena and that fisheries management should not be political, rather it should be based on science and tradition. Three fishers questioned the need for a 10:1 chum and sockeye salmon to Chinook salmon ratio to open the fishery and claimed that was inconsistent with last year's management action. One fisher suggested the need to reevaluate the current management systems in place. People also stated fishers upriver are catching a lot of fish while people in the lower section of the river are struggling to meet their needs and have to combat fish. A few fishers expressed deep concern about the commercial fishery in Quinhagak, especially when subsistence users in the lower Kuskokwim River are unable to fish. One fisher expressed gratitude for conservation but also felt the ratios were good enough to support opening the fishery.

Regarding fishing activity, there were a few fishers who have been fishing in the Gweek. People are grateful for the opportunity to fish in non-spawning salmon tributaries. Fishers set netting in the Gweek have been catching on average 10-15 sockeye salmon a day with a couple of larger Chinook salmon periodically. One fishing family reported catching 35 sockeye salmon in just a couple hours of drifting in the Gweek over the weekend. People also reported catching a few fish dipnetting, but another fishing family reported that it was too difficult and preferred drifting.

### **Fish Distribution**

From June 29-July 5, we delivered 63 Chinook salmon, 136 chum salmon and 133 sockeye salmon to Bethel area Elders, widows and disabled. We also provided fish to Tundra Women's Coalition and ONC Senior Services Department to support their Elders Meals on Wheels Program. These fish were caught by the Alaska Department of Fish & Game Bethel Test Fishery.



# Kuskokwim River Salmon Assessment Update

## 7/5/2020

---



This document presents the key assessment information considered by managers in-season. The production of this document is a collaborative effort between USFWS and ADF&G. **All data and analyses contained are preliminary and are subject to change, so please make interpretations carefully.**

If you have any questions about the content, please contact Gary Decossas (USFWS; [gary\\_decossas@fws.gov](mailto:gary_decossas@fws.gov)) or Sean Larson (ADF&G; [sean.larson@alaska.gov](mailto:sean.larson@alaska.gov)). Major credit for the development of this data packet belongs to Ben Staton.

### Table of Contents:

#### Bethel Test Fishery Summaries

- Page 2: [Chinook Salmon](#)
- Page 3: [Chum Salmon](#)
- Page 4: [Sockeye Salmon](#)

#### Species Composition Summaries

- Page 5: [Chum/Sockeye:Chinook Salmon Ratio](#)
- Page 6: [Percent Composition](#)

#### Appendices

- Page 7: [Sonar Passage Estimates](#)
- Page 8: [In-Season Harvest Estimates](#)
- Page 9: [Chinook Salmon](#)
- Page 10: [Chum Salmon](#)
- Page 11: [Sockeye Salmon](#)

#### Abbreviations:

- BTF: Bethel Test Fishery
- ATF: Aniak Test Fishery
- CPUE: Catch-per-unit-effort
- EOS: End-of-Season
- ADF&G: Alaska Department of Fish and Game
- KRITFC: Kuskokwim River Inter-tribal Fisheries Commission
- OTNC: Orutsaramiut Traditional Native Council
- USFWS: United States Fish and Wildlife Service
- YDNWR: Yukon Delta National Wildlife Refuge

To view escapement information, please visit the ADF&G Kuskokwim River Fish Counts page:

- <http://www.adfg.alaska.gov/index.cfm?adfg=commercialbyareakuskokwim.salmon#fishcounts>

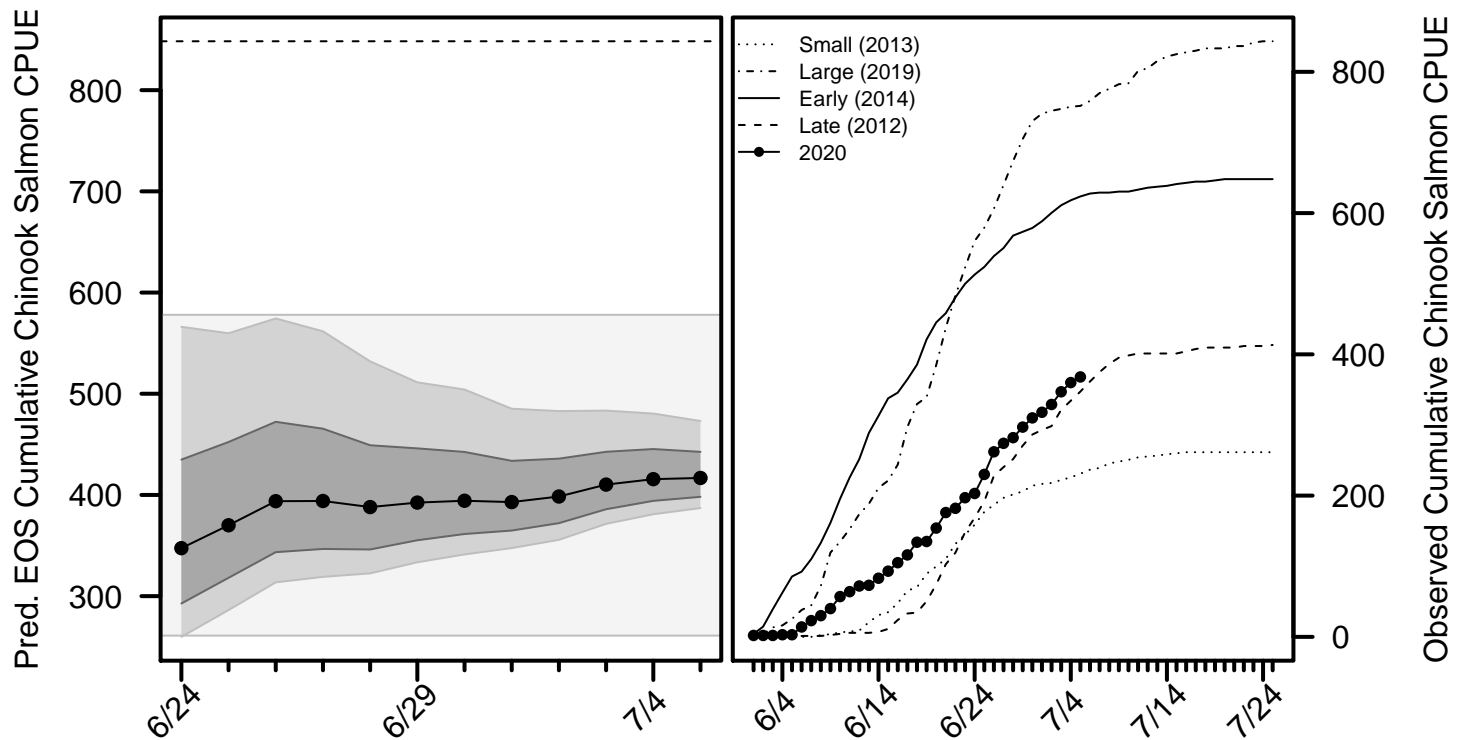
For the most up-to-date information regarding fishing opportunities please visit:

- USFWS: [https://www.fws.gov/refuge/yukon\\_delta/wildlife\\_and\\_habitat/dailyupdate.html](https://www.fws.gov/refuge/yukon_delta/wildlife_and_habitat/dailyupdate.html)
- ADF&G: <http://www.adfg.alaska.gov/index.cfm?adfg=cfnews.main>

# Chinook Salmon BTF Summary (7/5)

- The BTF daily CPUE was **8**.
- The BTF cumulative CPUE is now **368**.
- **25%** years since 2008 fell below this cumulative CPUE on this date.
- **88%** of the run is complete based on historical average run timing.
- **83% - 92%** of the run is complete based the central 50% of all historical run timing scenarios.
- **4% - 7%** of the run is expected to pass Bethel in the next 5 days.
- Over the last 3 days, Chinook salmon made up **8%** of the BTF catches, compared to **3%** on average.

**Chinook Salmon Figure 1.** *Left:* predicted cumulative EOS BTF CPUE according to various run timing scenarios: central 80% (light grey band), central 50% (dark grey band), and the historical median (circles). The grey box shows the range of EOS values from 2010 - 2013, which indexed run sizes past Bethel ranging from 60,000 to 82,000. The dashed horizontal line shows the EOS value from 2019. *Right:* The cumulative BTF CPUE from 2020 plotted along with four previous years intended to represent a range of early/late and small/large index values.



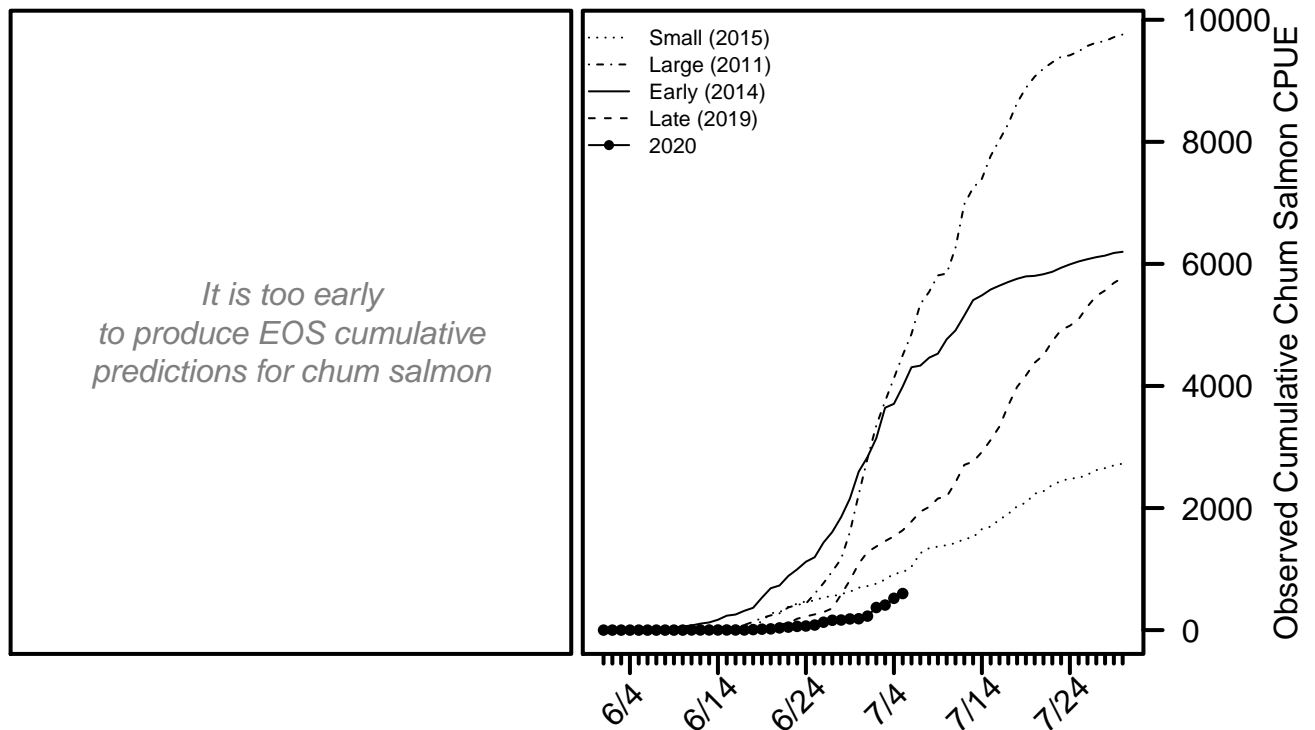
For more detailed information, see the [Chinook salmon appendix](#) at the end of this document.

[Return to Table of Contents](#)

## Chum Salmon BTF Summary (7/5)

- The BTF daily CPUE was **78**.
- The BTF cumulative CPUE is now **599**.
- **0%** years since 2008 fell below this cumulative CPUE on this date.
- **52%** of the run is complete based on historical average run timing.
- **40% - 64%** of the run is complete based the central 50% of all historical run timing scenarios.
- **16% - 18%** of the run is expected to pass Bethel in the next 5 days.
- Over the last 3 days, chum salmon made up **50%** of the BTF catches, compared to **68%** on average.

**Chum Salmon Figure 1.** *Left:* will show predicted cumulative EOS BTF CPUE according to various run timing scenarios when enough data have been collected. *Right:* The cumulative BTF CPUE from 2020 plotted along with four previous years intended to represent a range of early/late and small/large index values.



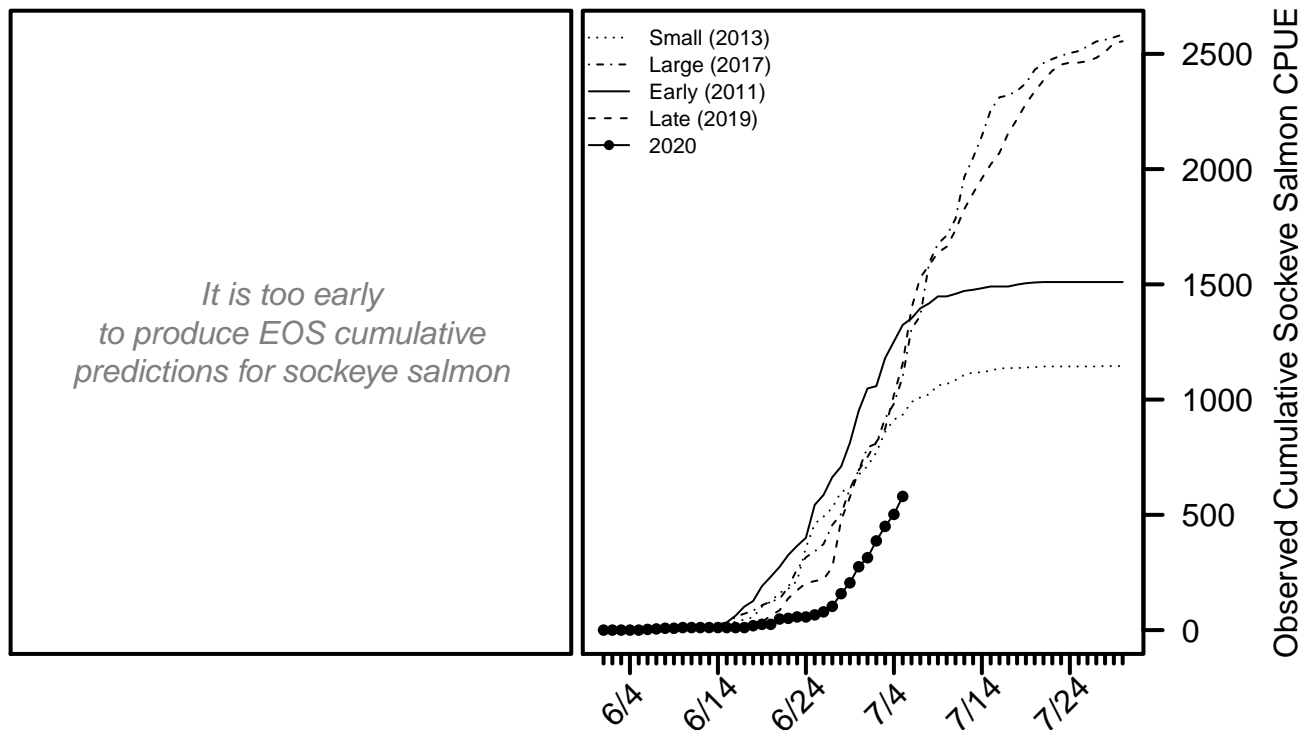
For more detailed information, see the [chum salmon appendix](#) at the end of this document.

[Return to Table of Contents](#)

## Sockeye Salmon BTF Summary (7/5)

- The BTF daily CPUE was **78**.
- The BTF cumulative CPUE is now **580**.
- **0%** years since 2008 fell below this cumulative CPUE on this date.
- **80%** of the run is complete based on historical average run timing.
- **66% - 90%** of the run is complete based the central 50% of all historical run timing scenarios.
- **8% - 18%** of the run is expected to pass Bethel in the next 5 days.
- Over the last 3 days, sockeye salmon made up **42%** of the BTF catches, compared to **28%** on average.

**Sockeye Salmon Figure 1.** *Left:* will show predicted cumulative EOS BTF CPUE according to various run timing scenarios when enough data have been collected. *Right:* The cumulative BTF CPUE from 2020 plotted along with four previous years intended to represent a range of early/late and small/large index values.



For more detailed information, see the [sockeye salmon appendix](#) at the end of this document.

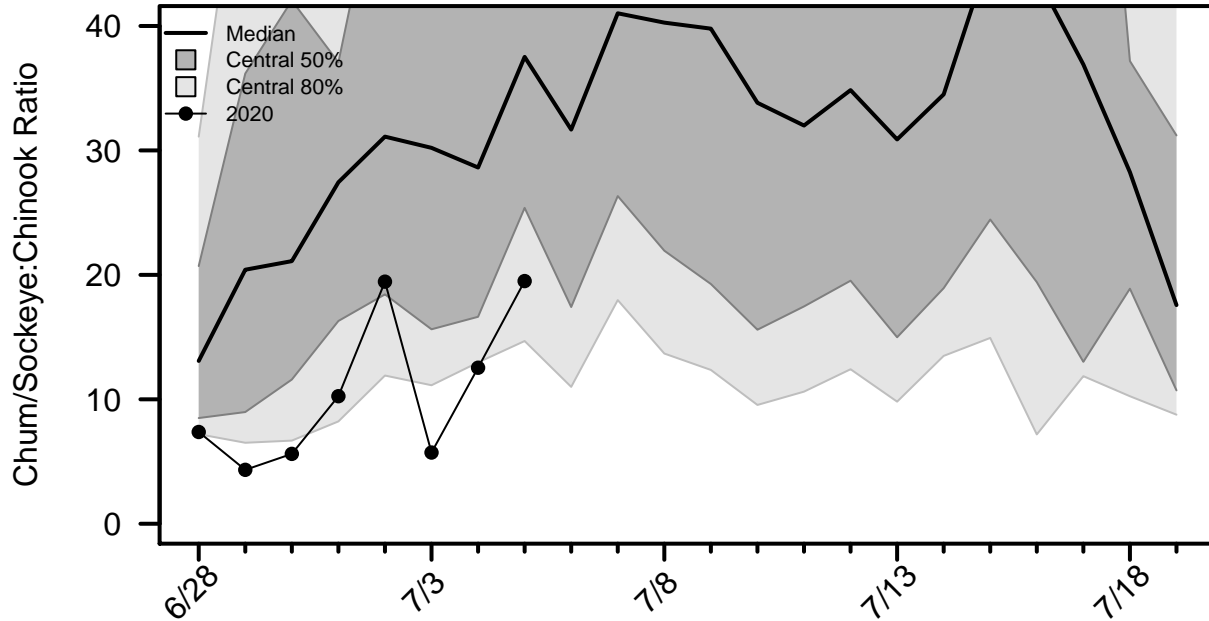
[Return to Table of Contents](#)



# Chum/Sockeye:Chinook Salmon Ratio

This ratio is calculated by dividing the total number of chum and sockeye salmon counted by the number of Chinook salmon counted by a project each day. A value of zero indicates Chinook salmon were counted that day, but not chum or sockeye salmon. A missing value on a day the project operated indicates no Chinook salmon were counted that day.

**Species Ratio Figure 1.** Time series of the species ratio in the BTF with historical quantiles shown as grey regions and the ratio time series for 2020 shown with points connected by lines.



**Ratio Table 1.** A subset of the species ratios displayed in **Ratio Figure 1**, including the ratios from the ATF.

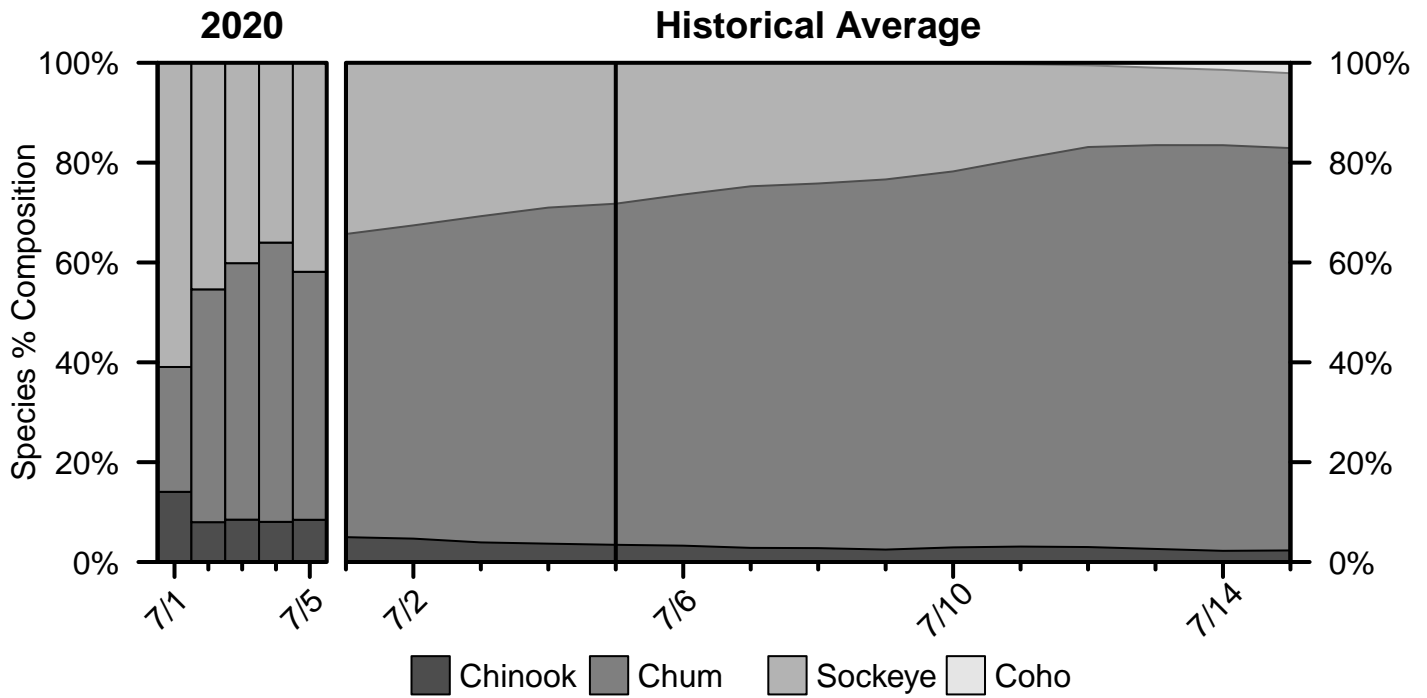
Date	2020 BTF	BTF Median	BTF Lower 10%	BTF Upper 10%	2020 ATF
7/2	19.45	31.11	11.91	79.48	1.52
7/3	5.72	30.21	11.13	74.16	0.42
7/4	12.54	28.63	12.96	89.51	2.28
7/5	<b>19.5</b>	<b>37.52</b>	<b>14.68</b>	<b>77.13</b>	<b>2.02</b>
7/6		31.67	11	115.5	
7/7		41.02	17.97	101.6	
7/8		40.27	13.68	101.8	

**Ratio Table 2.** The percent of previous years in which a given species ratio was exceeded at least once before a certain day in the BTF.

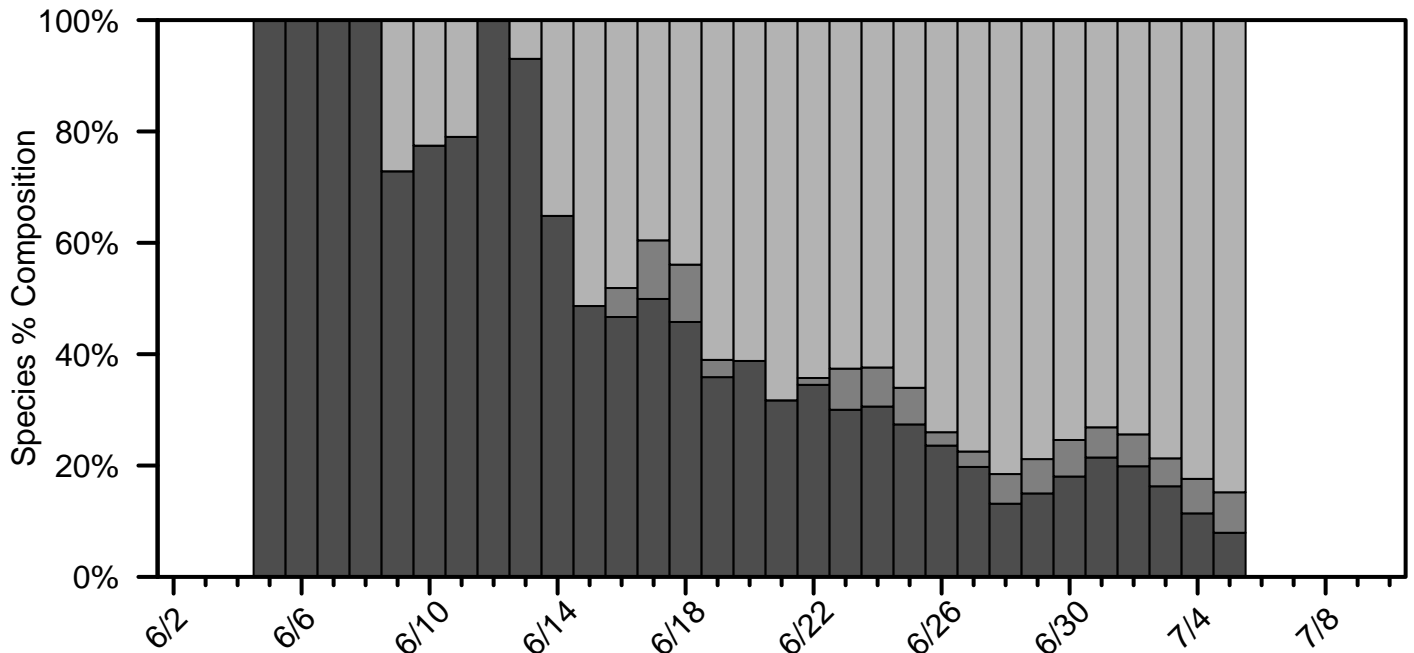
Date	Ratio > 3	Ratio > 5	Ratio > 7	Ratio > 10	Ratio > 20
7/2	100%	100%	100%	100%	86%
7/3	100%	100%	100%	100%	89%
7/4	100%	100%	100%	100%	94%
7/5	<b>100%</b>	<b>100%</b>	<b>100%</b>	<b>100%</b>	<b>97%</b>
7/6	100%	100%	100%	100%	97%
7/7	100%	100%	100%	100%	97%
7/8	100%	100%	100%	100%	100%

# Percent Composition by Salmon Species

**Percent Composition Figure 1.** Species percent composition in the BTF from 2020 and based on the historical average. The composition presented on each day represents the average composition over the past 3 days.



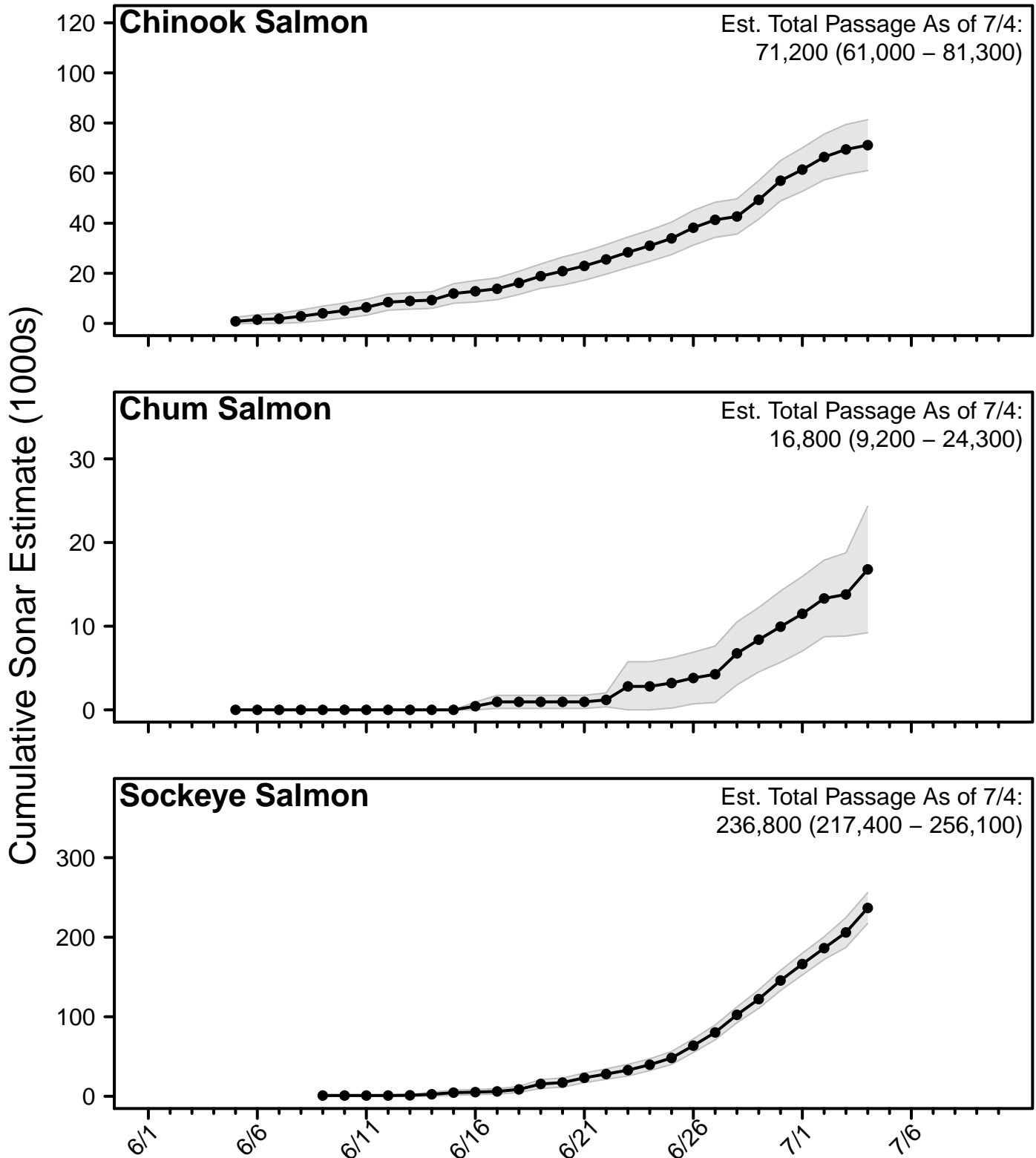
**Species Composition Figure 2.** Species percent composition from the sonar estimates from 2020 (salmon species only, excluding pink salmon). The composition presented on each day represents the average composition over the past 3 days.



[Return to Table of Contents](#)

# Sonar Passage Estimates

**Sonar Figure 1.** Cumulative estimates of salmon passage from the 2020 sonar operation through the last complete reporting day. Grey bands show the 95% confidence intervals on each complete reporting day.



[Return to Table of Contents](#)

## In-Season Harvest Estimates

In-season harvest estimates are produced by combining counts of total fishing effort (usually obtained via aerial survey) and on-the-ground fisher interview information using statistically-rigorous methodology. The data collection efforts to produce these estimates is a highly collaborative effort, involving staff from ADF&G, KRITFC, OTNC, and USFWS. Although USFWS performs the data analysis and harvest estimation, all estimates undergo technical review by a panel comprised of representatives from each of these entities.

Much more detailed information can be found on the YDNWR website ([https://www.fws.gov/refuge/yukon\\_delta/wildlife\\_and\\_habitat/dailyupdate.html](https://www.fws.gov/refuge/yukon_delta/wildlife_and_habitat/dailyupdate.html)).

In the tables below, CV stands for coefficient of variation, which is a commonly-used measure of uncertainty in the estimate (larger CV values are more uncertain). Note: Harvest estimates from the June 24 opportunity and not available.

**Harvest Table 1.** Estimated total Chinook salmon harvest within the YDNWR, excluding the section between Akiak and Kalskag.

Date	Daily Harvest	Cumulative Harvest	Daily CV	Cumulative CV
<b>6/3</b>	180	180	54.02	54.02
<b>6/6</b>	570	740	20.48	10.96
<b>6/9</b>	670	1,450	14.74	10.07
<b>6/12</b>	3,090	4,480	11	6.61
<b>6/15</b>	5,080	9,380	10	4.93
<b>6/18</b>	8,160	17,500	6	3.72

**Harvest Table 2.** Estimated total chum salmon harvest within the YDNWR, excluding the section between Akiak and Kalskag.

Date	Daily Harvest	Cumulative Harvest	Daily CV	Cumulative CV
<b>6/3</b>	0	0	0	0
<b>6/6</b>	90	90	26.16	18.94
<b>6/9</b>	60	150	40.55	13.62
<b>6/12</b>	460	580	21	7.58
<b>6/15</b>	790	1,370	13	5.69
<b>6/18</b>	2,040	3,330	10	4.34

**Harvest Table 3.** Estimated total sockeye salmon harvest within the YDNWR, excluding the section between Akiak and Kalskag.

Date	Daily Harvest	Cumulative Harvest	Daily CV	Cumulative CV
<b>6/3</b>	0	0	0	0
<b>6/6</b>	20	20	52.22	15.78
<b>6/9</b>	30	50	61.24	12.31
<b>6/12</b>	90	140	22	8.76
<b>6/15</b>	610	750	13	9.85
<b>6/18</b>	2,060	2,920	12	15.82

[Return to Table of Contents](#)

# Chinook Salmon Appendix

**Chinook Salmon Table A1.** Cumulative CPUE from the BTF.

Date	2020	2019	2018	2017	2016	5-Yr Avg.	2008 - 2019 Avg.
<b>7/2</b>	329	745	522	257	522	500	466
<b>7/3</b>	347	748	546	266	531	511	478
<b>7/4</b>	360	751	558	278	542	523	489
<b>7/5</b>	<b>368</b>	<b>752</b>	<b>582</b>	<b>284</b>	<b>564</b>	<b>535</b>	<b>500</b>
<b>7/6</b>		759	590	289	578	544	507
<b>7/7</b>		770	597	296	596	554	515
<b>7/8</b>		776	602	304	601	560	522
<b>EOS</b>		848	667	374	687	640	575

**Chinook Salmon Table A2.** Cumulative CPUE from the ATF.

Date	2020	2019	2018	2017	2016
<b>7/2</b>	1,000	1,553	491	4,258	2,207
<b>7/3</b>	1,141	1,586	522	4,522	2,267
<b>7/4</b>	1,223	1,628	531	4,943	2,372
<b>7/5</b>	<b>1,298</b>	<b>1,691</b>	<b>570</b>	<b>5,293</b>	<b>2,418</b>
<b>7/6</b>		1,691	629	5,604	2,479
<b>7/7</b>		1,691	661	5,766	2,522
<b>7/8</b>		1,691	725	5,908	2,556
<b>EOS</b>		1,691	820	6,508	2,729

**Chinook Salmon Table A3.** Percent of run complete according to various historical run timing scenarios from the BTF.

Timing	Midpoint	7/5 Cumulative %
<b>Earliest</b>	6/13	97%
<b>Early 10%</b>	6/16	95%
<b>Early 25%</b>	6/20	92%
<b>Median</b>	6/21	88%
<b>Late 25%</b>	6/23	83%
<b>Late 10%</b>	6/26	78%
<b>Latest</b>	7/2	71%

[Return to Table of Contents](#)

## Chum Salmon Appendix

Chum Salmon Table A1. Cumulative CPUE from the BTF.

Date	2020	2019	2018	2017	2016	5-Yr Avg.	2008 - 2019 Avg.
7/2	370	1,369	1,990	2,574	886	1,516	2,095
7/3	410	1,458	2,144	2,744	943	1,623	2,328
7/4	521	1,536	2,380	2,849	1,028	1,743	2,538
7/5	<b>599</b>	<b>1,636</b>	<b>2,578</b>	<b>3,030</b>	<b>1,166</b>	<b>1,871</b>	<b>2,763</b>
7/6		1,780	2,627	3,346	1,290	2,017	2,983
7/7		1,940	2,746	3,691	1,410	2,210	3,229
7/8		2,018	3,270	4,088	1,618	2,467	3,458
<b>EOS</b>		6,427	8,212	6,785	3,894	5,652	6,657

Chum Salmon Table A2. Cumulative CPUE from the ATF.

Date	2020	2019	2018	2017	2016
7/2	574	593	2,656	3,112	1,915
7/3	628	634	3,129	3,724	2,091
7/4	809	778	3,445	4,670	2,429
7/5	<b>961</b>	<b>1,051</b>	<b>3,958</b>	<b>5,664</b>	<b>2,655</b>
7/6		1,051	4,603	6,499	2,937
7/7		1,051	5,066	7,323	3,333
7/8		1,051	5,493	7,832	3,392
<b>EOS</b>		1,051	10,277	11,588	5,304

Chum Salmon Table A3. Percent of run complete according to various historical run timing scenarios from the BTF.

Timing	Midpoint	7/5 Cumulative %
<b>Earliest</b>	6/22	82%
<b>Early 10%</b>	6/30	73%
<b>Early 25%</b>	7/2	64%
<b>Median</b>	7/5	52%
<b>Late 25%</b>	7/7	40%
<b>Late 10%</b>	7/10	30%
<b>Latest</b>	7/14	20%

[Return to Table of Contents](#)

## Sockeye Salmon Appendix

**Sockeye Salmon Table A1.** Cumulative CPUE from the BTF.

Date	2020	2019	2018	2017	2016	5-Yr Avg.	2008 - 2019 Avg.
<b>7/2</b>	387	816	623	810	615	764	802
<b>7/3</b>	450	874	696	917	699	860	892
<b>7/4</b>	502	1,020	905	982	781	987	980
<b>7/5</b>	<b>580</b>	<b>1,157</b>	<b>1,006</b>	<b>1,100</b>	<b>879</b>	<b>1,088</b>	<b>1,058</b>
<b>7/6</b>		1,396	1,055	1,308	932	1,208	1,142
<b>7/7</b>		1,530	1,193	1,363	1,142	1,347	1,226
<b>7/8</b>		1,582	1,270	1,593	1,206	1,443	1,283
<b>EOS</b>		2,685	2,275	2,690	2,463	2,454	1,839

**Sockeye Salmon Table A2.** Cumulative CPUE from the ATF.

Date	2020	2019	2018	2017	2016
<b>7/2</b>	72	22	52	135	69
<b>7/3</b>	78	22	60	145	77
<b>7/4</b>	83	22	60	196	110
<b>7/5</b>	<b>83</b>	<b>33</b>	<b>60</b>	<b>233</b>	<b>146</b>
<b>7/6</b>		33	60	268	171
<b>7/7</b>		33	60	268	248
<b>7/8</b>		33	68	286	248
<b>EOS</b>		33	75	393	405

**Sockeye Salmon Table A3.** Percent of run complete according to various historical run timing scenarios from the BTF.

Timing	Midpoint	7/5 Cumulative %
<b>Earliest</b>	6/21	99%
<b>Early 10%</b>	6/23	96%
<b>Early 25%</b>	6/26	90%
<b>Median</b>	6/28	80%
<b>Late 25%</b>	6/30	66%
<b>Late 10%</b>	7/6	52%
<b>Latest</b>	7/9	36%

[Return to Table of Contents](#)

**KUSKOKWIM RIVER SALMON MANAGEMENT WORKING GROUP (ATTENDANCE 2019-2020)**

Seat	Member	Letter Sent ?/ETC	2019 Meetings							2020 meetings					
			17-May	5-Jun	14-Jun	21-Jun	26-Jun	3-Jul	10-Jul	14-Aug	28-Aug	20-Nov	5-May	8-Jun	15-Jun
<b>DOWNRIVER ELDER</b>	<b>JAMES CHARLES</b>		P	X	X	X	P	X	X	P	X	P	P	P	P
	JOHN W. ANDREW		P	X	P	X	P	X	X	X	P	X	P	P	X
<b>UPRIVER ELDER</b>	<b>MISHKA ANDREANOFF</b>	Yes 7/19	<i>Vacant ?</i>	X	X	X	X	X	X	X	X	X	X	X	X
<b>LOWER RIVER SUBSISTENCE</b>	<b>MIKE WILLIAMS SR.</b>		P	P	P	EXC	P	P	X	P	X	P	P	P	X
	ALISSA ROGERS		P	P	P	P	P	P	P	P	P	P	P	P	X
	MARY PELTOLA		P	P	X	P	P	P	EXC	X	X	P	P	P	P
<b>MIDDLE RIVER SUBSISTENCE</b>	<b>MIKE SAVAGE</b>	Yes 7/19	X	X	X	X	X	X	X	X	X	X	X	X	X
	LISA FEYEREISEN		P	P	P	P	P	P	P	P	P	P	P	P	EXC
	DARREN DEACON	still has inter	X	X	X	X	X	X	X	X	X	X	X	X	X
<b>UPRIVER SUBSISTENCE</b>	<b>MARK LEARY</b>		X	P	EXC	X	P	X	X	X	EXC	P	X	EXC	EXC
	BARBARA CARLSON		P	P	EXC	P	P	P	P	P	EXC	EXC	P	EXC	P
<b>HEADWATERS</b>	<b>DANIEL ESAI</b>	Yes 7/19	P	X	P	X	X	X	P	X	X	X	X	X	X
<b>MEMBER AT LARGE</b>	<b>FRITZ CHARLES</b>		EXC	X	X	X	P	P	P	X	X	X	P	P	P
	CHARLES GUEST	No contact	X	X	X	X	X	X	X	X	X	P	X	X	X
	ALBERT KAWAGLEY		X	X	X	X	EXC	X	X	P	P	X	X	P	X
	BARBARA CARLSON		P	P	EXC	P	P	P	P	P	EXC	EXC	P	EXC	P
<b>WESTERN INTERIOR RAC</b>	<b>VACANT</b>						<i>Vacant</i>								
<b>YK DELTA RAC</b>	<b>BOB ALOYSIUS</b>	Send Letter?	P	P	P	X	X	X	EXC	X	X	X	X	X	X
	JOHN W. ANDREW		P	X	P	X	P	X	X	X	P	X	P	P	X
<b>PROCESSOR</b>	<b>VACANT</b>						<i>Vacant</i>								
<b>COMMERCIAL FISHING</b>	<b>CHARLIE BROWN</b>	No contact	P	X	X	X	X	X	X	X	X	P	X	X	X
	GREG HOFFMAN, JR.		P	P	X	P	P	P	X	P	P	X	P	X	EXC
<b>SPORT FISHING</b>	<b>LAMONT ALBERTSON</b>		P	P	P	EXC	P	P	P	P	P	P	P	P	P
<b>KRITFC</b>	<b>Robert Lekander (RES)</b>						<i>Vacant</i>								<i>Vacant</i>
	James Nicori	Yes 7/19	X	X	X	X	X	X	X	X	X	X	X	X	X

P = Present

X = Absent

EXC = Excused Absence

Voting Members or Alternates Highlighted in Gray with a Bold Outline are those suggested for discussion



BY-LAWS OF THE  
KUSKOKWIM RIVER SALMON MANAGEMENT WORKING GROUP

---

**PURPOSE**

To provide local fishers and other users with an avenue for direct involvement in the management of their fishery. The goal is for all parties to work together to reach a consensus on management of the fishery. Final emergency order authority continues to rest with the Alaska Department of Fish and Game.

**RULES OF CONDUCT**

Meetings will be conducted by Robert's Rules of Order. The sequence of meetings is as follows:

- I. Call to order (by chair)
- II. Roll Call (by chair)
- III. Invocation
- IV. Meeting Minutes
- V. Approval of Agenda: *Optional*
- VI. People to be heard
- VII. Continuing Business
  1. Subsistence Reports/Traditional Native Fisheries Knowledge
    - a. Lower River:
    - b. ONC Inseason Subsistence:
    - c. Middle River Subsistence:
    - d. Upper River:
    - e. Headwaters:
  2. Overview of Kuskokwim River Salmon Run Assessment Projects
    - a. Test Fish (Bethel and Aniak)
    - b. Weir/Mark-Recapture/Aerial Surveys/Other:
  3. Commercial Catch Report:
  4. Processor Report:
  5. Sport Fish Report:
  6. Intercept Fishery Report: *Optional*
  7. Weather Forecast:
  8. Recommendation:
- VIII. Old Business
- IX. New Business
- X. Meeting Action Announcement
- XI. Date, Time, and Place of next meeting
- XII. Adjournment

(This sequence may be changed at the discretion of the Group)

People to Be Heard and Continuing Business reports may not exceed 3 minutes in length, excluding questions and answers.

Under the 'People to be heard' agenda item the public would be provided an opportunity to discuss only topics or items which are **not** already listed as specific agenda items. A member of the public may also ask the Group to place an issue on the agenda.

Unlike other institutions or committees, the Working Group operates on a consensus basis. When discussing fisheries management issues, a simple majority vote of the members is not sufficient to pass a motion. For the purposes of the Group all fisheries management related motions must pass by a consensus of the members present at the meeting. If 7 (seven) or fewer of the members are present, then consensus is defined as a situation wherein either all voting members vote "yea" or all voting members vote "yea" except for one "nay" vote. If 8 (eight) or more of the members are present, then consensus is defined as a situation wherein either all voting members vote "yea" or all voting members vote "yea" except for two "nay" votes.

The Alaska Department of Fish and Game does not have voting status on motions concerning the setting of commercial openings.

When voting on motions not related to fisheries management or seat elections, a consensus vote is not required.

## **ARTICLE I, OFFICE**

The principal office of the Kuskokwim River Salmon Management Working Group (Working Group) shall be located in the City of Bethel, Alaska 99559.

The current address of the principal office is, P.O. Box 1467, Bethel, Alaska 99559. The physical address is 570 4<sup>th</sup> Avenue.

## **ARTICLE II, MEMBERS**

**Section 1. Members:** The Kuskokwim River Salmon Management Working Group shall have 14 member organizations or constituencies. These members represent: Elders (Upriver, Downriver) (2), Subsistence Fishermen (Lower River, Middle River, Upriver, and Headwaters) (4), Processors (1), Commercial Fishermen (1), Sport Fishers (1), Member at Large (1), Federal Subsistence Regional Advisory Committees (Yukon-Kuskokwim Delta, Western Interior) (2), Kuskokwim River Inter-Tribal Fish Commission (1) and the Department of Fish and Game (1). Each member of the Working Group will designate a representative and an alternate or alternates in the event the representative is unable to attend a meeting. In the case where more than one person is nominated to represent a member organization or constituency, the Working Group will appoint one of the nominees to represent the member organization or constituency.

### **Section 2. Annual Meeting:**

An annual meeting of the Kuskokwim River Salmon Management Working Group may be held in Bethel or Anchorage during the month of March to coincide with the Kuskokwim Salmon Interagency Meeting. The purpose of the meeting will be to conduct any

unfinished administrative functions that the Working Group needs to complete for the following year.

**Section 3. Special Meetings:**

Special meetings of the Kuskokwim River Salmon Management Working Group may be called by the Co-Chairs.

**Section 4. Notice of Meetings:**

The Department of Fish and Game will be responsible for informing the Kuskokwim River Salmon Management Working Group members of the time, place and date of any meetings. Notification of meetings to the Working Group will be not less than 48 hours (when possible) or more than 45 days in advance.

**Section 5. Quorum:**

In order for a meeting of the Working Group to be held and for actions taken at a meeting to be legitimate, it is necessary for there to be a quorum at a meeting, that is at least 7 of the 14 member constituencies must be represented.

For Fisheries management meetings, there must be 7 members plus the department representative.

For executive sessions, the quorum may be 7 members including the department representative; however, this meeting cannot entertain motions regarding fishery decisions.

If a quorum of the full committee is not present, business may be conducted in executive session. The executive committee is composed of at least 5 representatives: one Co-Chair, any two representatives of the following member groups; Member at Large, Processors, Commercial Fisherman, Kuskokwim River Inter-Tribal Fish Commission and any two representatives of the following member groups; Lower, Middle, Upriver and Headwaters Subsistence, Federal RAC, Sport Fisher.

**Section 6. Quorum:**

During the regular meeting season (May – August), all materials that will be disseminated on behalf of the Working Group shall be added to and voted upon as a new business agenda topic. A special meeting (Article II; Section 3) of all working group members shall be scheduled to discuss and vote upon all material that will be disseminated on behalf of the Working group during the non-meeting season (Sept – April).

**ARTICLE III. REPRESENTATIVES**

**Section 1. Working Group:**

The Kuskokwim River Salmon Management Working Group shall be comprised of 14 representatives from the areas described in Article II, Section 1.

**Section 2. General Powers:**

The Kuskokwim River Salmon Management Working Group shall make recommendations

to the Department of Fish and Game for the purposes of managing the salmon fisheries on the Kuskokwim River after subsistence and commercial catch, test fishery, weir, tower and sonar reports and other information are provided to the group.

**Section 3. Voting Membership:**

Each Working Group member shall be entitled to one vote. One alternate designated by the member shall be entitled to one vote in the absence of that member. Members may abstain from voting on any motion. The Department of Fish and Game may vote on motions unrelated to fisheries management decisions only.

Working Group members must hear all the Continuing Business reports to vote on a motion to set commercial openings.

**Section 4. Resignation:**

Any member or representative may resign by submitting a letter of resignation to a Co-Chair of the Working Group. The resignation must give the Working Group at least 4 weeks notification so that a new member or representative may be appointed.

**Section 5. Vacancies:**

A vacancy on the Kuskokwim River Salmon Management Working Group because of death, resignation, removal, disqualification, forfeiture or otherwise, may be filled by the Working Group from nominations by member groups for the remainder of the term.

**Section 6. Forfeit, participation, or removal:**

- A. FORFEIT. The Working Group will give written notification, by certified mail, to any member organization, their representative and alternate whose seat has not been represented for 2 consecutive meetings that their membership in the Working Group will be forfeited if the seat is not represented by the following meeting. Whereas, a member's failure to be represented at a meeting is excused by the Working Group, as appropriate, such failure shall not be considered an absence within this section.
- B. PARTICIPATION. No representative will be allowed to participate in a Working Group meeting who is deemed to be under the influence of alcohol and/or drugs.
- C. REMOVAL. A representative may be removed from their seat on the Working Group for cause and must be provided the opportunity appeal this removal at a subsequent meeting of the Working Group. A representative may be removed for cause for any reason allowed, including but not limited to, conviction of a felony, gross misconduct, violation of their trust to the Working Group as a representative, or harassment of any kind to the other representatives of the Working Group.

**ARTICLE IV. OFFICERS OF THE WORKING GROUP**

**Section 1. Officers:**

The Kuskokwim River Salmon Management Working Group shall elect Co-Chairs for the purpose of conducting meetings. The Co-Chairs will be elected annually at the first

*Amended 05/6/2020*

meeting occurring after March 1<sup>st</sup>. The Working Group shall elect or appoint other officers as deemed necessary. An officer of the Working Group may not hold more than one position. The Co-Chairs must be official representatives of the Working Group.

**Section 2. Terms of Office:**

Each representative of the Working Group shall be elected or appointed. A representative shall hold their position until their successor has been duly elected or appointed and has been qualified

**Section 3. Co-Chair:**

A Co-Chair of the Kuskokwim River Salmon Management Working Group shall preside at all meetings of the Working Group. If a pre-designated co-chair is not present, those present may elect a temporary chair to preside for that meeting.

**Section 4. Other Committees:**

The Co-Chairs shall have the authority to appoint representatives to serve on committees as deemed necessary. Any representative appointed to a committee may be removed in the best interest of the Kuskokwim River Salmon Management Working Group.

**ARTICLE V. DEFINITIONS**

- 1. Member.** The member organizations or constituencies of the Working Group as listed in Article II, Section 1.
- 2. Alternate.** An individual designated to act in the place of a member or representative unable to attend a meeting.
- 3. Representative.** Person designated by a Working Group member organization or constituency to represent that member organization or constituency at Working Group meetings.
- 4. District W-1.** The Lower Kuskokwim River consists of the Kuskokwim River from a line between Apokak Slough and Popokamiut, upstream to a line between ADF&G regulatory markers located about eight miles above the Tuluksak River.
- 5. District W-2.** The middle Kuskokwim River consists of the Kuskokwim River from ADF&G regulatory markers located at the upstream entrance to the second slough on the west bank downstream from Kalskag to the regulatory markers at Chuathbaluk.
- 6. Elder.** Any respected Elder that resides within the Kuskokwim Area.
- 7. Headwaters Subsistence.** Representatives that are active subsistence users in the Kuskokwim River drainage from McGrath upstream to the headwaters of the Kuskokwim River.

- 8. Upriver Subsistence.** Representatives that are active subsistence users in the Kuskokwim River drainage above Chuathbaluk and below McGrath.
- 9. Middle River Subsistence.** Representatives that are active subsistence users in the Kuskokwim River drainage from Lower Kalskag to Chuathbaluk within District W-2.
- 10. Lower River Subsistence.** Representatives that are active subsistence users in the Kuskokwim River drainage from Eek to Tuluksak within District W-1. Appendix A1.– Page 7 of 8.
- 11. Processor.** Representatives that own or operate commercial salmon buying and/or processing businesses within District W-1 and W-2.
- 12. Member at Large.** Representatives that are Area residents selected by the Working Group for their knowledge of, appreciation for, and experience with Kuskokwim River fisheries.
- 13. Federal Regional Advisory Council.** Representatives that are current members of the Yukon-Kuskokwim Delta and Western Interior Advisory Councils and reside in the Kuskokwim Area.
- 14. Commercial Fishermen.** Kuskokwim commercial fishing permit holder or crew member, supported by commercial fishing permit holders who fish primarily within Districts W-1 and W-2.
- 15. Sport Fisher.** Representatives that actively participate in sports fishing within the Kuskokwim River drainage.
- 16. Kuskokwim River Inter-Tribal Fish Commission.** Representatives who are current members of the Kuskokwim River Inter-Tribal Fish Commission and reside in the Kuskokwim Area.
- 17. Alaska Department of Fish and Game.** Representatives that are presently employed with ADF&G in Bethel. This position is an associate member and may only vote on decisions not directly related to fisheries management. Final emergency order authority continues to rest with the ADF&G.

## **ARTICLE VI. AMENDMENT TO BY-LAWS**

These by-laws may be altered, amended or repealed and new by-laws may be adopted by consensus of the Kuskokwim River Salmon Management Working Group representatives present at any regular or special meeting, if at least thirty (30) days written notice is given by certified mail, phone call, or intention to alter, amend or appeal or to adopt new by-laws at such meeting.