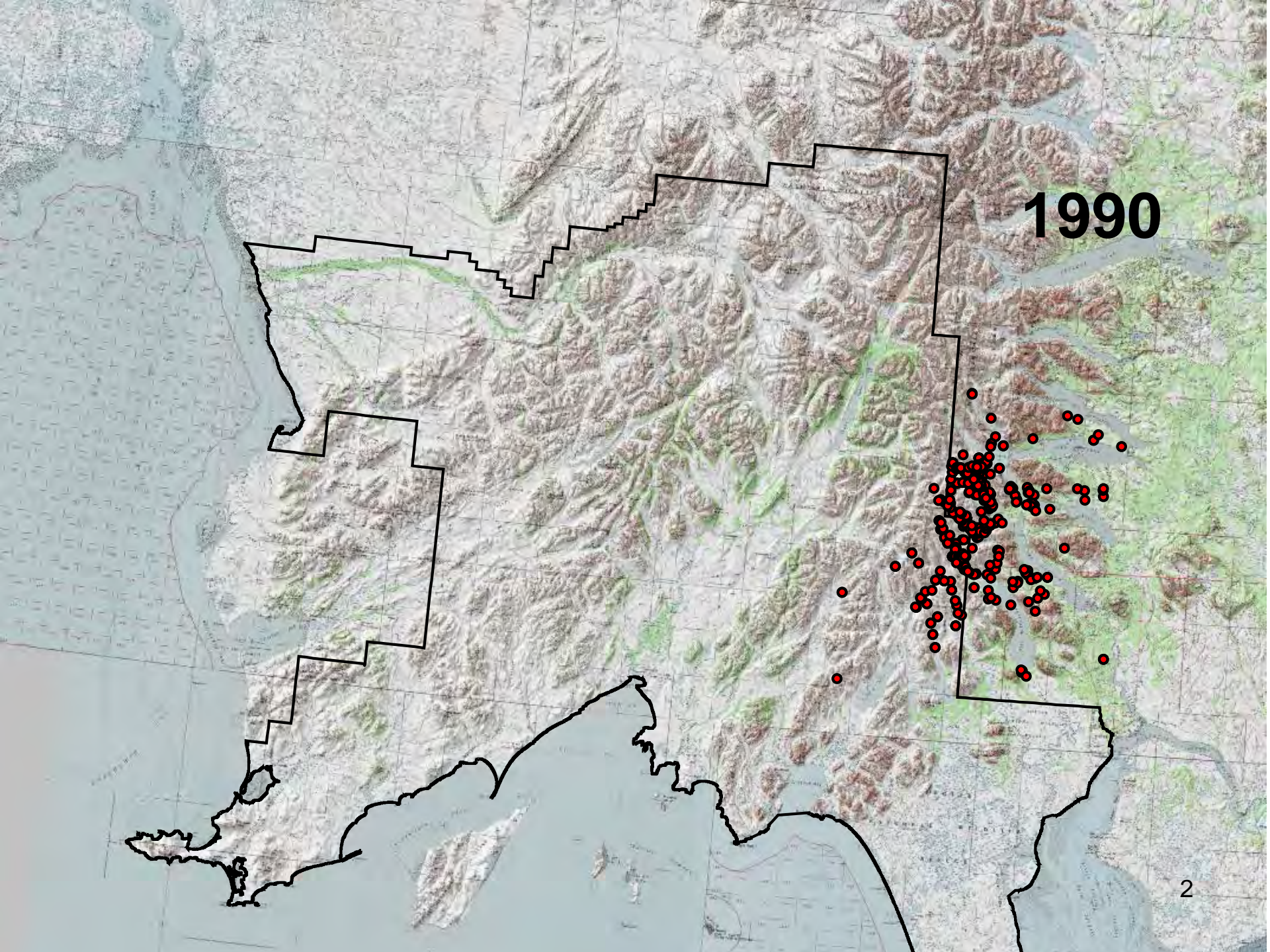




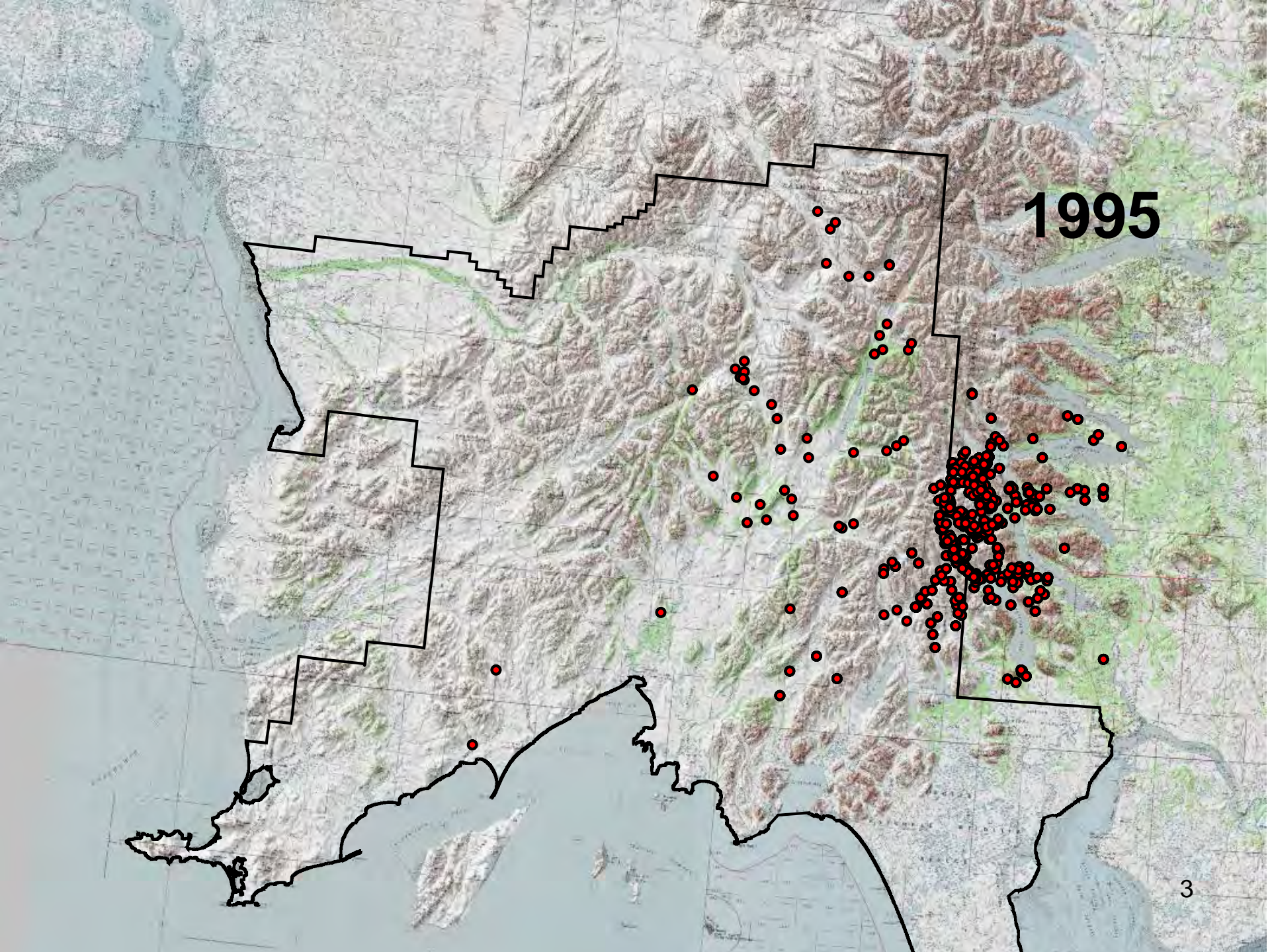
Management Planning Efforts for Moose in GMU17A

(Plan affects Proposal 48)

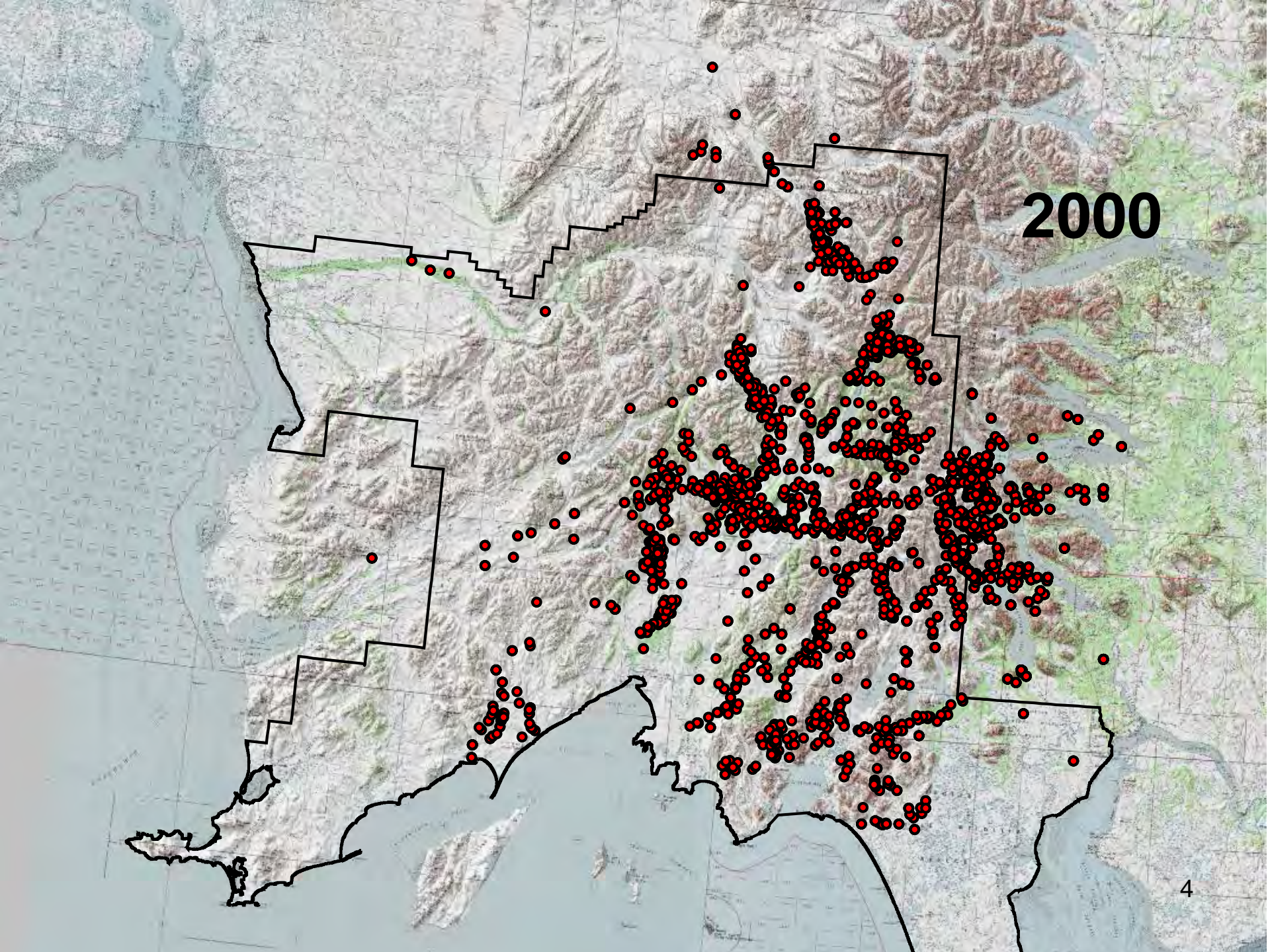




1990

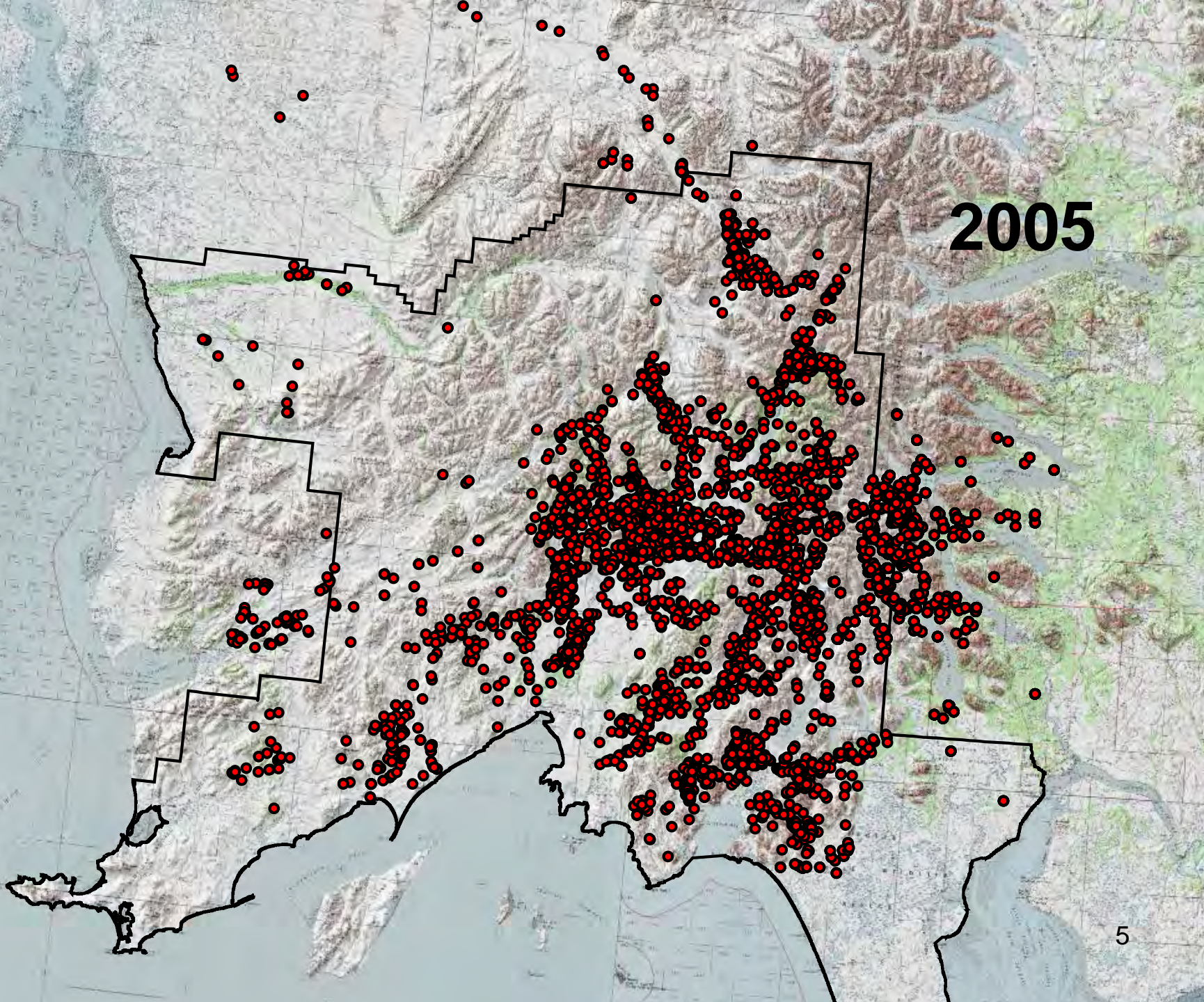


1995

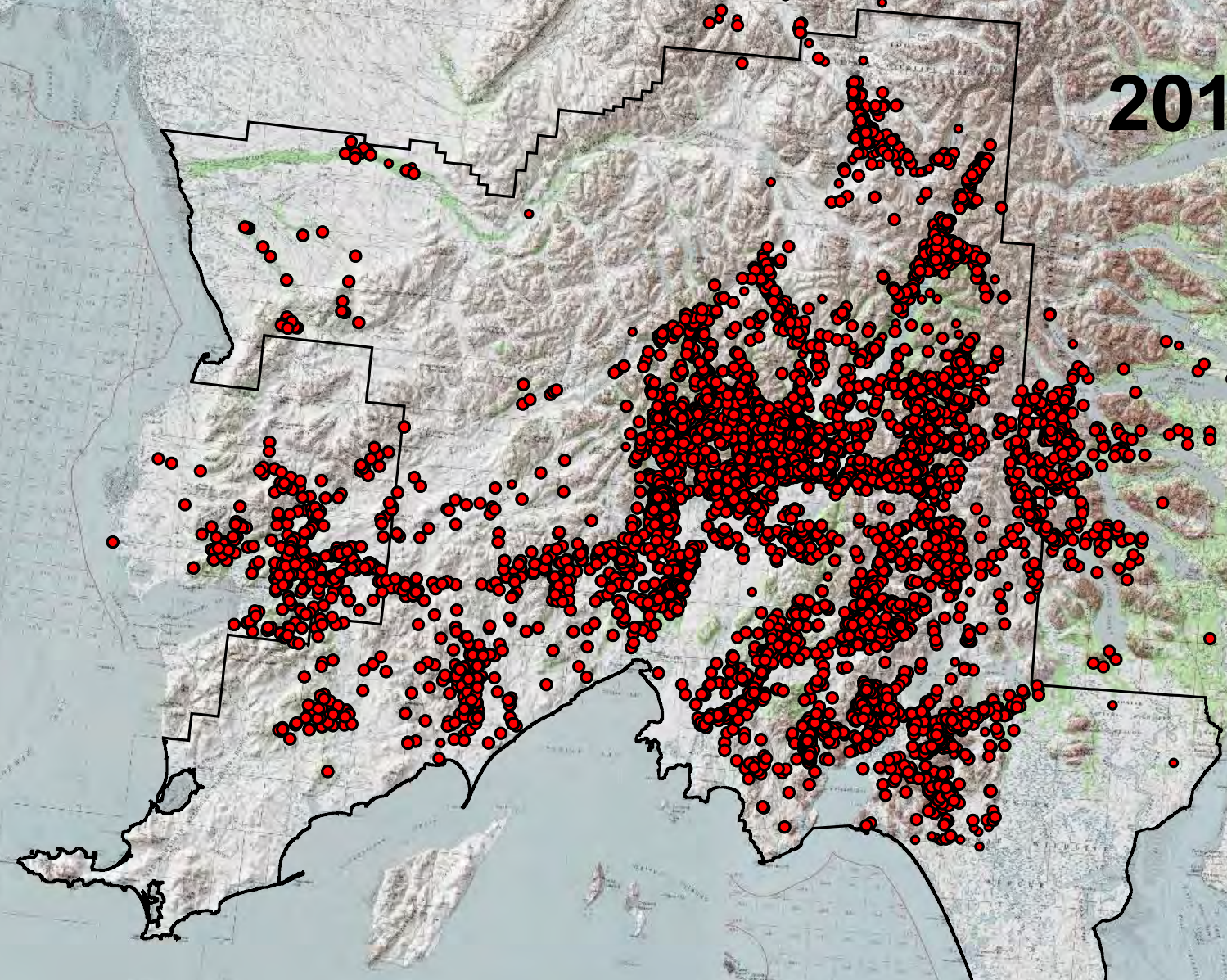


2000

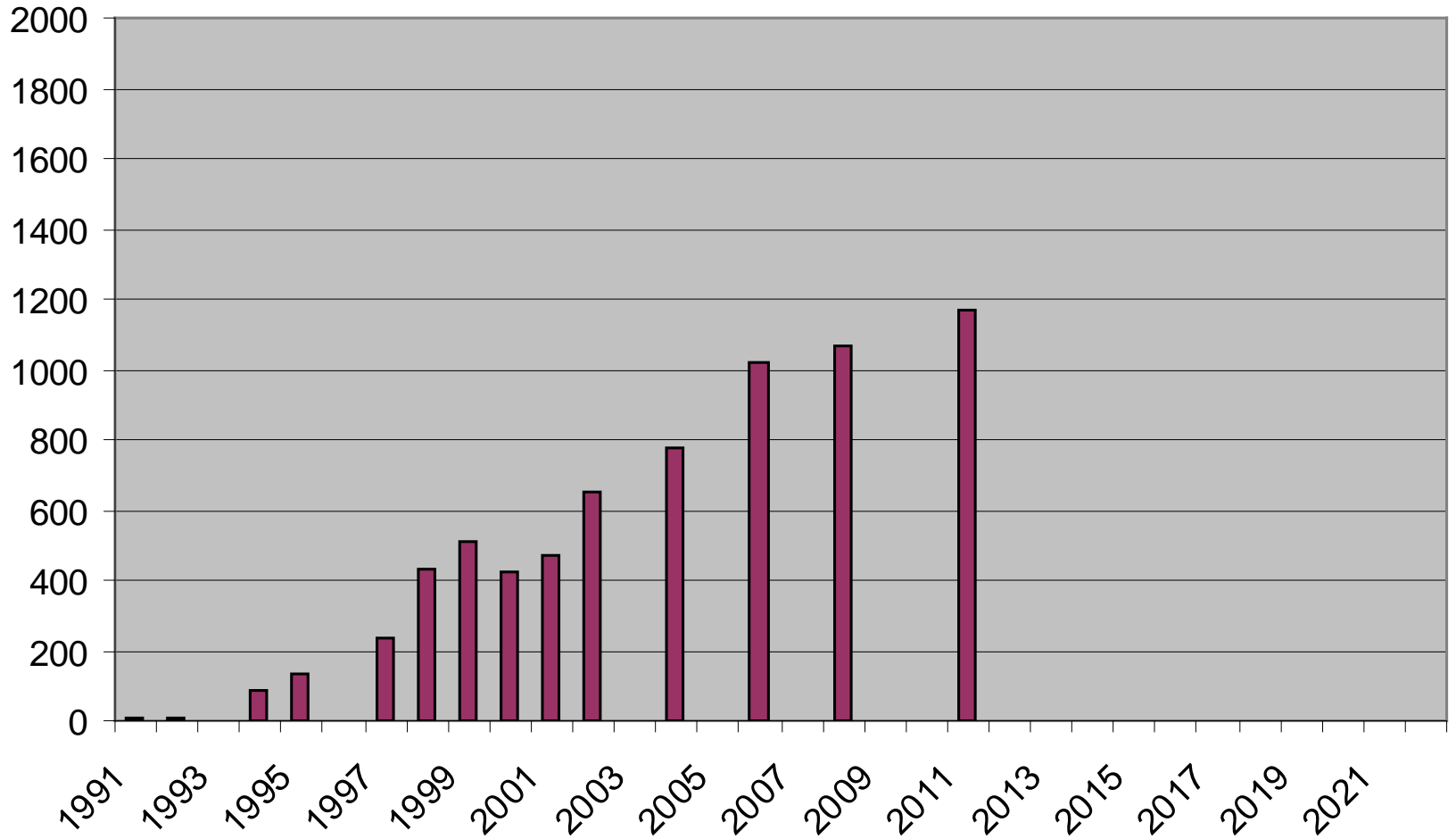
2005



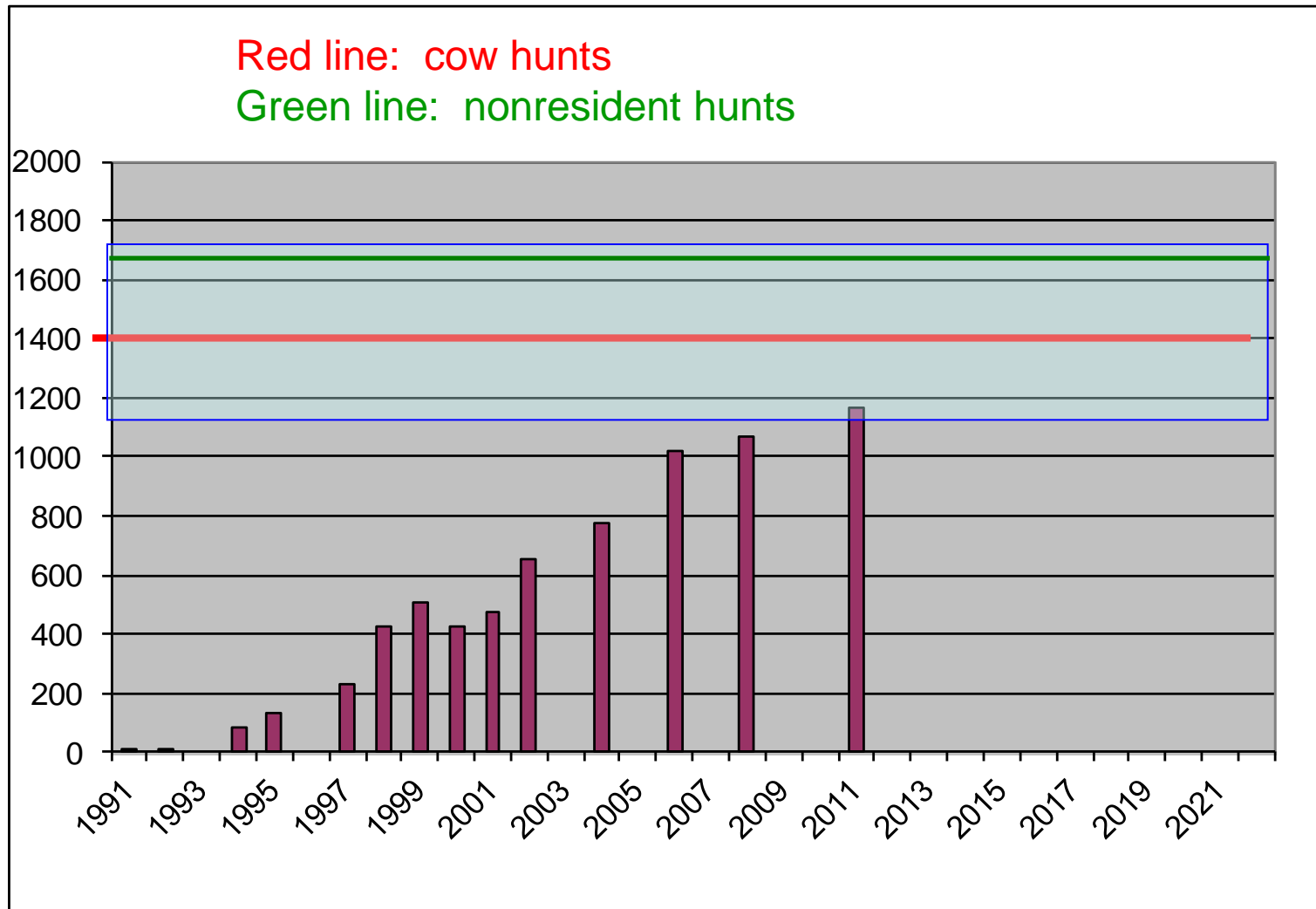
2012



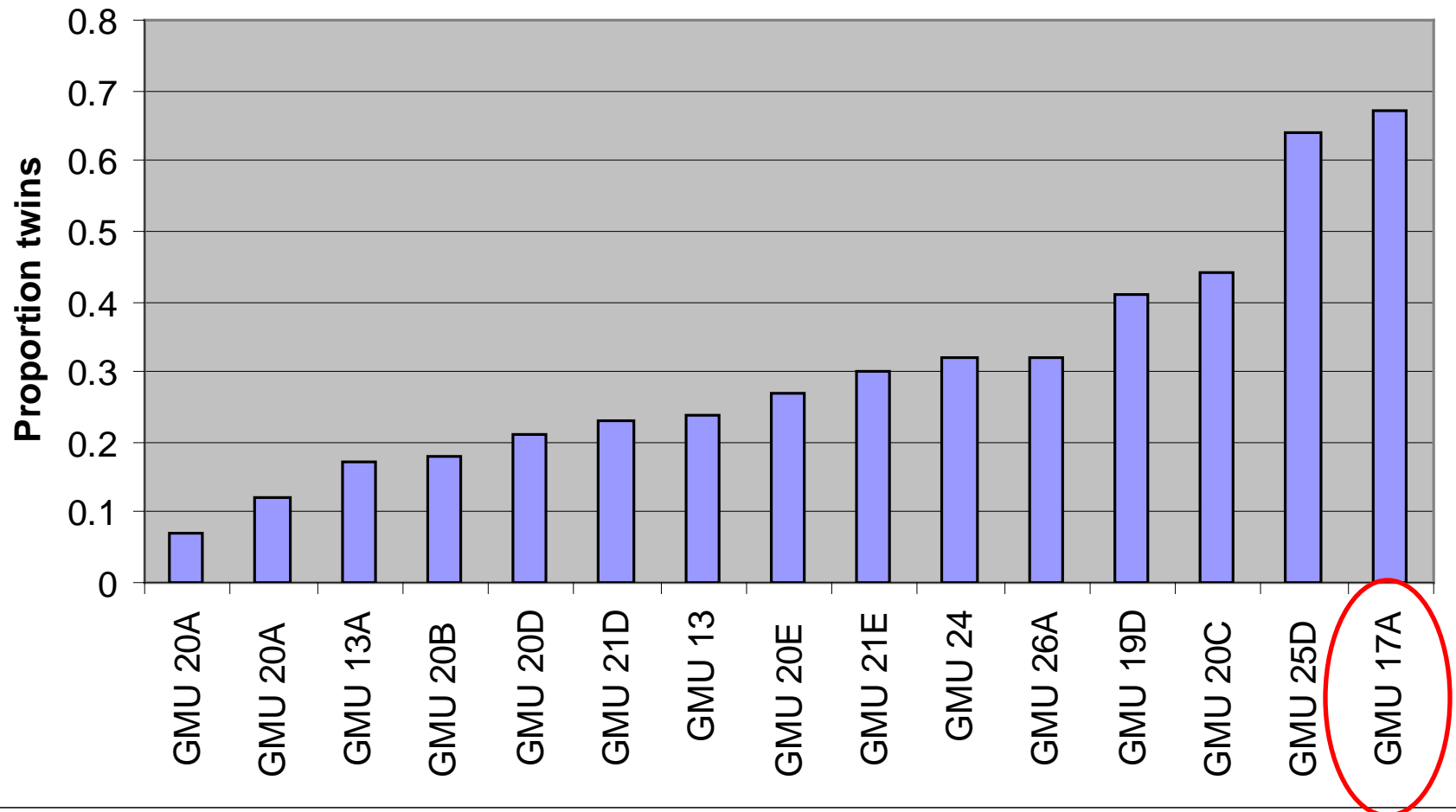
GMU17A moose population growth



2004 Plan Thresholds and Objectives



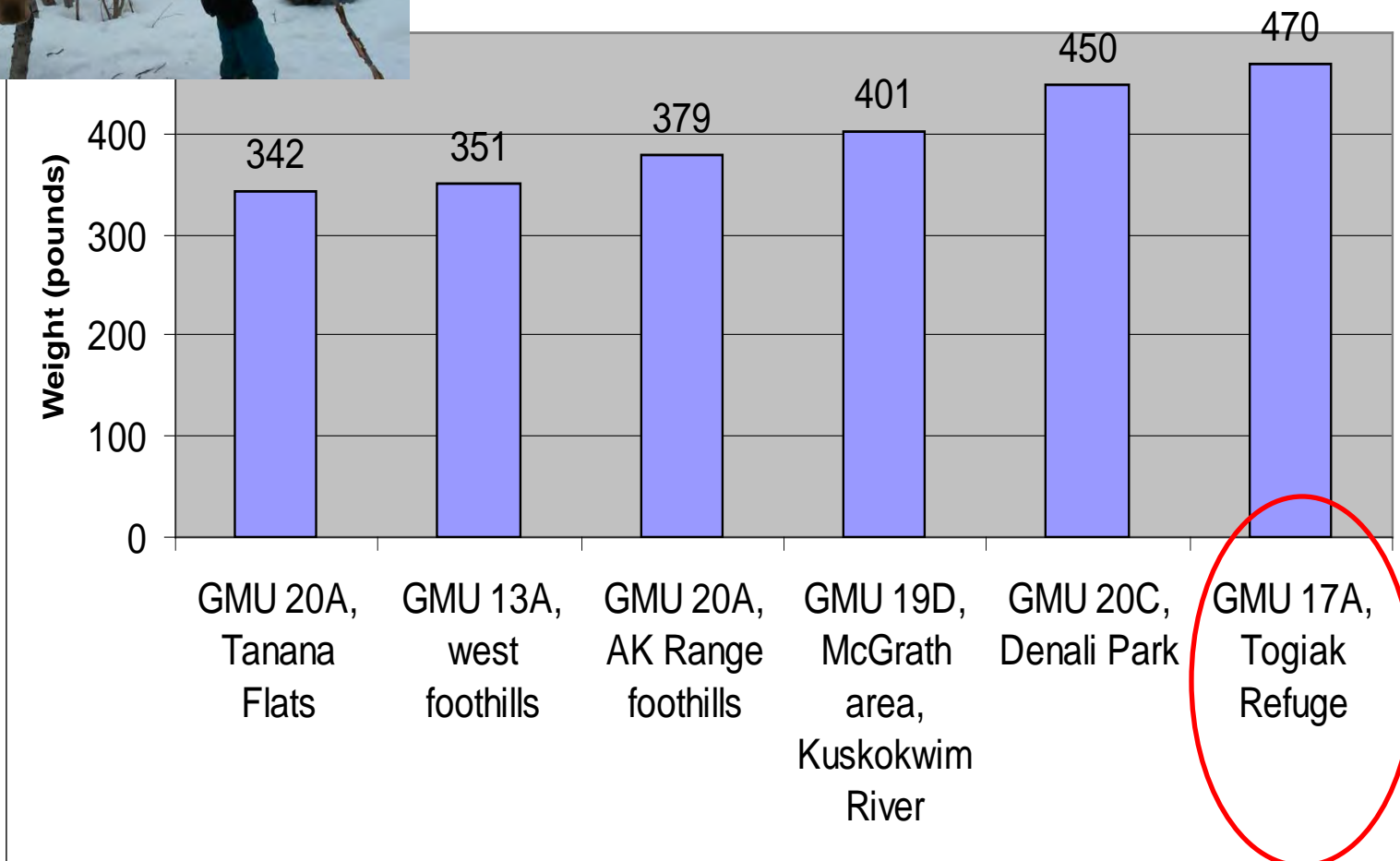
Proportion of cows having twins



From Boertje, R. and others. 2007. Ranking Alaska moose nutrition: signals to begin liberal antlerless harvests. *Journal of Wildlife Management* 71:1494-1506.



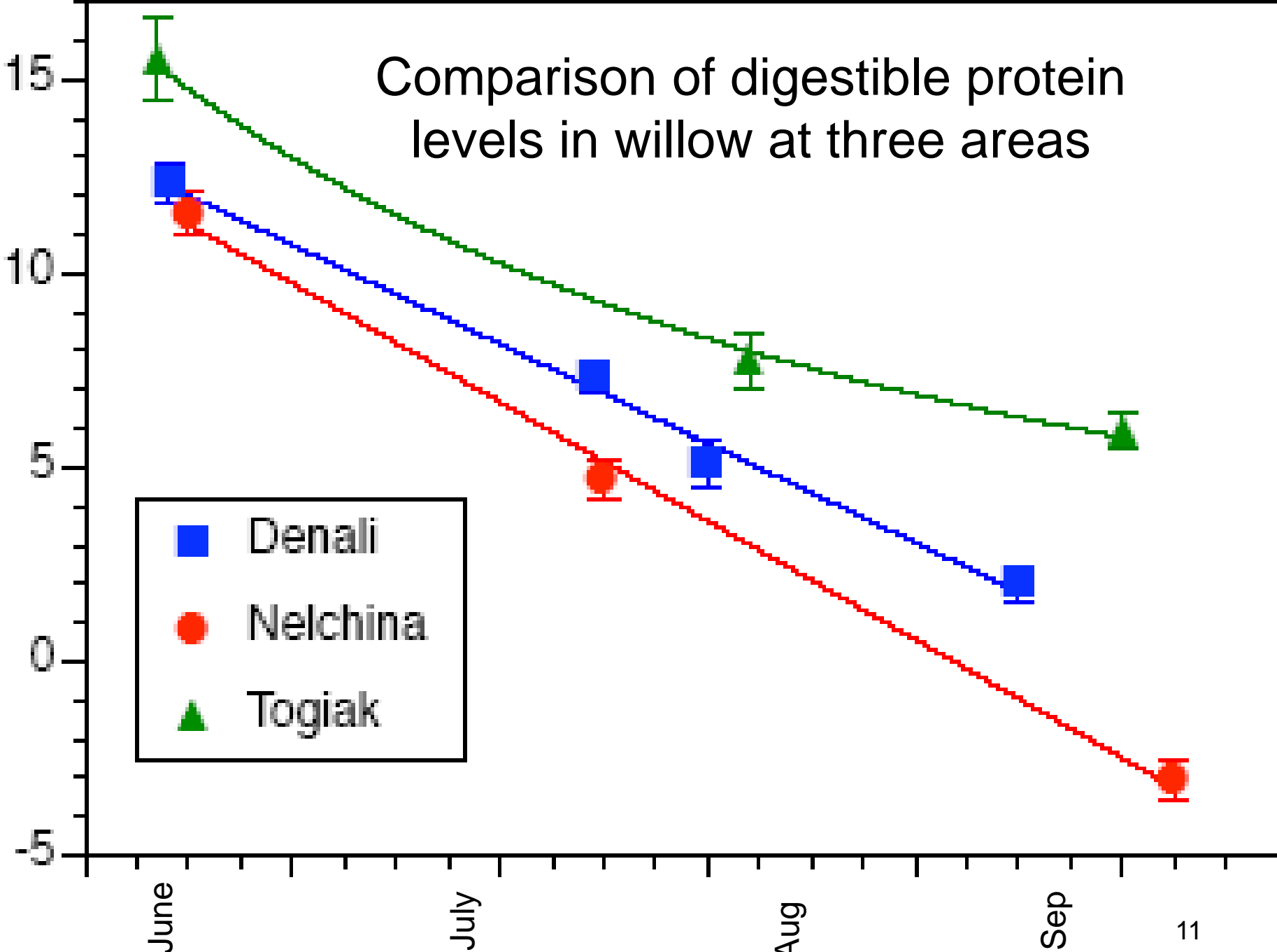
Ten month old calf weight



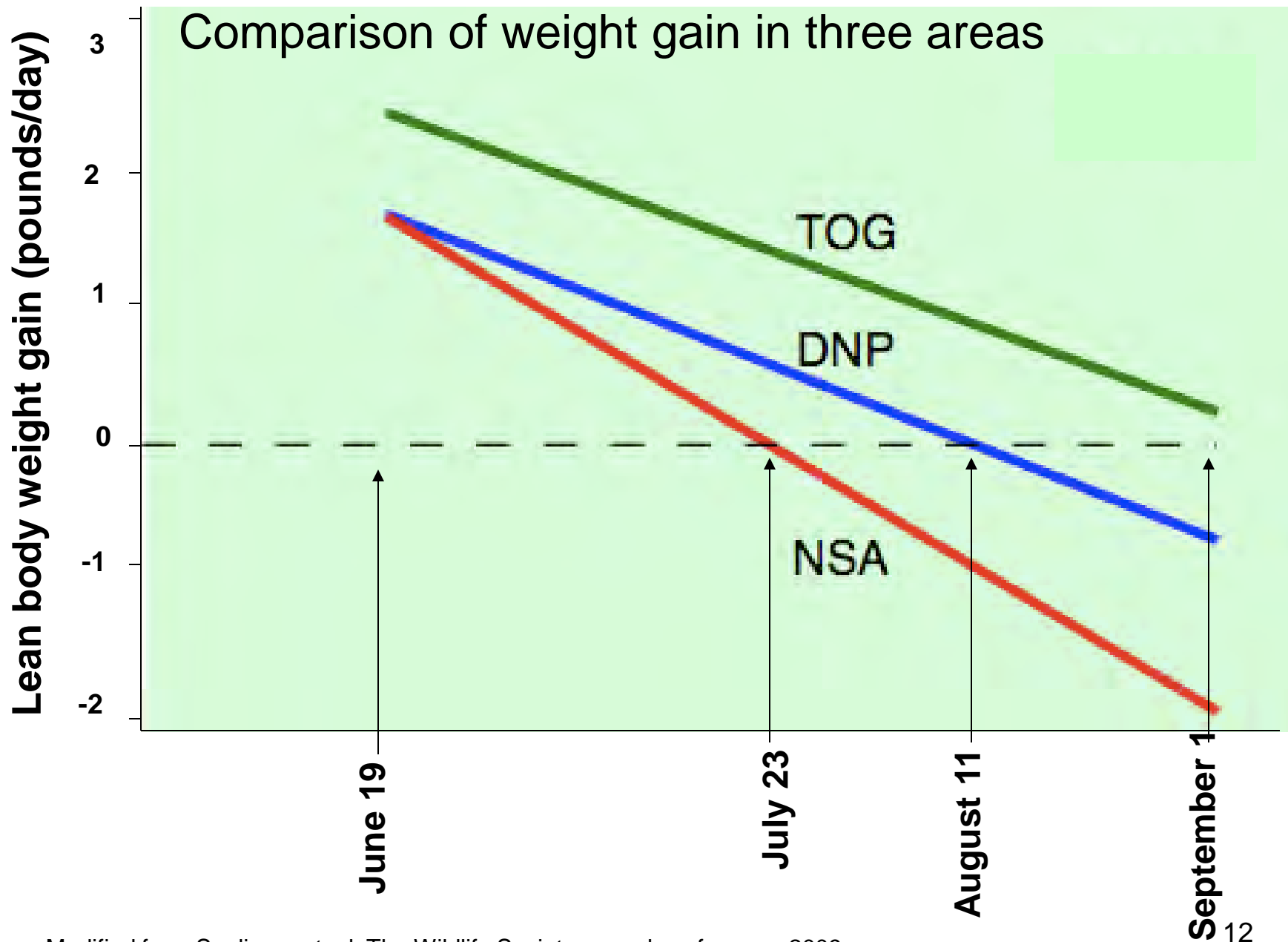
From Boertje, R. and others. 2007. Ranking Alaska moose nutrition: signals to begin liberal antlerless harvests. *Journal of Wildlife Management* 71:1494-1506.

Comparison of digestible protein levels in willow at three areas

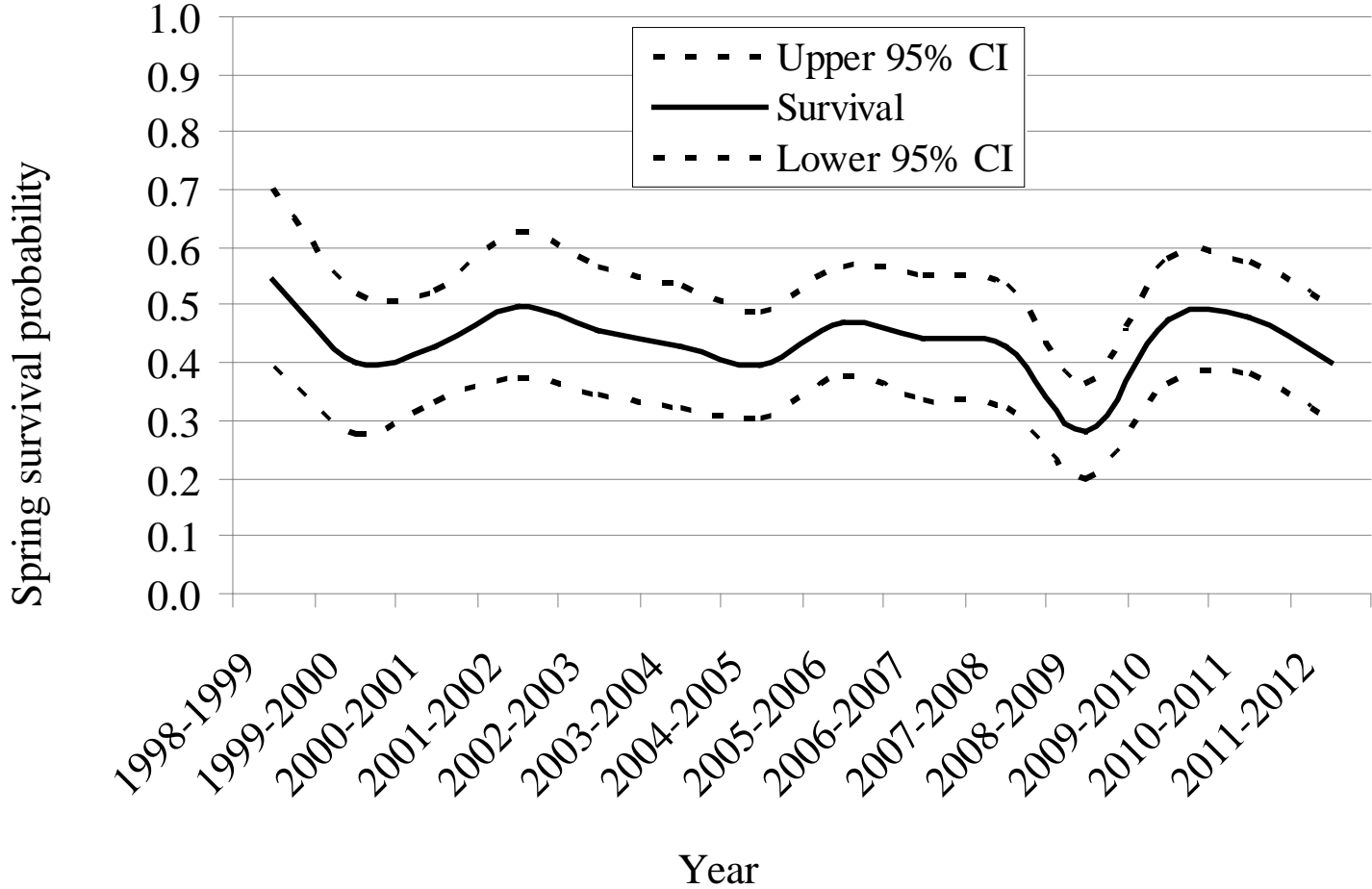
Digestible Protein (% of DM)



Data courtesy Bill Collins, Alaska Department of Fish and Game

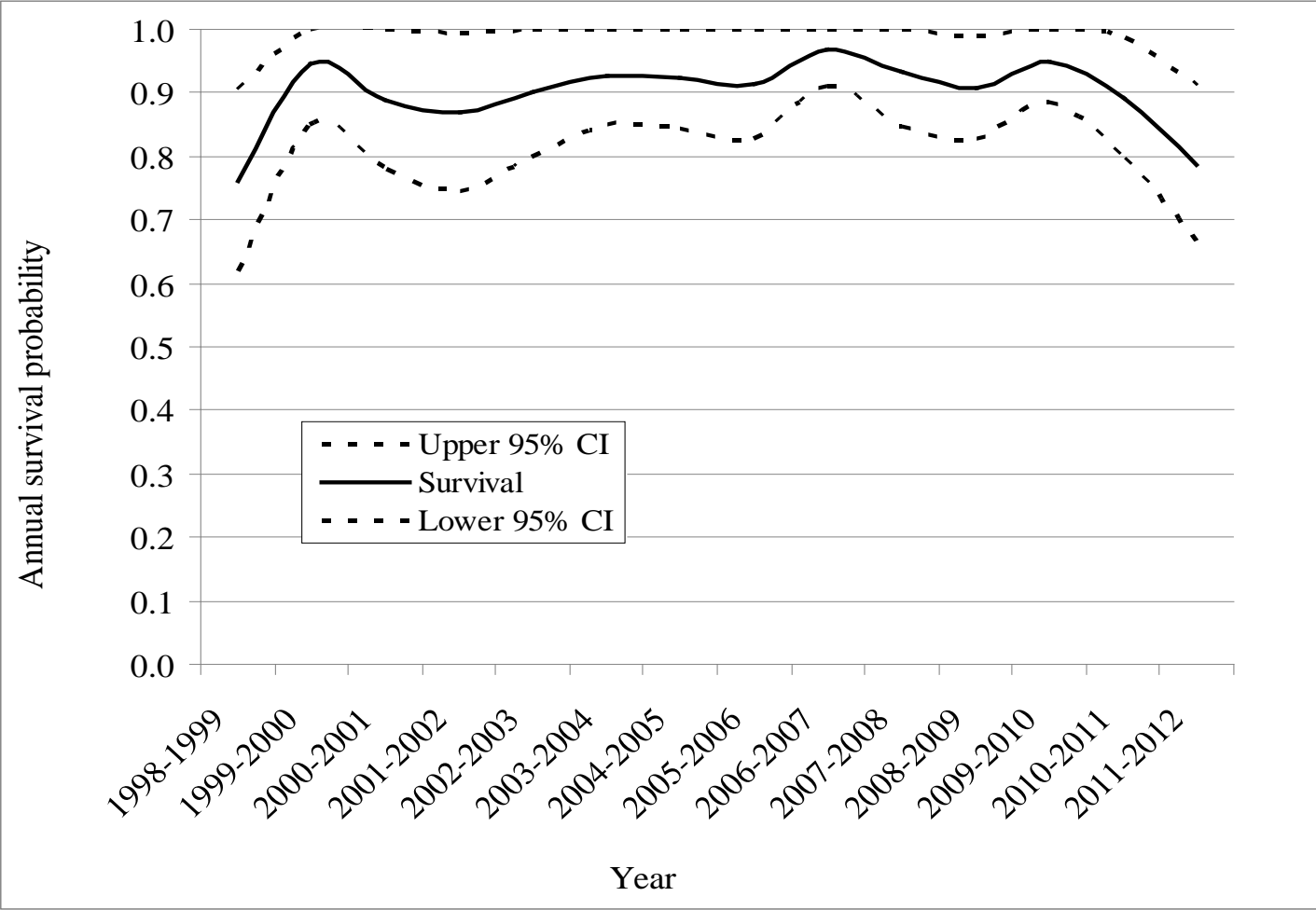


Calf survival until Spring



Average survival: 44%

Cow survival



Average survival: 90%



Habitat:

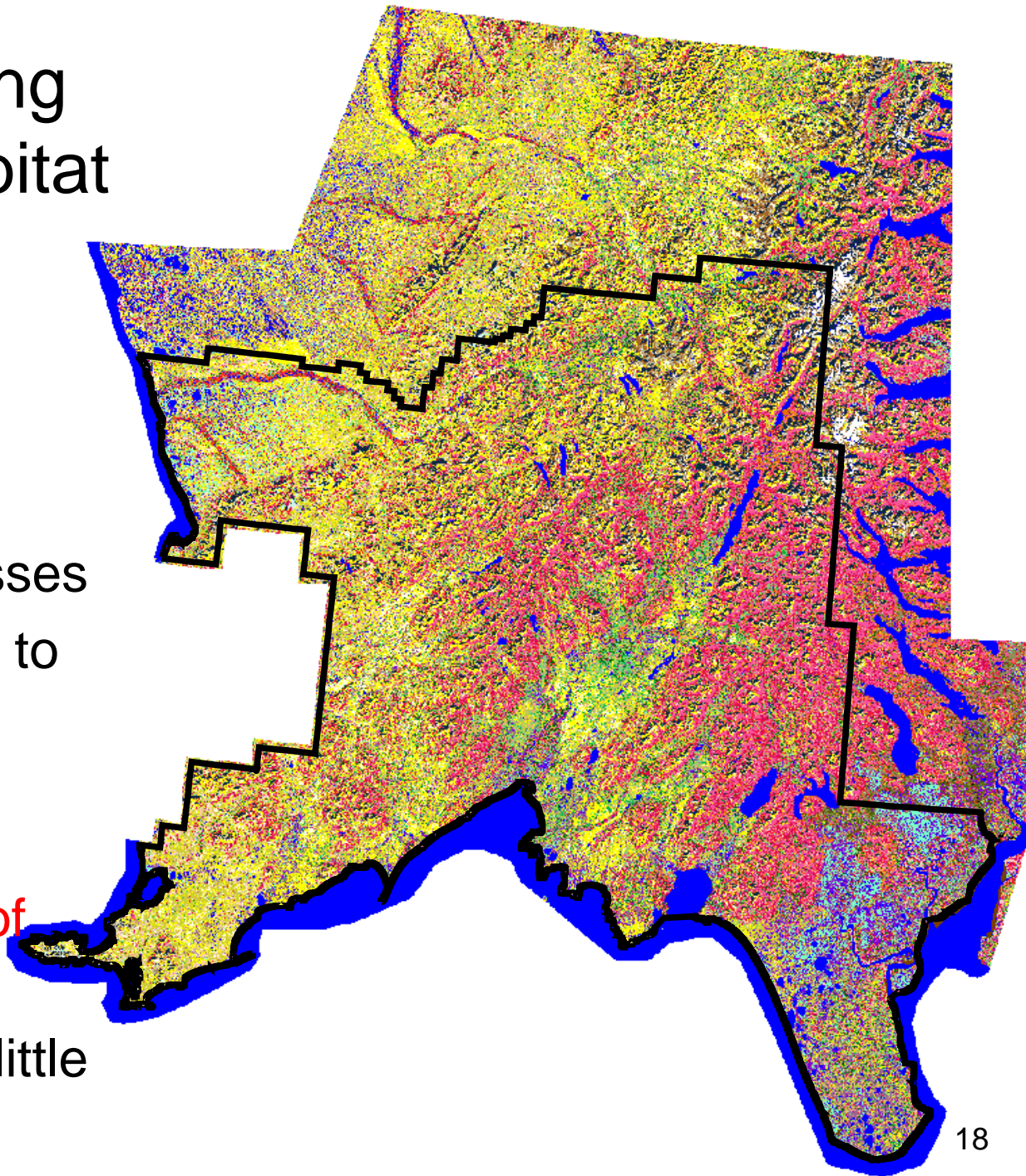
**much of Unit 17A is low
quality moose habitat**





Quantifying moose habitat

- Landcover map created in 2003
- 32 landcover classes
- 11 classes useful to moose as winter habitat
- Winter habitat constitutes 13% of GMU 17A
- 87% of area has little value for moose

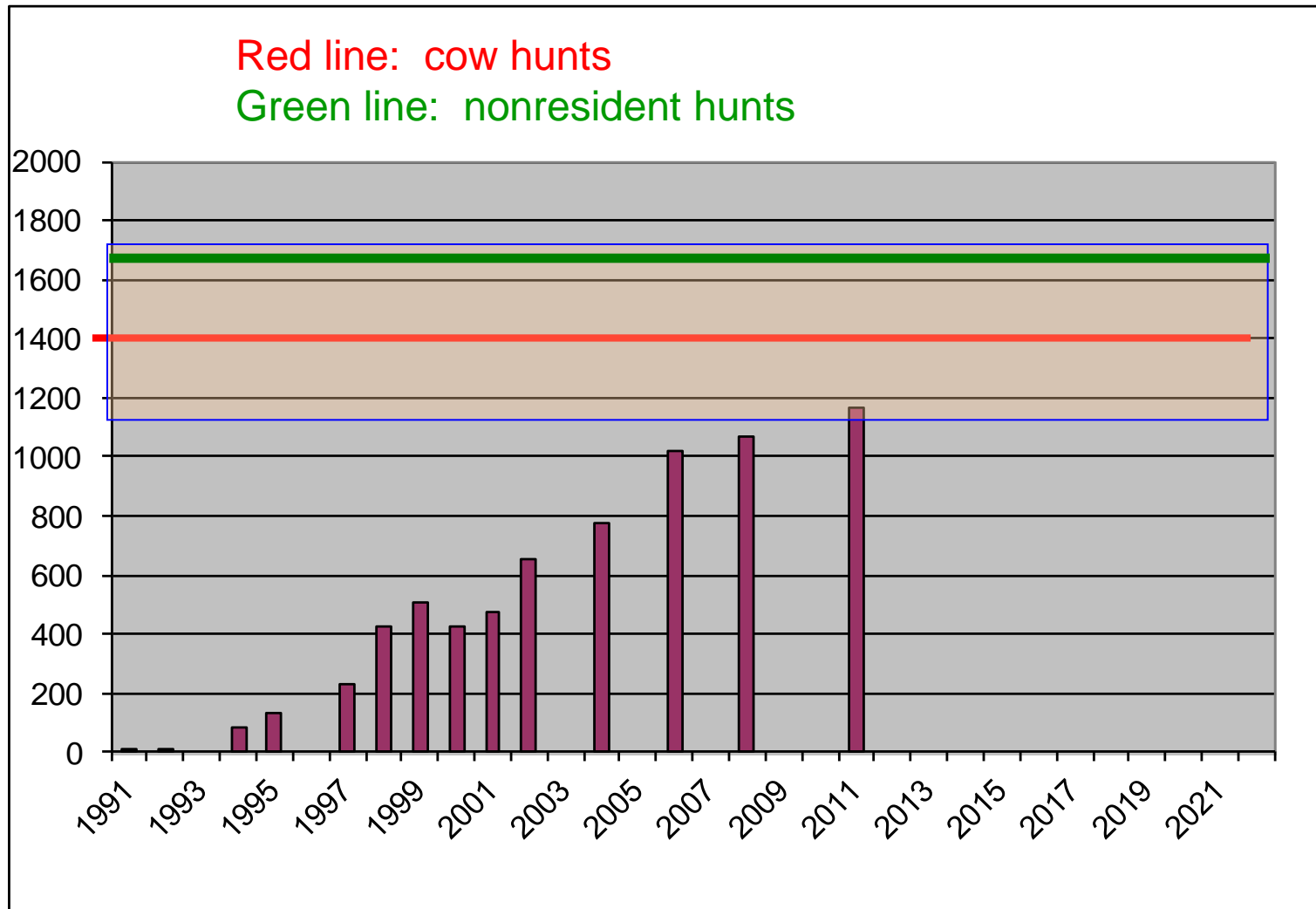


Population Objectives 1998 vs 2011

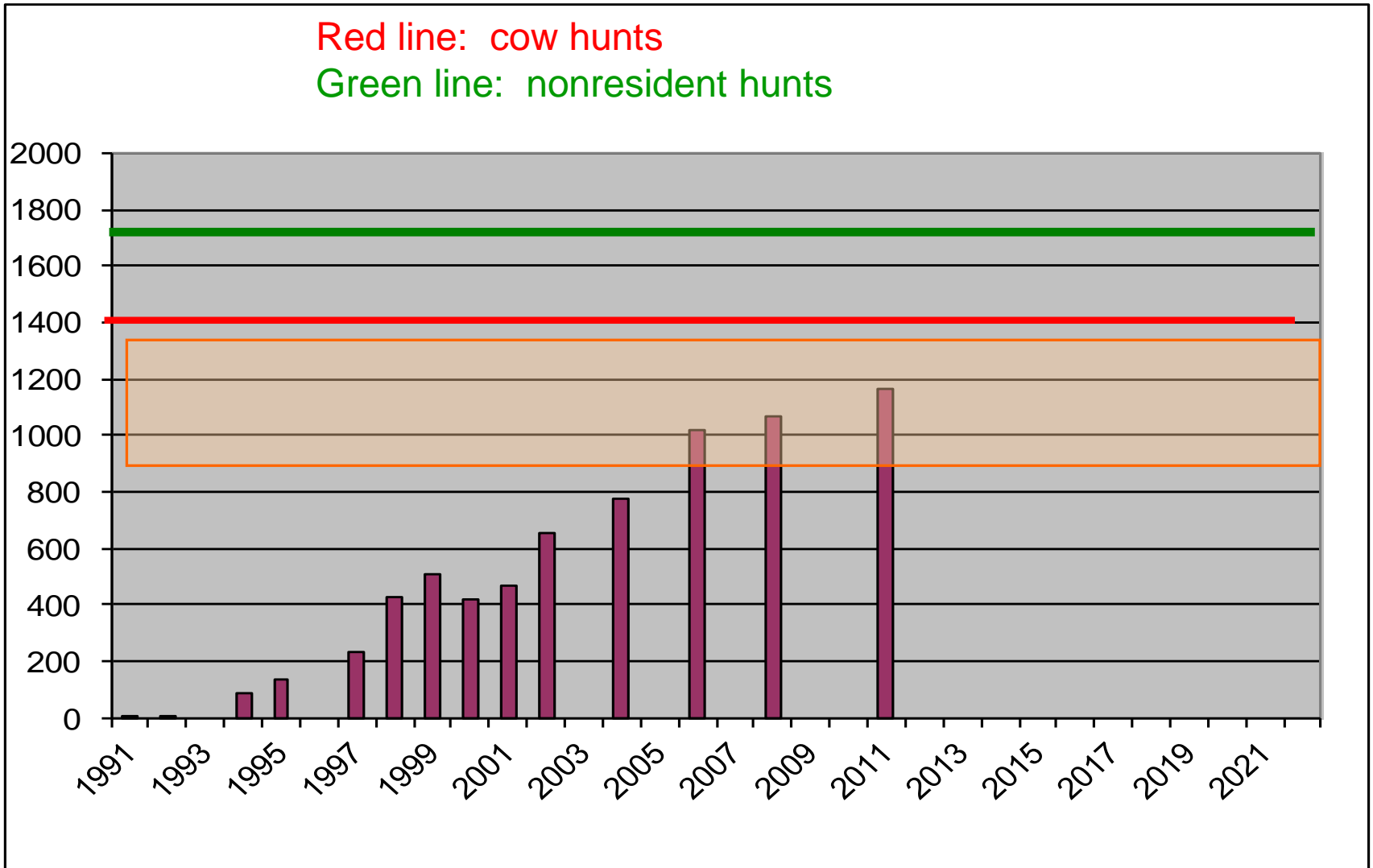
Density and Population Size

Year	Miles ²	2 moose/mi ²	3 moose/mi ²
1998	560	1120	1680
2011	450	900	1350

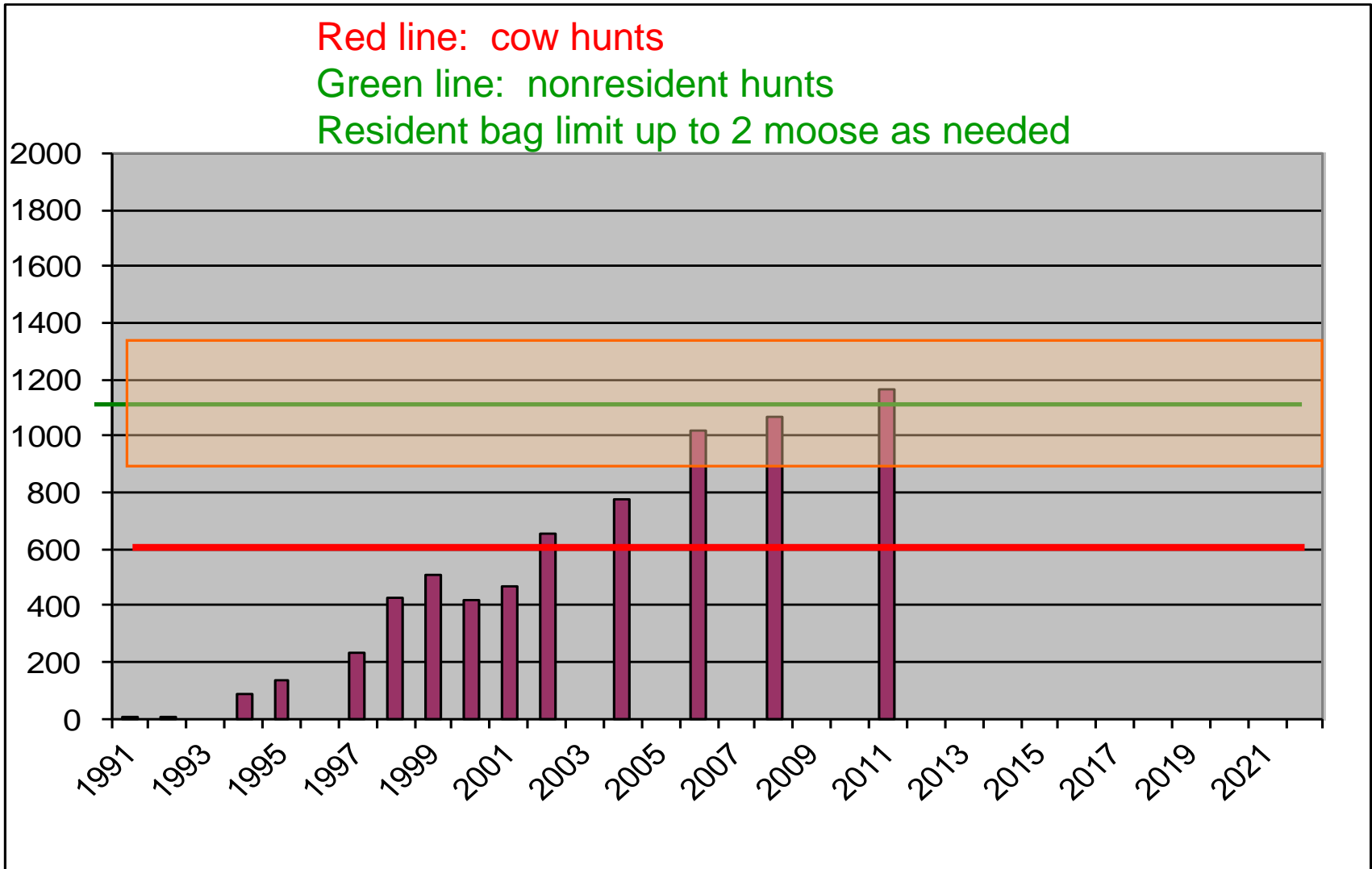
Old Thresholds and Old Objectives



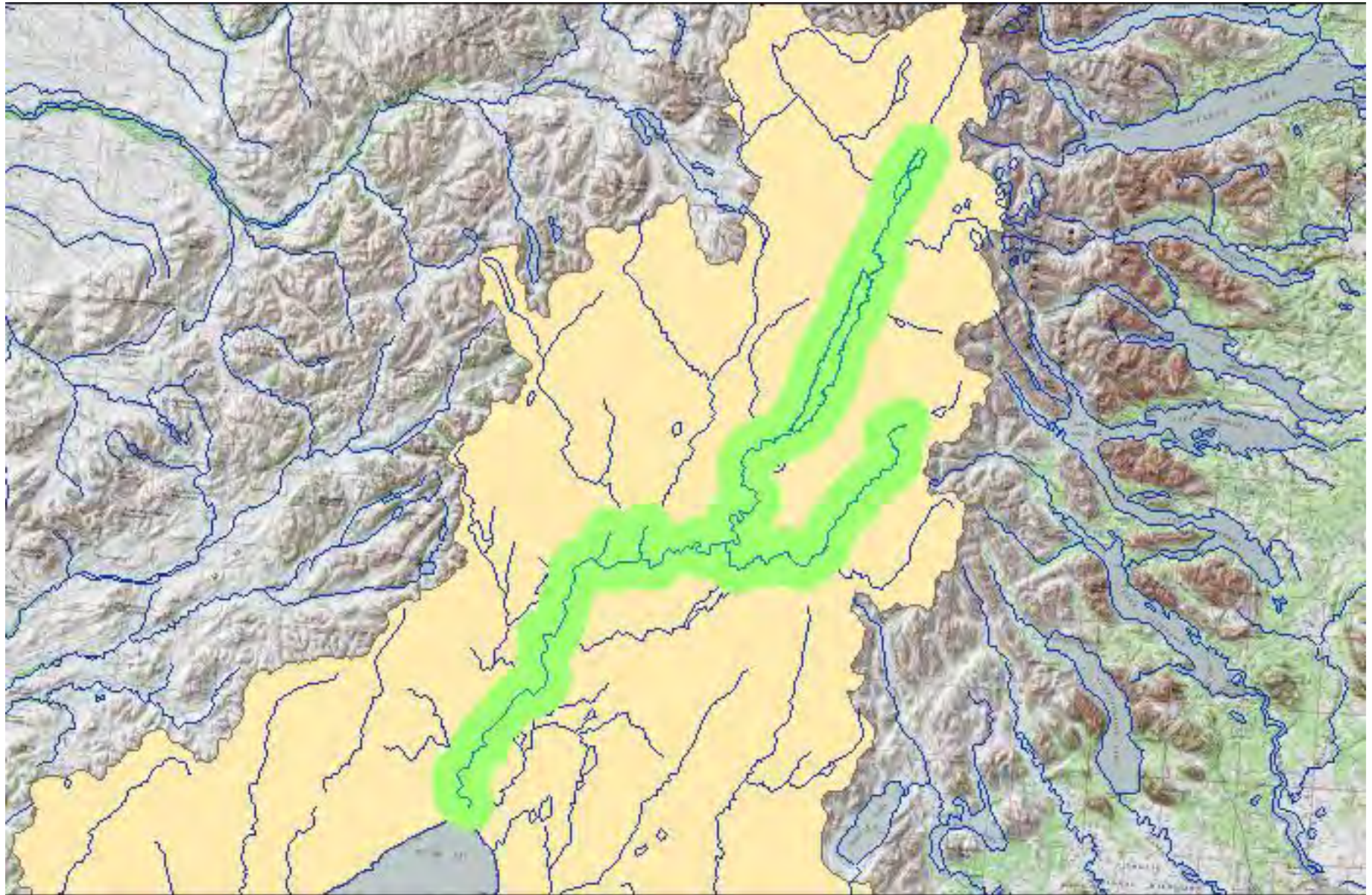
New Objectives and Old Thresholds



New Objectives and New Thresholds



Proposed Aircraft Restriction for Moose Hunting



Unit 17A Moose Planning Participants

- Togiak AC
- Nushagak AC
- Bristol Bay RAC
- APHA
- ADF&G
- USFWS