

2024 Spring Troll Fishery Areas

by

Grant Hagerman

and

Michael Vaughn

April 2024

Alaska Department of Fish and Game

Division of Commercial Fisheries



LIST OF FIGURES

Figure	Page
Figure 1.– Ketchikan spring troll areas.....	6
Figure 2.– Craig spring troll areas.	7
Figure 3.– Frederick Sound spring troll area.	8
Figure 4.– Sitka spring troll areas.....	9
Figure 5.– North Chatham Strait and Icy Strait spring troll chum salmon areas.	10
Figure 6.– Yakutat Bay spring troll area.....	11
Figure 7.– Southeast Alaska lingcod management areas and restricted waters of Sitka Sound Special Use Area.	12

2024 SPRING TROLL AREAS AND MAPS

KETCHIKAN AREAS (Figure 1)

Mountain Point (fishery area 101-45): In the waters of George and Carroll Inlets north of a line from Mountain Point at 55°17.57' N lat, 131°32.41' W long, to Cutter Rocks Light at 55°17.34' N lat, 131°31.47' W long, to 55°17.57' N lat, 131°28.18' W long, including all waters of George Inlet and waters of Carroll Inlet south of the latitude of California Head at 55°19.57' N lat.

Rock Point (fishery area 101-46): In the waters of Carroll Inlet north of the latitude of California Head at 55°19.57' N lat, and south of the latitude of Nigelius Point at 55°33.50' N lat.

CRAIG AREAS (Figure 2)

Bucareli Bay (fishery area 103-50) Modified Area: In the waters of Ursua Channel and Bucareli Bay south and east of a line from Cape Suspiro at 55°27.47' N lat, 133°08.50' W long, to the Ballena Island Shoal Light at 55°28.24' N lat, 133°13.25' W long, to Point Amargura at 55°27.00' N lat, 133°21.64' W long, to 55°24.67' N lat, 133°21.18' W long, to Point Providence at 55°21.51' N lat, 133°16.10' W long, and north and west of a line from Point Lomas at 55°22.67' N lat, 133°10.53' W long, to the western tip of Madre de Dios Island at 55°23.63' N lat, 133°09.65' W long, to the southernmost tip of Toti Island at 55°24.47' N lat, 133°07.45' W long, to the northernmost tip of Toti Island at 55°24.90' N lat, 133°07.34' W long, to Cape Suspiro at 55°27.47' N lat, 133°08.50' W long.

Trocadero Bay (fishery area 103-60) Modified Area: In the waters of Trocadero Bay south and east of a line from Point Lomas at 55°22.67' N lat, 133°10.53' W long, to the western tip of Madre de Dios Island at 55°23.63' N lat, 133°09.65' W long, to the southernmost tip of Toti Island at 55°24.47' N lat, 133°07.45' W long, to the northernmost tip of Toti Island at 55°24.90' N lat, 133°07.34' W long, to Point Miraballes at 55°25.85' N lat, 133°05.23' W long.

Port Saint Nicholas (fishery area 103-63): In the waters of Port Saint Nicholas and Bucareli Bay enclosed by a line from Cape Suspiro at 55°27.47' N lat, 133°08.50' W long, to the northernmost tip of Toti Island at 55°24.90' N lat, 133°07.34' W long, to Point Miraballes at 55°25.85' N lat, 133°05.23' W long.

San Alberto Bay (fishery area 103-70) Modified Area: In the waters of Ursua Channel, San Alberto Bay, and Shinaku and Klawock Inlets east of a line from Point Polocano at 55°32.35' N lat, 133°17.36' W long, to 55°34.61' N lat, 133°16.56' W long, south and west of a line from 55°34.89' N lat, 133°10.97' W long, to 55°35.20' N lat, 133°07.07' W long, west of a line from Cemetery Point at 55°33.84' N lat, 133°06.38' W long, to the northernmost tip of Klawock Island at 55°33.41' N lat, 133°06.38' W long, and north of a line from Cape Suspiro at 55°27.47' N lat, 133°08.50' W long, to the Ballena Island Shoal Light at 55°28.24' N lat, 133°13.25' W long, to Point Amargura at 55°27.00' N lat, 133°21.64' W long.

FREDERICK SOUND AREA (Figure 3)

Keku Strait Hatchery Chum Salmon Area (fishery area 109-42) Modified Area: In the waters of Districts 9 and 10 enclosed by a line extending from Cornwallis Point Light at 56°55.92' N lat, 134°16.41' W long to a point approximately 1.0 nmi north of Cornwallis Point Light at 56°56.80' N lat, 134°16.41' W long, to West Pinta Rocks Light at 57°05.17' N lat, 134°00.72' W long, to Cape Bendel at 57°04.27' N lat, 134°00.72' W long, and in waters west of a line from Point Camden at 56°48.58' N lat, 133°53.14' W long, to Salt Point Light at 56°50.69' N lat, 133°52.01' W long. Waters of the Southeast Cove THA and the Gunnuk Creek SHA are excluded. Refer to the Southeast Cove and Gunnuk Creek THA advisory announcements for new area descriptions and coordinate updates for the 2024 season.

SITKA AREAS (Figure 4)

Western Channel (fishery area 113-01) Modified Area: In the waters of Sitka Sound northeast of a line from Kulichkof Rock at 56°59.48' N lat, 135°26.65' W long, to Vitskari Island Light at 57°00.00' N lat, 135°32.71' W long to a point on Kruzof Island at 57°03.42' N lat, **135°36.08' W long**, southwest of a line from a point on Kruzof Island at **57°05.02' N lat, 135°35.06' W long**, to 57°01.50' N lat, 135°24.25' W long (the intersection of a line from a point on Kruzof Island at **57°05.02' N lat, 135°35.06' W long**, through The Eckholms Light, with a line from the southernmost tip of Makhnati Island to Kulichkof Rock), to Kulichkof Rock at 56°59.48' N lat, 135°26.65' W long.

Redoubt Bay (fishery area 113-30) Modified Area: In the waters of Sitka Sound south of a line from the westernmost tip of Cape Burunof at 56°59.04' N lat, 135°23.21' W long to Kulichkof Rock at 56°59.48' N lat, 135°26.65' W long and east of a line from Kulichkof Rock at 56°59.48' N lat, 135°26.65' W long, to the northwesternmost point on Peisar Island at 56°53.72' N lat, 135°26.85' W long, and from the southernmost point on Peisar Island at **56°52.75' N lat, 135°25.94' W long**, to the southernmost point on Viesokoi Rock at 56°52.15' N lat, **135°25.01' W long**, to a point on Baranof Island at 56°51.40' N lat, 135°23.49' W long.

Goddard Area (fishery area 113-31) Modified Area: In the waters enclosed by a line from Baranof Island at 56°51.40' N lat, 135°23.49' W long, to the southernmost point on Viesokoi Rock at 56°52.15' N lat, **135°25.01' W long**, to the southernmost point on Peisar Island at **56°52.75' N lat, 135°25.94' W long**, and from a point on Peisar Island at 56°53.00' N lat, 135°26.44' W long to Middle Rock at 56°50.91' N lat, 135°27.19' W long, to a point on Maid Island at 56°50.25' N lat, 135°27.74' W long, to the northwesternmost tip of Legma Island at 56°50.07' N lat, 135°27.19' W long, and from a point on the eastern shore of Legma Island at 56°49.20' N lat, 135°26.93' W long to the northern tip of Pishak Island at 56°48.68' N lat, 135°26.21' W long, to a point on Elovoi Island at 56°48.91' N lat, 135°24.89' W long, and north and west of a line from Elovoi Island at 56°49.44' N lat, 135°23.15' W long, to a point on Baranof Island at **56°49.59' N lat, 135°22.59' W long**.

West Crawfish Inlet (fishery area 113-32): In the waters of West Crawfish Inlet, First Narrows, and Second Narrows northeast of a line from 56°46.60' N lat, 135°18.53' W long, to 56°43.30' N lat, 135°17.80' W long, excluding all waters of the Crawfish Inlet THA east of a line from **56°44.21' N lat, 135°15.76' W long, to 56°43.30' N lat, 135°17.80' W long and south of Cedar Pass at 56°47.14' N lat**.

Sitka Sound (fishery area 113-41) Modified Area: In the waters of Sitka Sound, Krestof Sound, and Neva Strait south of 57°15.00' N lat, and north and east of a line from the westernmost tip of Cape Burunof at 56°59.04' N lat, 135°23.21' W long, to Kulichkof Rock at 56°59.48' N lat, 135°26.65' W long, to 57°01.50' N lat, 135°24.25' W long (the intersection of a line from a point on Kruzof Island at **57°05.02' N lat, 135°35.06' W long**, through The Eckholms Light, with a line from the southernmost tip of Makhnati Island to Kulichkof Rock), to a point on Kruzof Island at **57°05.02' N lat, 135°35.06' W long**, including the waters of Nakwasina Passage, Nakwasina Sound, and Katlian Bay.

The waters of the Silver Bay and Deep Inlet are included in the Sitka Sound Area through May 31. These areas will open as the Silver Bay and Deep Inlet THAs beginning June 1. The waters of Bear Cove east of a line from a point on the south shore at 57°00.77' N lat, 135°09.08' W long to the north shore at 57°00.94' N lat, 135°09.23' W long are closed to commercial salmon troll gear.

Salisbury Sound (fishery area 113-62): In the waters of Peril Strait south of the latitude of Pogibshi Point at 57°30.50' N lat, and in waters of Salisbury Sound east of 135°46.00' W long, including Sukoi Inlet and waters of Neva Strait north of 57°15.00' N lat.

NORTH CHATHAM STRAIT AND ICY STRAIT AREAS (Figure 5)

Northern Chatham Strait Hatchery Chum Salmon Area (fishery area 112-16): In the waters enclosed by a line from 58°11.29' N lat, 134°53.27' W long, to 58°10.40' N lat, 135°02.63' W long, to 58°07.78' N lat, 135°00.78' W long, to 58°05.81' N lat, 134°47.09' W long.

Cross Sound Hatchery Chum Salmon Area (fishery area 114-21) Modified Area: In the waters of Section 14-A, in Dundas Bay east of a line from 58°22.90' N lat, 136°25.30' W long to 58°23.60' N lat, 136°24.60' W long, west of a line from the southernmost tip of Point Dundas at 58°18.93' N lat, 136°16.79' W long, to the westernmost tip of Lemesurier Island at 58°16.74' N lat, 136°09.45' W long, to the prominent point on the northeastern side of the Inian Peninsula at 58°13.43' N lat, 136°17.00' W long, east of the line of longitude extending south from the southernmost tip of Taylor Island at 58°16.98' N lat, 136°29.02' W long, to the point on that line that intersects at 58°10.00' N lat, north of a line that continues east to Althorp Rock Light at 58°09.98' N lat, 136°21.56' W long, and west of the line continuing north to the **Elfin Cove Entrance Light 2 at 58°11.68' N lat, 136°21.11' W long.**

South Passage Hatchery Chum Salmon Area (fishery area 114-23) Modified Area: In the waters of Icy Strait south and east of a line extending from the prominent point on the northeastern side of Inian Peninsula at 58°13.43' N lat, 136°17.00' W long, to the westernmost tip of Lemesurier Island at 58°16.74' N lat, 136°09.45' W long, from the Lemesurier Island Light at 58°19.15' N lat, 136°02.45' W long, to Point Gustavus at **58°22.75' N lat, 135°54.93' W long**, and west of a line from Point Adolphus Light at 58°17.16' N lat, 135°46.98' W long, to a point approximately 1.0 nmi north of Point Adolphus at 58°18.04' N lat, 135°46.98' W long, north of a line continuing southeast to 58°14.65' N lat, 135°32.20' W long, and west of the line extending north from that point through Noon Point on the 135°32.20' W long, **to the mainland shore at 58°23.88' N lat, 135°32.20' W long**, including the waters of Icy Passage.

Homeshore Hatchery Chum Salmon Area (fishery area 114-25): In the waters of Icy Strait east of the longitude of Noon Point at 135°32.20' W long, and west of 135°09.60' W long, and north of a line from 58°09.58' N lat, 135°09.60' W long, to the northern tip of the northernmost island of the Sisters Islands at 58°10.78' N lat, 135°15.48' W long, to 58°14.65' N lat, 135°32.20' W long.

Point Couverden Hatchery Chum Salmon Area (fishery area 114-26): In the waters enclosed by a line from 58°11.63' N lat, 135°09.60' W long, to 58°09.58' N lat, 135°09.60' W long, to 58°07.78' N lat, 135°00.78' W long, to 58°10.00' N lat, 135°02.35' W long, to 58°10.00' N lat, 135°06.24' W long, to 58°11.63' N lat, 135°09.60' W long.

YAKUTAT AREA (Figure 6)

Yakutat Bay (Fishery Area 183-10): In the waters of Yakutat Bay east of a line from Point Manby at **59°41.68' N lat, 140°19.64' W long** to a point south of Ocean Cape Light at **59°32.11' N lat, 139°51.32' W long.**

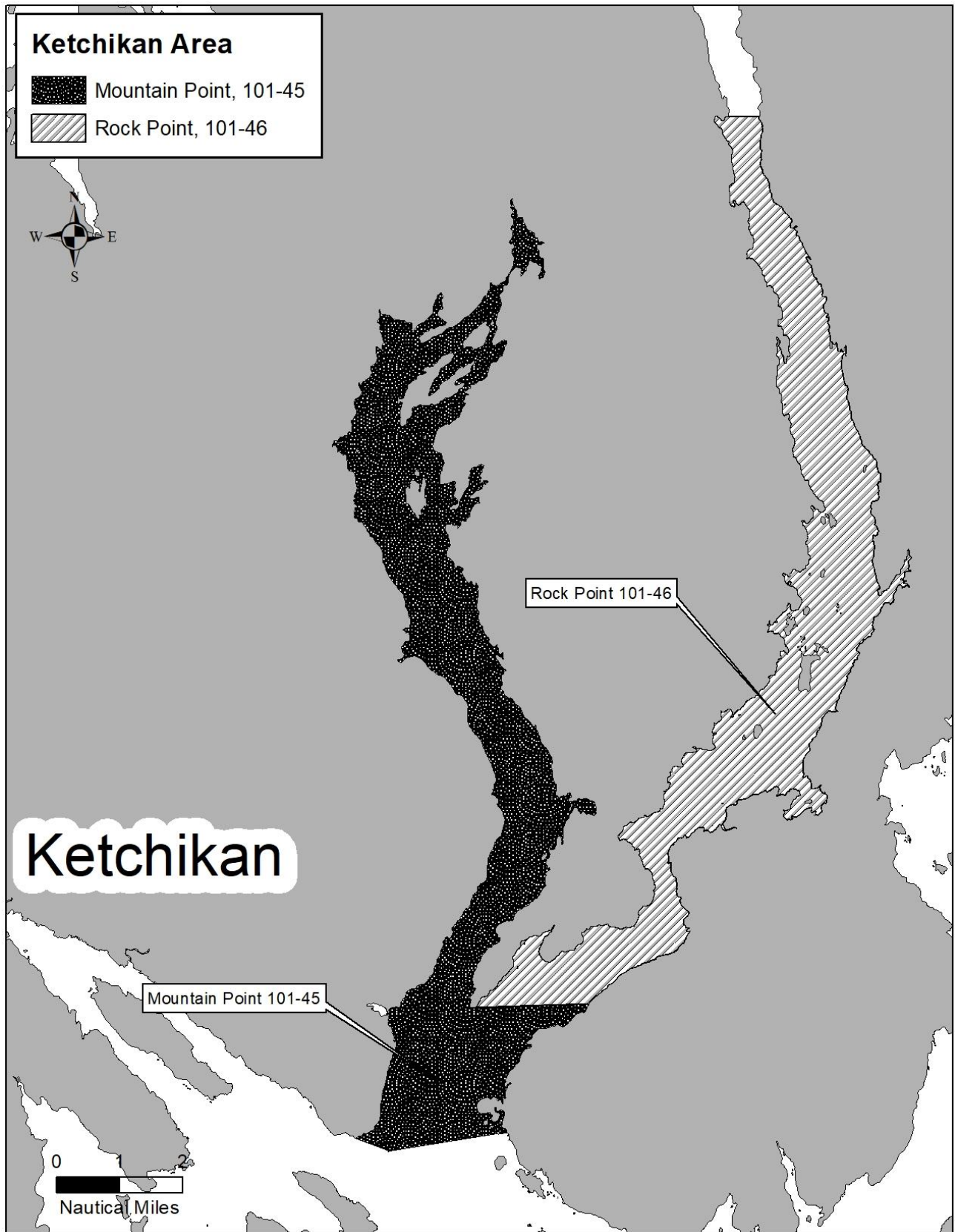


Figure 1.– Ketchikan spring troll areas.

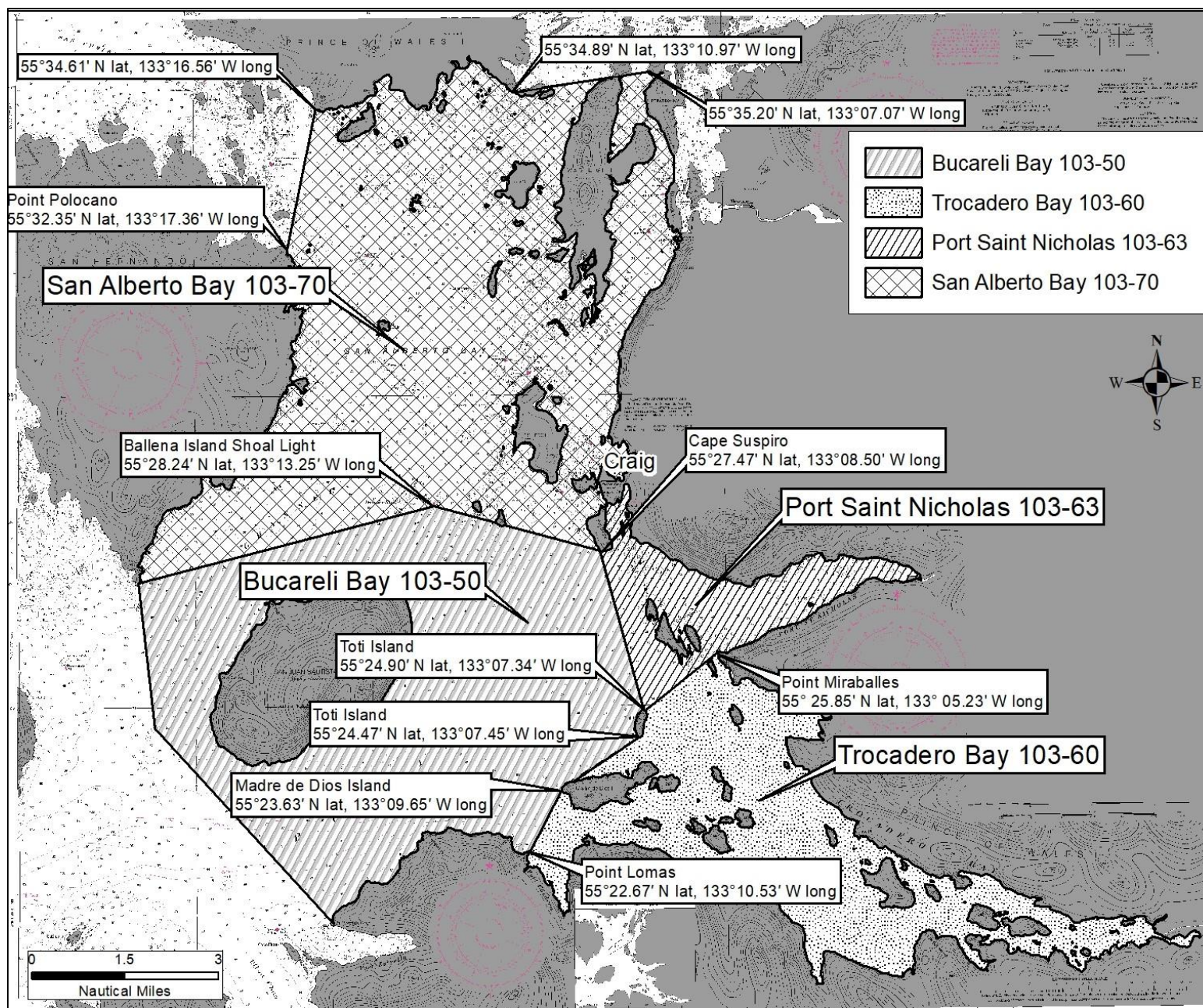


Figure 2.– Craig spring troll areas.

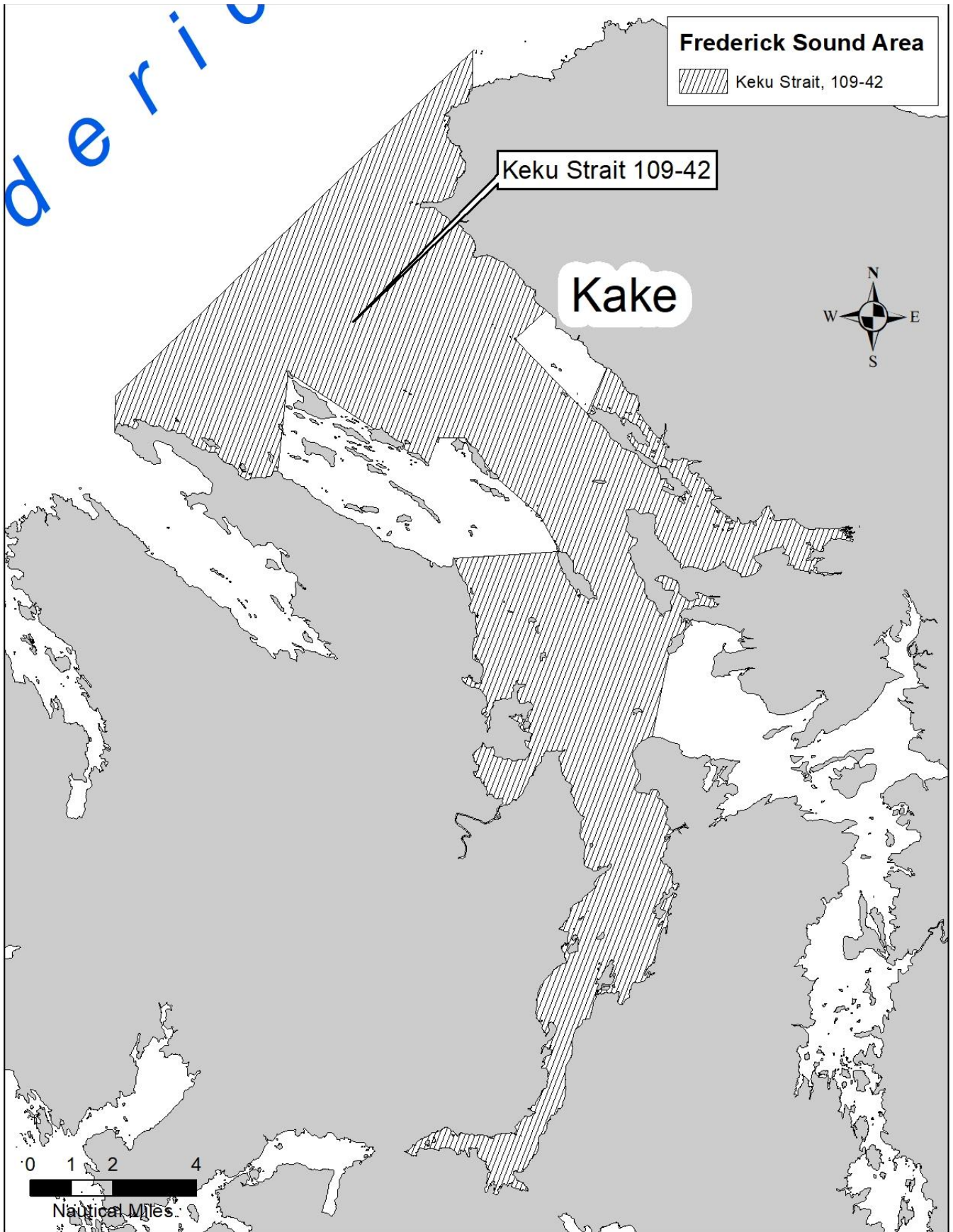


Figure 3.– Frederick Sound spring troll area.

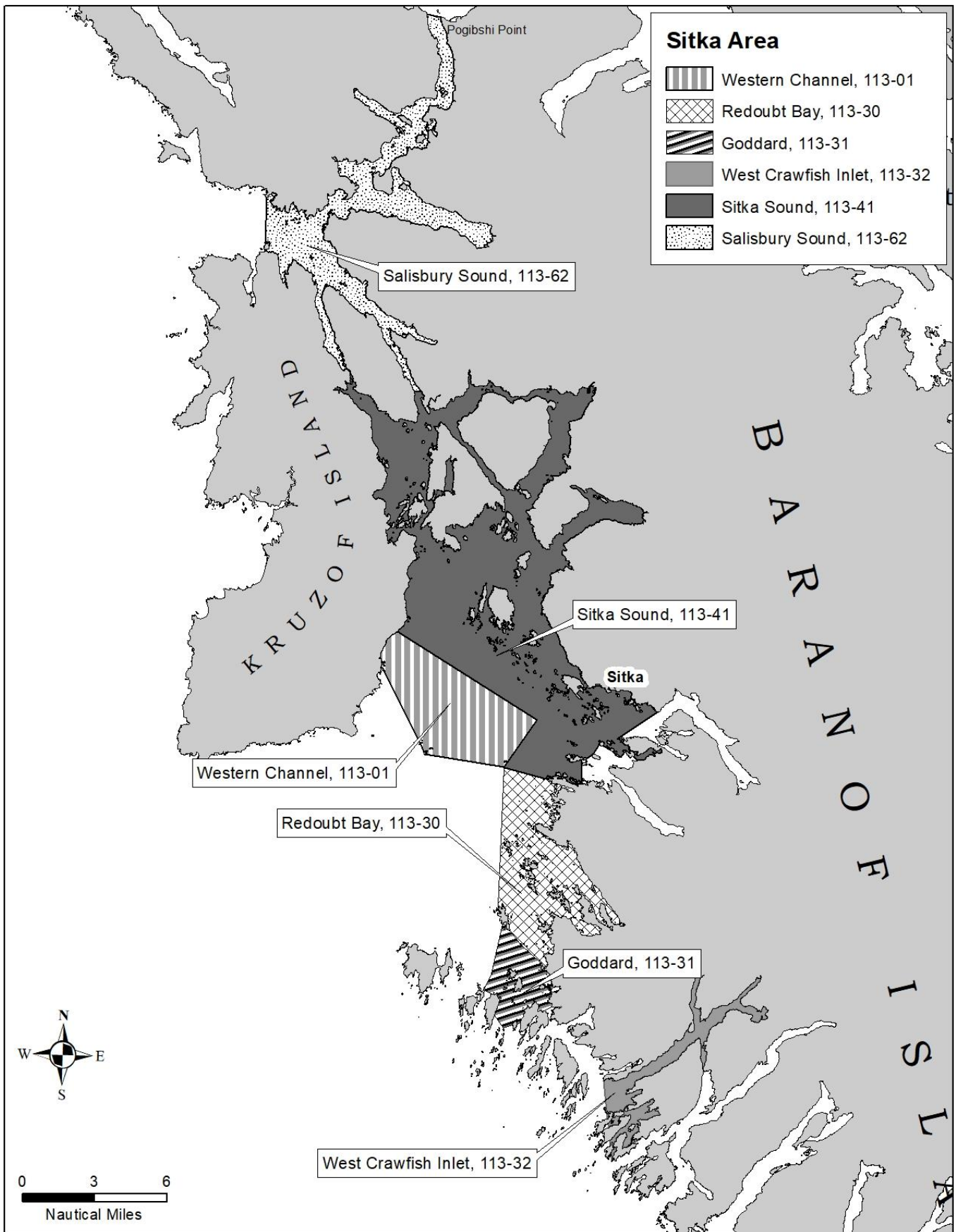


Figure 4.– Sitka spring troll areas.

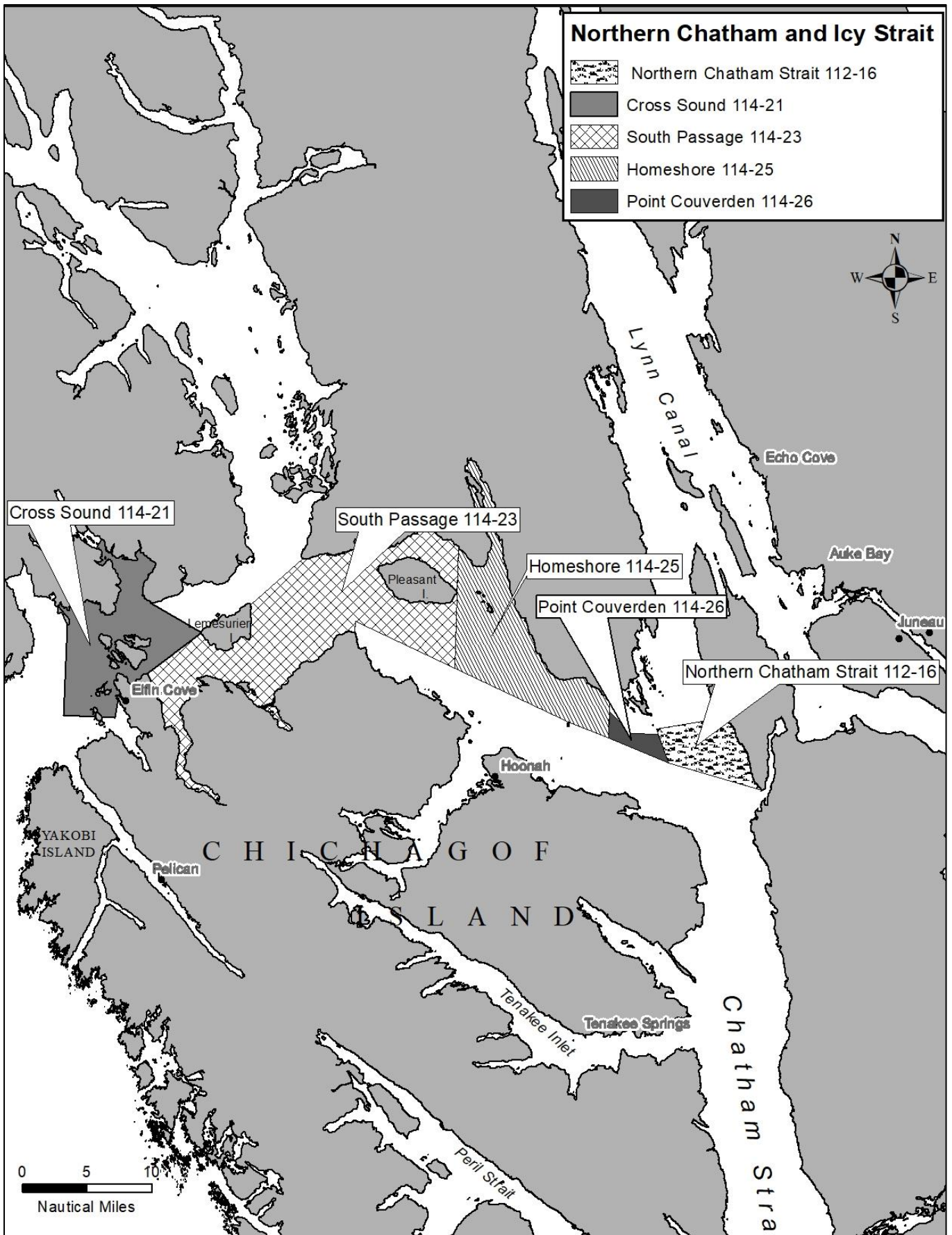


Figure 5.– North Chatham Strait and Icy Strait spring troll chum salmon areas.

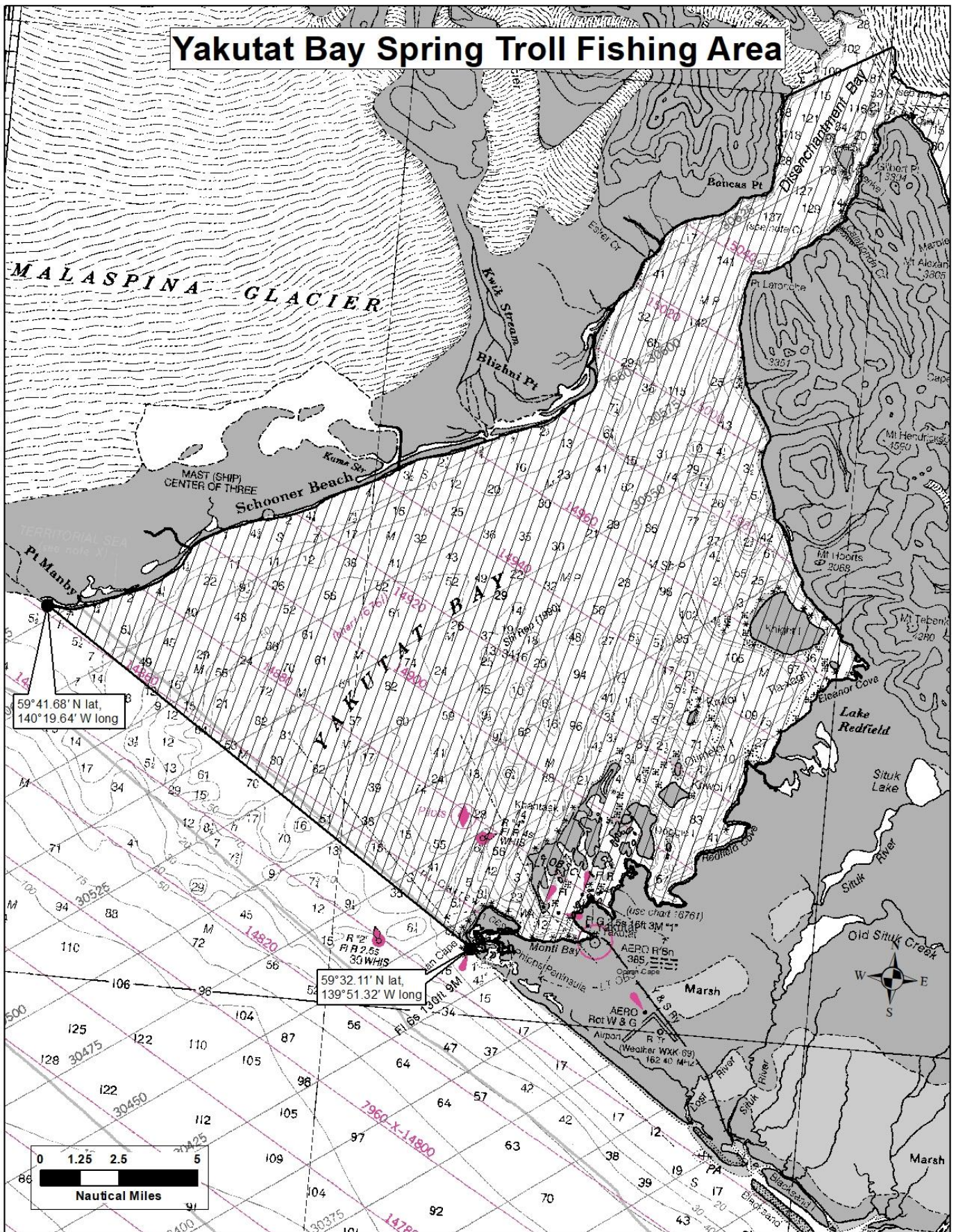


Figure 6.– Yakutat Bay spring troll area.

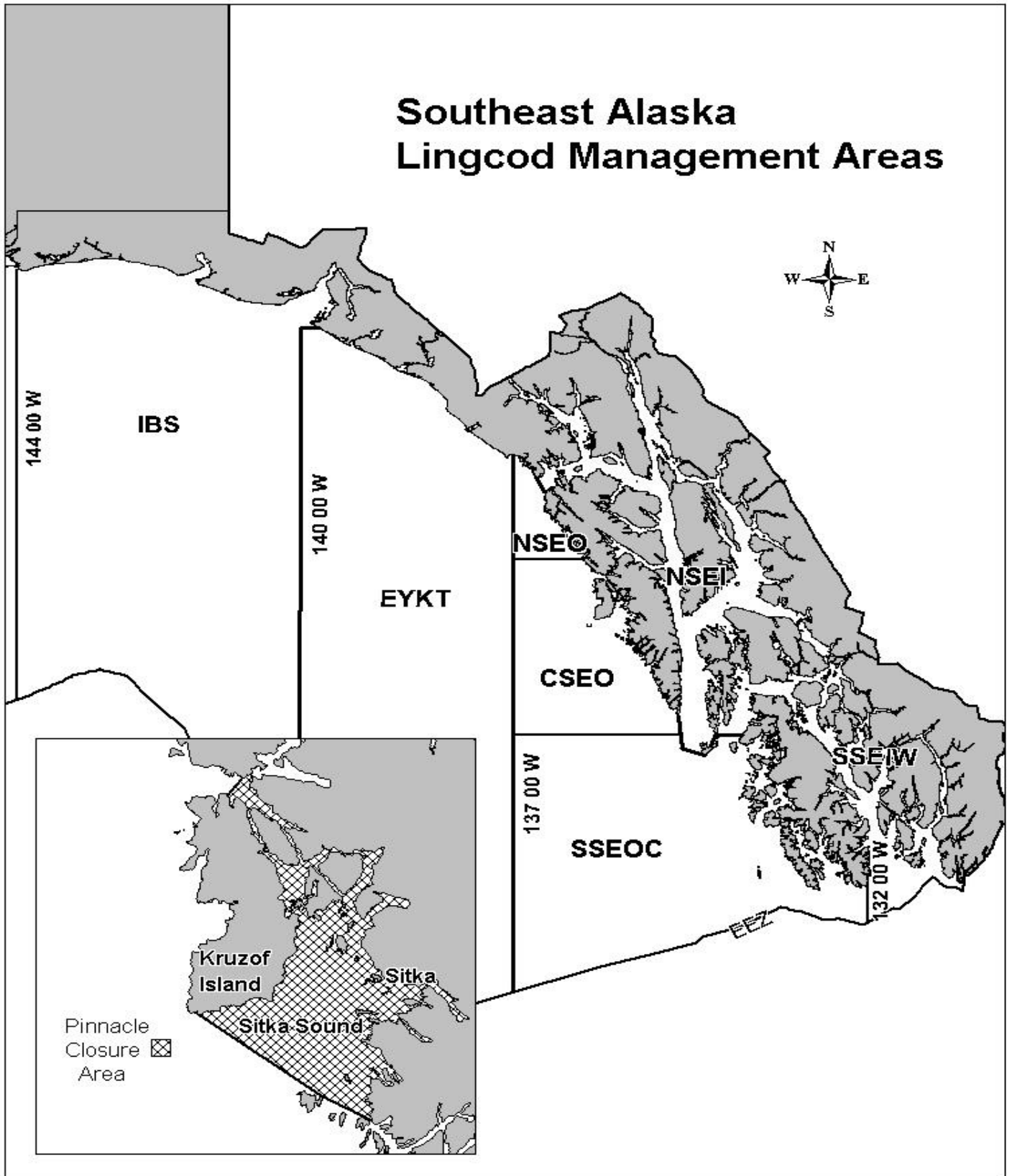


Figure 7.— Southeast Alaska lingcod management areas and restricted waters of Sitka Sound Special Use Area.

Note: See January 2, 2024 Groundfish Bycatch in the Salmon Troll Fishery Advisory Announcement for updated bycatch regulations and allowances.

FISHERY CONTACTS

The following are Division of Commercial Fisheries contacts regarding this management plan:

Grant Hagerman
Troll Management Biologist
304 Lake Street, #103
Sitka, Alaska 99835
(907) 747-6688

Mike Vaughn
Assistant Troll Management Biologist
304 Lake Street, #103
Sitka, Alaska 99835
(907) 747-6688

Troy Thynes
Regional Management Coordinator
P. O. Box 667
Petersburg, Alaska 99833
(907) 772-3801

Anne Reynolds Manney
Regional Supervisor
2030 Sea Level Drive Suite 205
Ketchikan, Alaska 99901
(907) 228-3013

Rhea Ehresmann
Groundfish Project Leader
304 Lake Street, #103
Sitka, Alaska 99835
(907) 747-6688

For updated information on the troll fishery, call the 24-hour information line in the Douglas (907) 465-TROL (8765), Sitka (907) 747-8765, or Ketchikan (907) 225-6870.

SOUTHEAST ALASKA TROLL WEBSITE INFORMATION:

https://www.adfg.alaska.gov/index.cfm?adfg=commercialbyareaseoutheast.salmon_trollspring