

2024 Terminal Troll Harvest Areas

by

Grant Hagerman

and

Michael Vaughn

April 2024

Alaska Department of Fish and Game

Division of Commercial Fisheries



LIST OF FIGURES

Figure	Page
Figure 1.–Nakat Inlet Terminal Harvest Area.	2
Figure 2.–Carroll Inlet Terminal Harvest Area.....	3
Figure 3.–Neets Bay Terminal Harvest Area.....	4
Figure 4.–Kendrick Bay Terminal Harvest Area.	5
Figure 5.–Port Saint Nicholas Terminal Harvest Area.	7
Figure 6.–Anita Bay Terminal Harvest Area.....	8
Figure 7.–Gunnuk Creek Terminal Harvest Area.....	10
Figure 8.–Southeast Cove Terminal Harvest Area.	11
Figure 9.–Thomas Bay Terminal Harvest Area.....	12
Figure 10.–Hidden Falls Terminal Harvest Area.....	13
Figure 11.–Crawfish Inlet Terminal Harvest Area.	15
Figure 12.–Silver Bay Terminal Harvest Area.	16
Figure 13.–Deep Inlet Terminal Harvest Area.	17

2024 TERMINAL HARVEST AREAS AND MAPS

KETCHIKAN AREAS

Nakat Inlet Terminal Harvest Area (fishery area 101-10): In the waters of Nakat Inlet north of Surprise Point at 54°49.10' N lat and west of 130°42.75' W long from 12:01 a.m., Saturday, June 1 through 11:59 p.m., Sunday, November 10. The 500-yard stream closure regulation under 5 AAC 39.290(a)(2) will remain in effect in the Nakat Inlet THA, except during spring troll fisheries, as specified in 5 AAC 29.150(a)(2). (Figure 1)

Carroll Inlet Terminal Harvest Area (fishery area 101-48): In the waters of Carroll Inlet north of the latitude of Nigelius Point at 55°33.50' N lat, open to troll gear from 12:01 a.m., Saturday, June 1 through 11:59 p.m., Sunday, June 30. The waters north of the latitude of Nigelius Point and south of the latitude of 55°34.83' N lat (approximately 1.3 nautical mile [nmi] north of Nigelius Point) are open exclusively to troll gear from 12:01 a.m., Saturday, June 1 through 12:00 noon, Saturday, June 15. The 500-yard stream closure regulation under 5 AAC 39.290(a)(2) will **NOT** be in effect in the Carroll Inlet THA. (Figure 2)

Concurrent openings for troll, drift gillnet, and purse seine are scheduled in the waters of the THA north of 55°34.83' N lat from 12:01 a.m., Saturday, June 1 through 12:00 noon, Wednesday, June 12. All waters of the THA will be open exclusively to troll gear from 12:00 noon, Wednesday, June 12, through 12:00 noon, Saturday, June 15. Rotational net gear fisheries are scheduled for all waters of the THA beginning 12:00 noon, Saturday, June 15 and ending 12:00 noon, Sunday, June 30.

Neets Bay Terminal Harvest Area (fishery area 101-95): In the waters of Neets Bay east of the longitude of the easternmost tip of Bug Island at 131°39.14' W long, and west of the closed waters at the head of the bay. The closed waters at the head of the bay are those waters east of 131°29.86' W long, until the barrier net is in place; at that time, the closed waters are those waters east of the barrier net. (Figure 3)

The THA will remain open to troll gear from 12:01 a.m., Thursday, June 27 through 11:59 p.m., Thursday, August 1 as follows, unless closed by emergency order:

12:01 a.m., Thursday, June 27, to 11:59 p.m., Sunday, June 30, **east of the Bug Island line (131°39.14' W long);**
 12:01 a.m., Monday, July 1, to 12:00 noon, Monday, July 15, **east of the Chin Point line (131°42.10' W long);**
 12:00 noon, Monday, July 15, to 11:59 p.m., Thursday, August 1, **east of the Chin Point line and west of the Bug Island line (131°42.10' W long to 131°39.14' W long).**

The Neets Bay THA will expand on July 1 for troll gear to include those waters of Neets Bay east of the longitude of Chin Point at 131°42.10' W long; however, Chinook salmon retention and possession is prohibited in this expanded area between the Bug Island line and Chin Point during the first summer troll Chinook salmon retention period. Beginning 12:00 noon, Monday, July 15, troll gear is restricted to the waters of Neets Bay that are east of the longitude of Chin Point at 131°42.10' W long and west of the easternmost tip of Bug Island at 131°39.14' W long.

Kendrick Bay Terminal Harvest Area (fishery area 102-15): In the waters of Kendrick Bay west of 131°59.00' W long, and the waters of McLean Arm west of 131°57.80' W long from 12:01 a.m., Saturday, June 15, through 11:59 p.m., Monday, September 30. (Figure 4)

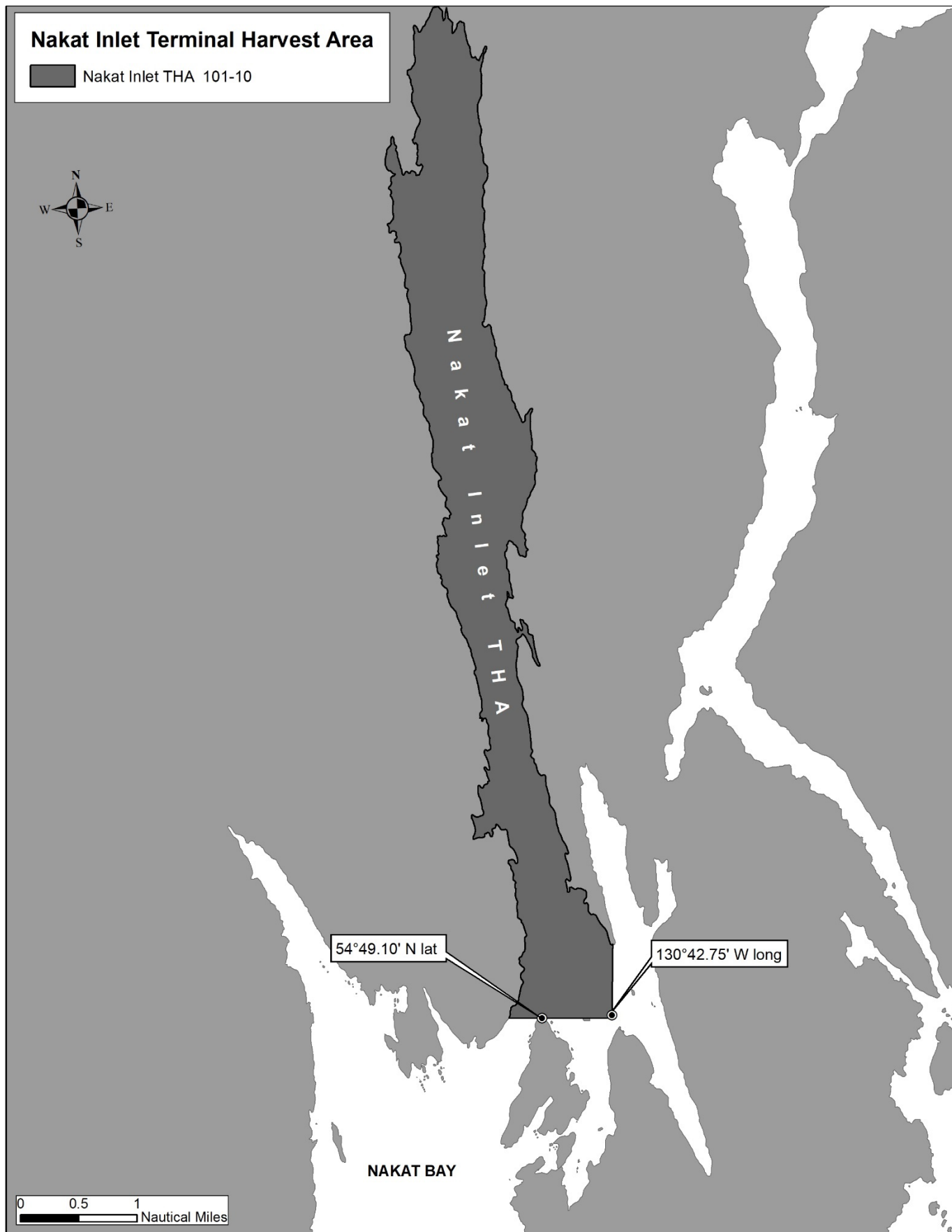


Figure 1.—Nakat Inlet Terminal Harvest Area.

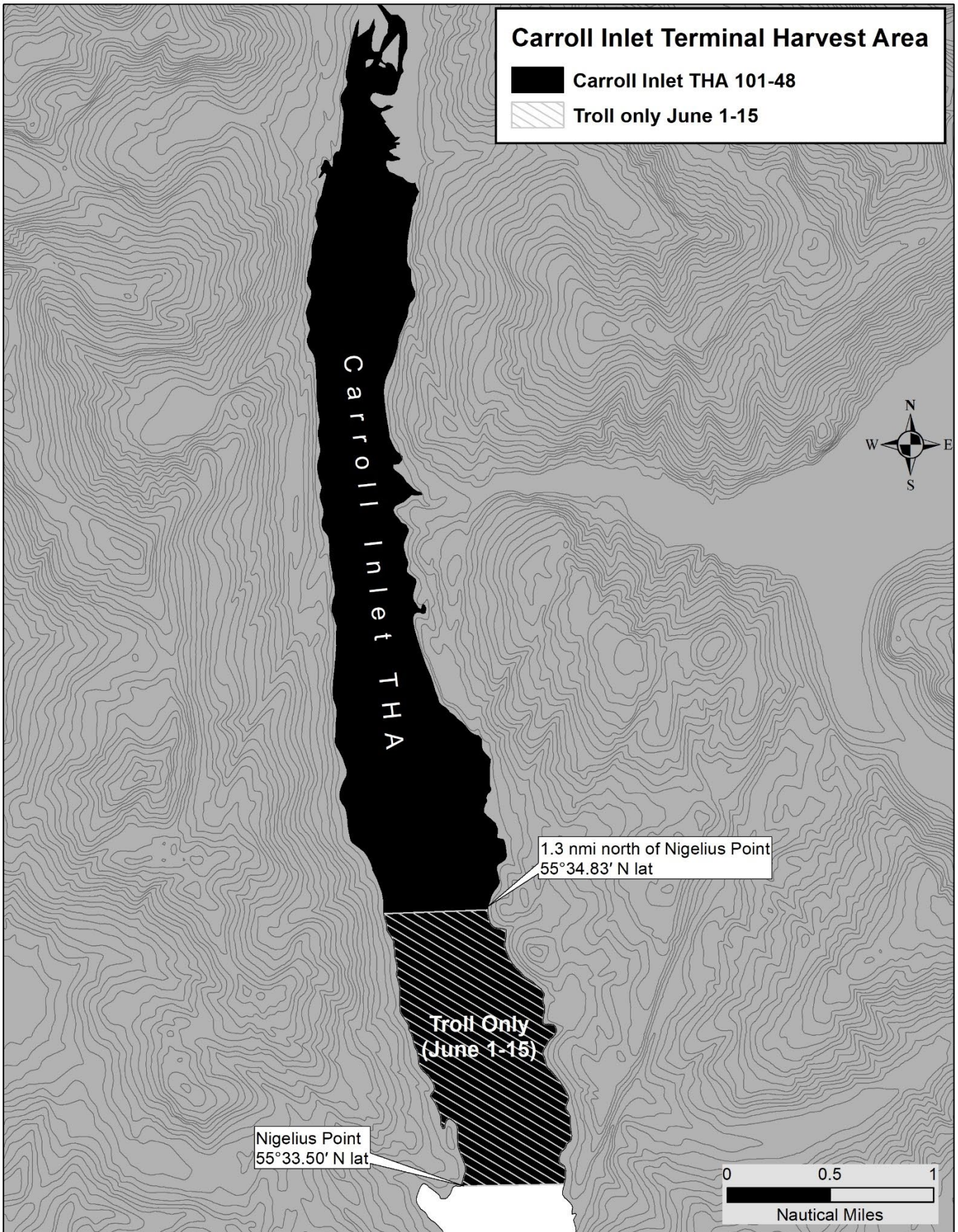


Figure 2.—Carroll Inlet Terminal Harvest Area.

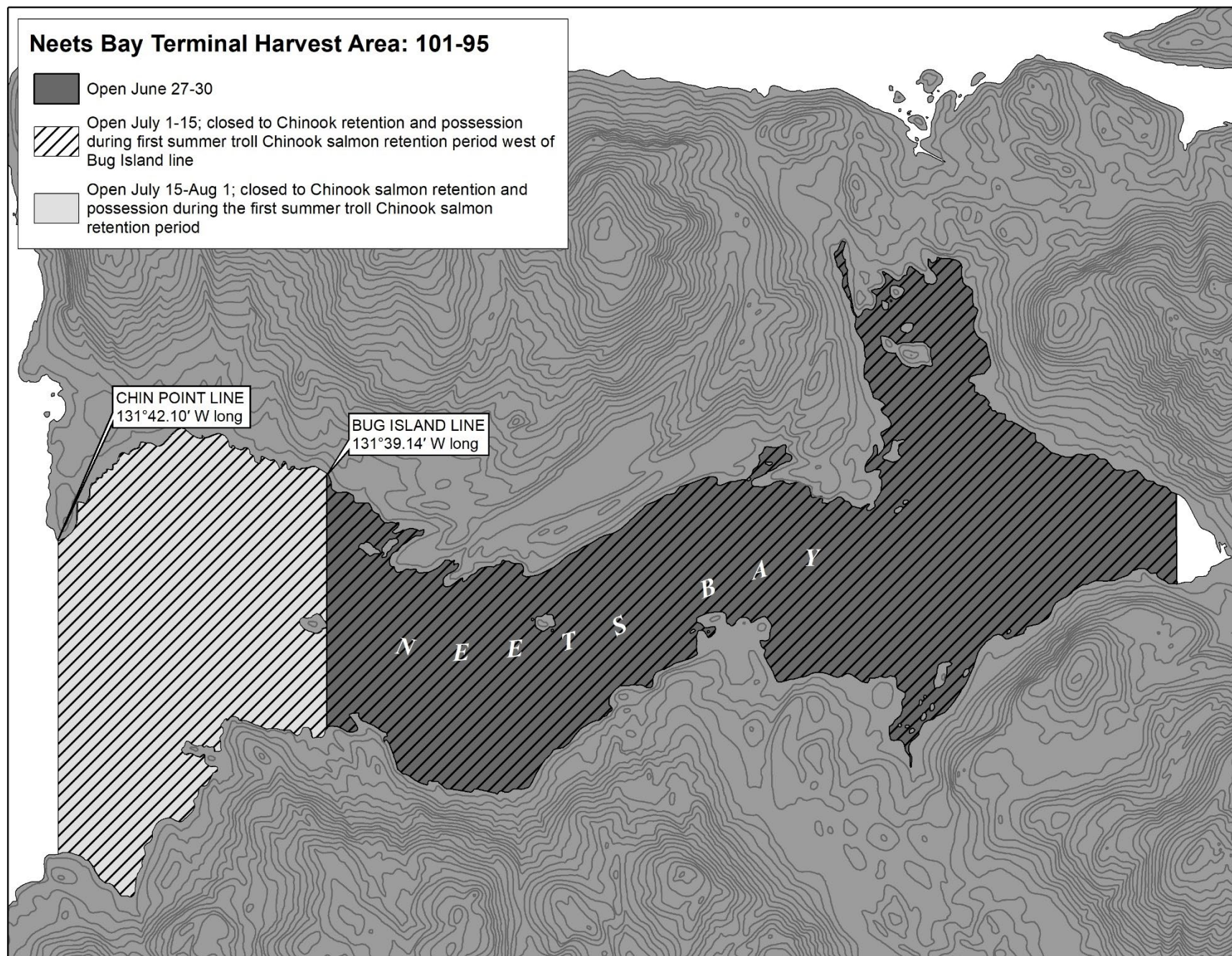


Figure 3.—Neets Bay Terminal Harvest Area.

CRAIG AND WRANGELL AREAS

Port Saint Nicholas Terminal Harvest Area (fishery area 103-63) Modified Area: In the waters of Port Saint Nicholas and Bucareli Bay enclosed by a line from Cape Suspiro at 55°27.47' N lat, 133°08.50' W long, to the northernmost tip of Toti Island at 55°24.90' N lat, 133°07.34' W long, to Point Miraballes at 55°25.85' N lat, 133°05.23' W long from 12:01 a.m., Saturday, June 1, through 11:59 p.m., Wednesday, July 31, unless closed by emergency order. **The waters of the Port Saint Nicholas Special Harvest Area (SHA) east of 133°02.92' W long are closed to common property fisheries during terminal harvest fishery openings prosecuted in the period of June 1 through July 31.** (Figure 5)

Anita Bay Terminal Harvest Area (fishery area 107-35): In the waters of Anita Bay south and west of a line from the tip of Anita Point at 56°13.68' N lat, 132°22.48' W long, to a point on the northern shore at 56°14.26' N lat, 132°23.93' W long. Troll gear may be operated in portions of the THA from 12:01 a.m., Saturday, June 1, through 11:59 p.m., Sunday, November 10. (Figure 6)

From 5:00 a.m., Saturday, June 1 through 12:00 noon, Wednesday, June 12, the waters of the Anita Bay THA north and east of a line from 56°12.90' N lat, 132°24.51' W long, to 56°12.75' N lat, 132°23.50' W long, are open to troll gear only.

As described in 5 AAC 33.383(b)(1), from 12:01 a.m., Saturday, June 15 through 11:59 p.m., Wednesday, July 10, the waters within 0.25 nmi of the northern shoreline of Anita Bay west of a line from 56°12.33' N lat, 132°26.19' W long, to 56°12.06' N lat, 132°26.19' W long, and east of a line from 56°11.96' N lat, 132°29.57' W long, to 56°11.73' N lat, 132°29.36' W long will be open.

NOTE: *waters south and west of the waters described in 5 AAC 33.383(b)(1) are closed to commercial salmon fishing as follows:*

- (1) from Saturday, June 15 through Tuesday, June 25, the waters of the Anita Bay THA west of 132°26.19' W long, are closed to the harvest of salmon.*
- (2) from Wednesday, June 26 through Monday, July 1, the waters of Anita Bay THA west of 132°26.98' W long, are closed to the harvest of salmon.*
- (3) from Tuesday, July 2 through Wednesday, July 10, the waters of Anita Bay THA west of 132°28.00' W long, are closed to the harvest of salmon.*

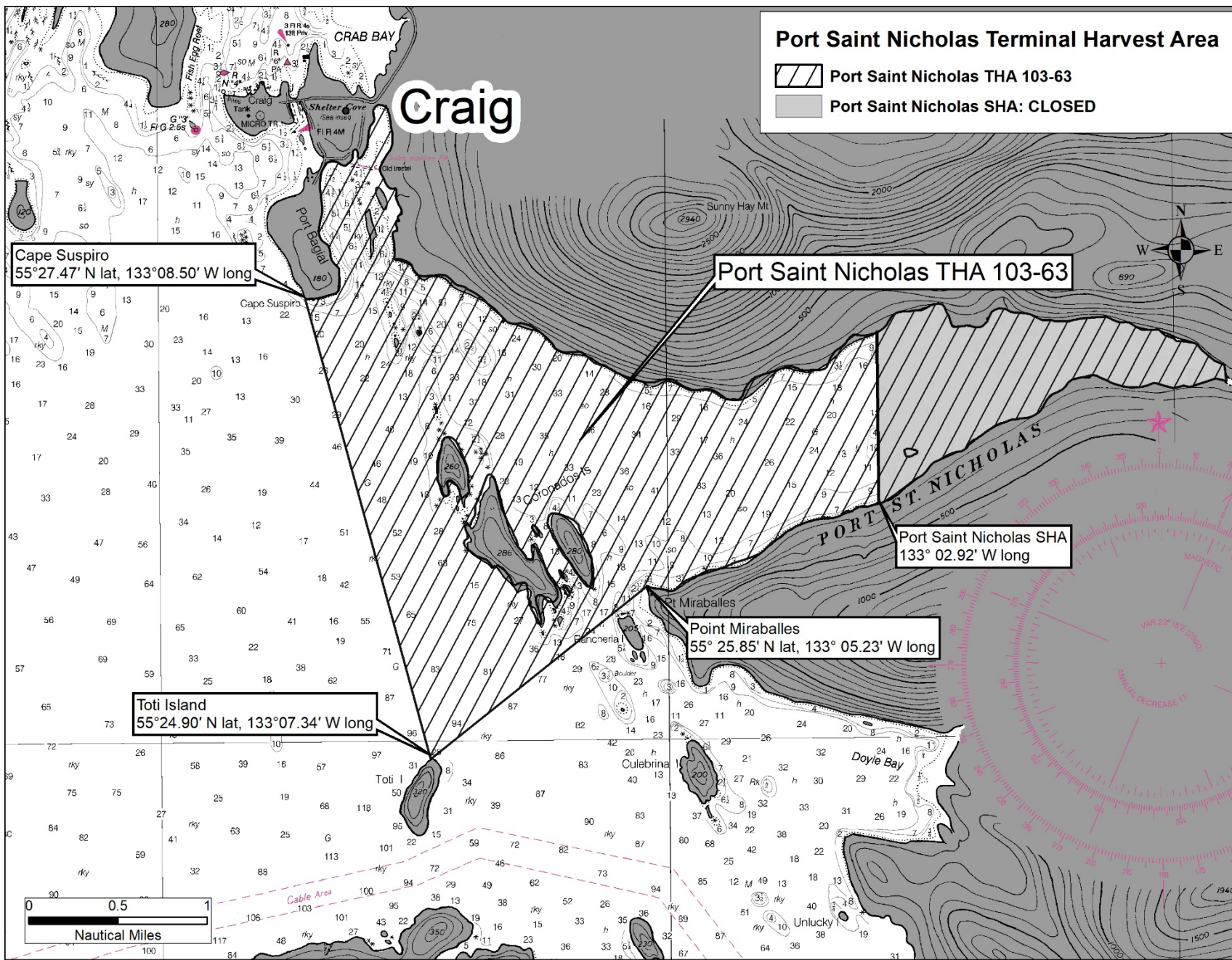


Figure 5.—Port Saint Nicholas Terminal Harvest Area.

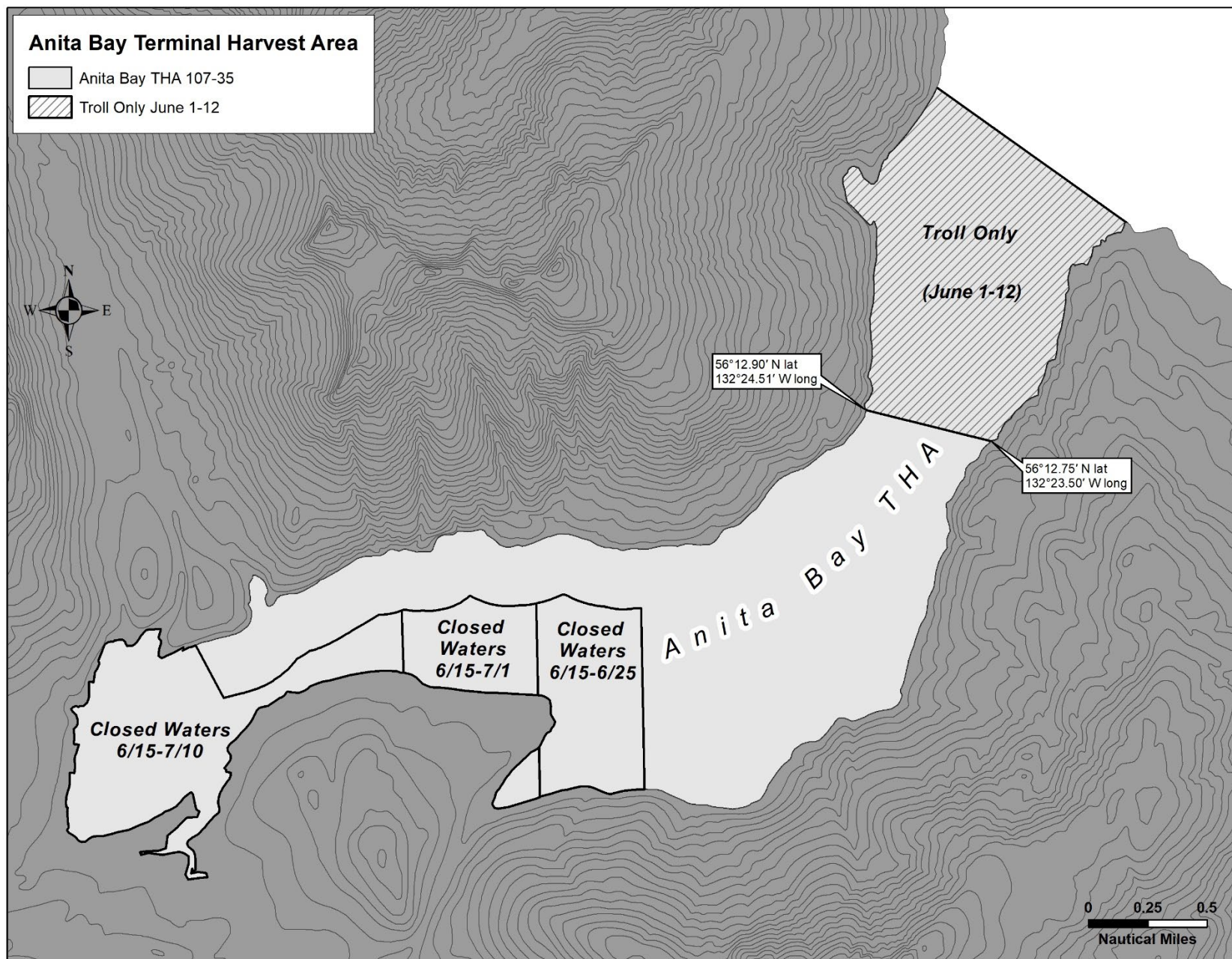


Figure 6.—Anita Bay Terminal Harvest Area.

CHATHAM STRAIT AND FREDERICK SOUND AREAS

Gunnuk Creek Terminal Harvest Area (fishery area 109-40) Modified Area: In the waters of Keku Strait enclosed by a line from a point northwest of Kake at 56°58.92' N lat, 133°57.48' W long to the southernmost tip of the southern Mosquito Island at 56°58.22' N lat, 133°58.85' W long, to the northwest tip of Hamilton Island at 56°56.45' N lat, 133°55.66' W long, to Wooten's Dock at 56°57.55' N lat, 133°54.78' W long from 12:01 a.m., Saturday, June 1, through 11:59 p.m., Sunday, June 30, unless closed by emergency order. (Figure 7)

Southeast Cove Terminal Harvest Area (fishery area 109-41) Modified Area: In the waters of Keku Strait enclosed by a line from a rocky point on the northern end of Kuiu Island located on the east side of Southeast Cove at 56°52.92' N lat, 134°01.49' W long, to the northern tip of Hound Island at 56°53.12' N lat, 133°56.83' W long, then northwest connecting points along the northern shore of Keku Islands at 56°53.98' N lat, 133°57.69' W long, to 56°55.85' N lat, 134°01.00' W long, to 56°55.85' N lat, 134°02.21' W long, to 56°55.20' N lat, 134°02.66' W long, then to the northwest corner of Payne Island at 56°57.40' N lat, 134°08.82' W long, then south to a point on Kuiu Island at 56°55.02' N lat, 134°09.26' W long from 12:01 a.m. to 11:59 p.m., Monday, Friday, and Saturday each week from Monday, June 17 through Saturday, August 3. (Figure 8)

Thomas Bay Terminal Harvest Area (fishery area 110-12) Modified Area: In the waters of Thomas Bay northeast of a line from Point Vandeput at 57°00.96' N lat, 133°00.02' W long, to Wood Point at 56°59.55' N lat, 132°56.96' W long, northwest of a line from a point on the mainland shoreline at 56°59.57' N lat, 132°54.02' W long, to Ruth Island at 57°00.42' N lat, 132°51.07' W long, north of a line from a point on the southeastern shoreline of Ruth Island at 56°58.70' N lat, 132°49.16' W long, to the mainland shoreline at 56°58.70' N lat, 132°47.32' W long, west of a line from the mainland shoreline at 56°59.38' N lat, 132°47.60' W long, to the southern tip of Spray Island at 56°59.80' N lat, 132°47.73' W long, to the northern tip of Spray Island at 57°00.07' N lat, 132°47.80' W long, to the mainland shoreline at 57°00.56' N lat, 132°47.57' W long, and south of a line from 57°03.00' N lat, 132°49.62' W long, to 57°03.00' N lat, 132°52.03' W long. Troll gear may be operated in portions of the THA during those periods the purse seine fishery is closed from 12:01 a.m., Sunday, June 16 through 11:59 p.m., Saturday, August 3. (Figure 9)

The waters of Spurt Cove are closed northwest of a line from 57°01.98' N lat, 132°52.49' W long, to 57°02.08' N lat, 132°52.37' W long.

Waters northeast of a line from the northern tip of Spray Island at 57°00.07' N lat, 132°47.80' W long, to a point on the northern boundary line approximately 0.5 nmi from the mainland shoreline at 57°03.00' N lat, 132°50.55' W long, are closed Saturdays and Sundays of each week from 12:01 a.m., Saturday to 11:59 p.m., Sunday.

Hidden Falls Terminal Harvest Area (fishery area 112-22) Modified area: In the waters of Chatham Strait, only those waters of District 12 south of the latitude of South Point at 57°16.28' N lat, north of 57°06.76' N lat, and west of a line from a point offshore at 57°16.28' N lat, 134°49.94' W long to a point offshore at 57°06.76' N lat, 134°45.37' W long. Beginning June 23, the THA will expand to include waters of District 12 south of the latitude of South Point at 57°16.28' N lat, north of 57°06.76' N lat, and west of a line from a point offshore at 57°16.28' N lat, 134°48.00' W long, to a point offshore at 57°06.76' N lat, 134°43.00' W long, excluding the waters of Kelp Bay. Troll gear may be operated in the Hidden Falls THA from 12:01 a.m., Saturday, June 1, through 11:59 p.m., Friday, September 20, as permitted under 5 AAC 33.374, unless closed by emergency order. (Figure 10)

The waters of the Hidden Falls THA that are north and west of a line from ADF&G regulatory markers located at 57°13.17' N lat, 134°51.86' W long to 57°13.08' N lat, 134°52.02' W long and north of a line from 57°13.05' N lat, 134°52.24' W long to 57°13.06' N lat, 134°52.20' W long, **are closed to commercial salmon fishing** (5 AAC 33.374[g]).

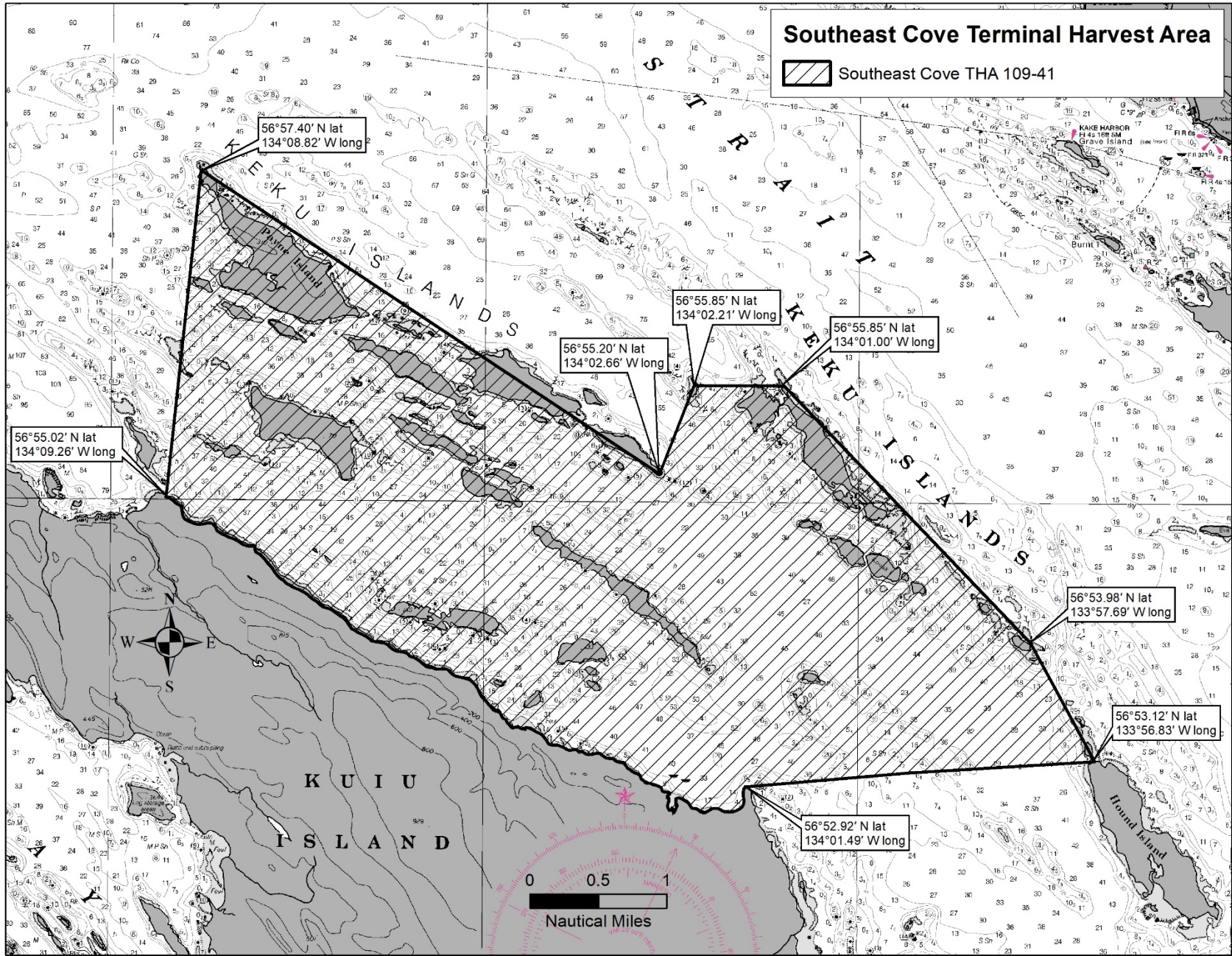


Figure 8.—Southeast Cove Terminal Harvest Area.

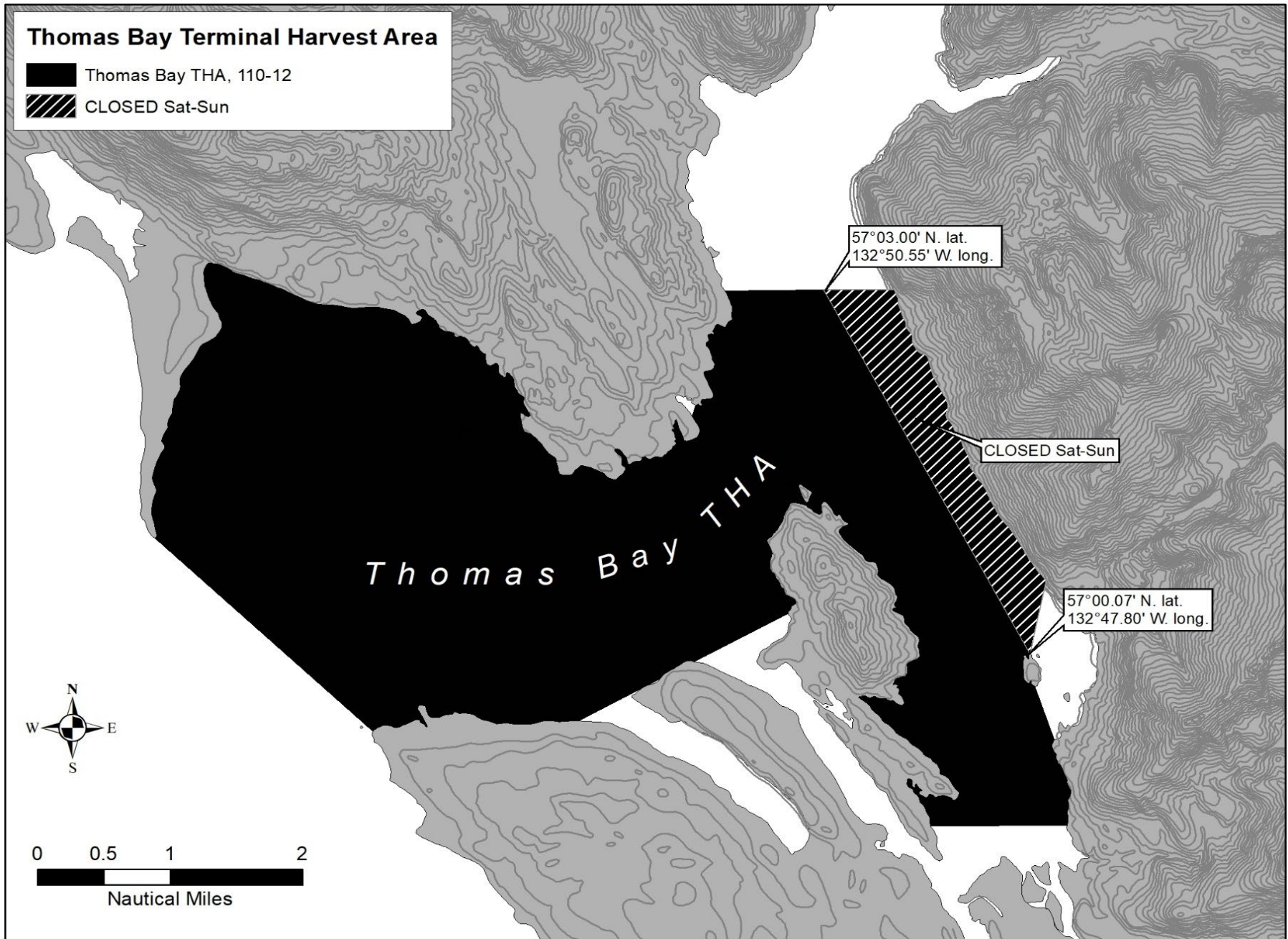


Figure 9.—Thomas Bay Terminal Harvest Area.

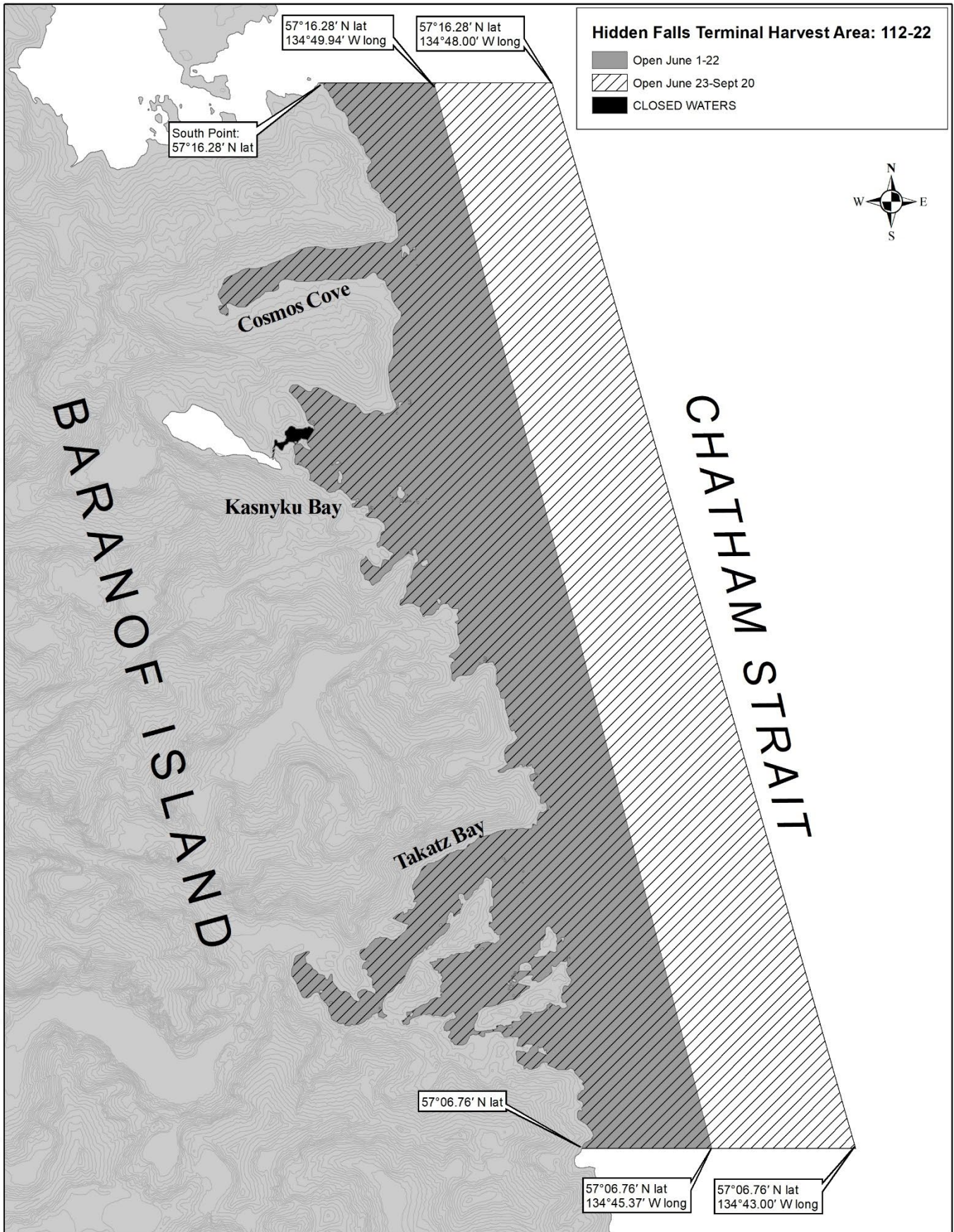


Figure 10.—Hidden Falls Terminal Harvest Area.

SITKA AREAS

Crawfish Inlet Terminal and Special Harvest Areas (fishery area 113-33) Modified Area: In the waters east of a line from 56°44.21' N lat, 135°15.76' W long, to 56°43.30' N lat, 135°17.80' W long, to 56°41.93' N lat, 135°17.54' W long, to 56°41.14' N lat, 135°13.80' W long, including the waters of Jamboree Bay and Cedar Pass south of 56°47.14' N lat, and Crawfish Inlet west of 135°11.05' W long from 12:01 a.m., Saturday, June 1, through 11:59 p.m., Friday, September 20, unless closed by emergency order. Waters of the SHA east of 135°11.05' W long, are open concurrent to the THA.

Silver Bay Terminal Harvest Area (fishery area 113-35) Modified Area: In the waters of Silver Bay east of a line from Entry Point Light at 57°01.96' N lat, 135°15.01' W long, to Silver Point at 57°00.80' N lat, 135°18.09' W long from 12:01 a.m., Saturday, June 1, through 11:59 p.m., Tuesday, July 30, unless closed by emergency order. The **waters of Bear Cove are closed** east of a line from a point on the south shore at 57°00.63' N lat, 135°09.80' W long, to the north shore at 57°01.07' N lat, 135°09.93' W long.

Deep Inlet Terminal Harvest Area (fishery area 113-38) Modified Area: In the waters of Deep Inlet, Aleutkina Bay, and contiguous waters south of a line from a point west of Pirate Cove at 56°59.35' N lat, 135°22.63' W long, to the westernmost tip of Long Island at 56°59.98' N lat, 135°21.93' W long, to the easternmost tip of Long Island at 56°59.95' N lat, 135°20.37' W long, to the westernmost tip of Emgeten Island at 57°00.08' N lat, 135°20.01' W long, to the westernmost tip of Error Island at 57°00.54' N lat, 135°19.50' W long, to the westernmost tip of Berry Island at 57°00.32' N lat, 135°18.68' W long, to the southernmost tip of Berry Island at 57°00.28' N lat, 135°18.52' W long, to the westernmost tip of the southernmost island in the Kutchuma Island group at 57°00.14' N lat, 135°18.27' W long, to the easternmost tip of the southernmost island in the Kutchuma Island group at 57°00.06' N lat, 135°17.95' W long, to the westernmost tip of an unnamed island at 57°00.29' N lat, 135°17.66' W long, to a point on the southern side of the unnamed island at 57°00.07' N lat, 135°16.80' W long, to a point on the Baranof Island shore at 56°59.93' N lat, 135°16.53' W long, the troll fishery will be open on Saturday of each week and during those periods the net fisheries are closed, from 12:01 a.m., Saturday, June 1, through 11:59 p.m., Friday, September 20, unless closed by emergency order.

Waters of Deep Inlet south and east of a line from 56°59.09' N lat, 135°18.35 W long to 56°59.23' N lat, 135°18.25 W long will be closed to all common property harvest beginning June 1 to accommodate cost recovery operations. This area may reopen during the season based on the progression of cost recovery harvest. The 500-yard stream closure restrictions under 5 AAC 39.290(a)(2) are **not** in effect for Deep Inlet THA salmon streams (all freshwaters and stream channels remain closed).

From June 1 through June 15, the waters of the Deep Inlet THA west of 135°20.75' W long, are open continuously to troll gear as part of the THA, with waters east of 135°20.75' W long, open to troll gear when net fisheries are closed. On June 16, all waters of the Deep Inlet THA will follow the rotational schedule with troll openings occurring on Saturdays and during those periods when net gear is closed.

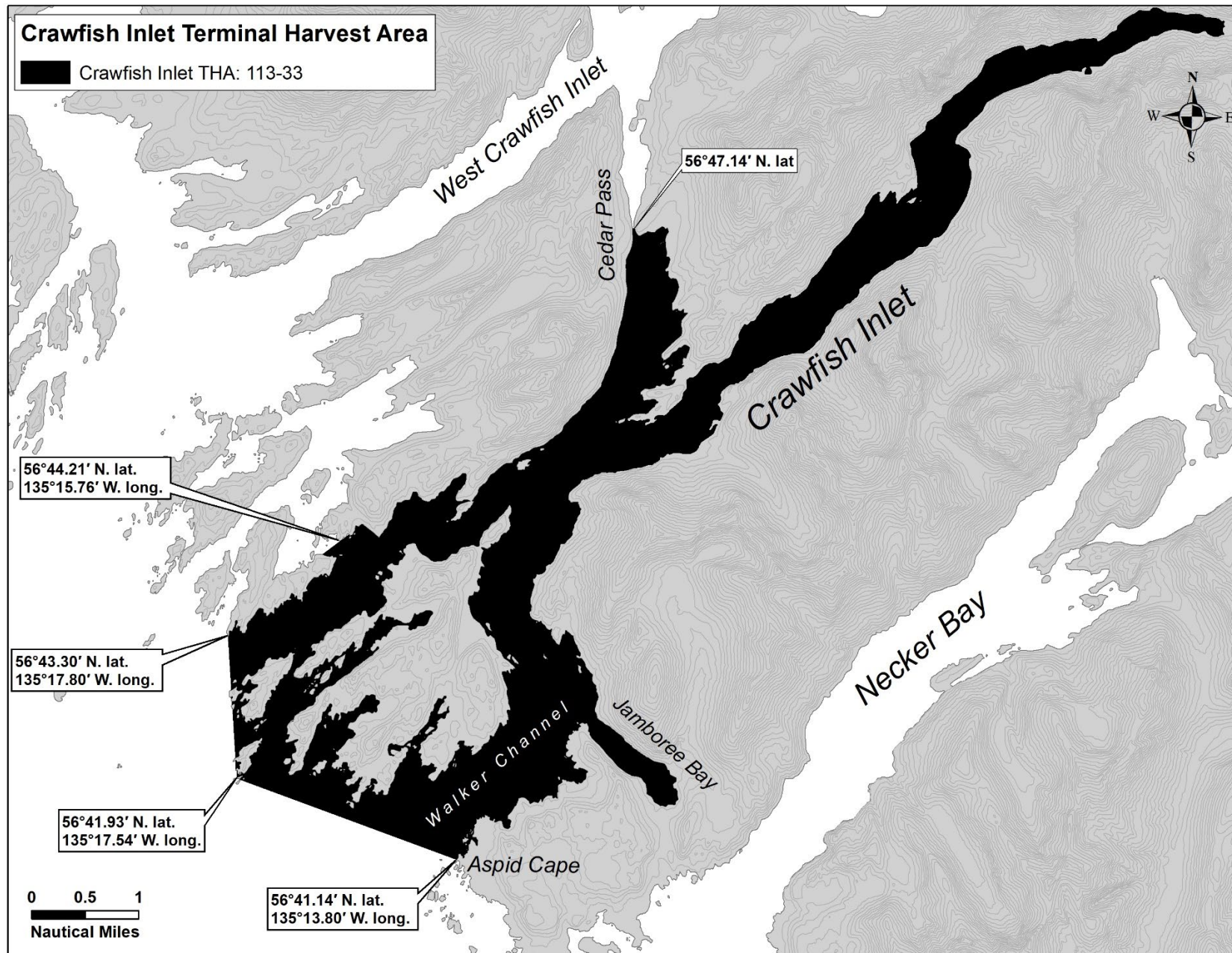


Figure 11.—Crawfish Inlet Terminal Harvest Area.

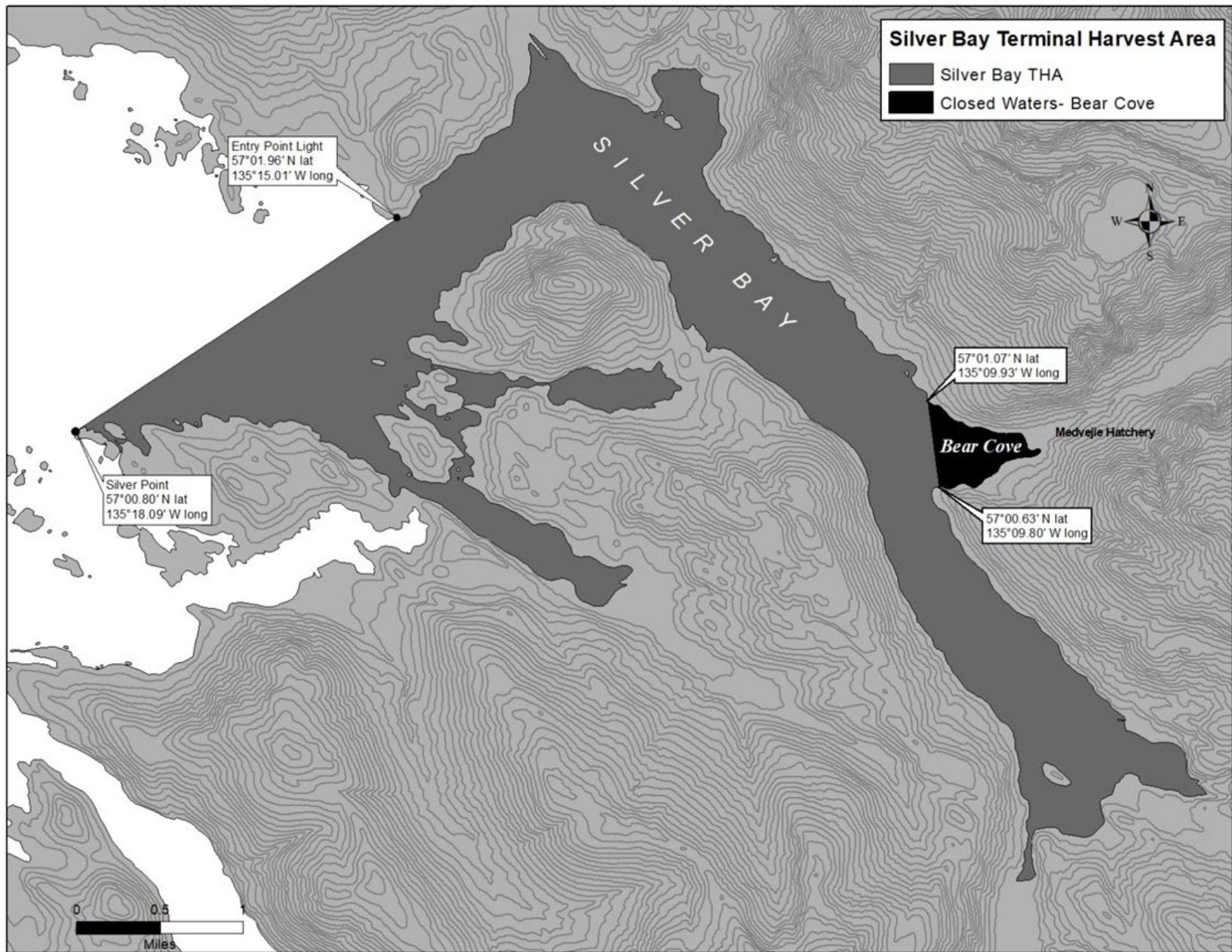


Figure 12.-Silver Bay Terminal Harvest Area.

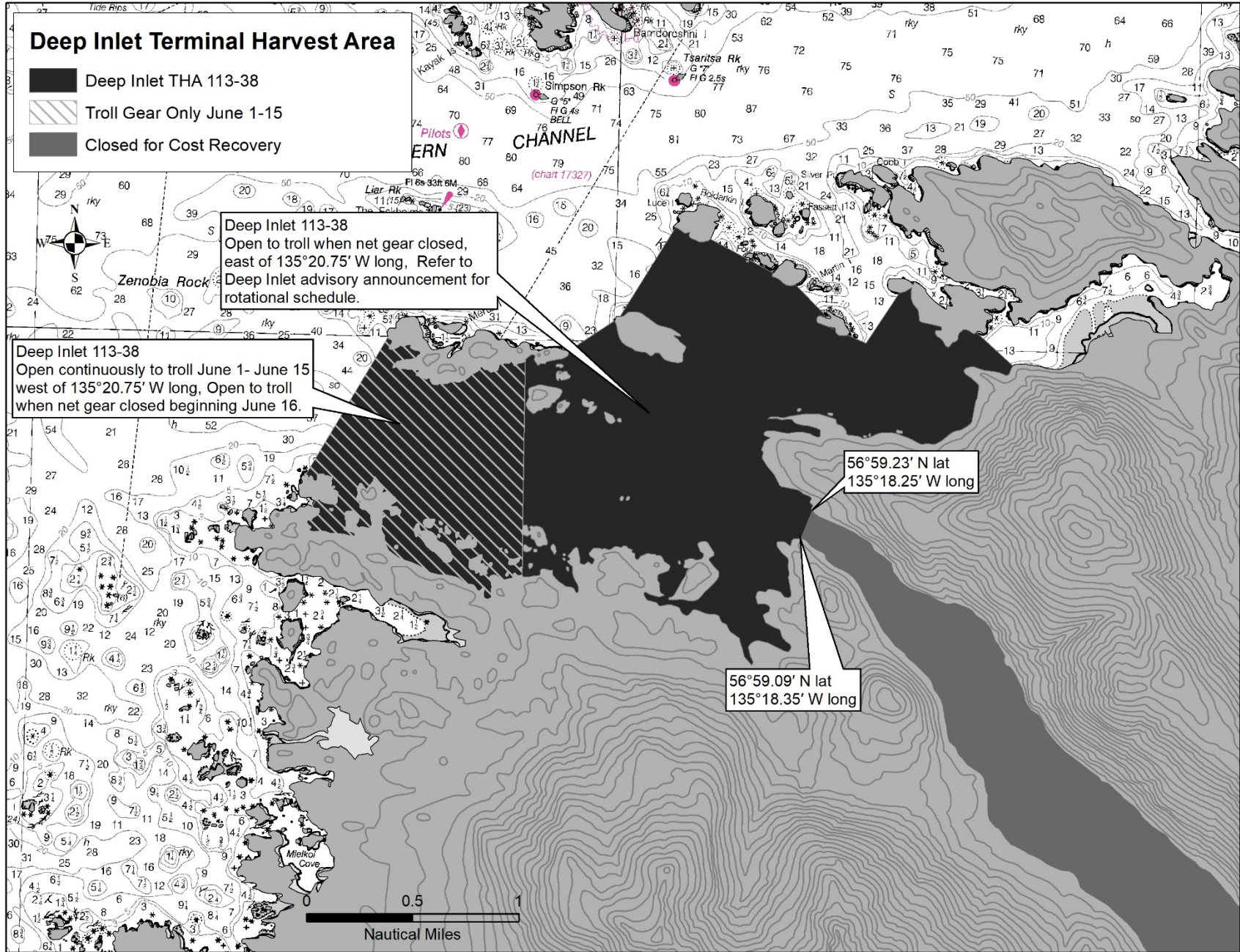


Figure 13.—Deep Inlet Terminal Harvest Area.

FISHERY CONTACTS

The following are Division of Commercial Fisheries contacts regarding this management plan:

Grant Hagerman
Troll Management Biologist
304 Lake Street, #103
Sitka, Alaska 99835
(907) 747-6688

Troy Thynes
Regional Management Coordinator
P. O. Box 667
Petersburg, Alaska 99833
(907) 772-3801

Mike Vaughn
Assistant Troll Management Biologist
304 Lake Street, #103
Sitka, Alaska 99835
(907) 747-6688

Anne Reynolds Manney
Southeast Alaska Regional Supervisor
2030 Sea Level Drive Suite 205
Ketchikan, Alaska 99901
Phone: (907) 228-3013
Mobile: (907) 209-9984

For updated information on the troll fishery, call the 24-hour information line in the Douglas (907) 465-TROL (8765), Sitka (907) 747-8765, or Ketchikan (907) 225-6870.

SOUTHEAST ALASKA TROLL WEBSITE INFORMATION:

<https://www.adfg.alaska.gov/index.cfm?adfg=commercialbyareasoutheast.salmon#harvest>