

Districts 6 and 8 Drift Gillnet Fisheries 2021 Postseason Report

Paul Salomone

ADFG

December 2021



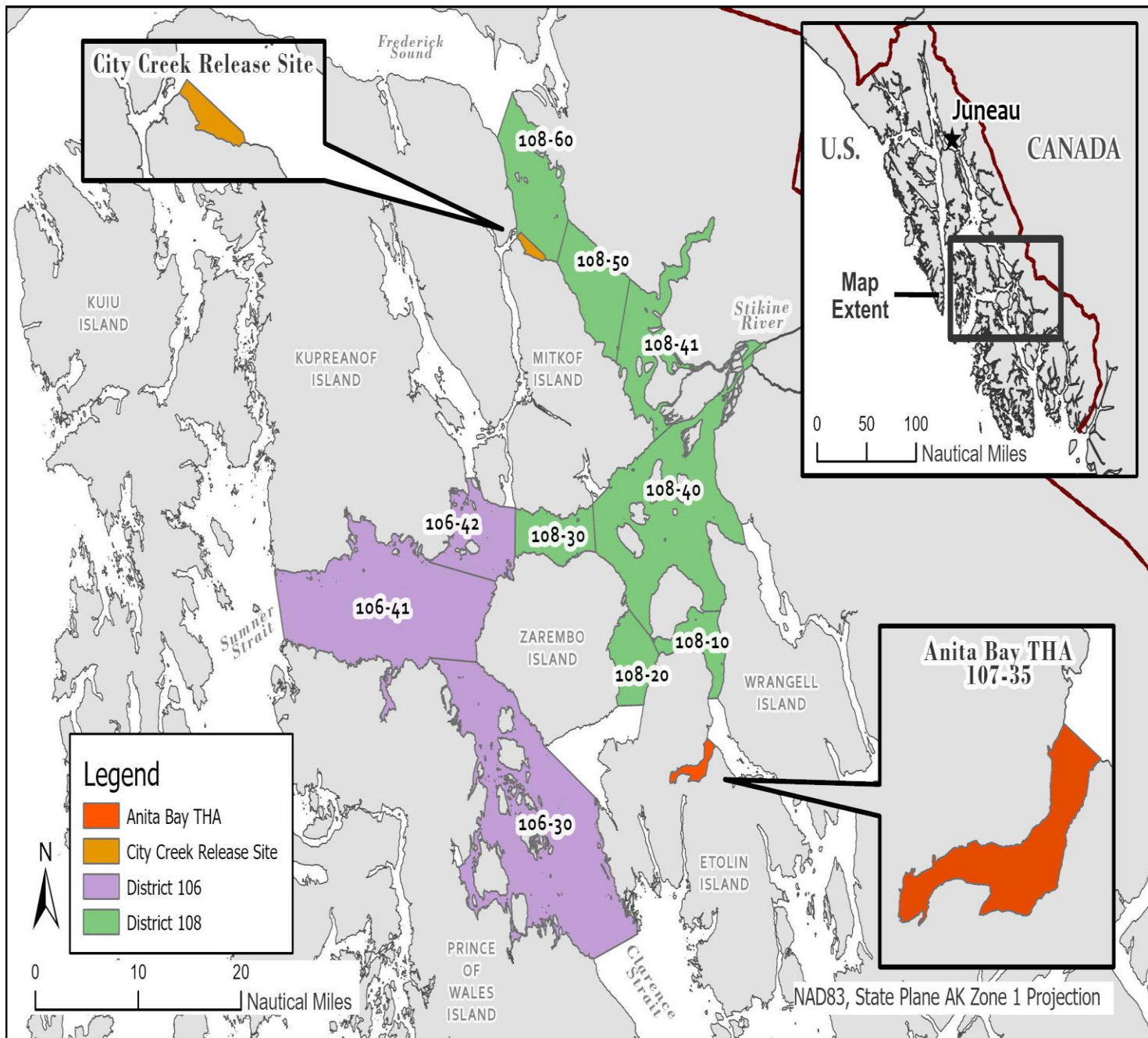
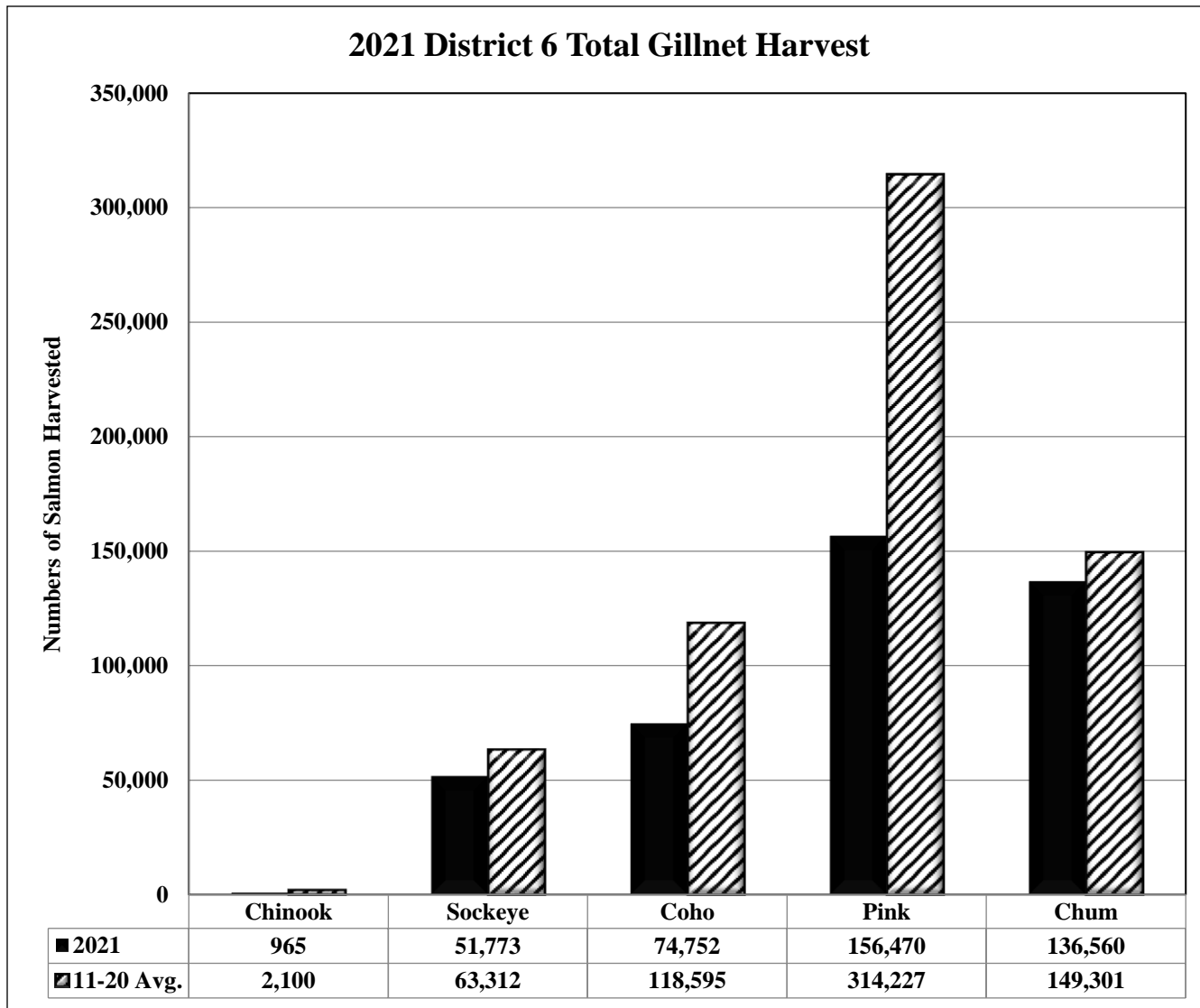


Figure 1.

Figure 2.



- Chinook, coho, and pink salmon well below average
- Sockeye and Chum salmon harvest near average



District 6 Preliminary Stock Composition

- Chinook Salmon
 - Estimated Alaska hatchery of 641 fish or 66% of harvest (CWT)
- Sockeye Salmon
 - Estimated from XXX Stikine River fish or XX% of harvest (Otolith)
 - XX fish from 106-41, XX% of harvest
 - XX fish 106-30, XX% of harvest
- Coho Salmon
 - Estimated Alaska hatchery of 24,386 fish or 33% of harvest (CWT)
- Chum Salmon
 - Estimated Alaska hatchery of 92,000 fish or 69% of harvest (Otolith)



Figure 3a.

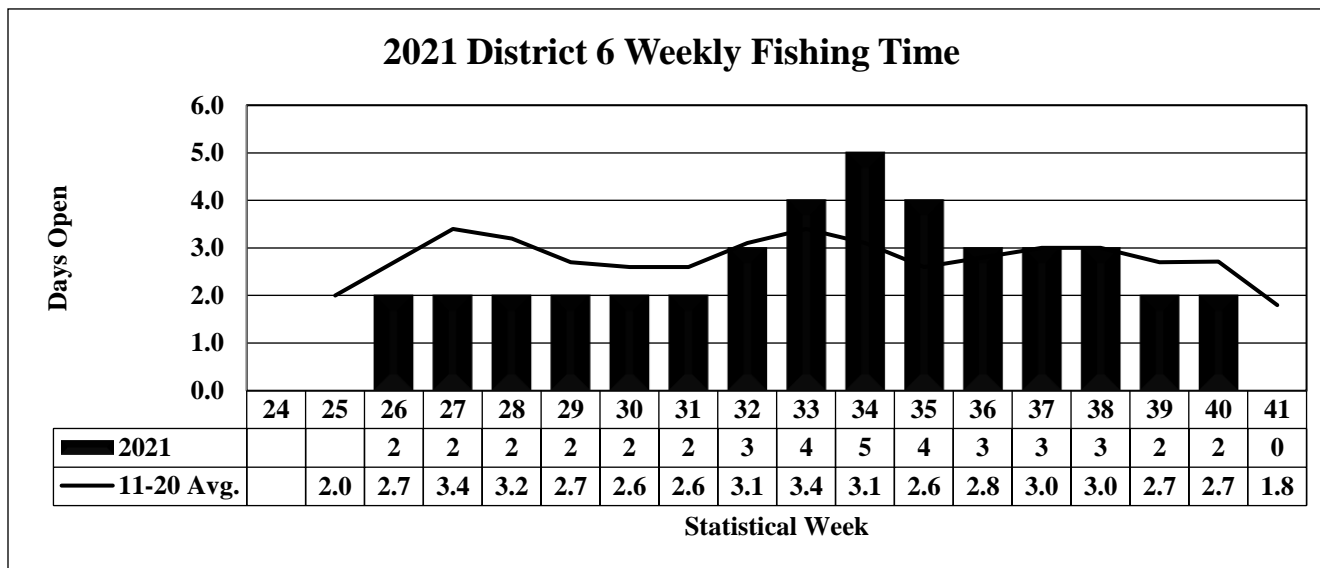


Figure 3b.

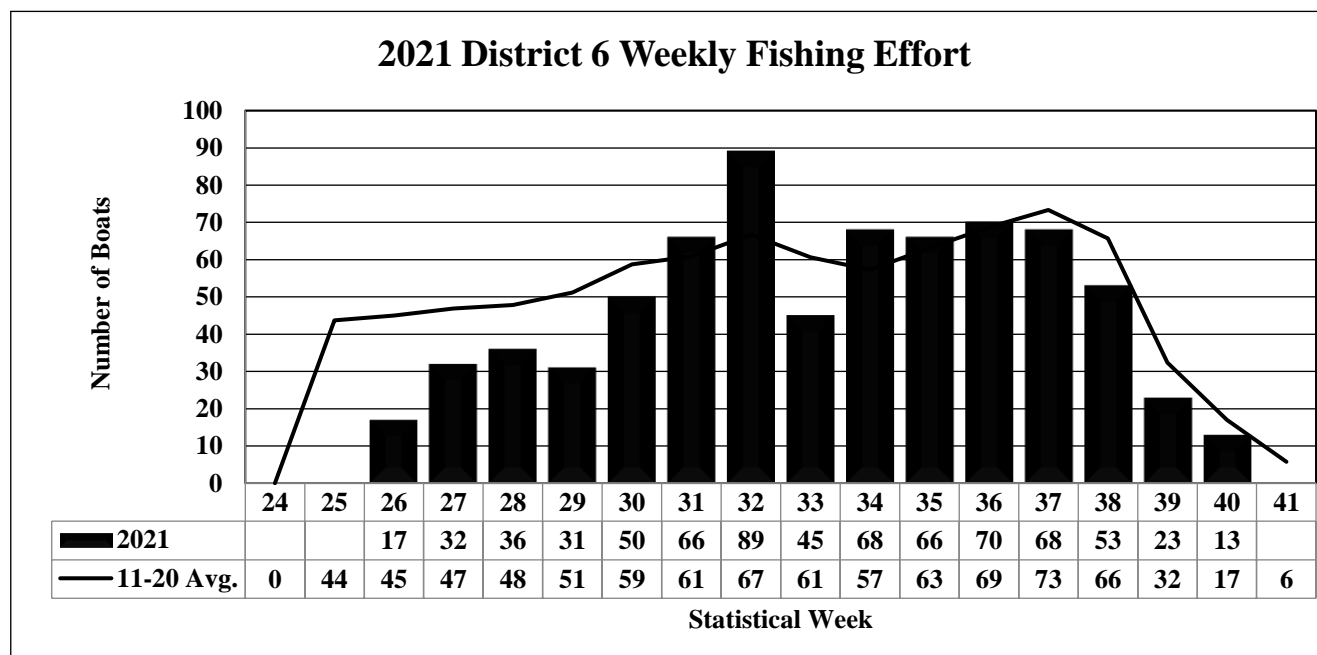
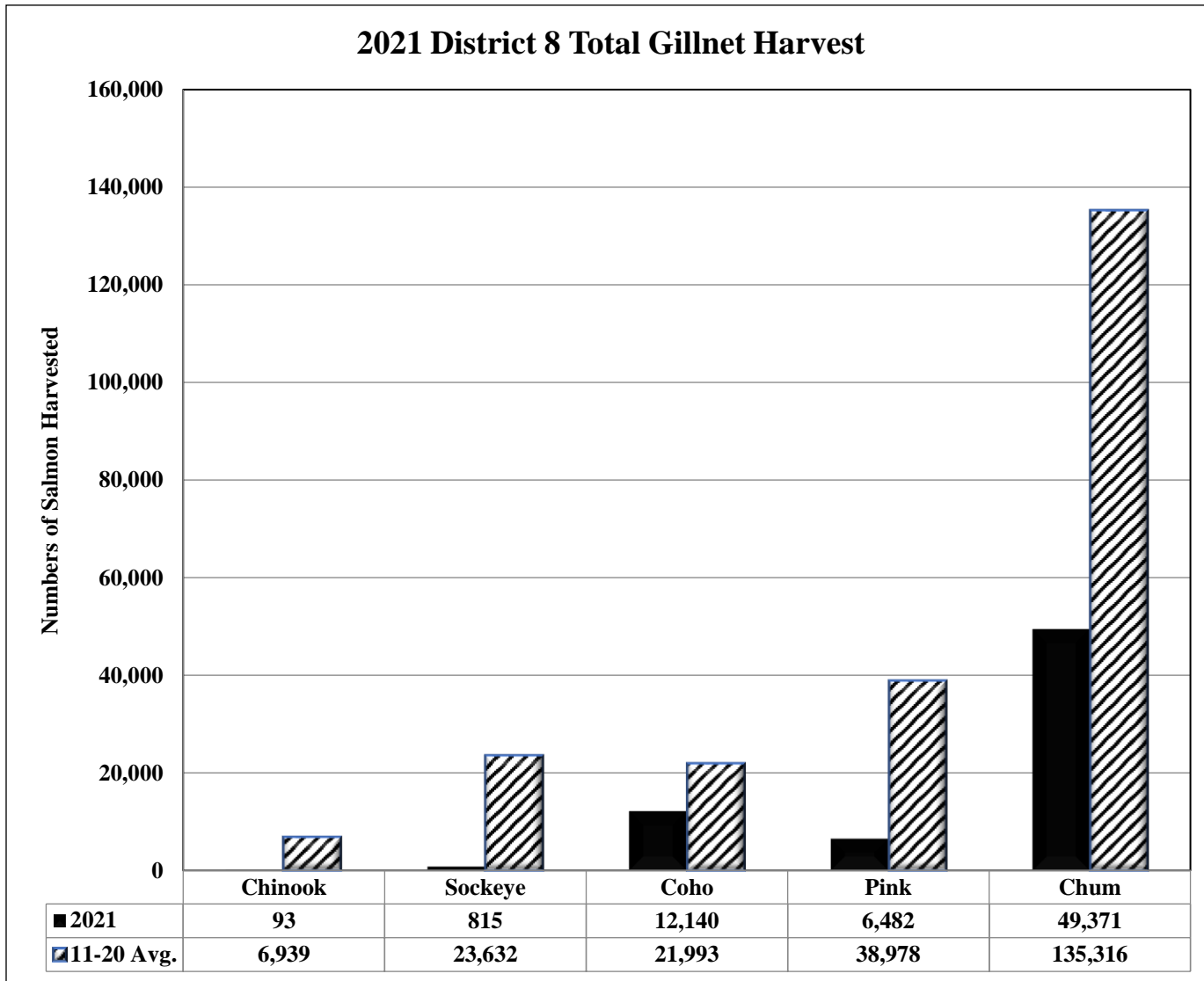


Figure 4.



- Harvest for all species well below average



District 8 Preliminary Stock Composition

- Chinook Salmon
 - Estimated Alaska hatchery of 37 fish or 40% of harvest (CWT)
- Sockeye Salmon
 - Estimated **XXX Stikine River fish or XX%** of harvest
- Coho Salmon
 - Estimated Alaska hatchery of 2,887 fish or 24% of harvest (CWT)
- Chum Salmon
 - Estimated Alaska hatchery of 4,300 fish or 87% of harvest (Otolith)



Figure 5a.

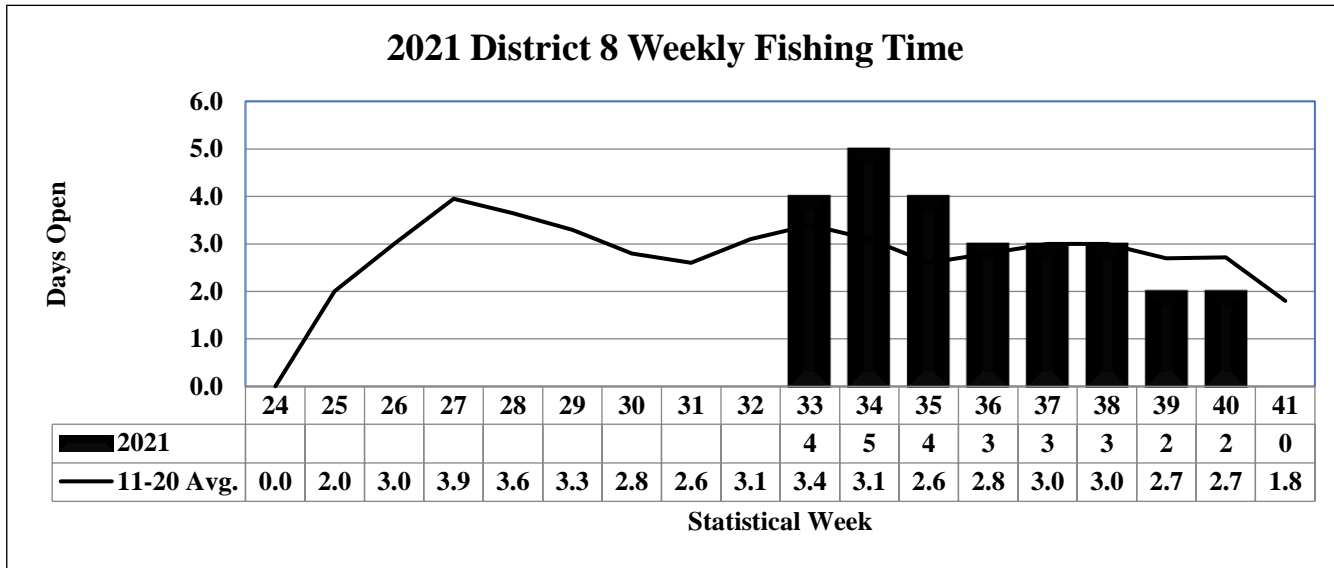
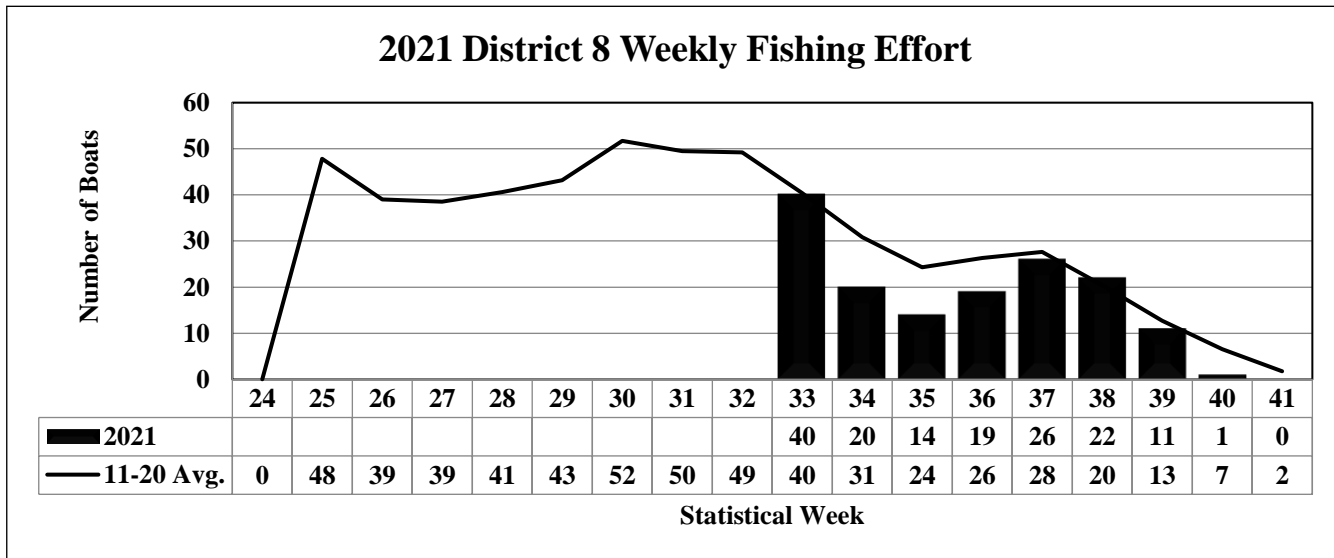


Figure 5b.



Anita Bay Gillnet and Statistical Areas 108-10 & 20 Gillnet Chum Salmon Harvest, 2011-2021

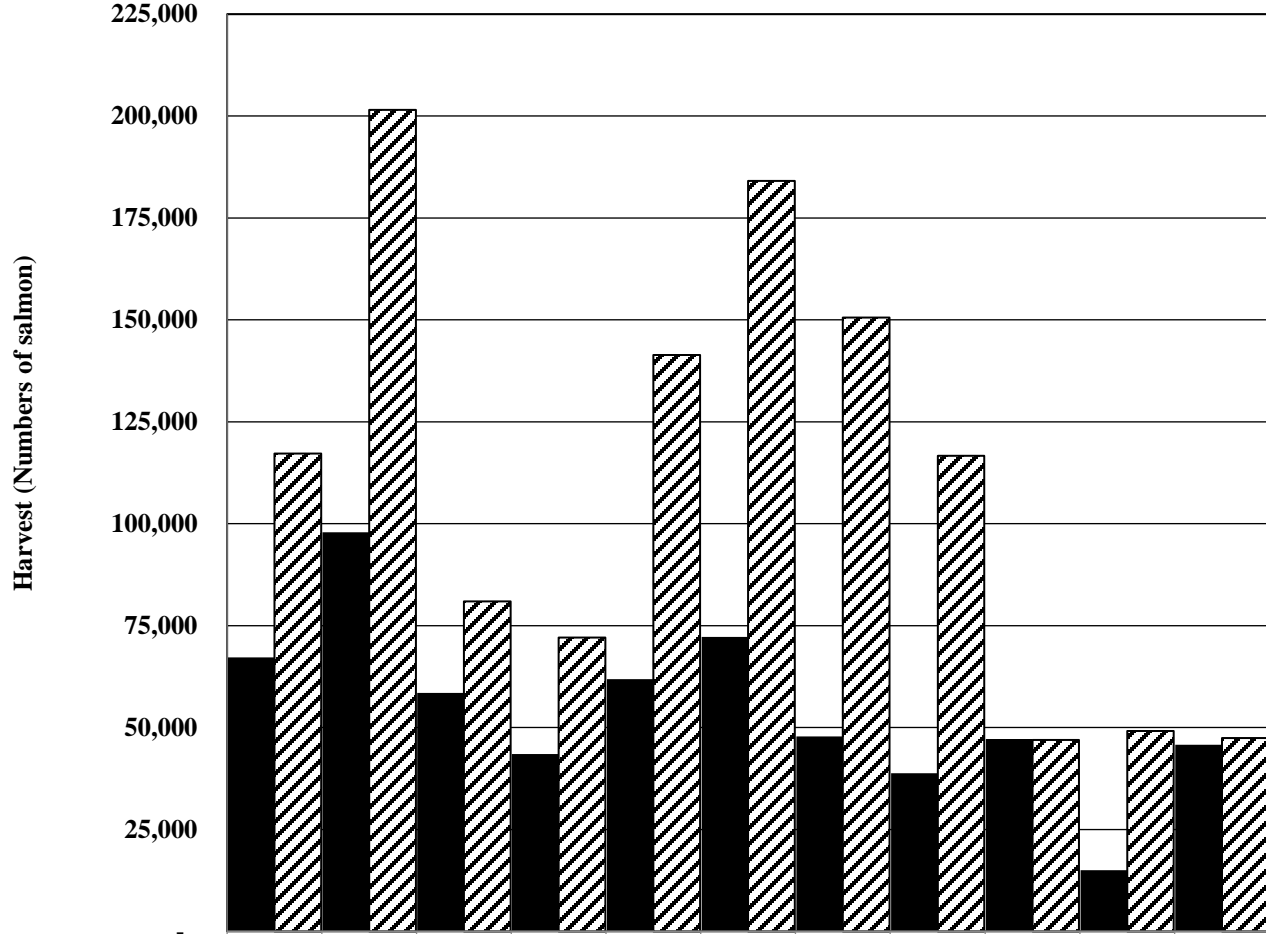


Figure 6.

■ Anita Bay Drift Gillnet	67,183	97,874	58,456	43,488	61,881	72,204	47,782	38,786	47,149	15,034	45,736
▨ District 108-10&20 GN	117,22	201,53	80,965	72,067	141,42	184,09	150,57	116,64	46,972	49,154	47,398



District 8 Chinook Salmon

- Preseason forecast of 9,900 large Stikine Chinook salmon. Inseason projections were below 10,000
- No AC, Conservation measures implemented in all U.S. fisheries.
 - Gillnet
 - Delayed opening until SW 33
 - Maximum mesh size of 6 inches for season
 - Troll
 - Spring troll fisheries did not open in 2021
 - Non-retention of Chinook salmon for the first summer troll opening
 - Sport
 - Chinook salmon non-retention period from April 1 through July 15
 - Bag and possession limit was 2 (1 in City Creek release area) fish for residents and nonresidents
 - Subsistence
 - Did not open until June 21
- Postseason Stikine Chinook salmon run size estimate: around 10,000 fish
 - Estimated escapement: less than 10,000 fish
 - Gillnet harvest of 0 large Stikine River Chinook salmon through SW29 (fishing closed).



District 8 SW's 18-29 Harvest of Large Stikine Chinook Salmon, 2011-2020 (Gillnet and Sport Harvest estimated by GSI)

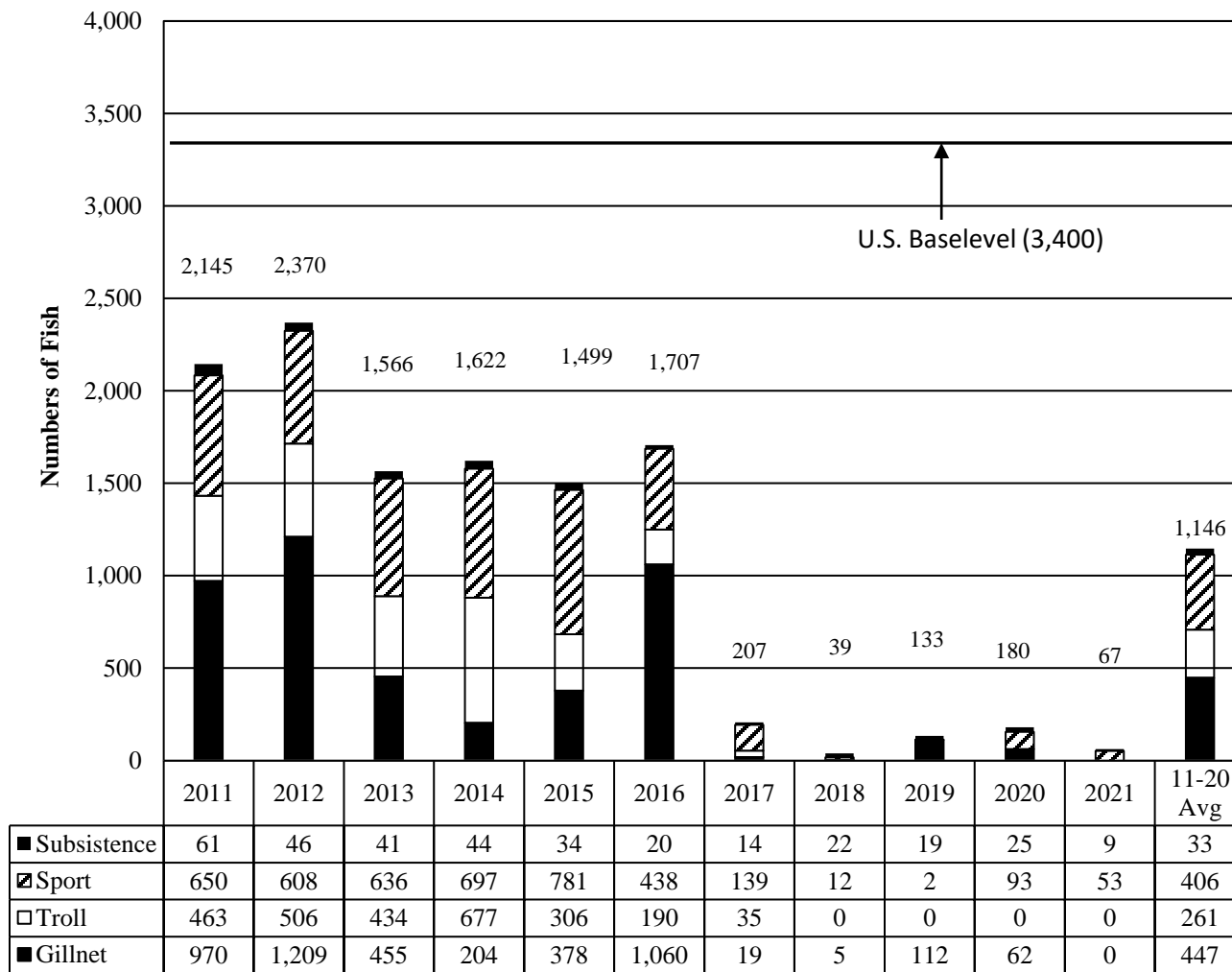
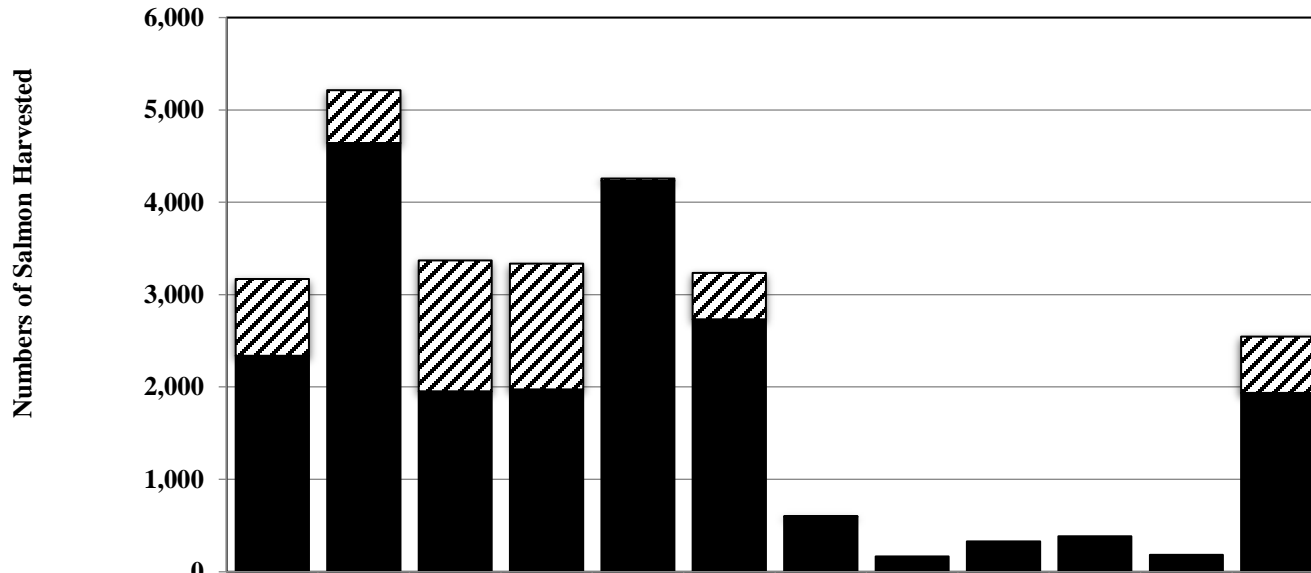


Figure 8.



2011-2021 Canadian Total Harvest of Large Stikine Chinook Salmon



	2011	2012	2013	2014	2015	2016	2017	2018	2019	2020	2021	11-20 Avg
▨ Test Fishery	834	573	1,417	1,361	25	503	10	-	-	-	-	610
■ Commercial, Food, Sport	2,336	4,642	1,954	1,974	4233	2,731	593	165	327	383	182	1,934

Figure 9.



Stikine River Chinook Salmon Harvest and Escapement, 2011-2021

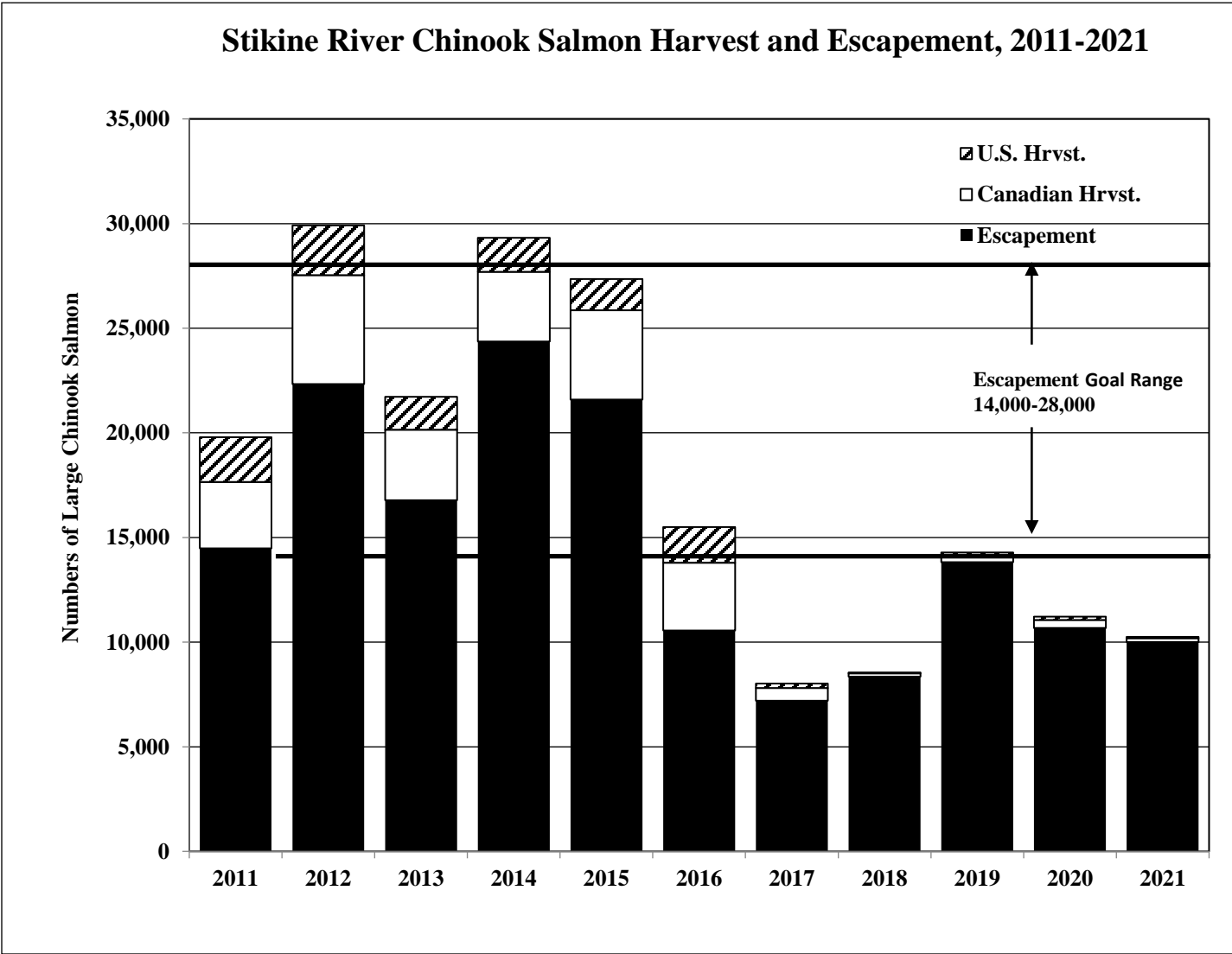


Figure 10.



Sockeye Salmon Management

- Weeks 26 through 32 (June 20–August 7)
- District 6 Chinook salmon conservation
 - Delayed opening for one week (SW 26)
 - Restricted to two days in SW 26-29
 - 6-inch maximum mesh restriction in affect through SW 29
- District 6 Sockeye salmon conservation
 - Restricted to two days: SWs 29-32 MacDonald Lake action plan
- District 8 Sockeye salmon conservation
 - Closed until SW-33
 - Opened in SW-33 because of pink salmon abundance
- Stikine sockeye below average, local stocks below to near average sockeye salmon abundance
 - District 6 harvest 51,700 SW 26-37 (19,200 SW 26-32)
 - District 8 harvest 800 (SW 33-37)



Stikine Sockeye Salmon

- Preseason Forecast: 56,000 fish (28,000 Tahltan, 28,000 mainstem)
 - Harvest Share Changed in 2019 from 50/50% TO 53% U.S., 47% Canada
 - U.S. AC 2,100 fish (all Tahltan, no AC for mainstem)
- Preliminary postseason run size (will change with GSI)
 - Tahltan terminal run~53,300 fish, mainstem estimated at ~30,000 U.S. AC ~15,400 fish
 - Preliminary U.S. Harvest 7,000 Stikine origin sockeye (5,700 in commercial gillnet fishery and 1,200 in Federal Stikine subsistence fishery)
 - Canada Harvest 4,700 Stikine origin sockeye (4,100 FN, 600 incidental in directed coho fishery)



Figure 12a.

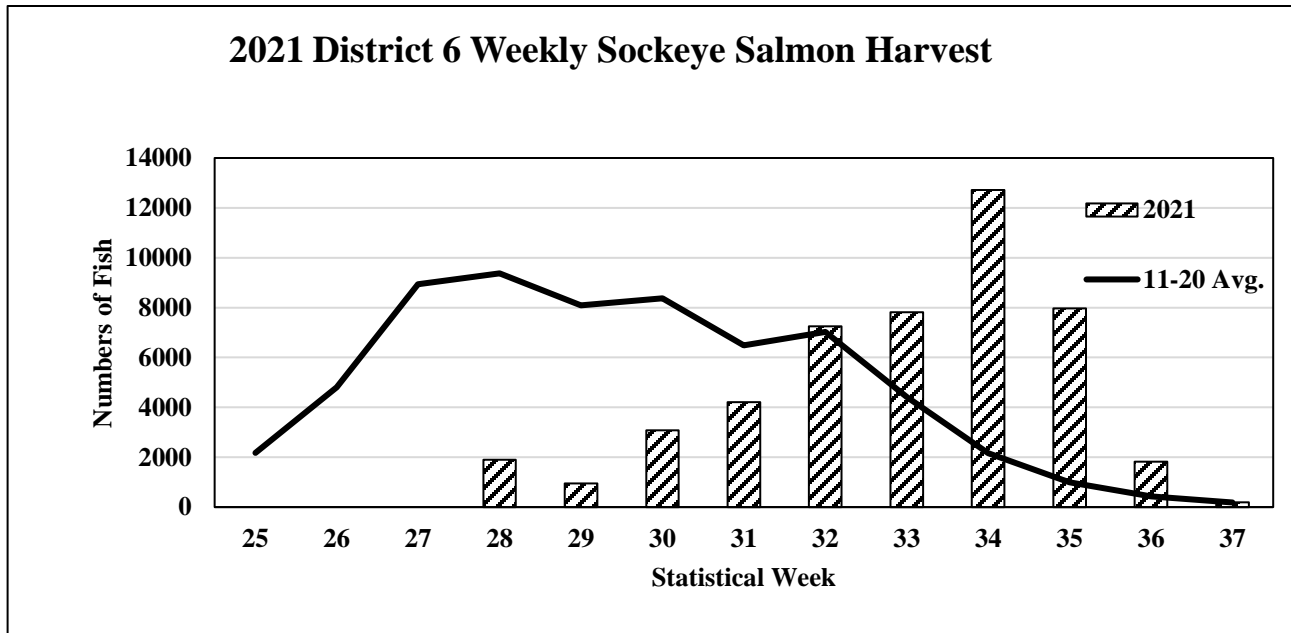
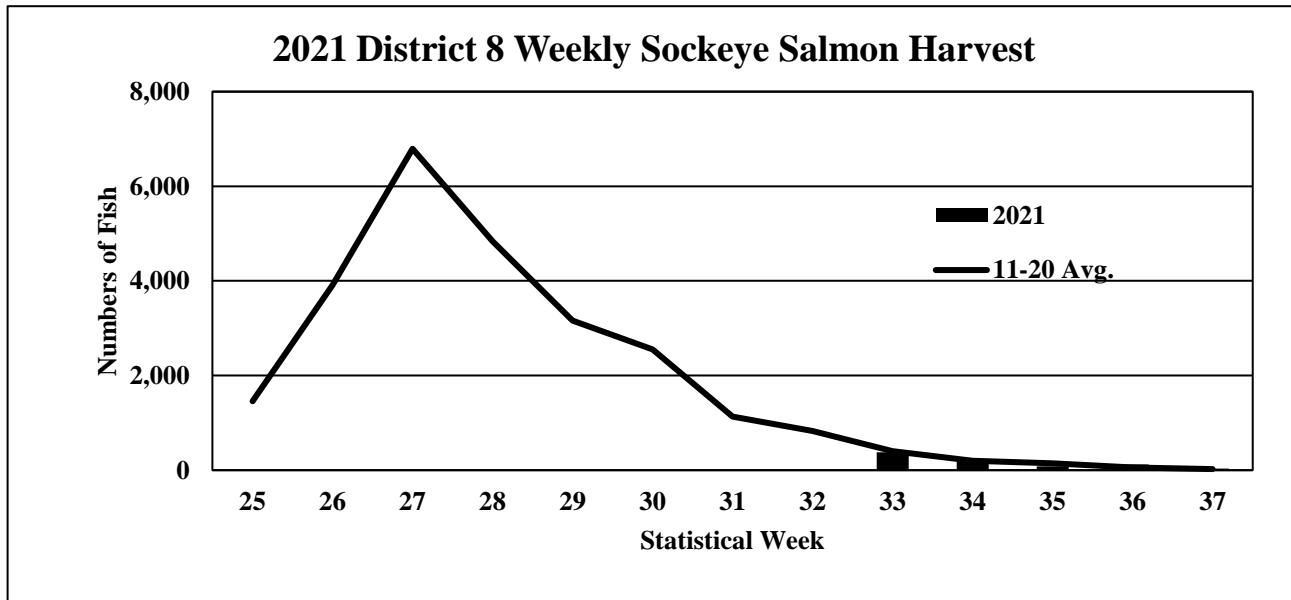


Figure 12b.



Sockeye Salmon Escapement

- Stikine
 - Tahltan Lake escapement: 43,200 (above 18,000-30,000 goal range)
 - Mainstem: XX (20,000-40,000 goal range)
- Island Stocks
 - Poor to average but improved over 2020
- McDonald Lake
 - 44,000 escapement much improved over 2020 (8,200) but still below 55,000-120,000 goal range



Pink Salmon Management

- Weeks 33 through 35 (August 8–August 28)
- District 6
 - Effort below average
 - Pink salmon harvest below average
- District 8
 - Effort below average
 - Pink salmon harvests and harvest rates below average
- Stock group escapement slightly over target range



Figure 13a.

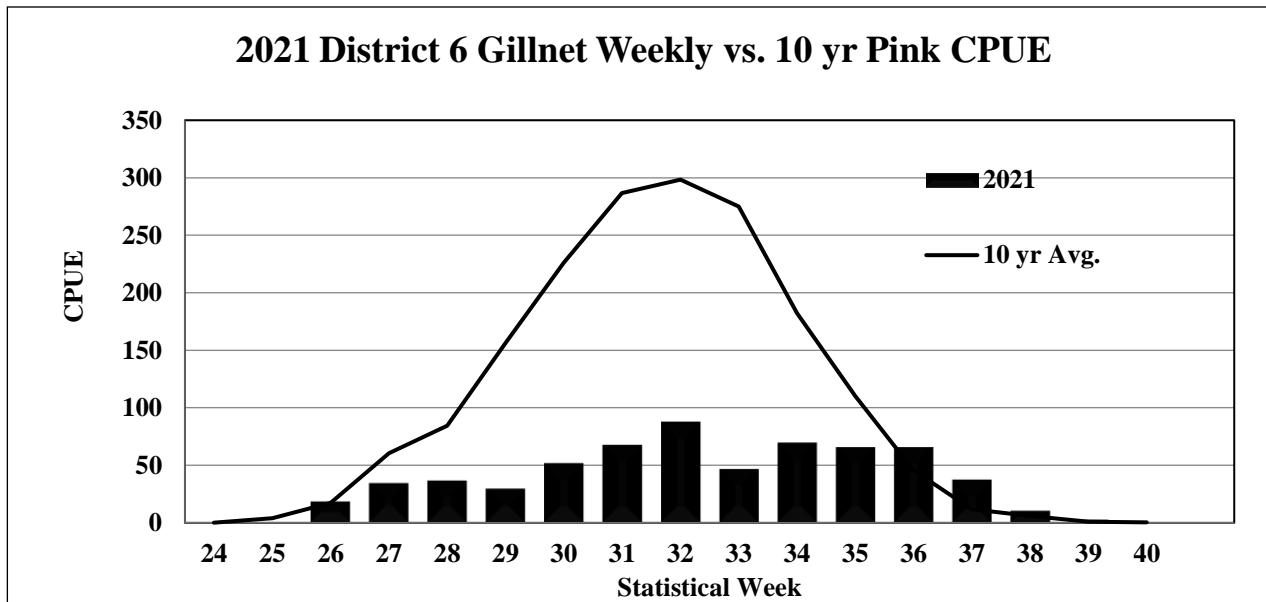
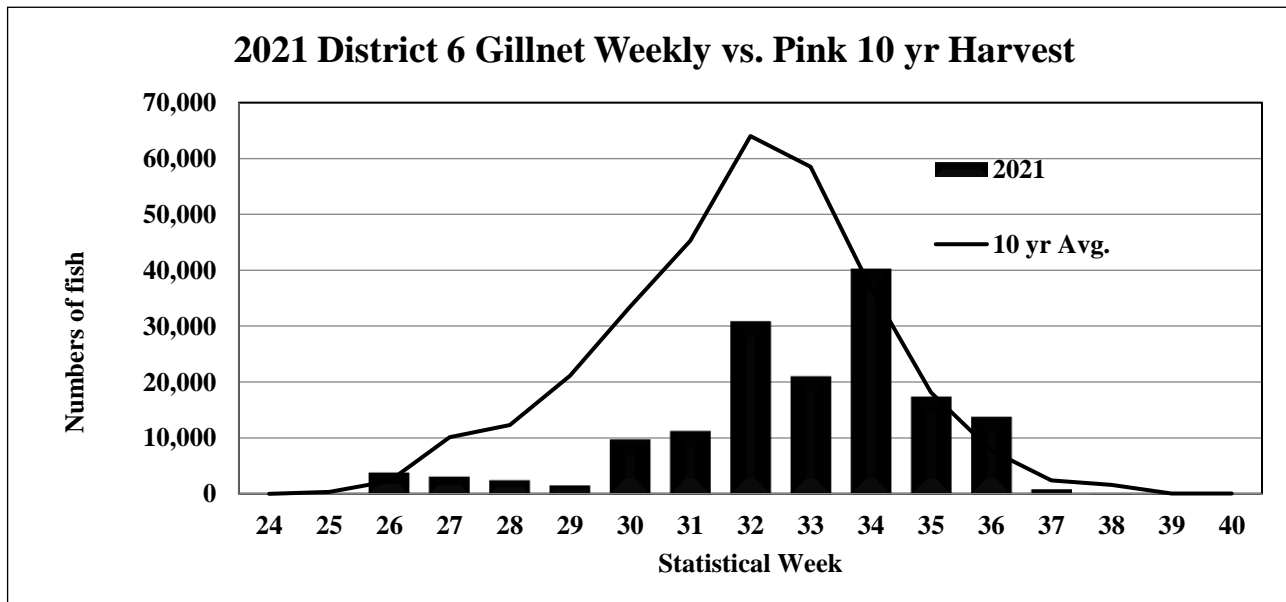


Figure 13b.

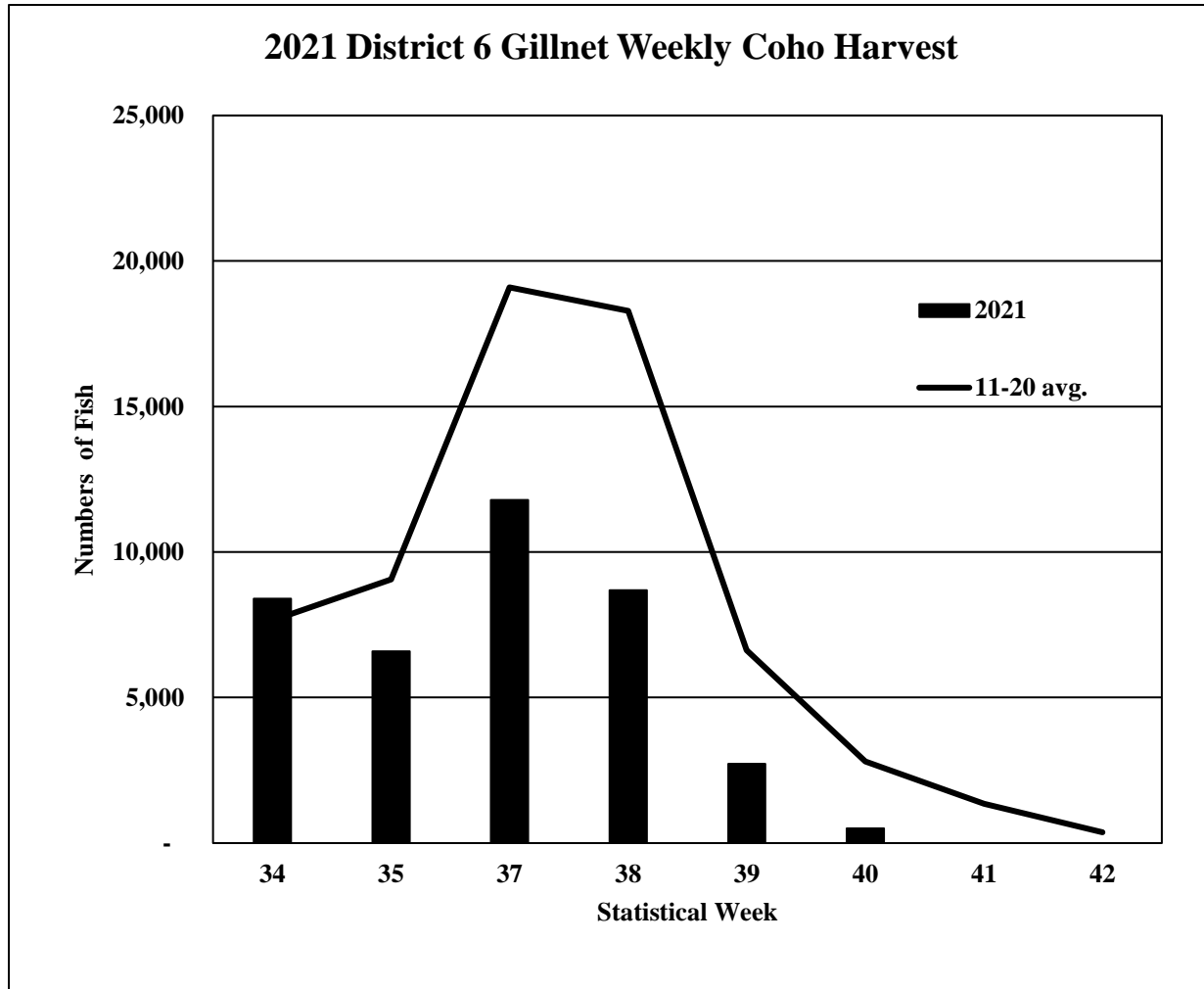


Coho Salmon Management

- Weeks 36 through 40 (August 29 – October 2)
- District 6
 - Well below average effort
 - Coho salmon harvest well below average
 - Variable harvest rates
 - Average run timing
- District 8
 - Above average effort
 - Coho salmon harvest above average
 - Harvest rates were variable
 - Run timing average to late



Figure 14



District 6 Weekly Gillnet Coho Salmon Hatchery and Wild CPUE, 2021 vs 11-20 Avg.

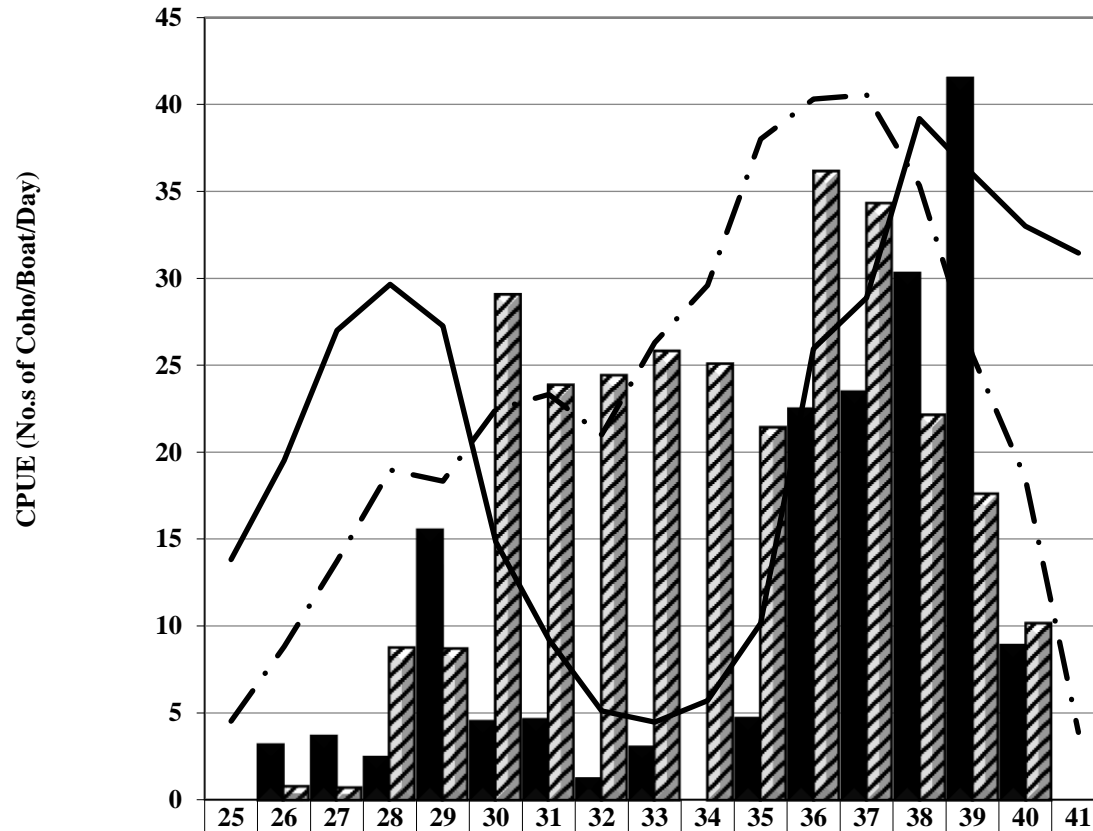
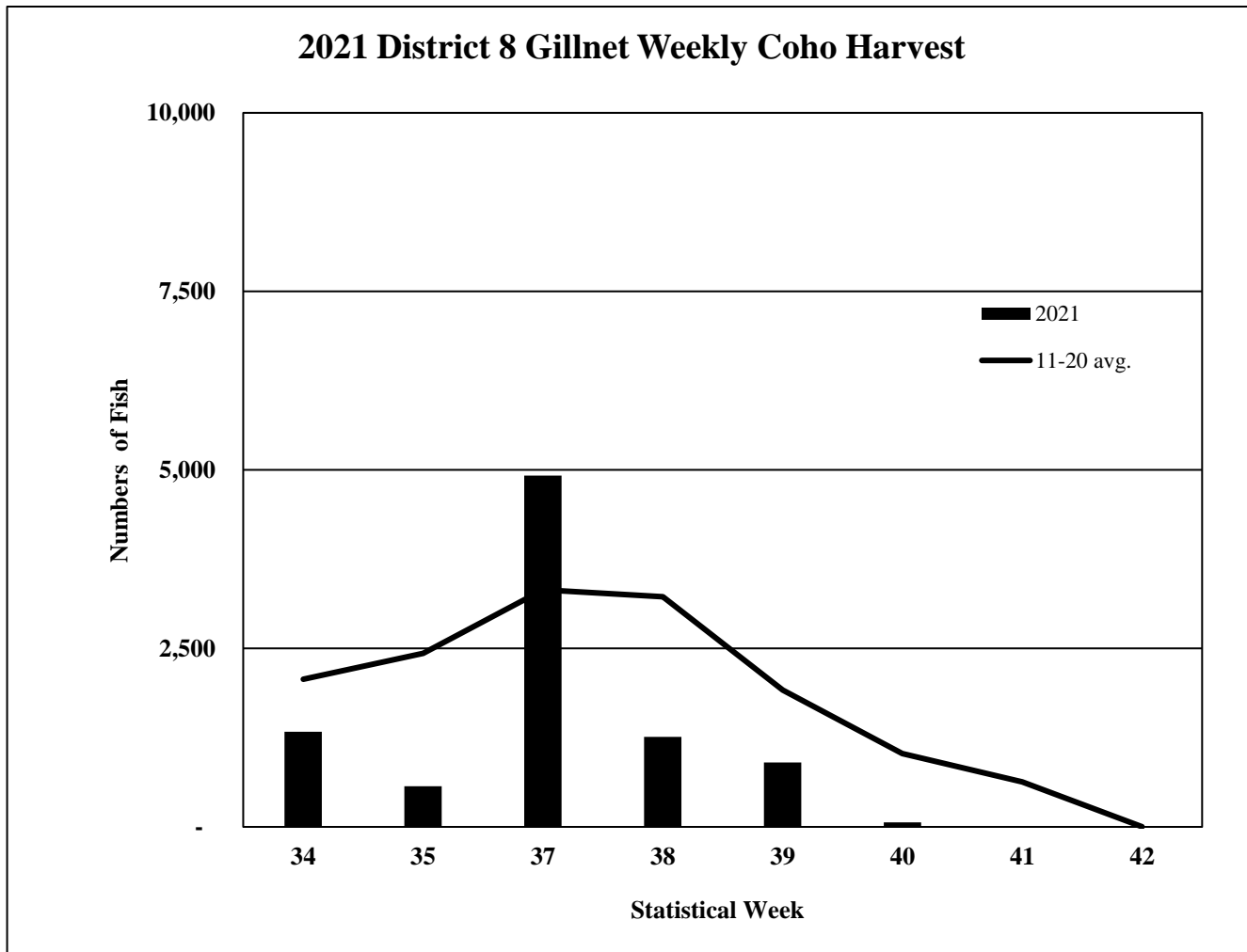


Figure 15.



Figure 16.



District 8 Weekly Gillnet Coho Salmon Hatchery and Wild CPUE, 2021 vs 2011-2020 Avg.

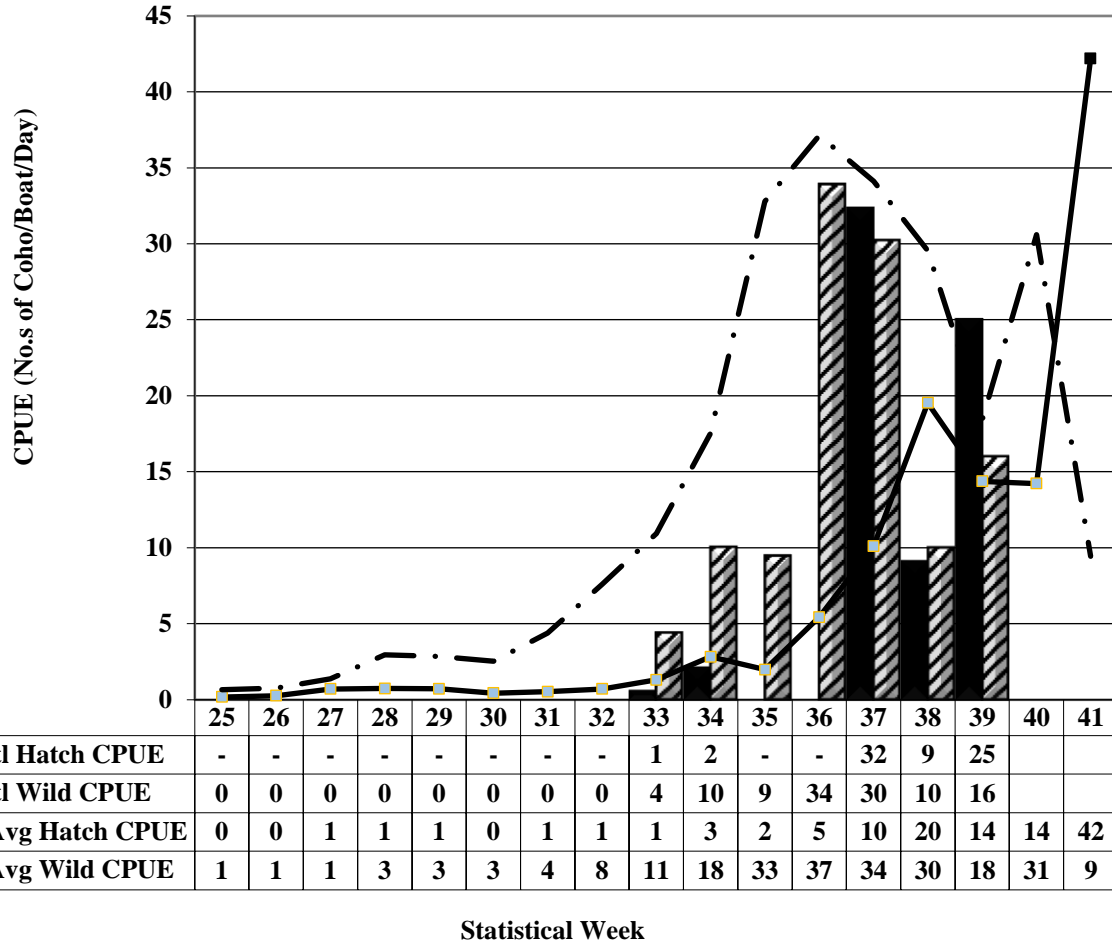


Figure 17



2022 Expectations

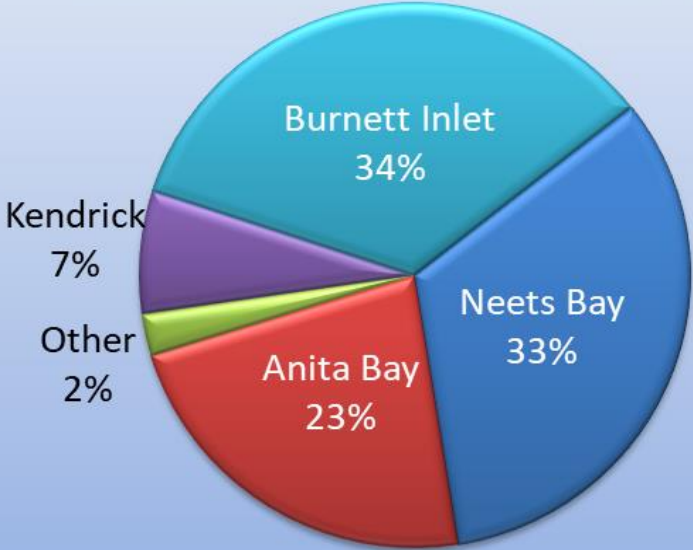
- Stikine Chinook salmon: Preseason forecast: **??XXX fish??**
 - Conservation measures likely in place for start of gillnet season
- Sockeye salmon:
 - Stikine Sockeye salmon: **??**
 - Preliminary Forecast produced in February/March
 - Parent year escapements within goal ranges
 - Island Stocks: Parent year escapements average
 - McDonald Lake
 - Parent year escapement poor
- Pink Salmon:
 - Parent year escapements within goal ranges for both districts



Questions?



2020 District 6 Chum Salmon Hatchery Composition



2020 District 8 Chum Salmon Hatchery Composition

