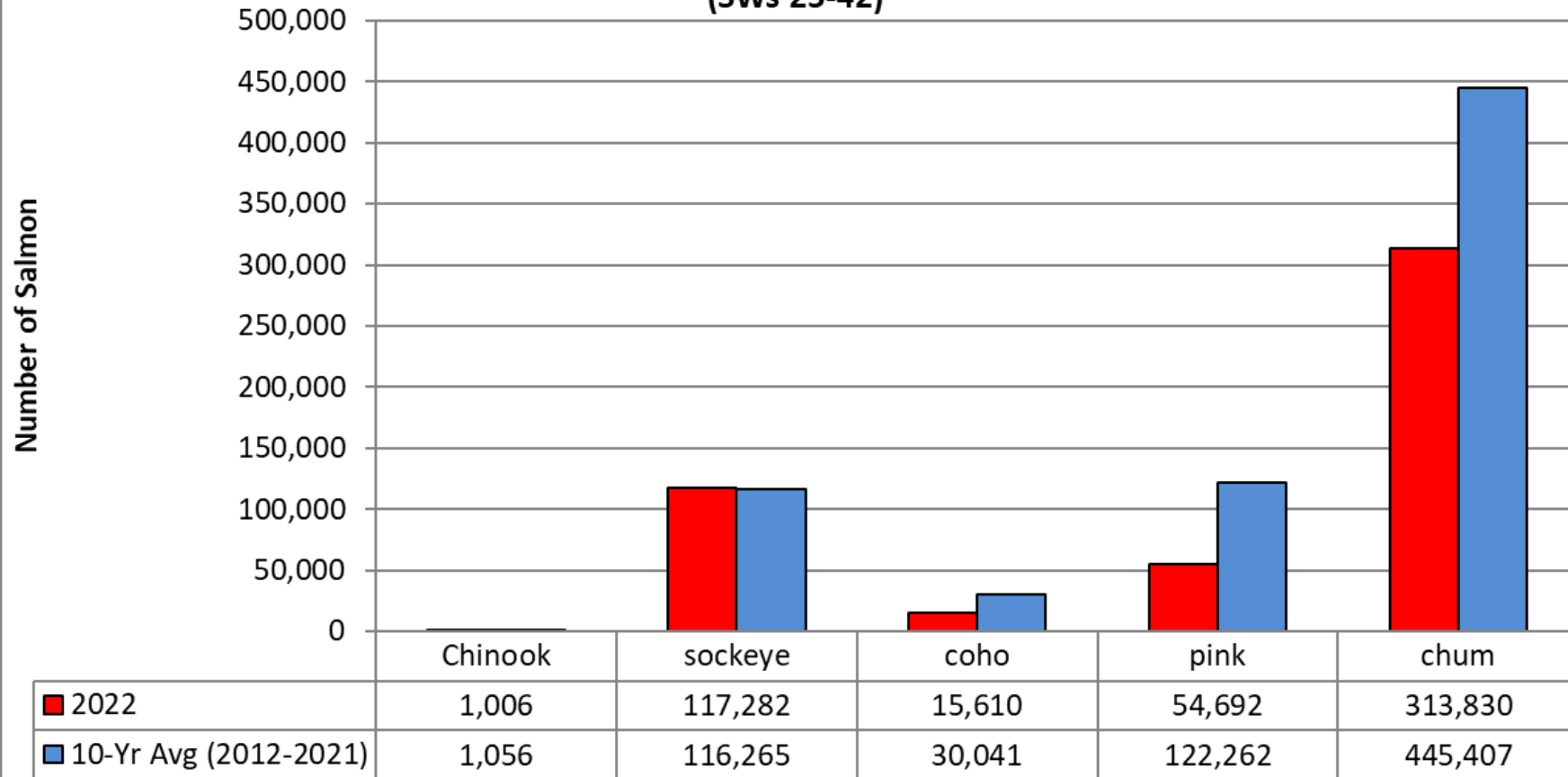


District 11 Drift Gillnet Fishery Taku Inlet, Stephens Passage, and Port Snettisham 2022 Management Summary



Scott Forbes
Drift Gillnet Task Force Meeting
November 29, 2022
Ted Ferry Civic Center
Ketchikan, AK

2022 District 11 Drift Gillnet Fishery Harvest and 10-Year Average (SWs 25-42)

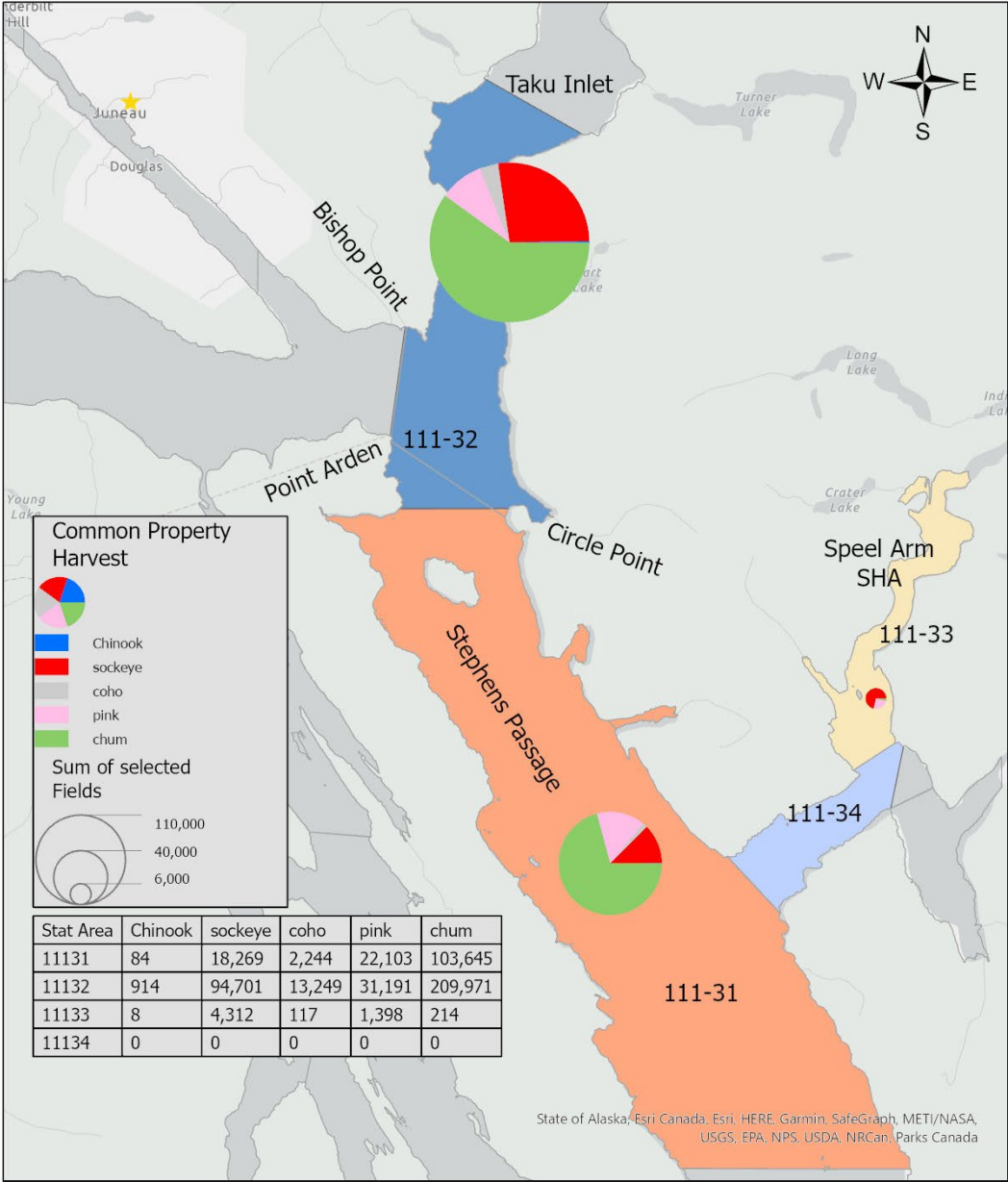


2022 District 11 Drift Gillnet Fishery Weekly Time, Effort, and Harvest

	Stat Week	Days Open	Boats	Boat Days	Chinook	Sockeye	Coho	Pink	Chum
Sockeye Management	26	2	27	54	129	355	8	0	1,378
	27	2.4	36	86	303	3,925	11	4	10,466
	28	3	54	162	265	8,895	16	604	20,358
	29	4	46	184	101	12,411	197	2,571	51,645
	30	5	90	450	74	26,039	661	11,260	114,570
	31	5	99	495	53	34,689	1,239	18,336	67,035
	32	5	49	245	42	17,595	581	11,763	40,055
Coho Management	33	4	35	140	24	7,421	1,115	8,032	6,981
	34	3	27	81	8	4,899	392	1,961	511
	35	3	15	45	1	769	2,708	153	295
	36	3	20	60	1	178	2,493	8	213
	37	3	17	51	2	89	2,576	0	155
	38	2	16	32	0	15	2,688	0	155
	39/40	3	10	18	3	2	925	0	13
	41	closed							
	Fishery Total	47.4	132	2,103	1,006	117,282	15,610	54,692	313,830
10-Yr Avg (2012-2021)	51	180	2,805	1,056	116,265	30,041	122,262	445,407	
2022 % Avg (SWs 25-42)	93%	73%	75%	95%	101%	52%	45%	70%	



2022 District 11 Drift Gillnet Harvest by Species (SWs 25-40)

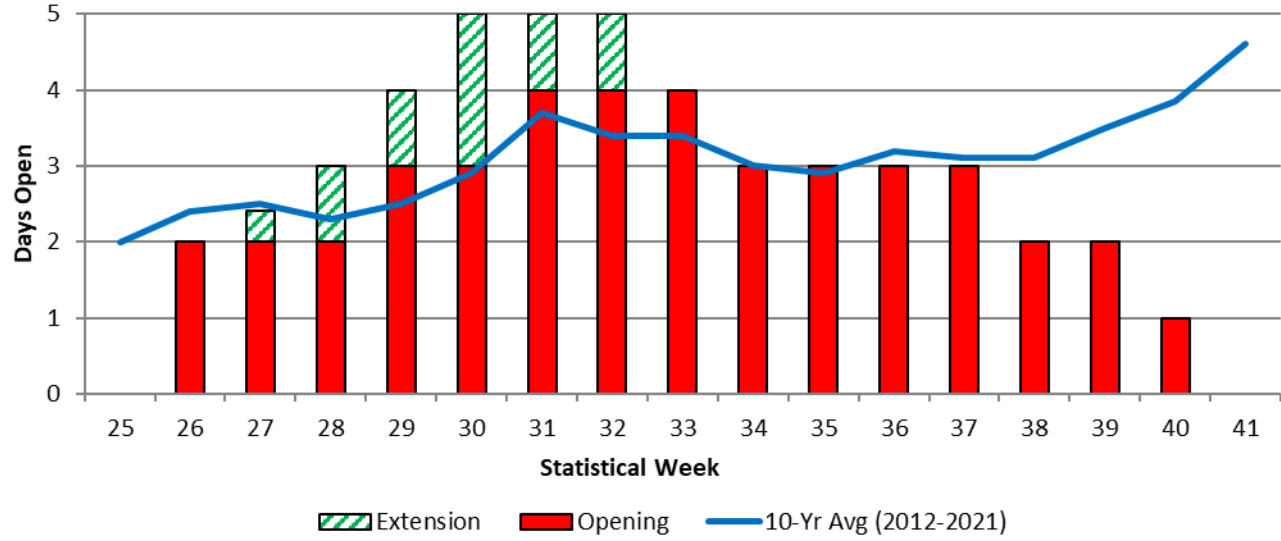


State of Alaska, Esri, Canada, Esri, HERE, Garmin, SafeGraph, METI/NASA, USGS, EPA, NPS, USDA, NRCan, Parks Canada

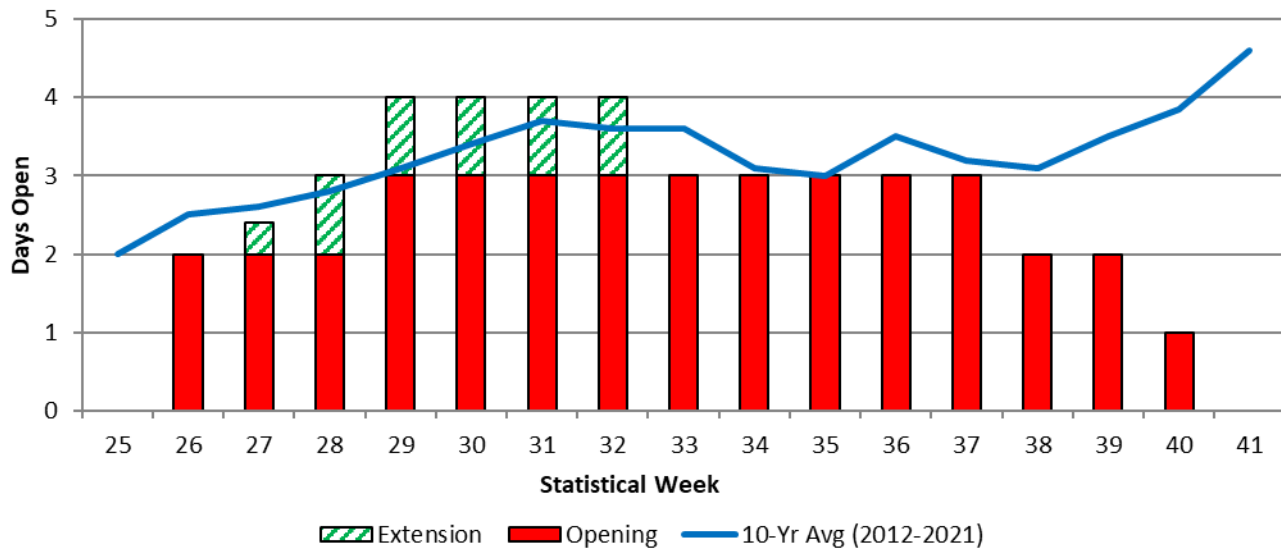
0 5 10 20 Miles



2022 Taku Inlet Weekly Drift Gillnet Days Open

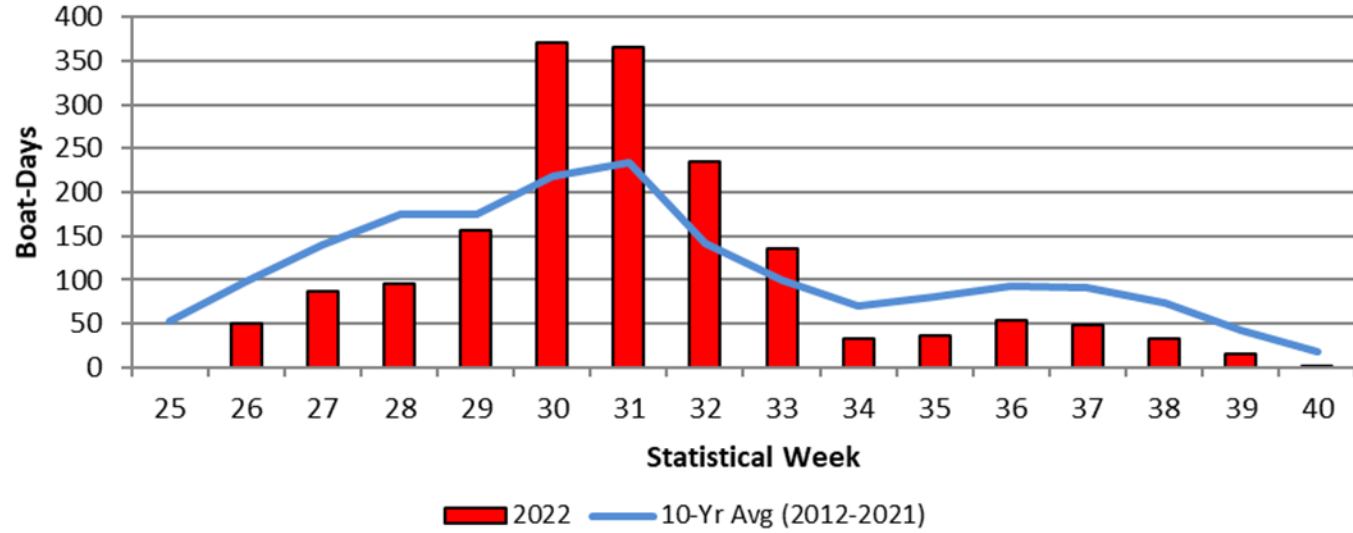


2022 Stephens Passage Weekly Drift Gillnet Days Open

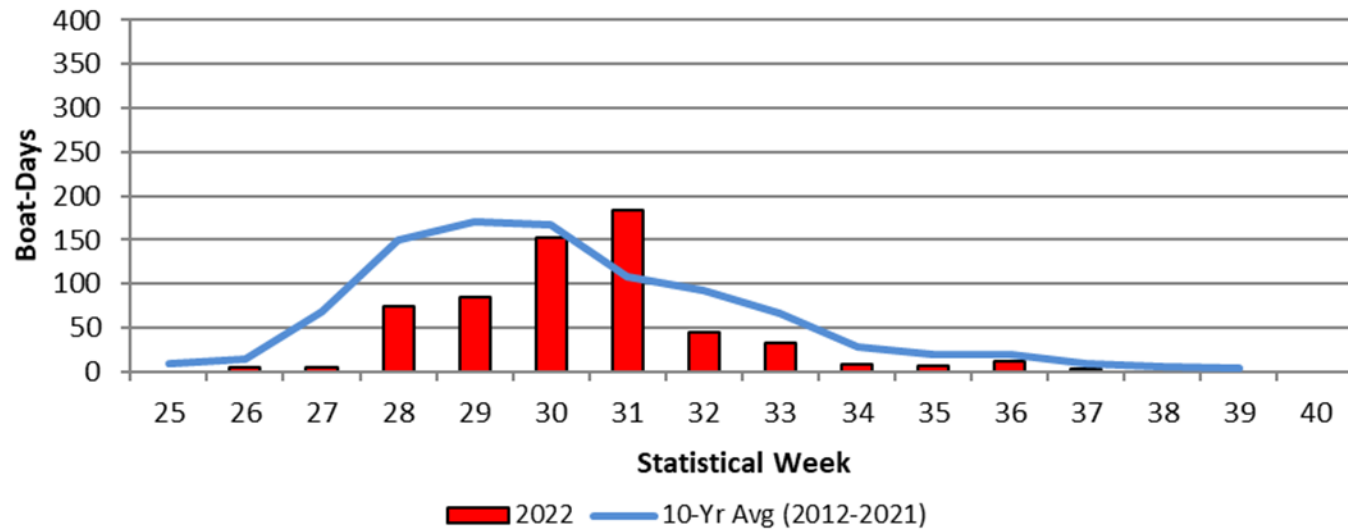




2022 Taku Inlet Weekly Drift Gillnet Boat-Days

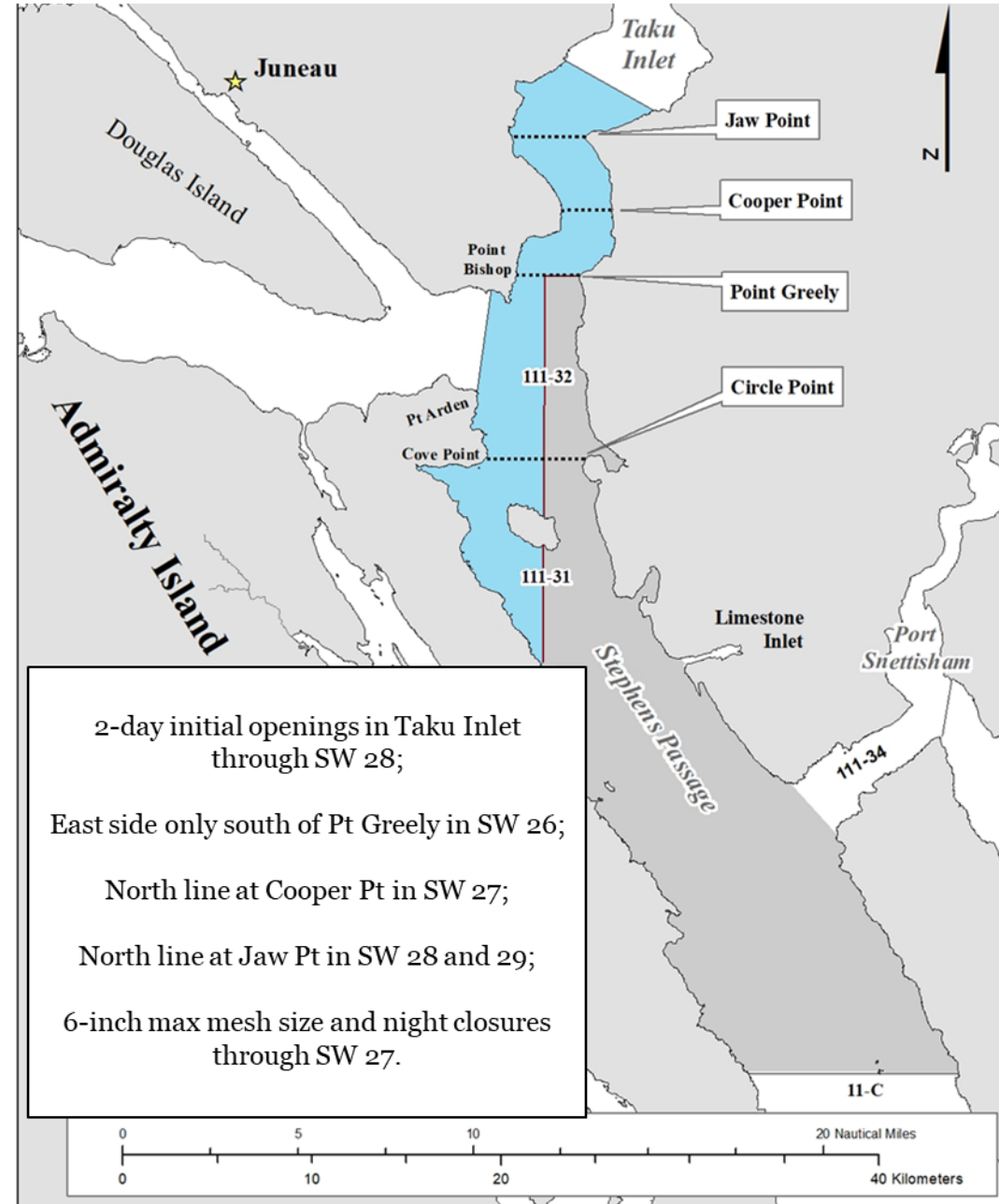
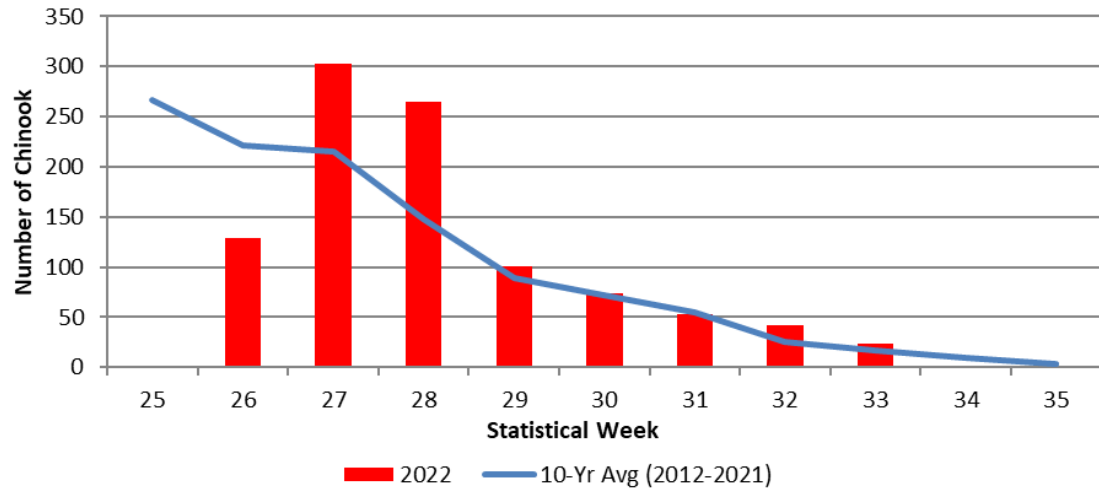


2022 Stephens Passage Weekly Drift Gillnet Boat-Days



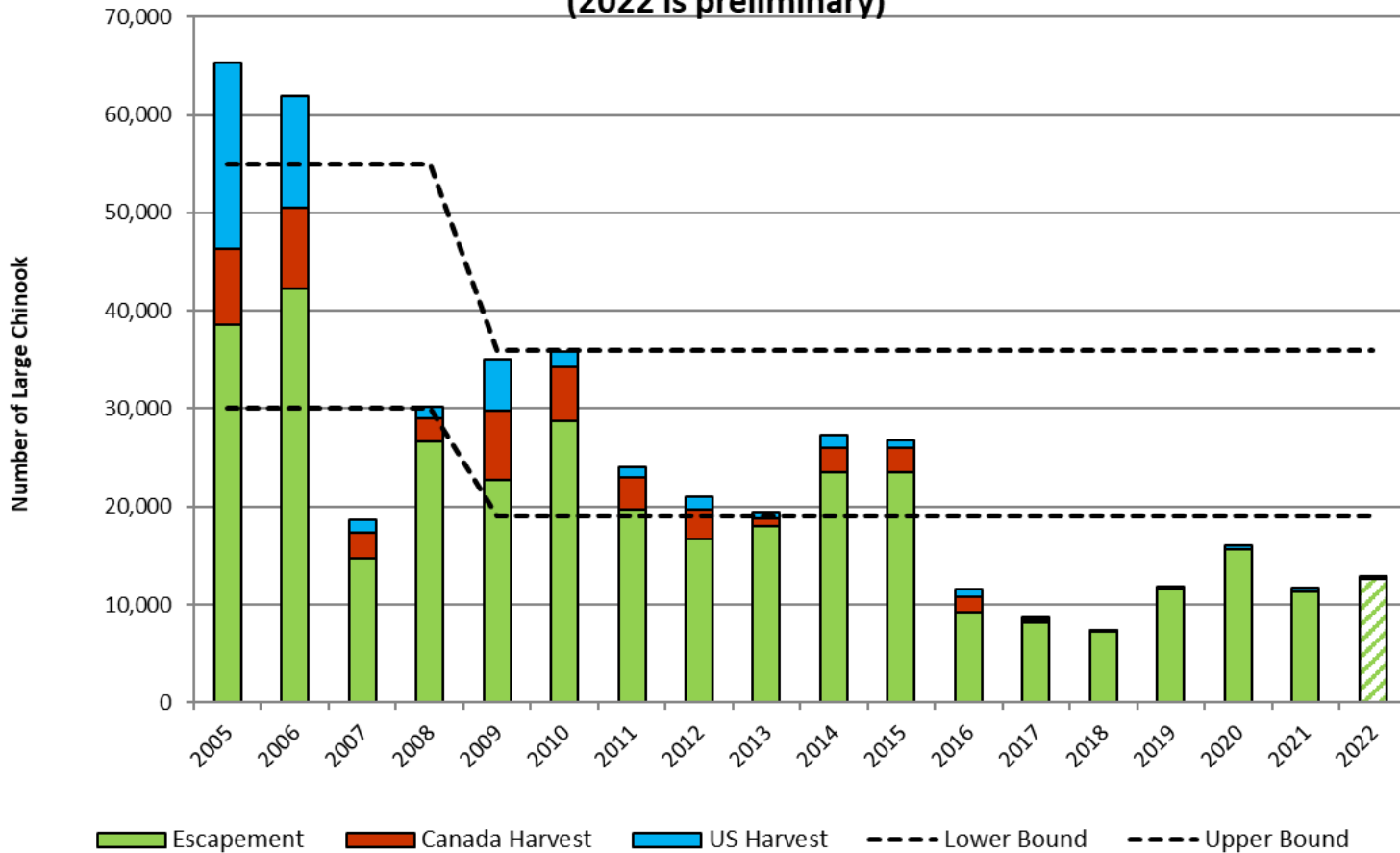
2022 District 11 Chinook Conservation Measures in the Directed Sockeye Salmon Drift Gillnet Fishery:

2022 D11 Traditional Weekly Drift Gillnet Chinook Salmon Harvest



Taku River Large Chinook Salmon Terminal Run Size, 2005-2022

(2022 is preliminary)



2022 Taku River Large Chinook Salmon

Terminal Run forecast: 6,600 fish

Terminal Run estimate: 13,000 fish
(* preliminary)

U.S. D11 GSI-based harvest:

Gillnet = 54 fish (Avg = 133)

Sport = 142 fish (Avg = 177)

PU = 14 fish (Avg = 13)

210 fish (Avg = 323)

(*Avg = 2016-2021 conservation period)

Canada harvest:

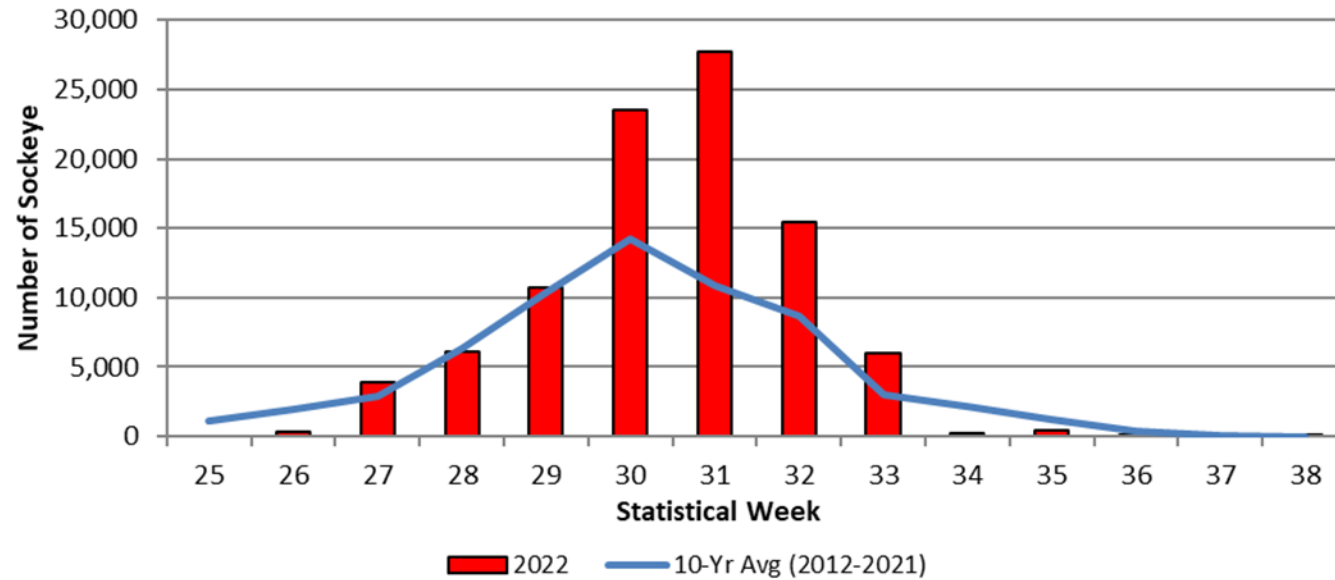
Aboriginal = ? (Avg = 60 fish)

Comm. release = 135 fish

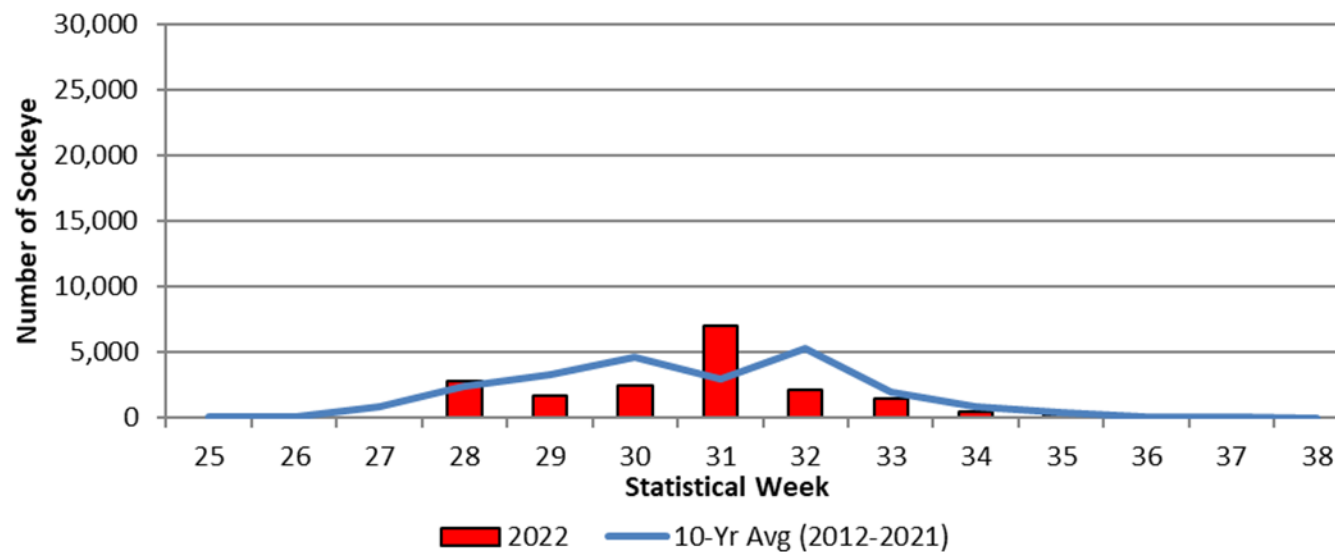


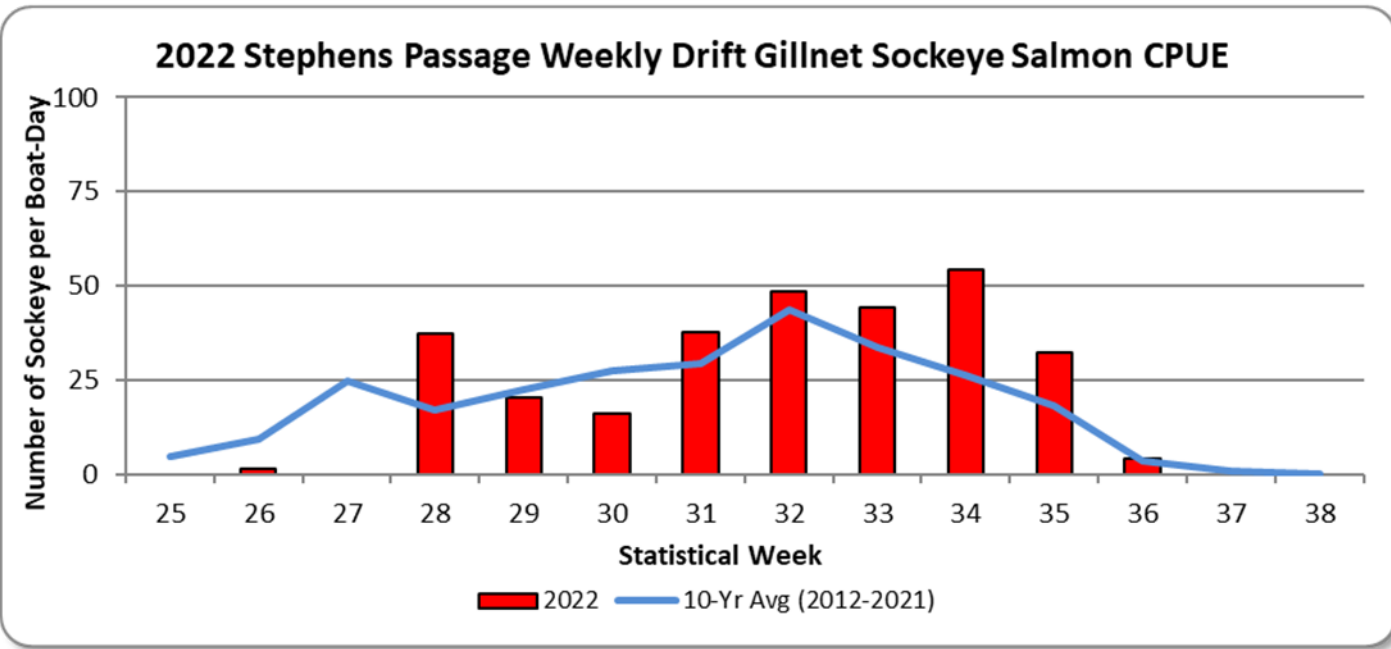
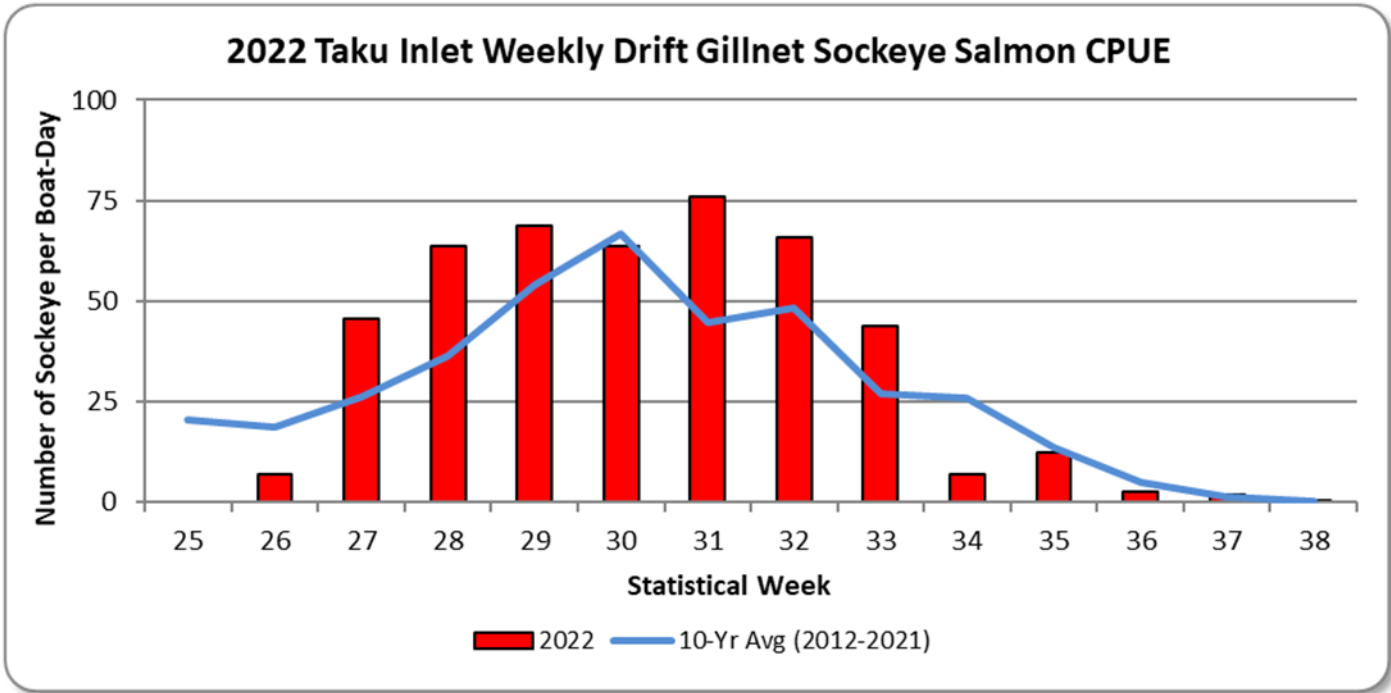


2022 Taku Inlet Weekly Drift Gillnet Sockeye Salmon Harvest

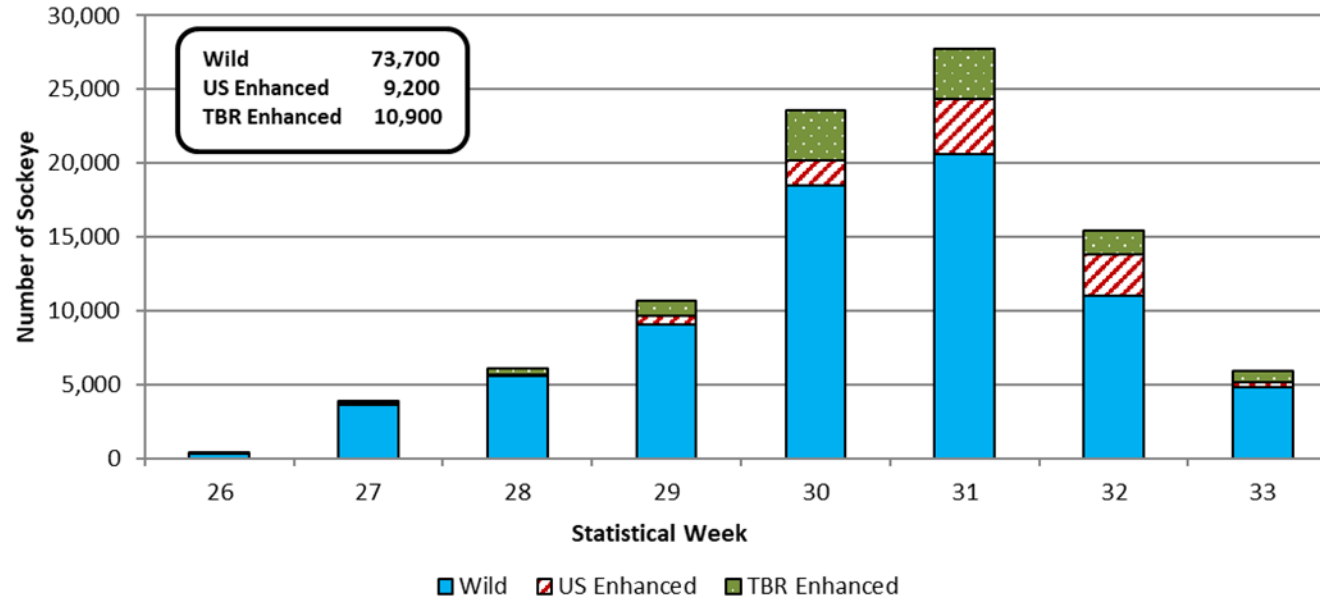


2022 Stephens Passage Weekly Drift Gillnet Sockeye Salmon Harvest

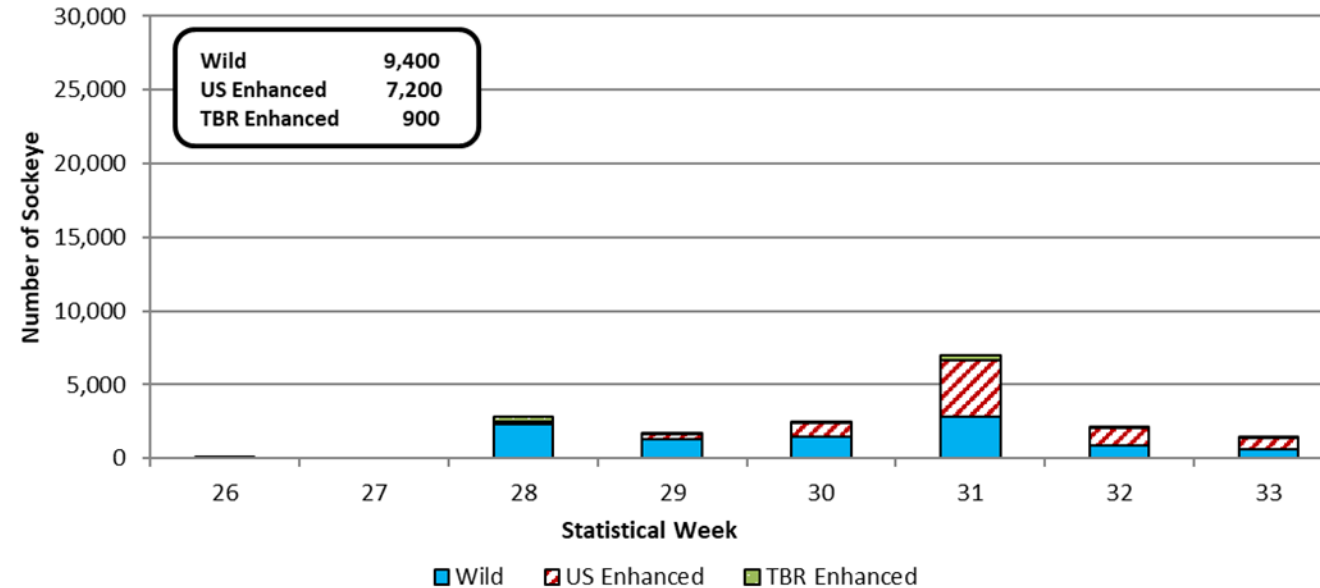




2022 Taku Inlet Weekly Drift Gillnet Sockeye Salmon Harvest Composition

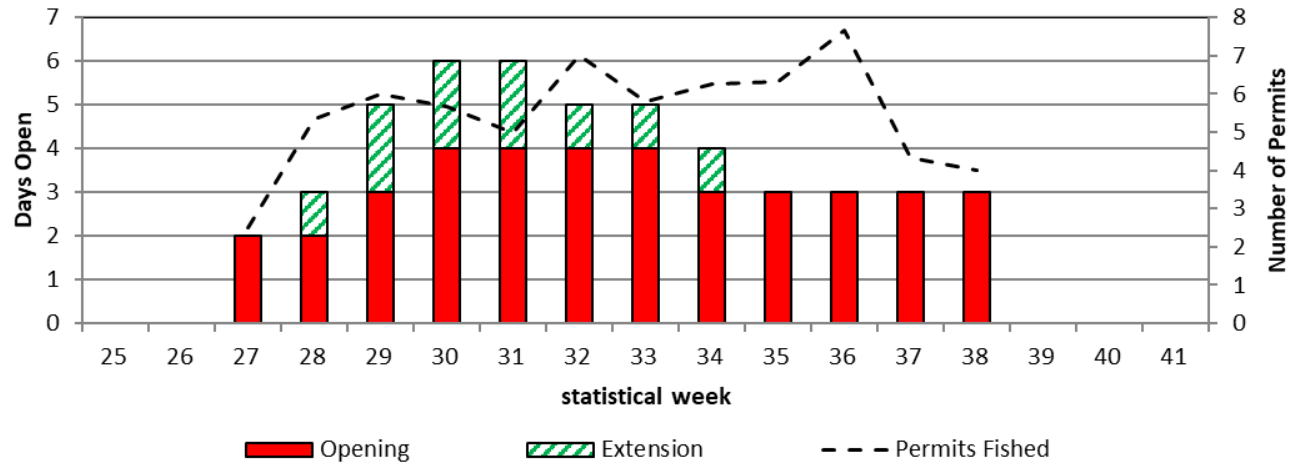


2022 Stephens Passage Weekly Drift Gillnet Sockeye Salmon Harvest Composition

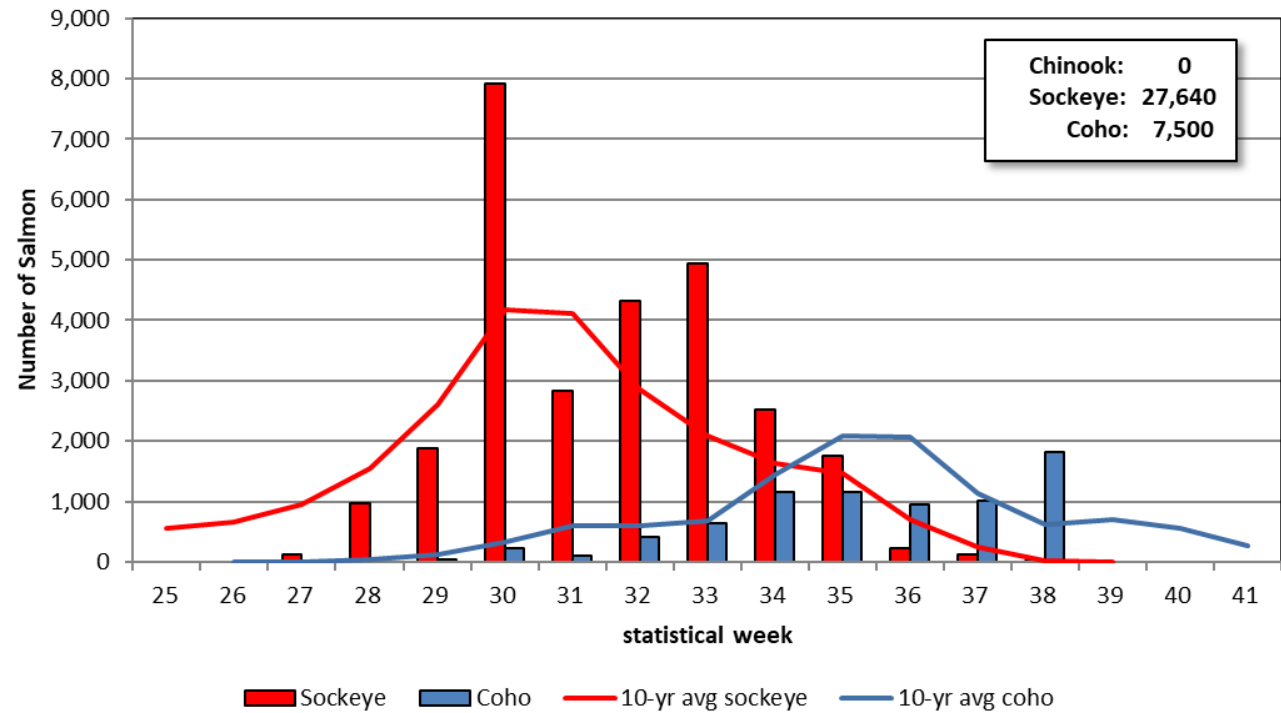




2022 Canada Taku River Weekly Commercial Gillnet Time and Effort



2022 Canada Taku River Weekly Commercial Fishery Harvest



Preliminary 2022 Taku River Sockeye Salmon Run Reconstruction

Terminal Run Size: 187,000 fish

U.S. Harvest: 65,000 fish

Canada Harvest: 27,600 fish

Escapement: 94,000 fish

Management Objective: 58,000 fish

TAC: 129,000 fish

Harvest shares: 75% U.S., 25% Canada (based on 23k enhanced)

U.S. AC: 96,800 fish (harvested 67%)

Canada AC: 32,300 fish (harvested 85%)



Preliminary 2022 Sockeye Salmon Escapements

Taku River: 94,000 fish

Escapement Goal Range: 40,000 – 75,000 fish

King Salmon Lake: 9,400 fish (4,900 average)

Kuthai Lake: 1,100 fish (850 average; 26 in 2021)

Little Trapper Lake: 10,600 fish (9,100 average)

Tatsamenie Lake: 22,300 fish (12,800 average)

Speel Lake: 5,700 fish (5,600 average)

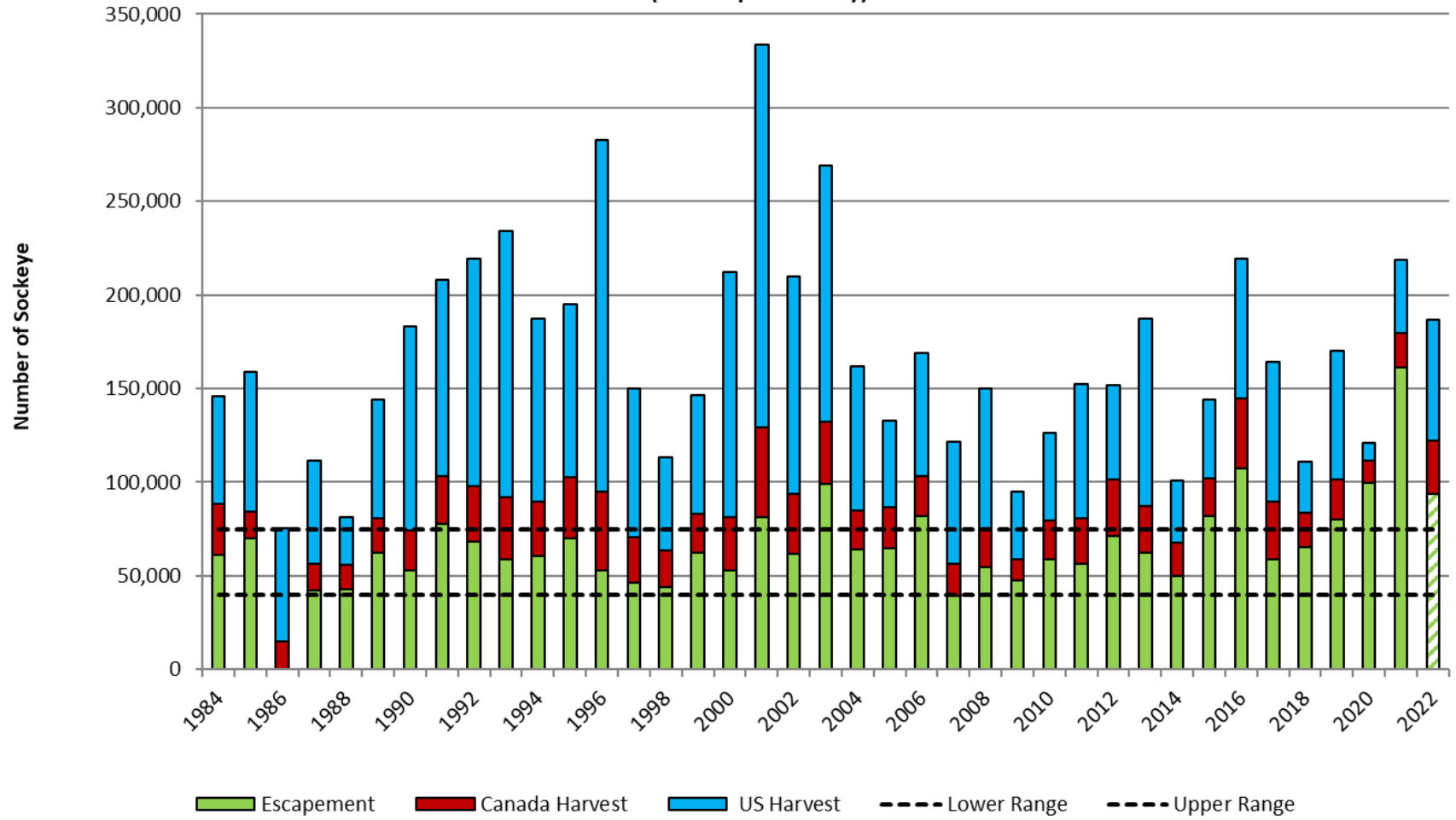
SEG Range: 4,000 – 9,000 fish

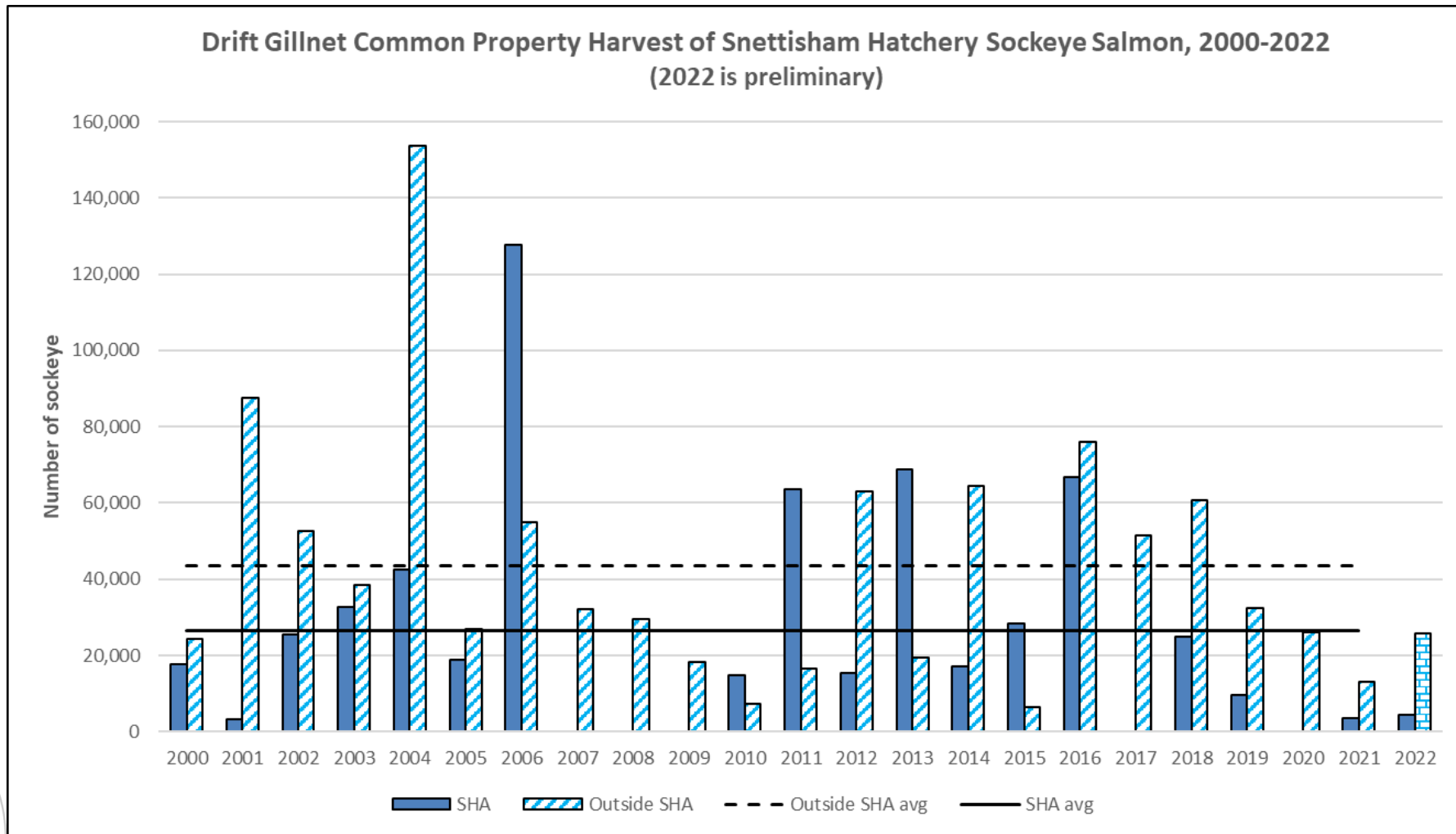
Crescent Lake: No fish observed on aerial surveys





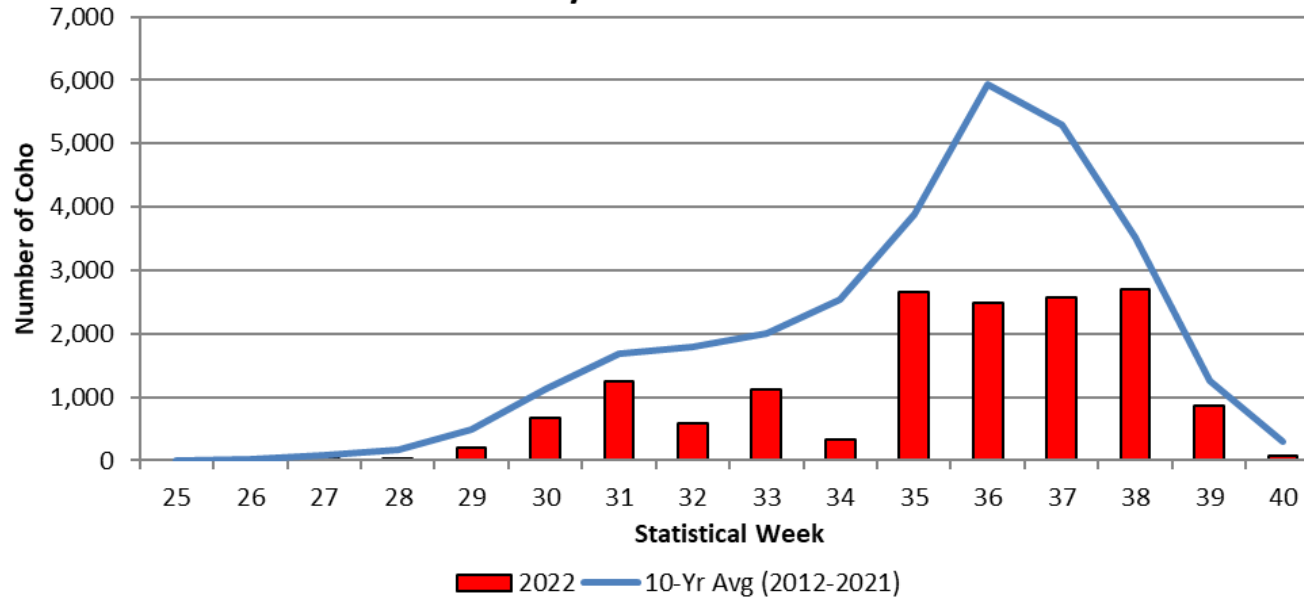
Taku River Sockeye Salmon Terminal Run Size, 1984-2022
 (2022 is preliminary)



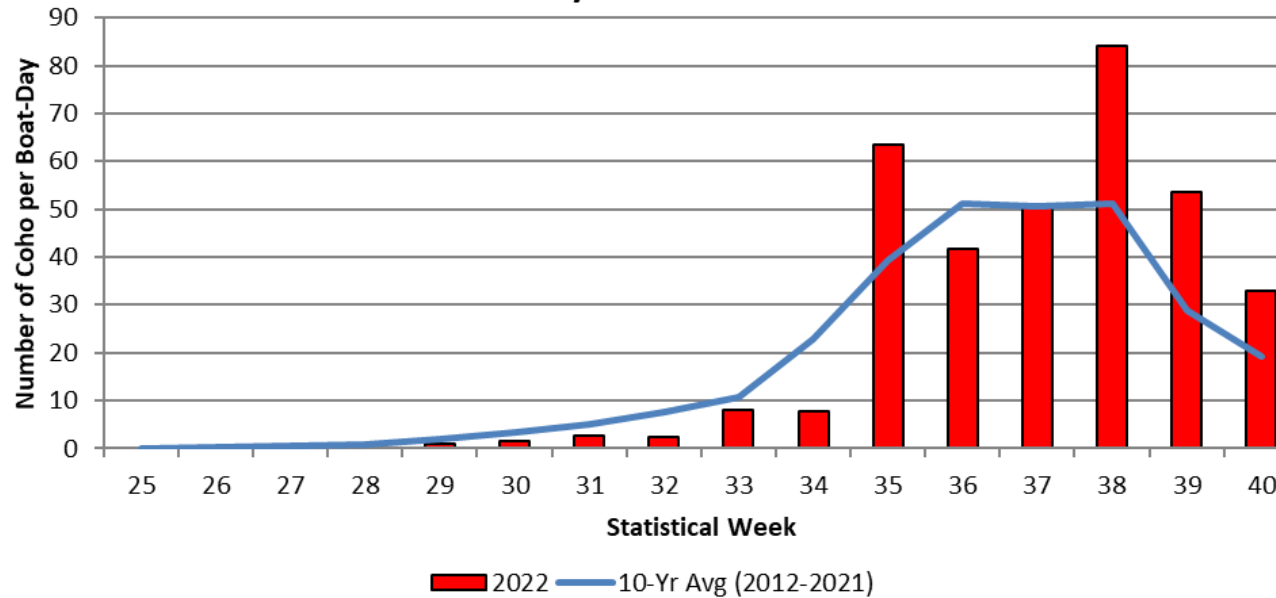


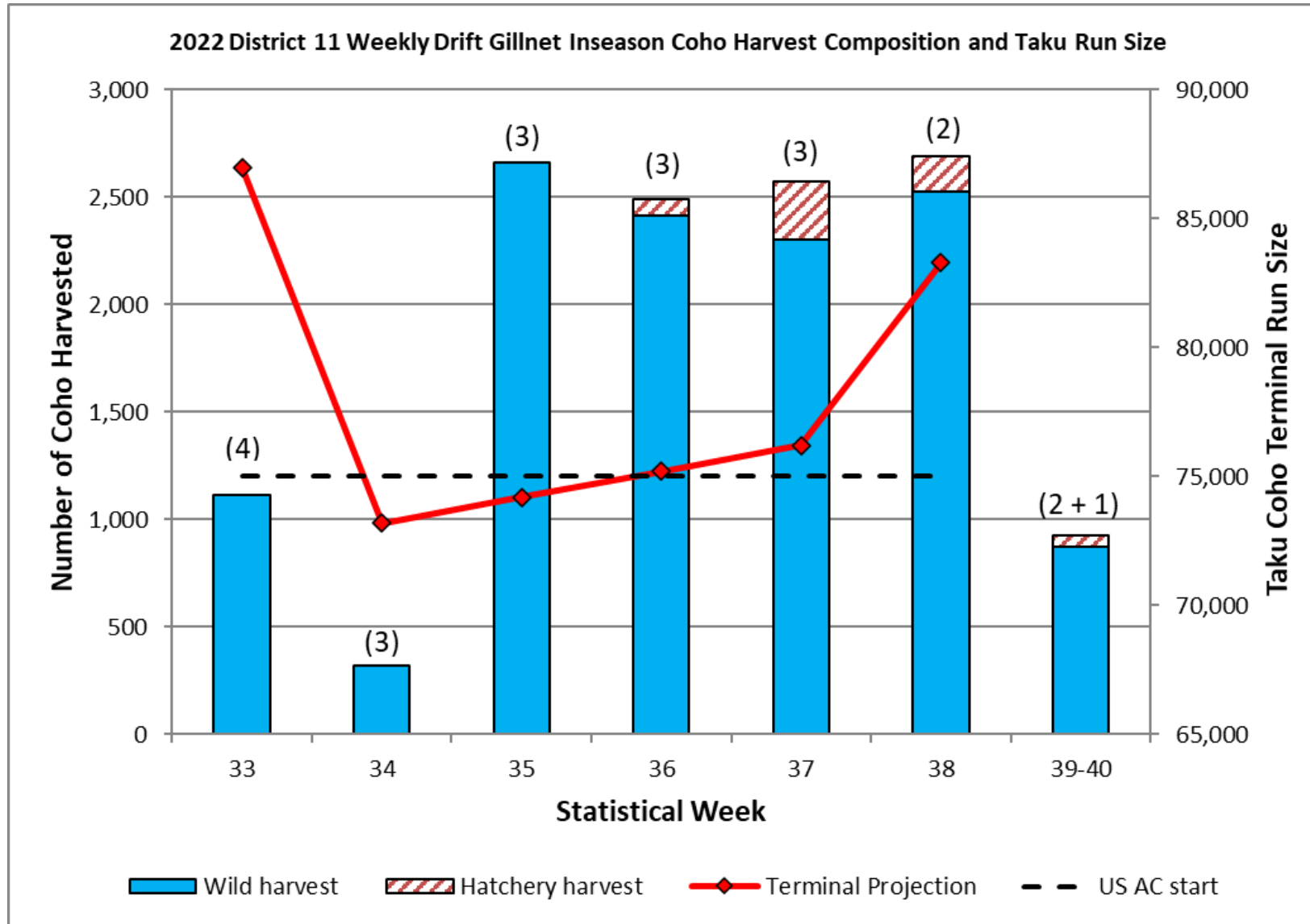


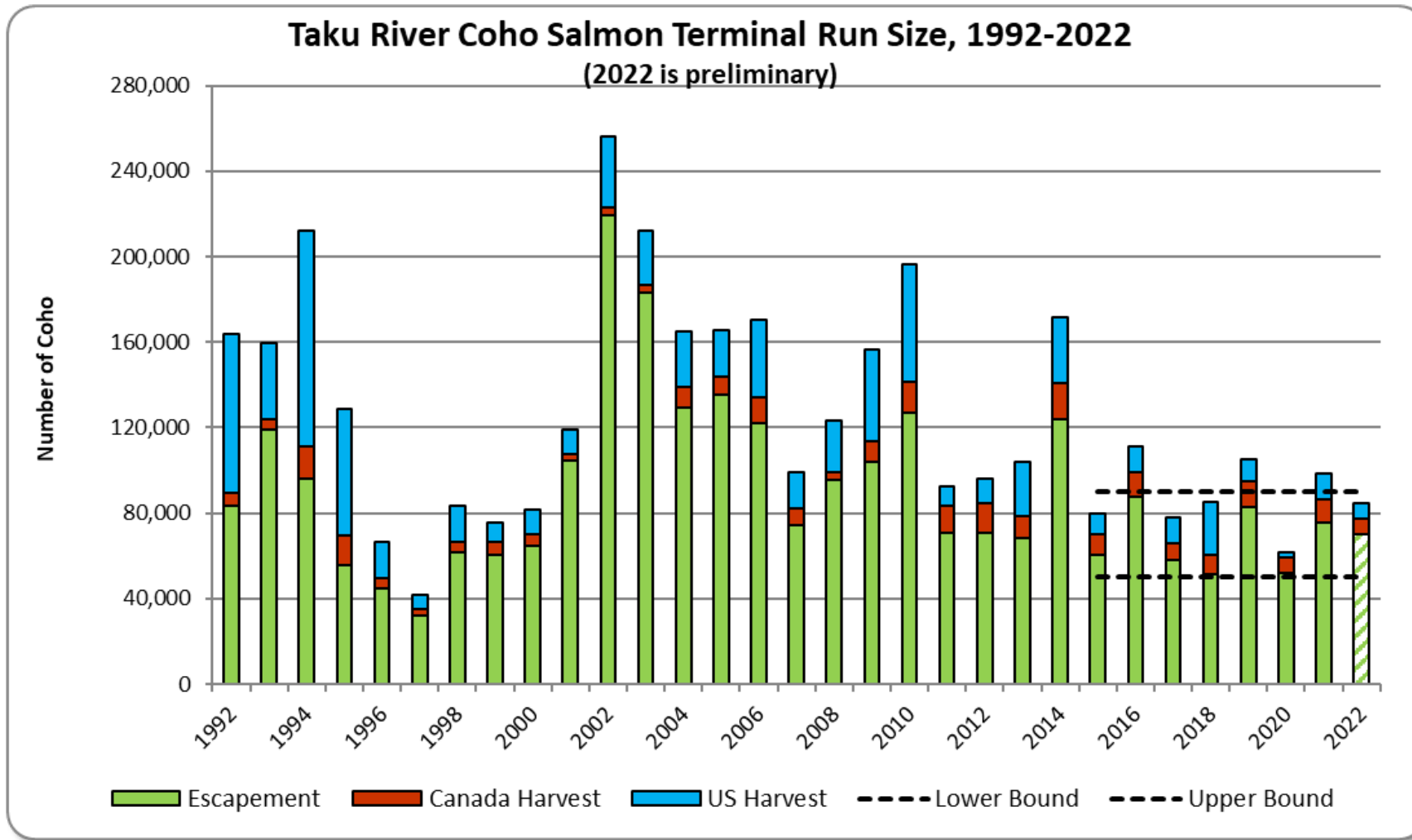
2022 District 11 Weekly Drift Gillnet Coho Salmon Harvest



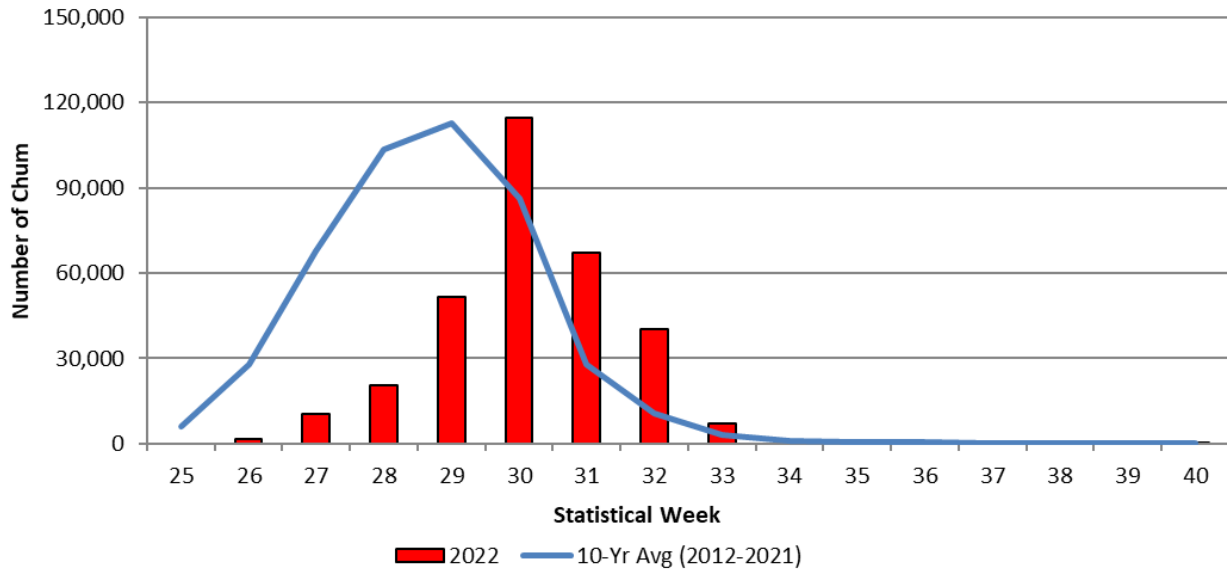
2022 District 11 Weekly Drift Gillnet Coho Salmon CPUE



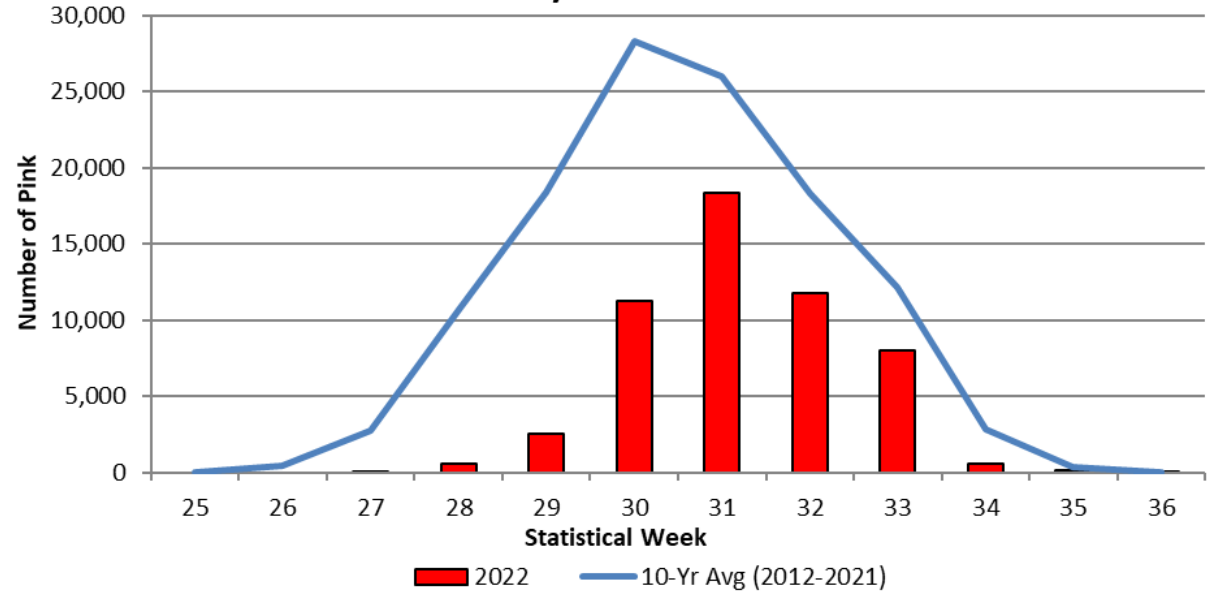




2022 D11 Traditional Weekly Drift Gillnet Chum Salmon Harvest



2022 D11 Traditional Weekly Drift Gillnet Pink Salmon Harvest



District 11 Drift Gillnet Estimated Ex-vessel Value by Species, 2001-2022

