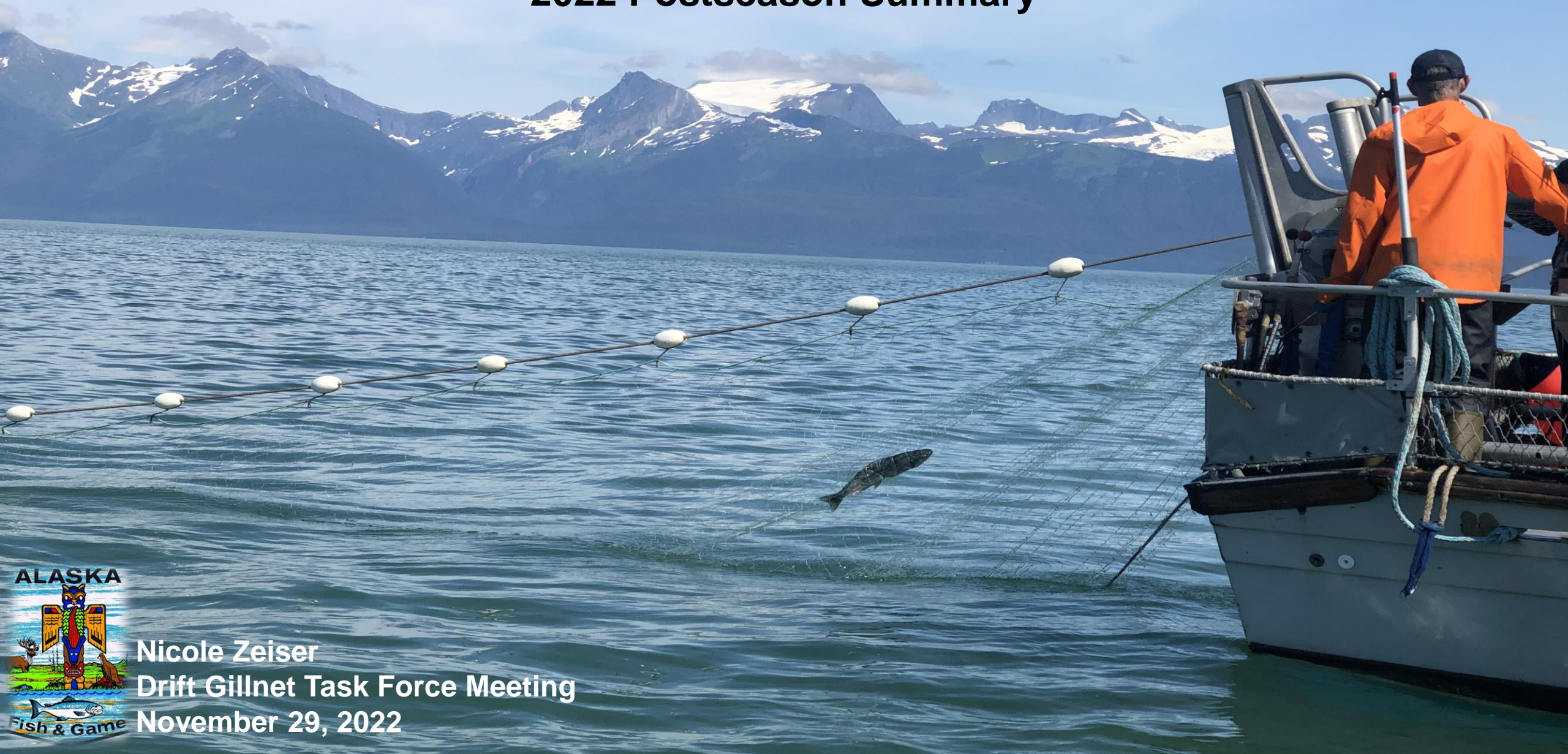


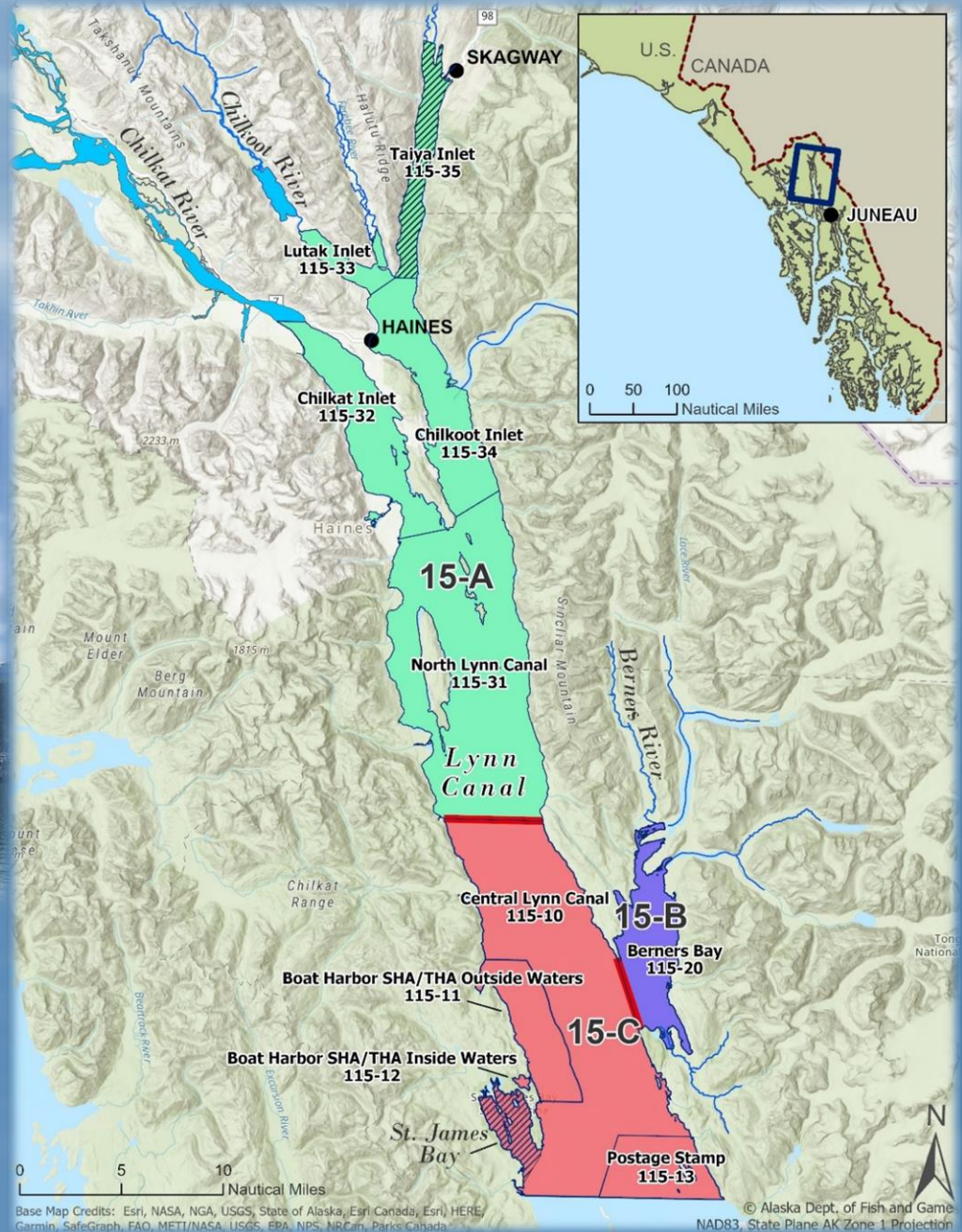
DISTRICT 15 (LYNN CANAL) DRIFT GILLNET FISHERY

2022 Postseason Summary

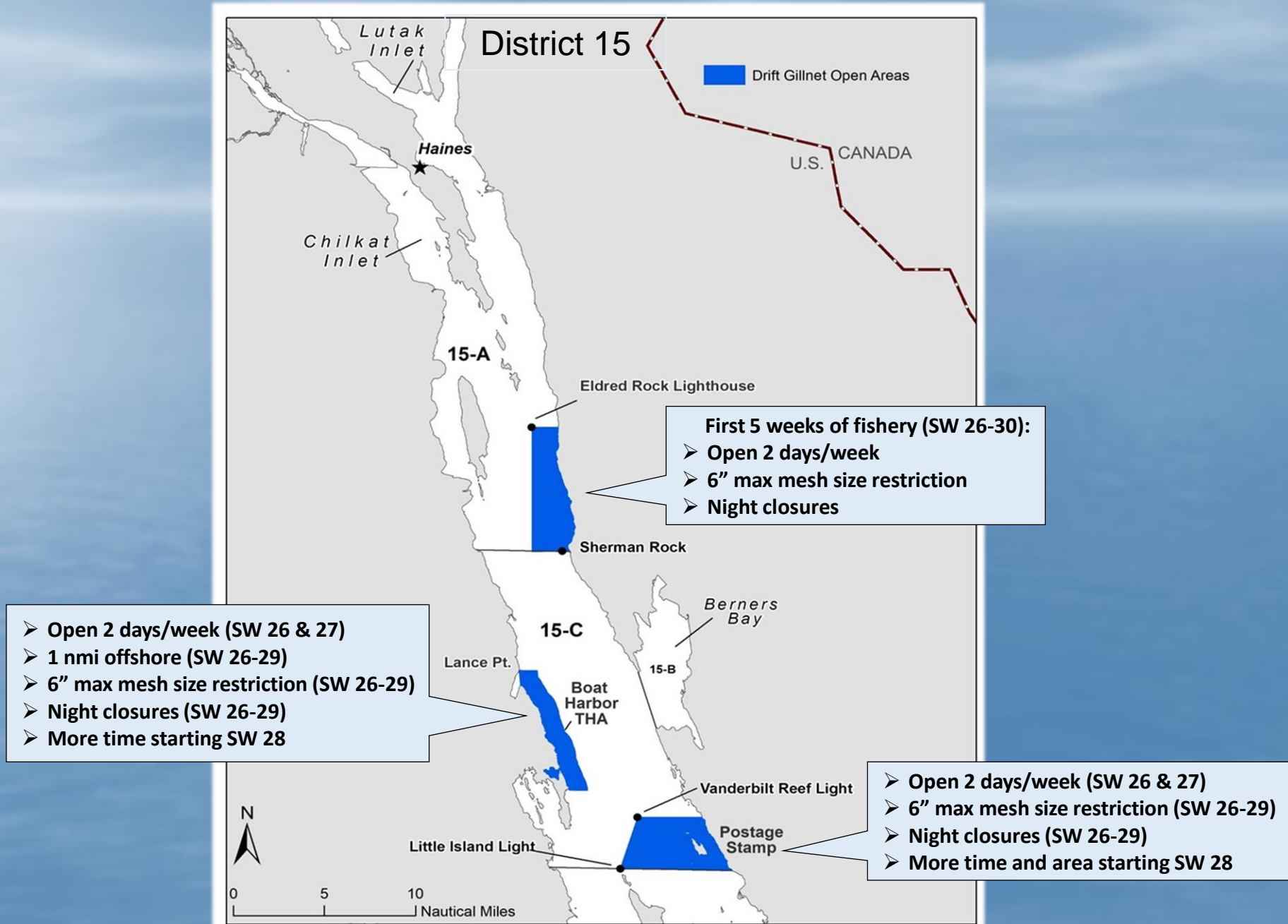


Nicole Zeiser
Drift Gillnet Task Force Meeting
November 29, 2022

DISTRICT 15 GILLNET FISHING AREAS AND STATISTICAL BOUNDARIES

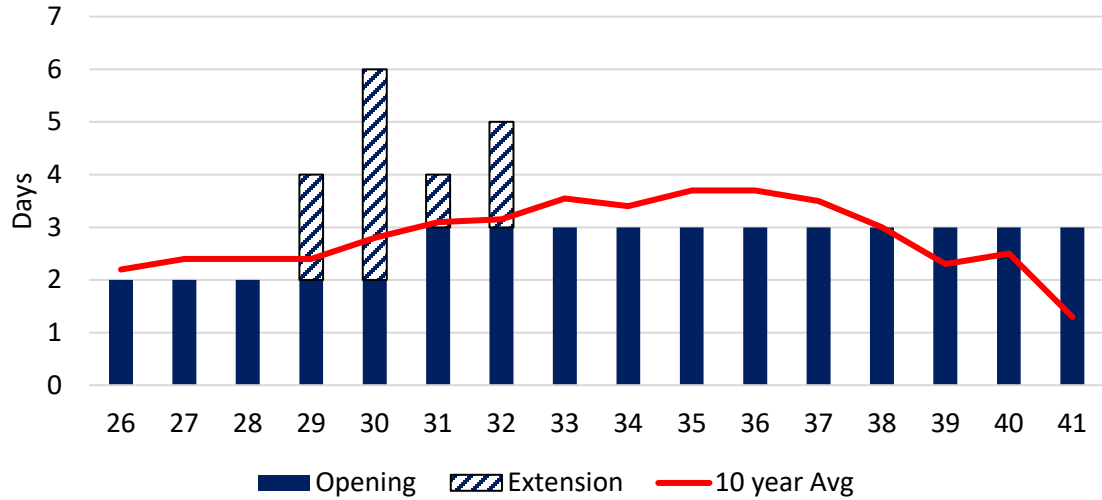


2022 CHILKAT RIVER CHINOOK SALMON CONSERVATION MEASURES

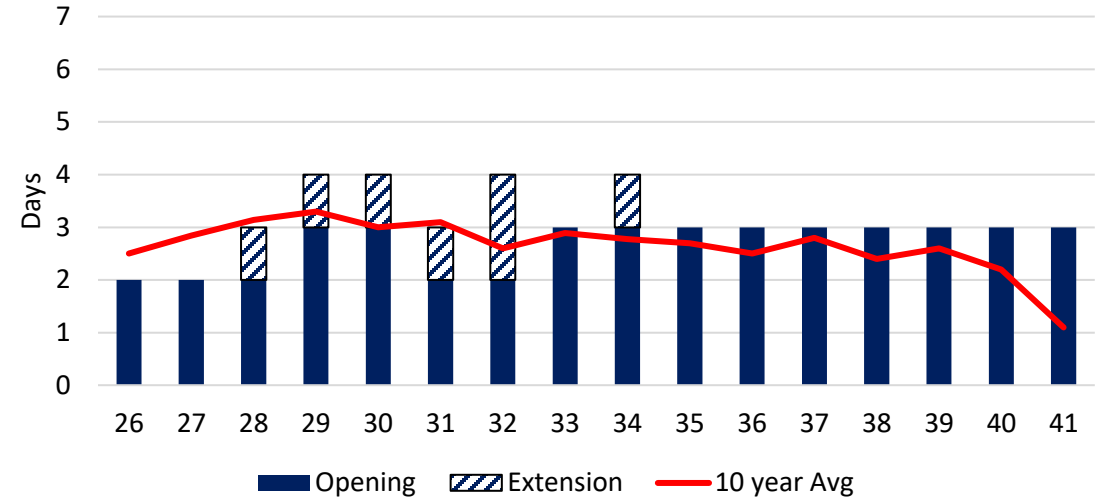


DISTRICT 15 WEEKLY GILLNET FISHING PERIODS

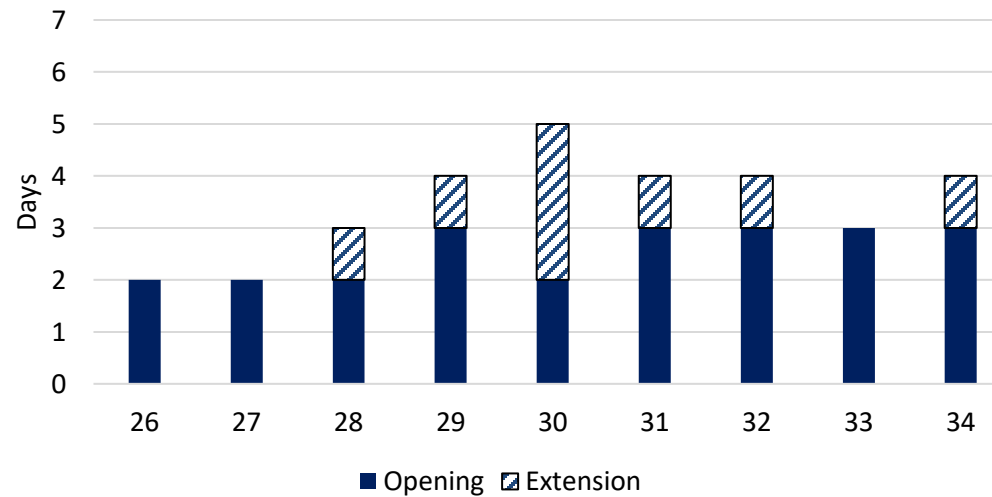
Section 15-A Weekly Openers



Section 15-C Weekly Openers



Boat Harbor THA (Outside waters) Weekly Openers



DISTRICT 15 DRIFT GILLNET TIME, EFFORT, AND HARVEST

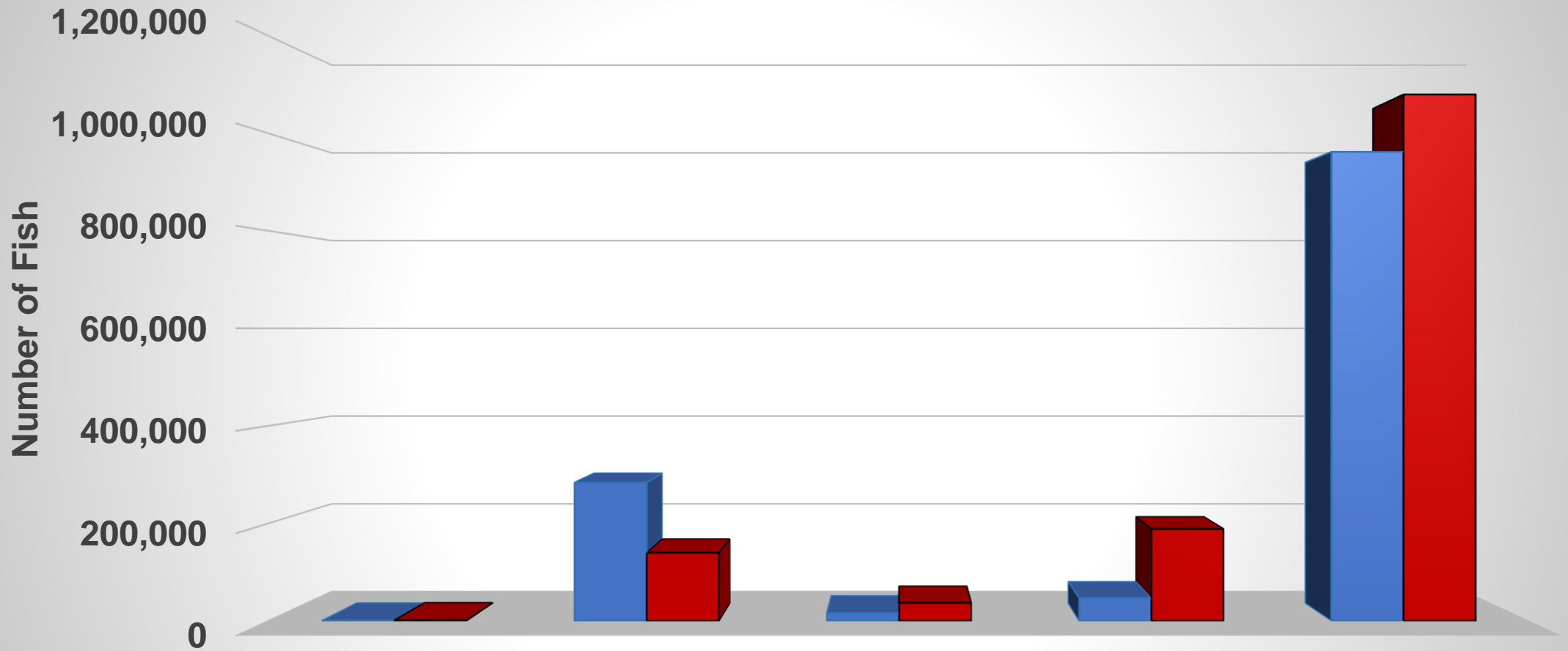
Stat Week	Days Open			Districtwide									
	State Managed		Boat Harbor THA ^{a,c}	Boats	Boat Days	Chinook	Sockeye	Coho	Pink	Chum			
	15A	15C	Outside waters										
Sockeye Management	26	2	2	2	85	170	98	1435	10	0	12,026		
	27	2	2	2	118	236	99	4,825	6	18	55,254		
	28	2	3	3	132	396	39	9,566	6	1,001	128,227		
	29	4	4	4	159	636	83	8,548	77	2,563	354,381		
	30	6	3	5	147	882	46	38,229	46	10,115	209,927		
	31	4	3	4	121	484	59	60,252	26	10,754	101,104		
	32	5	4	4	105	525	85	86,862	46	11,822	56,243		
	33	3	3	3	84	252	28	32,462	52	5,983	16,157		
	34	3	4	4	58	174	6	19,532	518	1,964	3,562		
	Fall Management	35	3	3	Common Property			54	162	30	16,988	936	2,448
36		3	3				41	123	8	2,790	810	164	793
37		3	3				42	126	0	1803	1,199	2	1,227
38		3	3				42	126	1	377	4,419	3	11,032
39		3	3				46	138	0	145	6,334	0	8,471
40		3	3				33	99	4	31	1,538	0	890
41		3	3				14	42	1	2	164	0	306
42	Season Closed												
Fishery Total	52	36	34	190	9,880	587	283,847	16,187	46,837	961,937			
2011-2020 Average^b	51	44	N/A	221	11,269	1,135	139,966	37,075	188,615	1,079,374			
2021 % Average	102%	82%	N/A	86%	88%	52%	203%	44%	25%	89%			

^a Inside waters of Boat Harbor THA open 7 days a week from SW 26-37

^b All averages from SW 26 –41

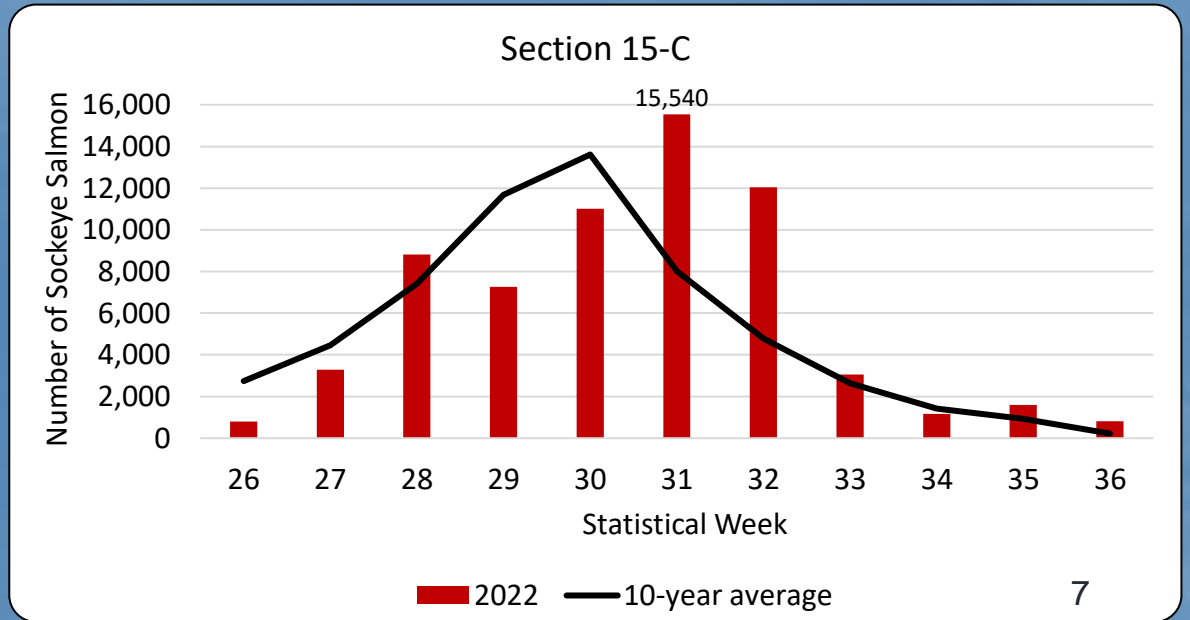
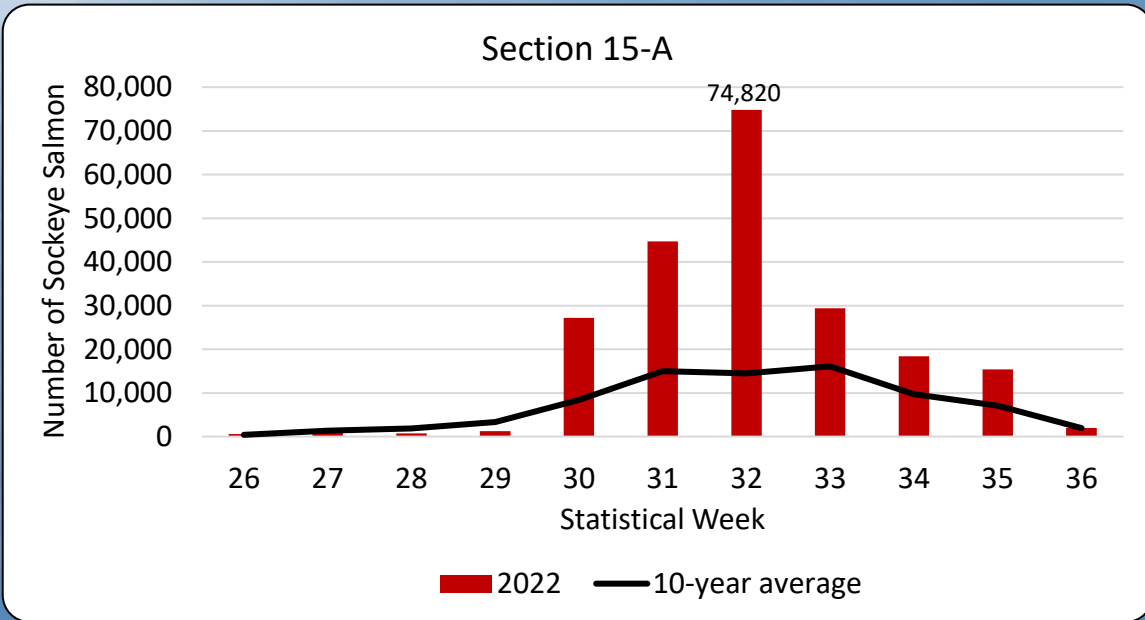
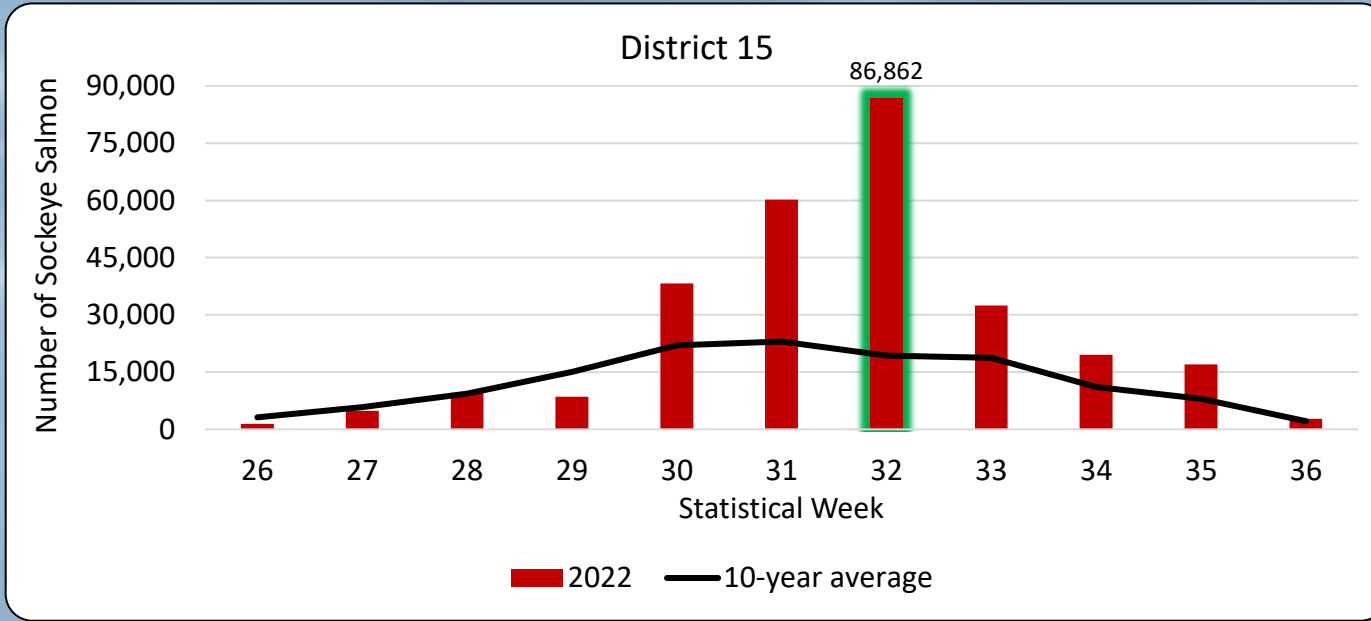
^c Outside waters of the BHTHA managed in conjunction with Section 15-C as traditional fishery from SW 35–41.

2022 DISTRICT 15 GILLNET HARVEST BY SPECIES

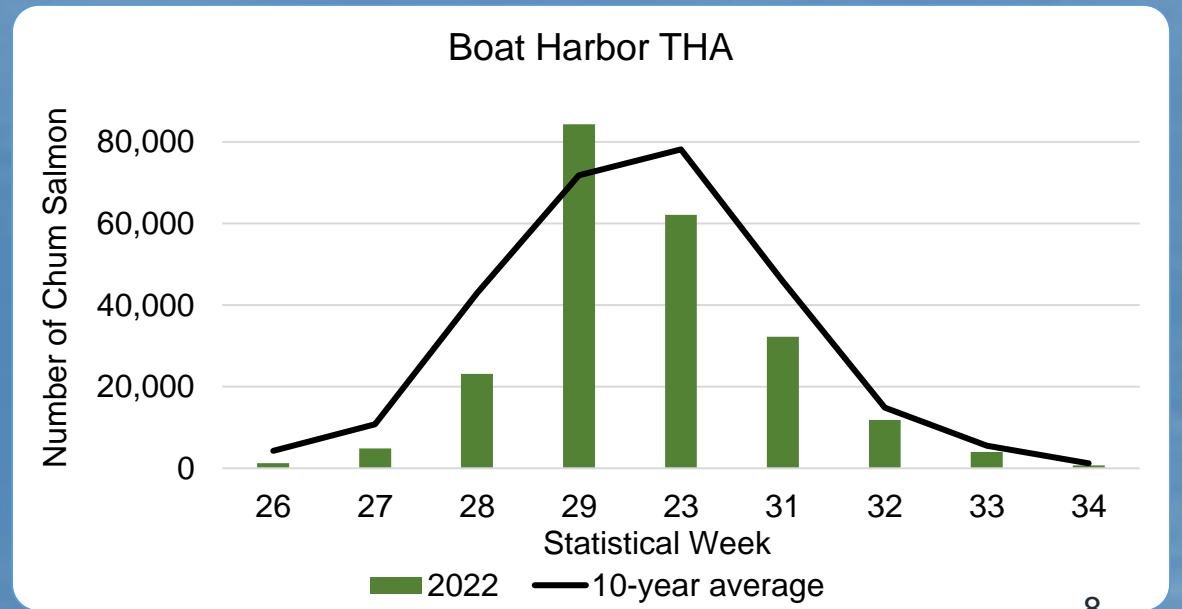
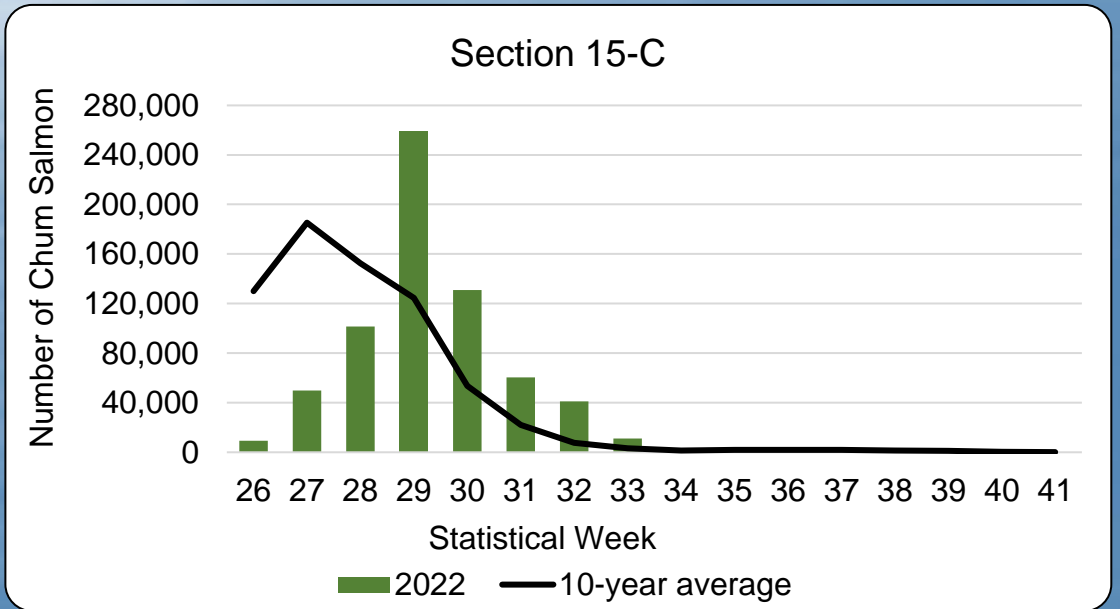
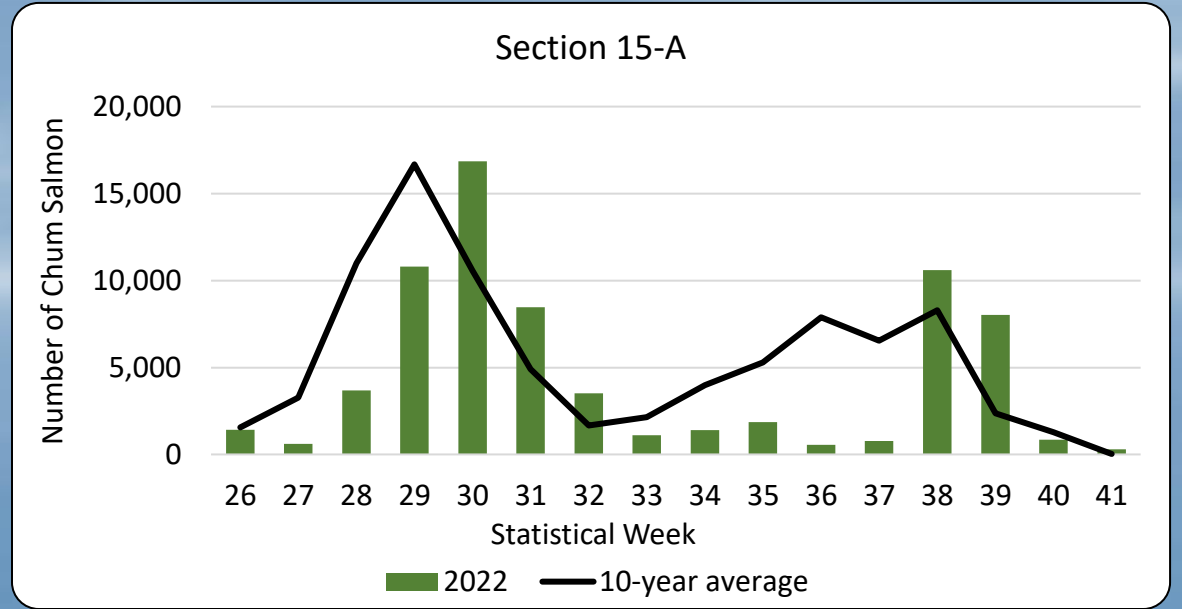
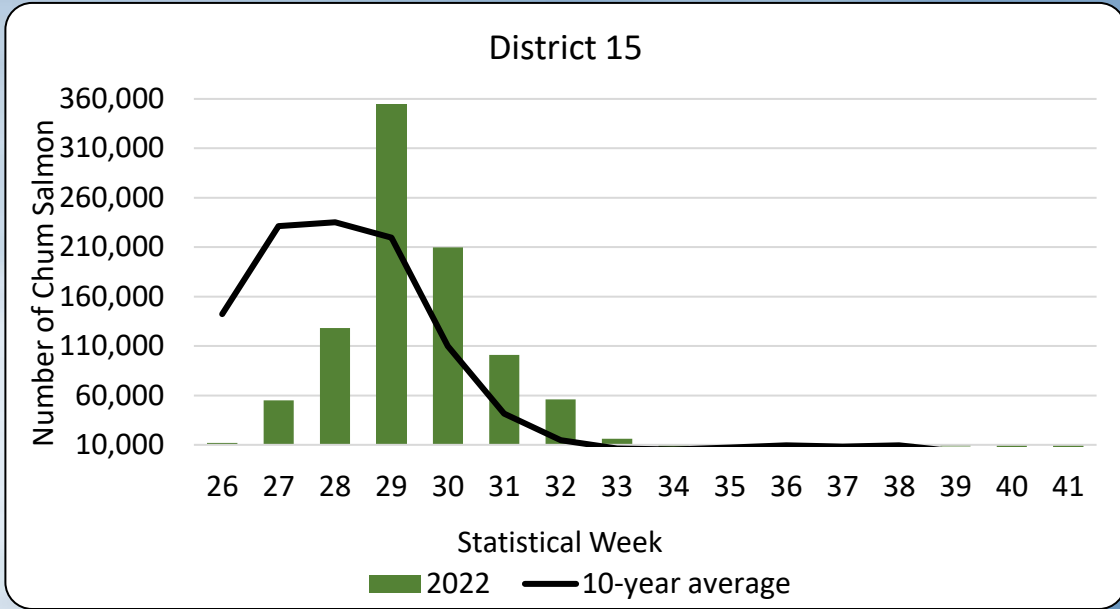


	Chinook	Sockeye	Coho	Pink	Chum
2022	587	283,847	16,187	46,837	961,937
10-year average	1,135	139,966	37,075	188,615	1,079,374

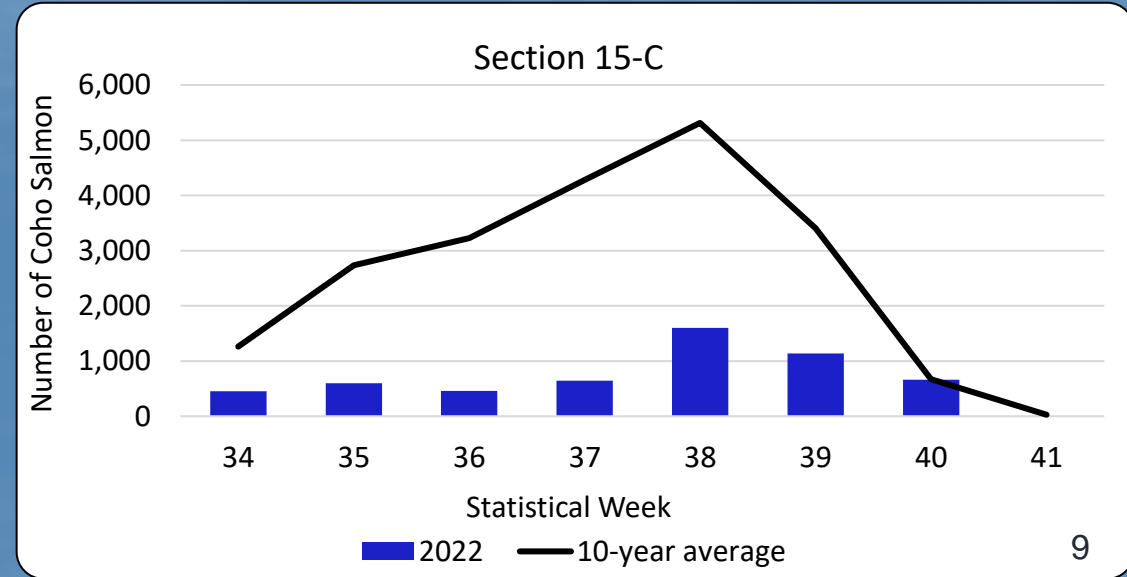
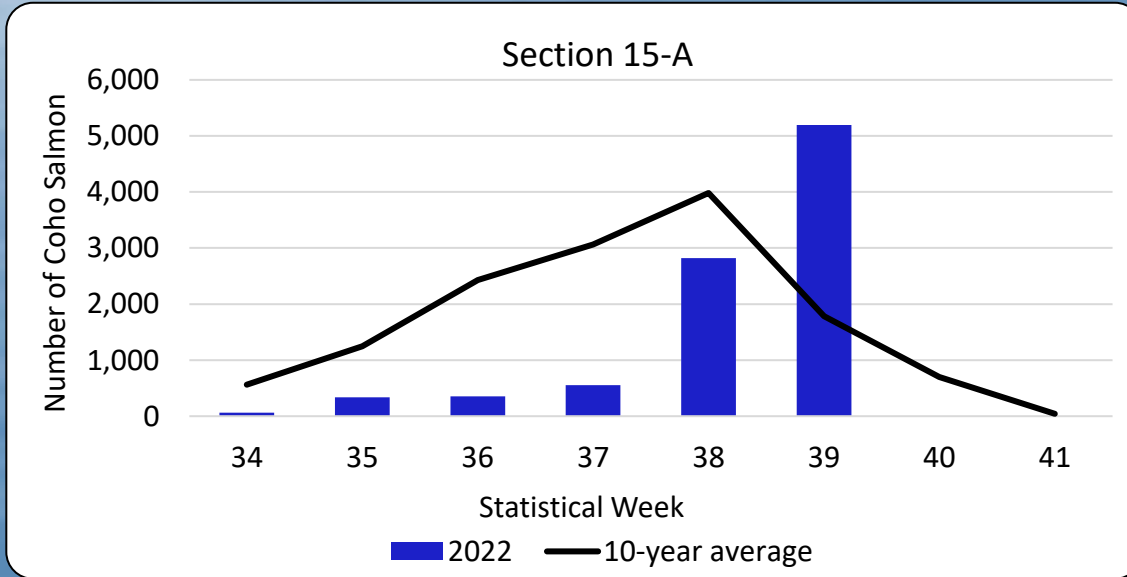
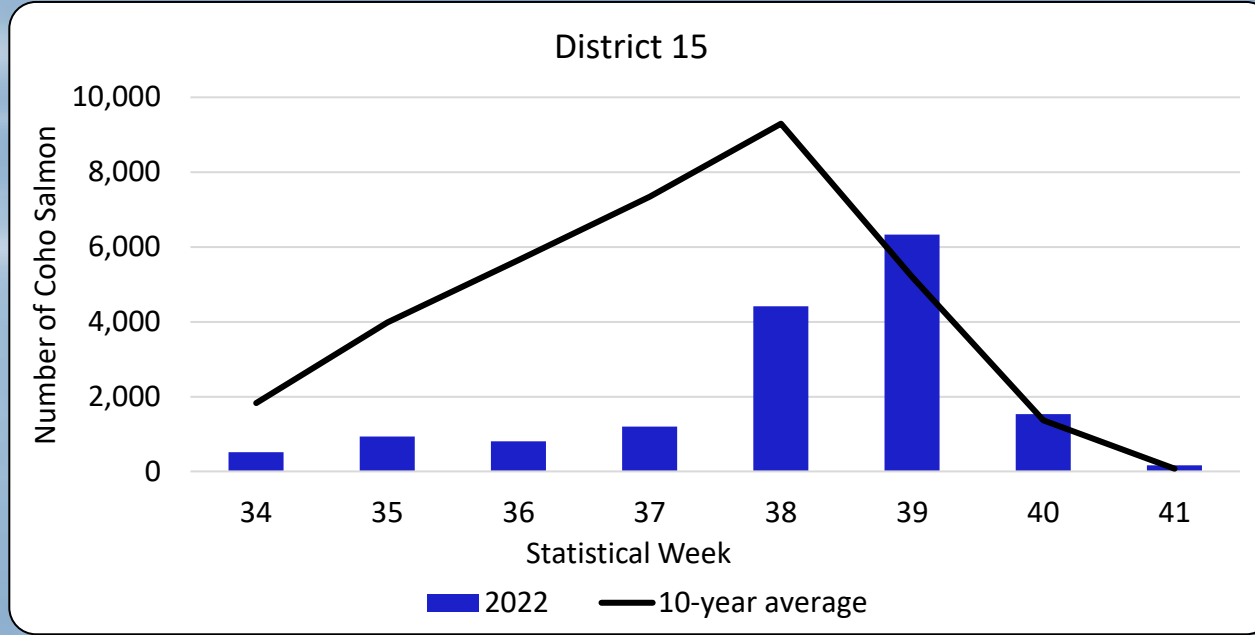
DISTRICT 15 WEEKLY SOCKEYE SALMON HARVEST



DISTRICT 15 WEEKLY CHUM SALMON HARVEST

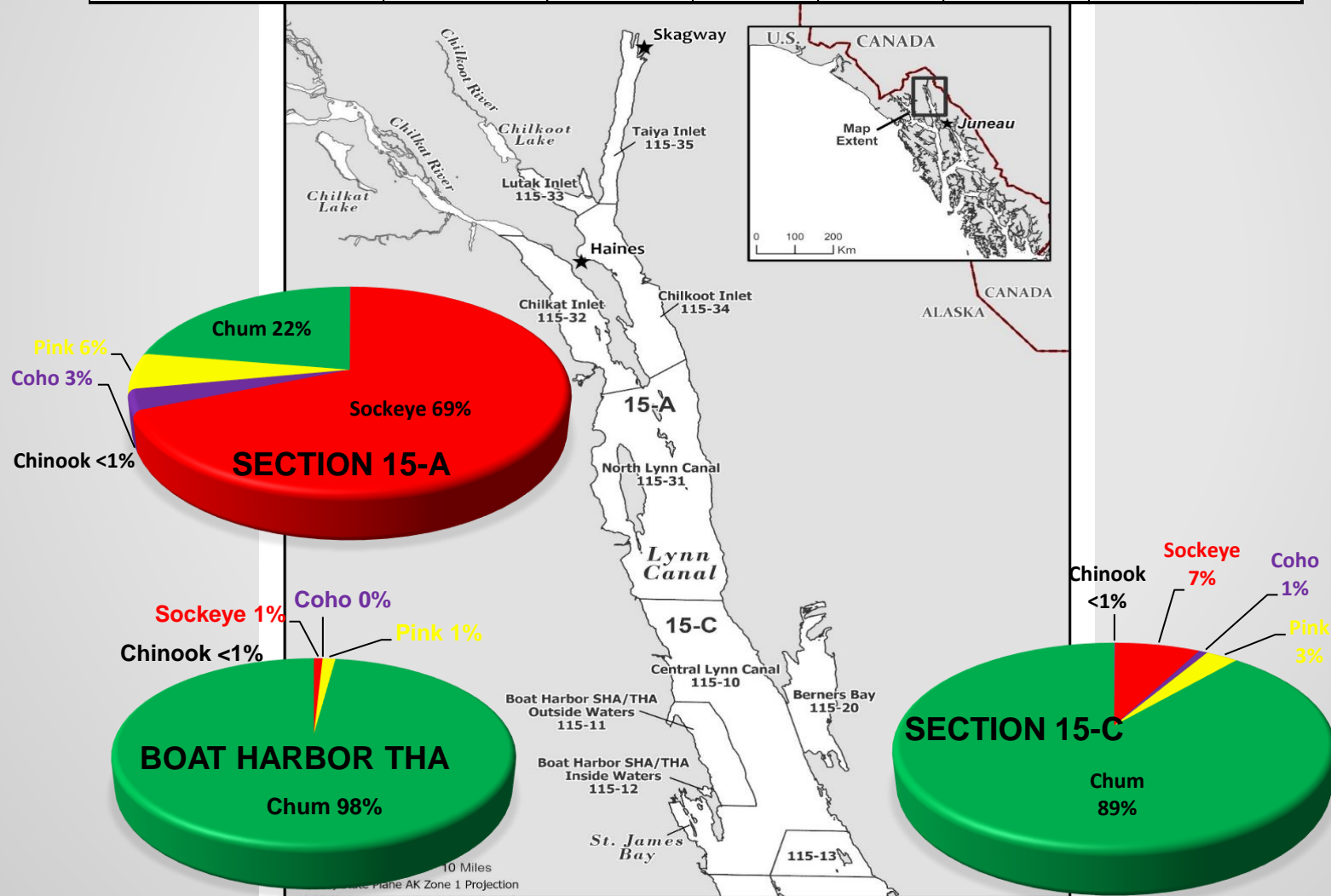


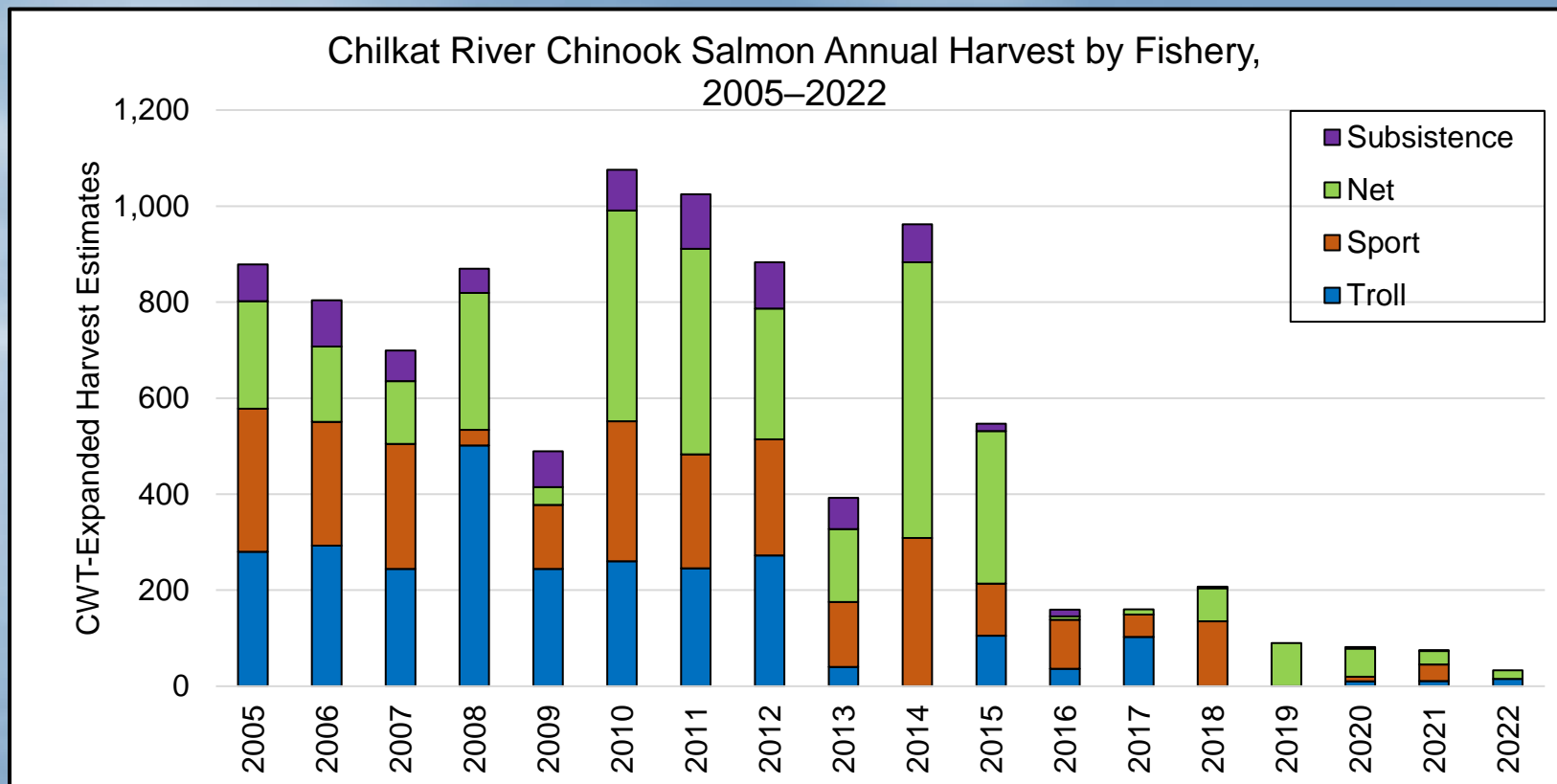
DISTRICT 15 WEEKLY COHO SALMON HARVEST



PROPORTION OF HARVEST BY SPECIES AND AREA

	Chinook	Sockeye	Coho	Pink	Chum	Total
Section 15-A	131	217,969	10,384	18,042	70,891	317,417
Section 15-C	444	64,710	5,786	27,076	666,695	764,711
Boat Harbor THA	12	1,168	17	1,719	224,351	227,267
Total Harvest	587	283,847	16,187	46,837	961,937	1,309,395

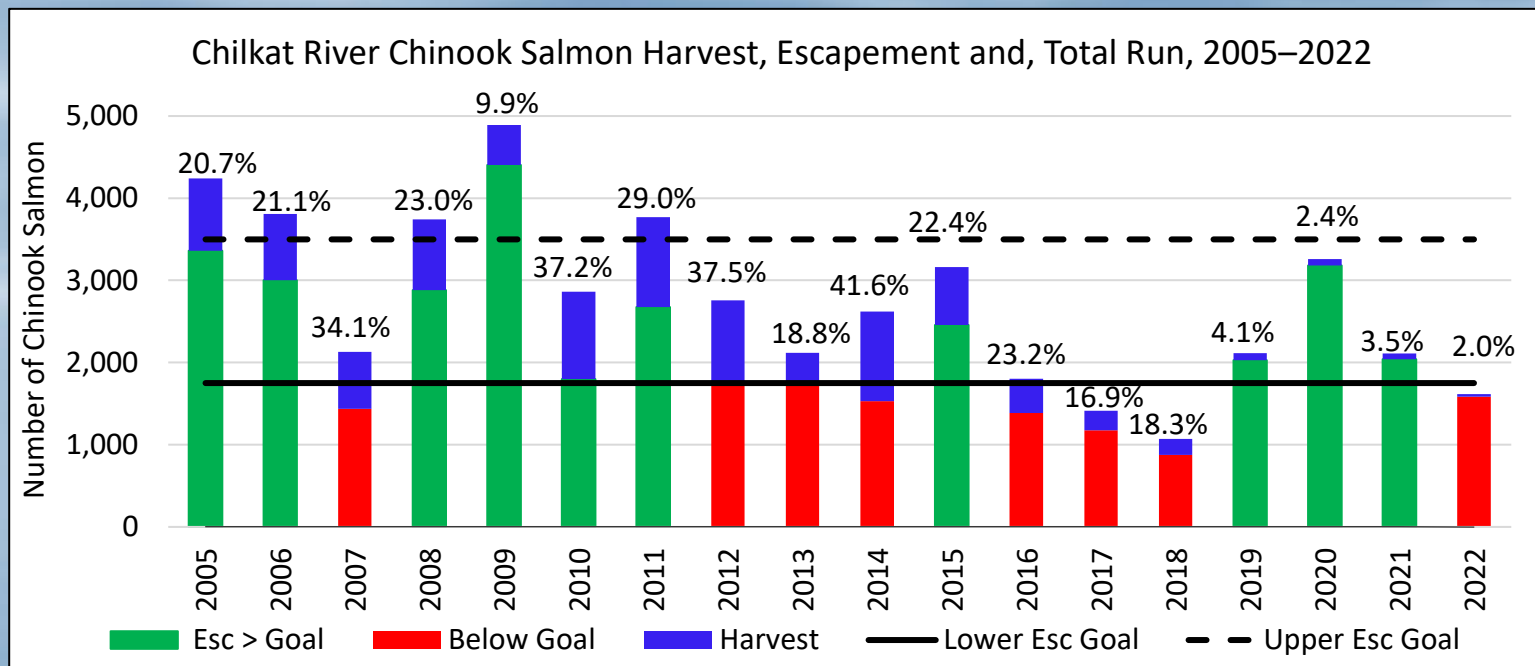




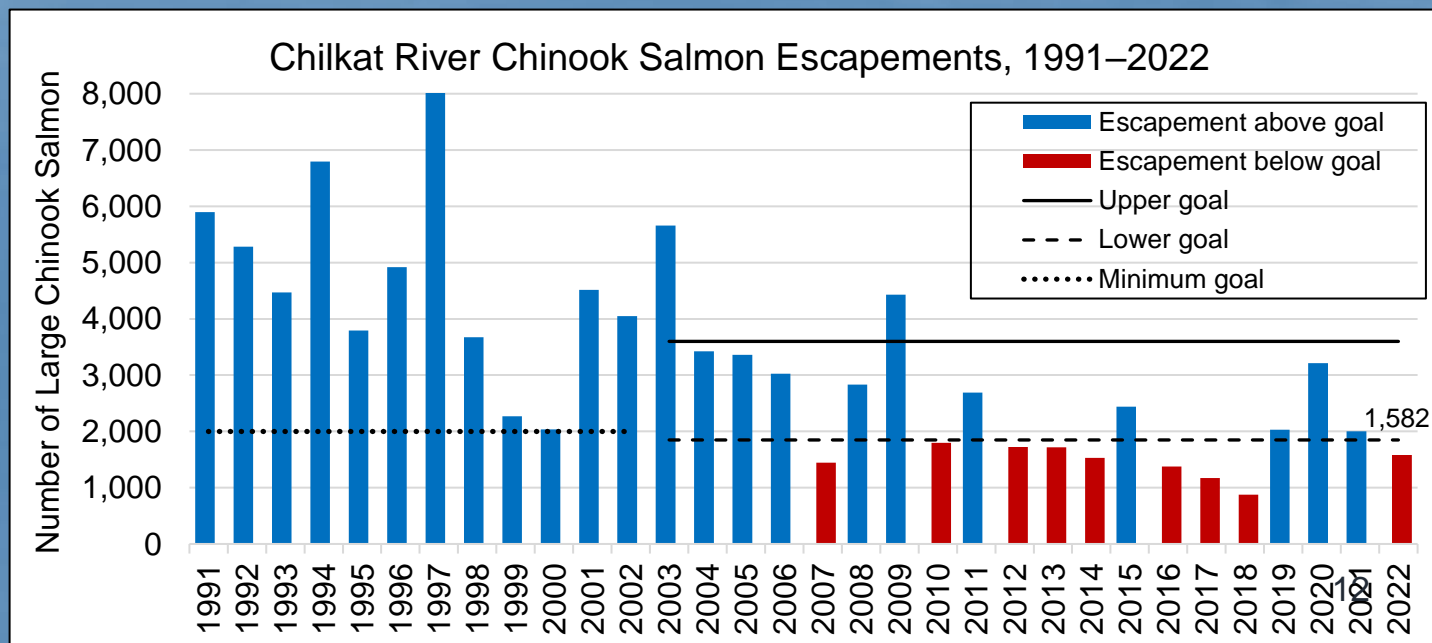
Chilkat Chinook salmon age≥1.2 harvest estimates from CWT recoveries in all fisheries, 2005-2022

Fishery	2005	2006	2007	2008	2009	2010	2011	2012	2013	2014	2015	2016	2017	2018	2019	2020	2021	2022
TROLL	280	293	244	501	244	260	246	272	40	0	105	36	102	0	0	10	11	15
SPORT	298	257	260	32	133	292	238	242	135	309	109	102	47	135	0	10	34	0
NET	224	157	131	285	37	439	428	273	152	574	318	7	11	69	90	59	28	18
SUBSISTENCE	77	96	64	50	75	85	114	96	65	79	15	14	0	3	0	3	2	0
Total	879	804	699	870	489	1,076	1,025	883	392	962	547	155	160	113	90	79	75	33

CHILKAT RIVER CHINOOK SALMON HARVEST AND ESCAPEMENT



Note: Harvest estimates are expanded from CWT recoveries. Percentages are harvest rates for Chilkat River Chinook Salmon.



➤ **2022 Preseason total run forecast: 1,550 large (1.3 and older fish)**

➤ **Postseason preliminary escapement estimate: 1,582 Chinook salmon (below BEG range of 1,750–3,500 large fish)**

➤ **2023 Total Run Forecast? TBA**

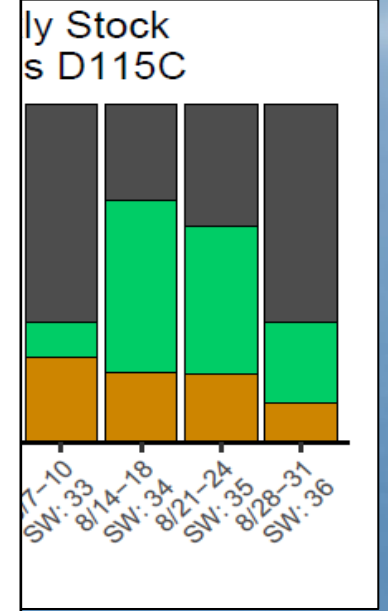
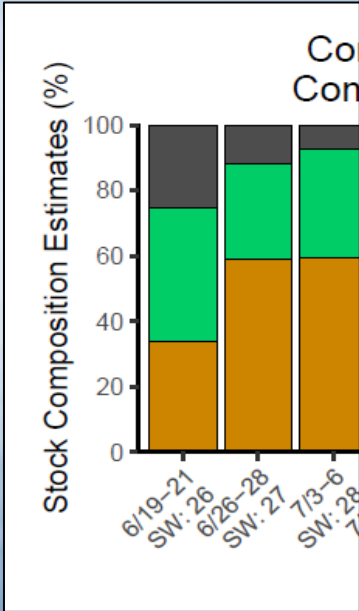
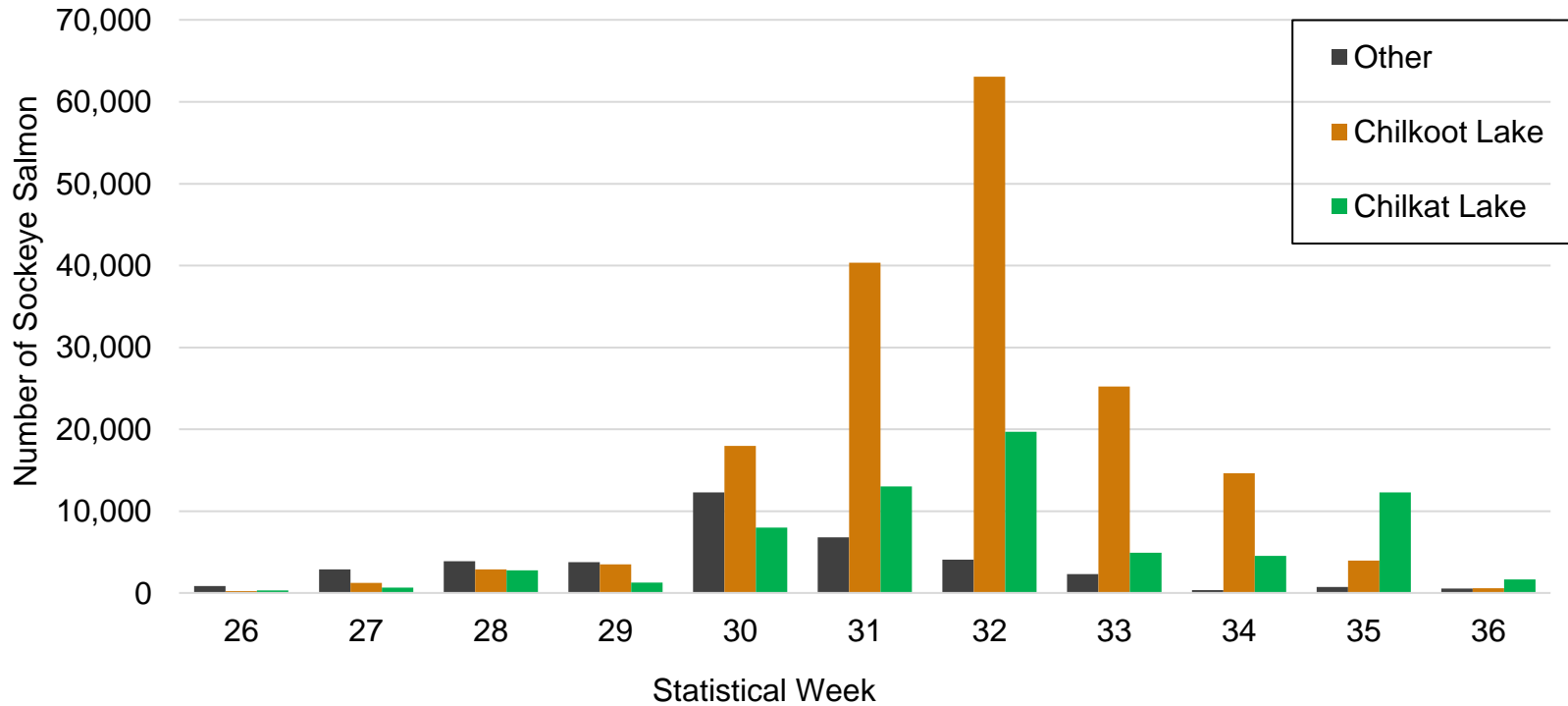
2022 GSI RESULTS FOR CHINOOK SALMON

Waiting on results from GCL...



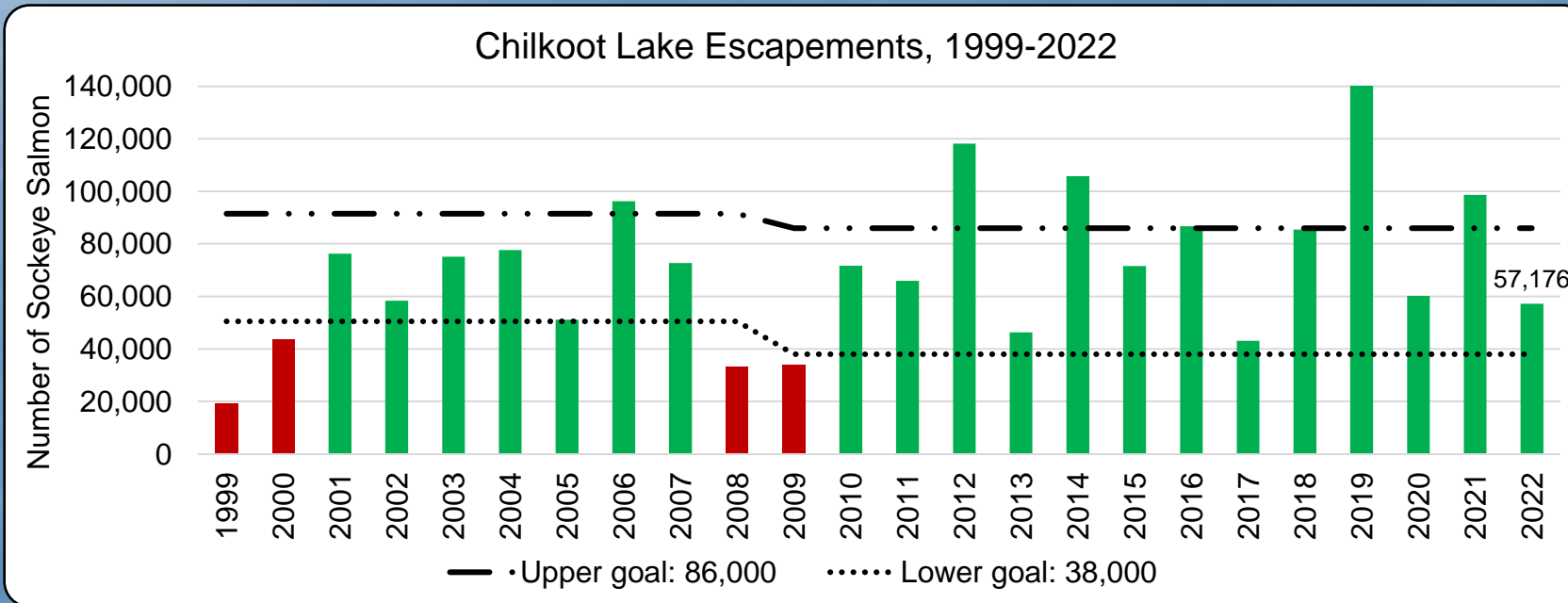
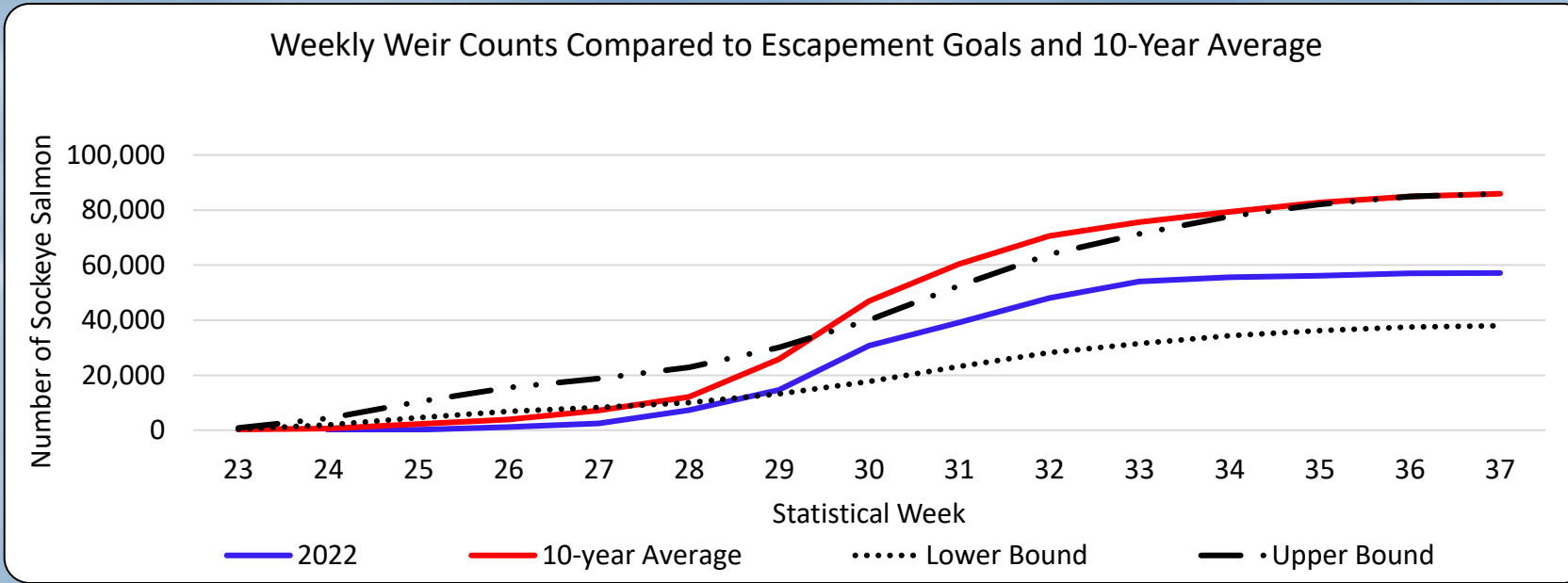
2022 PRELIMINARY GSI RESULTS FOR SOCKEYE SALMON

Comparison of Weekly Stock Composition in District 15

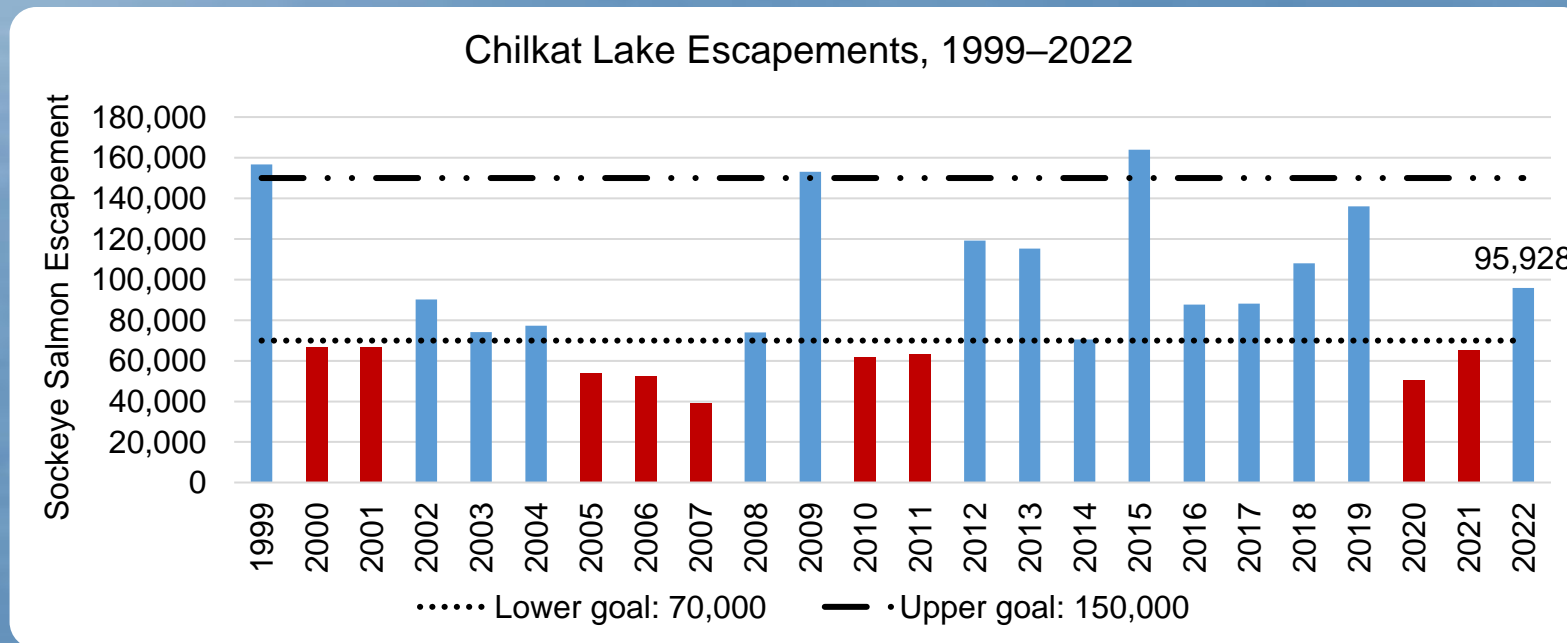
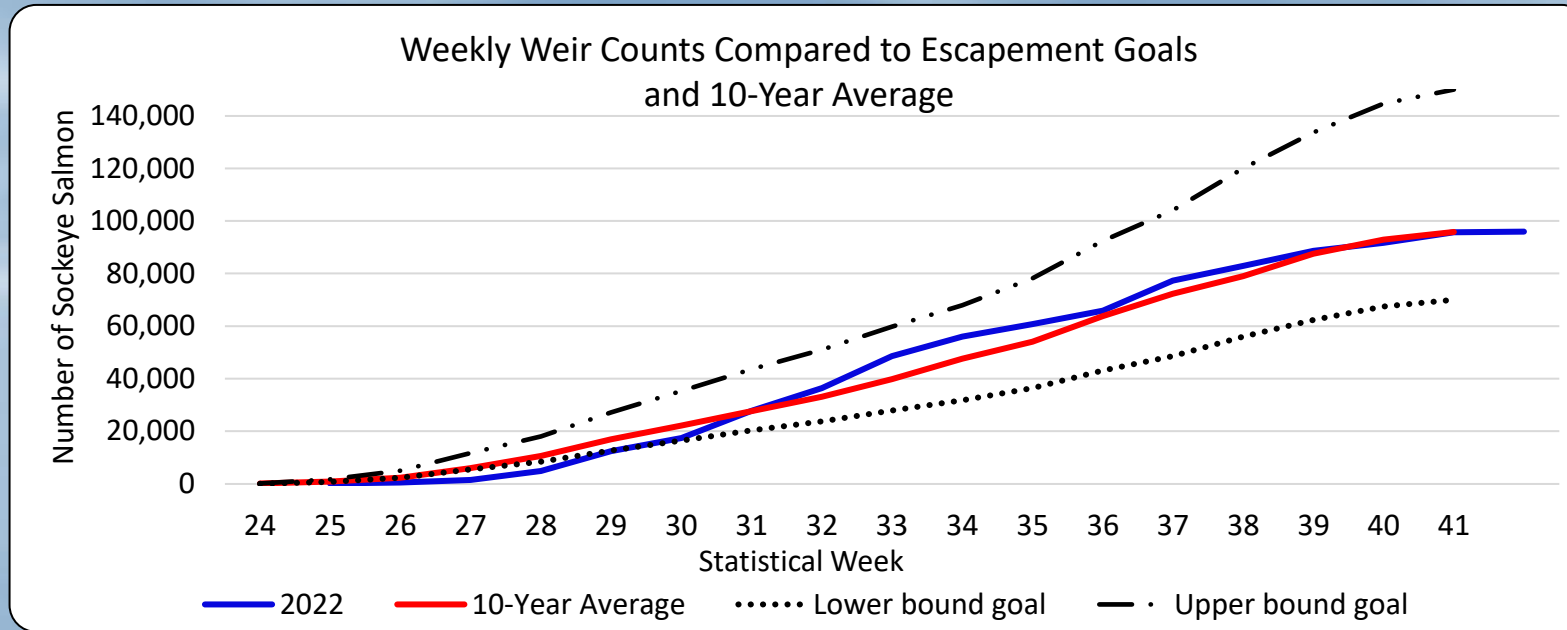


- **Chilkoot Lake stock: 174,000 fish; 62% of total harvest**
- **Chilkat Lake stock: 69,200 fish; 25% of total harvest**
- **Other stocks: 38,500 fish; 14% of total harvest**

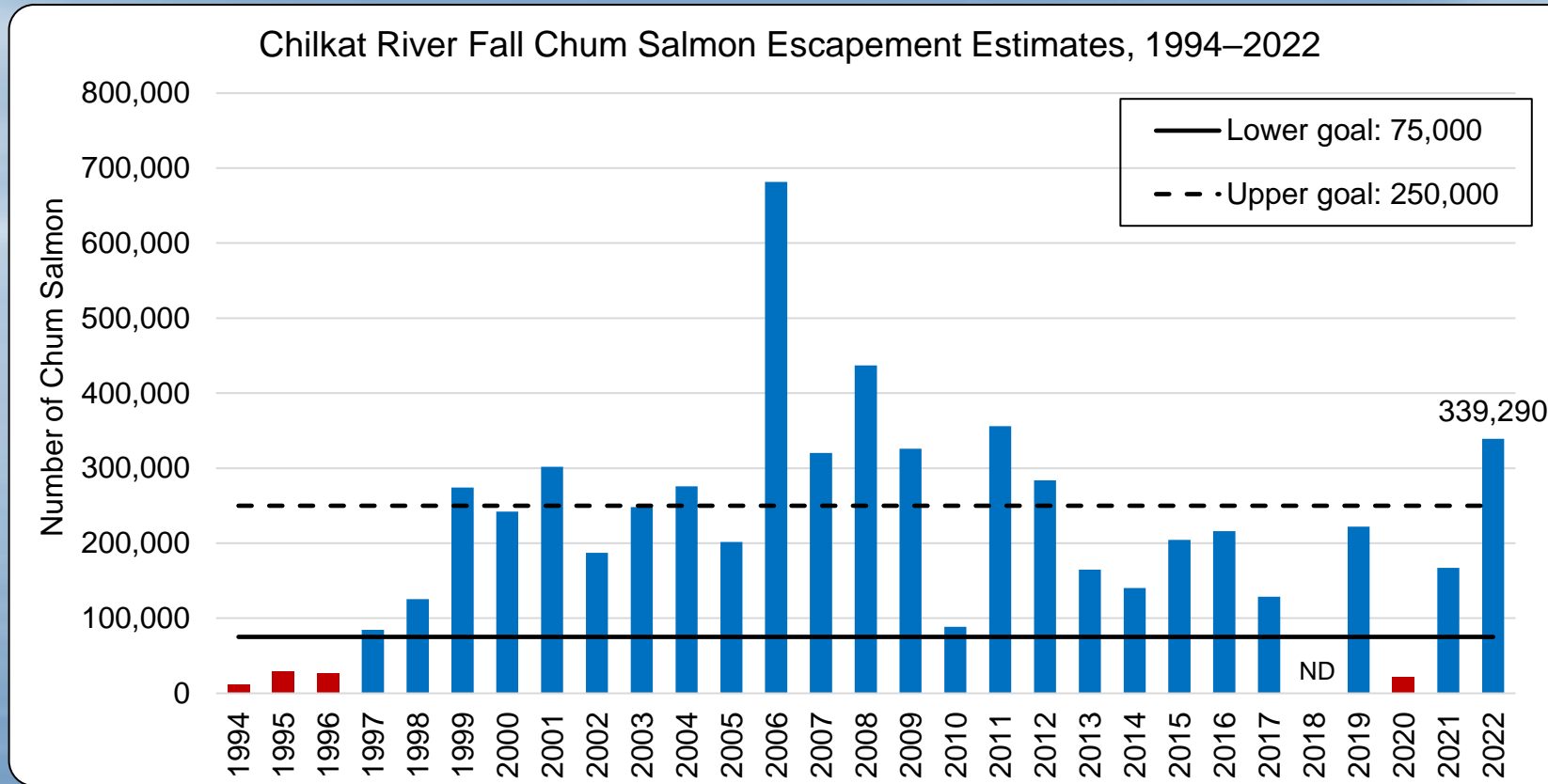
CHILKOOT LAKE SOCKEYE SALMON ESCAPEMENT



CHILKAT LAKE SOCKEYE SALMON ESCAPEMENT

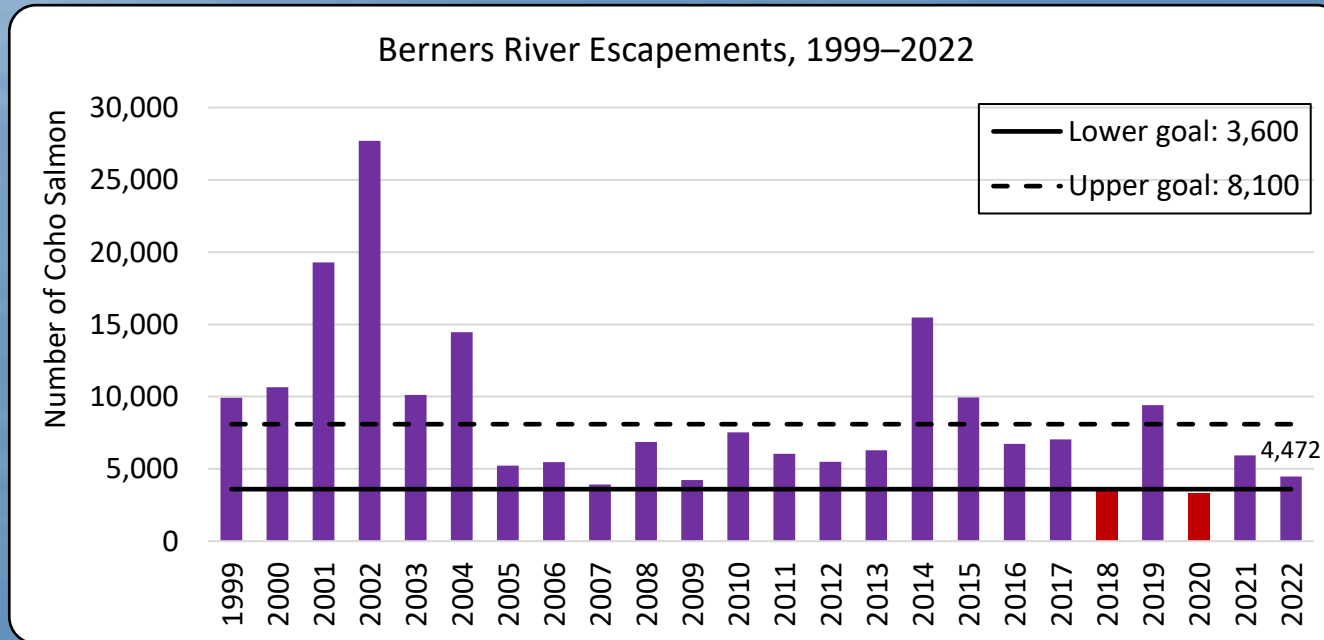
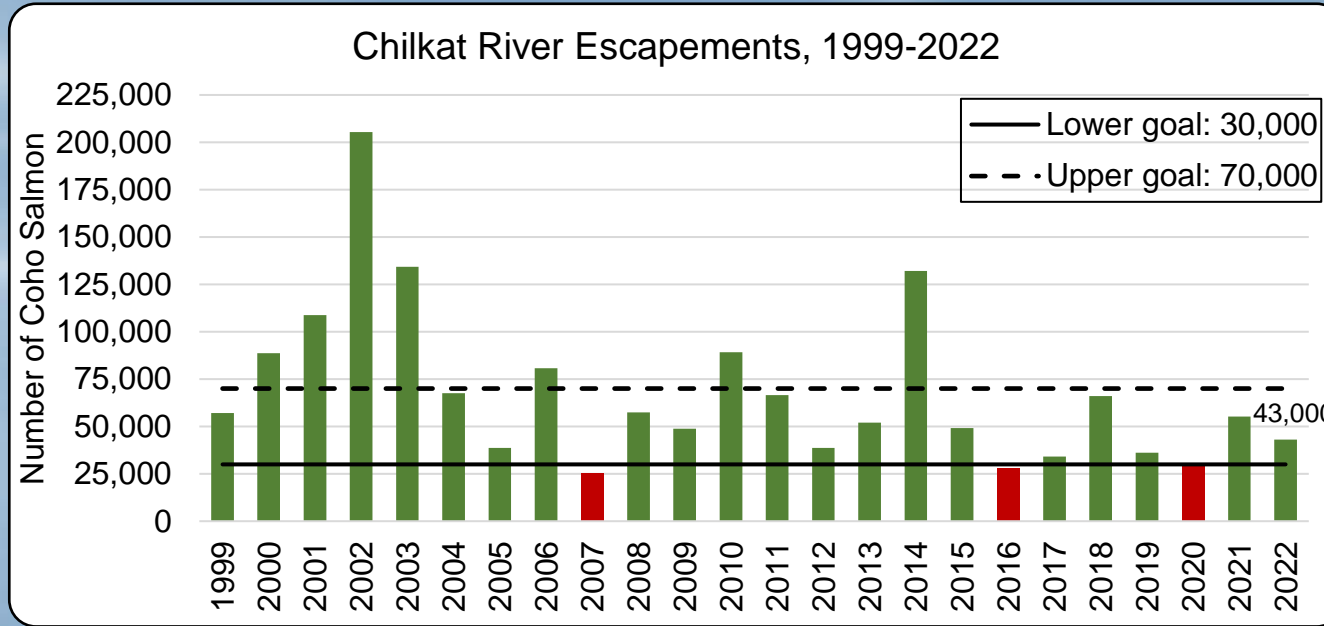


CHILKAT RIVER CHUM SALMON ESCAPEMENT



- Escapements are estimated from an expansion of total fish wheel catches
- 2022 Total Chilkat River fish wheel catch = 5,259 chum salmon
- 10-year average = 3,200 fish

COHO SALMON ESCAPEMENTS



Questions?

