

Districts 6 and 8 Drift Gillnet Fisheries 2022 Postseason Report



Paul Salomone
Alaska Department of Fish and Game
Gillnet Task Force Meeting
November 29, 2022



Figure 1.

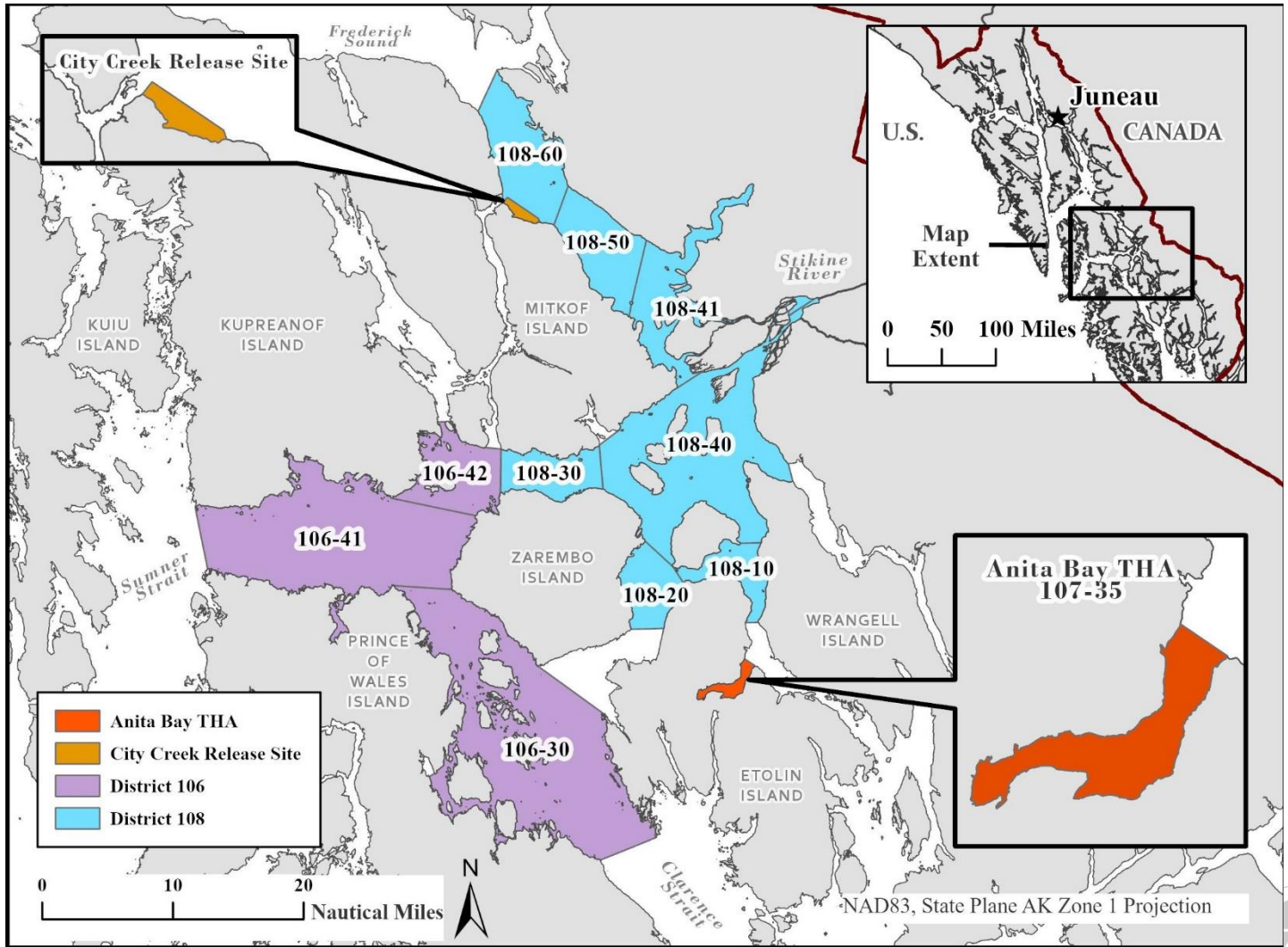
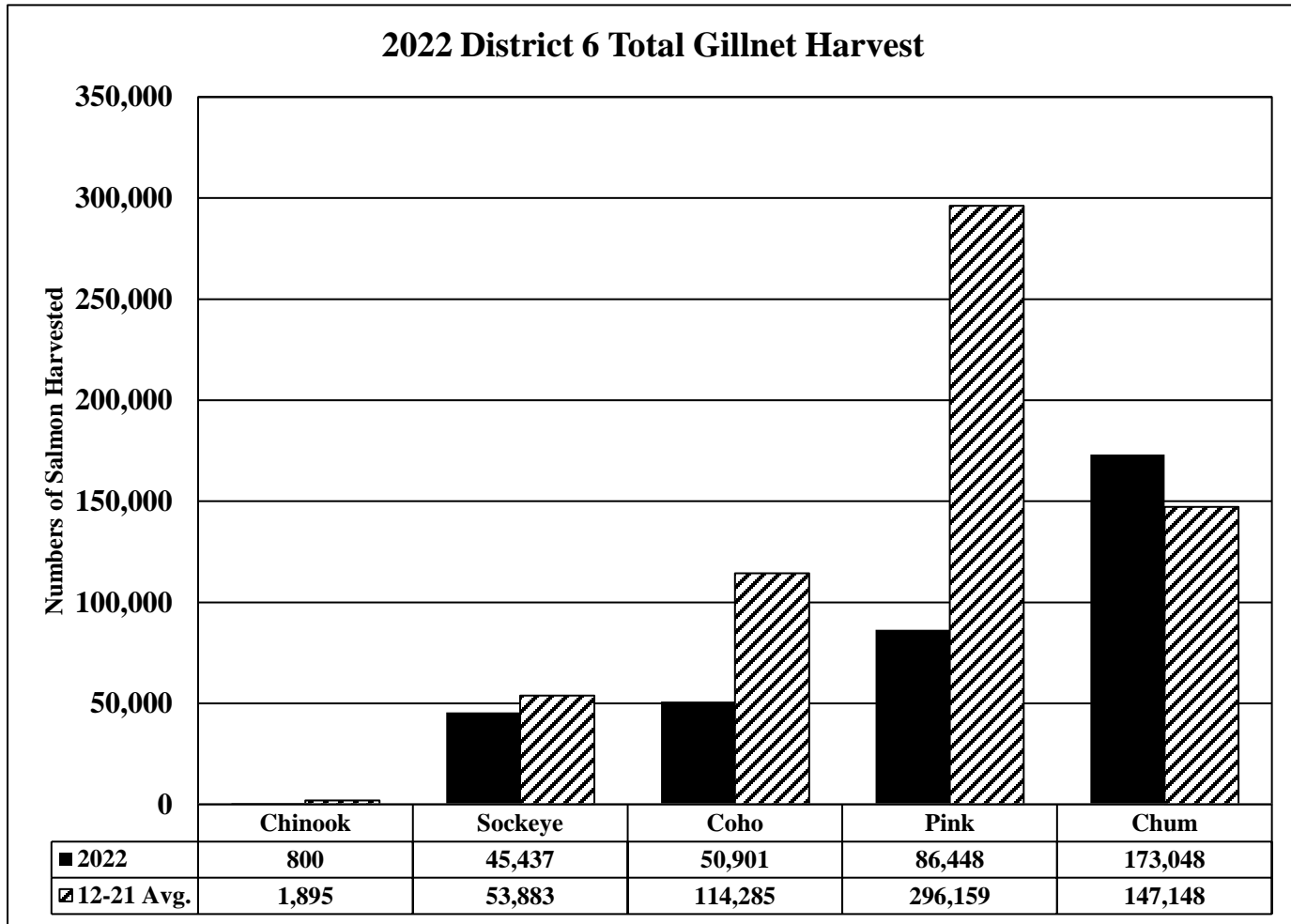


Figure 2.



- Chinook, coho, and pink salmon well below average
- Sockeye near average
- Chum salmon harvest above average



District 6 Preliminary Stock Composition

- Chinook Salmon
 - Estimated Alaska hatchery contribution of 260 fish or ~33% of harvest (CWT)
- Sockeye Salmon
 - Estimated at 7,500 Stikine River fish or 17% of harvest (GSI)
- Coho Salmon
 - Estimated Alaska hatchery contribution of 23,000 fish or ~45% of harvest (CWT)



Figure 3.

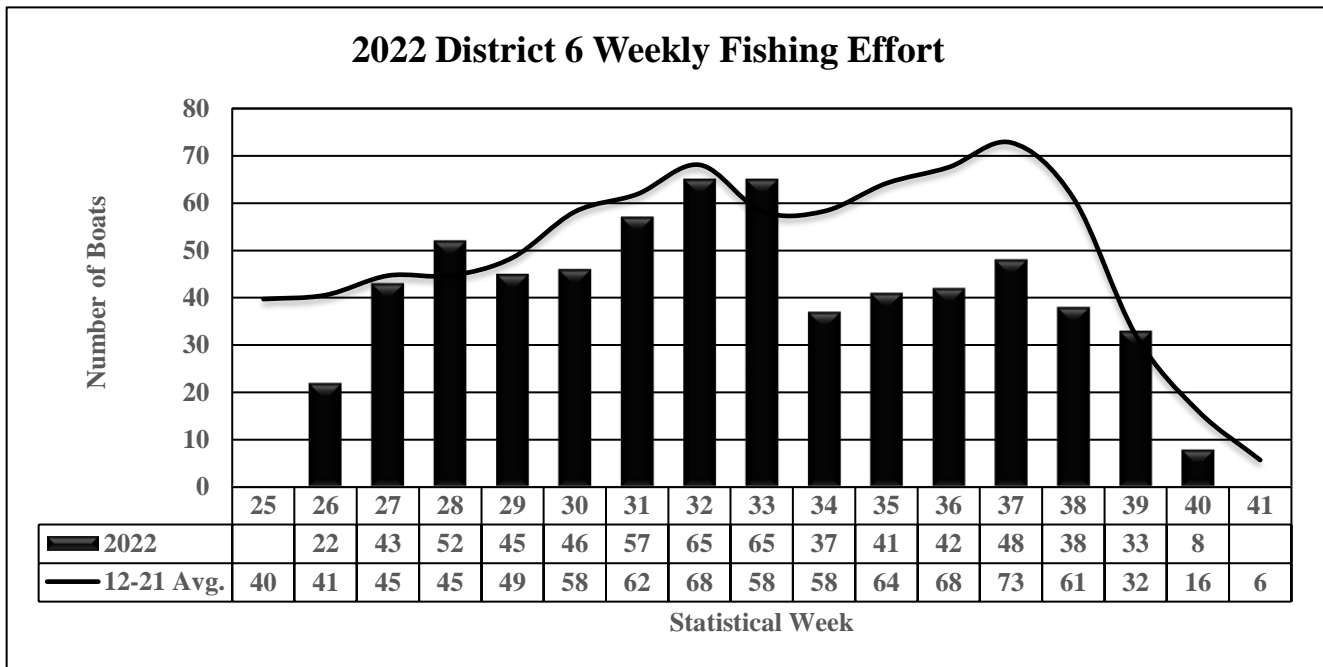
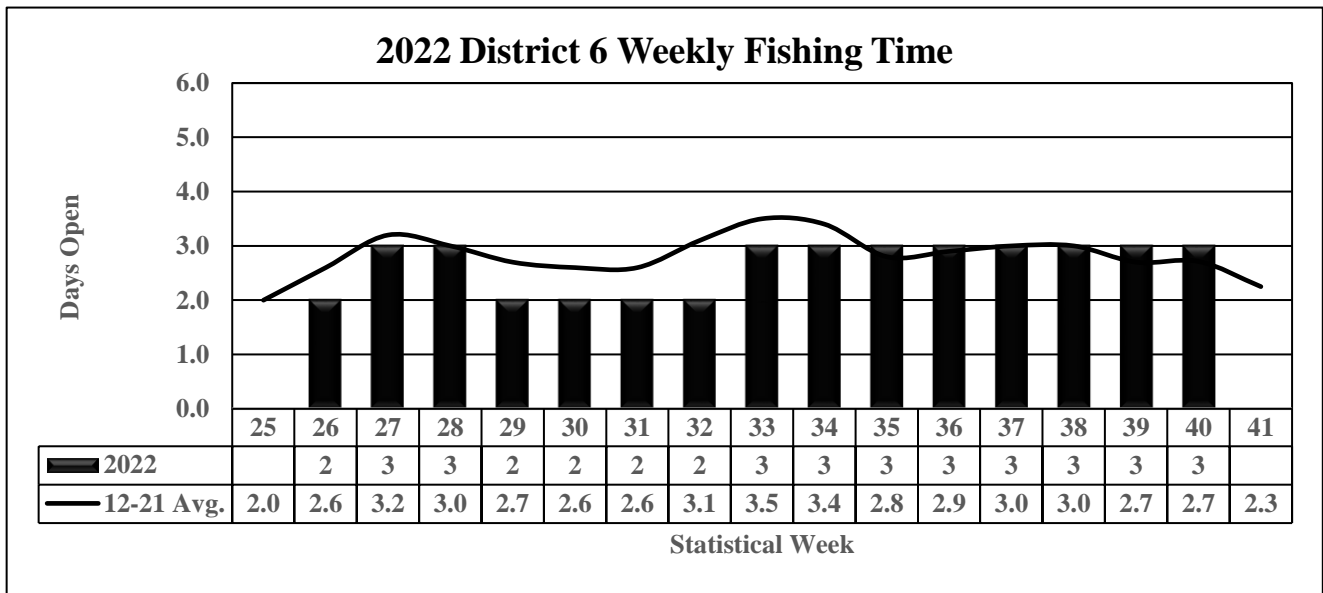


Figure 4.



2022 District 8 Total Gillnet Harvest

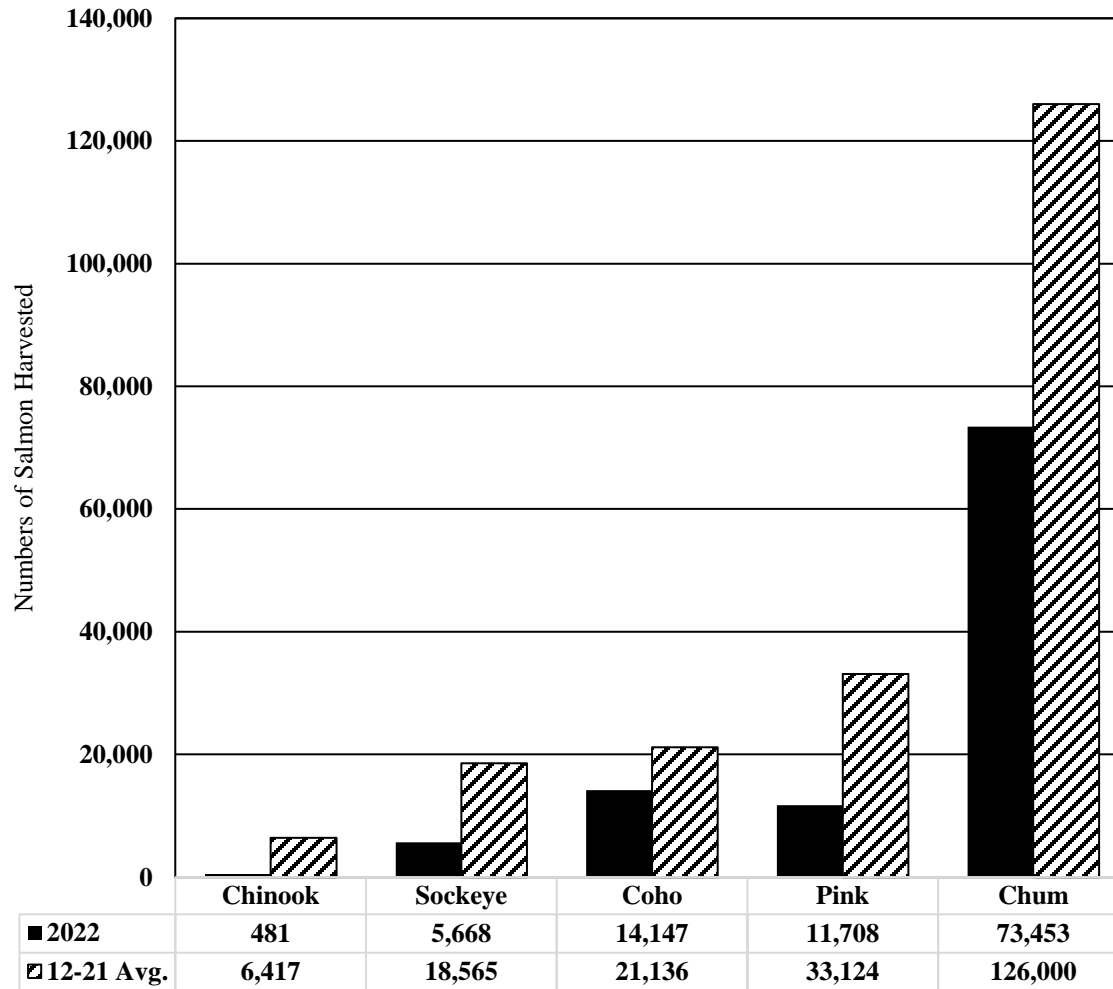


Figure 5.

- Harvest for all species well below average but improved over 2021



District 8 Preliminary Stock Composition

- Chinook Salmon
 - Estimated Alaska hatchery contribution of 150 fish or ~30% of harvest (CWT)
- Sockeye Salmon
 - Estimated 3,900 Stikine River fish or 68% of harvest
- Coho Salmon
 - Estimated Alaska hatchery contribution of 3,300 fish or ~23% of harvest (CWT)



Figure 6.

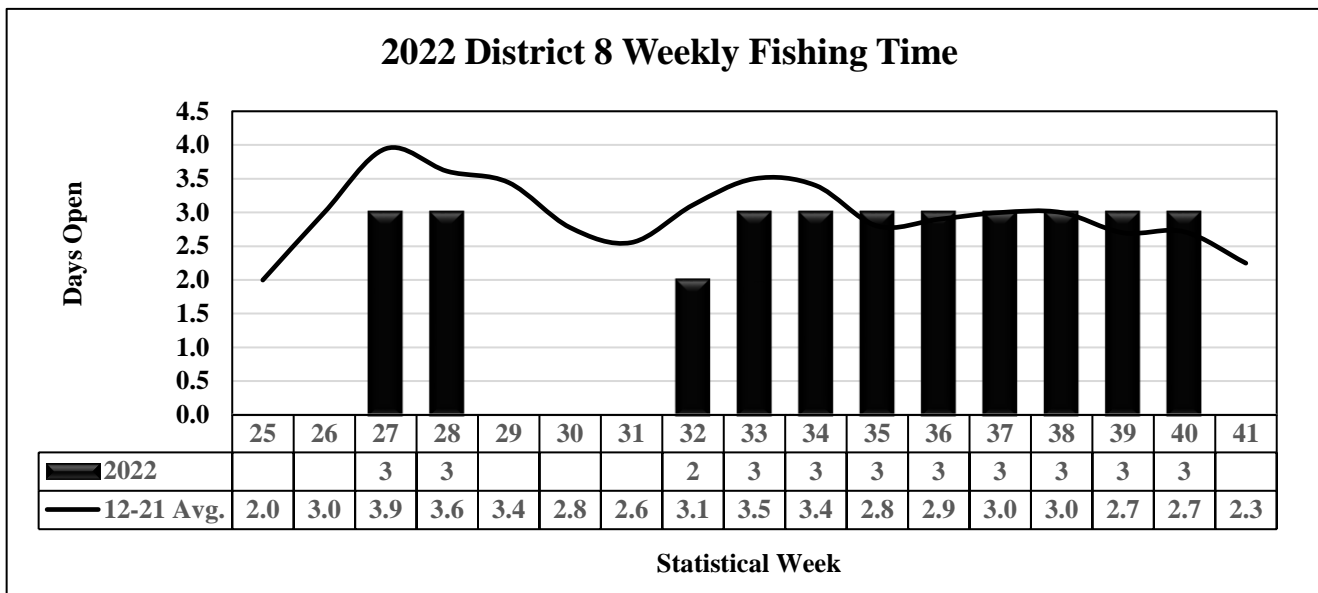
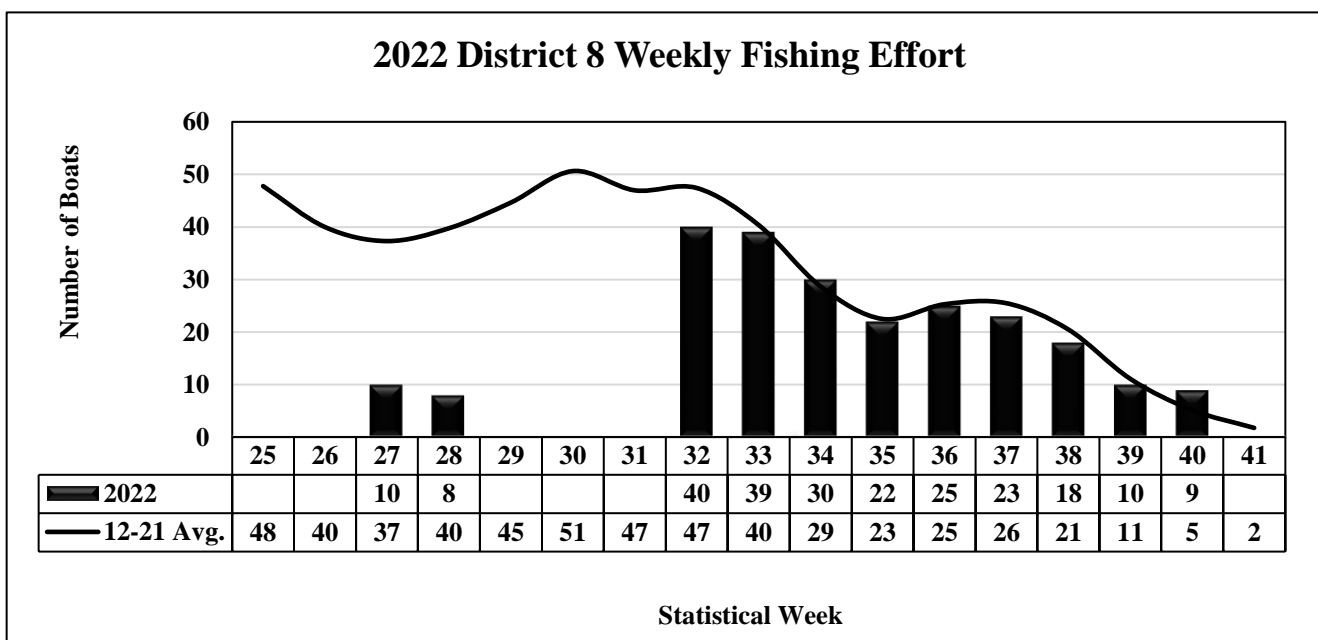
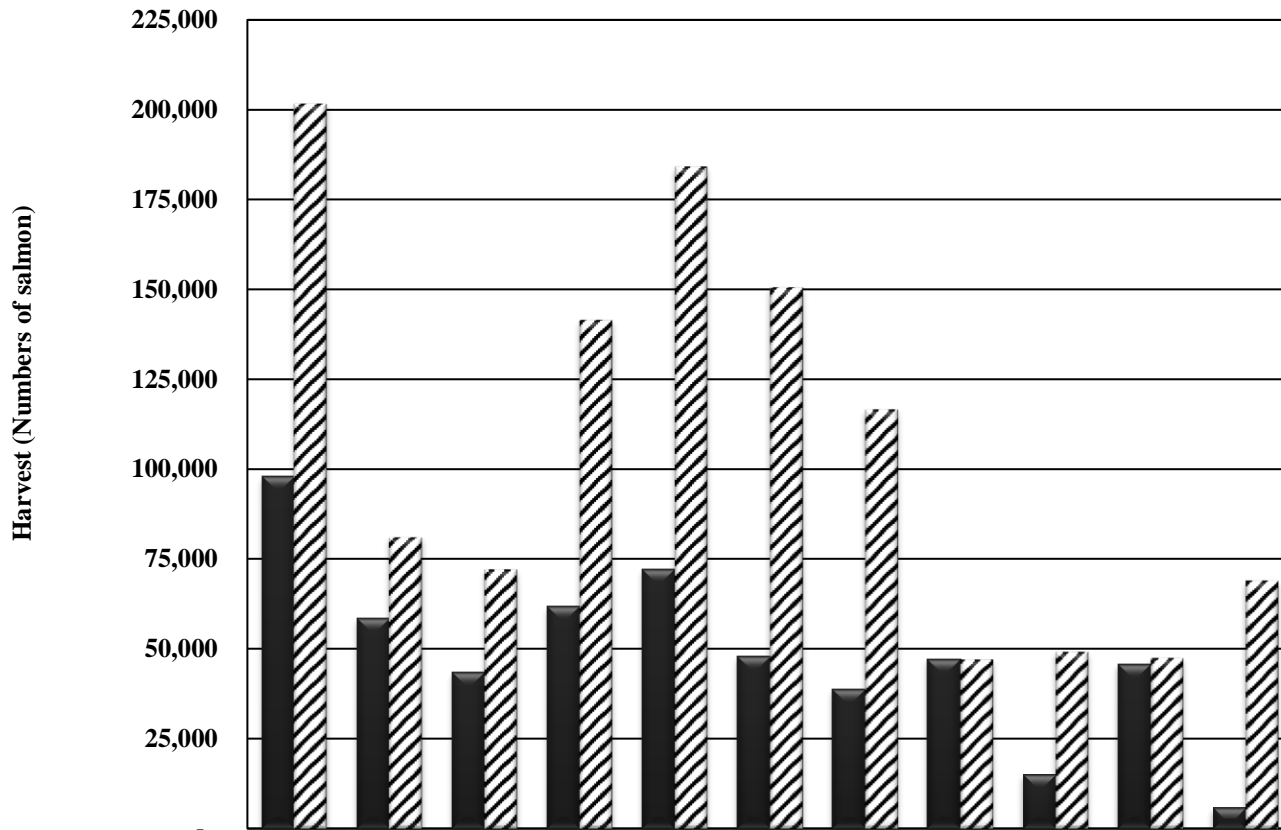


Figure 7.



Anita Bay and Gillnet Statistical Areas 108-10 & 20 Chum Harvest, 2012-2022



	2012	2013	2014	2015	2016	2017	2018	2019	2020	2021	2022
■ Anita Bay Drift Gillnet	97,874	58,456	43,488	61,881	72,204	47,782	38,786	47,149	15,034	45,736	5,814
▨ District 108-10&20 GN	201,53	80,965	72,067	141,42	184,09	150,57	116,64	46,972	49,154	47,398	69,003

Figure 8.

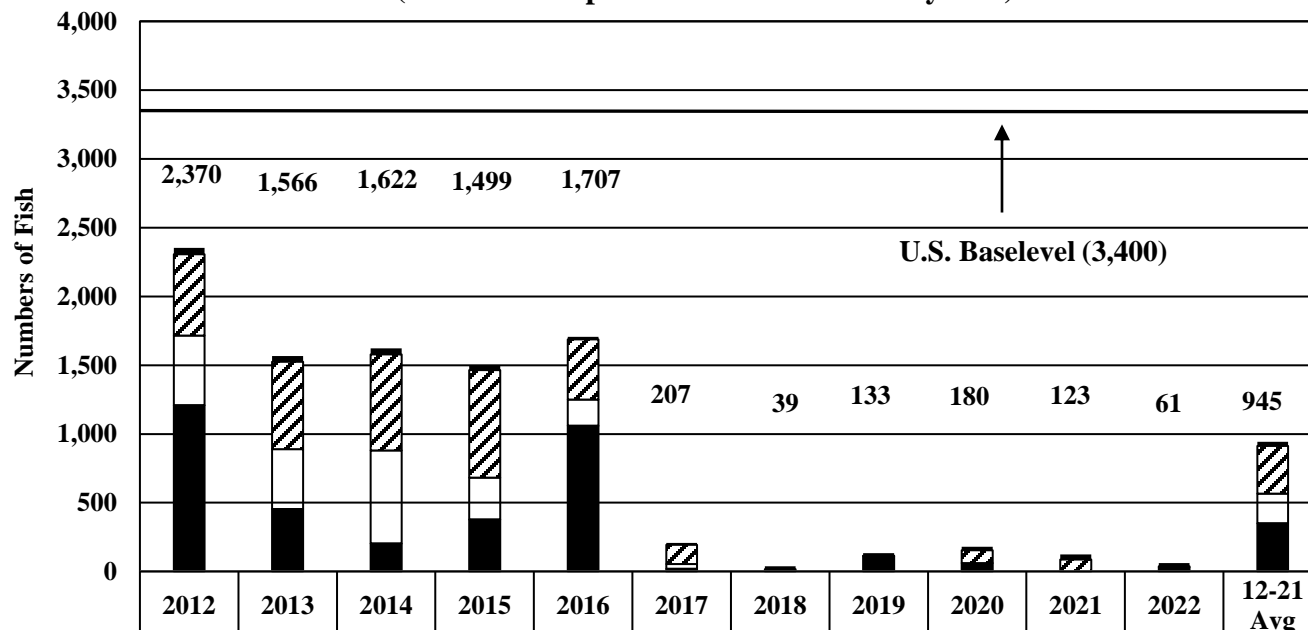


Chinook Salmon Management

- Preseason forecast of 7,400 large Stikine Chinook salmon. Inseason projections were below 10,000
- No AC, Conservation measures implemented in all U.S. fisheries.
 - Gillnet
 - Delayed opening until SW 26 in D-106, SW 27 in D-108
 - Maximum mesh size of 6 inches through SW 28 in both districts
 - Troll
 - Spring troll fisheries did not open in 2022
 - Non-retention of Chinook salmon for the first summer troll opening
 - Sport
 - Chinook salmon non-retention period from April 1 through July 14
 - Bag and possession limit was 2 fish for residents, 1 fish for nonresidents (3 fish annual limit), City Creek release area 1 fish for residents and nonresidents
 - Subsistence
 - Did not open until June 21
- Postseason Stikine Chinook salmon run size estimate: around 9,300 fish
 - Estimated escapement: less than 9,000 fish
 - Gillnet harvest of 31 large Stikine River Chinook salmon through SW29



District 8 SW's 18-29 Harvest of Stikine River Large Chinook Salmon, 2012-2022
 (Gillnet and Sport Harvest estimated by GSI)



	2012	2013	2014	2015	2016	2017	2018	2019	2020	2021	2022	12-21 Avg
■ Subsistence	46	41	44	34	20	14	22	19	25	35	24	30
▨ Sport	591	636	697	781	438	139	12	2	93	88	6	348
□ Troll	506	434	677	306	190	35	0	0	0	0	0	215
■ Gillnet	1,209	455	204	378	1,060	19	5	112	62	0	31	350

Figure 9.



2012-2022 Canadian Total Harvest of Large Stikine Chinook Salmon

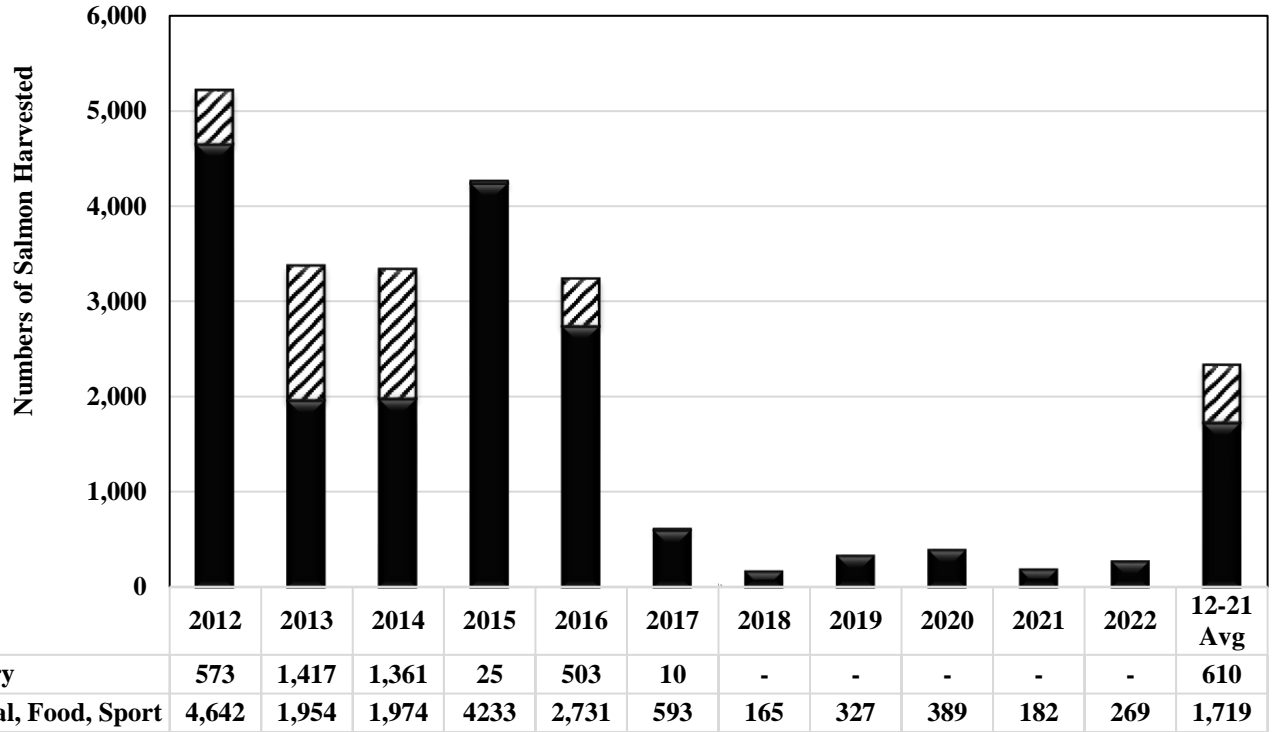


Figure 10.



Stikine River Chinook Salmon Harvest and Escapement, 2012-2022

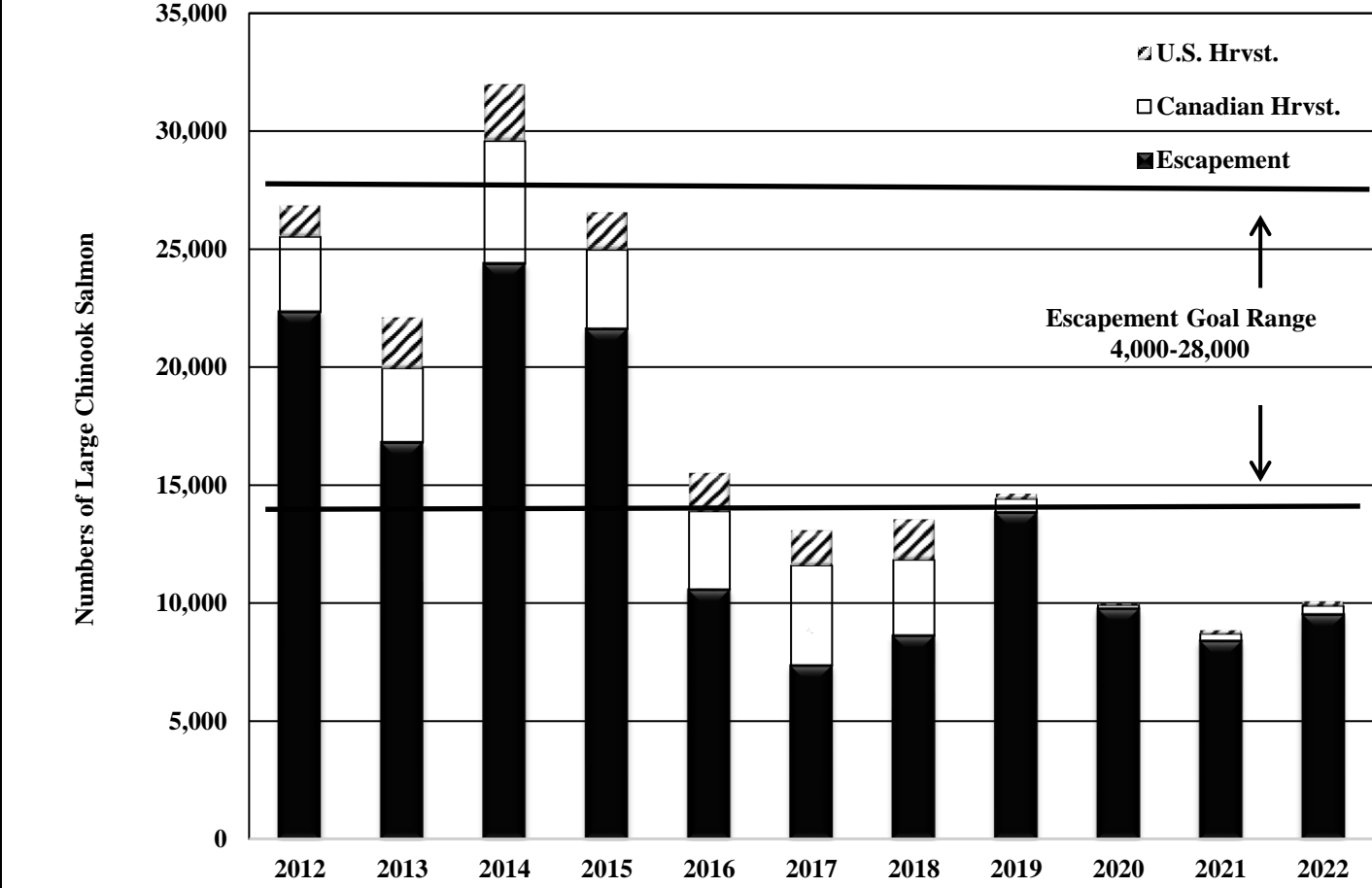


Figure 11.



Stikine Sockeye Salmon

- Preseason Forecast: 63,000 fish (42,000 Tahltan, 21,000 mainstem)
 - Harvest Share Changed in 2019 from 50/50% TO 53% U.S., 47% Canada
 - U.S. AC 9,500 fish (all Tahltan, no AC for mainstem)
- Preliminary postseason run size estimated at ~100,000 (will change with GSI)
 - U.S. AC ~24,400 fish
 - Preliminary U.S. Harvest ~12,500 Stikine origin sockeye (11,400 in commercial gillnet fishery and 1,100 in Federal Stikine subsistence fishery)
 - Canada Harvest ~11,300 Stikine origin sockeye salmon (5,900 directed commercial, 135 incidental in directed coho fishery, 5,400 in the FN food fishery)



Sockeye Salmon Management

- SW's 26 through 32 (June 19–August 6)
- District 6 Chinook salmon conservation
 - Delayed opening for one week (SW 26), open for two days
 - Initially opened for two days then extended for 24 hours in SW's 27 and 28 because of sockeye abundance
 - 6-inch maximum mesh restriction through SW 29
- District 6 Sockeye salmon conservation
 - Restricted to two days: SW's 29-32 MacDonald Lake action plan
- District 8 Sockeye salmon conservation
 - Closed until SW-27, then opened for two days in very limited area
 - Extended 24 hours because of sockeye salmon abundance and low effort
 - Opened in SW-28 for two days in very limited area
 - Extended 24 hours because of sockeye salmon abundance and low effort
 - 6-inch maximum mesh restriction in effect in SW 27 and 28
 - Closed SW 29-31 to conserve Chinook and Mainstem sockeye stocks, reopened in SW 32
- Tahltan sockeye above escapement goal range M/S appears below average, local stocks below to near average sockeye salmon abundance
 - District 6 harvest 45,400 SW's 26-37 (37,700 SW's 26-32)
 - District 8 harvest 5,700 SW's 27 & 28, 32-37 (4,600 in SW's 27 & 28)



Figure 12.

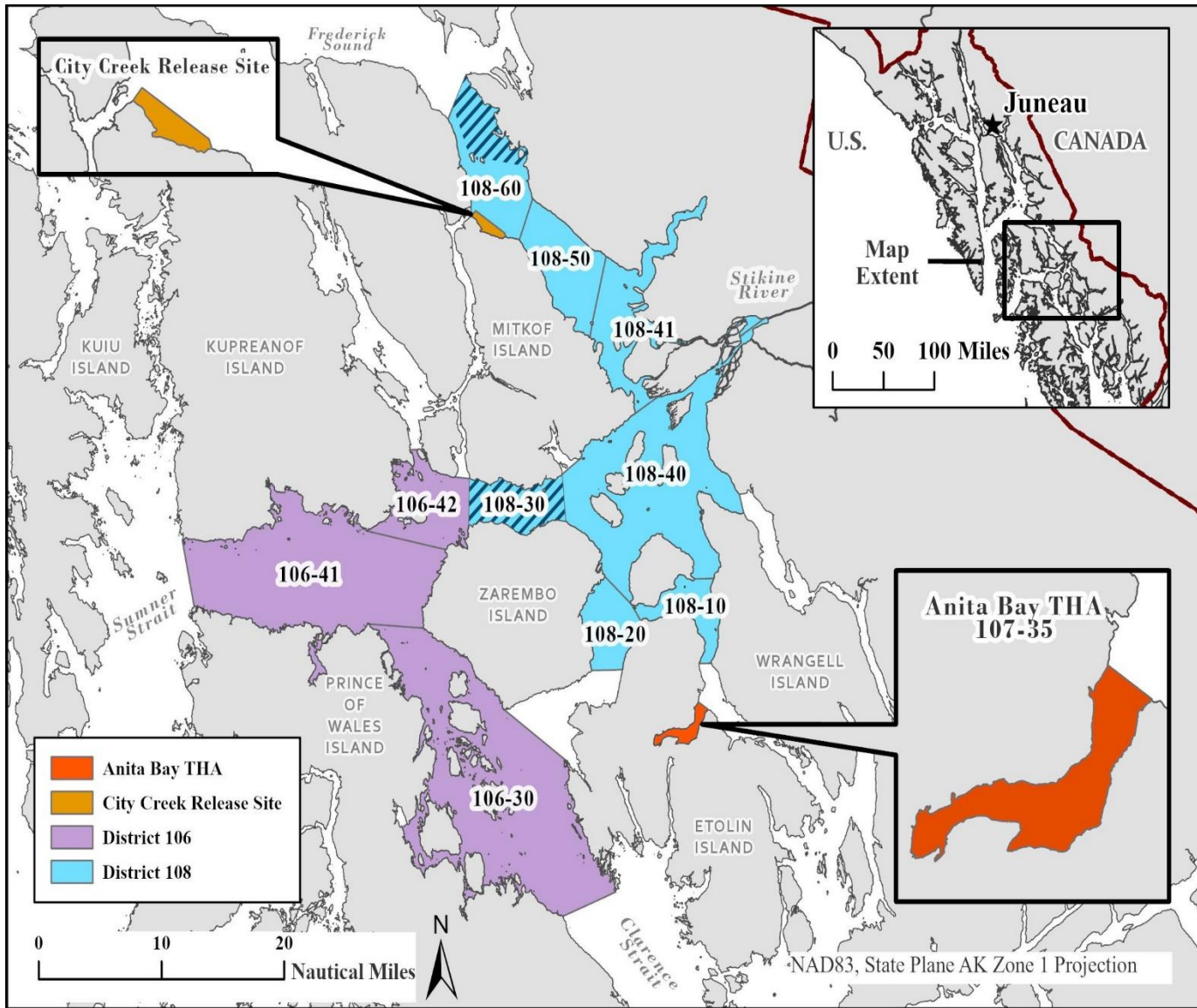


Figure 13.

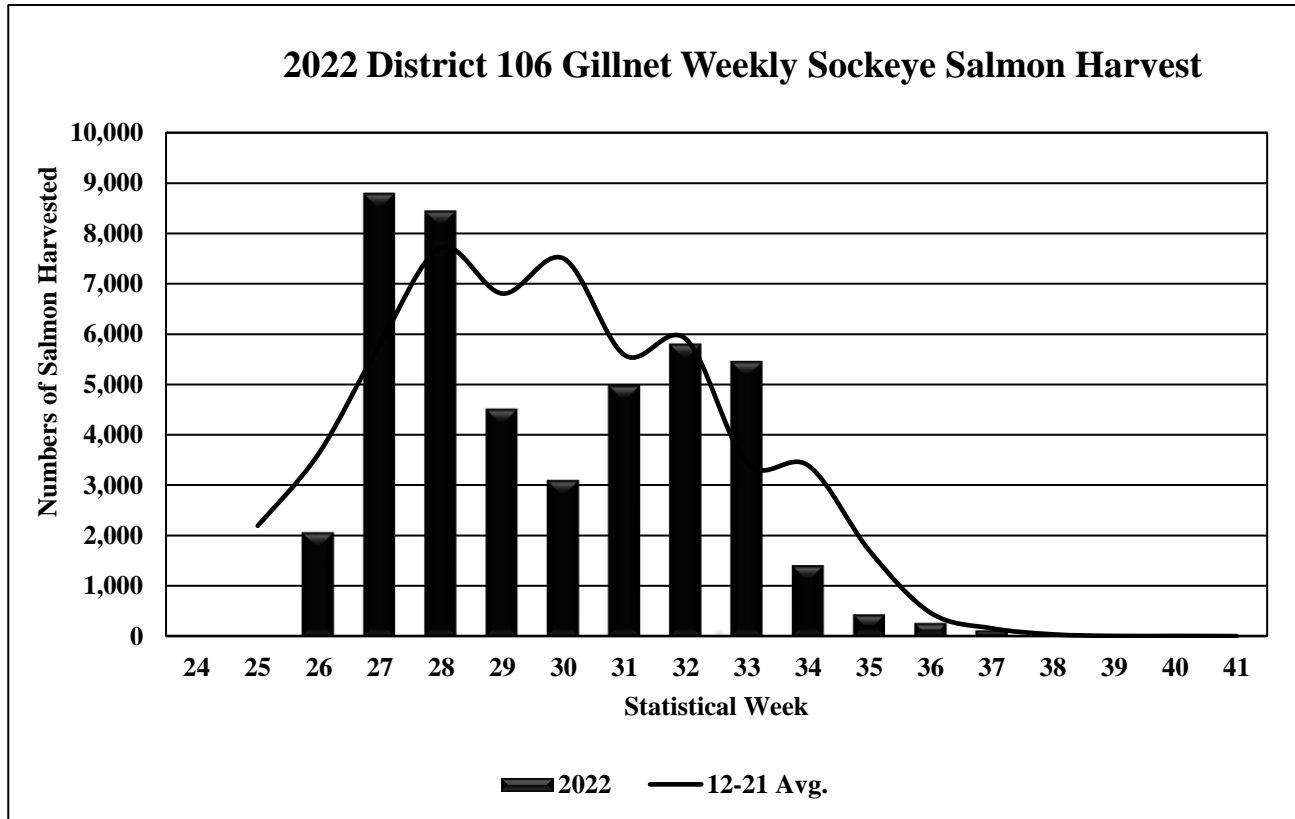
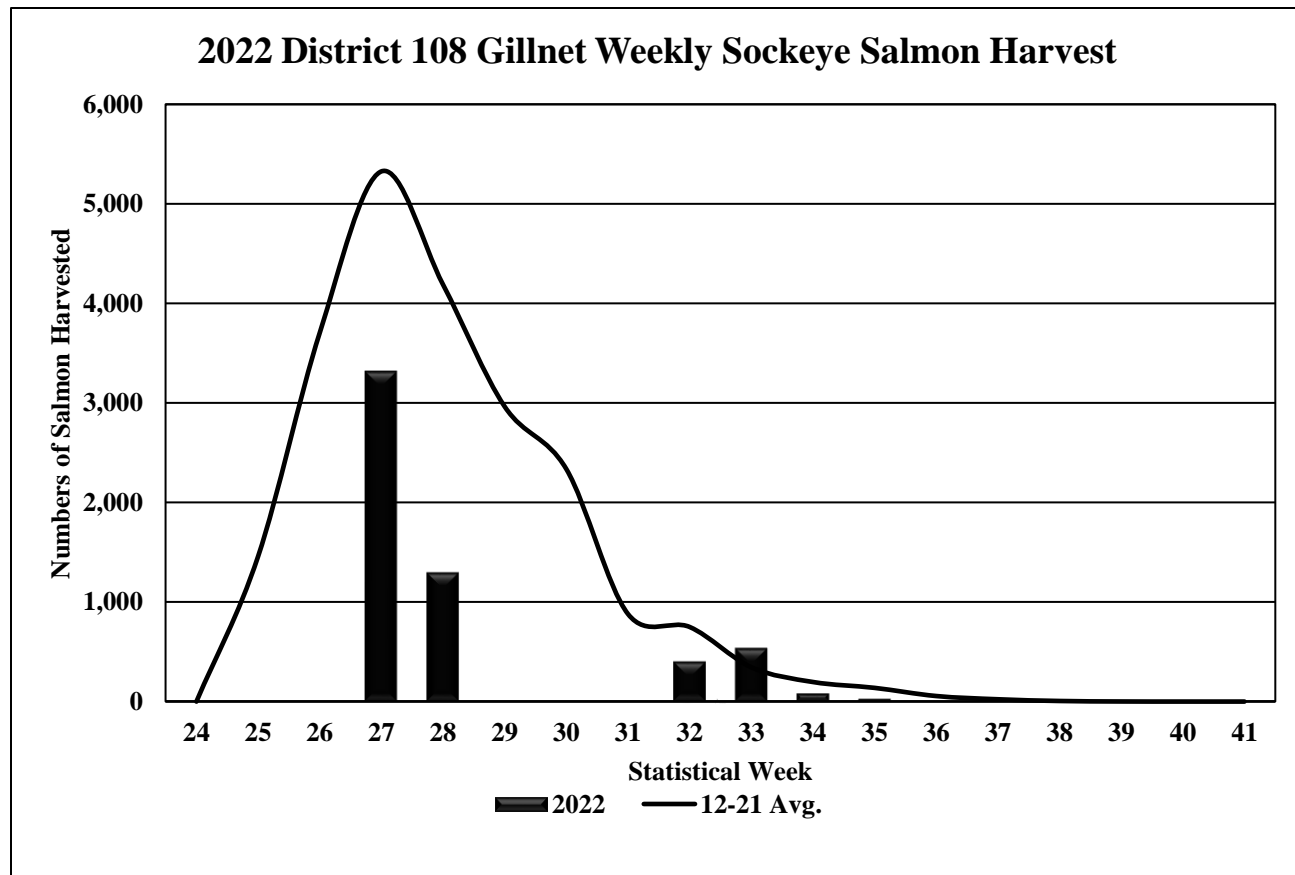


Figure 14.



Sockeye Salmon Escapement

- Stikine
 - Tahltan Lake escapement: 53,200 (above 18,000-30,000 goal range)
 - Mainstem: XX (20,000-40,000 goal range)
- Island Stocks
 - Near average and improved over 2021, except for Petersburg Creek
- McDonald Lake
 - 34,000 escapement 10k lower than 2021. Below 55,000-120,000 goal range



Pink Salmon Management

- SW's 32 through 35 (August 8–August 28)
- District 6
 - Fishing time near average
 - Effort below average
 - Pink salmon harvest below average
- District 8
 - Fishing time near average
 - Effort near average
 - Pink salmon harvest below average (except near average in SW's 33 and 34)
- Stock groups escapement within target range



Figure 16.

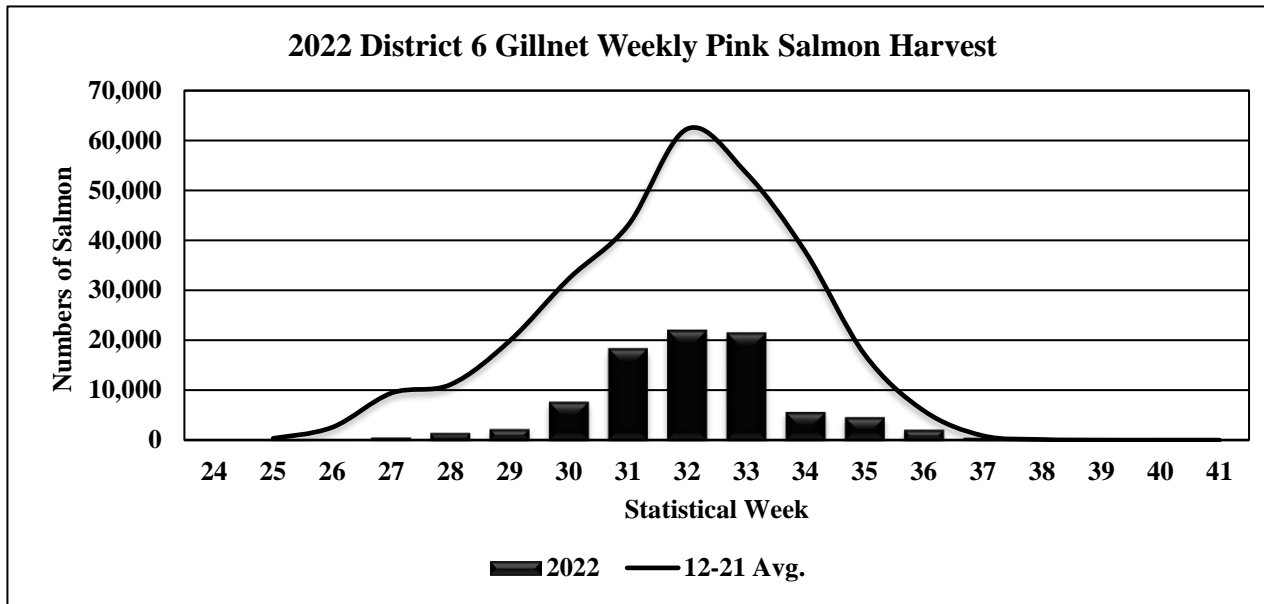
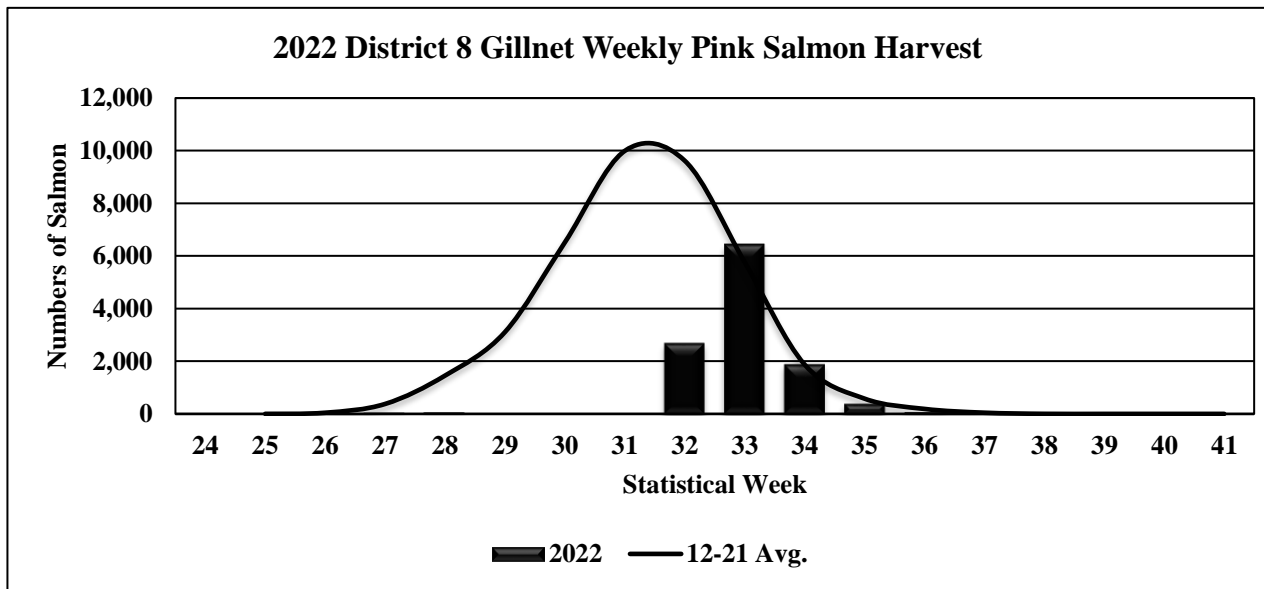


Figure 17.



Coho Salmon Management

- SW's 36 through 40 (August 28 – October 1)
- District 6
 - Below average effort
 - Average fishing time
 - Coho salmon harvest well below average except for SW 39 (high hatchery component)
 - Average to late run timing
 - Weak hatchery stocks
- District 8
 - Near average effort
 - Average fishing time
 - Coho salmon harvest below average except for SW's 39 and 40 (late and high hatchery component)
 - Harvest rates were variable
 - Run timing average to late
 - Weak hatchery stocks



Figure 18.

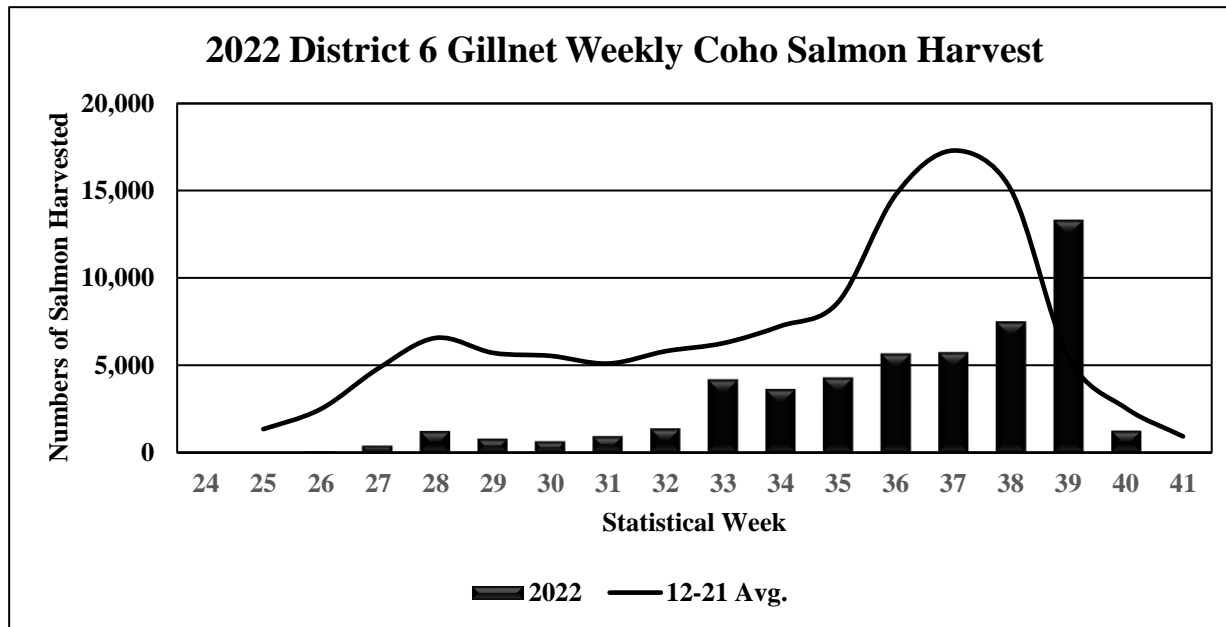
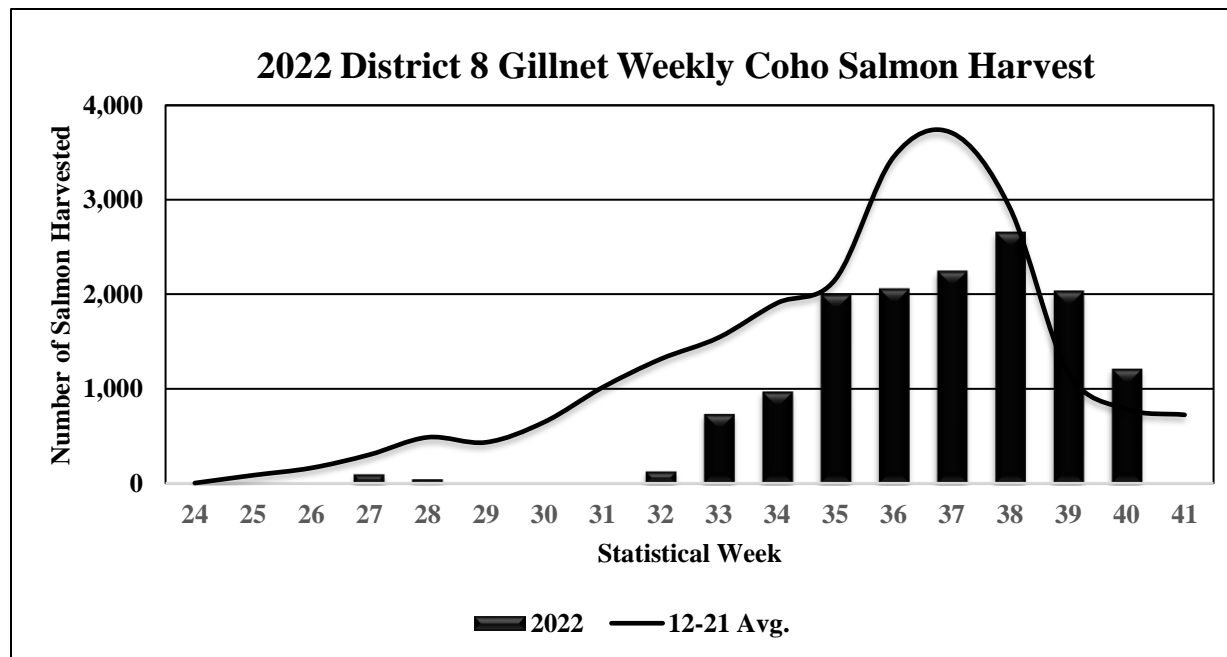


Figure 19.



District 6 Weekly Gillnet Coho Salmon Hatchery and Wild CPUE, 2022 vs 12-21 Avg.

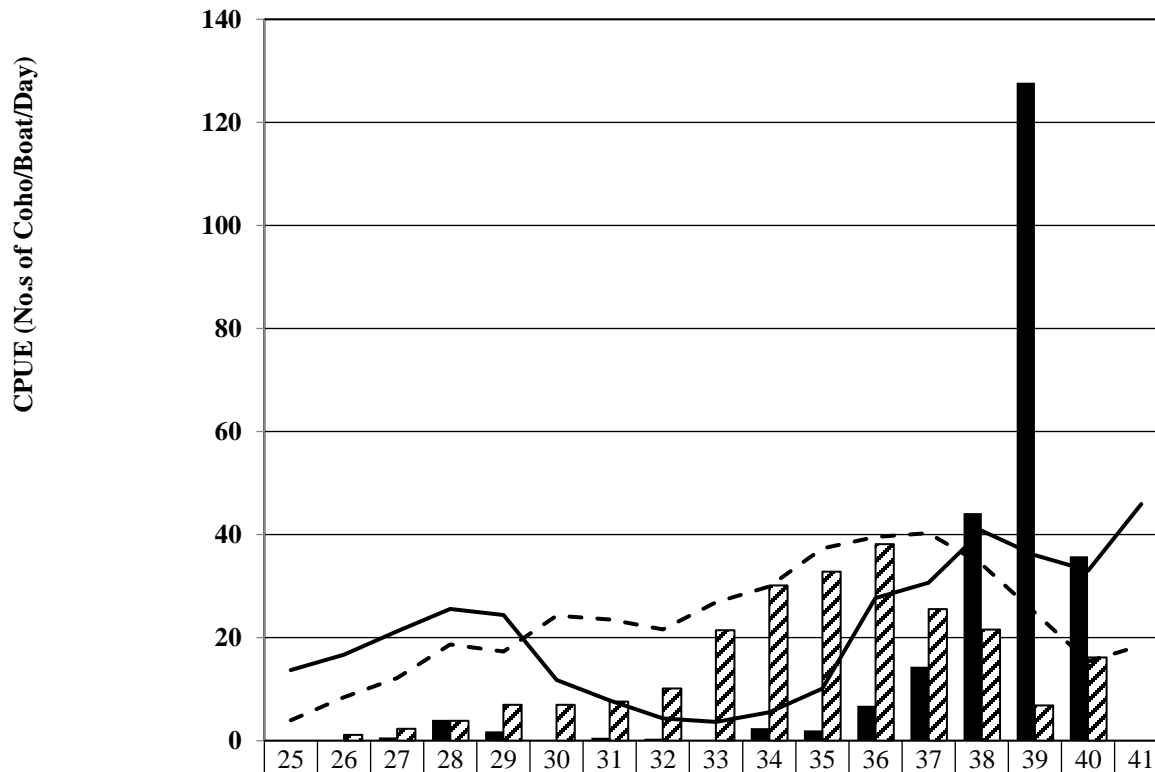


Figure 20.



District 8 Weekly Gillnet Coho Salmon Hatchery and Wild CPUE, 2022 vs 2012-2021 Avg.

CPUE (No.s of Coho/Boat/Day)

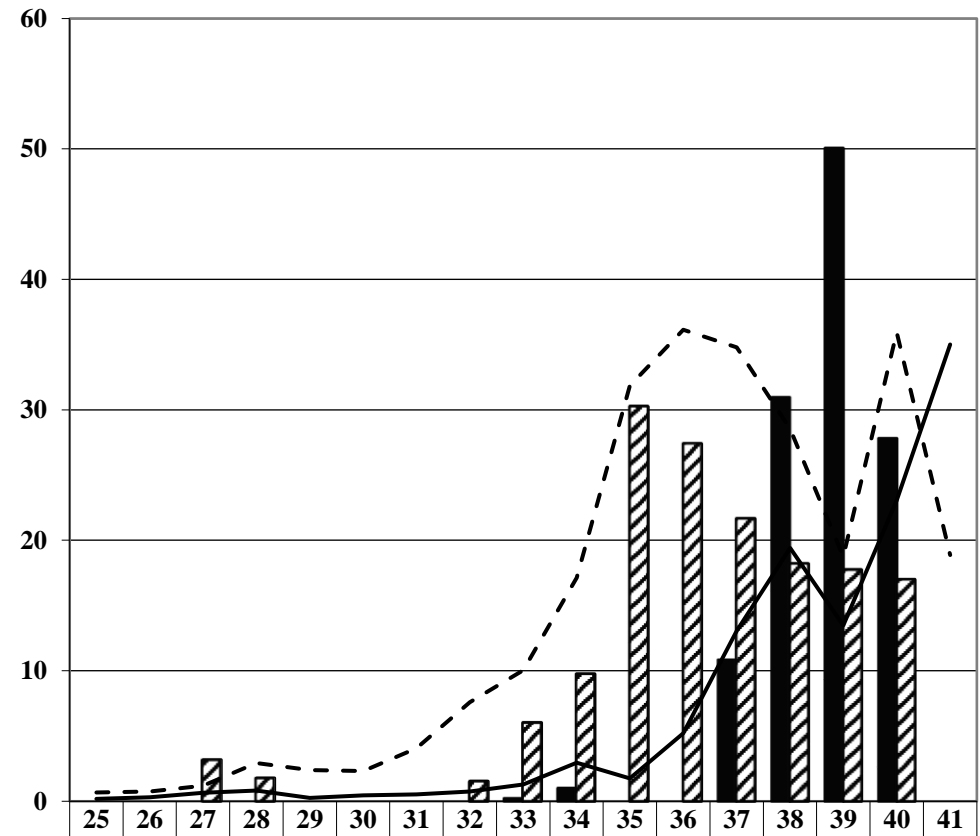


Figure 21.

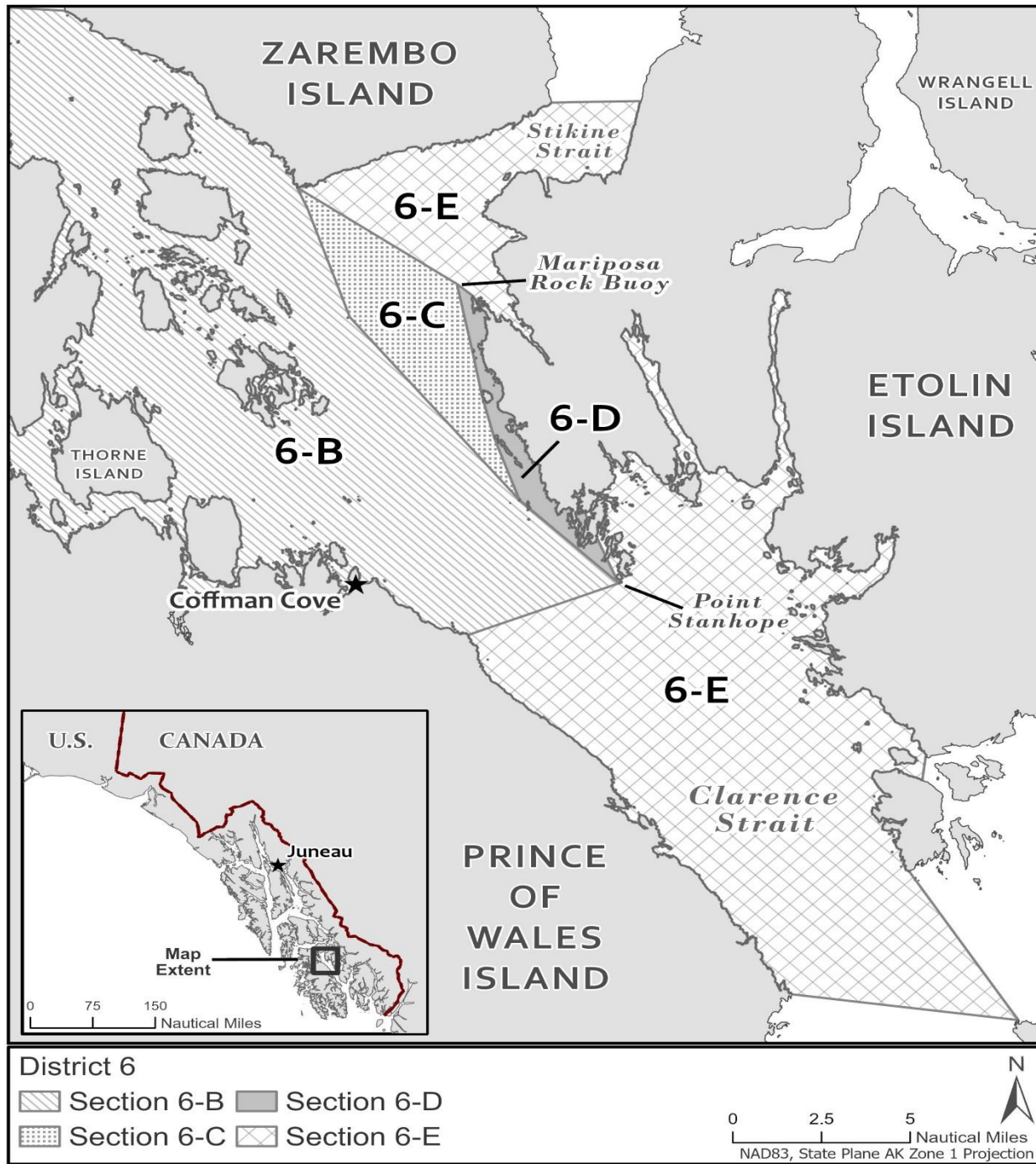


2023 Expectations

- Stikine Chinook salmon: Preseason forecast: **??XXX fish??**
 - Conservation measures likely in place for start of gillnet season
- Sockeye salmon:
 - Stikine Sockeye salmon: **??**
 - Preliminary Forecast produced in February/March
 - Parent year escapements- 5-year-old (2018) for both stocks below goal (poor) and 4-year-old (2019) -Tahltan above range and M/S near lower end but within range
 - Island Stocks: Parent year escapements below average to average
 - McDonald Lake
 - Parent year escapements poor
- Pink Salmon:
 - Parent year escapements within or above goal ranges for both districts



Figure 22.



Questions?

