

# Districts 6 and 8 Drift Gillnet Fisheries 2023 Postseason Report



Paul Salomone  
Alaska Department of Fish and Game  
Gillnet Task Force Meeting  
November 28, 2023



Figure 1.

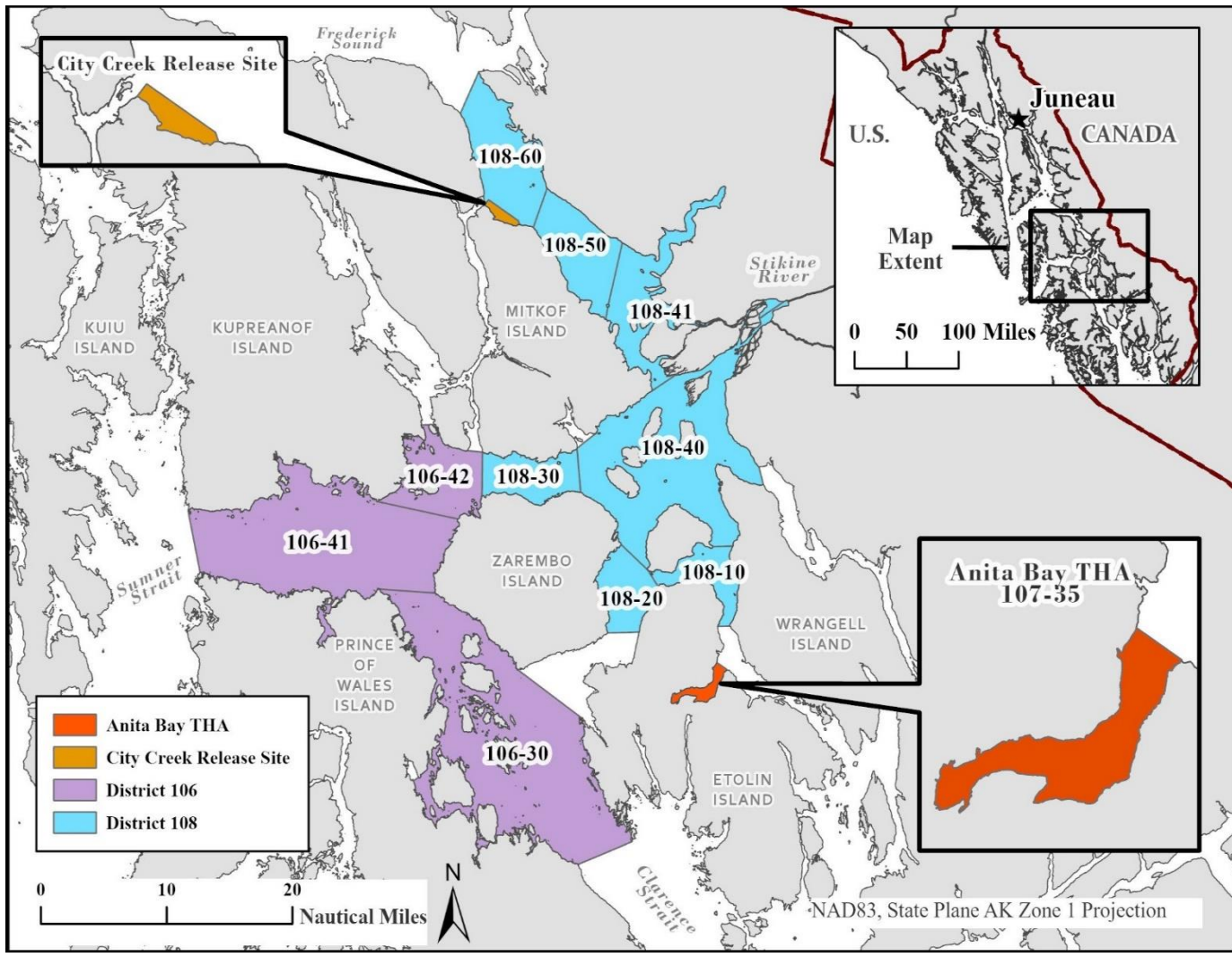
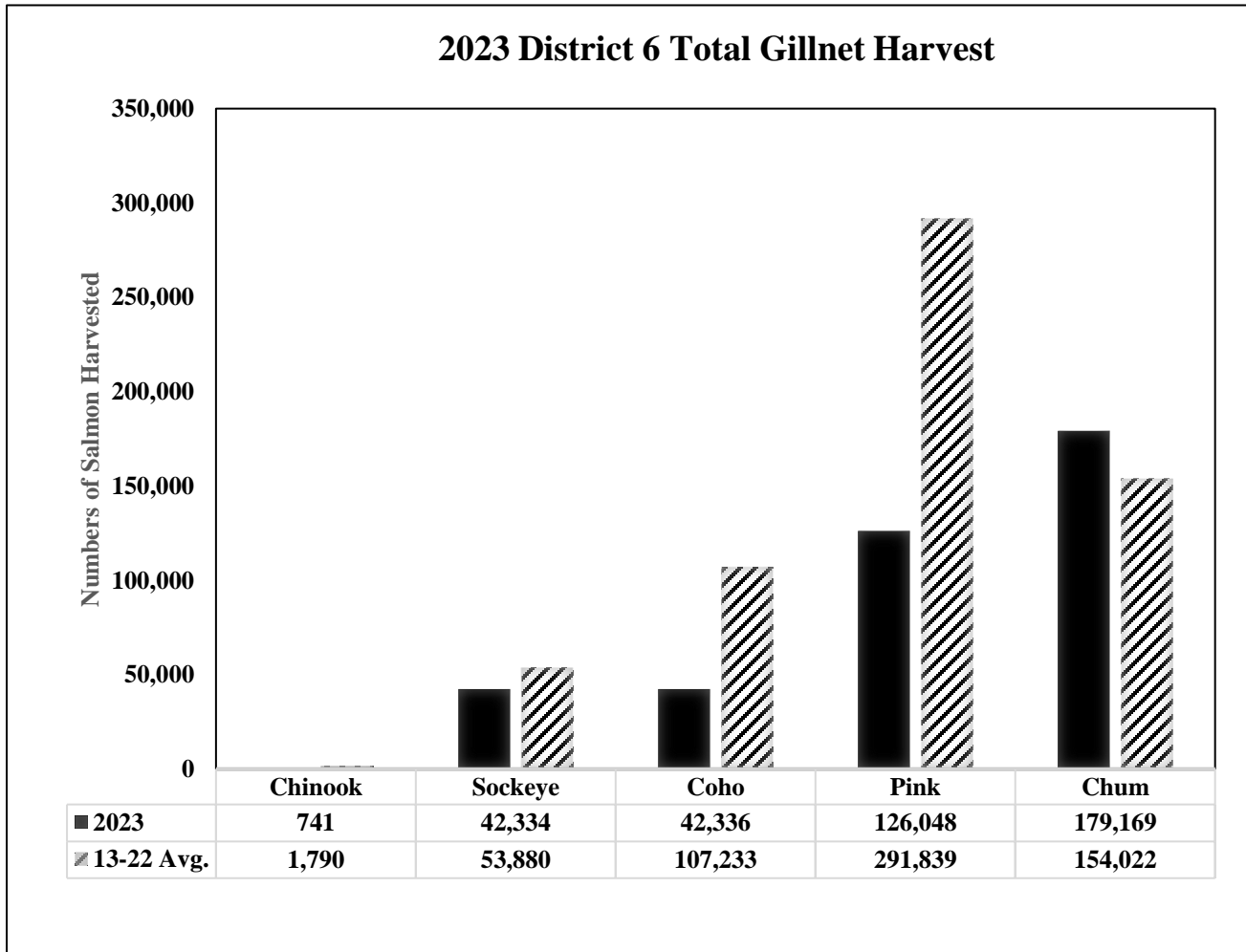


Figure 2.



- Chinook, coho, and pink salmon well below average
- Sockeye near average
- Chum salmon harvest above average



# District 6 Preliminary Stock Composition

- Chinook Salmon
  - Estimated Alaska hatchery contribution of 414 fish or ~56% of harvest (CWT)
- Sockeye Salmon
  - Estimated at 3,300 Stikine River fish or ~8% of harvest (GSI)
- Coho Salmon
  - Estimated Alaska hatchery contribution of 8,300 fish or ~20% of harvest (CWT)



Figure 3.

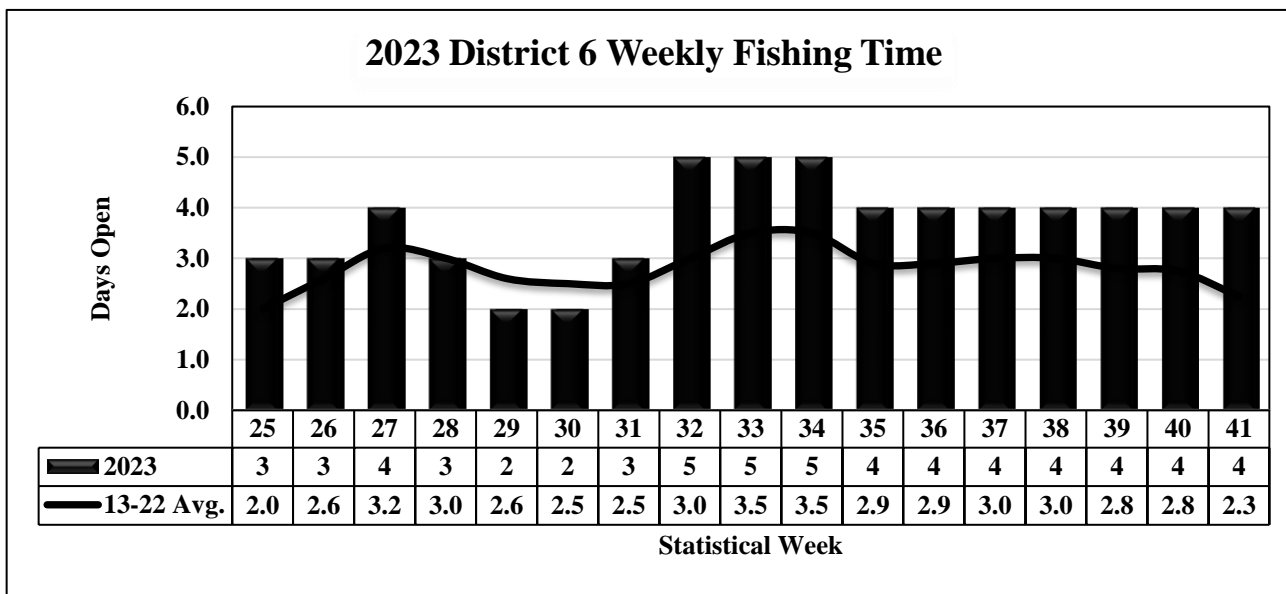
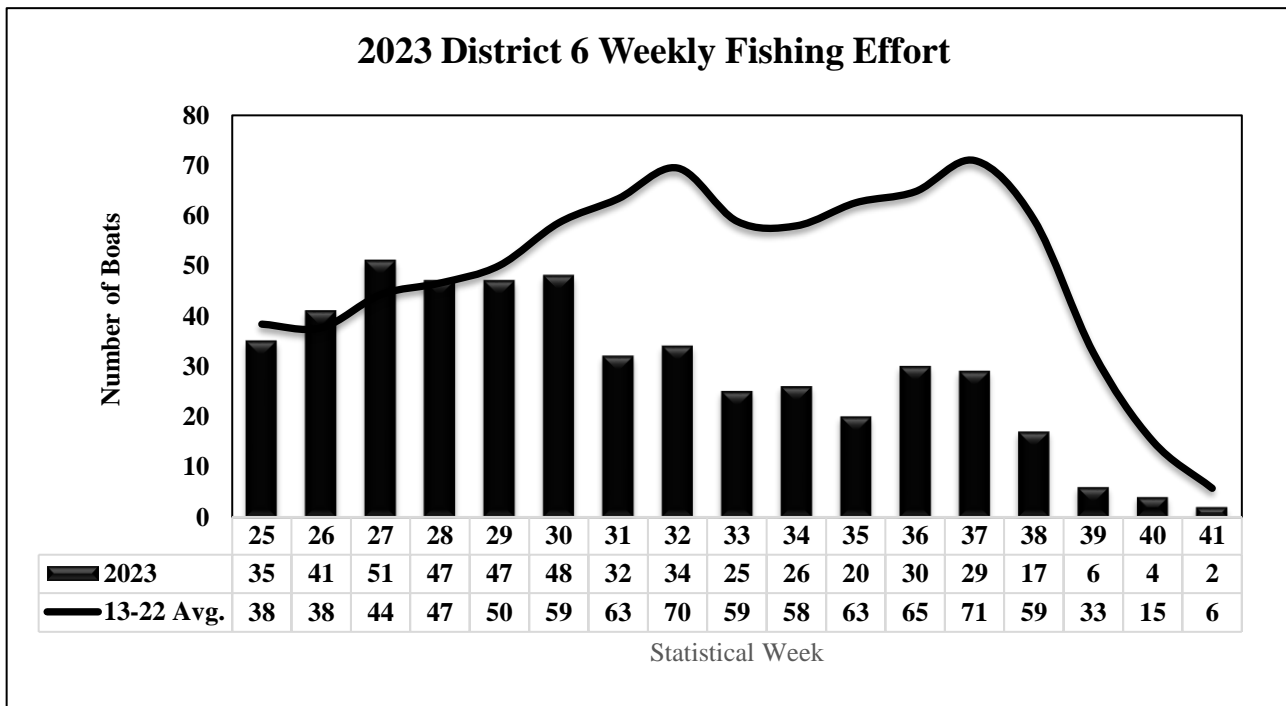


Figure 4.



### 2023 District 8 Total Gillnet Harvest

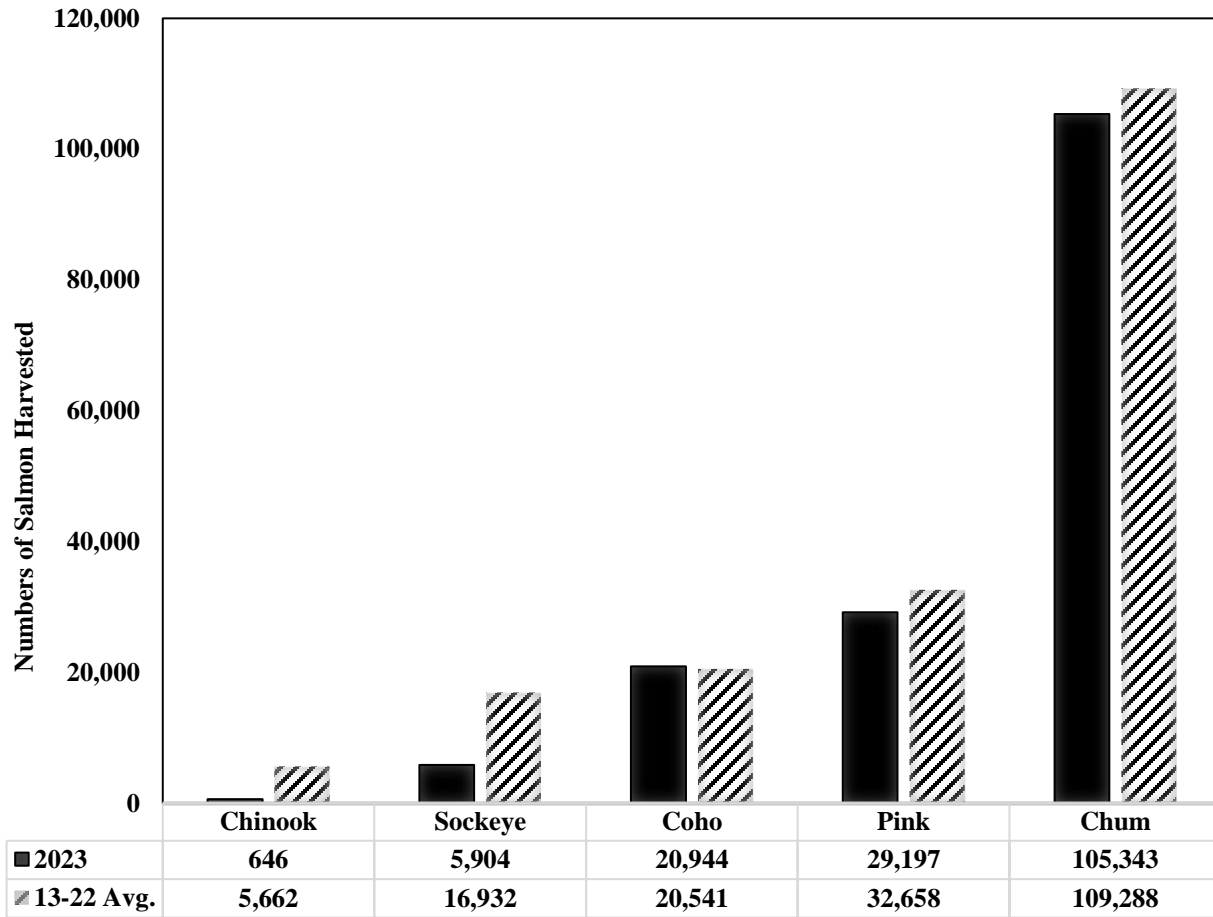


Figure 5.

- Harvest of Chinook and sockeye below average, other species near average



# District 8 Preliminary Stock Composition

- Chinook Salmon
- Estimated Alaska hatchery contribution of 414 fish or ~64% of harvest (CWT)
- Sockeye Salmon
  - Estimated 3,400 Stikine River fish or 85% of harvest
- Coho Salmon
  - Estimated Alaska hatchery contribution of 5,900 fish or ~28% of harvest (CWT)



Figure 6.

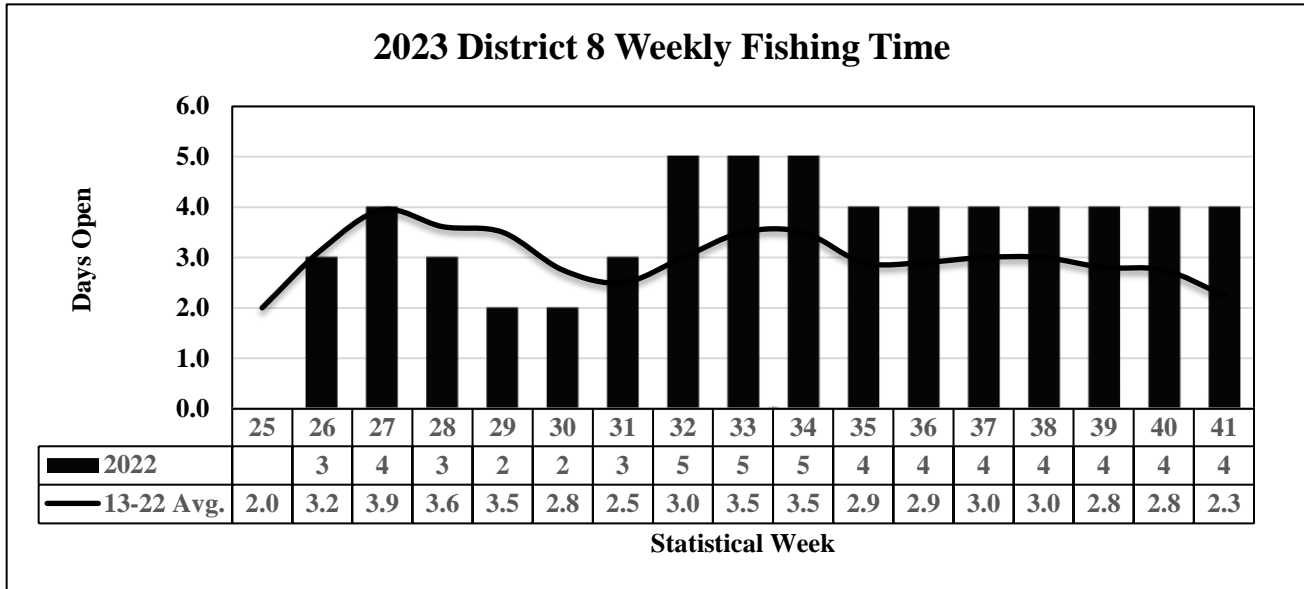
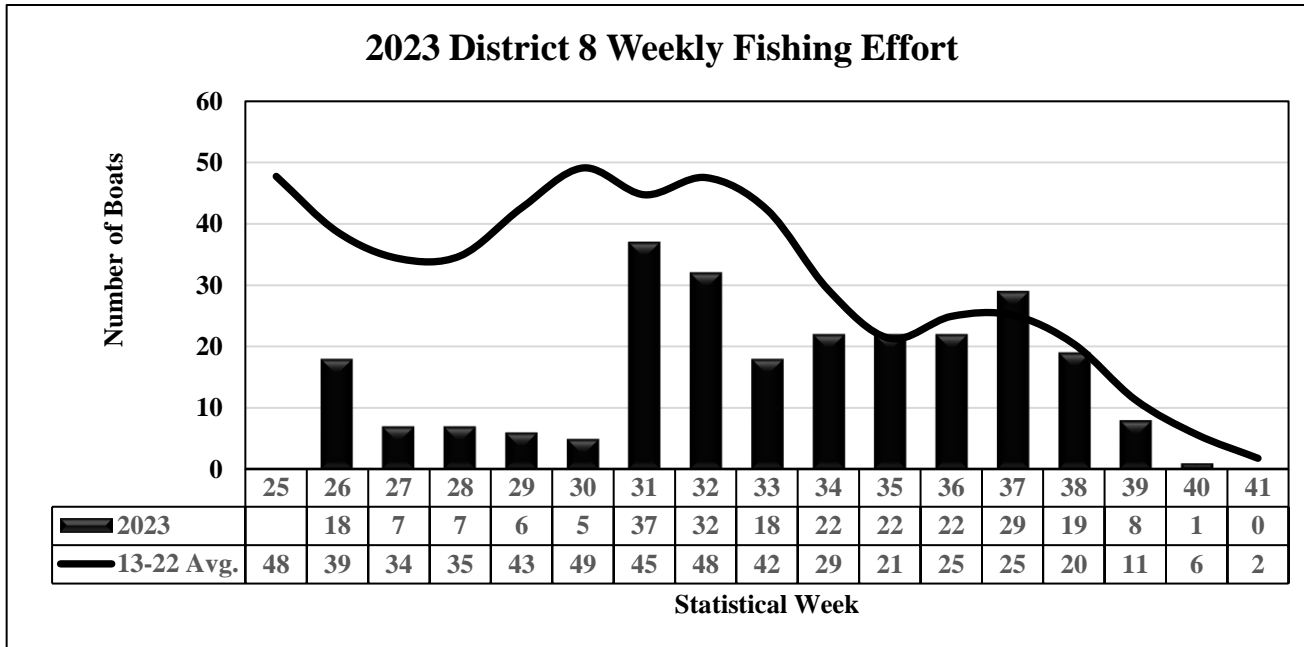


Figure 7.





### Anita Bay Gillnet and Statistical Areas 108-10 & 20 Gillnet Chum Harvest, 2013-2023

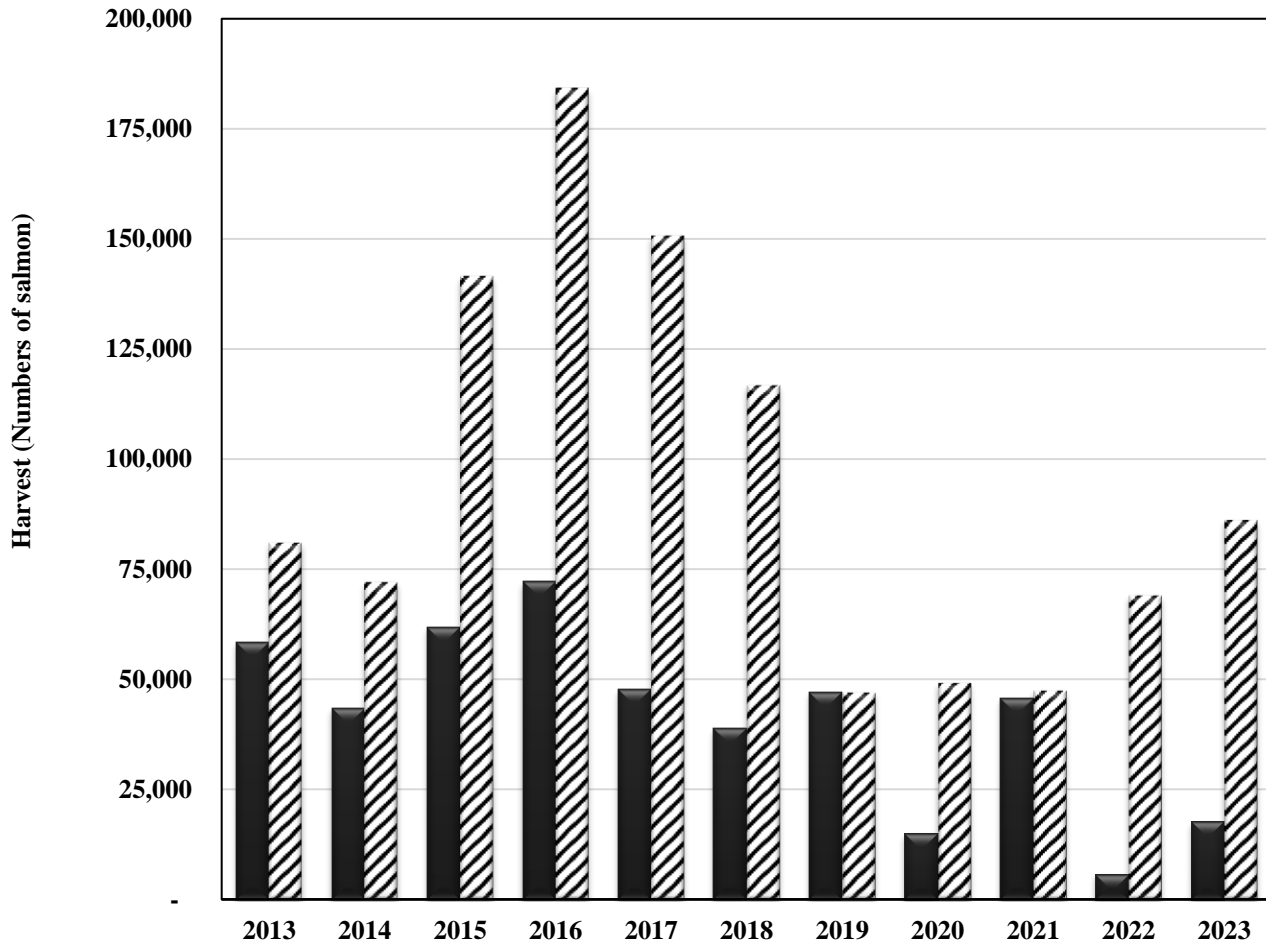


Figure 8.

	2013	2014	2015	2016	2017	2018	2019	2020	2021	2022	2023
■ Anita Bay Drift Gillnet	58,456	43,488	61,881	72,204	47,782	38,786	47,149	15,034	45,736	5,814	17,715
▨ District 108-10&20 GN	80,965	72,067	141,424	184,094	150,575	116,647	46,972	49,154	47,398	69,003	86,100



# Chinook Salmon Management

- Preseason forecast of 11,700 large Stikine Chinook salmon. Inseason projections were below 10,000
- No AC, Conservation measures implemented in all U.S. fisheries
  - Gillnet
    - Delayed opening until SW 25 in D-6, SW 26 in D-8
    - Maximum mesh size of 6 inches through SW 29 in both districts
    - Area restrictions in D-8 through SW 31
  - Troll
    - Spring troll fisheries did not open in 2023
    - Non-retention of Chinook salmon for the first summer troll opening
  - Sport
    - Chinook salmon non-retention period from April 1 through July 14
    - Bag and possession limit was 2 fish for residents, 1 fish for nonresidents (3 fish annual limit), City Creek release area 1 fish for residents and nonresidents
  - Subsistence
    - Closed to directed Chinook fishing, did not open for sockeye until June 21
- Postseason Stikine Chinook salmon run size estimate: around 6,000 fish
  - Estimated escapement: less than 6,000 fish
    - Gillnet harvest of 58 large Stikine River Chinook salmon through SW29



# Stikine Sockeye Salmon

- Preseason Forecast: 86,000 fish (57,000 Tahltan, 29,000 mainstem)
  - U.S. AC 22,500 fish
- Preliminary postseason run size estimated at ~100,000 (will change with GSI)
  - Preliminary U.S. Harvest ~10,600 Stikine origin sockeye (9,200 in commercial gillnet fishery and 1,400 in Federal Stikine subsistence fishery)
  - Canada Harvest ~17,000 Stikine origin sockeye salmon (10,800 directed commercial, 100 incidental in directed coho fishery, 6,000 in the FN food fishery)



# Pink Salmon Management

- SW's 32 through 35 (August 6–September 2)
- District 6
  - Fishing time above average
  - Effort below average (near average SW's 32 and 33)
  - Pink salmon harvest below average
- District 8
  - Fishing time above average
  - Effort below average
  - Pink salmon harvest below average (except near average in SW 31)
- Stock groups escapement within target range



# Coho Salmon Management

- SW's 36 through 41 (September 3– October 14)
- District 6
  - Below average effort
  - Above average fishing time
  - Coho salmon harvest well below average (hatchery component~ 20%)
  - Average run timing
  - Weak hatchery stocks
- District 8
  - Near average effort
  - Average fishing time
  - Weekly coho salmon harvest near average except for SW 37 (8,000 Vs. 3,700), 28% hatchery stocks
  - Run timing average
  - Weak hatchery stocks



# 2024 Expectations

- Stikine Chinook salmon: Preseason forecast:
  - Conservation measures likely in place for start of gillnet season
- Sockeye salmon:
  - Stikine Sockeye salmon:
    - Preliminary Forecast produced in February/March
    - Parent year escapements- 5-year-old (2019) for both stocks above or within goal and 4-year-old (2020) -Tahltan and M/S below goal
  - Island Stocks: Parent year escapements below average to average
  - McDonald Lake
    - Parent year escapements poor
- Pink Salmon:
  - Parent year escapements within or above goal ranges for both districts
- Coho Salmon:
  - Generally made escapements in parent year



# Genetic Stock Composition of Sockeye Harvest SW 25

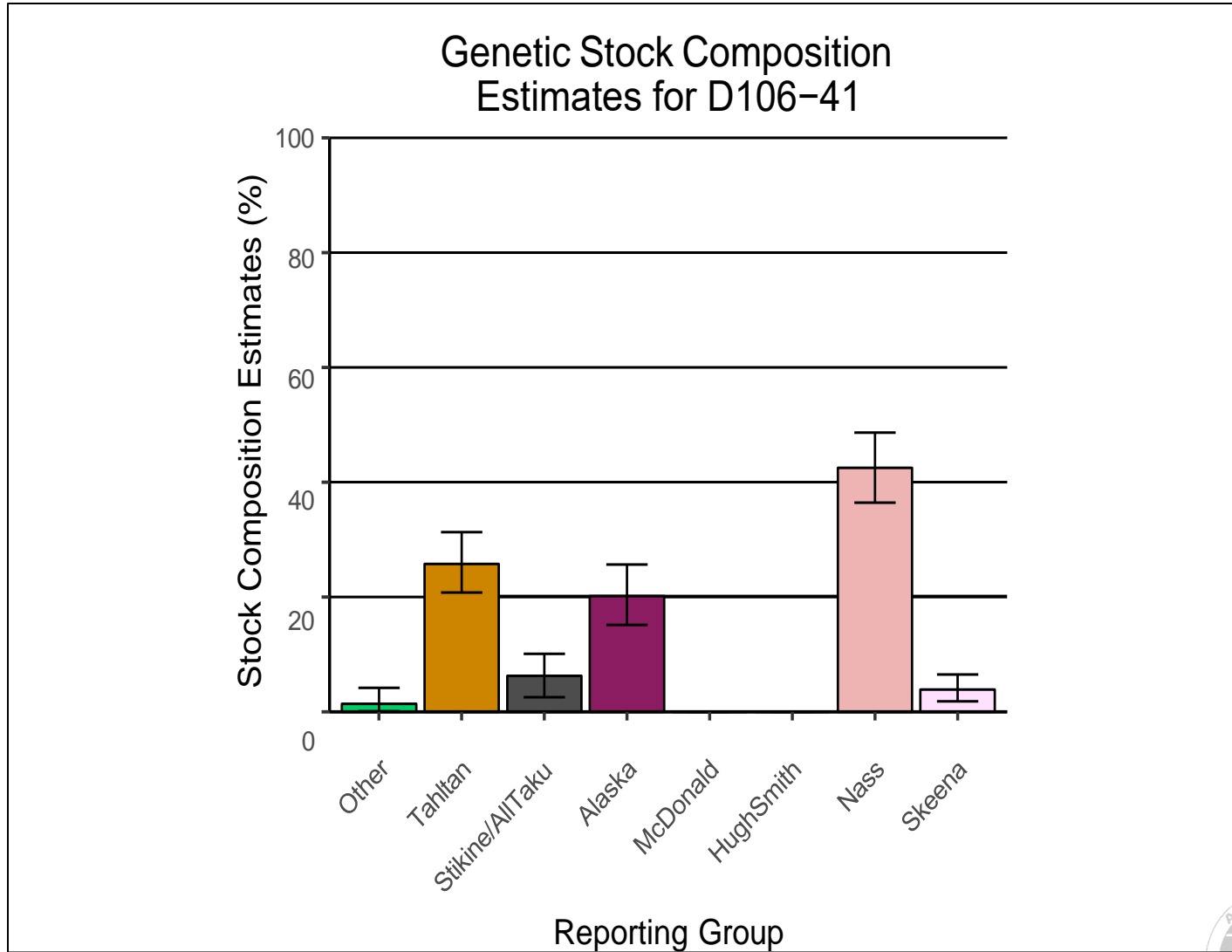


Figure 9.



# Genetic Stock Composition of Sockeye Harvest SW 26

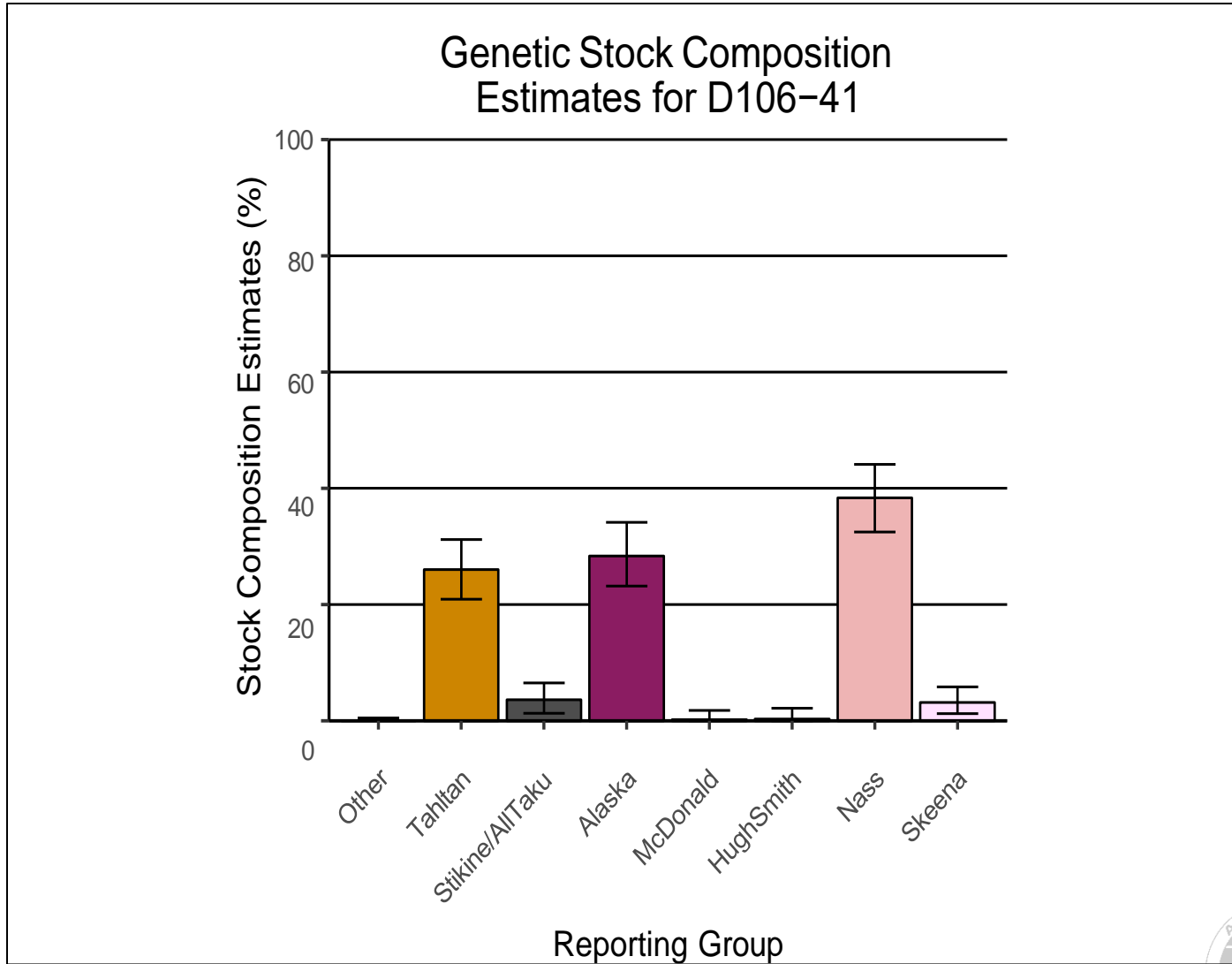


Figure 10.





# Genetic Stock Composition of Sockeye Harvest SW 27

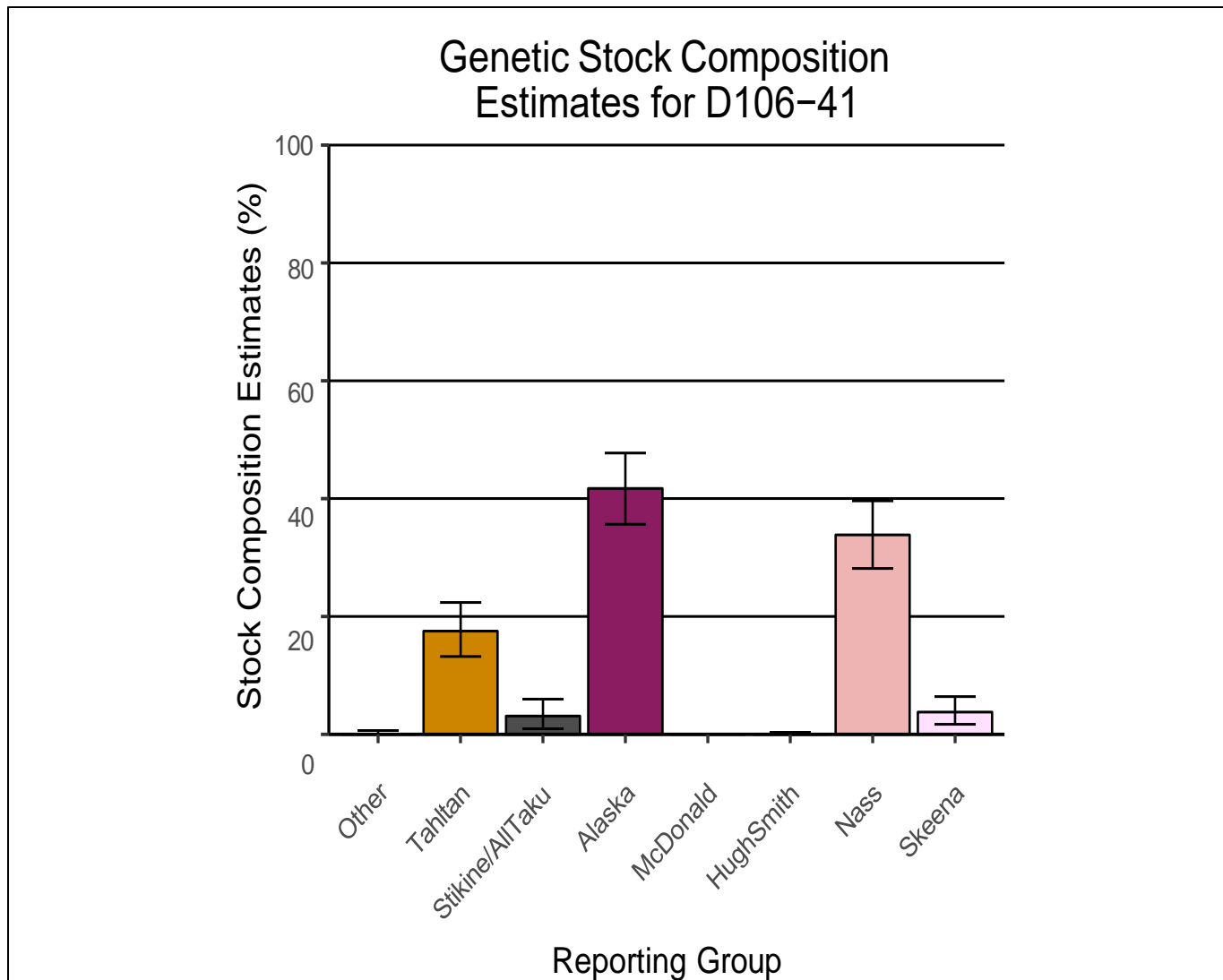


Figure 11.



# Genetic Stock Composition of Sockeye Harvest SW 28

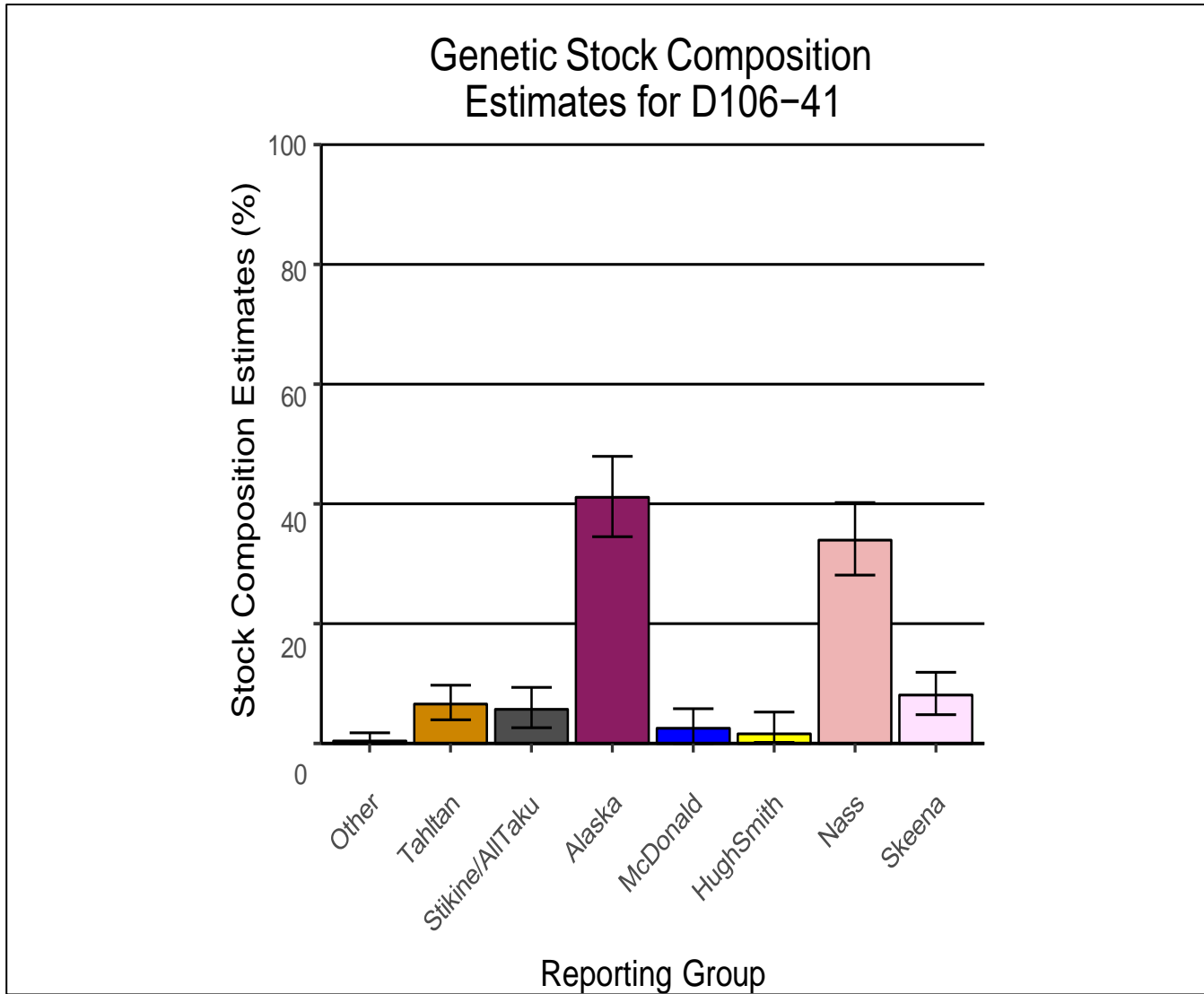


Figure 12.



# Genetic Stock Composition of Sockeye Harvest SW 29

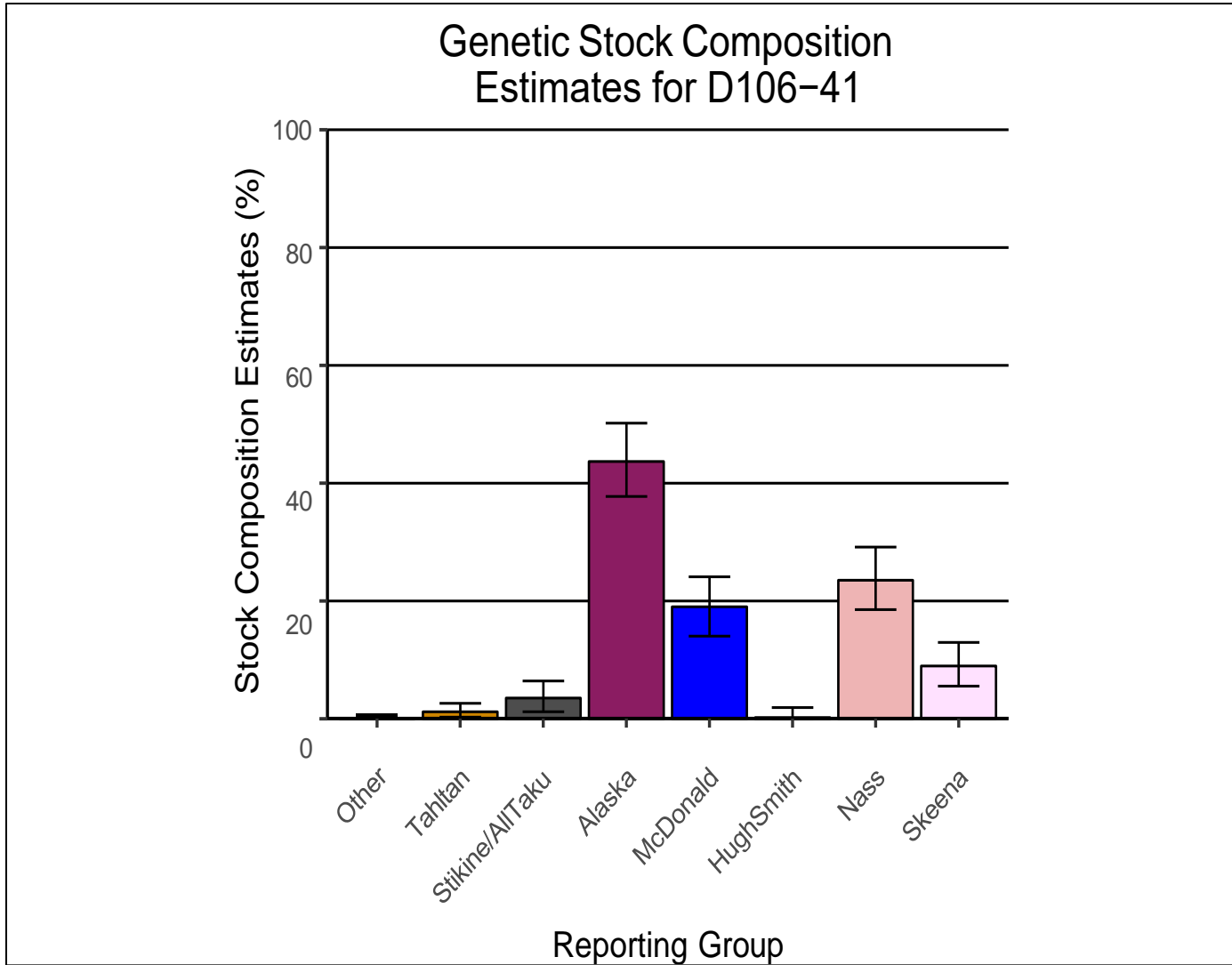


Figure 13.



## Comparison of Weekly Stock Composition Estimates by Year

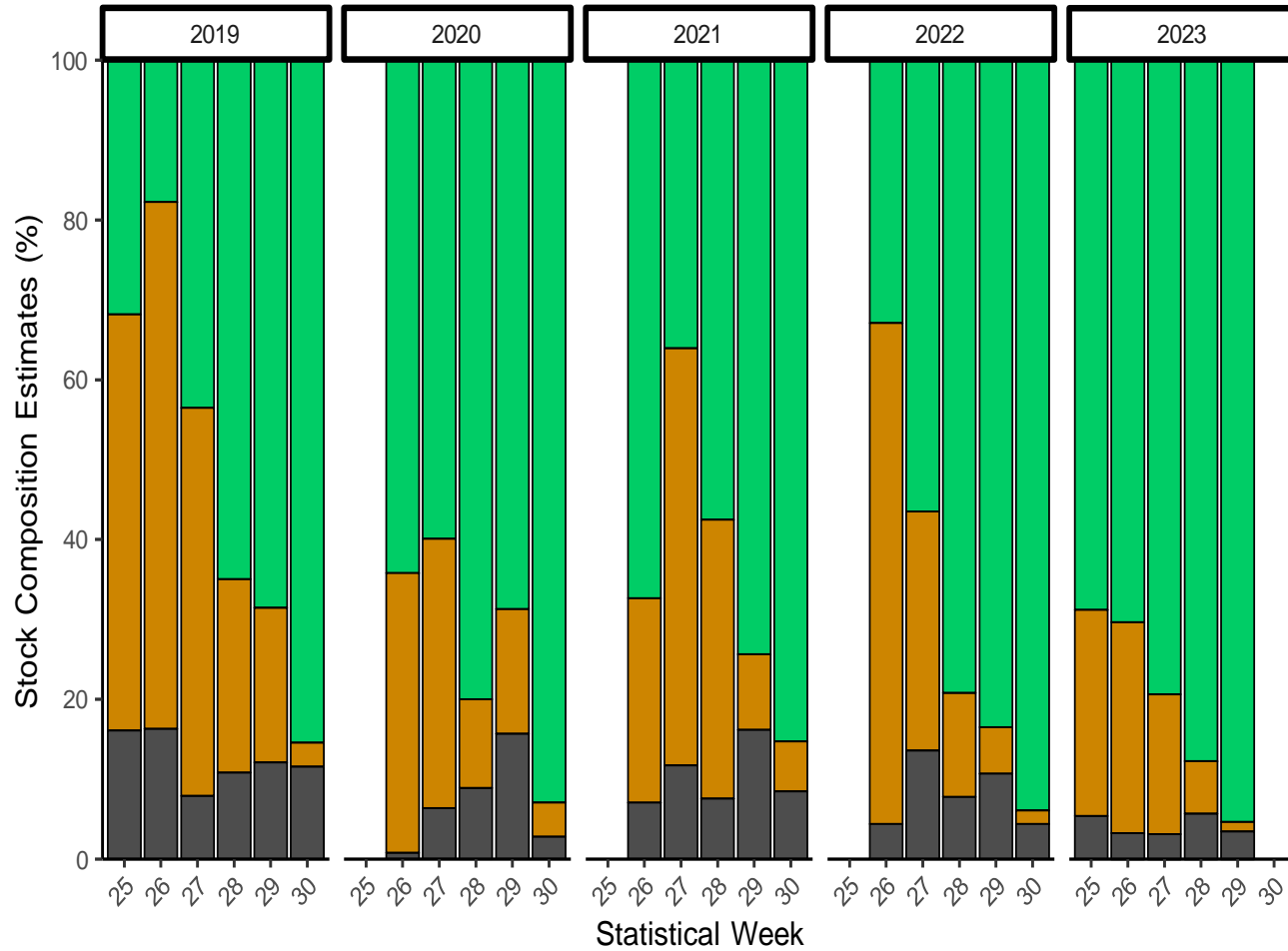
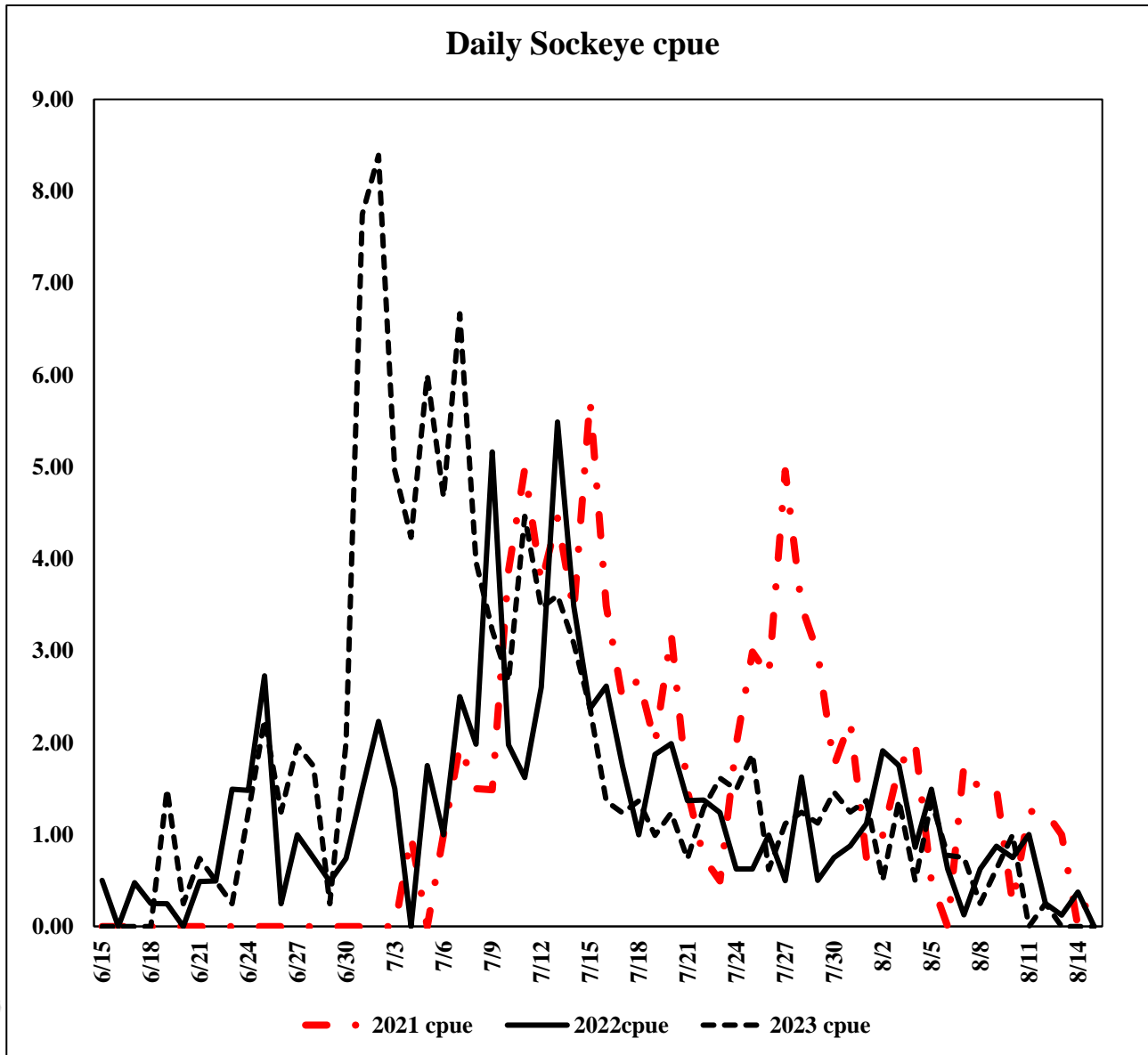


Figure 14.



# Daily Sockeye catches at the Kakwan tagging project 2021-2023

Figure 15.



# Cumulative Sockeye CPUE at the Kakwan tagging project 2021-2023

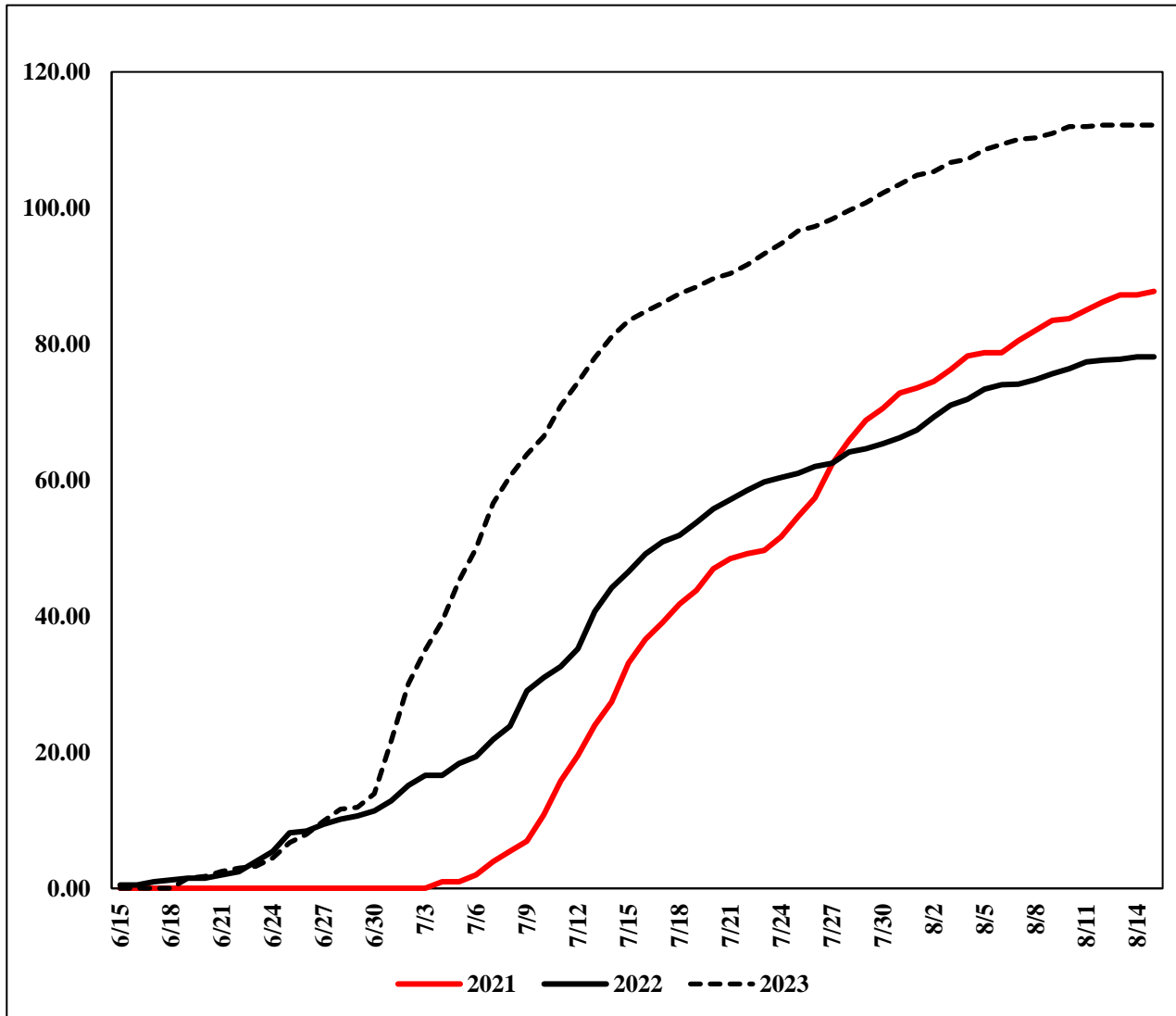


Figure 16.



# Questions?

