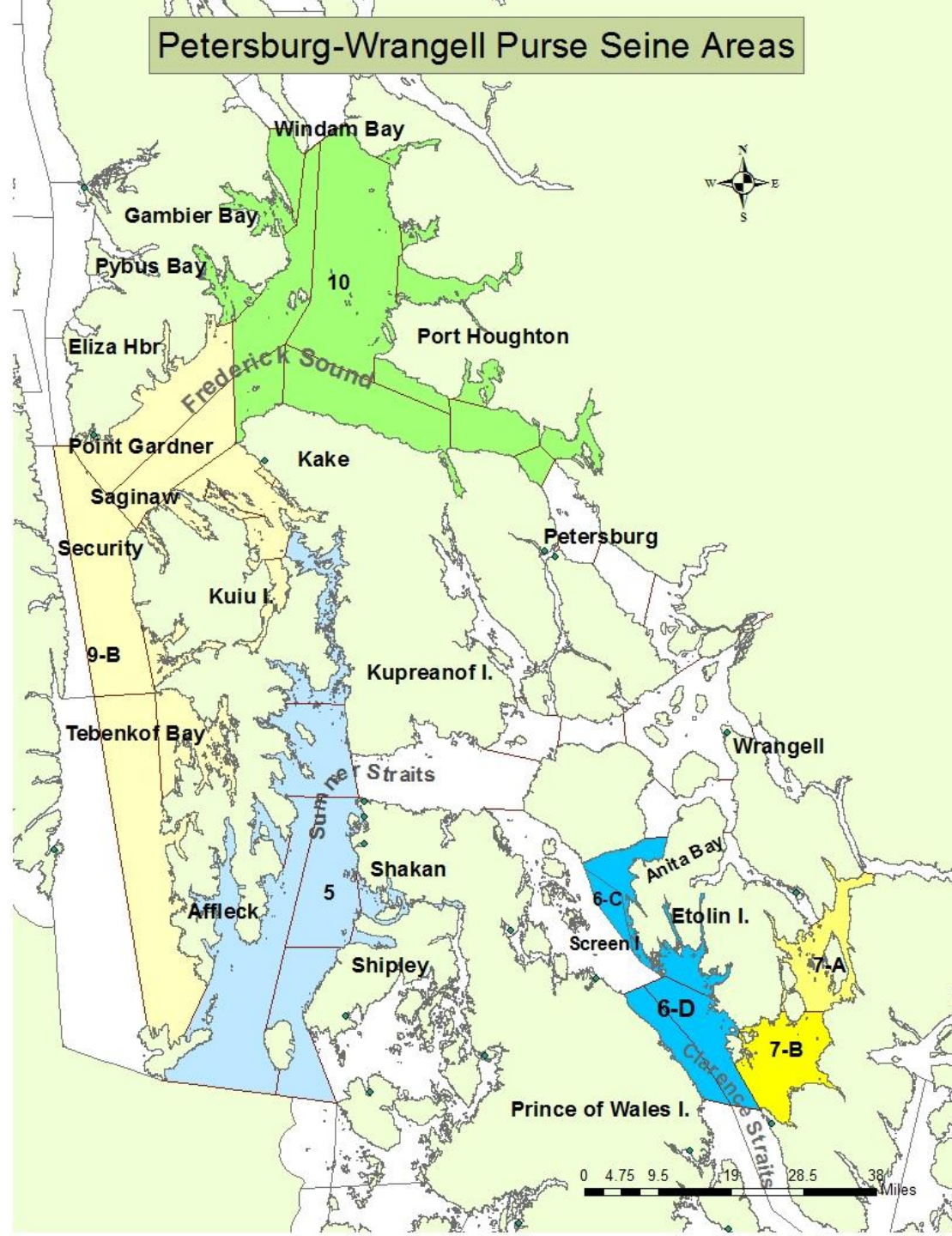


Petersburg-Wrangell Management Area 2023 Season Summary

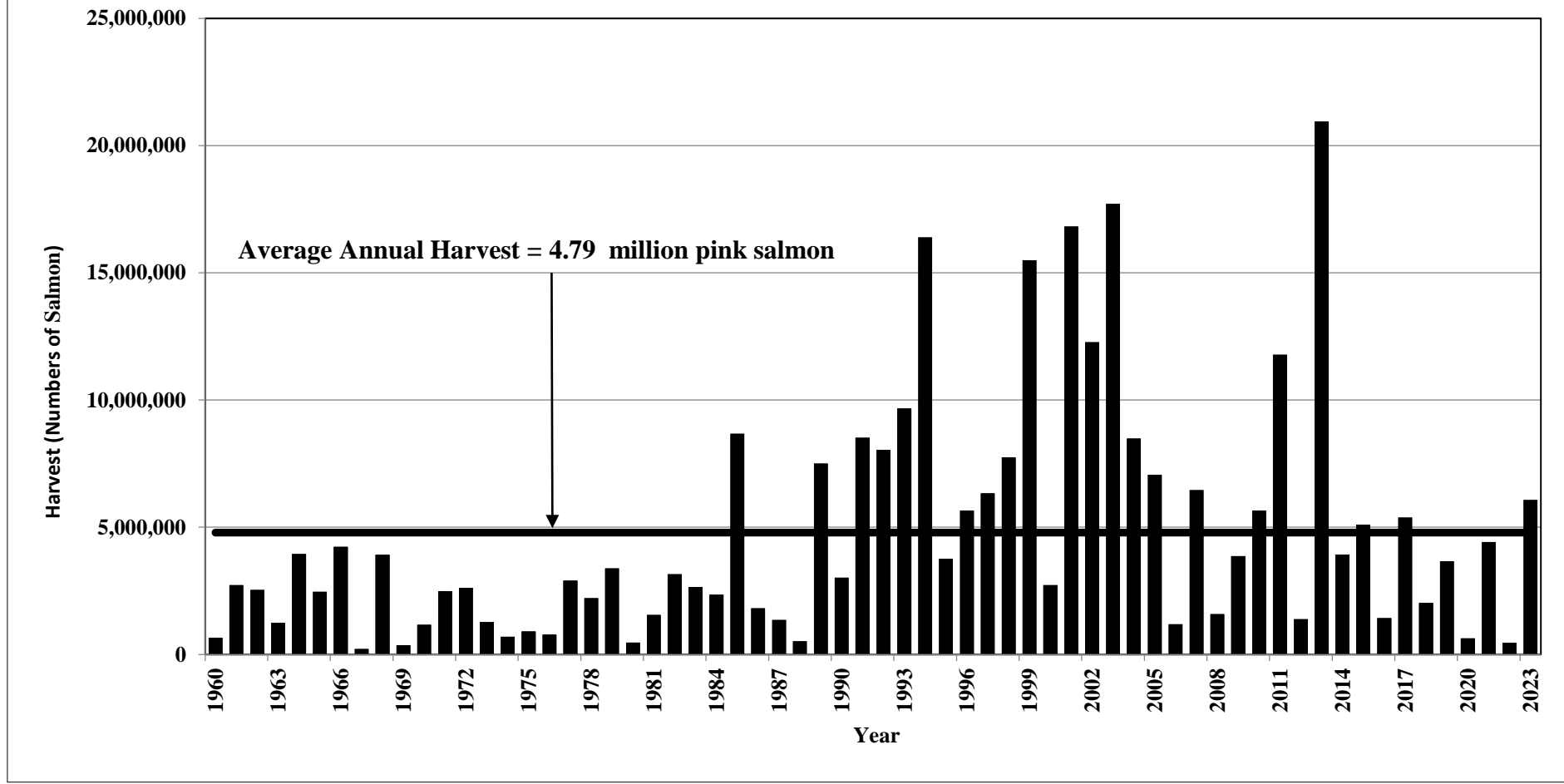
Paul Salomone
Alaska Department of Fish and Game
Seine Task Force Meeting
December 1, 2023



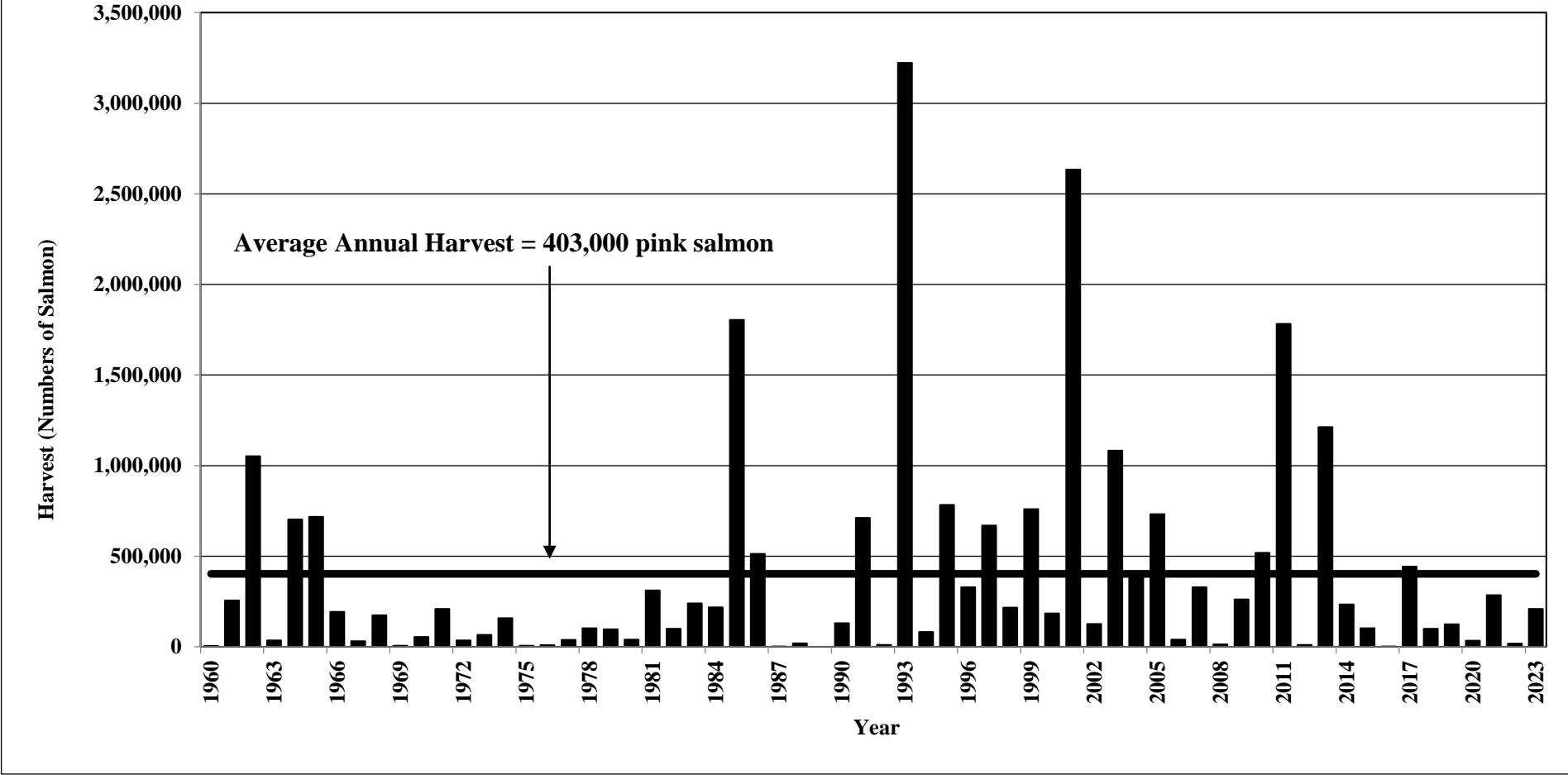
Petersburg-Wrangell Purse Seine Areas



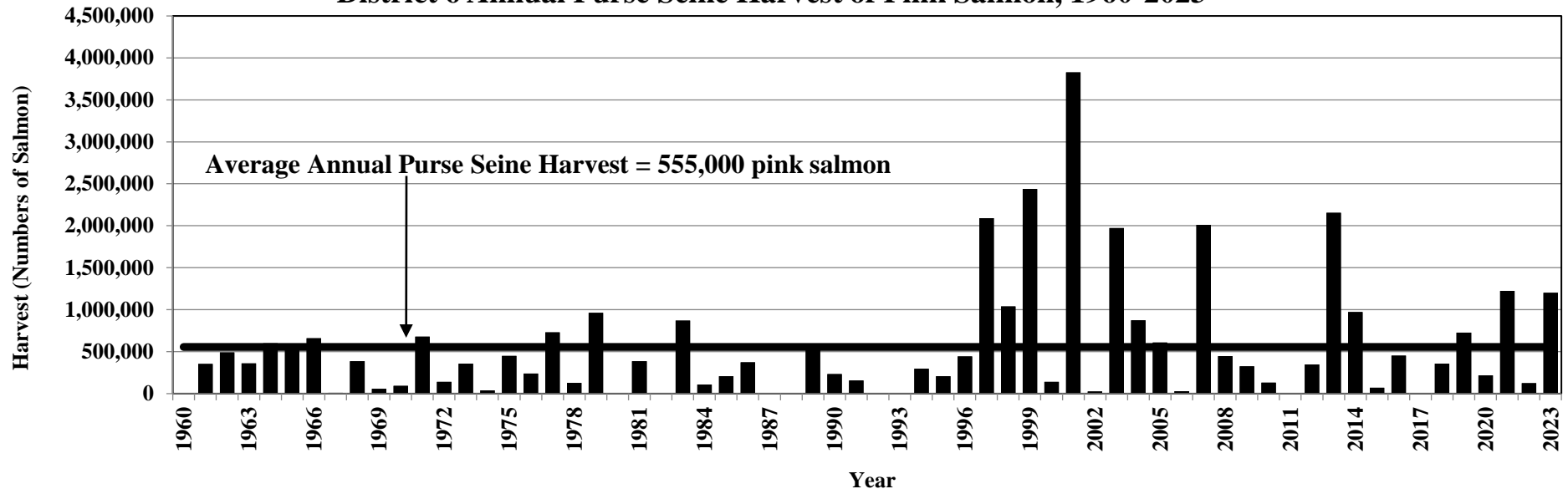
Petersburg-Wrangell Management Area Annual Harvest of Pink Salmon, 1960-2023



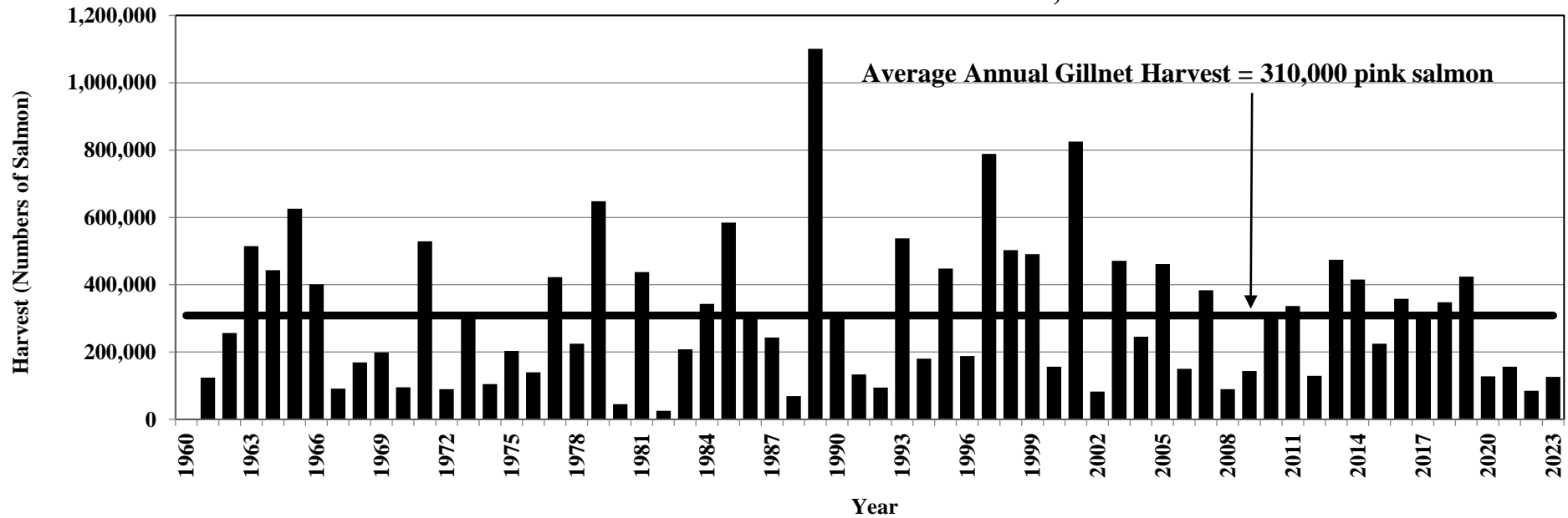
District 5 Annual Purse Seine Harvest of Pink Salmon, 1960-2023



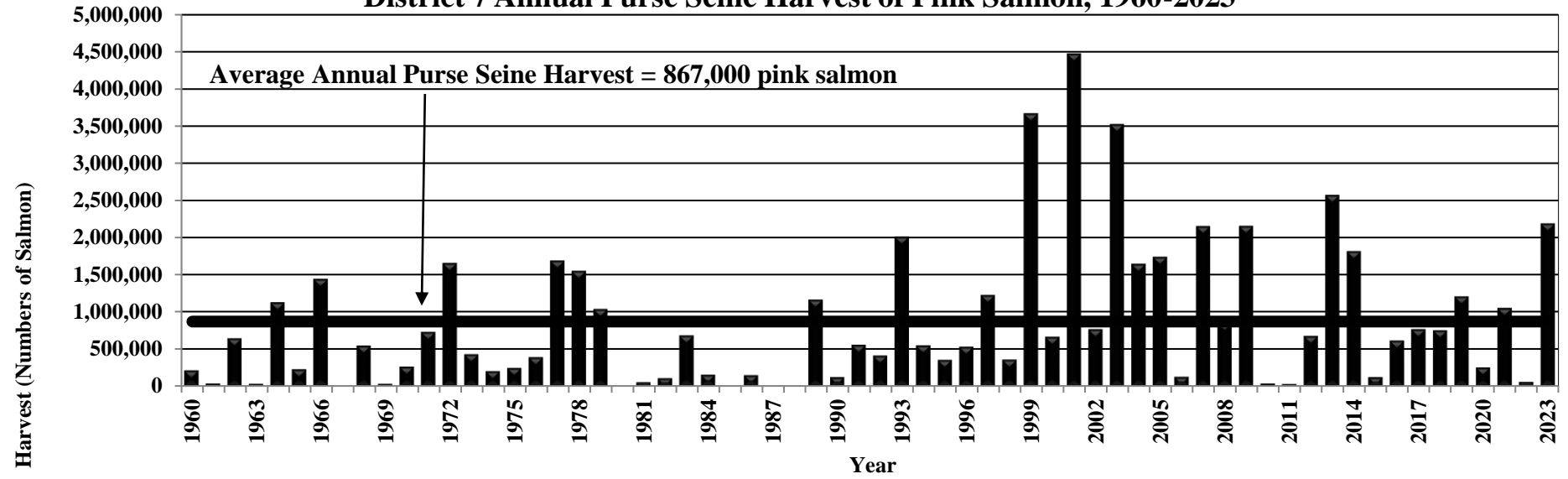
District 6 Annual Purse Seine Harvest of Pink Salmon, 1960-2023



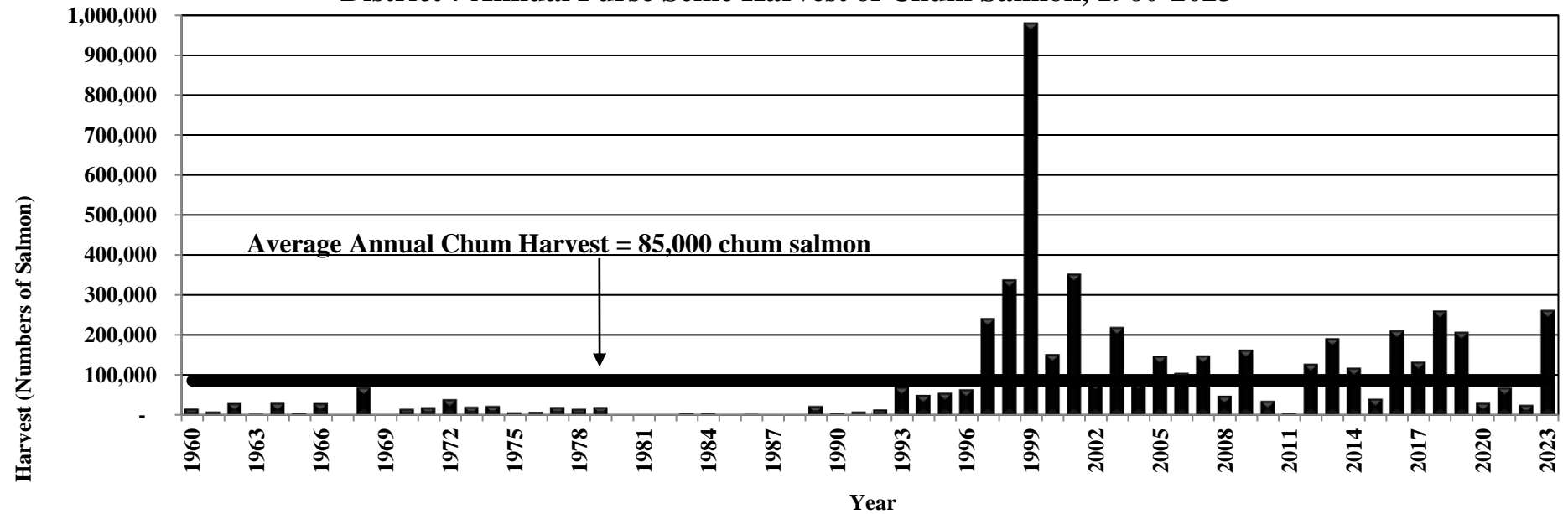
District 6 Annual Drift Gillnet Harvest of Pink Salmon, 1960-2023



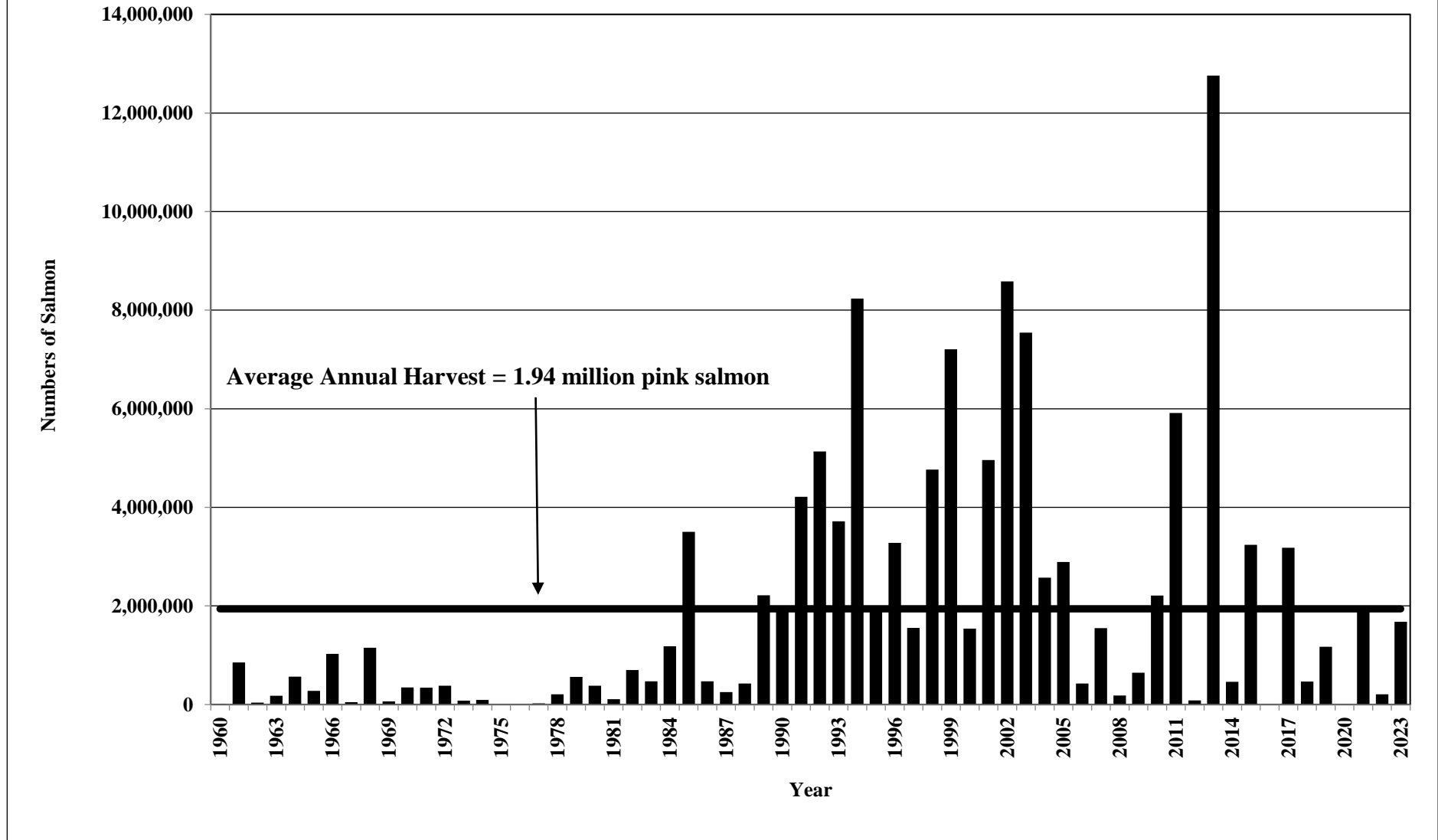
District 7 Annual Purse Seine Harvest of Pink Salmon, 1960-2023



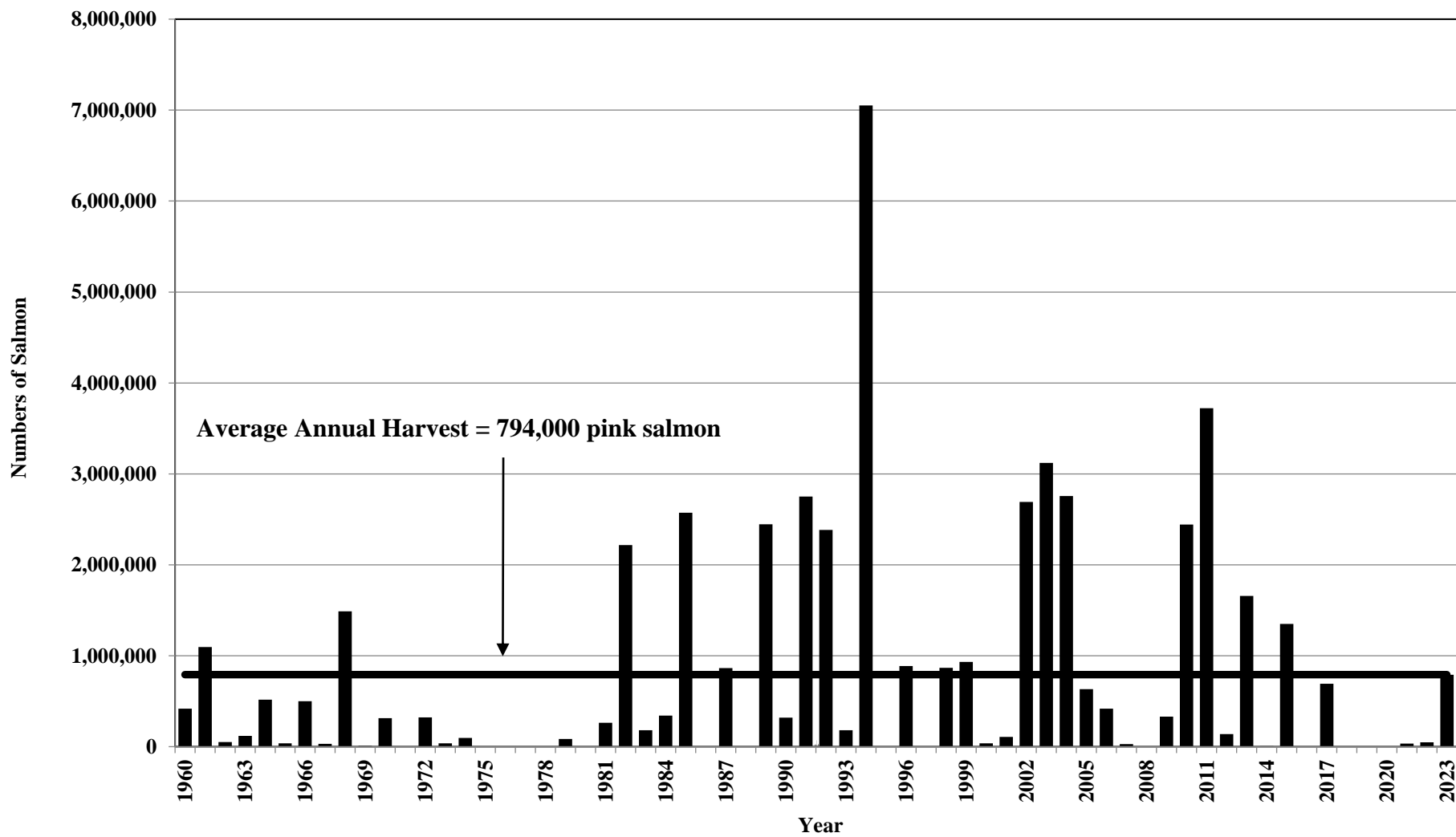
District 7 Annual Purse Seine Harvest of Chum Salmon, 1960-2023



Section 9-B Annual Purse Seine Harvest of Pink Salmon, 1960-2023



District 10 Annual Purse Seine Harvest of Pink Salmon, 1960-2023



2023

BLACK –
31 stock groups
exceeded
management
targets



GRAY –
13 stock groups
met management
targets

RED –
2 stock group
did not meet
management targets



2024 Expectations

- District 5 – good parent year escapement
 - Openings based on escapement but expected to begin the first week of August.

Esc. Range **140,000-380,000**

Affleck Canal (D-5)

2002	536,426
2004	463,593
2006	140,991
2008	107,628
2010	206,291
2012	209,649
2014	209,065
2016	103,817
2018	113,122
2020	208,612
2022	230,230

Average 229,948

Esc. Range **110,000-280,000**

Shipley Bay (D-5)

2002	146,757
2004	177,835
2006	96,959
2008	149,191
2010	142,859
2012	75,409
2014	88,285
2016	81,600
2018	170,100
2020	181,404
2022	172,977

Average 134,852



2024 Expectations

- District 6 – good parent year escapement
 - Openings dependent on observations of pink salmon abundance.

Esc. Range **50,000-140,000**

Burnett (D-6)

2002	212,455
2004	96,600
2006	70,447
2008	132,750
2010	128,350
2012	75,167
2014	146,750
2016	101,328
2018	77,769
2020	85,599
2022	118,566

Average 113,253

Esc. Range **50,000-130,000**

Totem Bay (D-6)

2002	108,662
2004	175,843
2006	72,993
2008	30,752
2010	94,069
2012	49,638
2014	49,470
2016	63,970
2018	55,233
2020	72,845
2022	96,529

Average 79,091

Esc. Range **40,000-120,000**

Ratz Harbor (D-6)

2002	148,313
2004	172,000
2006	101,200
2008	181,200
2010	118,600
2012	89,400
2014	160,400
2016	70,750
2018	59,500
2020	102,000
2022	54,000

Average 114,306

Esc. Range **70,000-180,000**

Whale Pass (D-6)

2002	100,420
2004	131,787
2006	99,245
2008	39,204
2010	90,770
2012	67,955
2014	117,387
2016	74,600
2018	137,684
2020	139,016
2022	124,956

Average 102,093



2024 Expectations

- District 7 – good parent year escapement
 - Openings based on observations of escapement but:
 - Section 7–A expected to open late July or early August;
 - Section 7–B expected to open around early-mid August.

Esc. Range **210,000-570,000**

Anan Creek (D-7A)

2002	441,025
2004	450,034
2006	274,024
2008	488,822
2010	341,055
2012	327,411
2014	292,478
2016	222,924
2018	470,082
2020	207,699
2022	386,390

Average 354,722

Esc. Range **50,000-120,000**

Union Bay (D-7B)

2002	138,527
2004	110,842
2006	97,589
2008	98,482
2010	122,274
2012	96,062
2014	141,850
2016	67,750
2018	58,988
2020	87,803
2022	93,179

Average 101,213



2024 Expectations

- Section 9-B – good to excellent parent year escapement
 - Openings based on observations of escapement, test fishery results, but expected to begin early August.

Esc. Range **140,000-330,000**

Eliza Harbor (D-9B)

2002	193,956
2004	275,600
2006	200,538
2008	69,812
2010	134,184
2012	97,101
2014	101,006
2016	73,850
2018	35,850
2020	103,485
2022	196,044

Average 134,675

Esc. Range **140,000-330,000**

Skanax Bay (D-9B)

2002	493,594
2004	309,440
2006	199,393
2008	62,114
2010	237,455
2012	115,945
2014	130,470
2016	138,425
2018	235,737
2020	142,989
2022	280,243

Average 213,255

Esc. Range **220,000-530,000**

Tebenkof (D-9B)

2002	521,082
2004	353,626
2006	230,596
2008	285,998
2010	382,213
2012	237,334
2014	272,366
2016	195,748
2018	298,194
2020	304,796
2022	294,998

Average 306,996



2024 Expectations

- District 10 – good parent year escapement.
 - Early District 10 mainland openings will be dependent on test fishery results and observations of pink salmon abundance.
 - Admiralty portion of District 10 possible openings by mid-July.

Esc. Range **20,000-40,000**
Farragut Bay (D-10)

2002	29,351
2004	55,166
2006	24,363
2008	10,077
2010	37,603
2012	23,968
2014	23,100
2016	25,848
2018	17,835
2020	15,384
2022	23,000
Average	25,972

Esc. Range **370,000-870,000**
Houghton (D-10)

2002	824,900
2004	640,250
2006	438,999
2008	215,379
2010	458,200
2012	250,042
2014	151,675
2016	238,500
2018	150,171
2020	204,732
2022	303,656
Average	352,409

Esc. Range **170,000-400,000**
Pybus/Gambier (D-10)

2002	397,157
2004	497,400
2006	291,285
2008	103,791
2010	368,800
2012	204,750
2014	141,380
2016	120,960
2018	37,379
2020	246,881
2022	316,536
Average	247,847

Esc. Range **40,000-80,000**
Portage Bay

2002	52,472
2004	88,684
2006	24,000
2008	18,844
2010	68,573
2012	42,850
2014	16,513
2016	41,225
2018	36,882
2020	50,144
2022	50,800
Average	44,635



Questions?

