

Southeast Alaska Red King Crab Stock Assessment



King and Tanner Task Force Mtg.
December 11, 2020



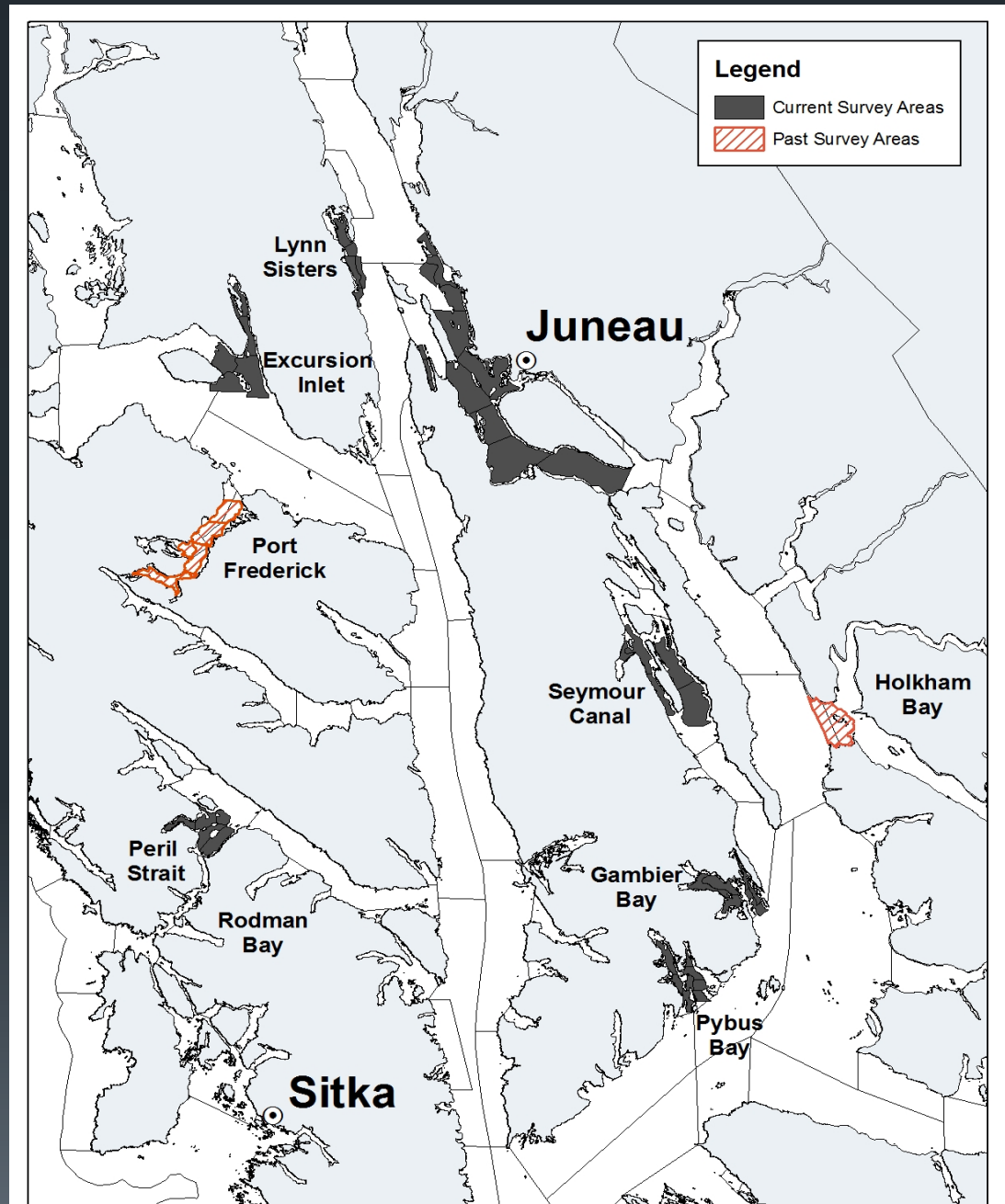
Image: northpacificseafoods.com

RKC Assessment / Management

- Assessment
 - 7 areas surveyed with ~545 pot lifts
 - Biomass estimated using Catch-Survey Analysis (CSA) model
- Management plan
 - Season November 1 – January 24
 - Appropriate harvest rate
 - Regional GHL set using survey biomass
 - Pot limits based on GHL
 - Minimum GHL threshold of 200,000 lbs legal crab
 - Mark/Recapture expansion factor incorporated into biomass estimate
 - Males only, 7-inch minimum CW

Southeast Alaska

Major Commercial Red King Crab Fishing Grounds



Tagging Project:

4

- Collect growth and movement.
- Tag is retained though the molt, placed in the isthmus muscle.
- 15 pots set in each bay in areas of high abundance.
- Two bays: Seymour Canal and Excursion Inlet.
 - Seymour crab tagged: 2019 -- 134
2020 -- 42
 - Excursion crab tagged: 2019 -- 401
2020 -- 242; 7 recaptures
- If you catch a crab with a tag.
 - Release, if not legal.
 - Record Lat. Long. and tag # if you can.
 - There are **No Rewards**.





PU King Crab Permits (outside 11-A)



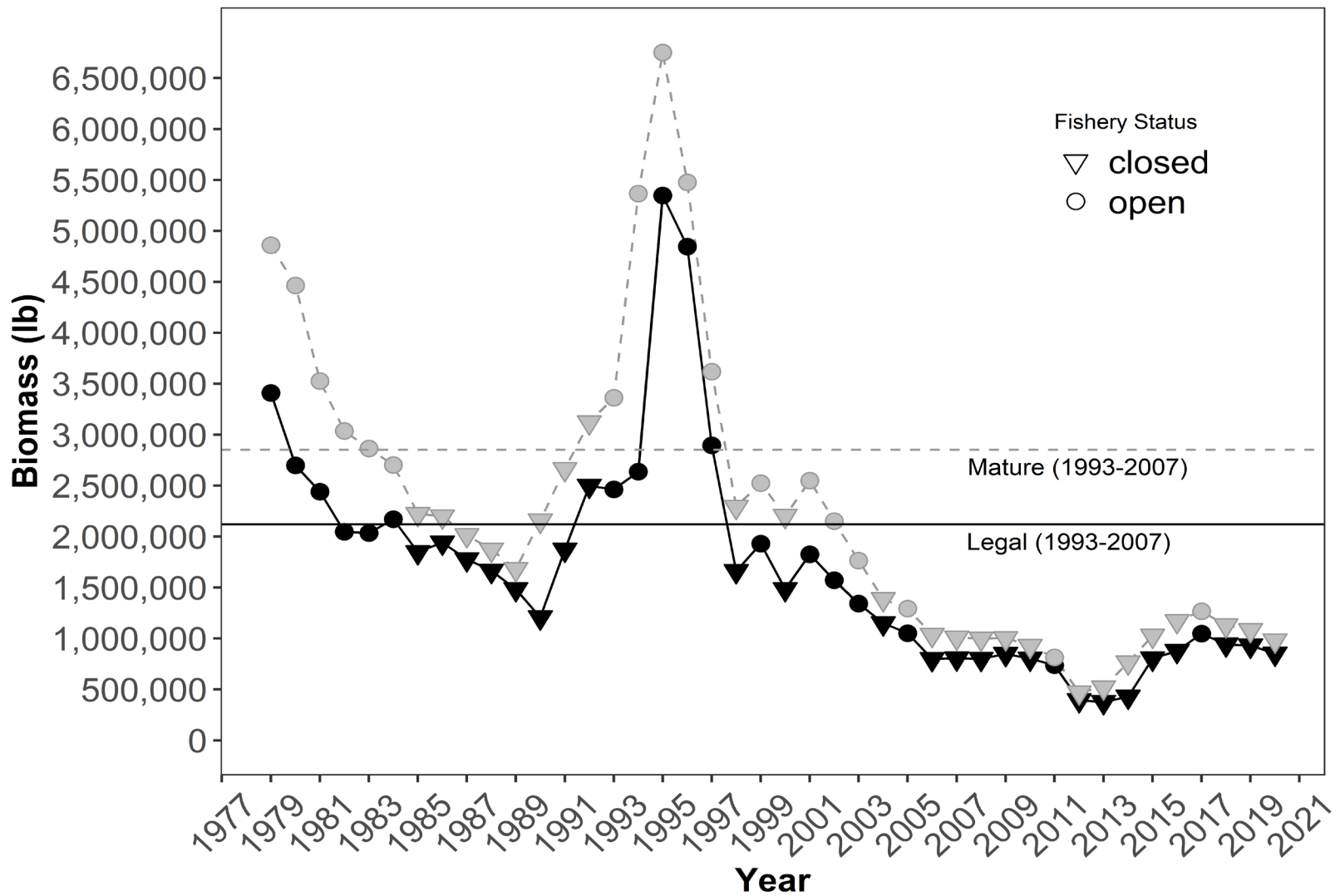
- New permit system put into place 7/1/18
- Permits due June 23rd
- Statewide harvest survey from 2017: **527 crab**
- 2018 harvest from permit: **3,250 crab**
- 2019 harvest from permits **2,123 crab**

11-A PU Harvest (#s of Crab)



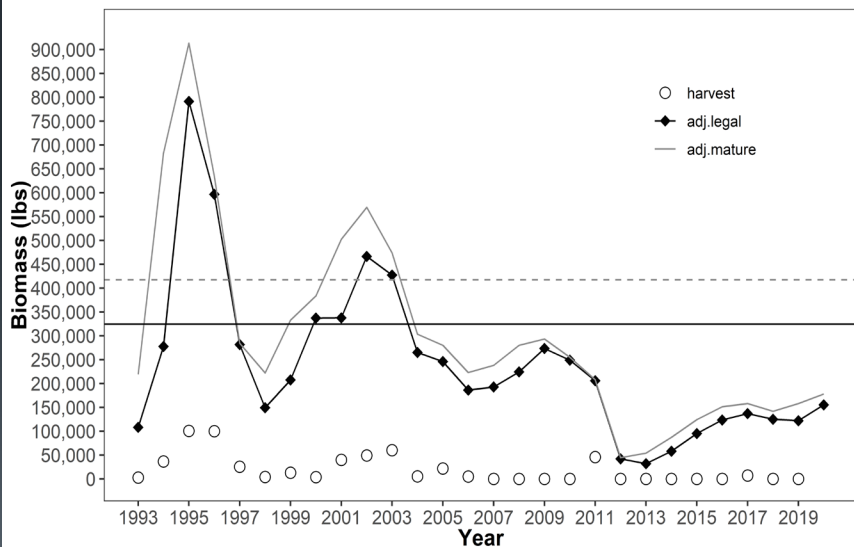
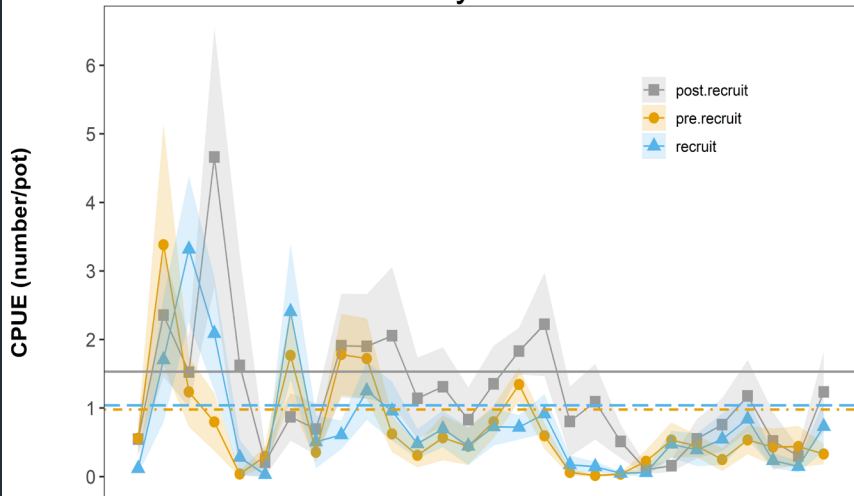
Season	Commercial fishery		Summer personal use fishery		Winter personal use fishery		Total allowable harvest	
	Allocation	Harvest	Allocation	Harvest	Allocation	Harvest	Target	Harvest
2017/18	2,410	2,516	3,012	1,663	602	1,949	6,024	6,128
2018/19	0	0	2,168	1,343	434	1,142	2,602	2,485
2019/20	0	0	1,566	1,446	313	243	1,879	1,680
2020/21	0	0	1,527	*	305	*	1,832	*

* = Data still being gathered.

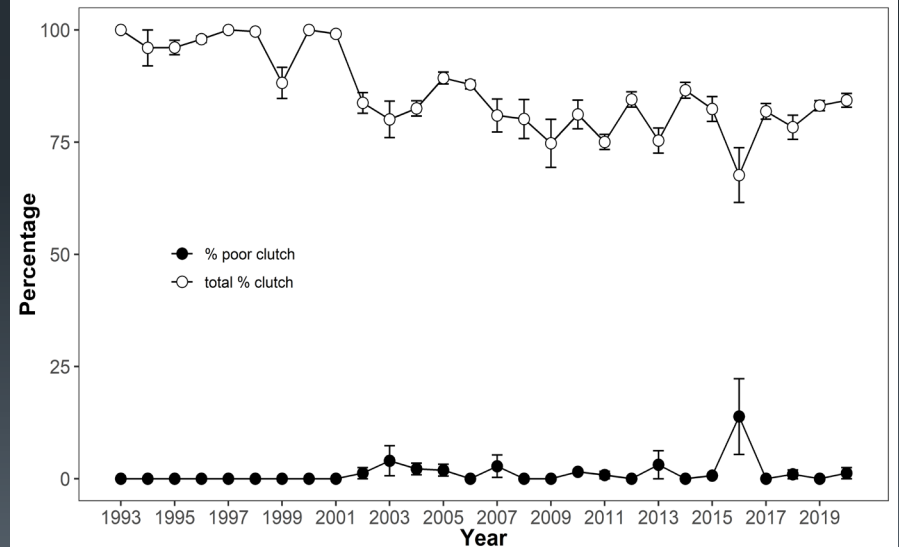
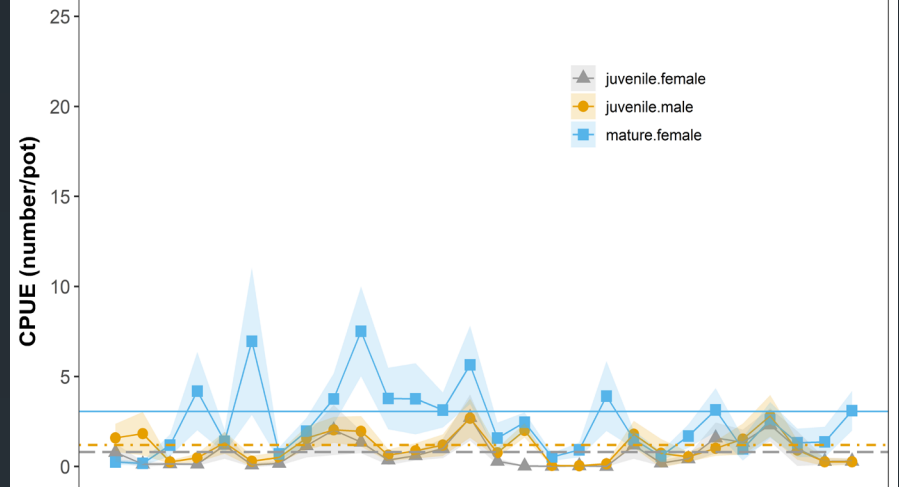


Pybus Bay

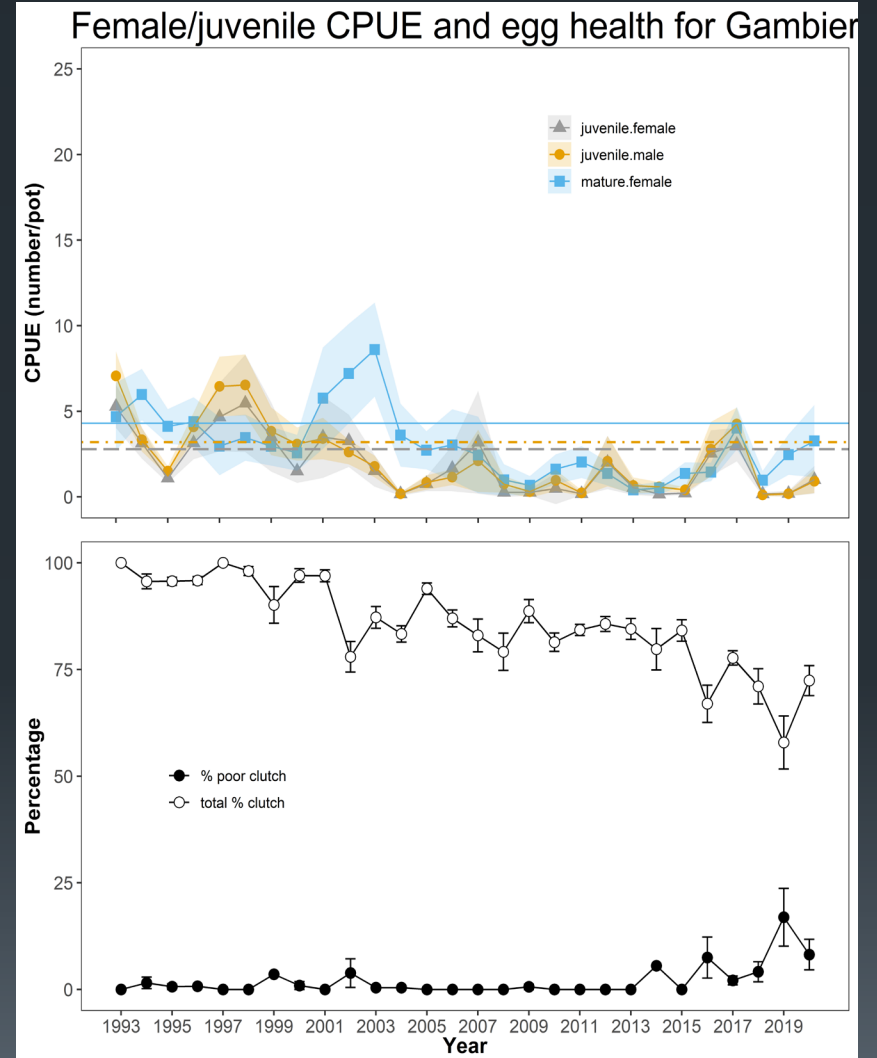
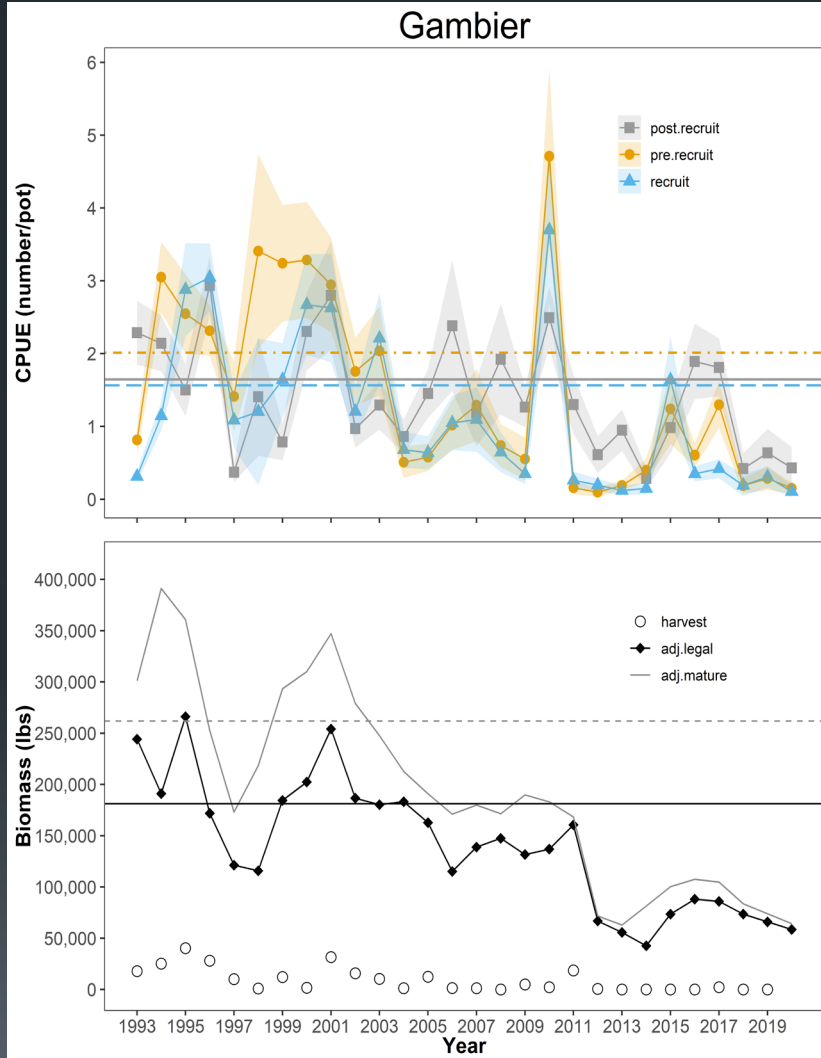
Pybus



Female/juvenile CPUE and egg health for Pybus

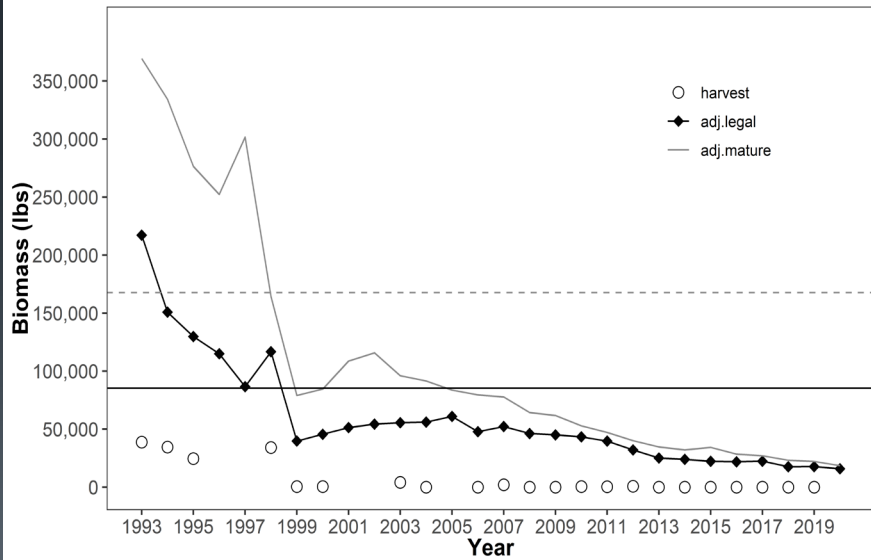
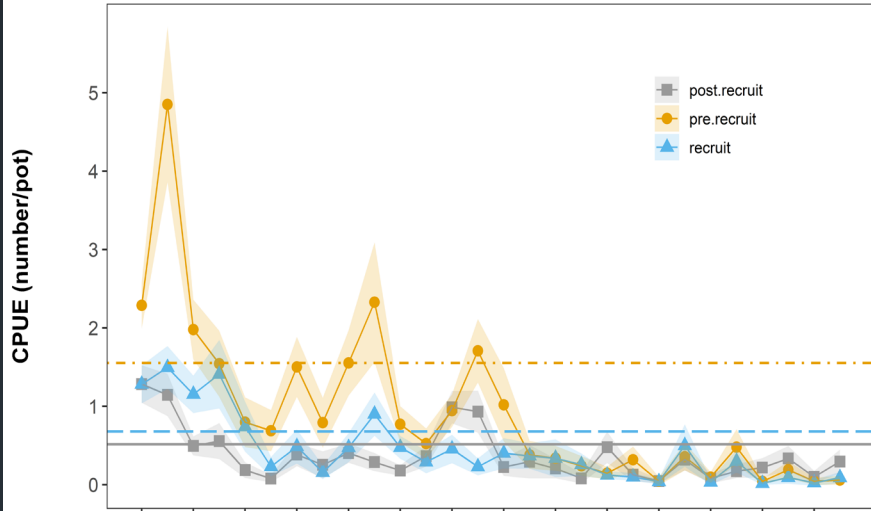


Gambier Bay

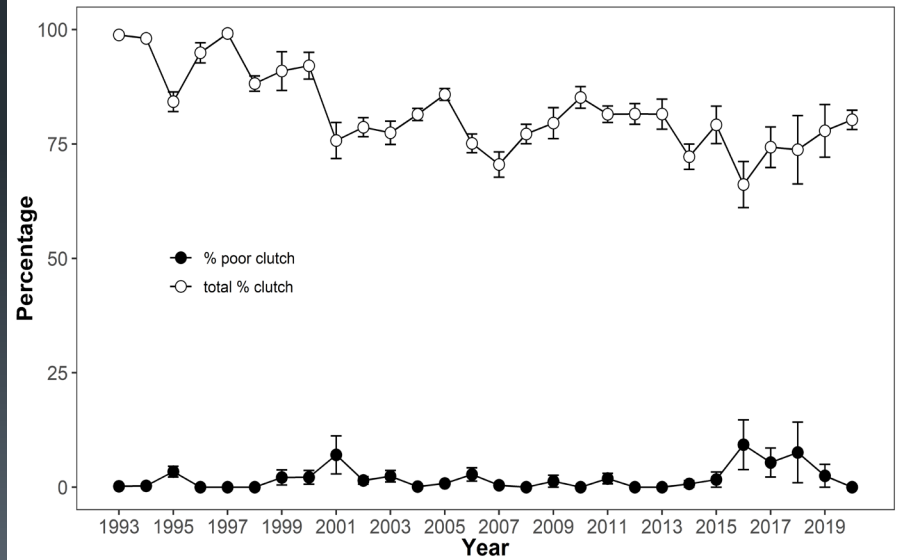
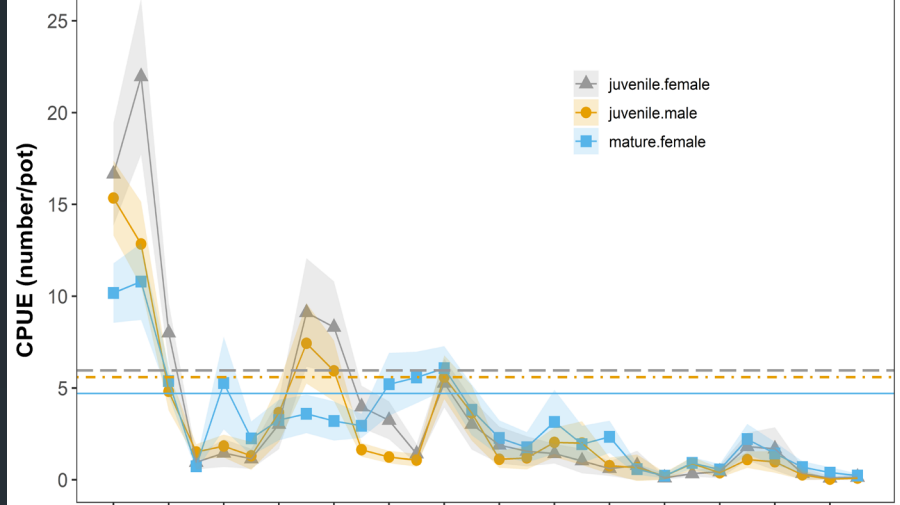


Peril Strait

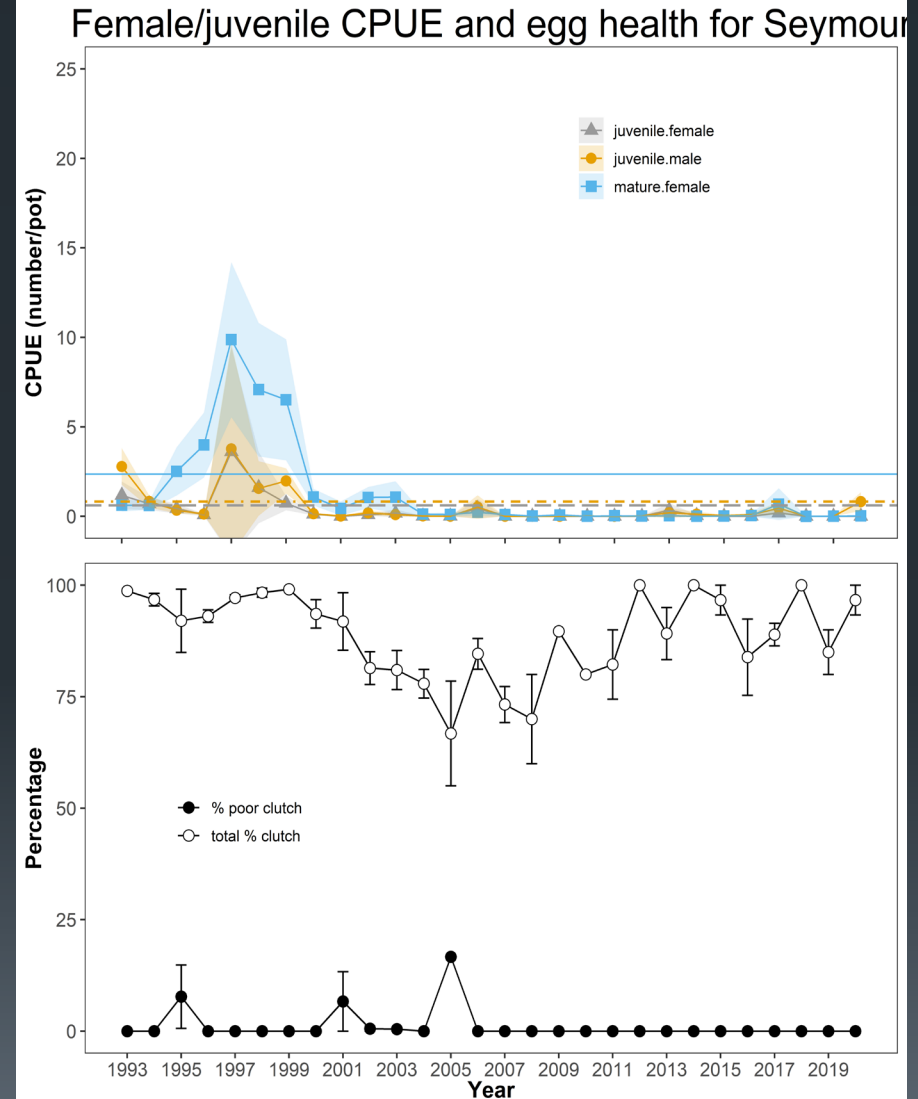
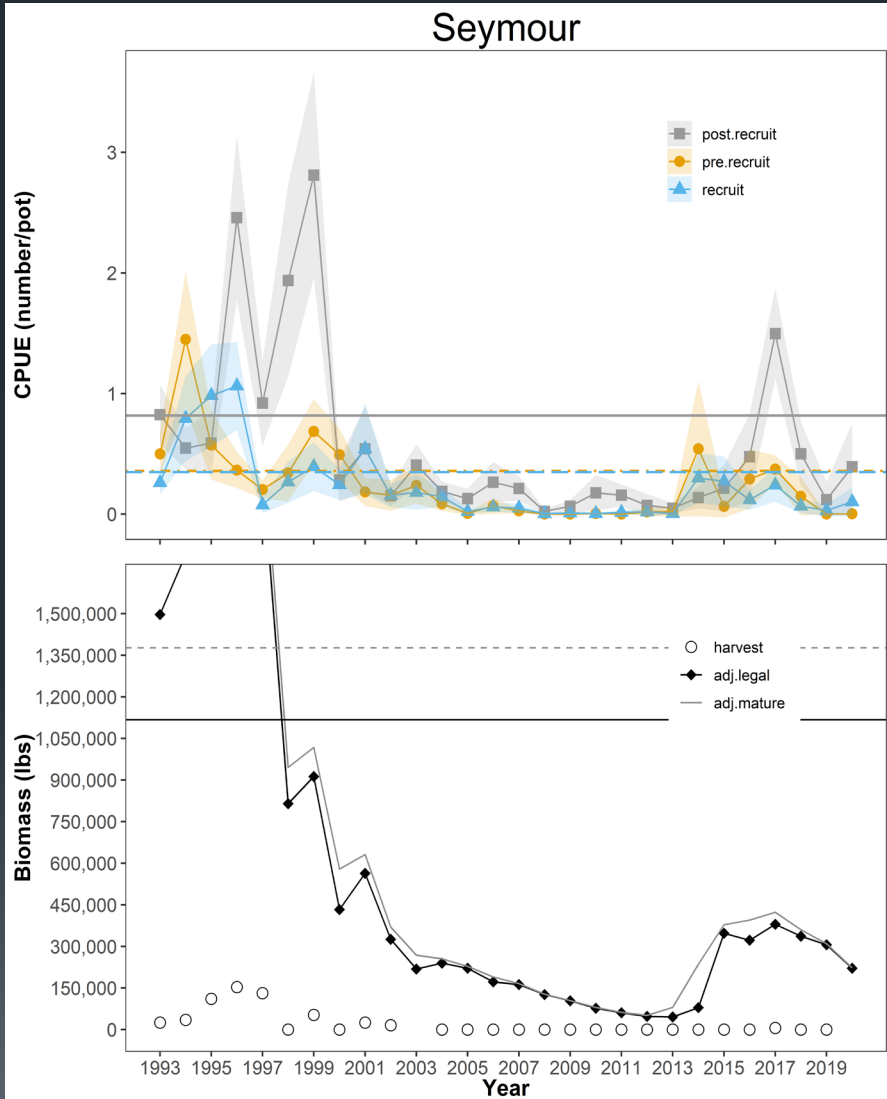
Peril



Female/juvenile CPUE and egg health for Peril

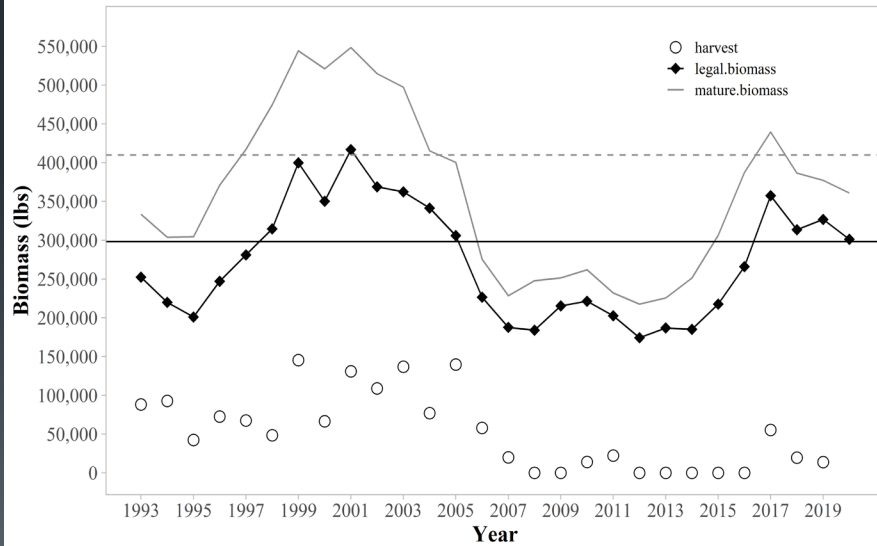
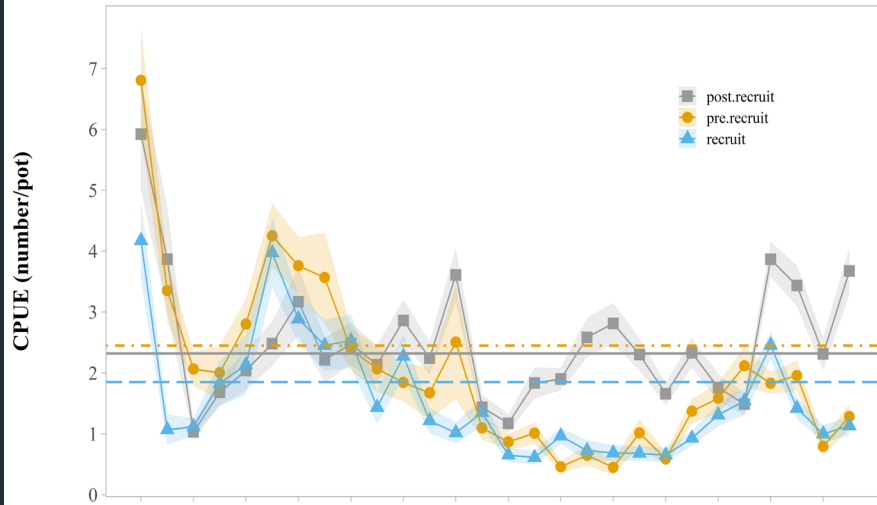


Seymour Canal

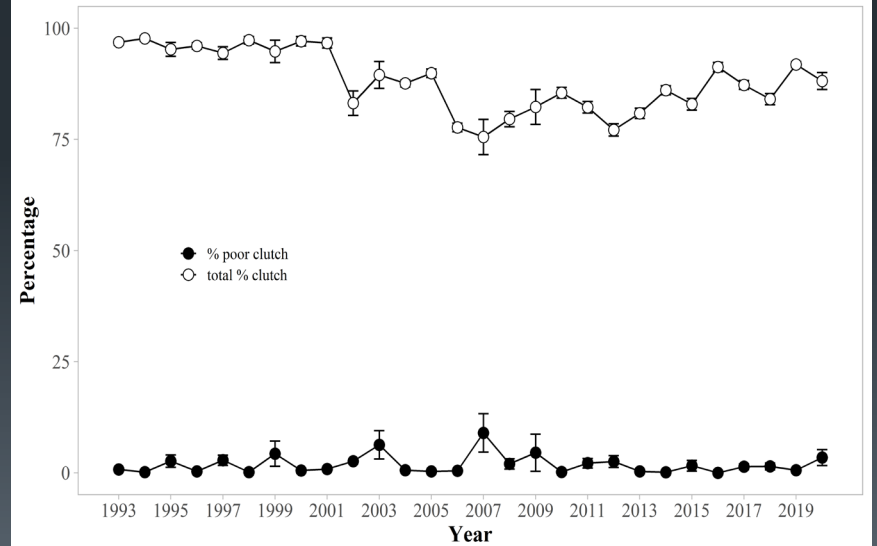
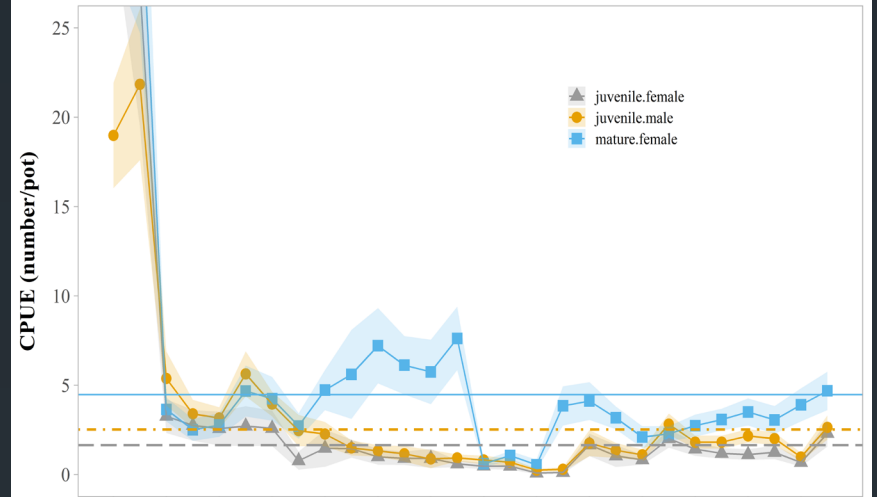


Juneau Area

Juneau

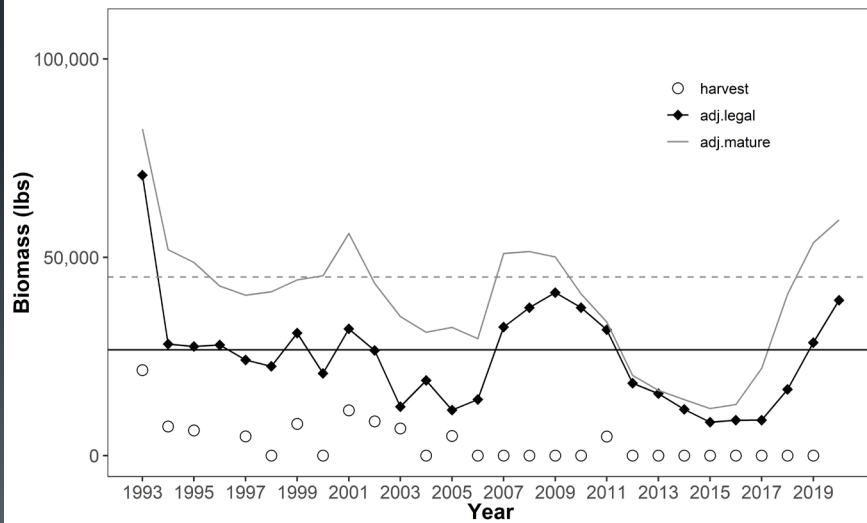
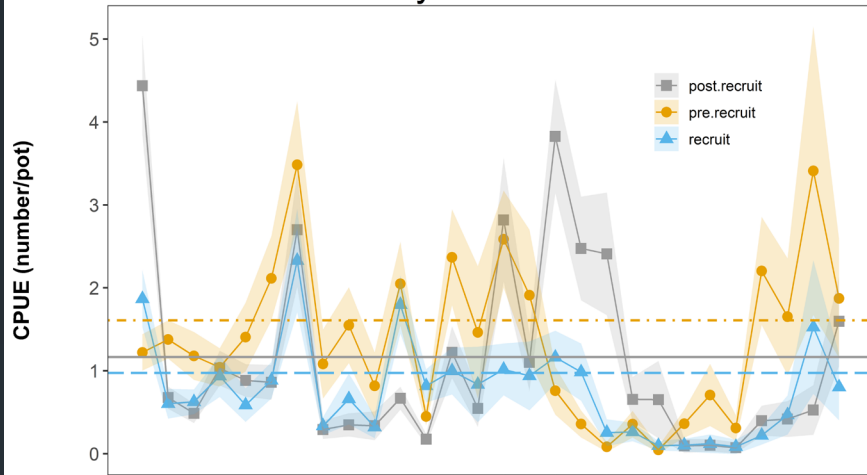


Female/juvenile CPUE and egg health for Juneau

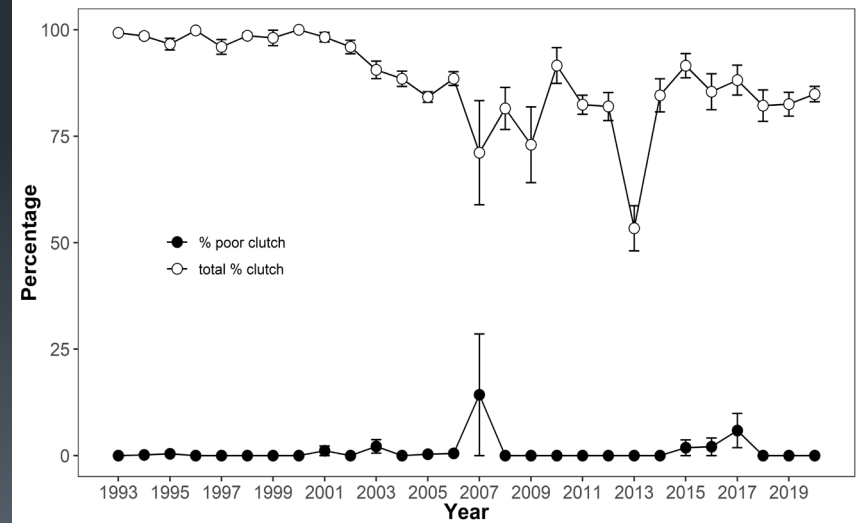
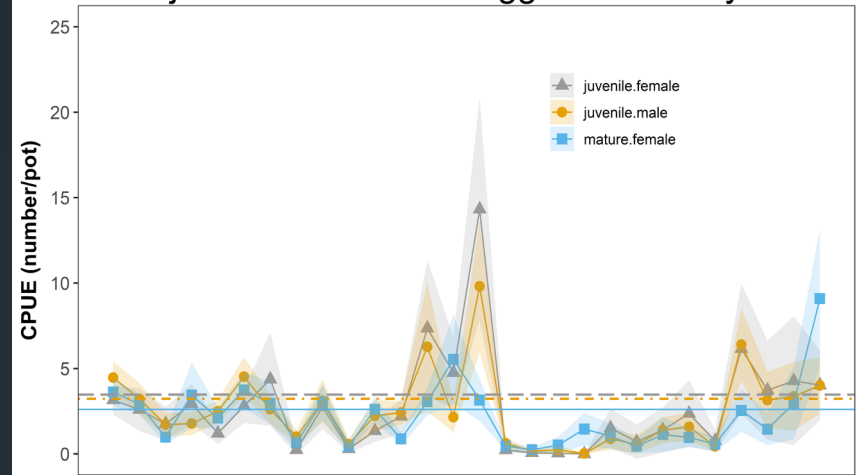


Lynn Sisters

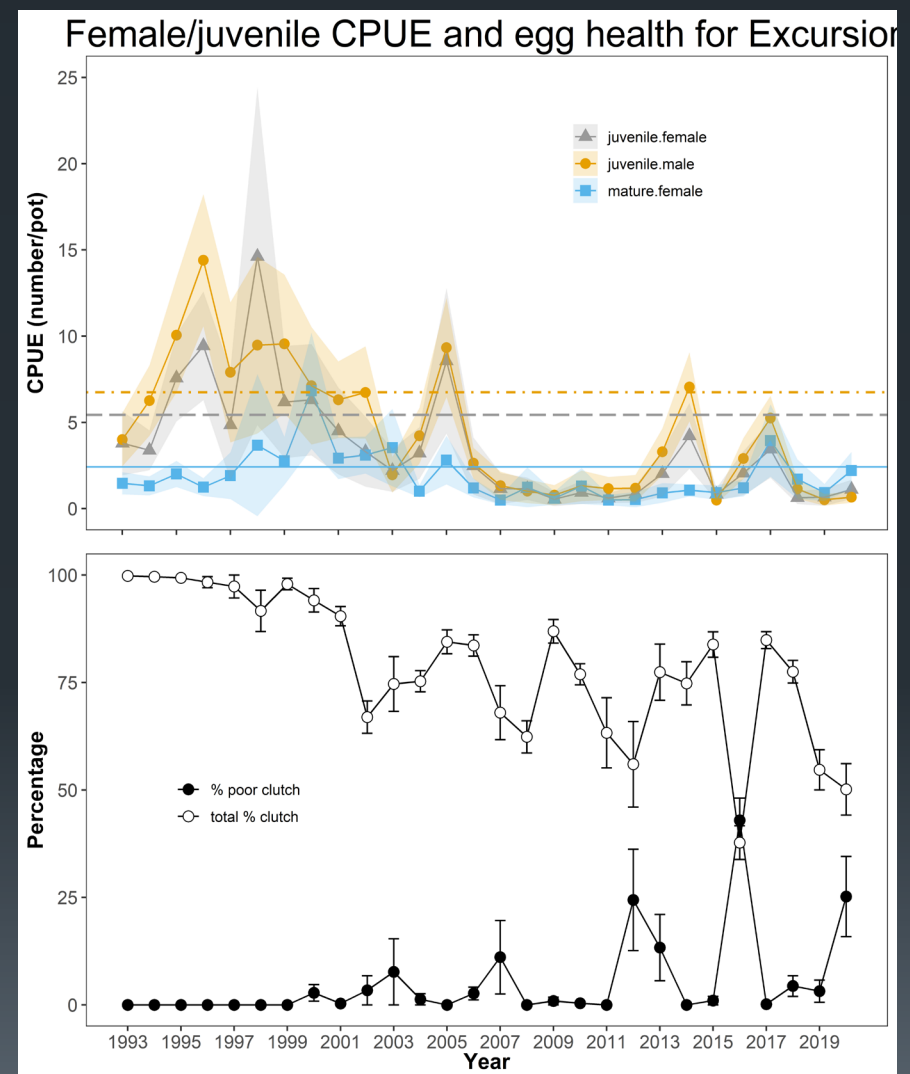
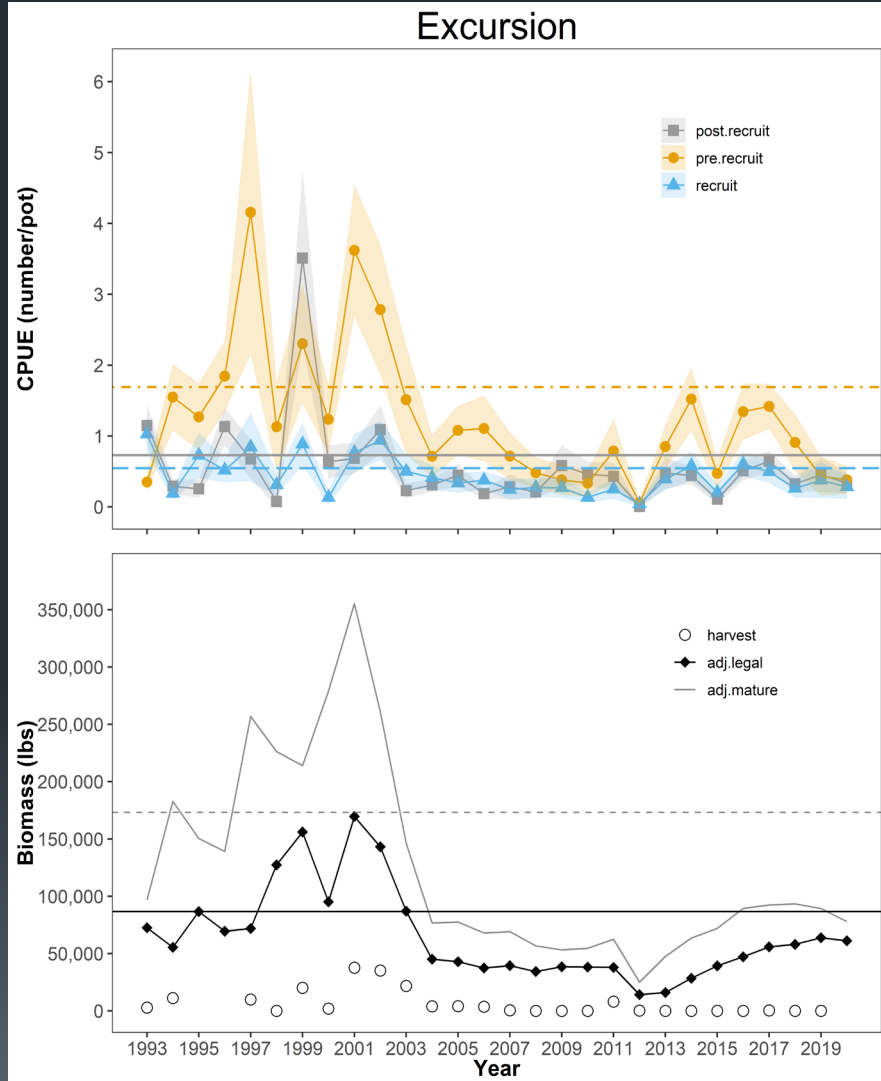
LynnSisters



Female/juvenile CPUE and egg health for LynnSiste



Excursion Inlet



Survey area	CSA Biomass of Legal Crab	CSA Biomass of Mature Crab	Adjusted Mature biomass	Mature harvest rate	Total GHL	Personal use catch	2020 Commercial GHL
Pybus Bay	50,380	57,760	177,938	0%	0	0	0
Gambier Bay	14,900	16,363	64,294	0%	0	0	0
Seymour Canal	24,147	24,275	222,717	0%	0	0	0
Peril Strait	5,779	6,741	18,561	0%	0	0	0
Juneau Area	301,219	361,007	361,007	7.0%	22,270	15,162	10,108
Lynn Sisters	22,435	34,022	59,431	0%	0	0	0
Excursion Inlet	20,775	26,450	77,917	0%	0	0	0
Other Areas	393,008	470,765	877,729	10%			87,773
Blue King Crab	4,660	5,582	10,408				0
Total	837,303	1,002,966	1,870,003				97,881