

Southeast Alaska Red King Crab Stock Assessment



King and Tanner Task Force Mtg.
December 3, 2021

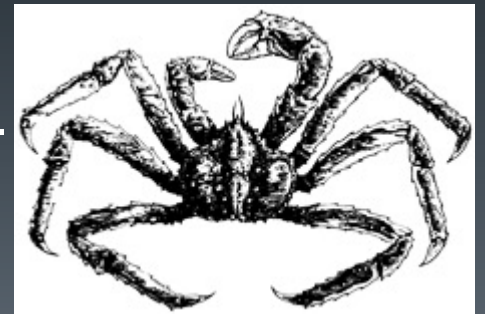


Image: northpacificseafoods.com



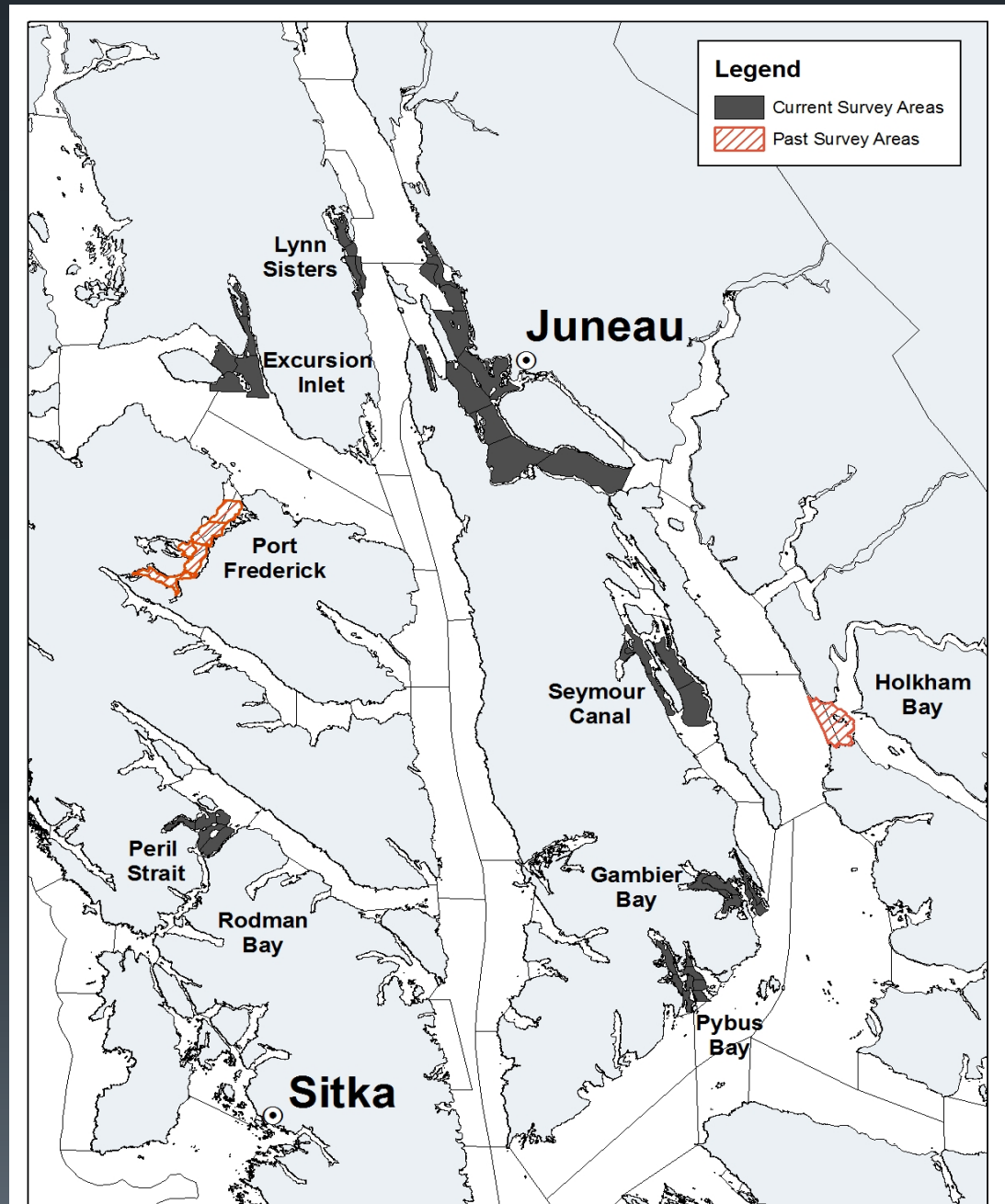
RKC Assessment / Management



- Assessment
 - 7 areas surveyed with ~545 pot lifts
 - Biomass estimated using Catch-Survey Analysis (CSA) model
- Management plan
 - Season November 1 – January 24
 - Appropriate harvest rate
 - Regional GHL set using survey biomass
 - Pot limits based on GHL
 - Minimum GHL threshold of 200,000 lbs legal crab
 - Mark/Recapture expansion factor incorporated into biomass estimate
 - Males only, 7-inch minimum CW

Southeast Alaska

Major Commercial Red King Crab Fishing Grounds



Tagging Project:

- Collect growth and movement.
- Tag is retained though the molt, placed in the isthmus muscle.
- 15 pots set in each bay in areas of high abundance.
- Two bays: Seymour Canal and Excursion Inlet.
 - Seymour crab tagged: 2019 -- 134
2020 – 42
2021-- 1
 - Excursion crab tagged: 2019 -- 401
2020 – 242; 7 recaptures
2021– 154; 7 recaptures
- The department will continue to tag opportunistically on the survey.
- If you catch a crab with a tag.
 - Release, if not legal.
 - Record Lat. Long. and tag # if you can.
 - There are **No Rewards**.



PU King Crab Permits (outside 11-A)

- New permit system put into place 7/1/18
- Permits due June 23rd
- Statewide harvest survey from 2017: **527 crab**
- 2018 harvest from 2,265 permits: **1,637 crab**
- 2019 harvest from 2,772 permits: **1,107 crab**
- 2020 harvest from 3,410 permits: **1,211 crab**
- 2021 harvest from 1,349 permits: **302** (1,155 permits still fishing)
- **Catch by species; 22 BKC, 51 GKC, 4,184 RKC**

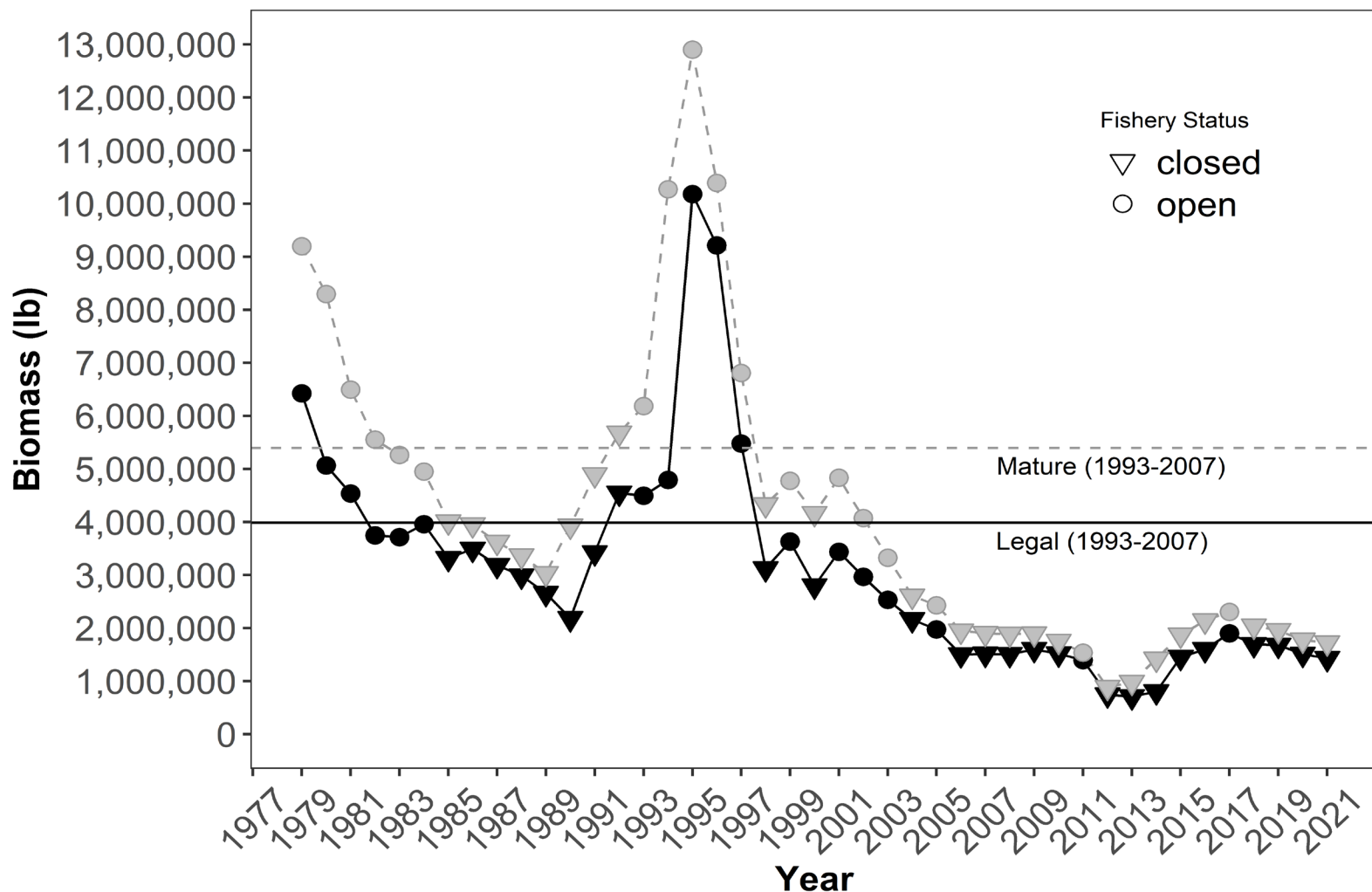
11-A PU Harvest (#s of Crab)

6

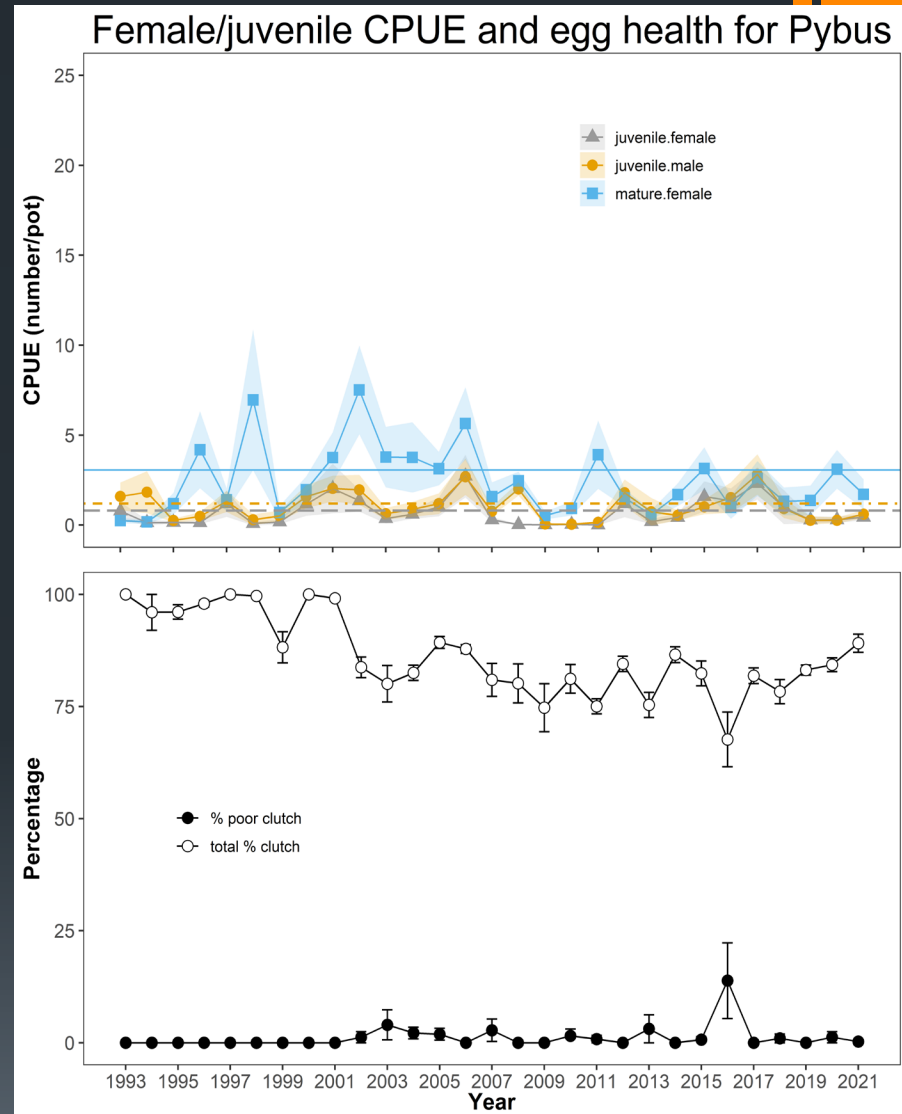
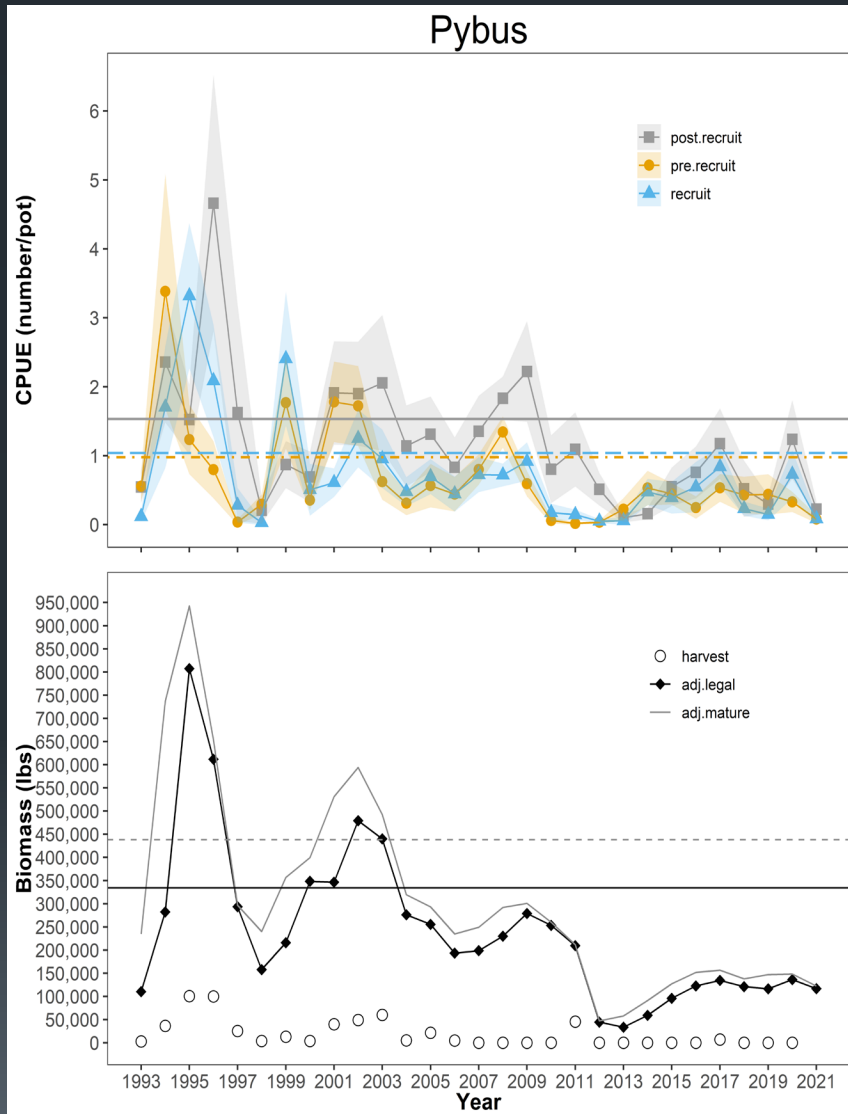
Season	Commercial fishery		Summer personal use fishery		Winter personal use fishery		Total allowable harvest	
	Allocation	Harvest	Allocation	Harvest	Allocation	Harvest	Target	Harvest
2017/18	2,410	2,516	3,012	1,663	602	1,949	6,024	6,128
2018/19	0	0	2,168	1,343	434	1,142	2,602	2,485
2019/20	0	0	1,566	1,446	313	243	1,879	1,680
2020/21	0	0	1,527	1,203	305	103	1,832	1,306
2021/22	0	0	1,601	1,114	320	*	1,921	

* = Data still being gathered.

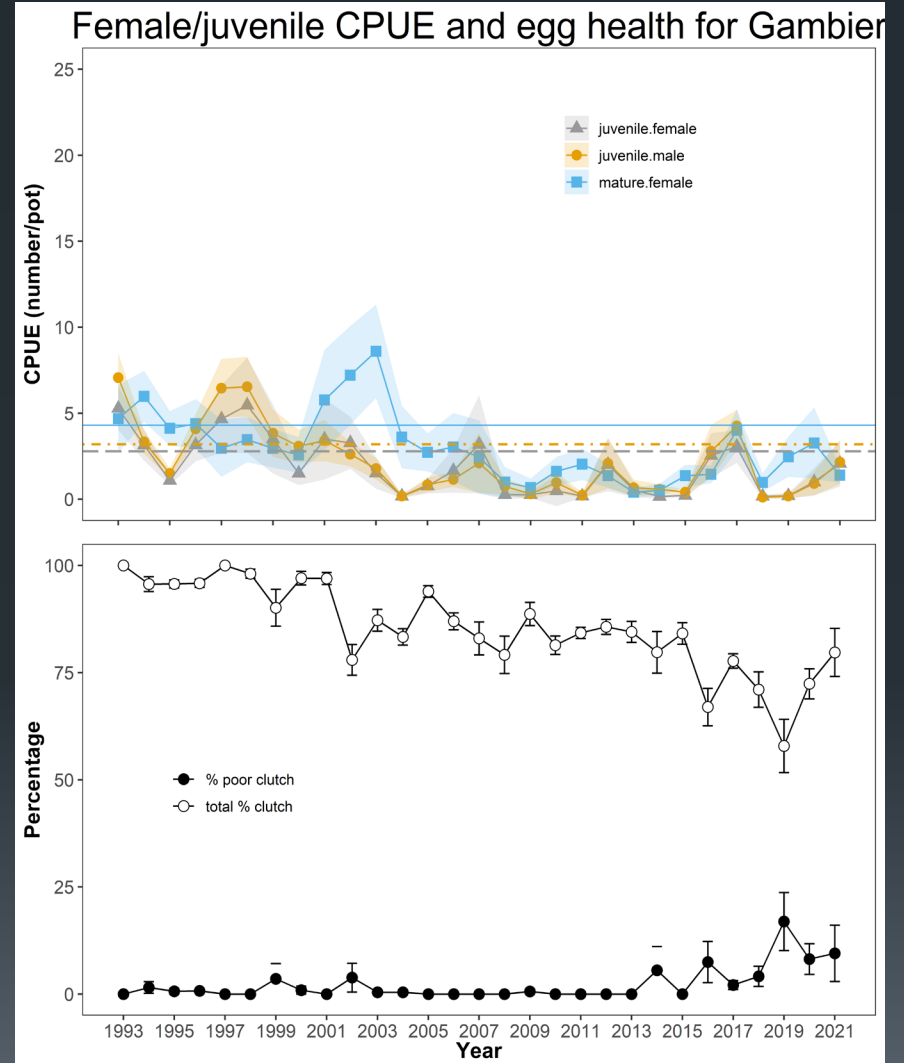
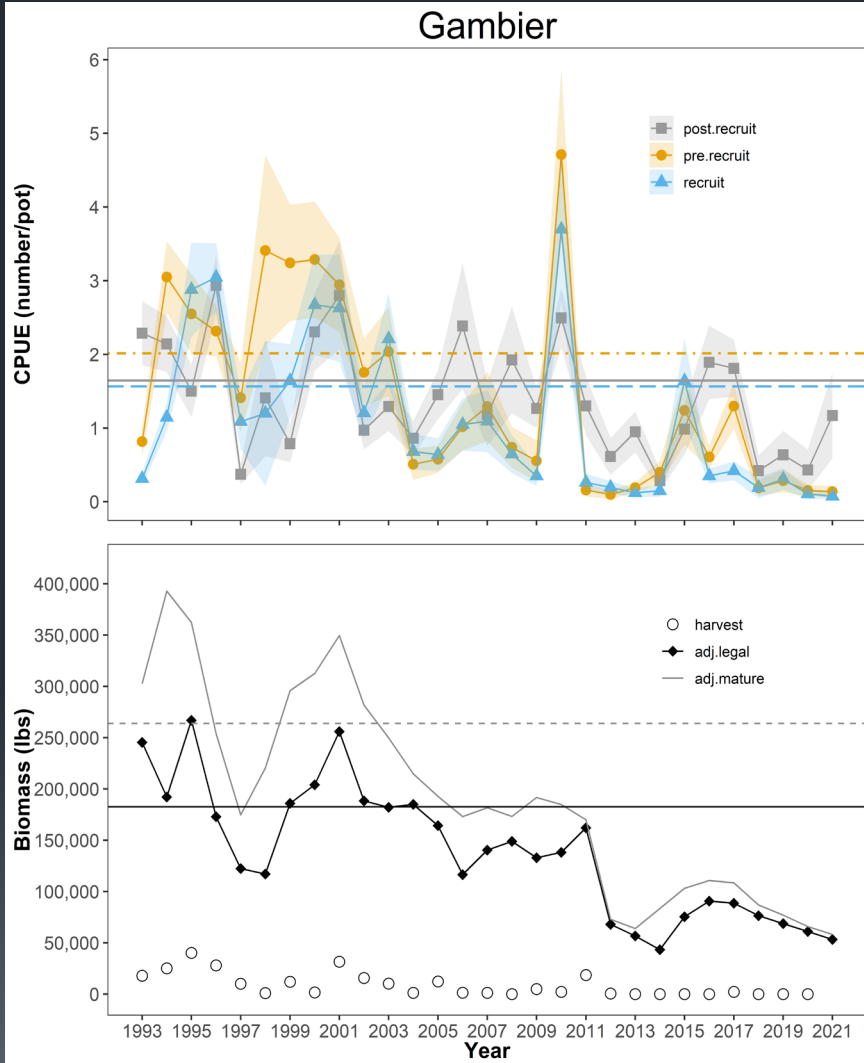
Regional biomass estimates for Southeast Alaska red king crab



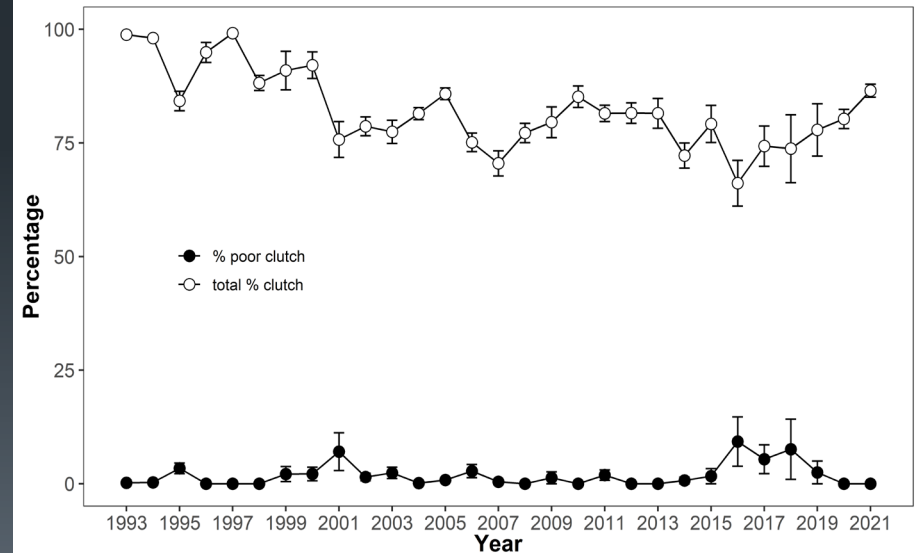
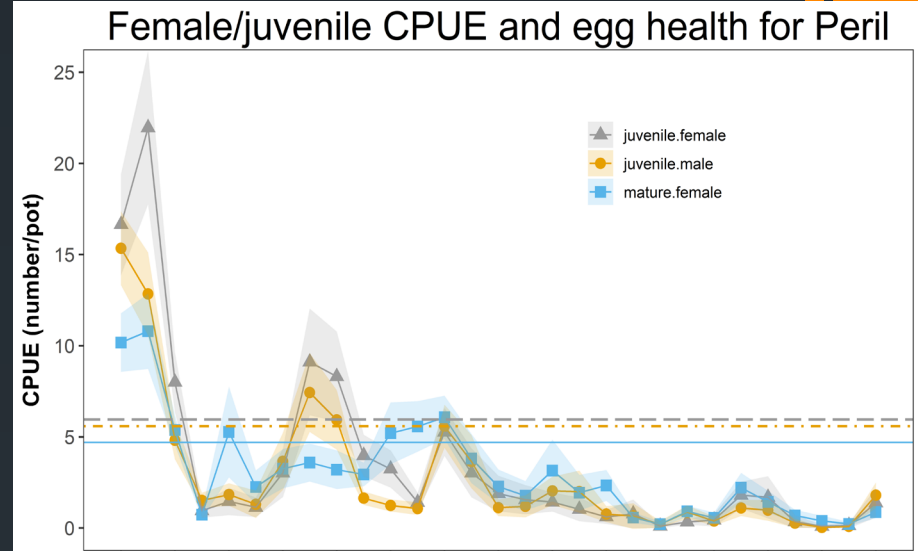
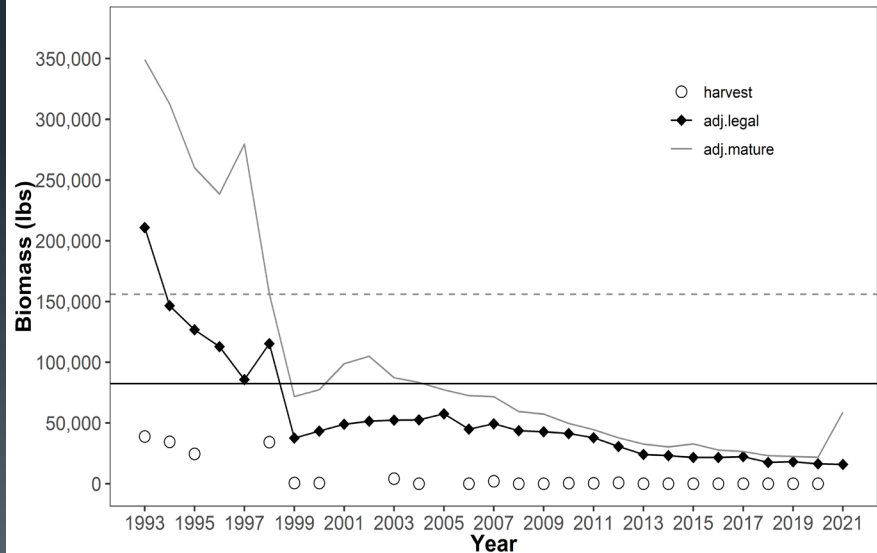
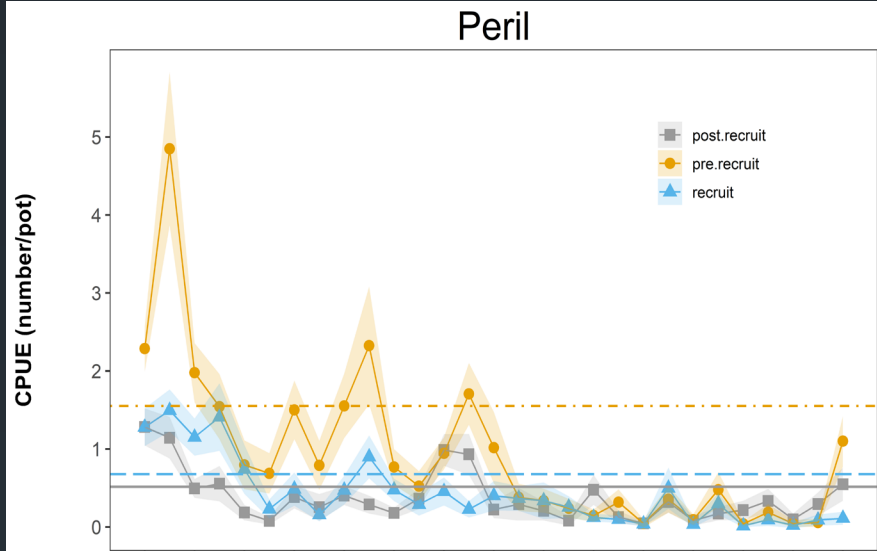
Pybus Bay



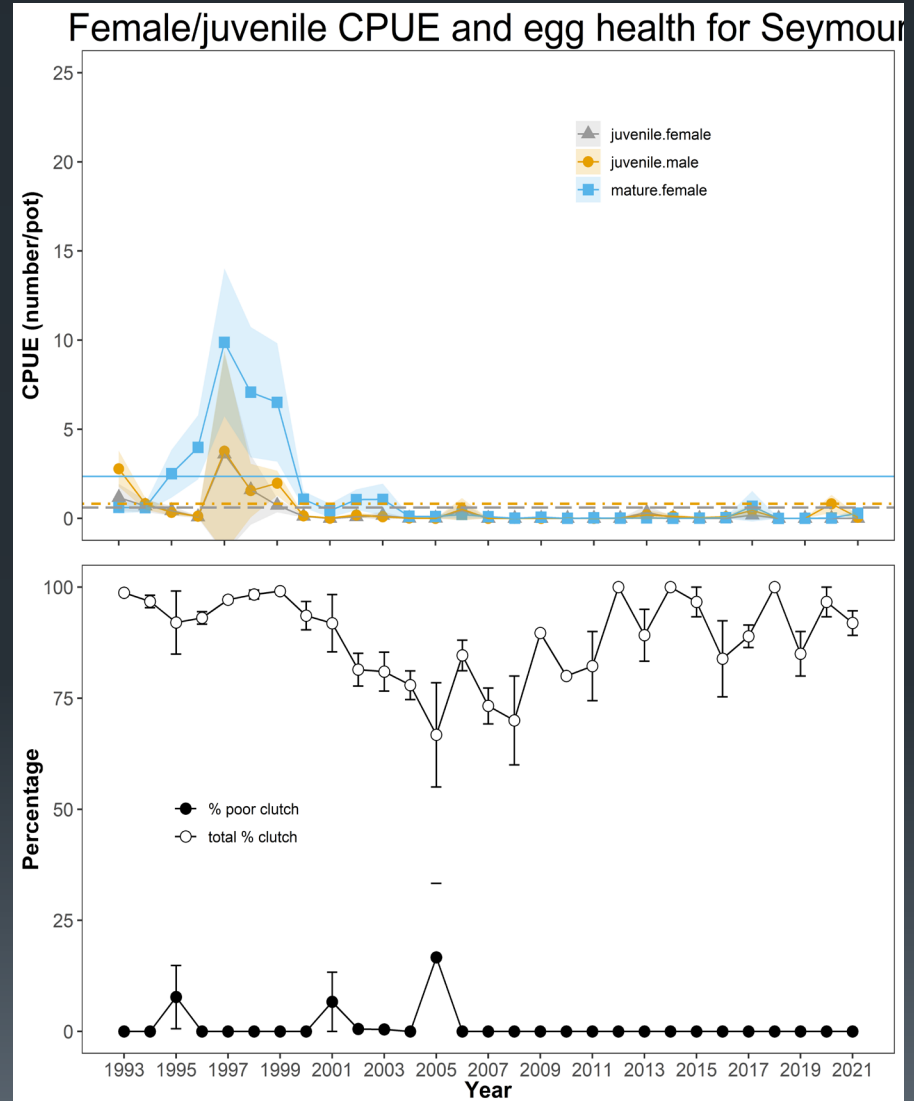
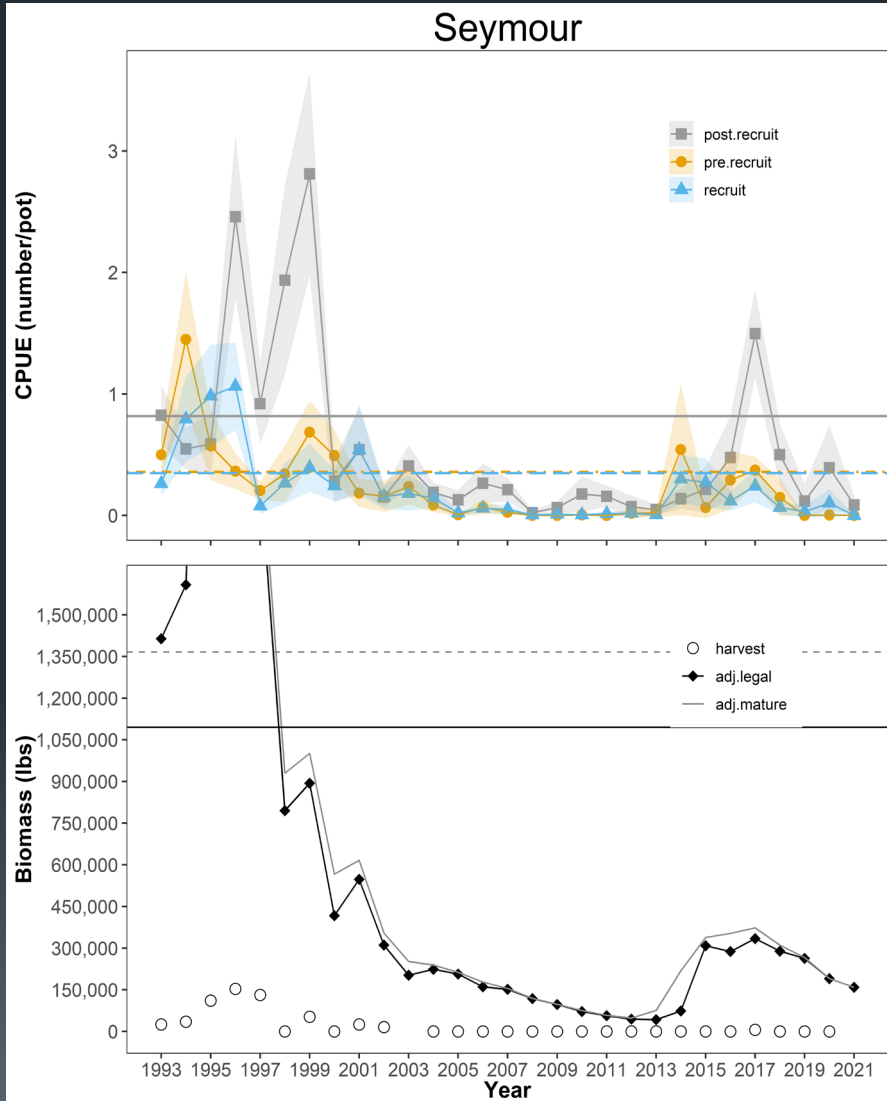
Gambier Bay



Peril Strait

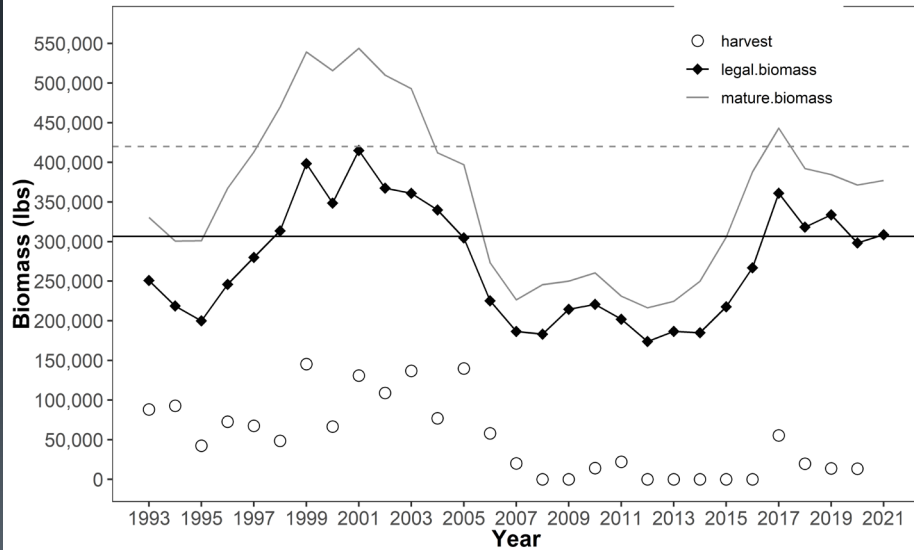
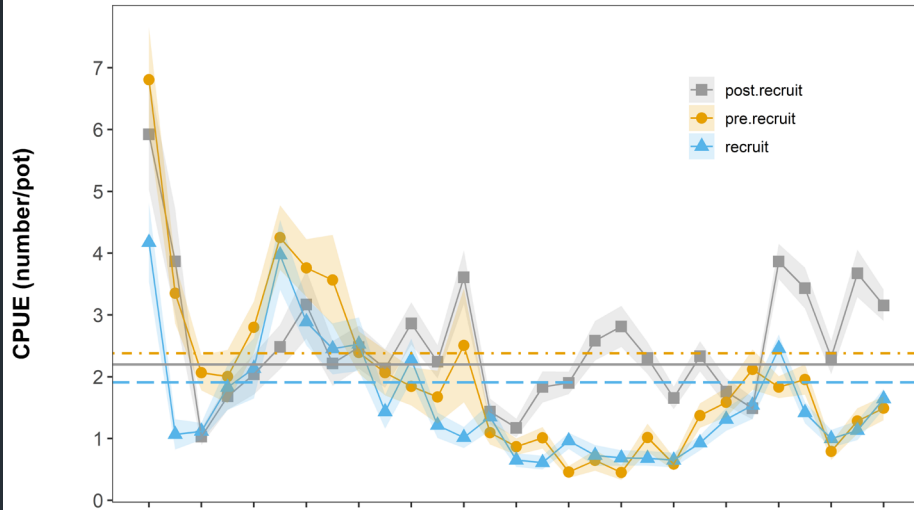


Seymour Canal

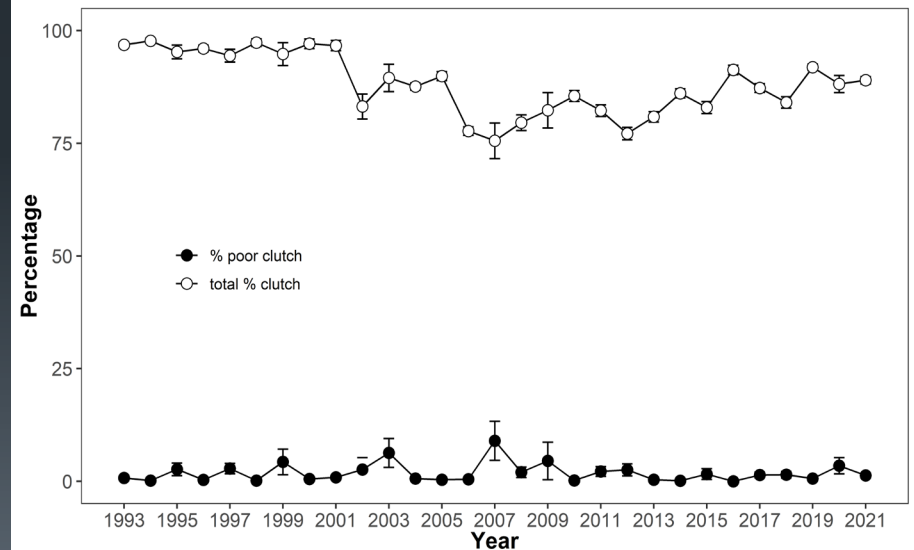
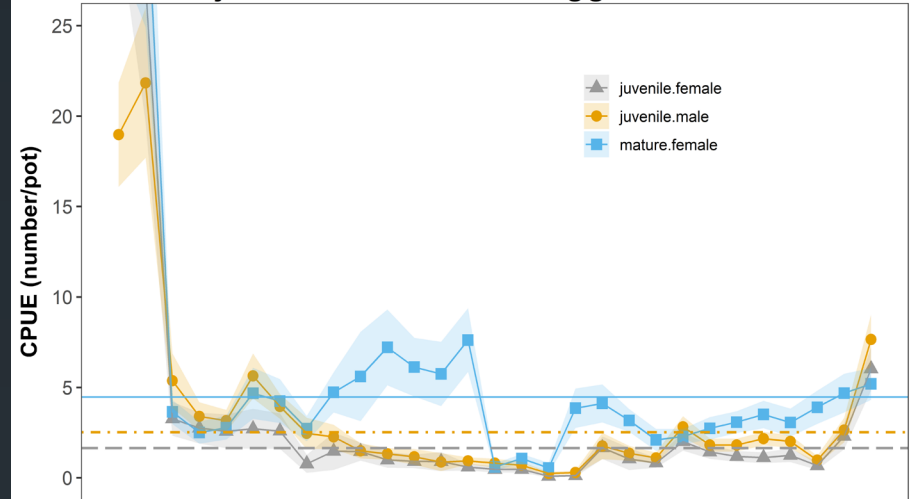


Juneau Area

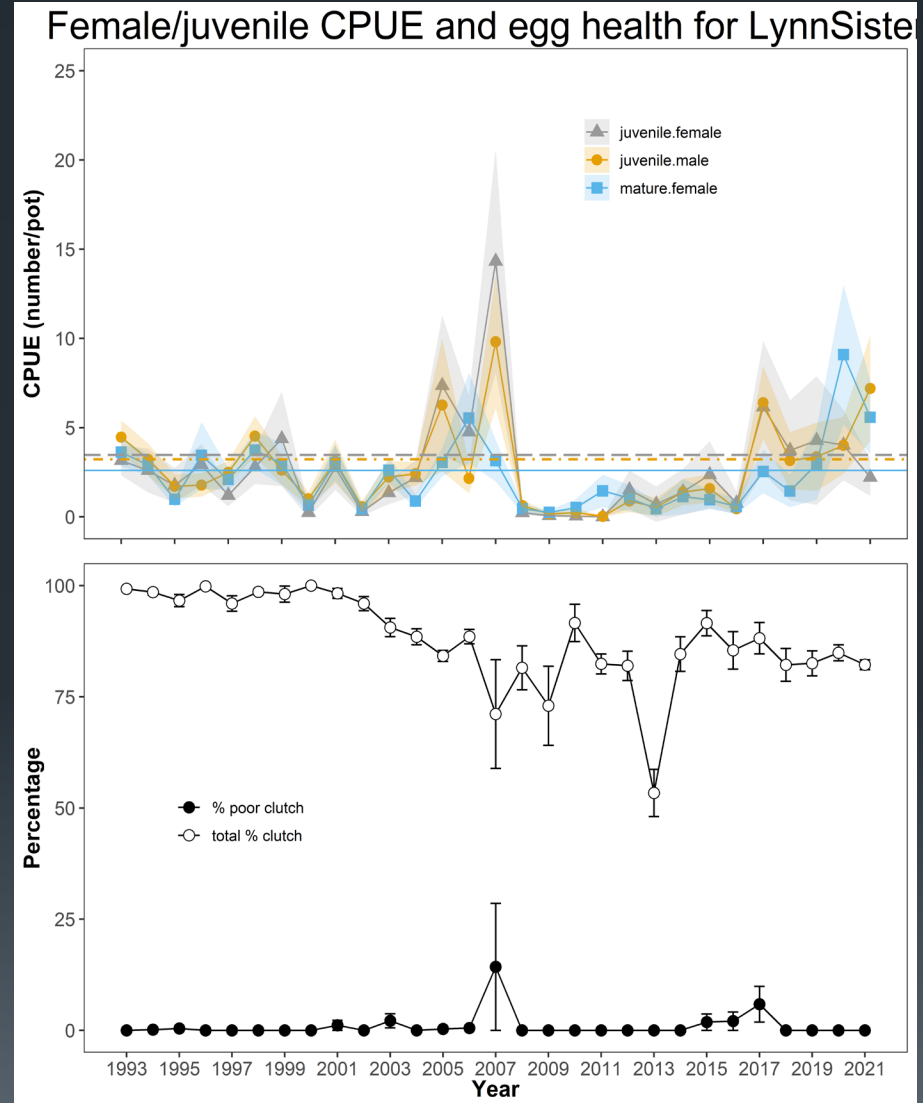
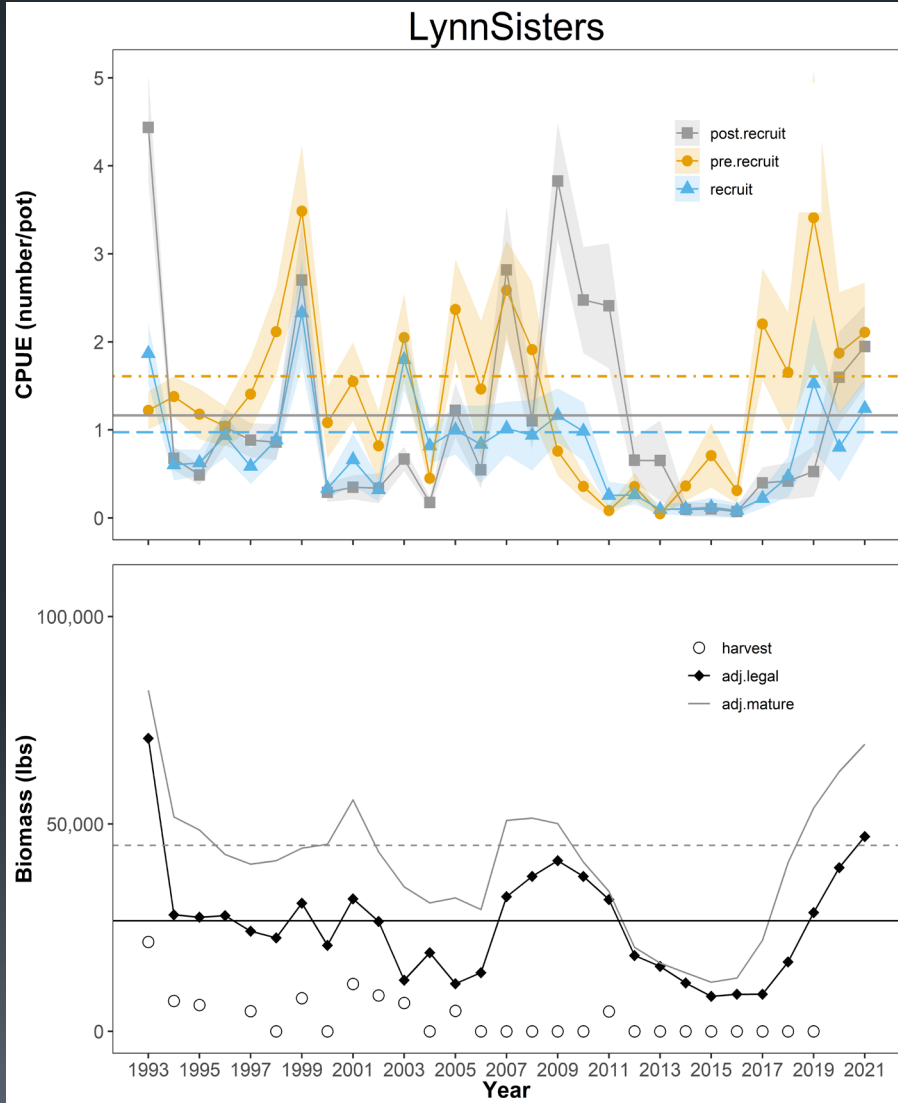
Juneau



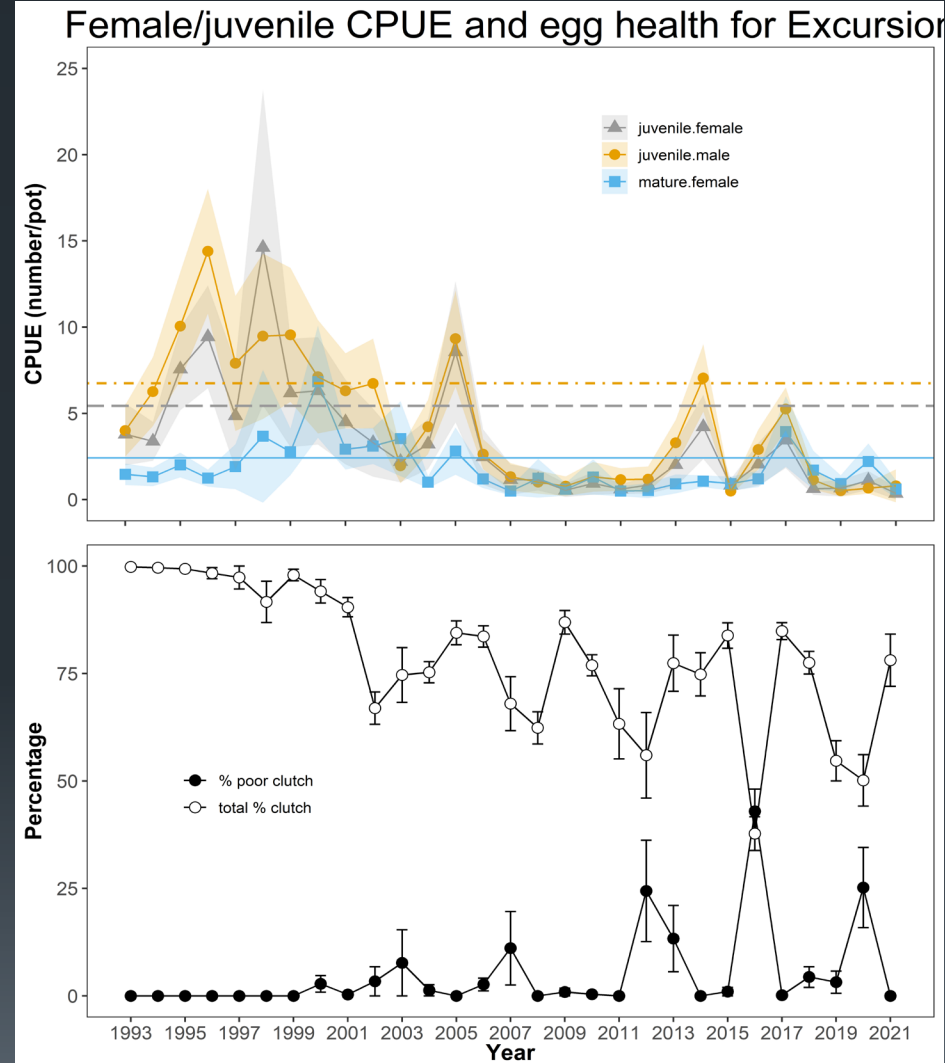
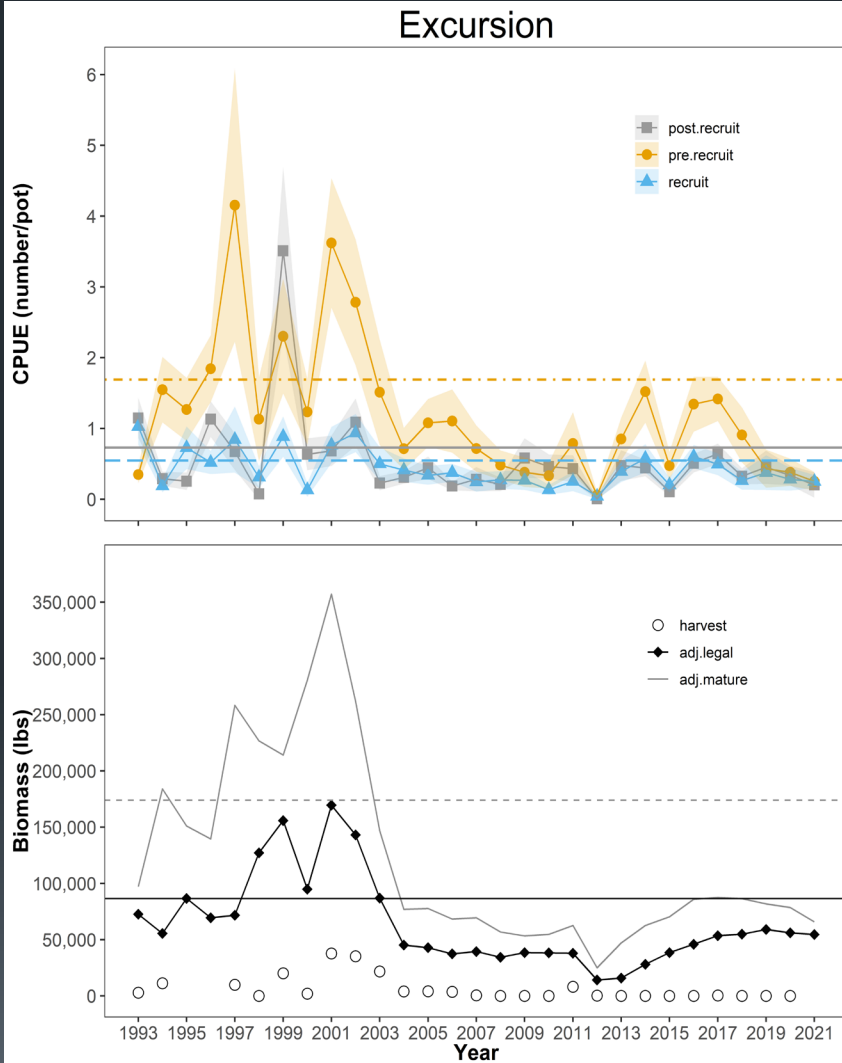
Female/juvenile CPUE and egg health for Juneau



Lynn Sisters



Excursion Inlet



Survey area	Adjusted Legal Crab	Adjusted Mature biomass	Mature harvest rate	Total GHL	Personal use catch	2021 Commercial GHL
Pybus Bay	116,874	122,427	0%	0	0	0
Gambier Bay	53,293	58,281	0%	0	0	0
Seymour Canal	158,946	158,946	0%	0	0	0
Peril Strait	15,963	58,946	0%	0	0	0
Juneau Area	308,746	377,095	7.0%	26,397	15,838	10,559
Lynn Sisters	46,965	69,252	0%	0	0	0
Excursion Inlet	54,550	65,785	0%	0	0	0
Other Areas	675,226	814,141	10%	81,414	1,000	80,414
Blue King Crab	8,007	9,654				0
Total	1,438,571	1,734,528				90,973