



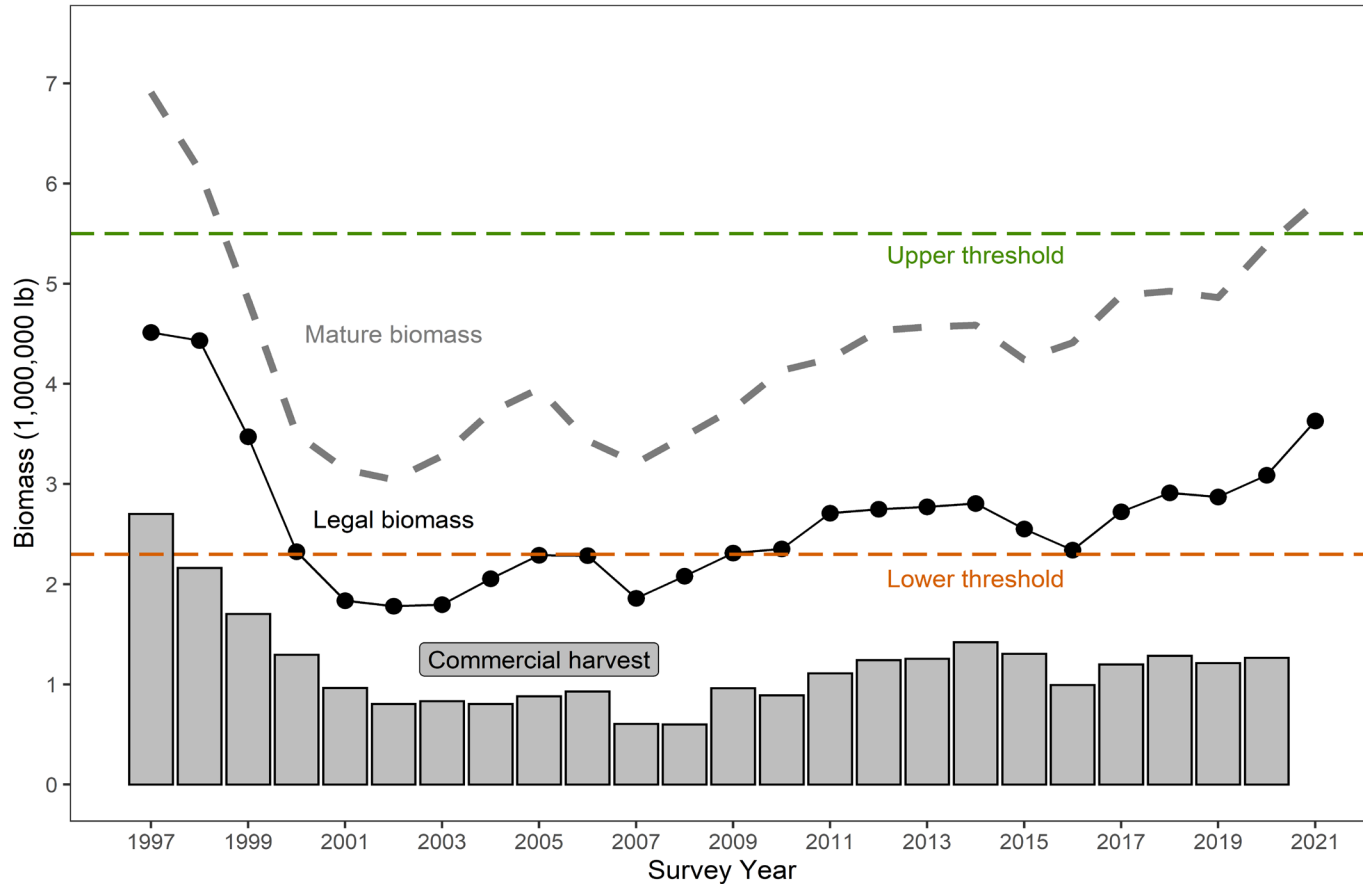
2021 Tanner Crab Survey Results



KING AND TANNER TASK FORCE MEETING
12.3.2021

Trends in Male Tanner crab:

Southeast Alaska Tanner crab regional biomass (survey and non areas)





SEAK Mature
Tanner Crab
Biomass:

2020/2021:

Estimate: 4.95 million pounds

2021/2022 (current season):

Estimate: 5.81 million pounds

Tanner Crab Harvest Strategy

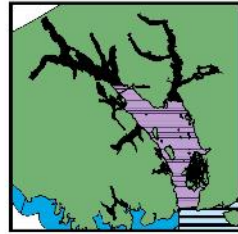
5 AAC 35.113

Pots Registered	Additional Fishing Days	
	<i>Mature Biomass is Between 2,300,000 and 5,500,000 lb</i>	<i>Mature Biomass is Greater than 5,500,000 lb</i>
1,600 – 2,399	4 Additional Days	5 Additional Days
2,400 – 3,199	3 Additional Days	4 Additional Days
3,200 – 3,999	2 Additional Days	3 Additional Days
4,000 – 5,599	1 Additional Days	2 Additional Days
5,600 – 7,000	0 Additional Days	1 Additional Days

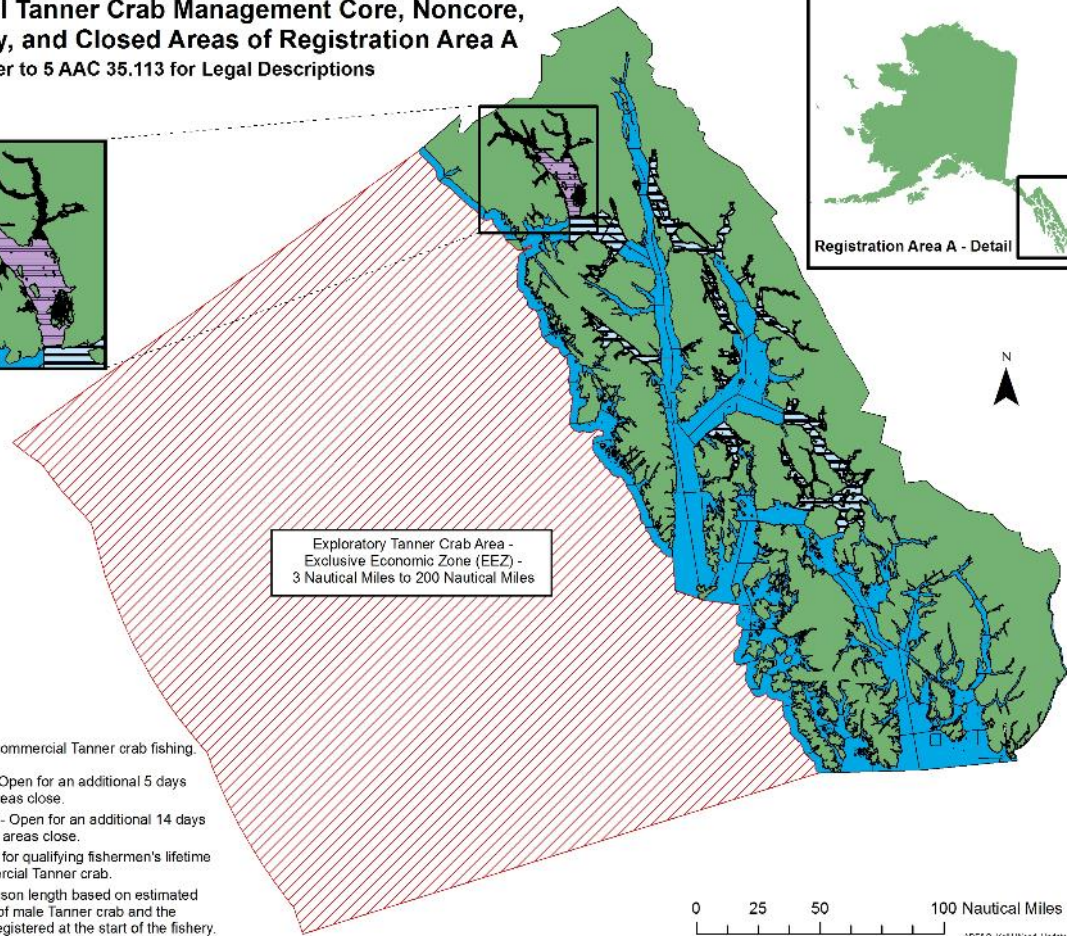
2021/2022

Core and Non-Core Survey Areas

Commercial Tanner Crab Management Core, Noncore, Exploratory, and Closed Areas of Registration Area A Refer to 5 AAC 35.113 for Legal Descriptions



Registration Area A - Detail



Exploratory Tanner Crab Area -
Exclusive Economic Zone (EEZ) -
3 Nautical Miles to 200 Nautical Miles

Legend

- Areas closed to commercial Tanner crab fishing.
- Noncore Areas - Open for an additional 5 days after the 'Core' areas close.
- ▨ Exploratory Area - Open for an additional 14 days after the noncore areas close.
- ▨ Core Areas open for qualifying fishermen's lifetime permit for commercial Tanner crab.
- ▨ Core Areas - Season length based on estimated mature biomass of male Tanner crab and the number of pots registered at the start of the fishery.



ADF&G, K8111/Noed, Updated: 2018

Catch Survey Analysis (CSA) Overview



Highlights →

- **5.81 million pounds of mature male crab (>108 mm carapace width).**
- **3.63 million pounds of legal male crab (>140 mm carapace width).**
- **Increase of 0.57 million pounds of legal male Tanner crab (18.6%) from the 2020 estimate.**

Stock Health:

- Poor in ONE area
- Below average in ONE area
- Moderate in FOUR areas.
- Above average in TWO areas.
- Healthy in FOUR areas.

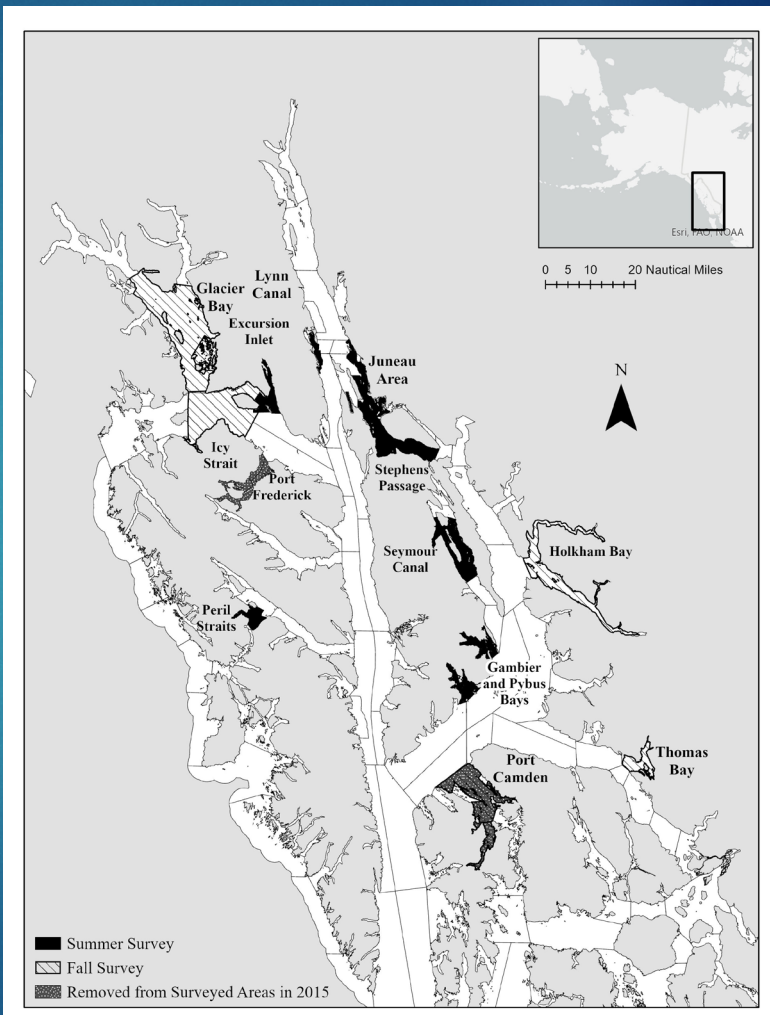
Survey Areas

Fall Survey:

Icy Strait
Glacier Bay
Thomas Bay
Holkham Bay

Summer Survey:

Stephens Passage
Seymour Canal
North Juneau
Excursion Inlet
Pybus Bay
Gambier Bay
Peril Strait
Lynn Sisters



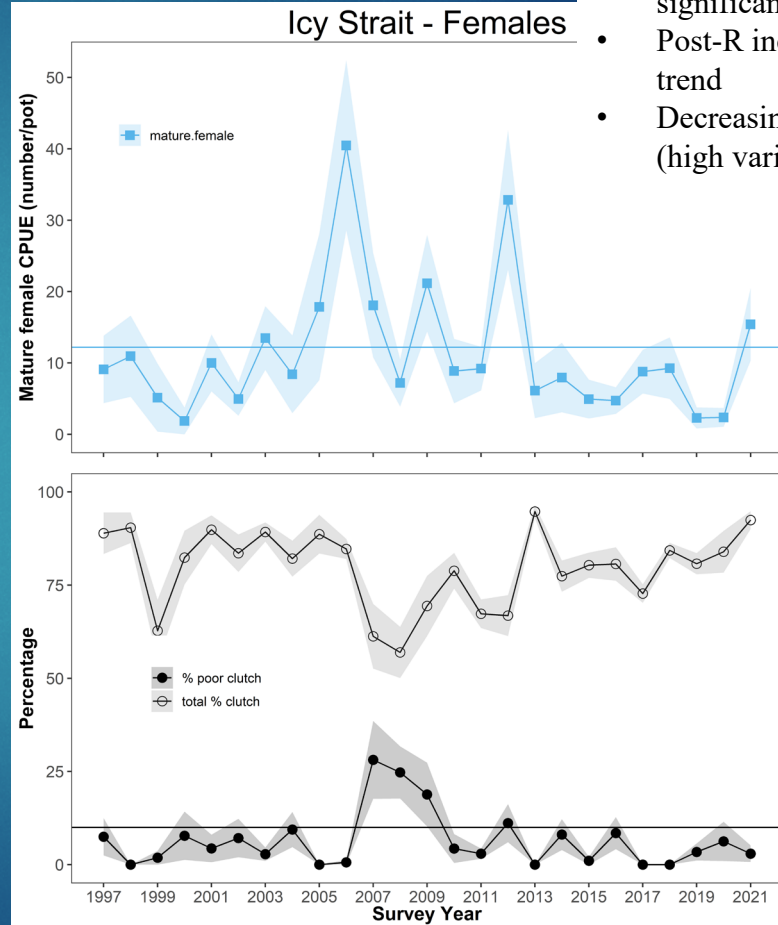
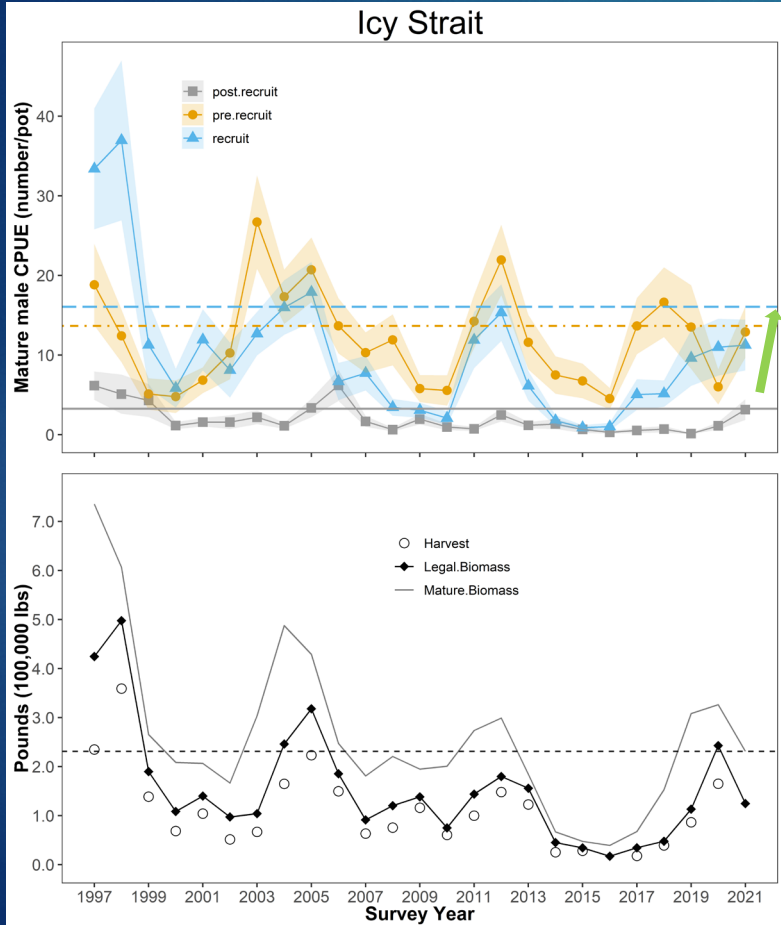
Bay by Bay Review

...



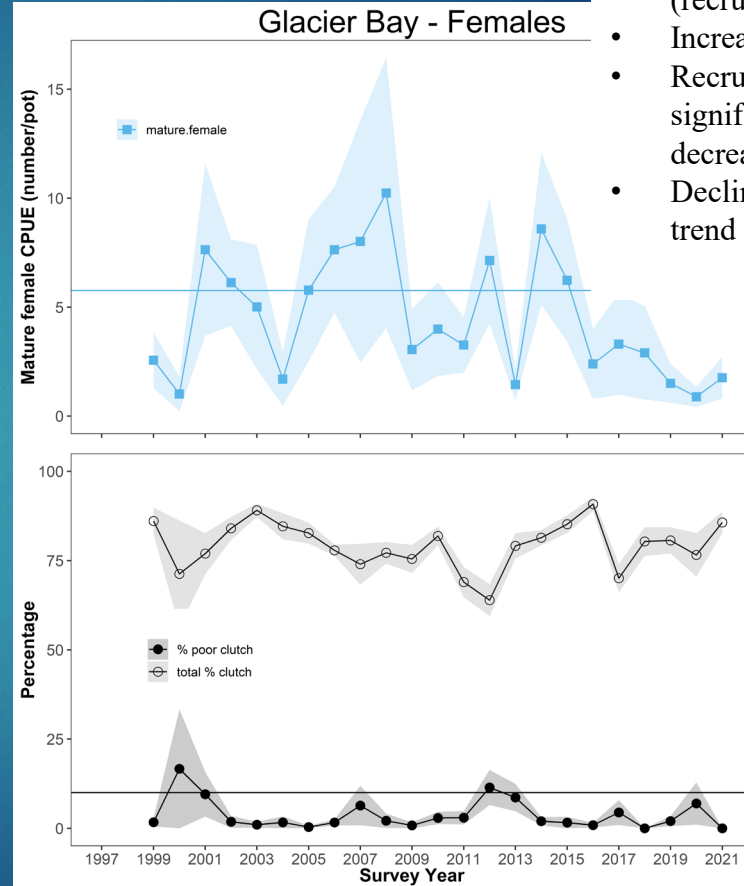
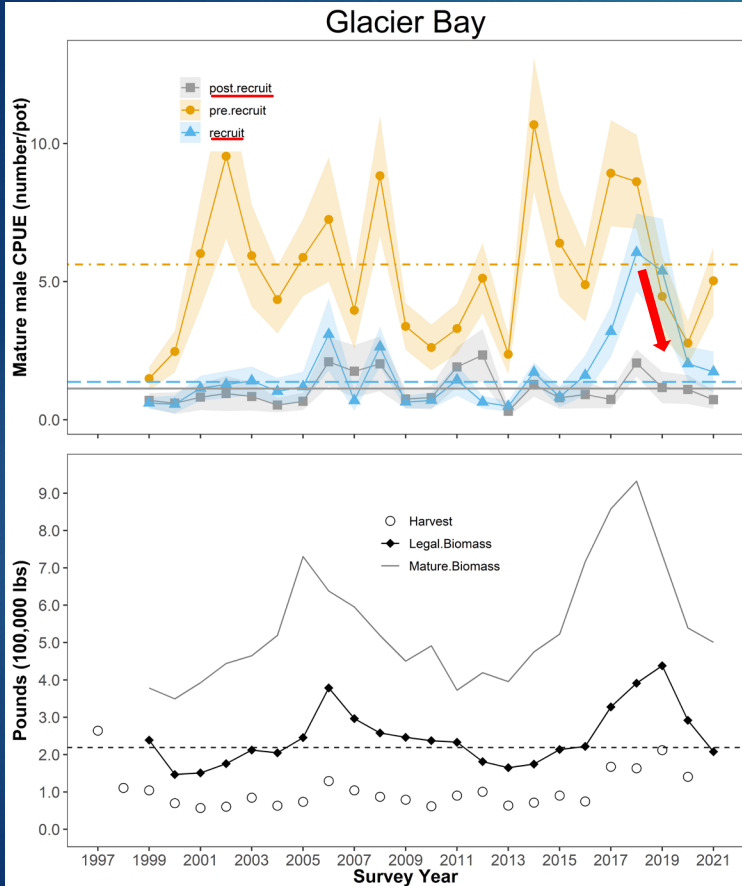
Icy Strait

- Above average health
- Increasing CPUEs (not significantly)
- Post-R increasing ST trend
- Decreasing biomass? (high variability)



Glacier Bay

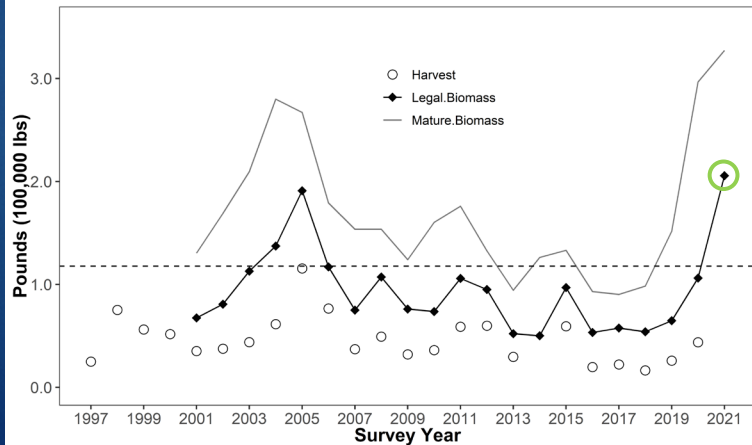
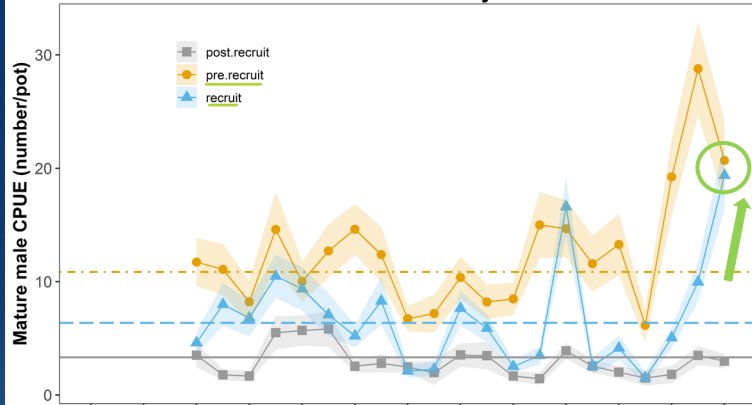
- Moderate stock health
- Declining CPUEs (recruit, post-r)
- Increase pre-r CPUE
- Recruit & post-r significant ST decreasing trend
- Declining biomass trend



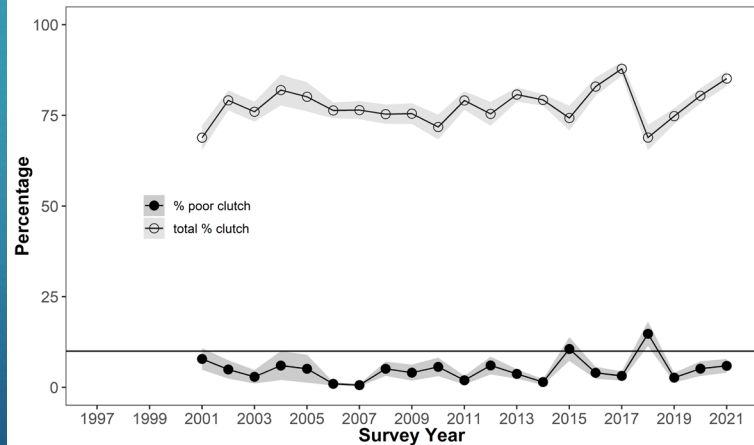
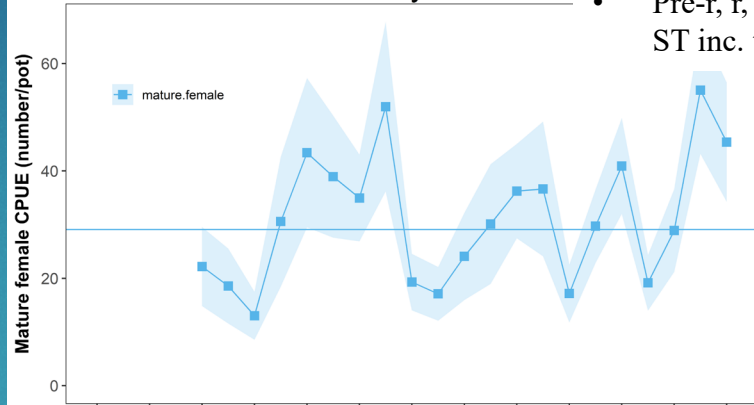
Thomas Bay

- Healthy stock status
- Pre-r & r significantly above LT
- Pre-r, r, mature female ST inc. trends

Thomas Bay



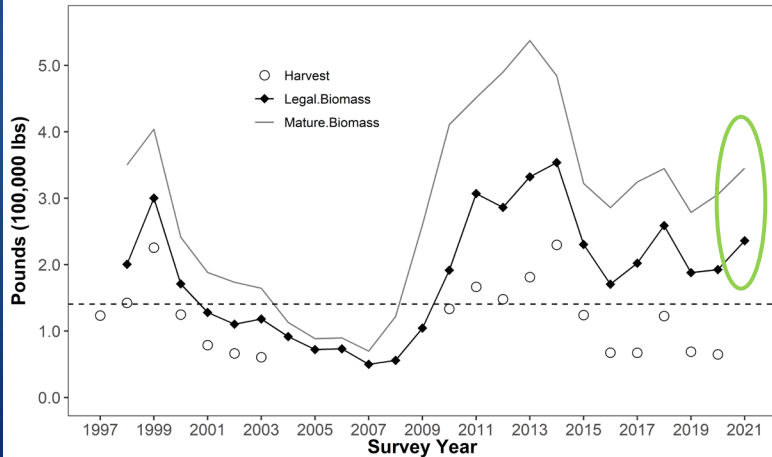
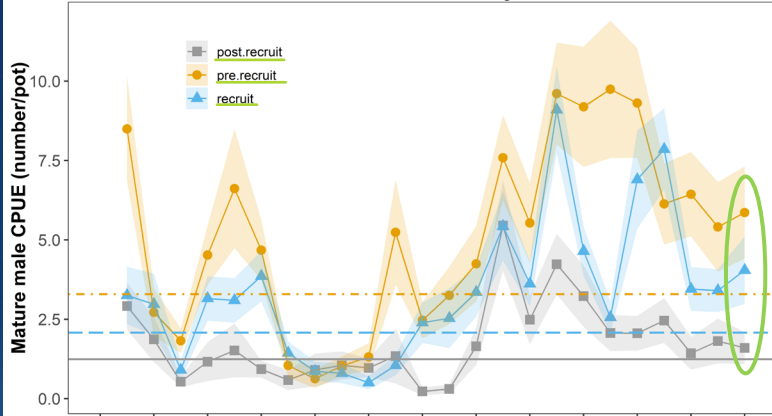
Thomas Bay - Females



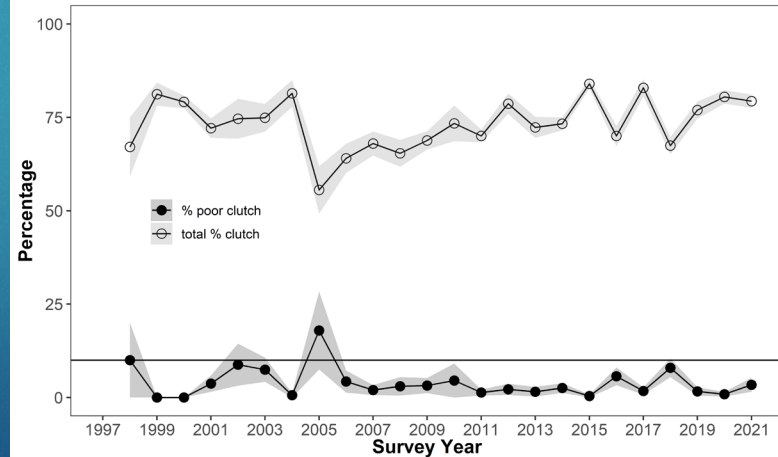
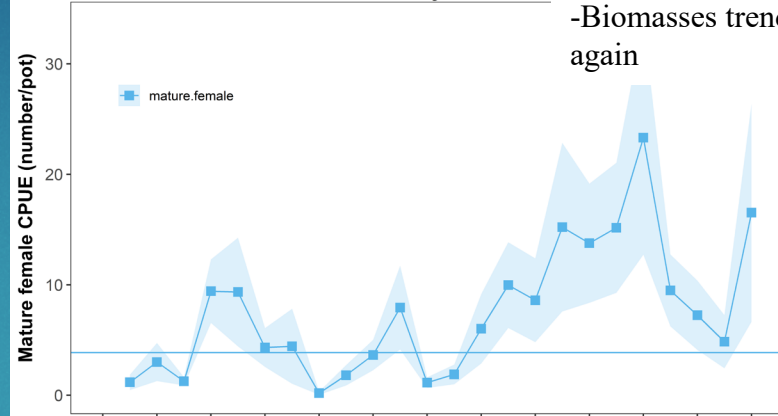
Holkham Bay

- Above average health
- All CPUEs at or above baseline (not sig.)
- Biomasses trending up again

Holkham Bay



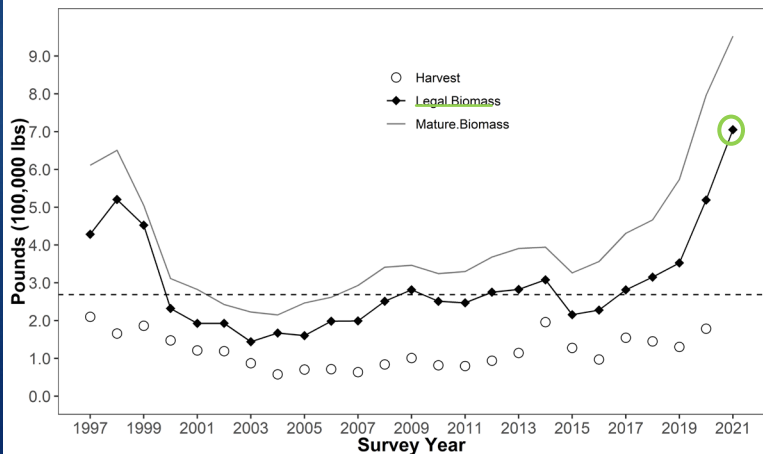
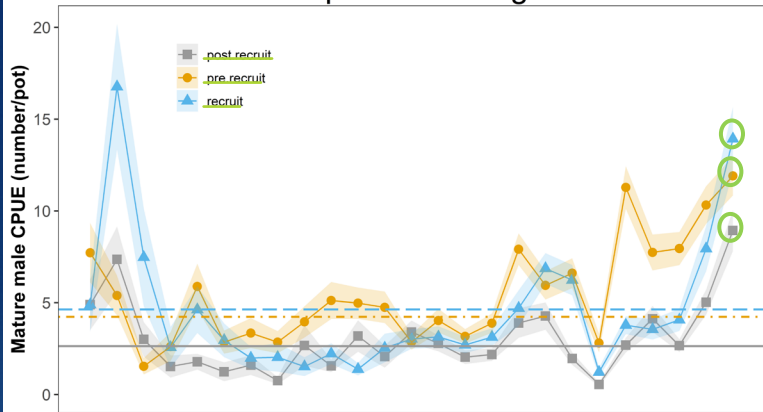
Holkham Bay - Female



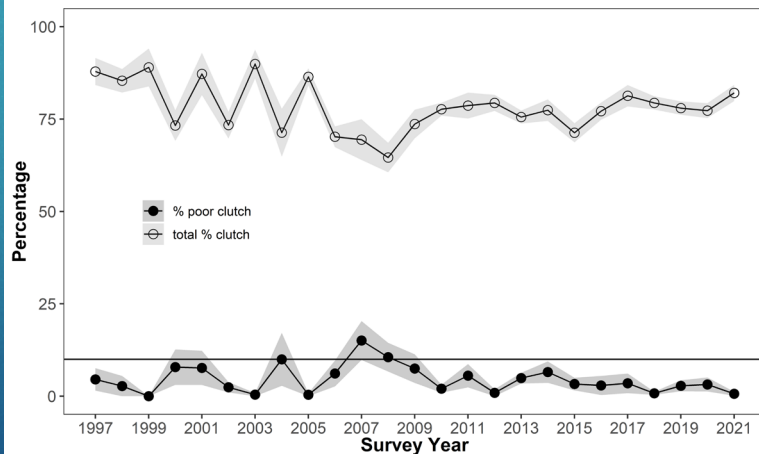
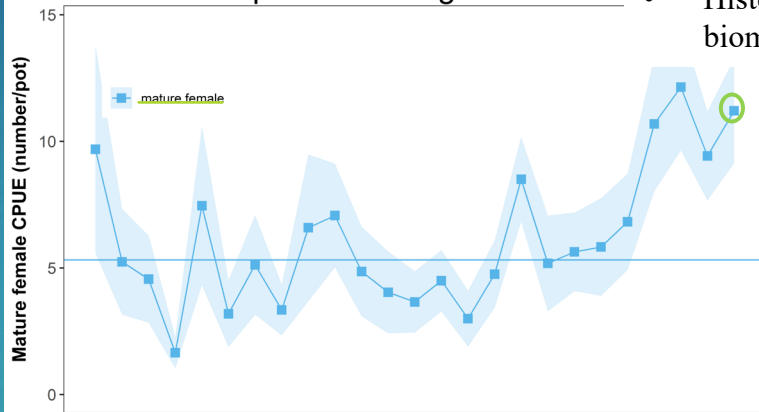
Stephens Passage

- Healthy stock status
- All CPUEs sig above baseline
- Historic highs in biomass

Stephens Passage



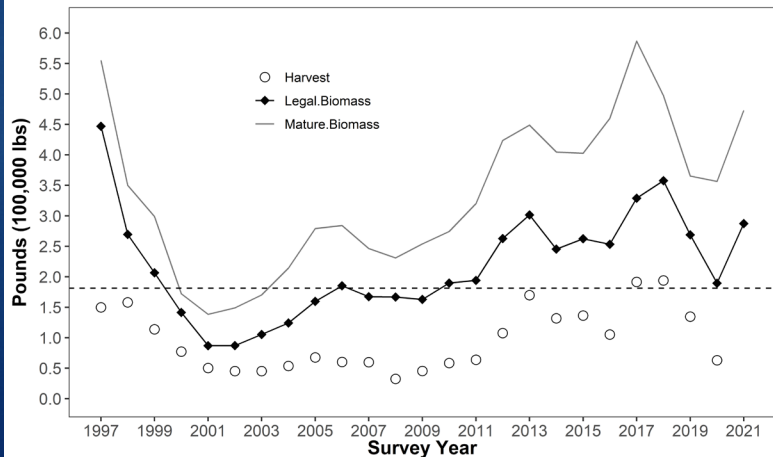
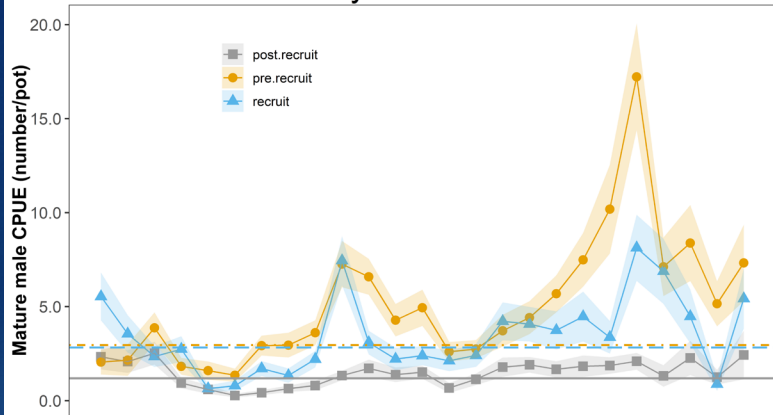
Stephens Passage - Females



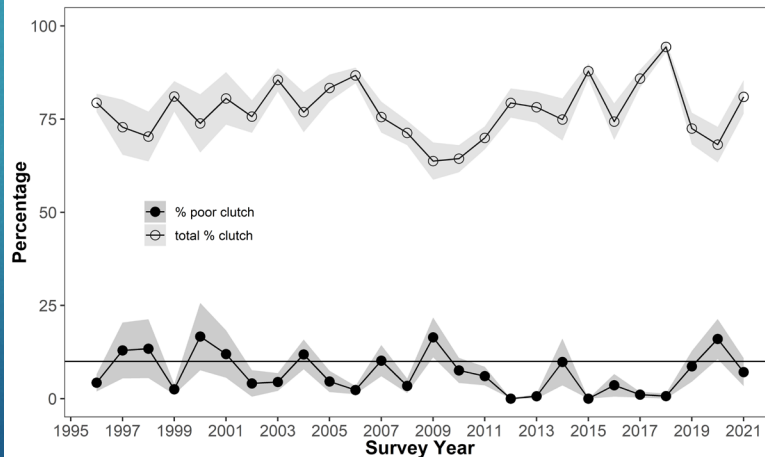
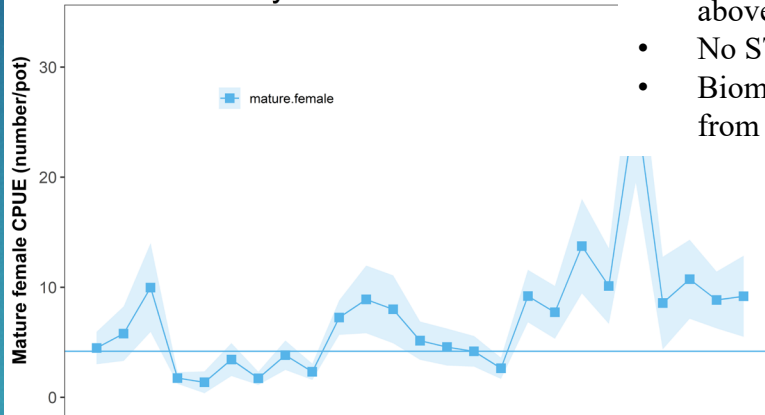
Seymour Canal

- Moderate health
- All sex/size classes near LT avg, pre-r sig above
- No ST trends
- Biomass rebounded from previous year

Seymour Canal

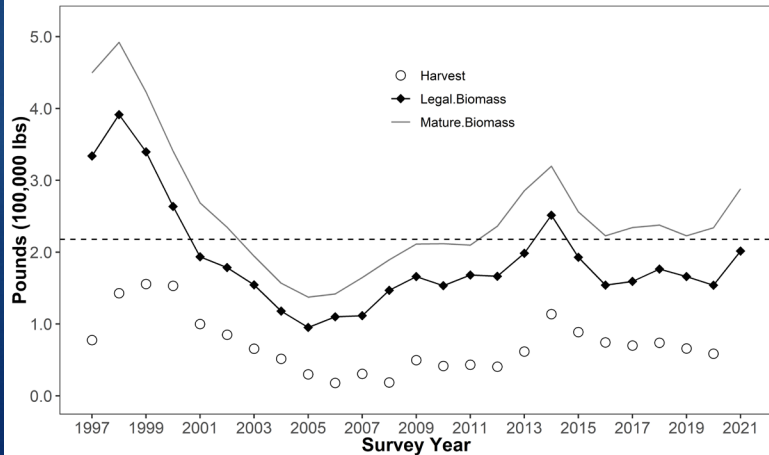
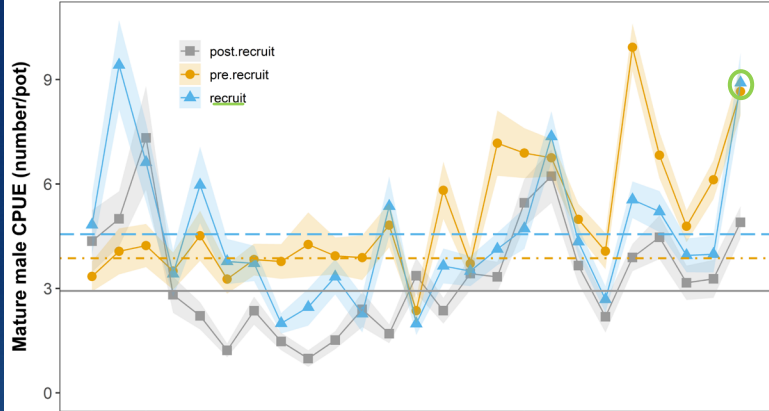


Seymour Canal - Females

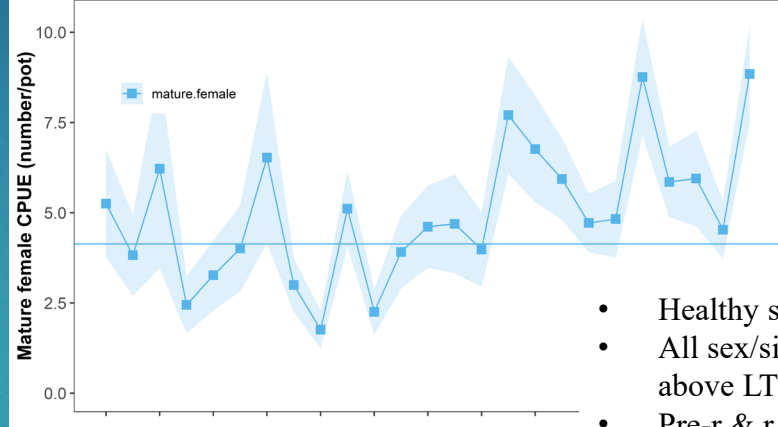


North Juneau

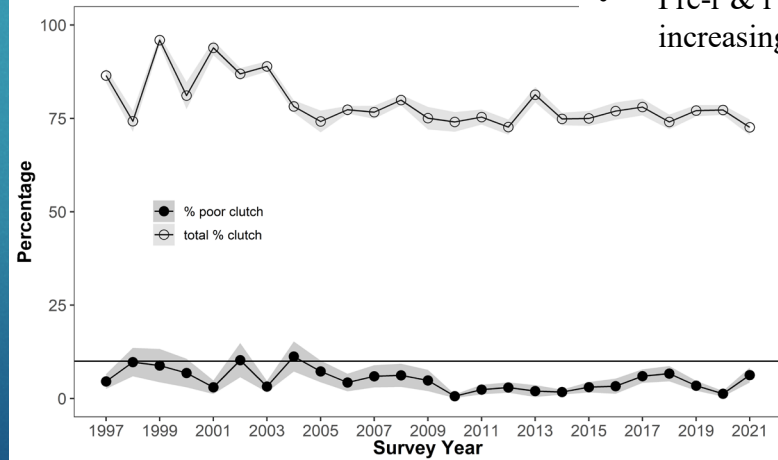
North Juneau



North Juneau - Females



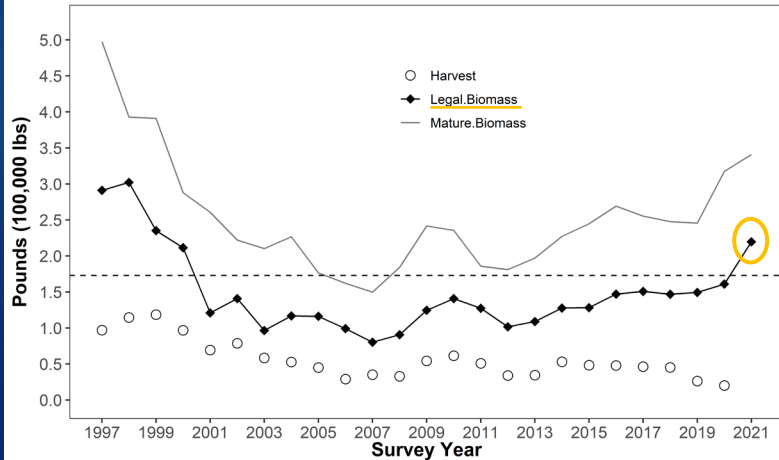
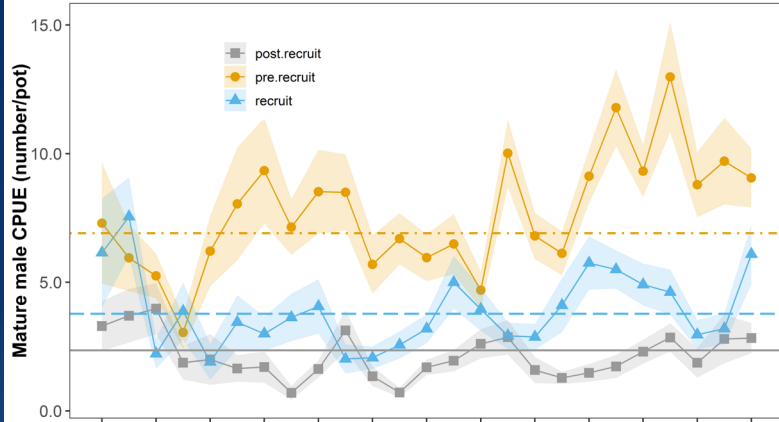
- Healthy stock status
- All sex/size classes sig above LT avg
- Pre-r & r CPUE sig ST increasing trends



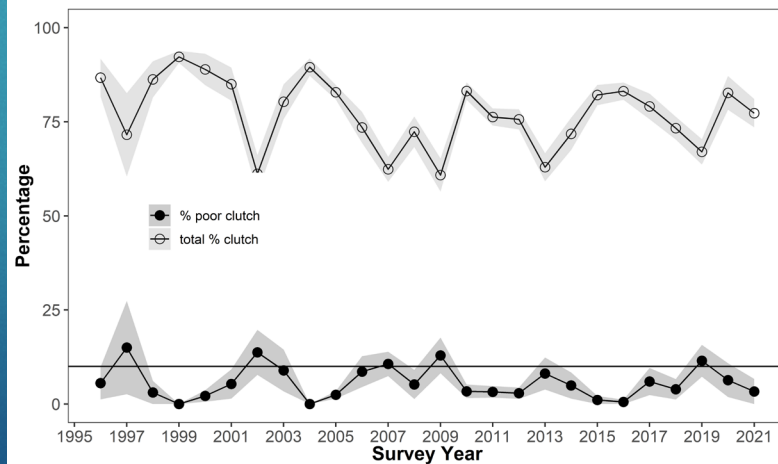
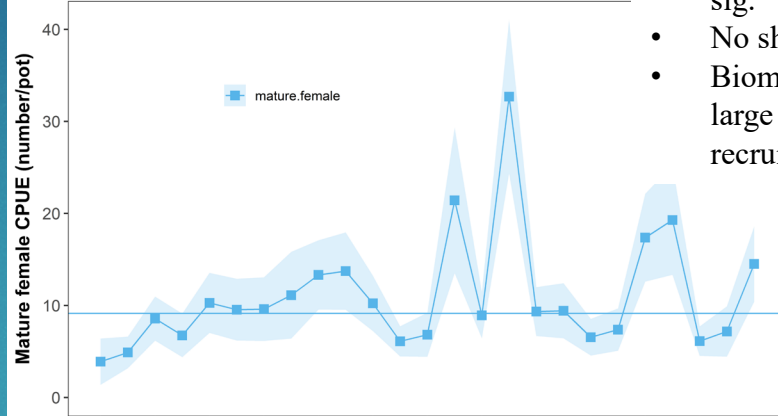
Excursion Inlet

- Moderate stock status
- All sex/size classes at or above LT but not sig.
- No short term trends
- Biomasses increasing, large increase in recruits

Excursion Inlet

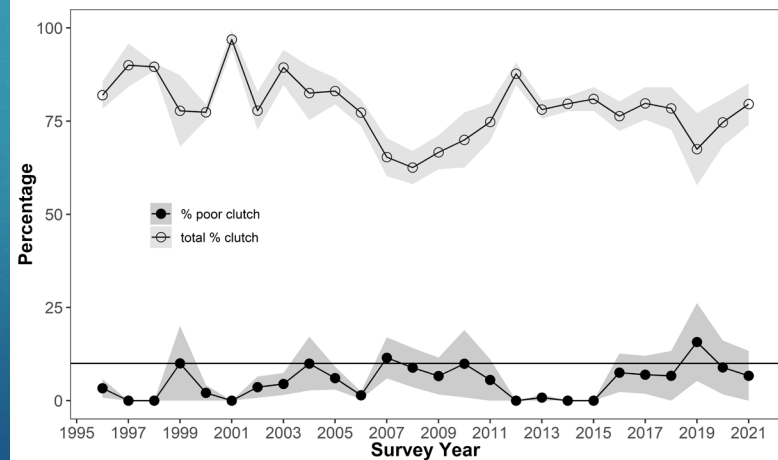
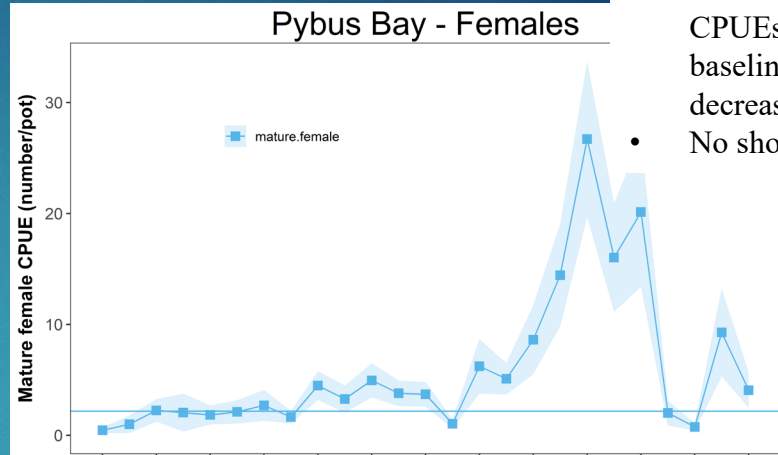
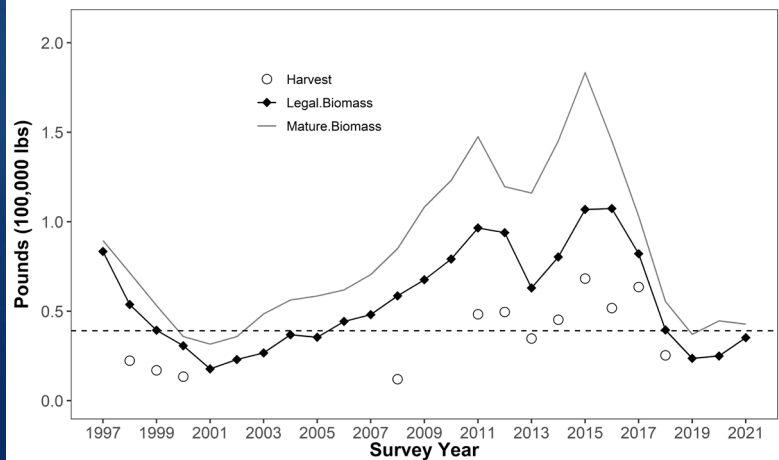
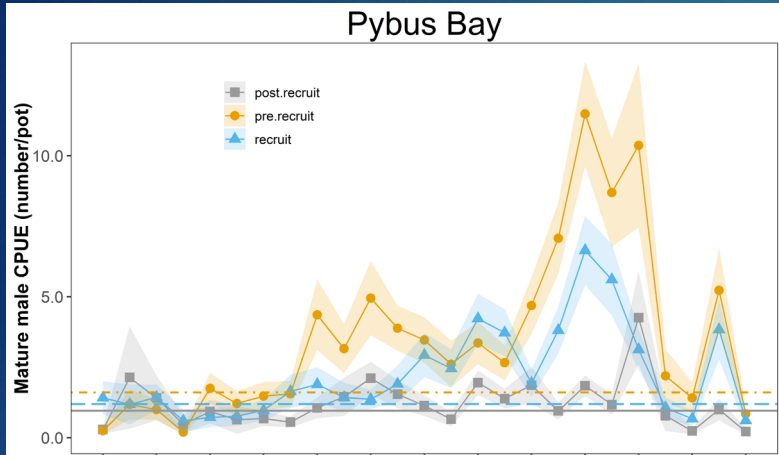


Excursion Inlet - Females



Pybus Bay

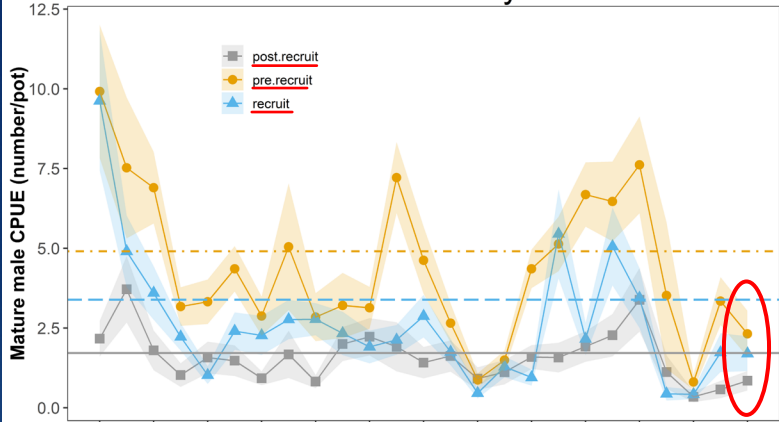
- Below average stock status
- All mature male CPUEs sig below LT baseline (large decrease from 2020)
- No short term trends



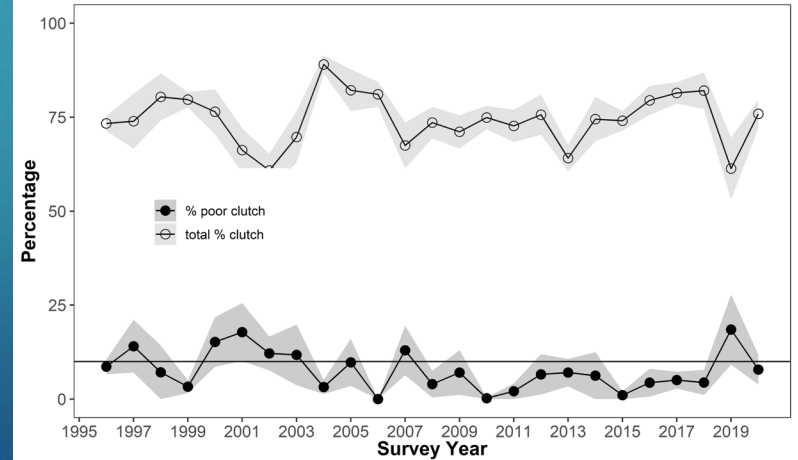
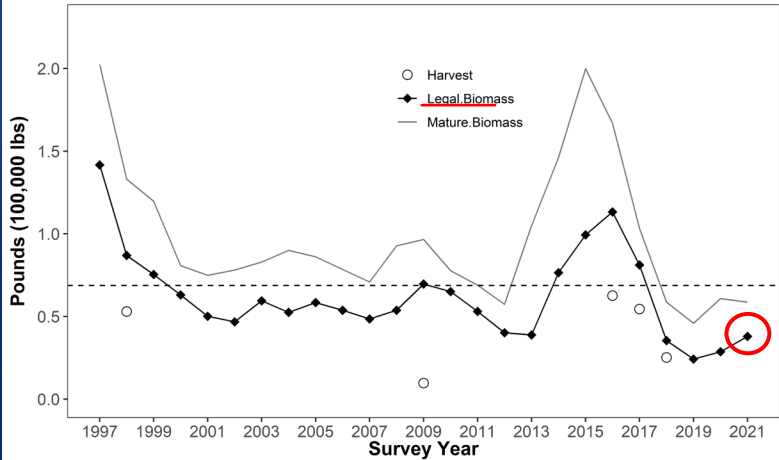
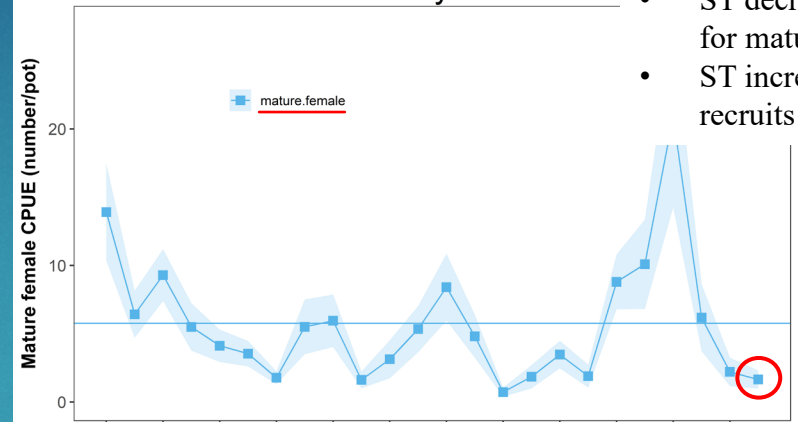
Gambier Bay

- Poor stock status
- All sex/size classes sig below LT baseline
- ST decreasing trend for mature females
- ST increasing trend in recruits

Gambier Bay

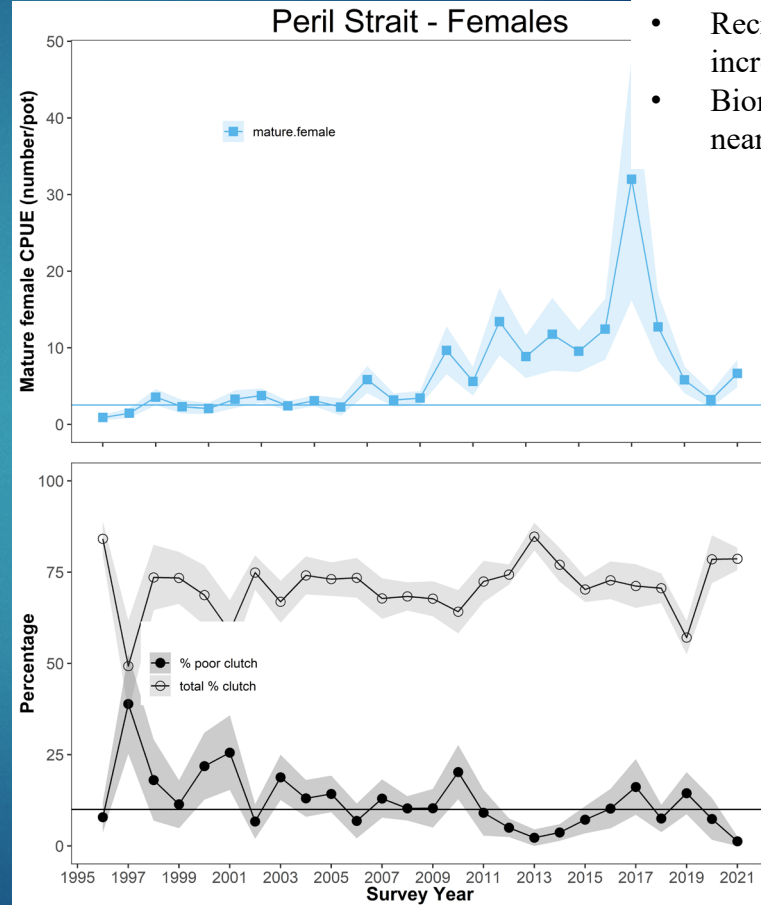
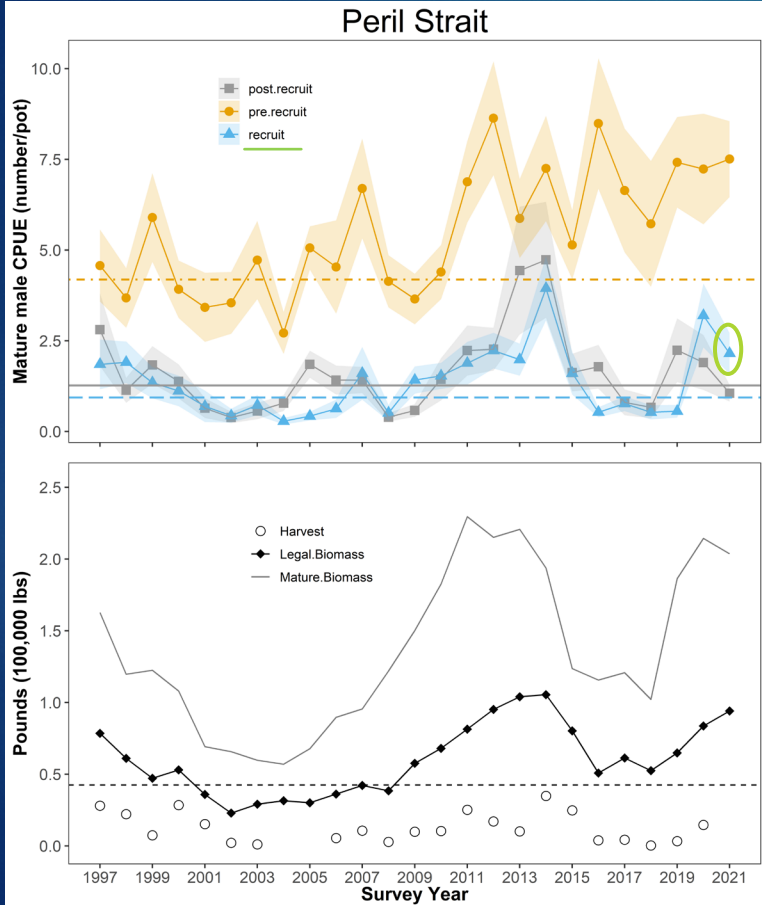


Gambier Bay - Females



Peril Strait

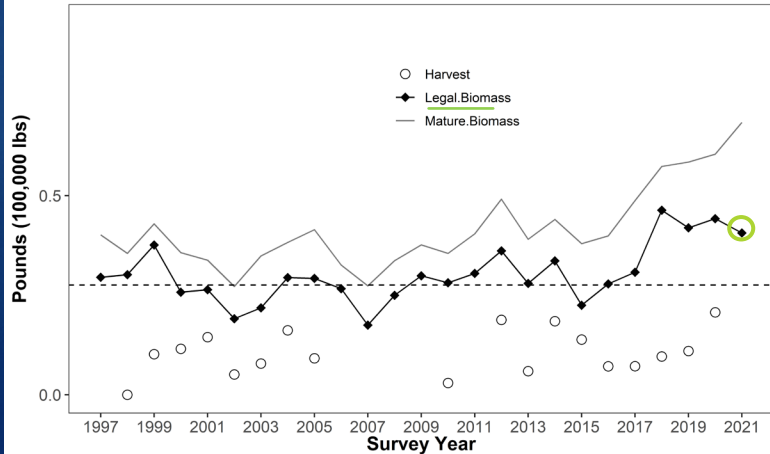
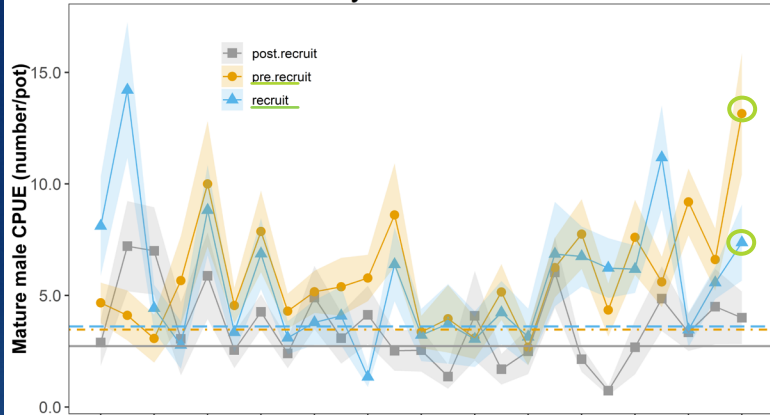
- Healthy stock status
- Pre-r & r sig above LT baseline
- Recruit sig. ST increasing trend
- Biomasses increasing, near highest levels



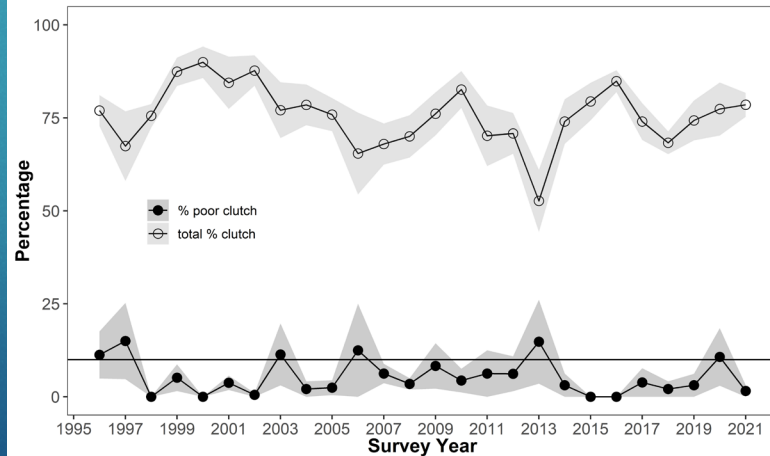
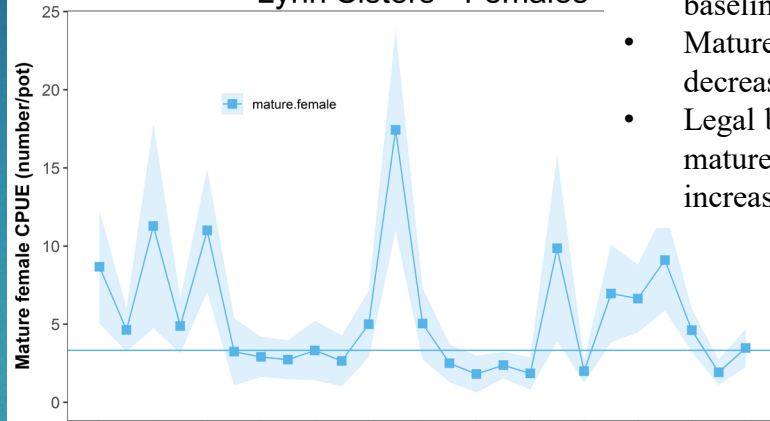
Lynn Sisters

- Above average stock status
- Pre-r & r sig above LT baseline
- Mature female sig ST decreasing trend
- Legal biomass stable, mature biomass increasing

Lynn Sisters



Lynn Sisters - Females

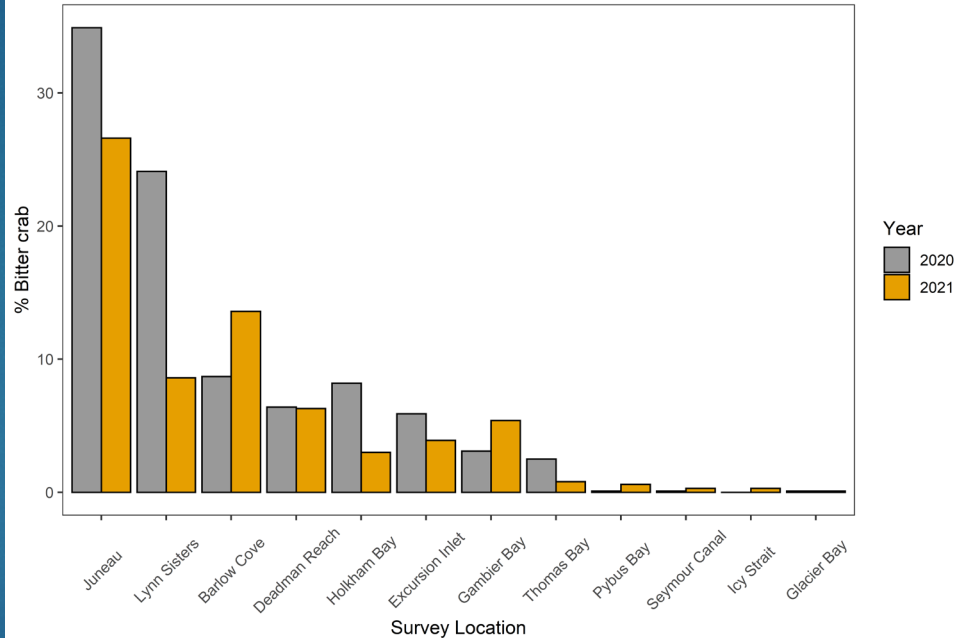


Bitter Crab

Survey

Location	% Bitter 2020	% Bitter 2021
Juneau	34.9	26.6
Lynn Sisters	24.1	8.6
Barlow Cove	8.7	13.6
Holkham Bay	8.2	3
Deadman Reach	6.4	6.3
Excursion Inlet	5.9	3.9
Gambier Bay	3.1	5.4
Thomas Bay	2.5	0.8
Glacier Bay	0.1	0.1
Pybus Bay	0.1	0.6
Seymour Canal	0.1	0.3
Icy Strait	0	0.3

Bitter crab occurrence in SE Tanner crab survey data



Fishery

Southeast Area	% Bitter 2019/21	% Bitter 2020/21
11-A	27	31
15-A	45	61
15-C & B	22	36

Thanks!

