

# Southeast Alaska Red King Crab Stock Assessment



King and Tanner Task Force Mtg.  
December 14, 2022

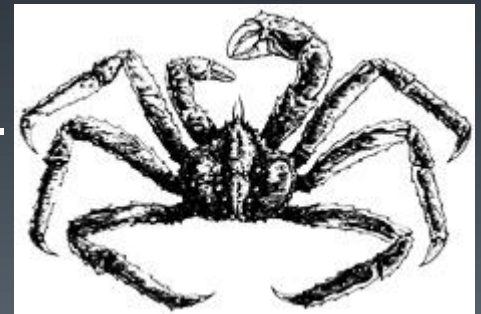


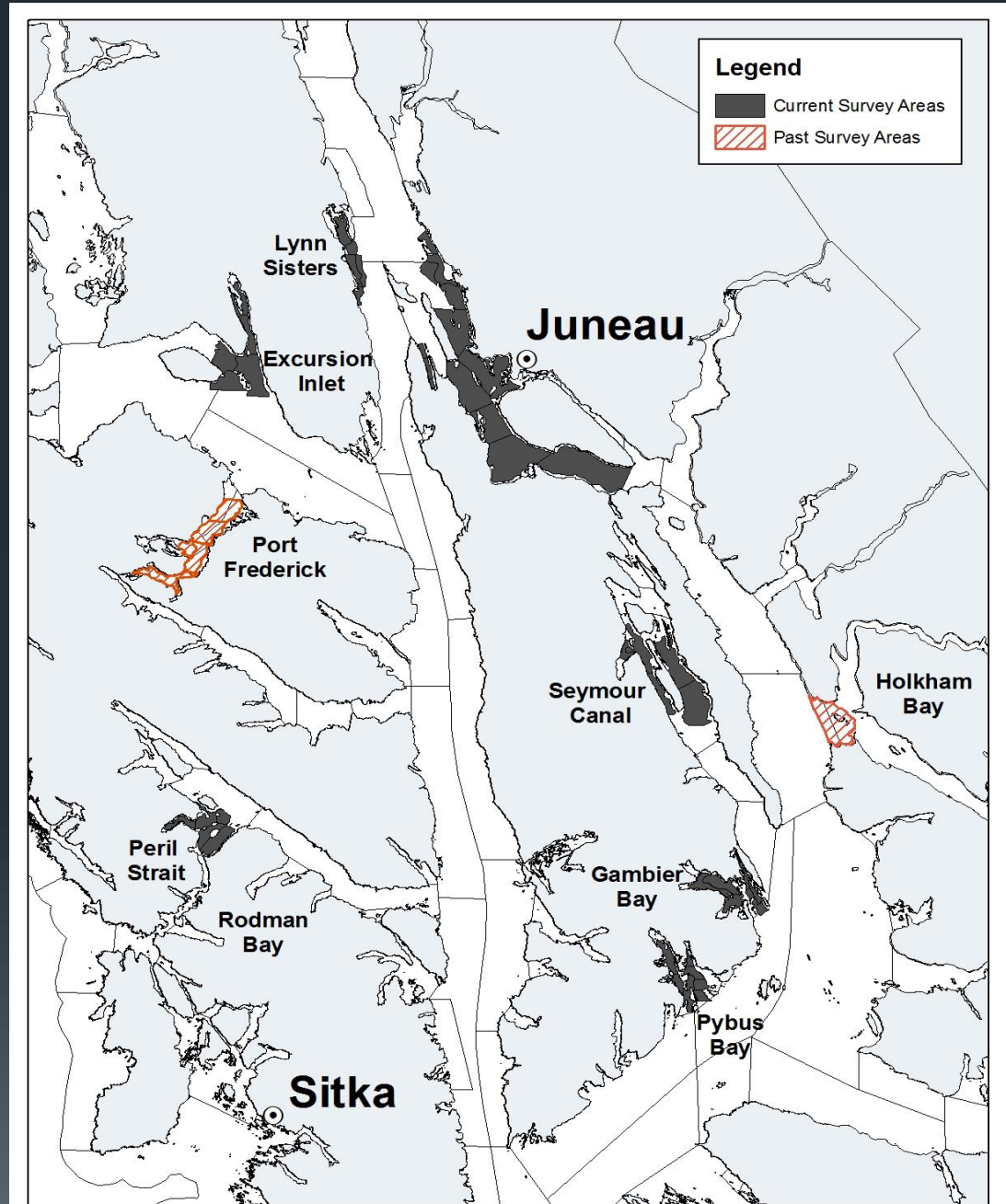
Image: northpacificseafoods.com

# RKC Assessment / Management

- Assessment
  - 7 areas surveyed with ~572 pot lifts (47 pots added for 2022)
  - Biomass estimated using Catch-Survey Analysis (CSA) model
- Management plan
  - Season November 1 – January 24
  - Appropriate harvest rate
  - Regional GHL set using survey biomass
  - Pot limits based on GHL
  - Minimum GHL threshold of 200,000 lbs legal crab
  - Mark/Recapture expansion factor incorporated into biomass estimate
  - Males only, 7-inch minimum CW

# Southeast Alaska

## Major Commercial Red King Crab Fishing Grounds



# Tagging Project:

4

- Collect growth and movement.
- Tag is retained though the molt, placed in the isthmus muscle.
- Juveniles greater than 112mm; pre-recruits; and legal crab were tagged.
- Initial tagging done in two bays: Seymour Canal and Excursion Inlet.

Seymour crab tagged: 2019 -- 134

2020 – 42

2021– 1

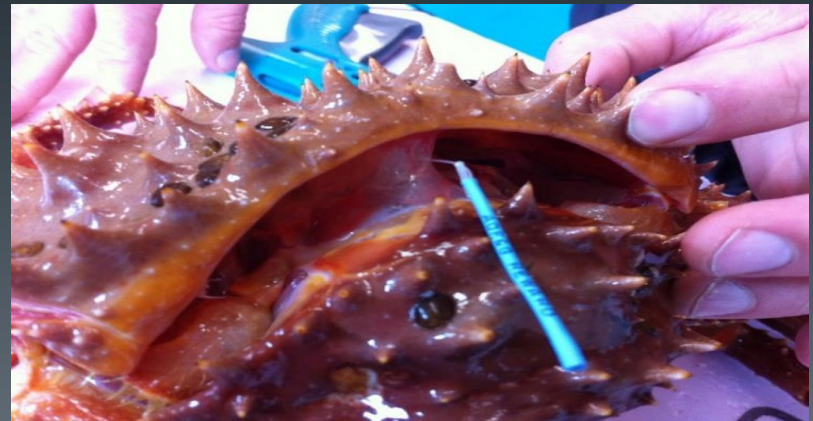
Excursion crab tagged: 2019 -- 401

2020 – 242; 9 recaptures

2021– 154; 7 recaptures

The average growth per year from the recaptures is **14** millimeters.

(3 skip molted and showed no growth)



# Expanded tagging in 2022:

5

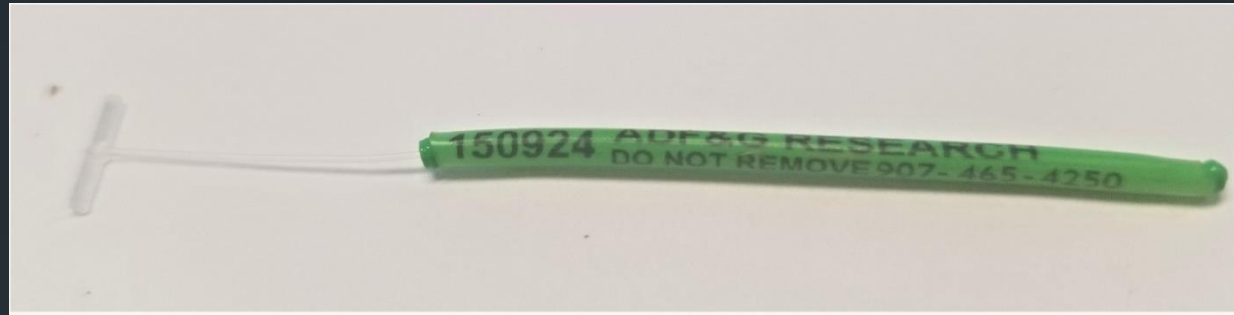
Excursion inlet: **51** tagged; 2 recaptures

Seymour: **92** tagged

Pybus: **89** tagged

Peril: **134** tagged

Gambier: **148** tagged



**Total: 514**

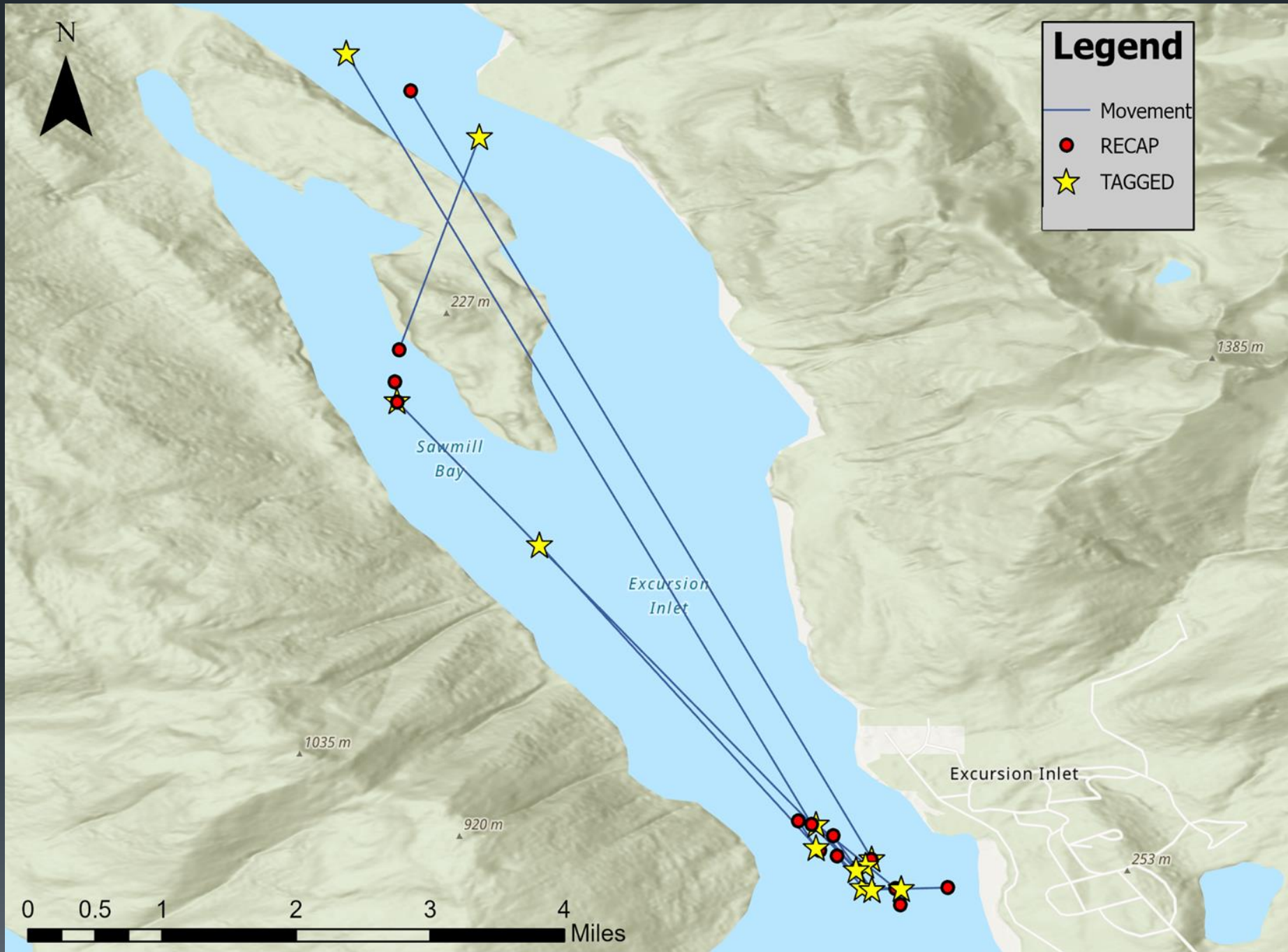
The department will continue to tag opportunistically on the survey.

If you catch a crab with a tag.:

Release, if not legal.

Record Lat. Long. and tag # if you can.

There are **No Rewards**.



# PU King Crab Permits (outside 11-A)

- New permit system put into place 7/1/18
- Permits due June 23<sup>rd</sup>
- Statewide harvest survey from 2017: **527 crab**

Year	# of Permits	Total # of Crab
2018	2,265	1,637
2019	2,772	1,107
2020	3,410	1,211
2021	2,262	847
2022	1,327 (1,116 still open)	166

- Catch by species; 22 BKC, 51 GKC, 5,422 RKC

# 11-A PU Harvest (#s of Crab)

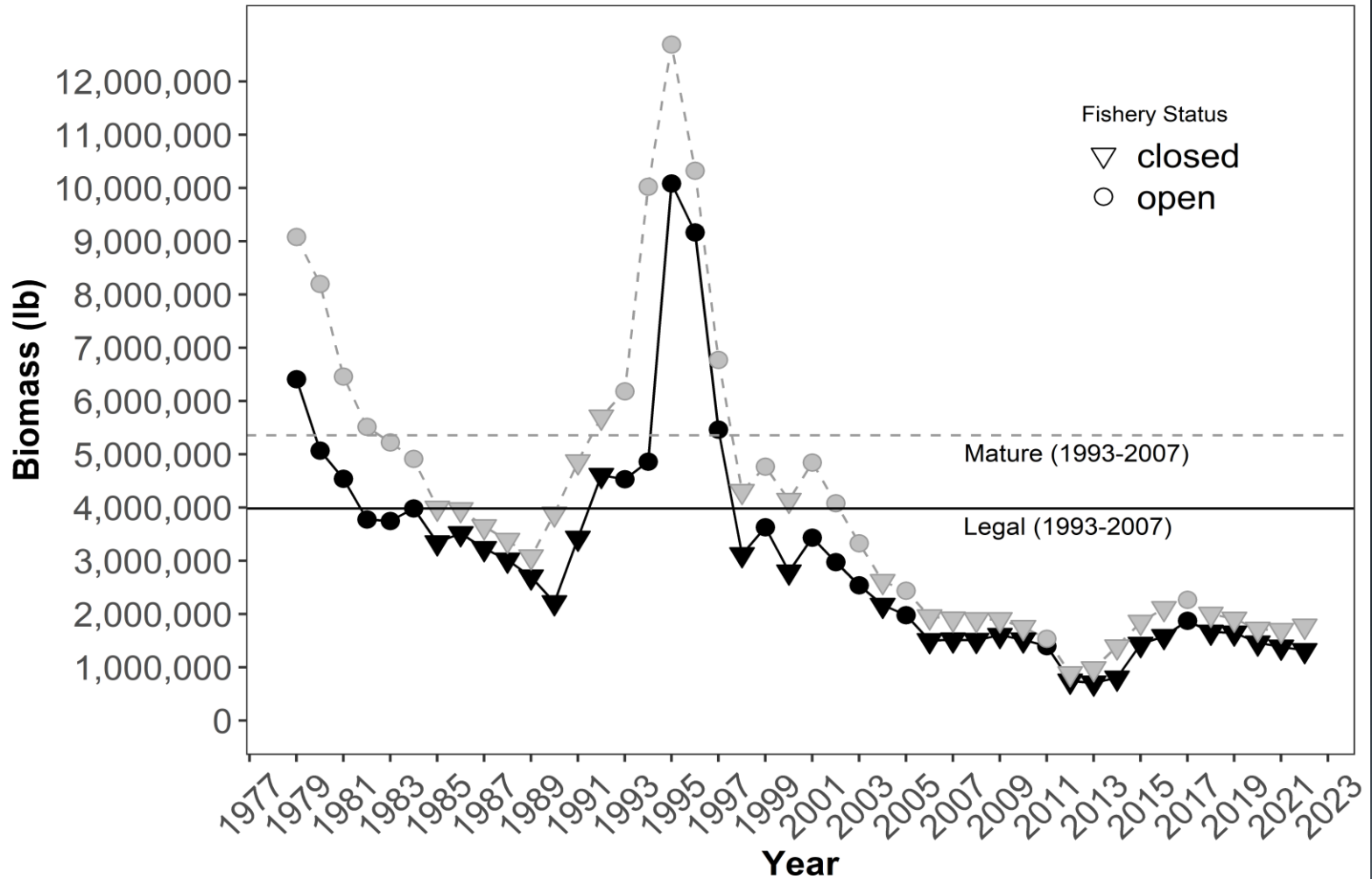


Season	Commercial fishery		Summer personal use fishery		Winter personal use fishery		Total allowable harvest	
	Allocation	Harvest	Allocation	Harvest	Allocation	Harvest	Target	Harvest
<b>2017/18</b>	2,410	2,516	3,012	1,663	602	1,949	6,024	6,128
<b>2018/19</b>	0	0	2,168	1,343	434	1,142	2,602	2,485
<b>2019/20</b>	0	0	1,566	1,446	313	243	1,879	1,680
<b>2020/21</b>	0	0	1,527	1,203	305	150	1,832	1,353
<b>2021/22</b>	0	0	1,601	1,182	320	52	1,921	1,234
<b>2022/23</b>	0	0	1,364	1,177	273	*	1,637	

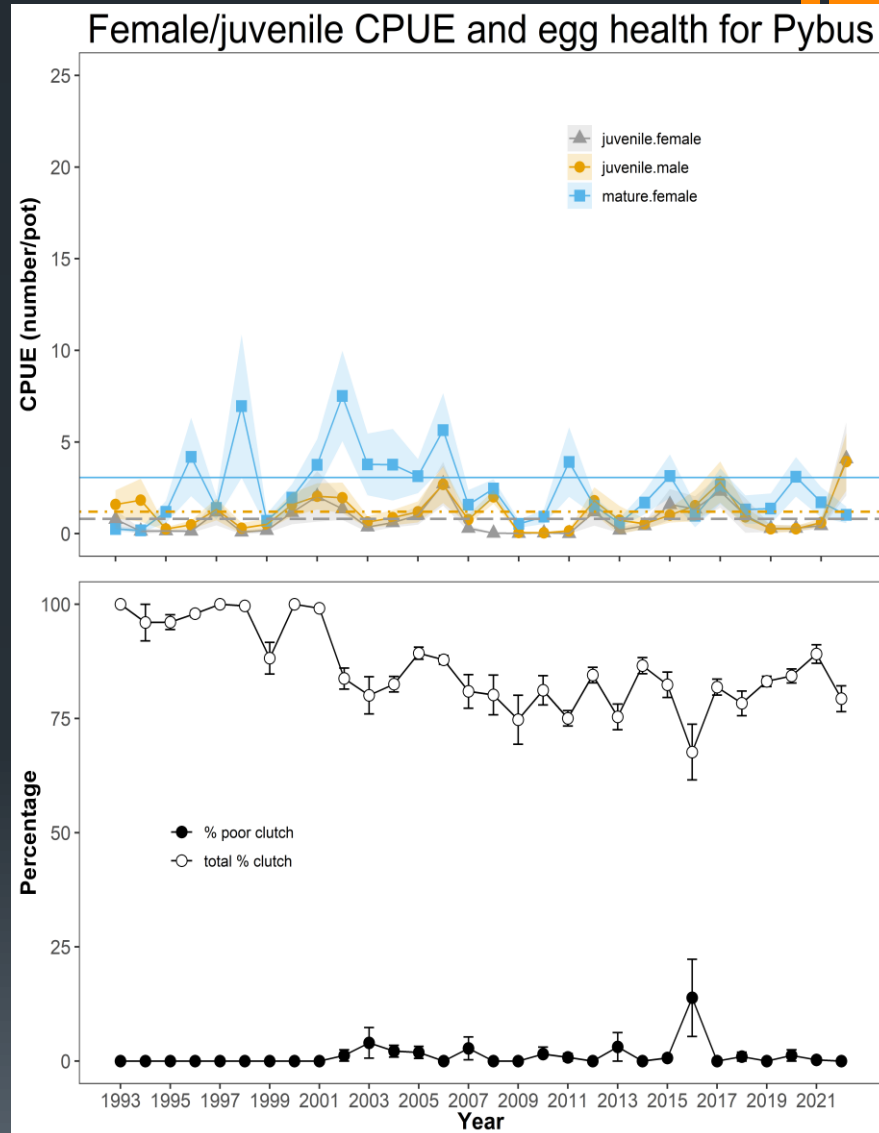
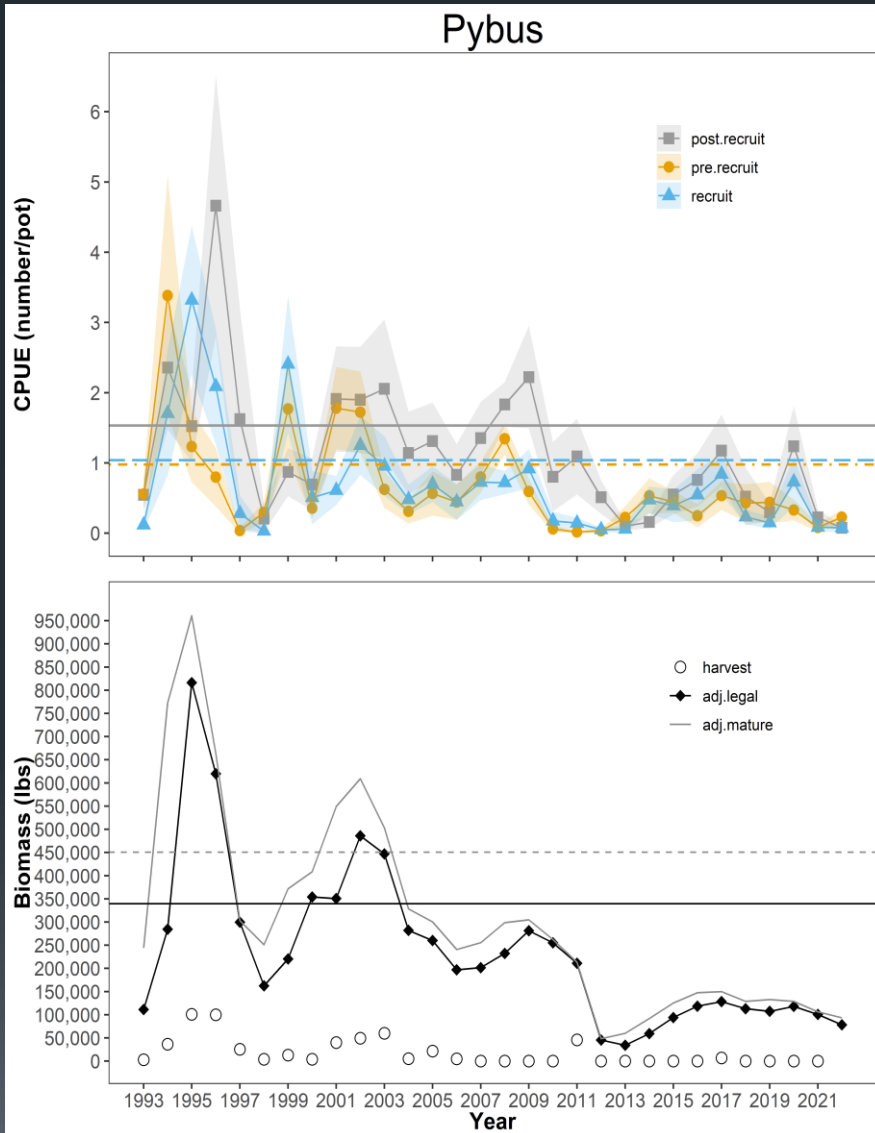
\* = Data still being gathered.



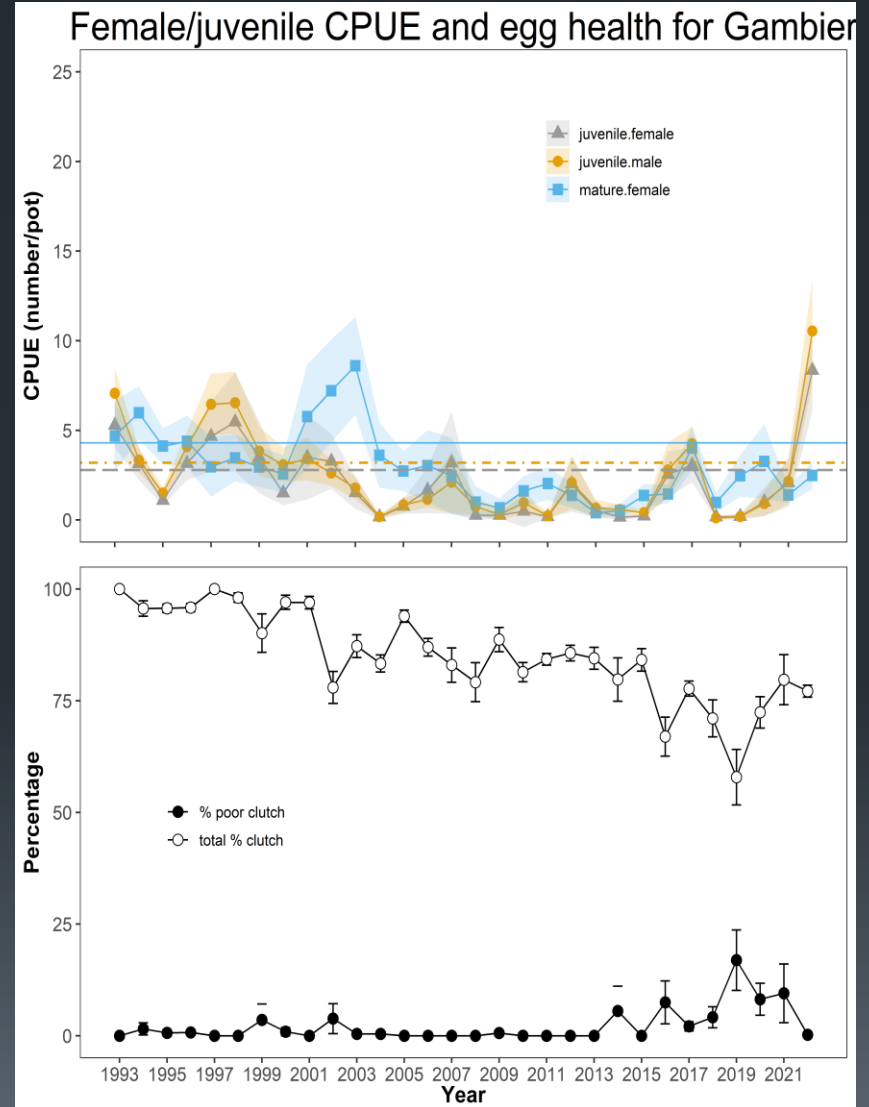
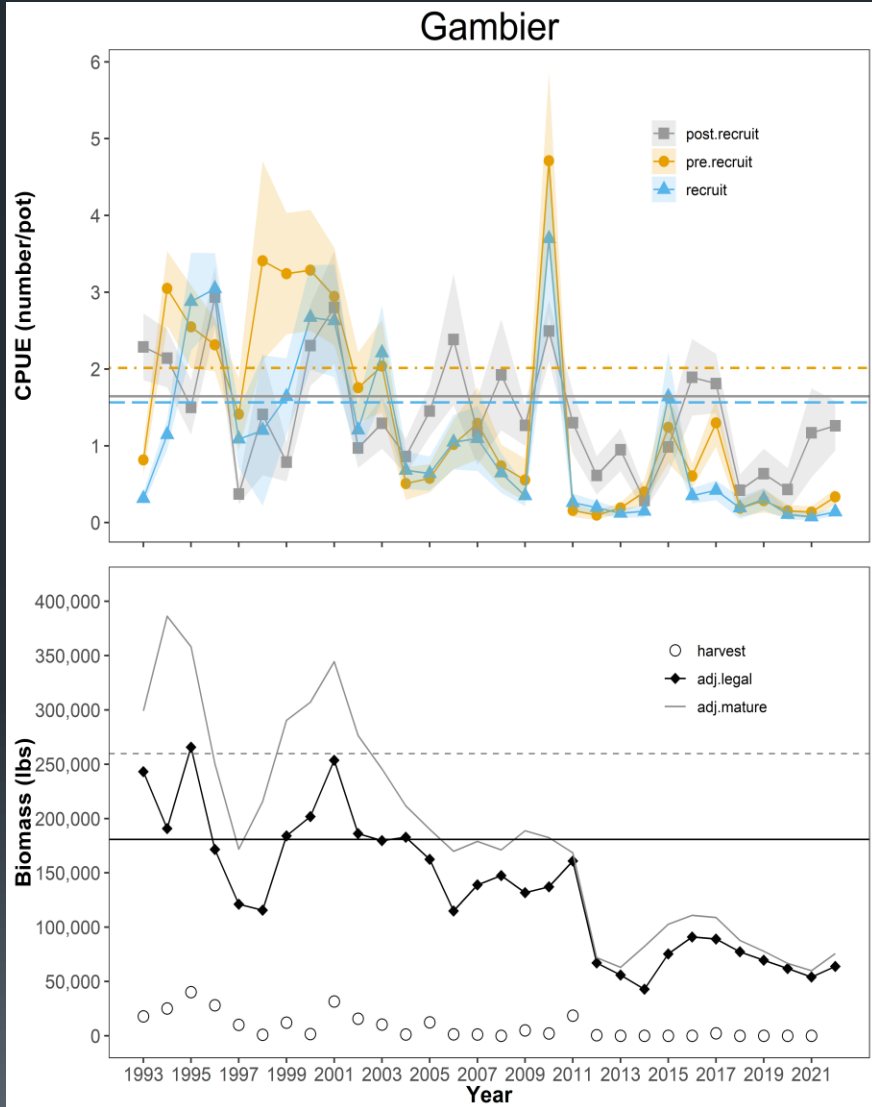
Regional biomass estimates for Southeast Alaska red king crab



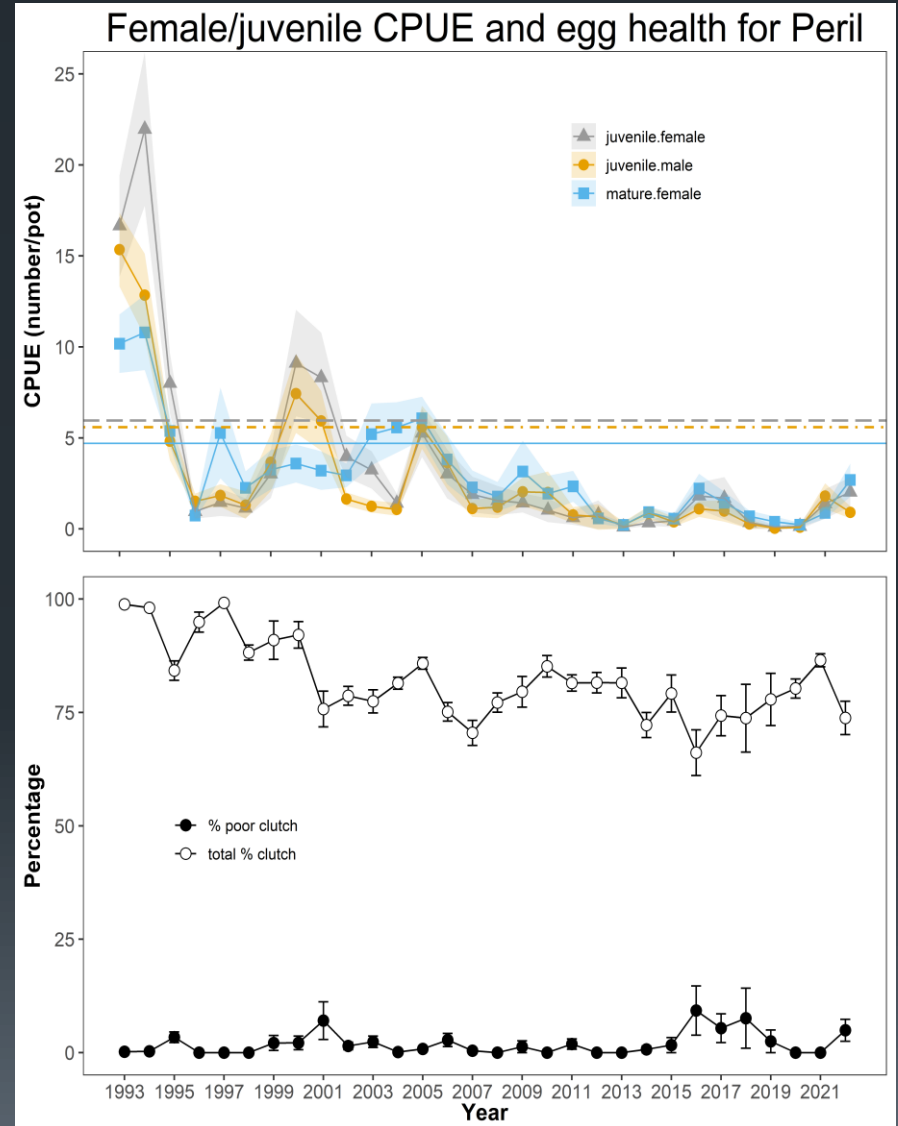
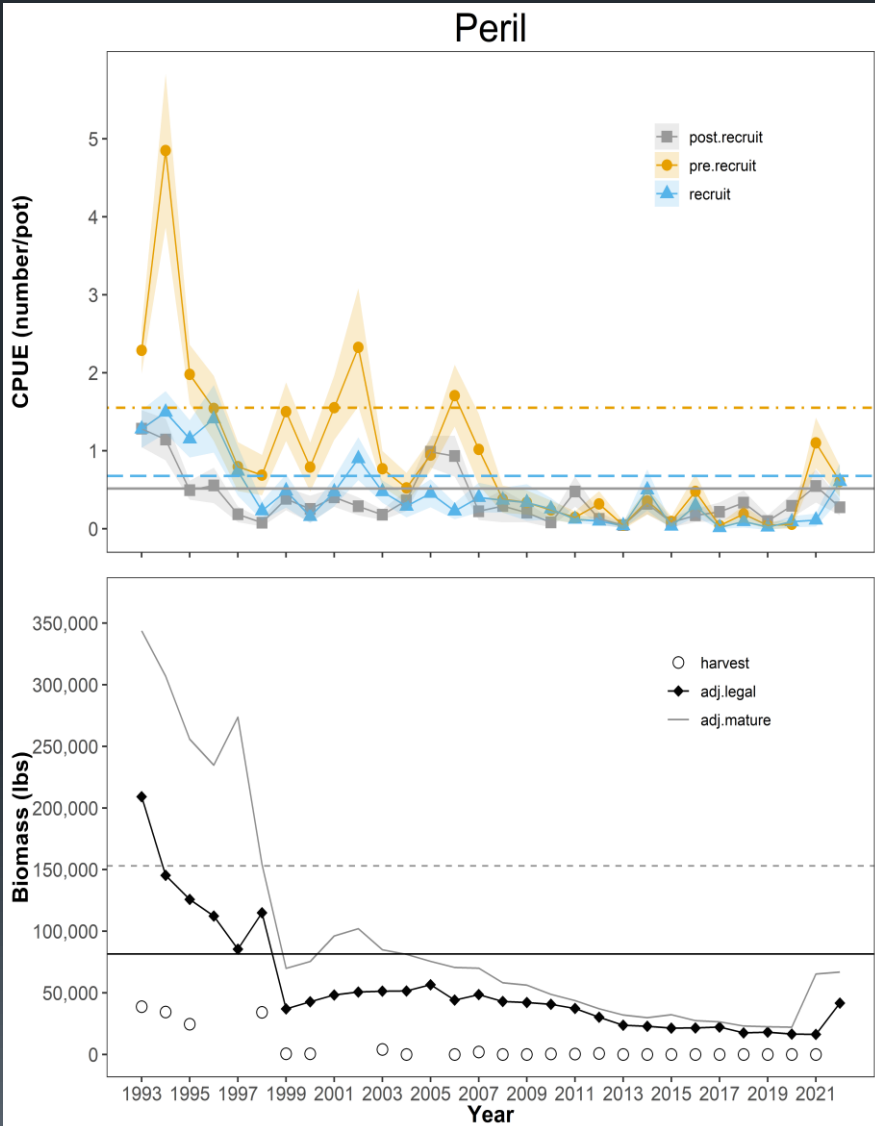
# Pybus Bay



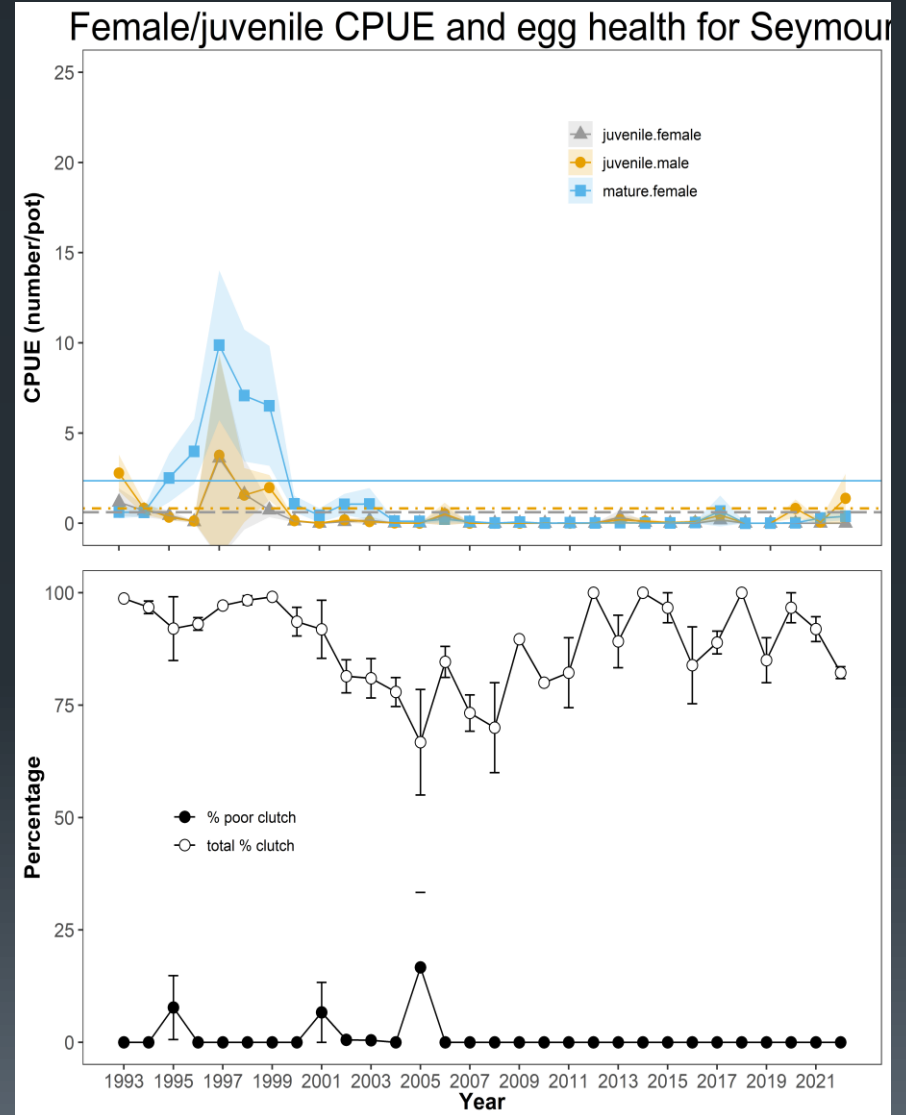
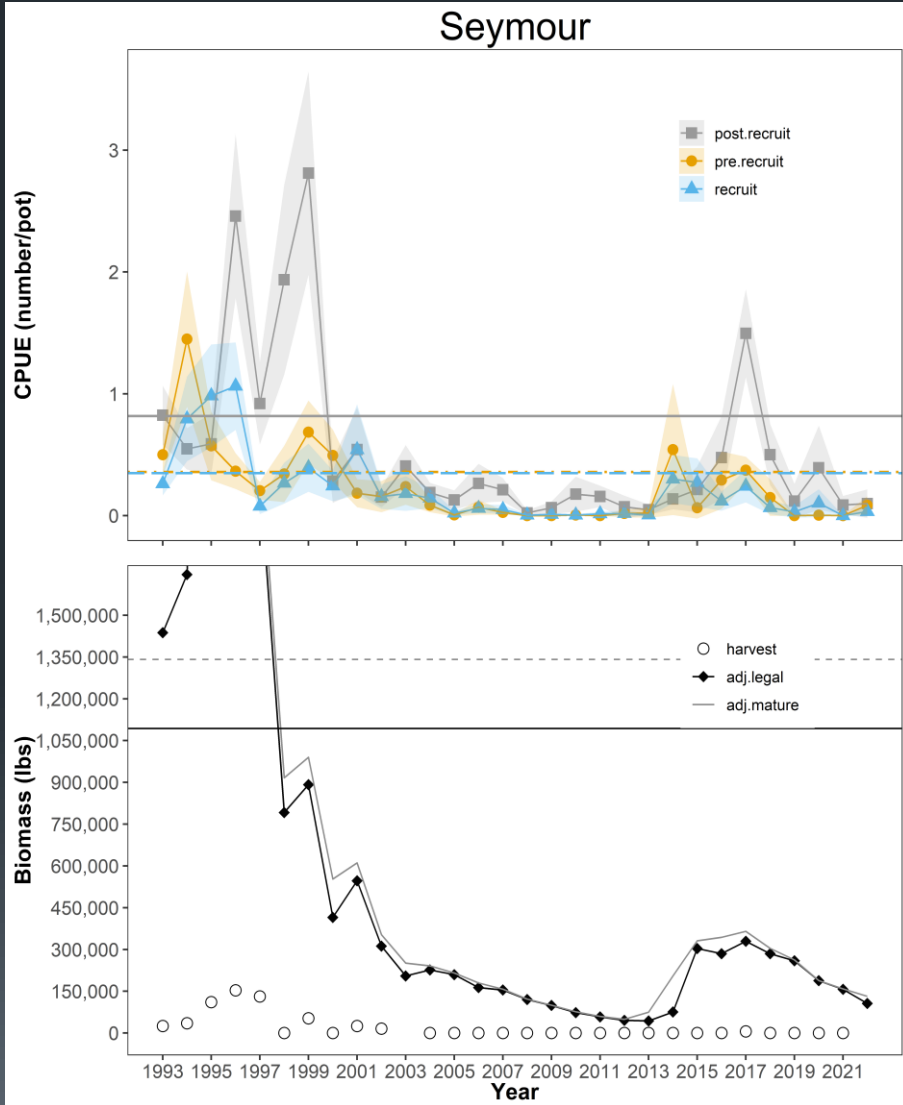
# Gambier Bay



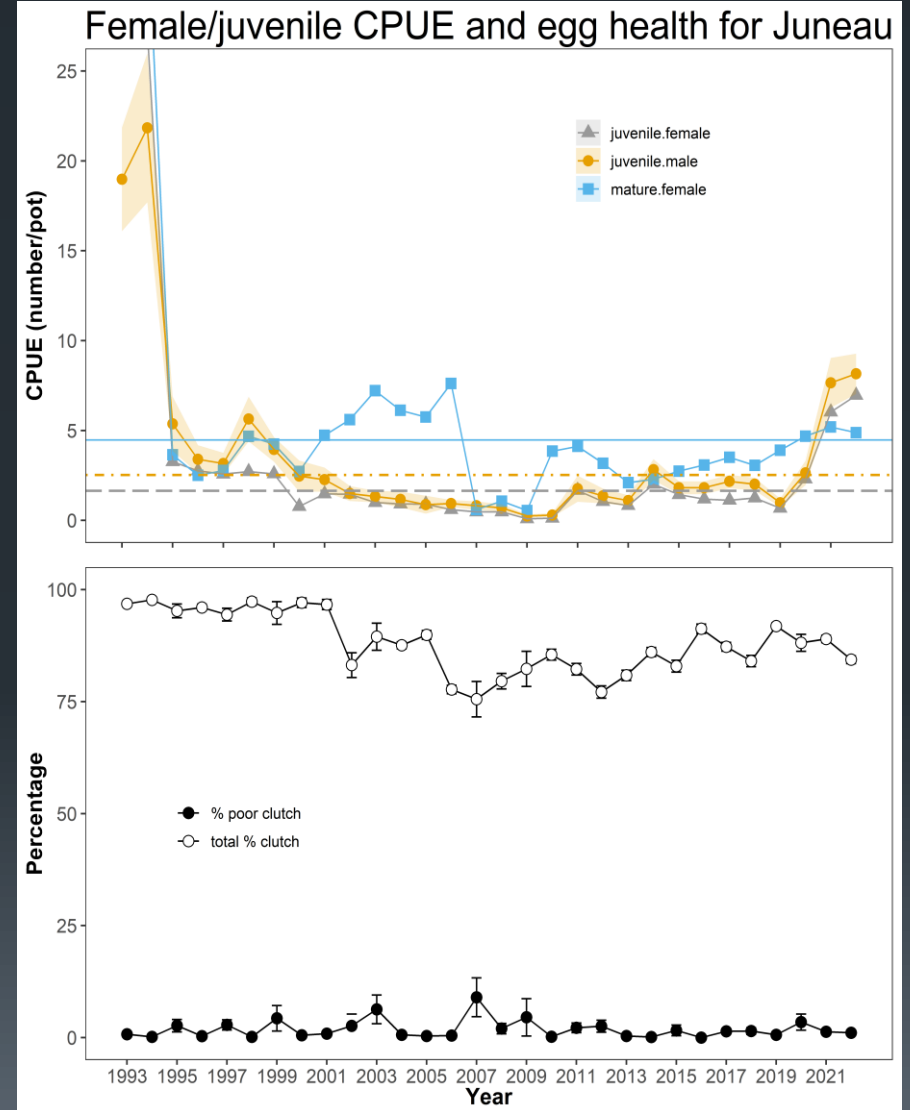
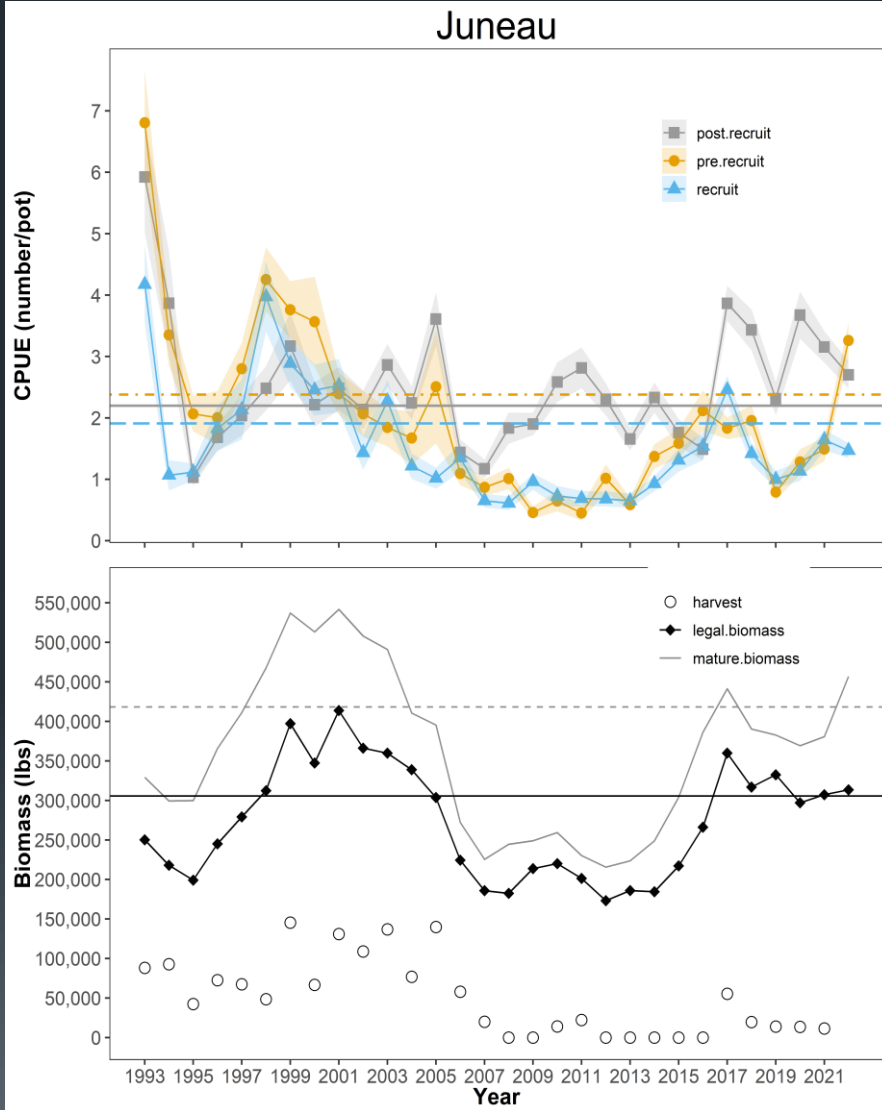
# Peril Strait



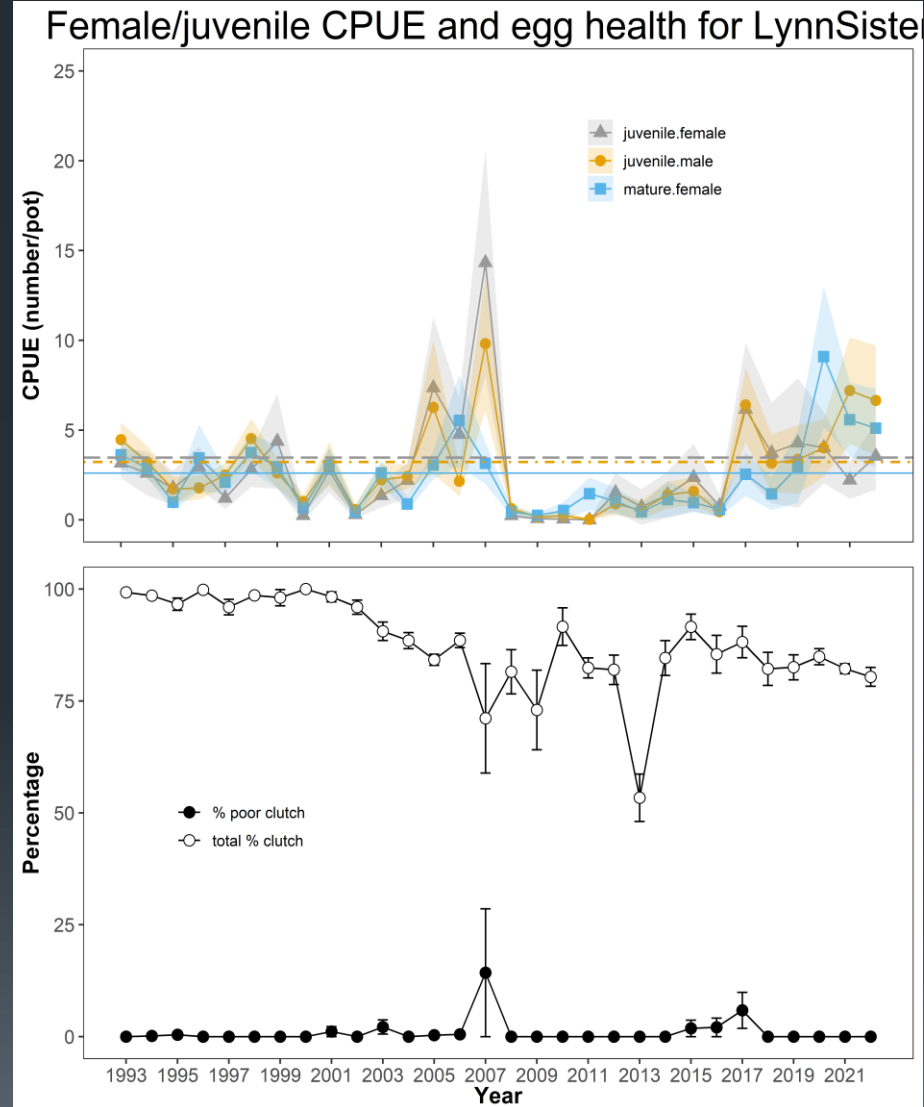
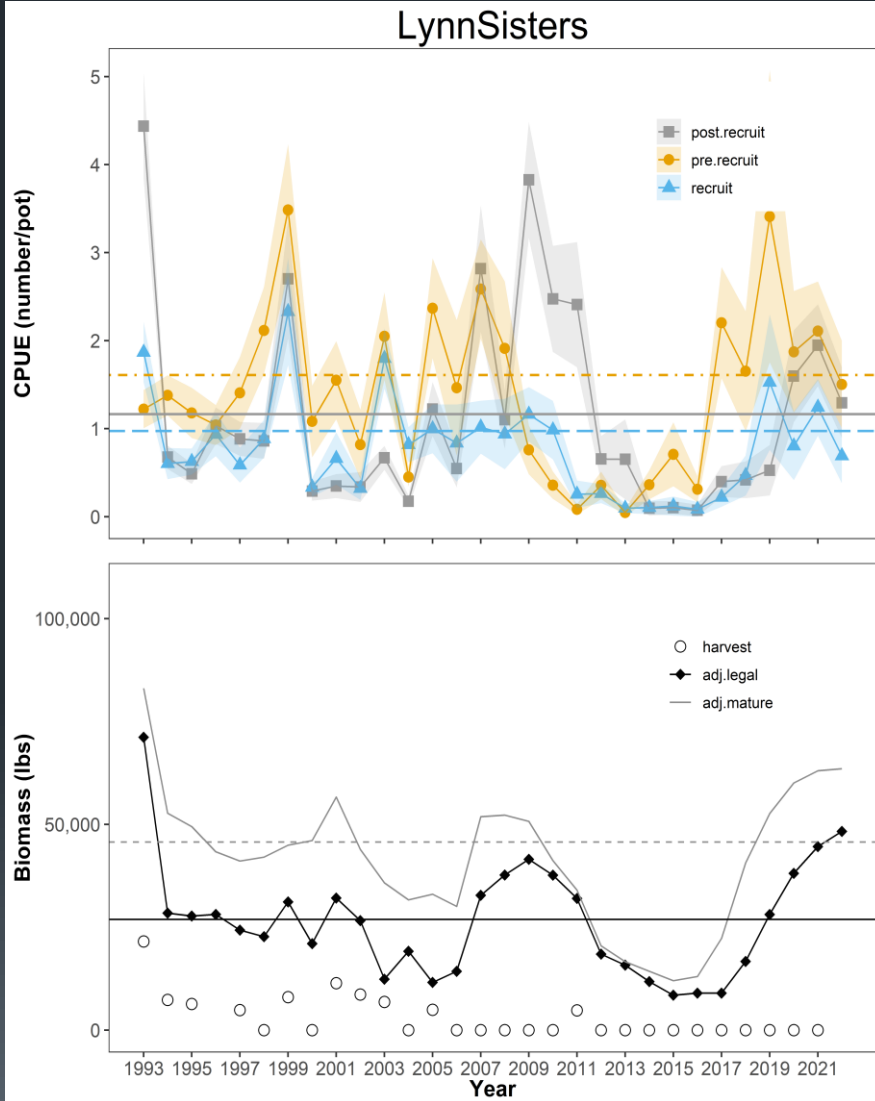
# Seymour Canal



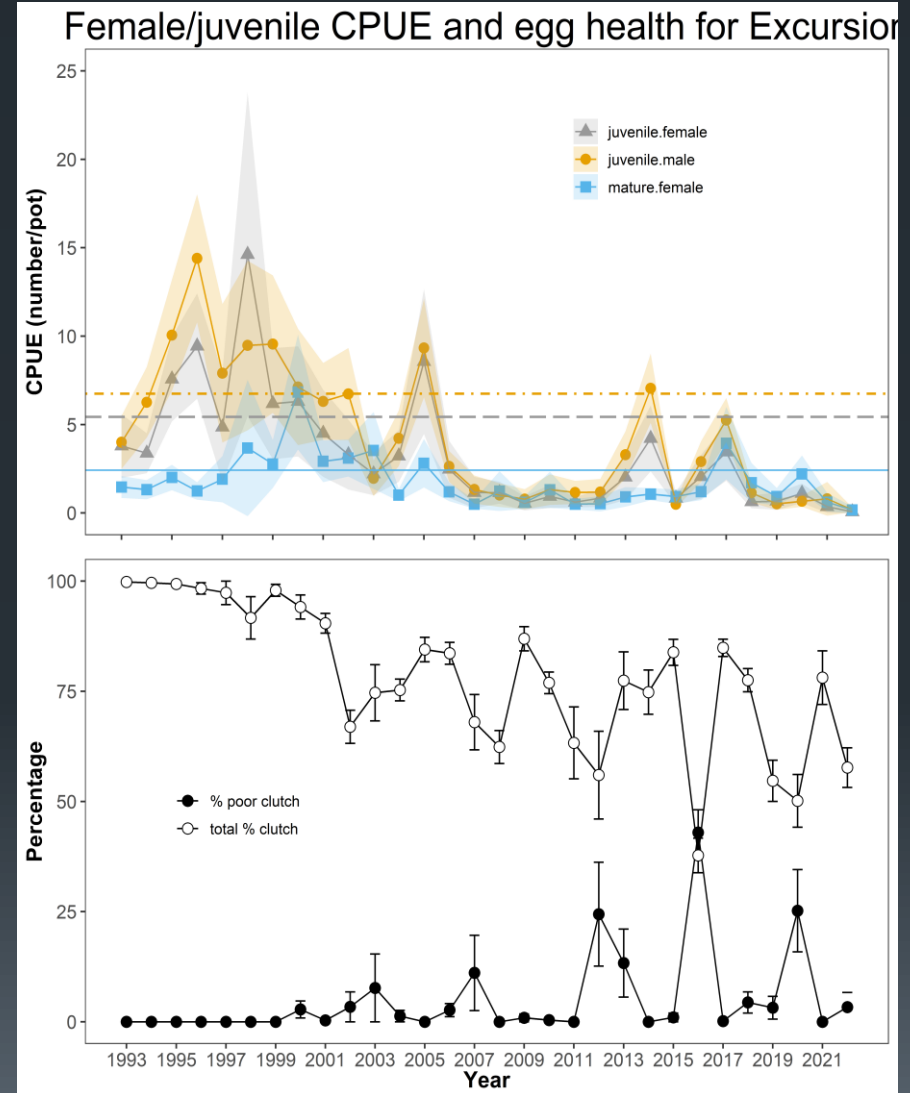
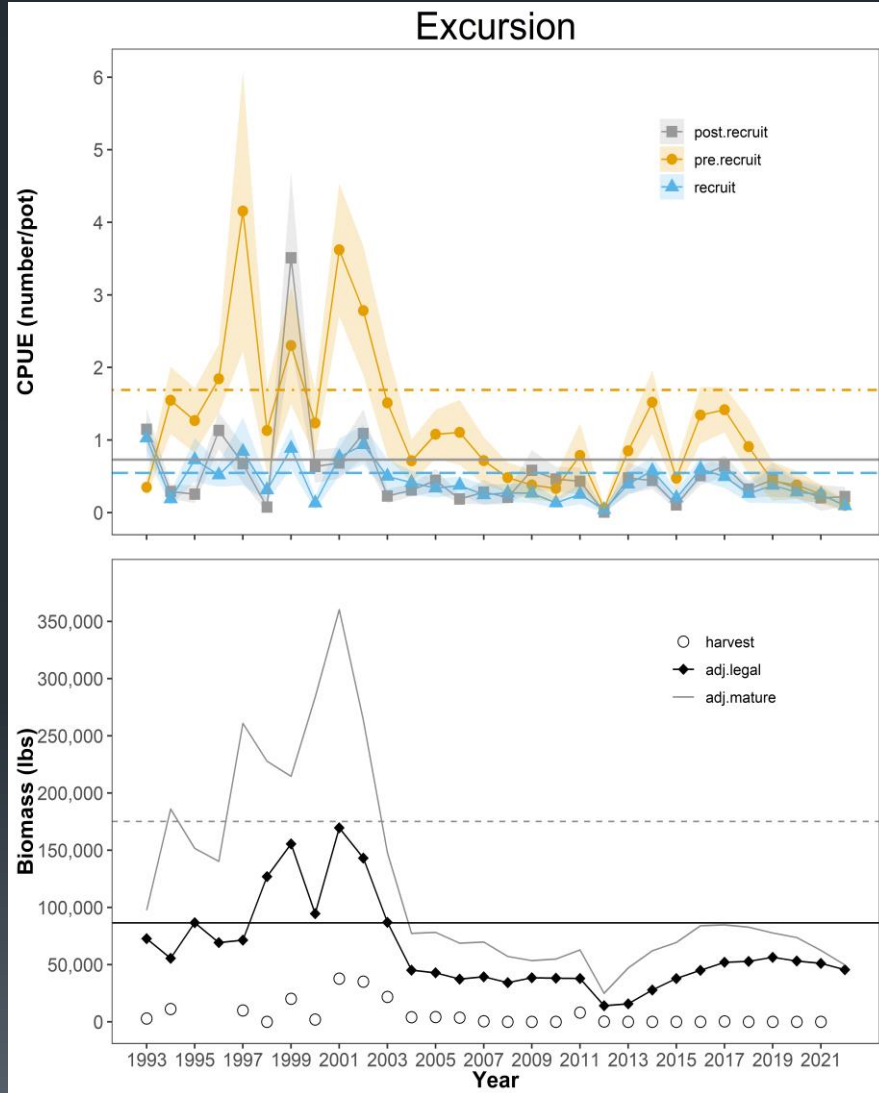
# Juneau Area



# Lynn Sisters



# Excursion Inlet





Survey area	Adjusted Legal Crab	Adjusted Mature biomass	Mature harvest rate	Total GHL	Personal use catch	2022 Commercial GHL
Pybus Bay	78,366	<b>93,578</b>	0%	0	0	0
Gambier Bay	63,923	<b>75,705</b>	0%	0	0	0
Seymour Canal	106,357	<b>131,963</b>	0%	0	0	0
Peril Strait	41,725	<b>66,943</b>	0%	0	0	0
Juneau Area	313,371	<b>456,921</b>	7.0%	31,984	19,190	12,794
Lynn Sisters	48,294	<b>63,536</b>	0%	0	0	0
Excursion Inlet	45,590	<b>49,820</b>	0%	0	0	0
Other Areas	623,636	<b>838,932</b>	10%	83,893	1,000	82,893
Blue King Crab	7,395	<b>9,948</b>				0
Total	1,328,657	<b>1,787,347</b>				95,687

**Thank You**

