

Appendix: Gustavus

Guide to direct fieldwork for cataloging anadromous water bodies in Southeast Alaska



Symbols and Abbreviations

Survey data codes.

Code	
	Species
K	Chinook salmon
CH	chum salmon
CO	coho salmon
CT	cutthroat trout (anadromous and resident juveniles and adults)
DV	Dolly Varden char
OU	eulachon
S	sockeye salmon
P	pink salmon
RT	rainbow trout (unknown juvenile or resident adult)
SC	sculpin spp.
SH	steelhead trout (adult)
SB	threespine stickleback
LP	lamprey
	Lifestage
s	spawning
r	rearing
p	presence
	Sampling
EF	electrofishing
VI/VL	visual identification
HN	handnet
RS	route survey
MT	minnow trap
BS	beach seine
FN	fyke net

Map color key.

Action	Color
route correction	ginger pink
addition	apatite blue
future investigation	solar yellow
resident fish	poinsettia red
conveyance	lepidolite lilac
AWC	lapis lazuli

This appendix is a working document updated as new information is acquired. Figures and tables are numbered per water body. Pages numbers are eliminated to prevent document reprinting when individual pages are inserted or removed.

GUSTAVUS SURVEYS

Gustavus, population 516, lies on the north shore of Icy Passage at the mouth of the Salmon River in the St. Elias Mountains. It is surrounded by Glacier Bay National Park and Preserve on three sides and the waters of Icy Passage on the south.¹ Ten miles of road separate the Gustavus dock in Icy Strait and Bartlett Cove in the Glacier Bay National Park (Figure 1).

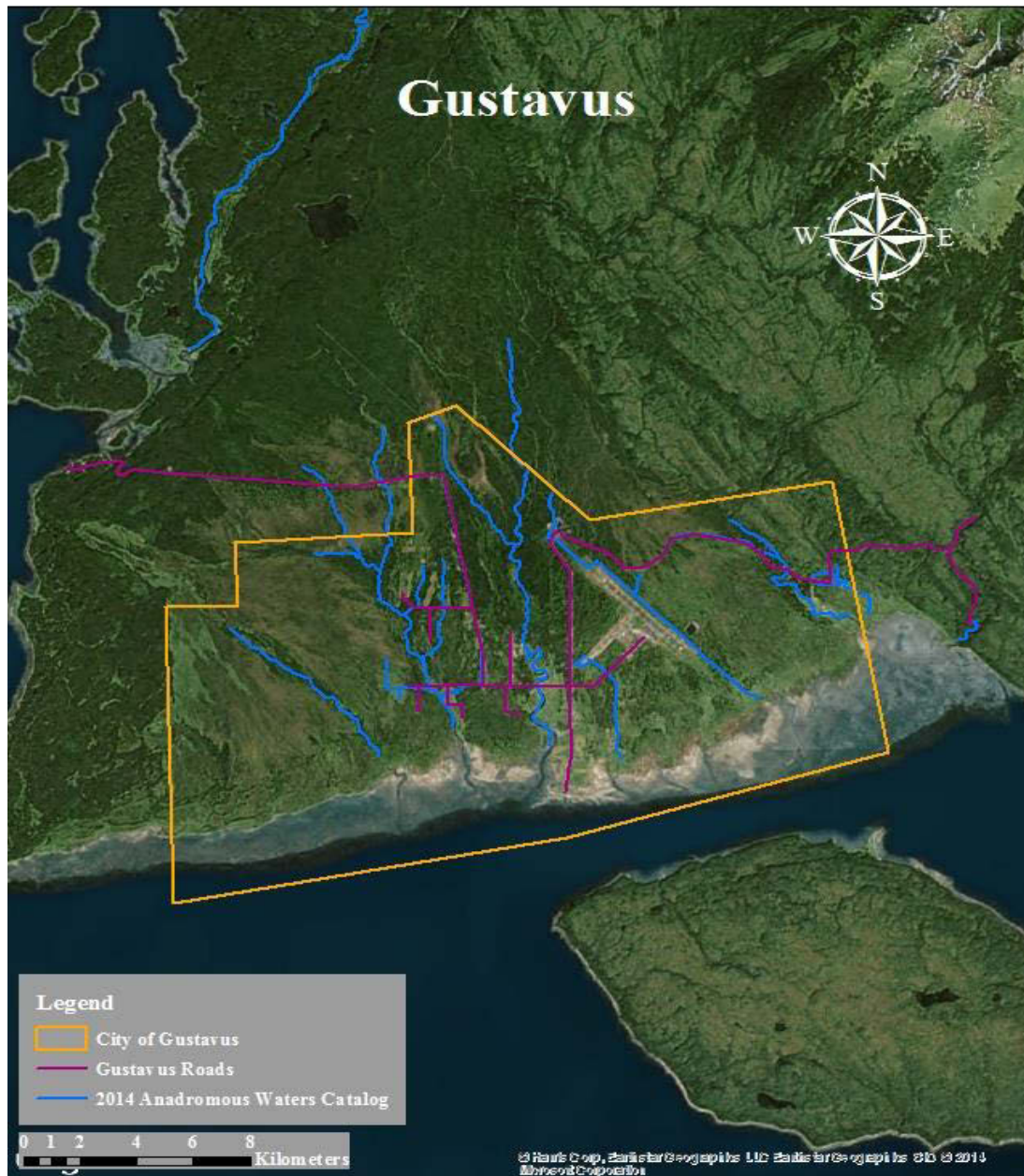


Figure 1.—Gustavus survey map.

¹ State of Alaska Department of Commerce, Community, and Economic Development, Division of Community and Regional Affairs database. Available from: <http://www.commerce.state.ak.us/cra/DCRAExternal/Community/Details/74866bc7-44d7-4184-9c42-2bf36bea4fec>. (Accessed June 24, 2015).

Gustavus

114-23-10199**CORRECTION****Water body name:****Survey date:** 10/3/2007**Water body number:** 114-23-10199**Species & Lifestage:** COpr**Watershed:** Excursion River-Frontal Icy Strait**MTR:** C040S059E**Quad:** Juneau B-6**Findings:** The upper extent of anadromy is incorrect; the stream extends past the airport. Coho were also captured in 5 ponds (Table 1).**Recommendations:** Correct the upper extent of anadromy and add lakes (Figure 1).**Nomination:** 07-501

Table 1.–114-23-10199 survey data.

Waypoint	Latitude	Longitude	Notes	Sample Effort	Sample Results
1	58.4478	-135.7336	Upper extent of anadromy.	MT	13 CO, 1 DV
2	58.4426	-135.7338	Southwest pond.	MT	8 CO
3	58.4420	-135.7312	Southcentral pond.	MT	1 CO
4	58.4421	-135.7289	Southeast pond.	MT	3 CO
5	58.4436	-135.7297	Northeast pond.	MT	12 CO

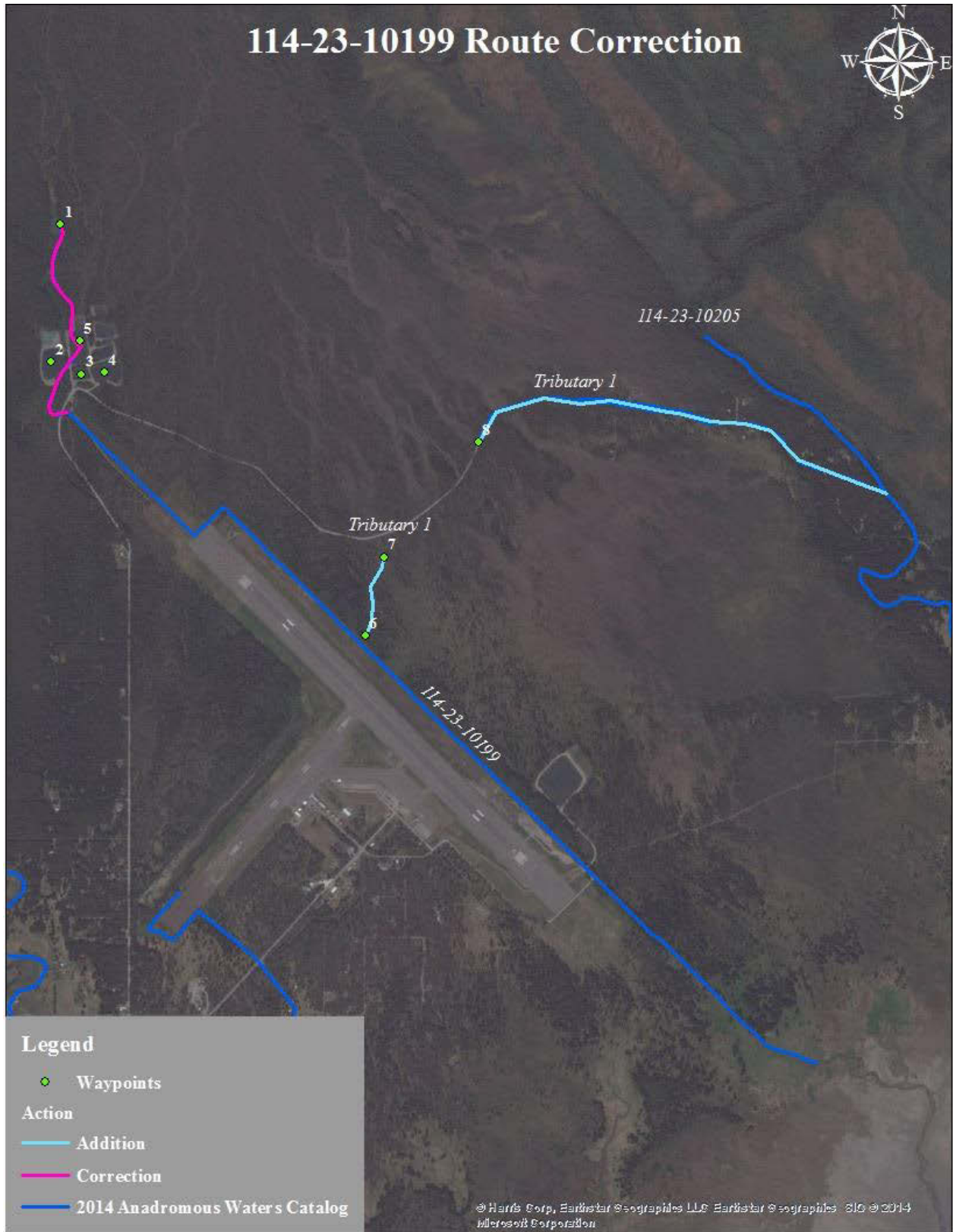


Figure 1.—114-23-10199 route correction map.

114-23-10199-2100**ADDITION****Water body name:** Boey's Ditch**Survey date:** 10/3/2006**Water body number:** 114-23-10199-2100**Species & Lifestage:** CO**Watershed:** Excursion River-Frontal Icy Strait**MTR:** C040S059E **Quad:** Juneau B-6**Findings:** Juvenile coho salmon were captured in this stream using minnow traps (Table 1).**Recommendations:** Add tributary to the Anadromous Waters Catalog (Figure 1).**Nomination:** 08-520

Table 1.–114-23-10199-2100 survey data.

Waypoint	Latitude	Longitude	Notes	Sample Effort	Sample Results
6	58.4301	-135.7065	Lower extent.		
7	58.4338	-135.7051	Upper extent.	MT	2 CO

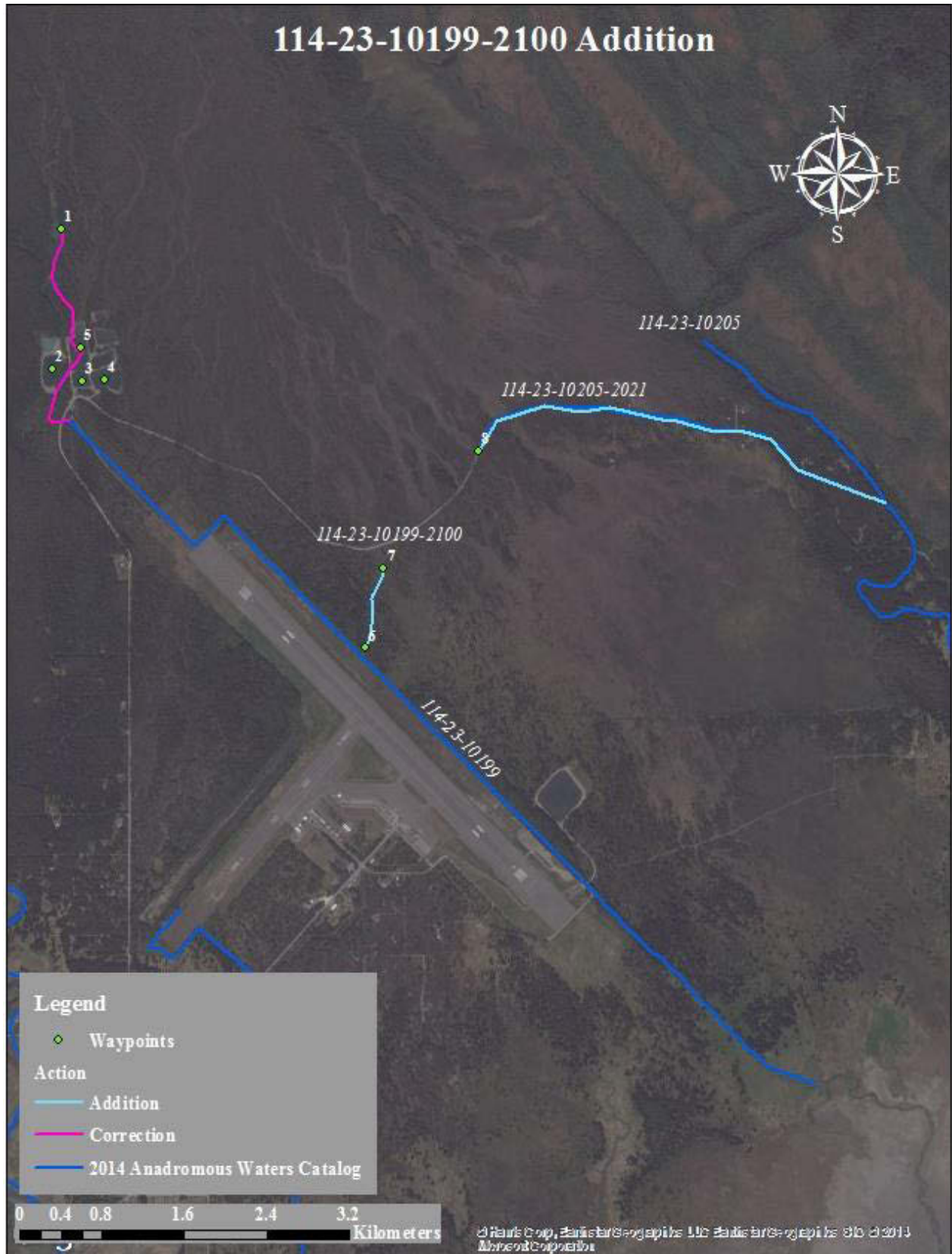


Figure 1.—114-23-10199-2100 addition map.

Gustavus

114-23-10205-2021**ADDITION****Water body name:****Survey date:** 7/26/2006**Water body number:** 114-23-10205-2021**Species & Lifestage:** COr, Pp**Watershed:** Excursion River-Frontal Icy Strait**MTR:** C039S059E**Quad:** Juneau B-6**Findings:** Juvenile coho salmon were captured and observed in this stream using minnow traps (Table 1).**Recommendations:** Add tributary to the Anadromous Waters Catalog (Figure 1).**Nomination:** 06-509

Table 1.–114-23-10205-2021 survey data.

Waypoint	Latitude	Longitude	Notes	Sample Effort	Sample Results
			Lower extent unknown.		
8	58.4389	135.6967	Upper extent.	VI	CO, DV

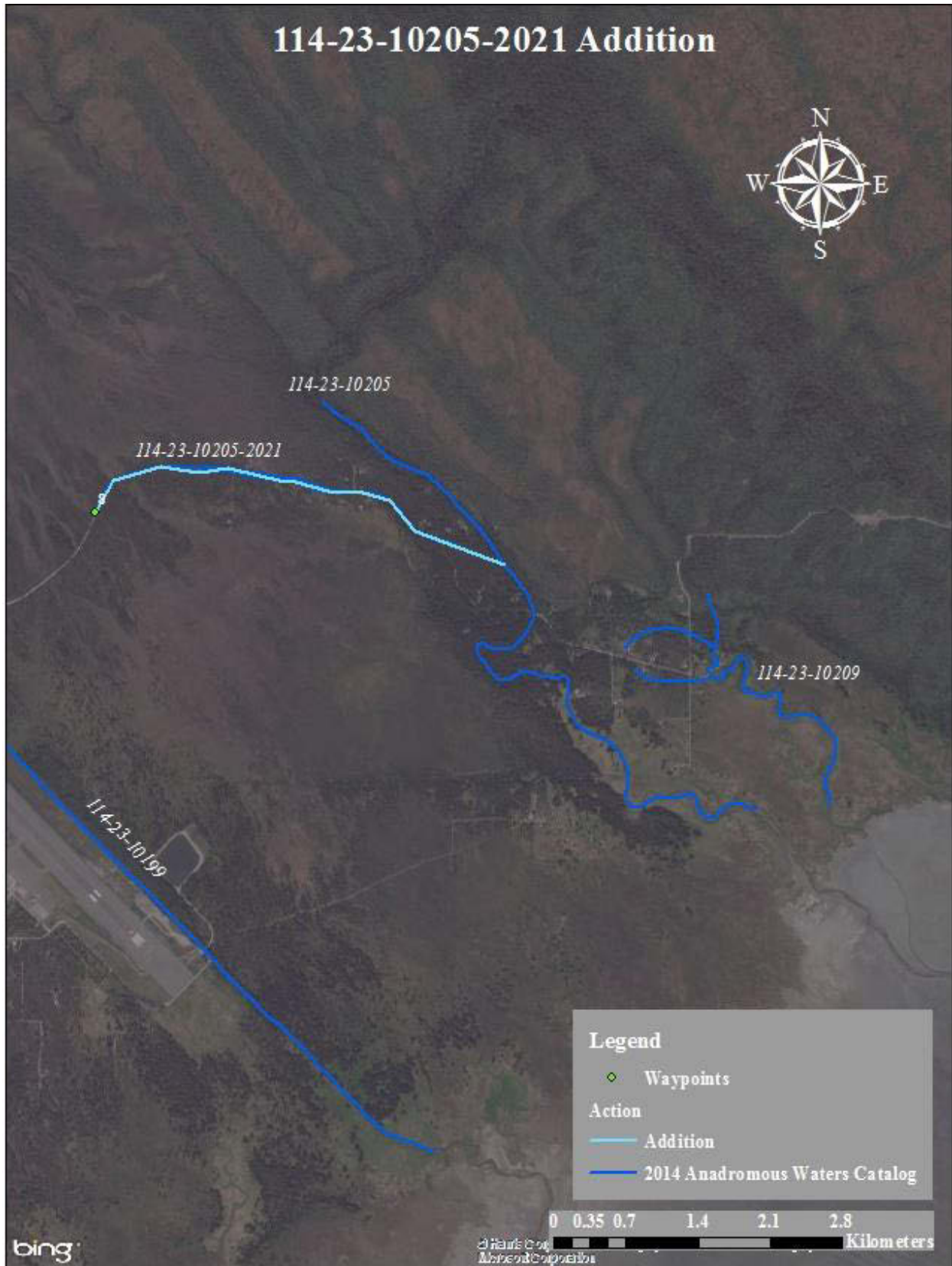


Figure 1.—114-23-10205-2021 addition map.

Gustavus