

# Appendix: Tenakee Springs

---

---

## Guide to direct fieldwork for cataloging anadromous water bodies in Southeast Alaska



## Symbols and Abbreviations

Survey data codes.

Code	
	<b>Species</b>
K	Chinook salmon
CH	chum salmon
CO	coho salmon
CT	cutthroat trout (anadromous and resident juveniles and adults)
DV	Dolly Varden char
OU	eulachon
S	sockeye salmon
P	pink salmon
RT	rainbow trout (unknown juvenile or resident adult)
SC	sculpin spp.
SH	steelhead trout (adult)
SB	threespine stickleback
LP	lamprey
	<b>Lifestage</b>
s	spawning
r	rearing
p	presence
	<b>Sampling</b>
EF	electrofishing
VI/VL	visual identification
HN	handnet
RS	route survey
MT	minnow trap
BS	beach seine
FN	fyke net

Map color key.

Action	Color
route correction	ginger pink
addition	apatite blue
future investigation	solar yellow
resident fish	poinsettia red
conveyance	lepidolite lilac
AWC	lapis lazuli

*This appendix is a working document updated as new information is acquired. Figures and tables are numbered per water body. Pages numbers are eliminated to prevent document reprinting when individual pages are inserted or removed.*

## TENAKEE SPRINGS SURVEYS

Tenakee Springs, population 128, is located on the east side of Chichagof Island, on the north shore of Tenakee Inlet (Figure 1).<sup>1</sup> Tenakee Avenue, the main road, is about 2 miles long.

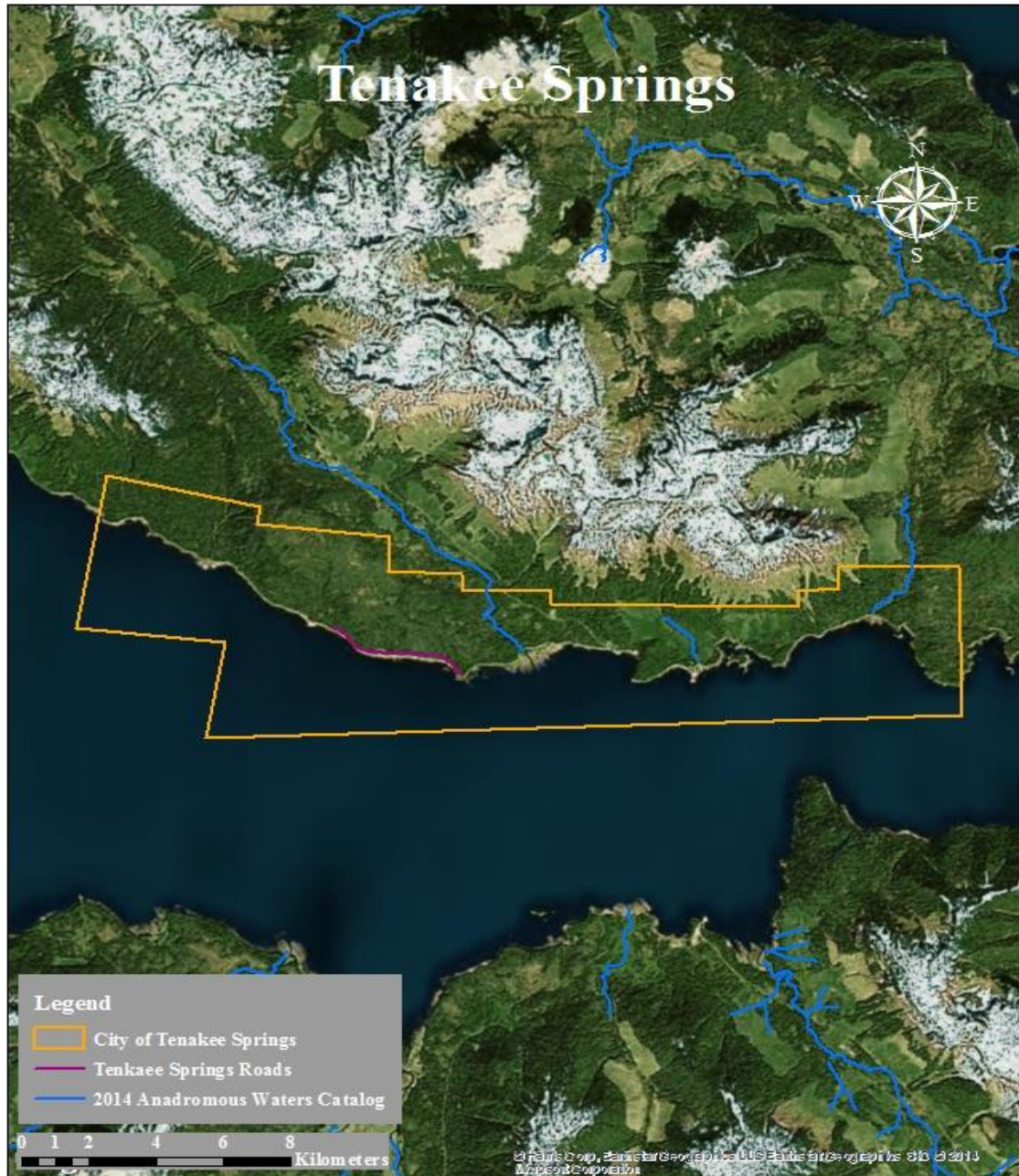


Figure 1.–Tenakee Springs survey map.

<sup>1</sup> State of Alaska Department of Commerce, Community, and Economic Development, Division of Community and Regional Affairs database. Available from: <http://www.commerce.state.ak.us/cra/DCRAExternal/Community/Details/ecaf2206-4d4a-46d7-bdfa-1760ebbf3564>. (Accessed June 24, 2015).

Tenakee Springs

**112-42-10080****CORRECTION****Water body name:** Indian River**Survey date:** 8/29/2012**Water body number:** 112-42-10080**Species & Lifestage:** CHp, COpr, Pp, DVp**Watershed:** Tenakee Inlet-Frontal Chatham Strait**MTR:** C047S063E **Quad:** Sitka D-4**Findings:** We surveyed Indian River using minnow traps and a GPS (Table 1). We captured rearing coho salmon and Dolly Varden char at Site 8.**Recommendations:** Extend anadromous reach of Indian River up to waypoint 4, where rearing coho were captured in August, 2012 (Figure 1).**Nomination:** 14-727

Table 1.–112-42-10080 survey data.

Waypoint	Latitude	Longitude	Notes	Sample Effort	Sample Results
4	57.8650	-135.3200	Site 8. 2 CO at this location and other traps in area caught DV.	MT	2 CO, 248 DV



Figure 1.-112-42-10080 route correction map.

Tenakee Springs

**112-42-10080-2202****ADDITION****Water body name:****Survey date:** 8/30/2012**Water body number:** 112-42-10080-2202**Species & Lifestage:** CO**Watershed:** Tenakee Inlet-Frontal Chatham Strait**MTR:** C047S063E **Quad:** Sitka D-4

**Findings:** We surveyed this tributary to Indian River using minnow traps and a GPS (Table 1). We set 30 minnow traps between the mouth and waypoint 1. We captured rearing coho salmon and Dolly Varden char at site 4.

**Recommendations:** Add stream and rearing coho salmon to the AWC (Figure 1).

**Nomination:** 14-729

Table 1.—112-42-10080-2202 survey data.

Waypoint	Latitude	Longitude	Notes	Sample Effort	Sample Results
1	57.8284	-135.2610	Site 4. 30 traps set between this location and mainstem.	MT	9 CO, 220 DV



Figure 1.-112-42-10080-2202 addition map; labeled Tributary 1 on map.  
 Tenakee Springs



**112-42-10080-2241****ADDITION****Water body name:****Survey date:** 8/29/2012**Water body number:** 112-42-10080-2241**Species & Lifestage:** CO**Watershed:** Tenakee Inlet-Frontal Chatham Strait**MTR:** C047S063E **Quad:** Sitka D-4**Findings:** We surveyed this tributary to Indian River using minnow traps and a GPS (Table 1). We set 30 minnow traps between the mouth and waypoint 2. We captured rearing coho salmon and Dolly Varden char.**Recommendations:** Add stream and rearing coho salmon to the AWC (Figure 1).**Nomination:** 14-728

Table 1.—112-42-10080-2241 survey data.

Waypoint	Latitude	Longitude	Notes	Sample Effort	Sample Results
2	57.8416	-135.2900	Site 6. 30 minnow traps set between this location and the mainstem.	MT	28 CO, 142 DV

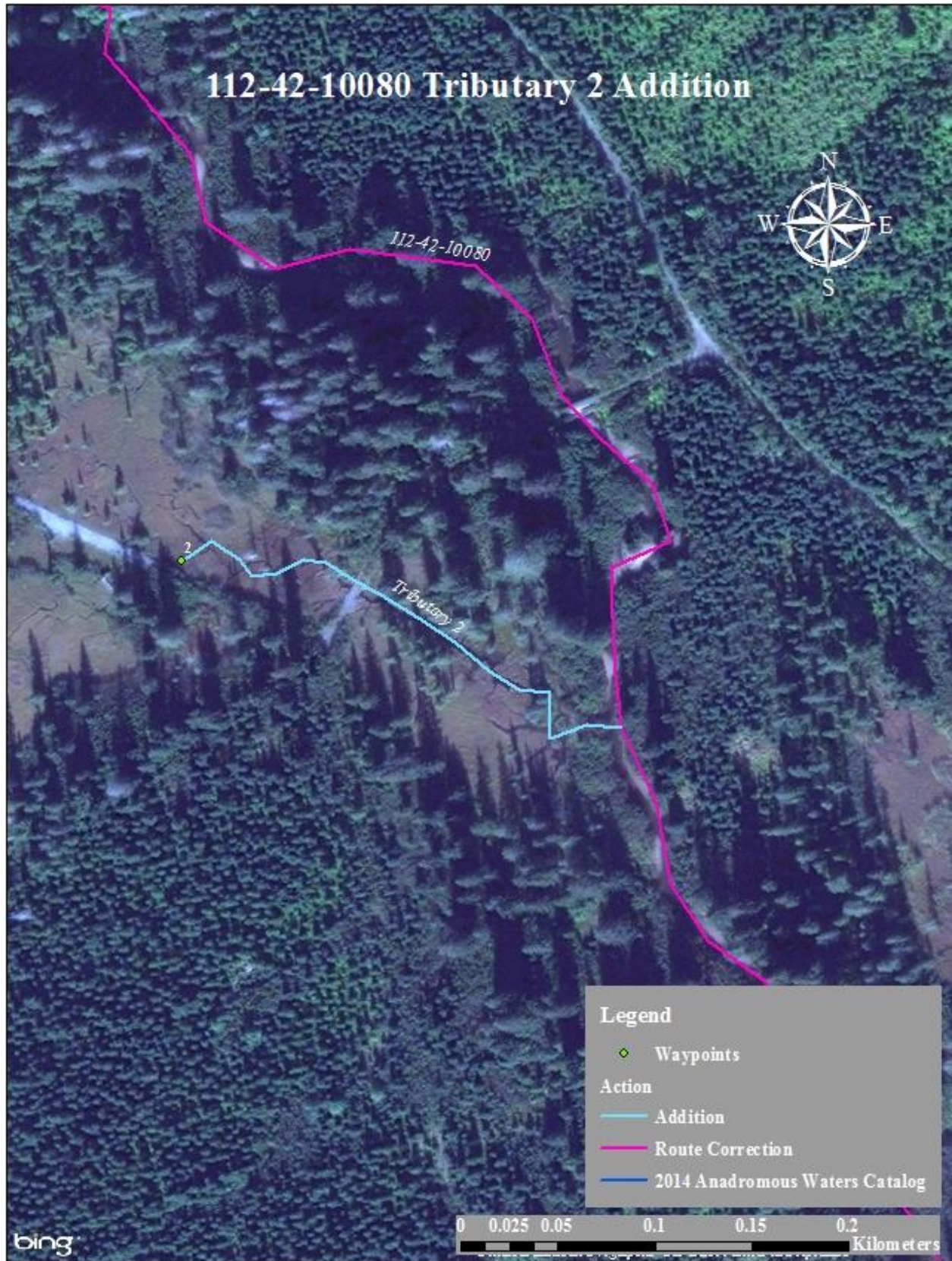


Figure 1.—112-42-10080-2241 addition map; labeled Tributary 2 on map.

Tenakee Springs

**112-42-10080-2302****ADDITION****Water body name:****Survey date:** 8/29/2012**Water body number:** 112-42-10080-2302**Species & Lifestage:** CO**Watershed:** Tenakee Inlet-Frontal Chatham Strait**MTR:** C047S063E **Quad:** Sitka D-4**Findings:** We surveyed this uncataloged tributary using minnow traps and a GPS (Table 1). We set 30 minnow traps between the mouth and waypoint 3. We captured rearing coho salmon and Dolly Varden char.**Recommendations:** Add stream and rearing coho salmon to the AWC (Figure 1).**Nomination:** 14-730

Table 1.—112-42-10080-2302 survey data.

Waypoint	Latitude	Longitude	Notes	Sample Effort	Sample Results
3	57.8575	-135.3068	Site 7. 30 minnow traps set between this location and mainstem.	MT	129 CO, 34 DV



Figure 1.—112-42-10080-2302 addition map; labeled Tributary 3 on map.  
 Tenakee Springs

**112-42-10120****CORRECTION****Water body name:** Tenakee Creek**Survey date:** 5/27/2015**Water body number:** 112-42-10120**Species & Lifestage:** Pp**Watershed:** Tenakee Inlet-Frontal Chatham Strait**MTR:** C047S063E **Quad:** Sitka D-4**Findings:** We used a backpack electrofisher and caught Dolly Varden char and rearing coho salmon (Table 1). The stream route differs from the current AWC (Figures 1, 2).**Recommendations:** Add coho salmon and update the stream route in the AWC.**Nomination:** 15-651

Table 1.—112-42-10120 survey data.

Waypoint	Latitude	Longitude	Notes	Sample Effort	Sample Results
999	57.7801	-135.1390	Confluence of side channel and Tenakee Creek. Tenakee Creek is clear with good spawning substrate.		
1000	57.7824	-135.1395	Bridge over creek. ~ 15 ft wide, 8% grade.		
1003	57.7825	-135.1396	Seeping trib entering on river left.		
1005	57.7837	-135.1426	Tributary entering on river right.		
1006	57.7848	-135.1424	Top of watered area. Water coming in from under the forest.		
1007	57.7843	-135.1428	Trib entering river left. Steep chute, bedrock at mouth. Upstream is cobble and gravel.		
1008	57.7840	-135.1441	Upper extent of tributary on river right.		
1011	57.7842	-135.1430	In mainstem just upstream of tributary.	EF	1 DV, and 1 DV below
1012	57.7843	-135.1435		EF	3 DV, 1 YOY CO
1013	57.7848	-135.1441	4-5 ft. plunge over tree roots.		
1014	57.7849	-135.1447	Trib river left, staying on mainstem.		
1015	57.7853	-135.1453	Trib river left.	EF	2 DV
1019	57.7853	-135.1465		EF	2 DV
1020	57.7858	-135.1472	Higher gradient, cobble.	EF	2 DV
1021	57.7860	-135.1478	Rock chute barrier.		
1022	57.7866	-135.1482	Stopped EF above barrier. No fish.		

Table 1.—Continued.

Waypoint	Latitude	Longitude	Notes	Sample Effort	Sample Results
1023	57.7873	-135.1480	At base of 40 ft waterfall.		
1025	57.7839	-135.1428	Gravel, wood, organics. Mouth of trib.		
1026	57.7840	-135.1433	DV up to this point.	EF	DV
1028	57.7839	-135.1427	In mainstem side pool.	EF	2 CO
1031	57.7811	-135.1398		EF	No Fish
1032	57.7825	-135.1415		EF	No Fish
1034	57.7800	-135.1394		EF	1 DV, and 1 DV below
1035	57.7787	-135.1374	Mouth of Tenakee Creek.		



Figure 1.—Coho salmon caught in Tenakee Creek.

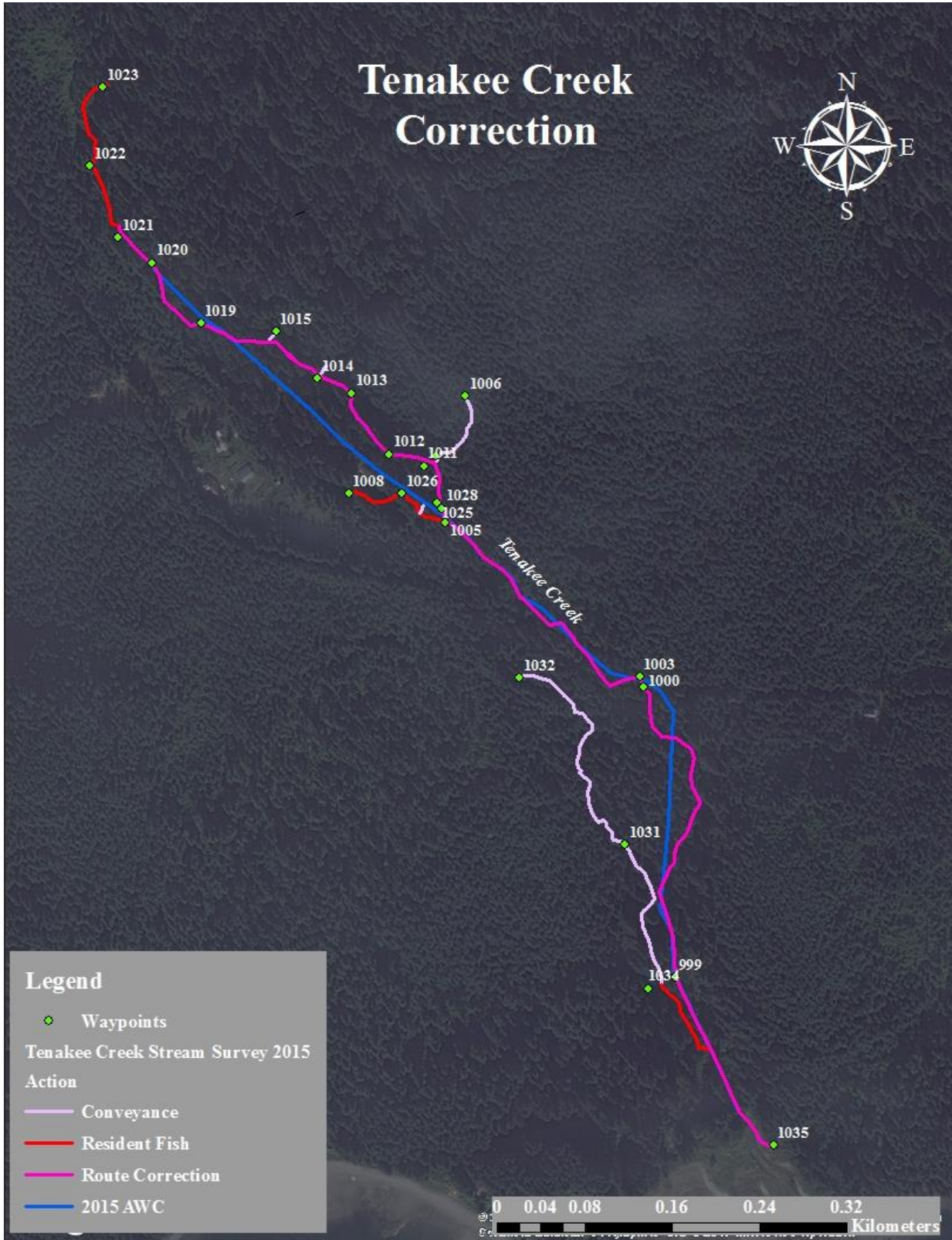


Figure 2.—Stream No. 112-42-10120 survey map; labeled Tenakee Creek on map.

Tenakee Springs

Tenakee Springs



## TENAKEE SPRINGS STREAMS REQUIRING FUTURE INVESTIGATION

Table 1.—Start points of Tenakee Springs streams requiring future investigation.

Waypoint	Latitude	Longitude
1	57.8140	-135.2470
2	57.8284	-135.2610
3	57.8390	-135.2840
4	57.8480	-135.3000
5	57.8540	-135.3090
6	57.8590	-135.3130
7	57.8650	-135.3200



Figure 1.—2014 Tenakee Springs index future investigation map.

Tenakee Springs

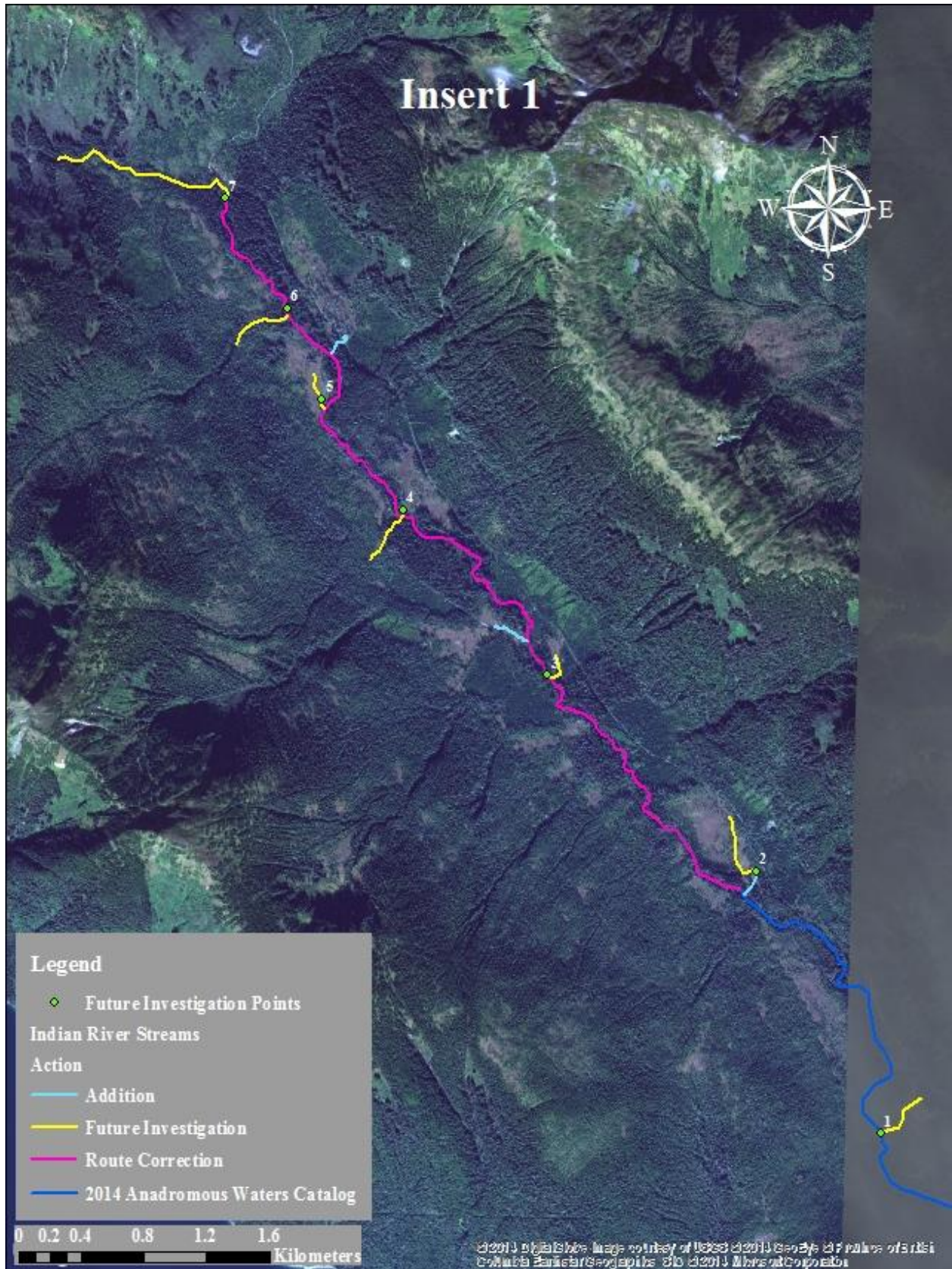


Figure 2.—Insert 1 map.

Tenakee Springs