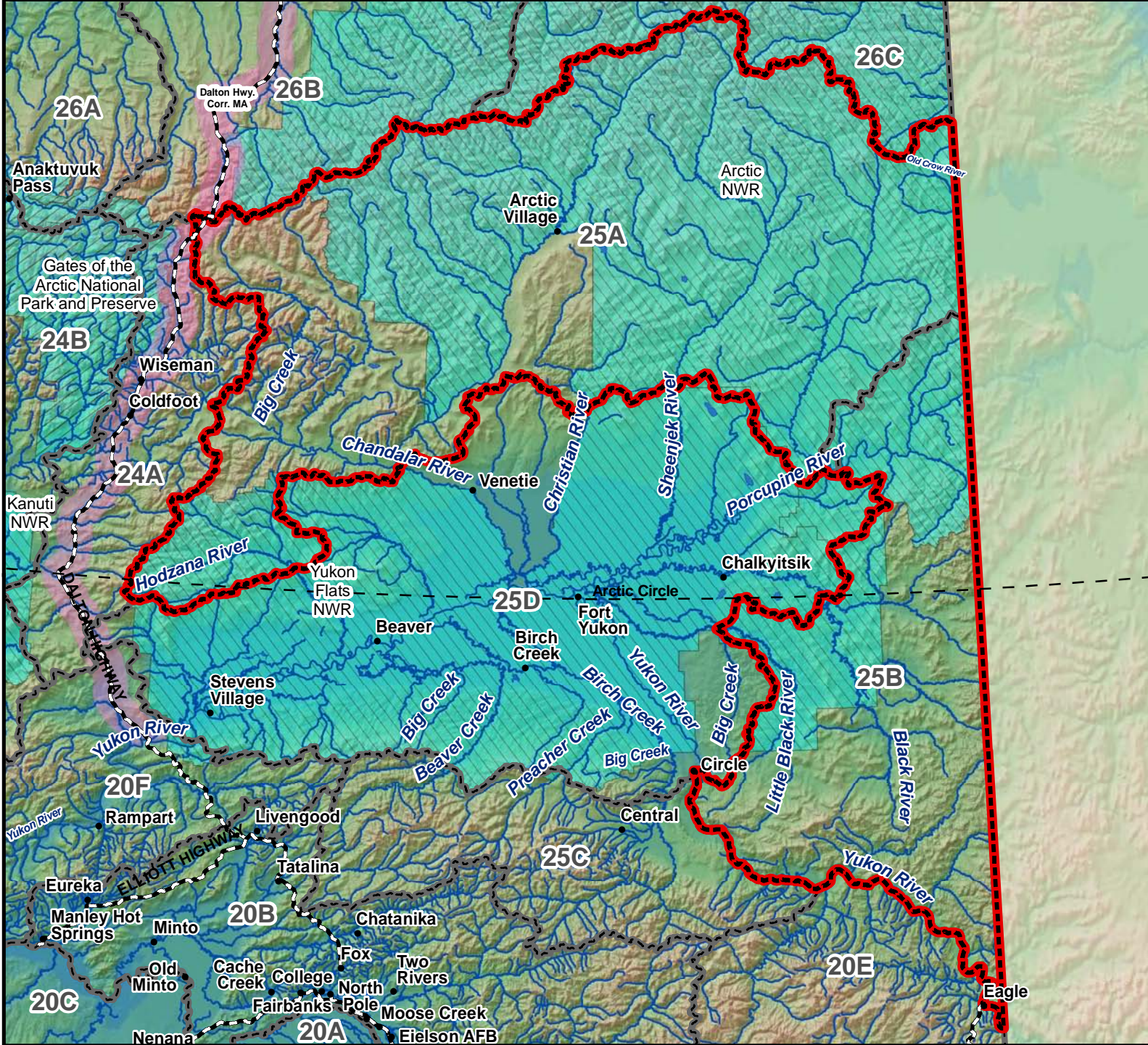


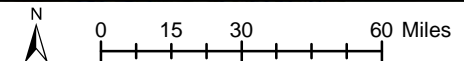
# Units 25A and 25B

## Brown Bear - General Hunt

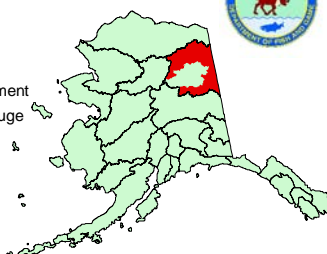
### Residents and Nonresidents



**AREA DESCRIPTION:** Units 25A and 25B.



- Hunt Area
- Subunit Boundary
- Closed Area
- Controlled Use Area
- Management Area
- National Park/Monument
- National Wildlife Refuge
- Military Closure
- Other State Areas
- Closed to Hunting



Please refer to the Alaska Hunting Regulations booklet for bag type, seasons, and additional regulations concerning this hunt.