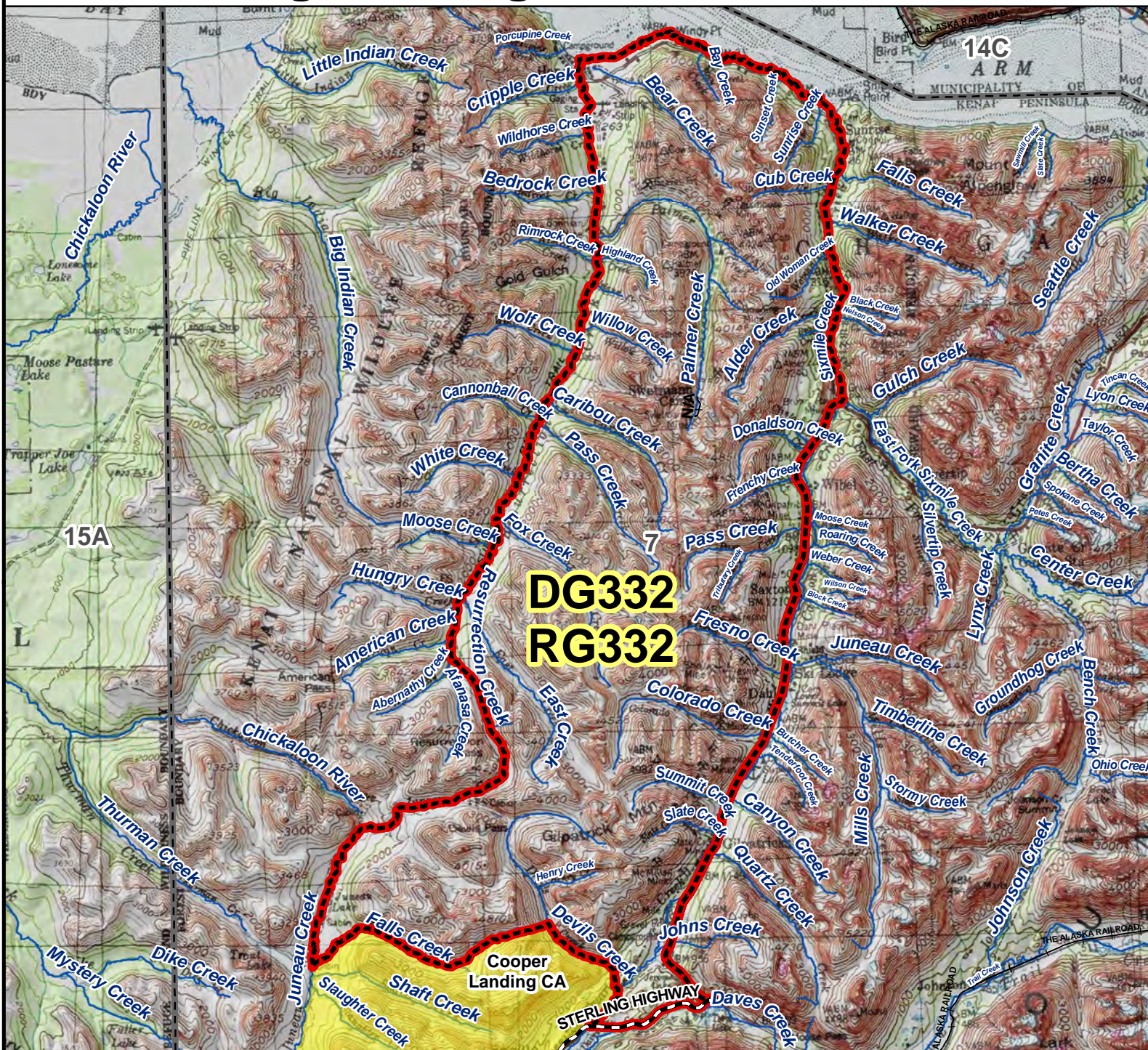


# DG332 RG332 Mountain Goat Drawing and Registration Permit Hunt



**DG332**  
**RG332**

**AREA DESCRIPTION:** Unit 7, Gilpatrick Mountain, that portion beginning where Sixmile Creek enters Turnagain Arm, then westerly along the south shore of Turnagain Arm to the mouth of Resurrection Creek, then southerly up Resurrection Creek to Resurrection Pass, then southerly along Juneau Creek to Falls Creek, then easterly up Falls Creek, the North Fork of Falls Creek, and over the connecting saddle to Devils Creek, then southeasterly along Devils Creek to its confluence with Quartz Creek, then southerly along Quartz Creek to the Sterling Highway, then easterly along the Sterling Highway to its junction with the Seward Highway, then northerly along the Seward Highway to the bridge across Canyon Creek, then northerly down Canyon Creek to its confluence with Sixmile Creek, then northerly down Sixmile Creek to the point of origin.

