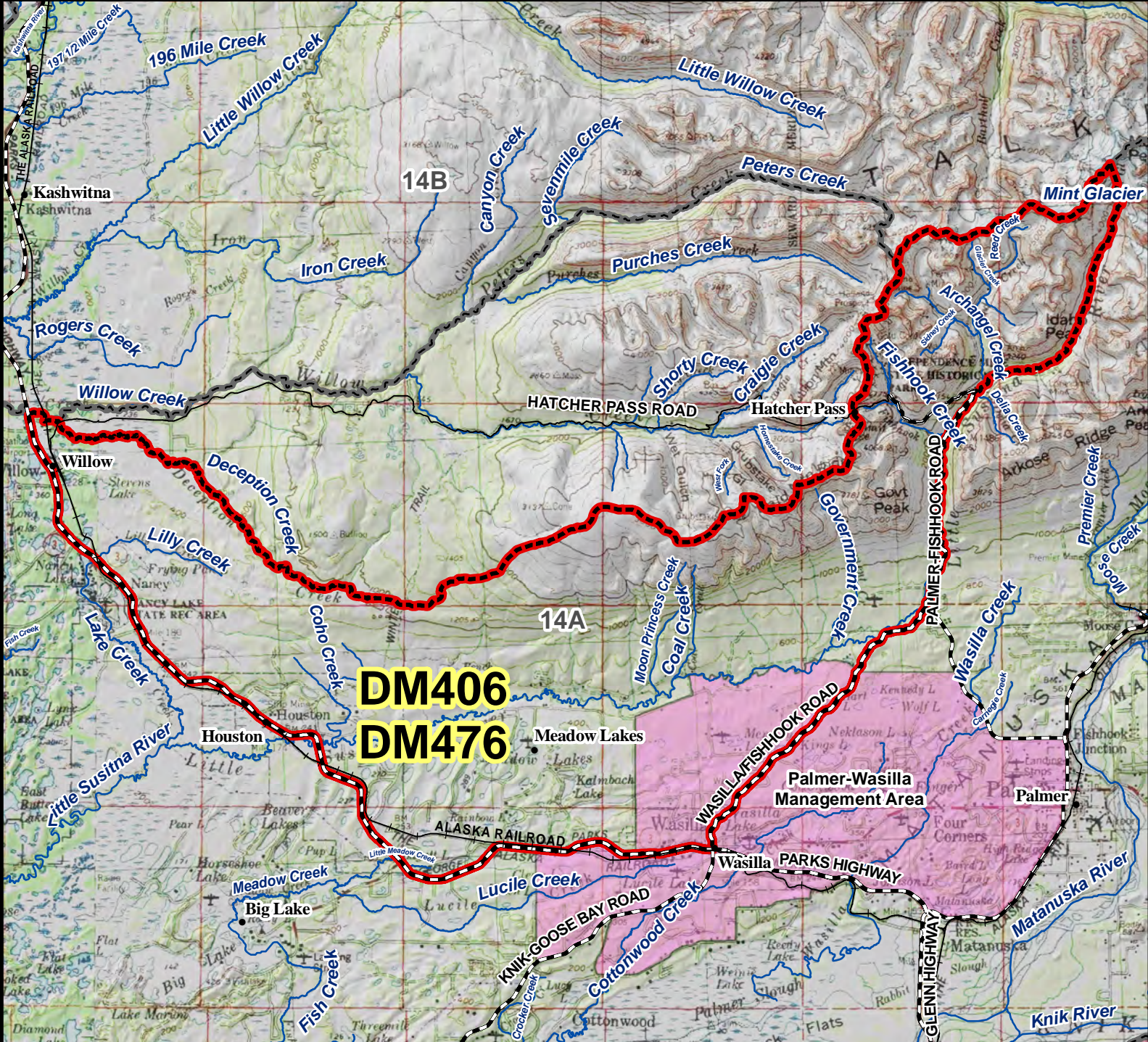
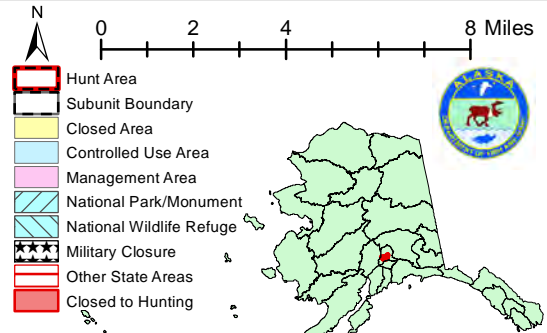


DM406 DM476 Moose Drawing Permit Hunt

This map is intended for hunt planning use, not for determining legal property or regulatory boundaries. Content is compiled from various sources and is subject to change without notice. See current hunting regulations for written descriptions of boundaries. Hunters are responsible for knowing the land ownership and regulations of the areas they intend to hunt.



AREA DESCRIPTION: 14A, Bald Mountain Ridge, that western portion bounded on the south and west by the Parks Highway from Knik-Goose Bay Road to Willow Creek; bounded on the east by a line along Wasilla-Fishhook Road to its junction with Palmer-Fishhook Road, thence north along Hatcher Pass Road to the first bridge crossing the Little Susitna River, thence along the Little Susitna River to Mint Glacier, thence along Mint Glacier to the Unit 14A boundary; and bounded on the north by a line running up Deception Creek from its mouth to its headwaters on Bald Mountain Ridge, thence east and north along the drainage divide separating the Willow Creek and Little Susitna River drainages to the Unit boundary.



Please refer to the Alaska Hunting Regulations booklet for bag type, seasons, and additional regulations concerning this hunt.