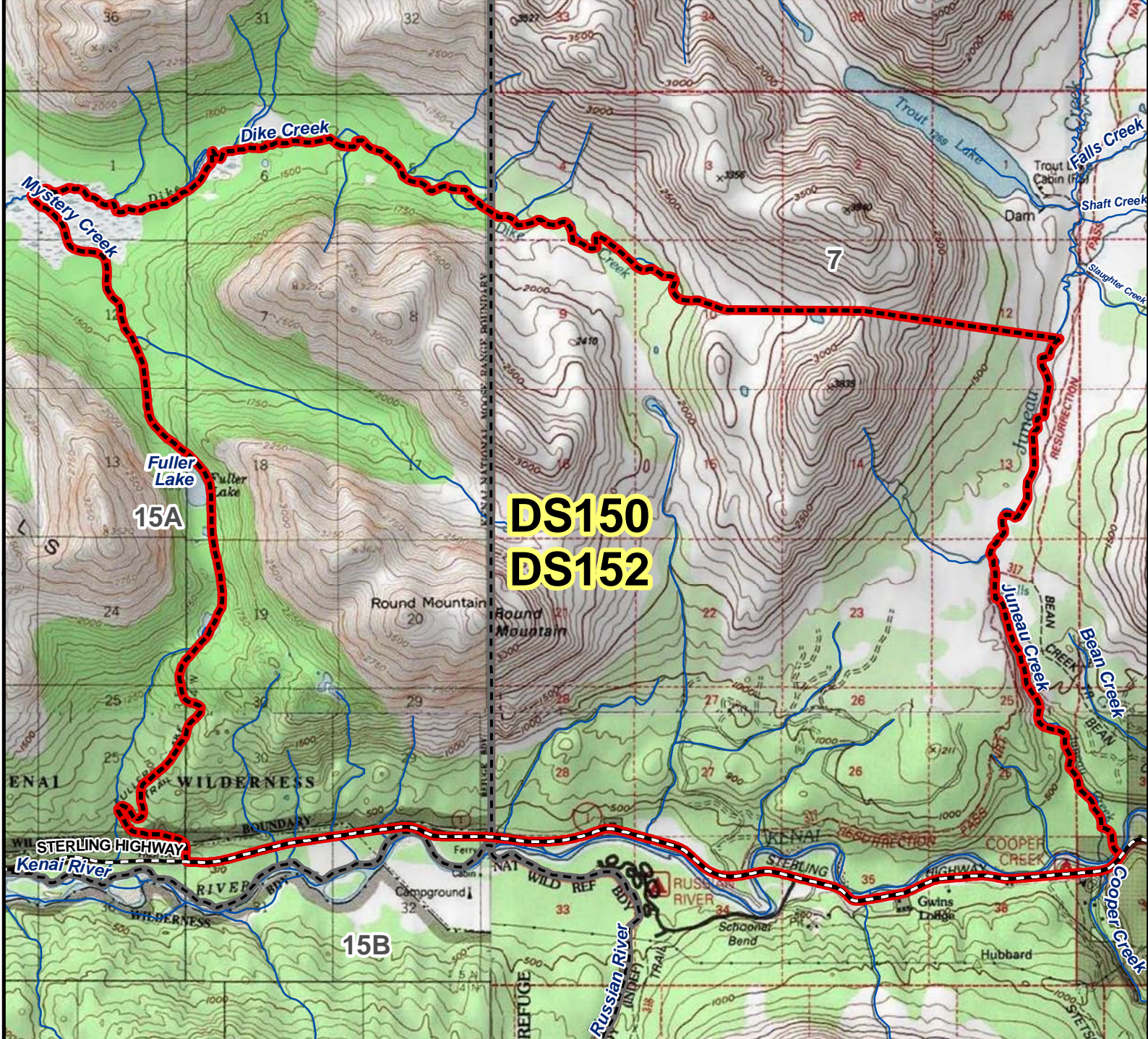


# DS150 DS152 Sheep Drawing Permit Hunt



**AREA DESCRIPTION:** Units 7 and 15A, those portions east of Fuller Lake Trail, south of Dike Creek and a straight line from the source of Dike Creek east through the divide south of Trout Lake to Juneau Creek, west of Juneau Creek, and north of the Sterling Highway.

N

0 0.425 0.85 1.7 Miles

- Hunt Area
- Subunit Boundary
- Closed Area
- Controlled Use Area
- Management Area
- National Park/Monument
- National Wildlife Refuge
- Military Closure
- Other State Areas
- Closed to Hunting