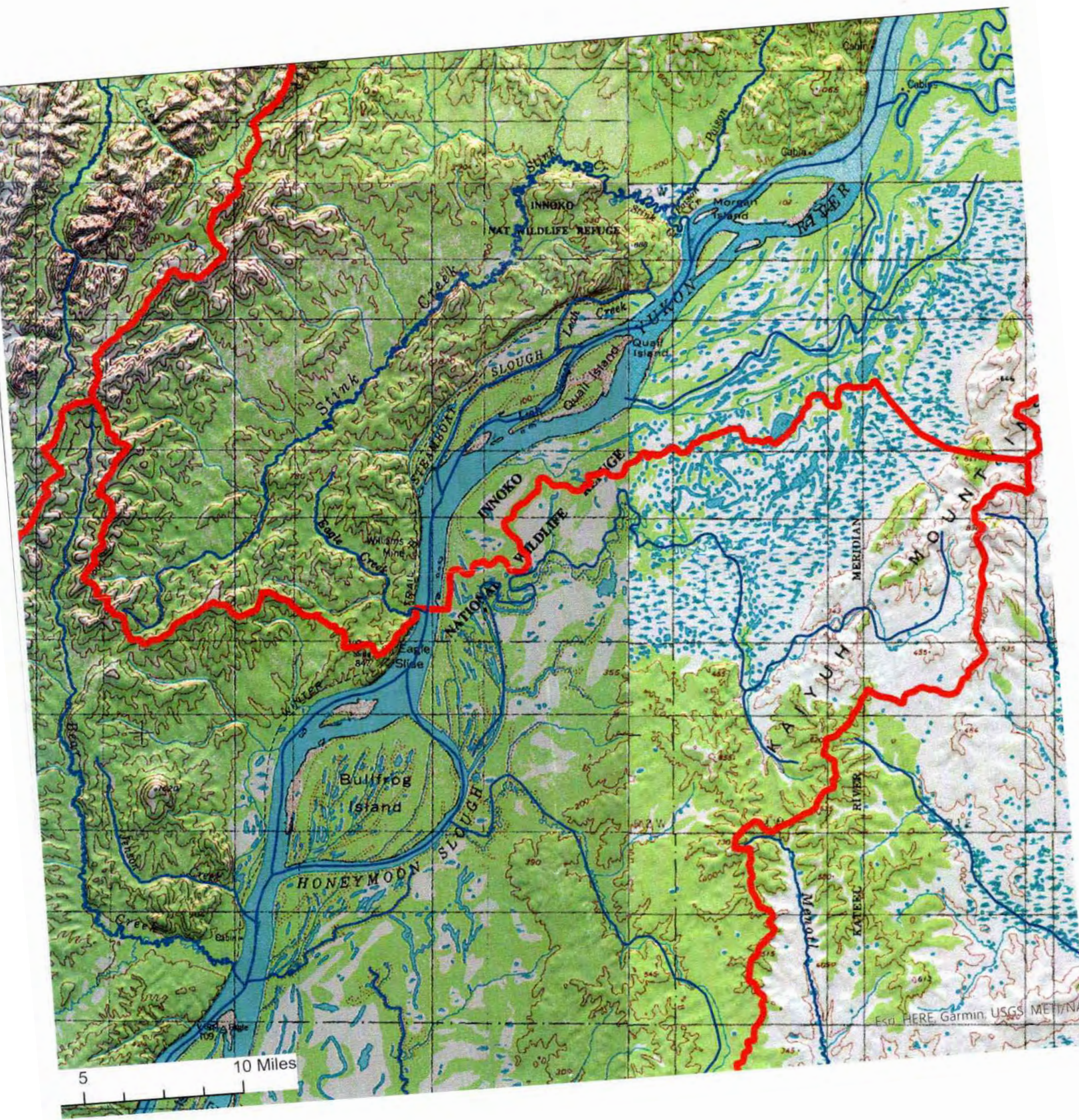


Proposal 119 - Maps and Additional Information
Submitted by Grayling, Anvik, Shageluk, and Holy Cross (GASH) AC



Proposal 119 - Maps and Additional Information Submitted by Grayling, Anvik, Shageluk, and Holy Cross (GASH) AC

Proposal Narrative, Maps, and Data

Existing GMU Boundary Descriptions:

Unit 21(D) consists of that portion of Unit 21 in the Yukon River drainage from and including the Blackburn Creek drainage upstream to Ruby, including the area west of the Ruby-Poorman Road, excluding the Koyukuk River drainage upstream from the Dulbi River drainage, and excluding the Dulbi River drainage upstream from Cottonwood Creek

GMU 21E

Unit 21(E) consists of that portion of Unit 21 in the Yukon River and Arhymot Lake drainages upstream from a line starting at the downriver boundary of Paimiut on the north bank of the Yukon River, then south across the Yukon River to the northern terminus of the Paimiut Portage, then south along the Portage to its intersection with Arhymot Lake, then along the northern and western bank of Arhymot Lake to the outlet at Crooked Creek (locally known as Johnson River) drainage, then to, but not including, the Blackburn Creek drainage, and the Innoko River drainage downstream from the Iditarod River drainage.

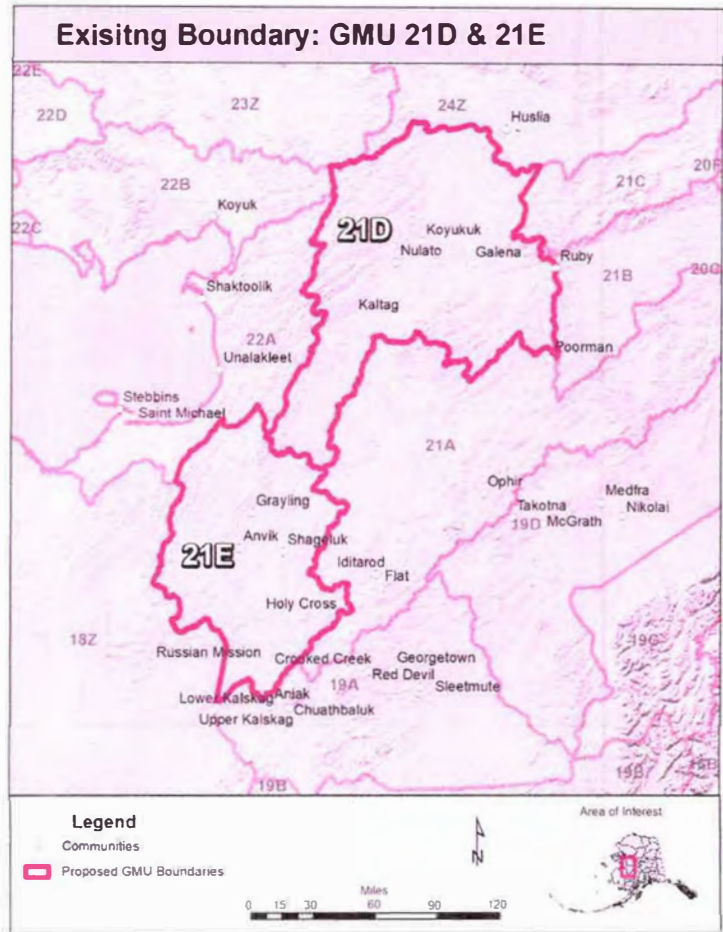
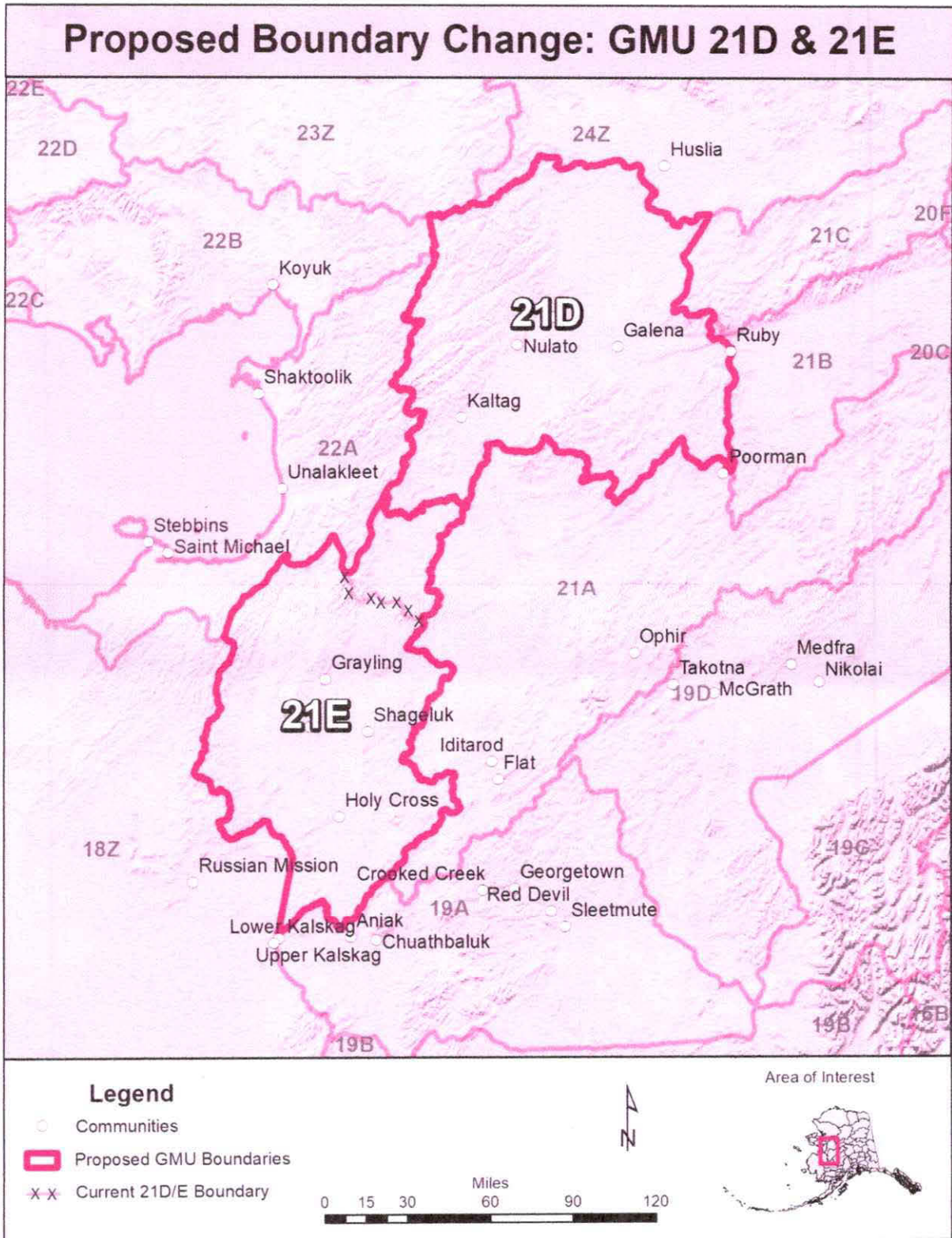


Figure 1. Existing GMU boundaries between GMU 21D and 21 E are shown in Red. Local communities are shown as white points.

Proposed Changes

| Existing GMU | Sq. miles |
|--------------|-----------|
| 21D | 12,113 |
| 21E | 7,998 |
| Total | 20,111 |
| | |
| Proposed GMU | Sq. miles |
| 21D | 11,037 |
| 21E | 9,074 |
| Total | 20,111 |

Proposal 119 - Maps and Additional Information
 Submitted by Grayling, Anvik, Shageluk, and Holy Cross (GASH) AC



Proposal 119 - Maps and Additional Information
Submitted by Grayling, Anvik, Shageluk, and Holy Cross (GASH) AC

