



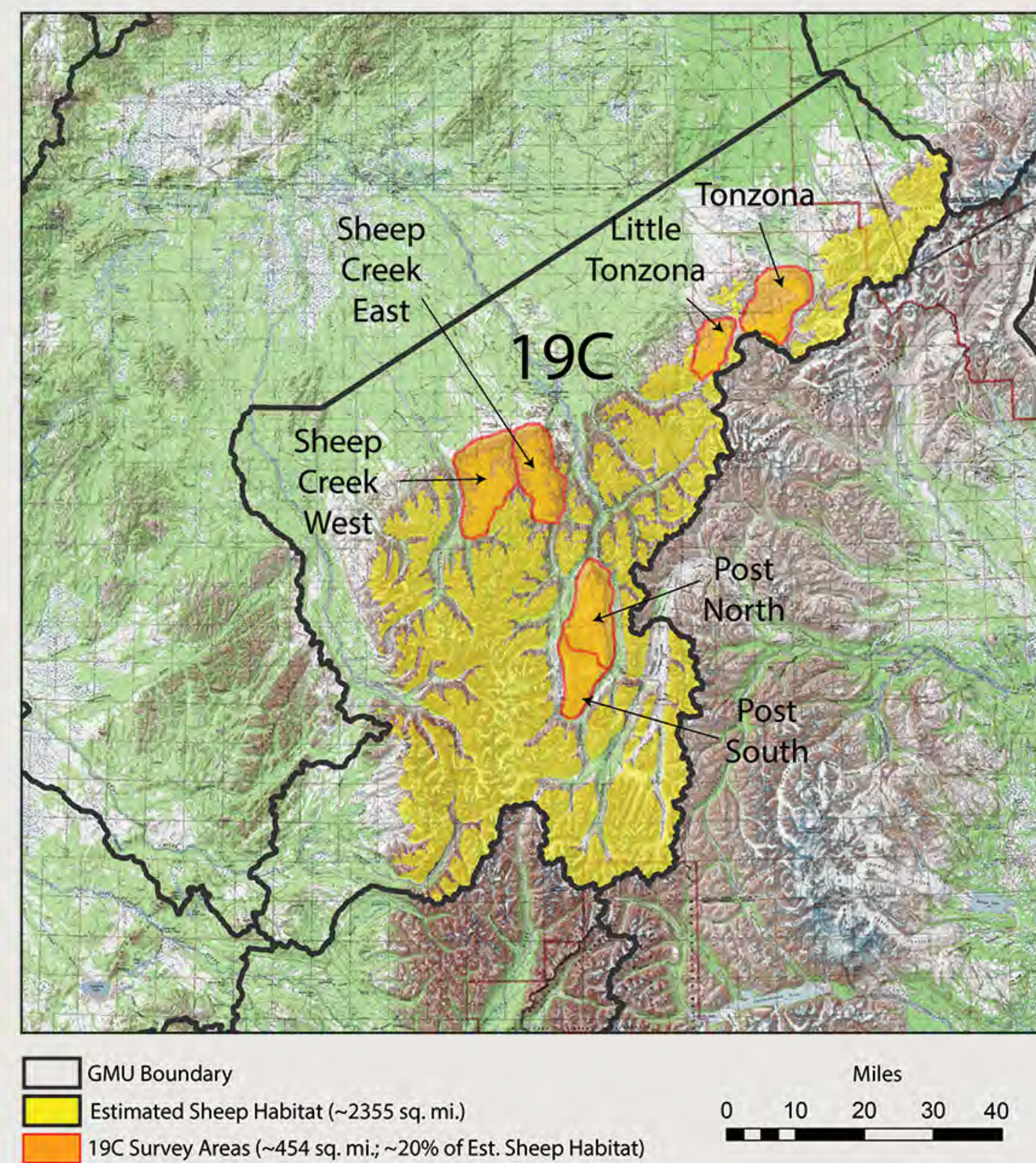
19C Sheep Survey Data

Overview

The sheep survey data presented here reflect surveys across multiple ADF&G offices within Region 3 from (2010-2024). The focus is on GMU 19C and other sheep populations are included to provide a regional comparison of sheep populations in the Alaska Range. Timeseries of lambs:100 ewe-like sheep provide a proxy for lamb production, but do not incorporate annual lamb survival and recruitment into the adult age class. Accordingly, changes of the ewe-like cohort over time serve as the best proxy for recruitment of lambs into the adult population. All data are preliminary and subject to change.

Table 1. Cumulative 19C Aerial Survey Data

	2010	2013	2014	2015	2016	2017	2019	2023	2024
Approx. Area (mi ²)	453	453	453	453	453	453	453	453	453
Total Rams	348	268	374	301	255	343	202	98	101
Legal Rams	56	60	55	46	53	60	33	13	16
Sublegal Rams	292	208	319	255	202	283	169	85	89
"Ewes"	864	490	639	499	593	697	390	242	247
Lambs	287	94	168	167	195	266	178	73	120
Lambs:100 "Ewes"	33	19	26	33	33	38	46	30	49
Rams:100 "Ewes"	40	55	59	60	43	49	52	40	41
Legal Rams:100 "Ewes"	6	12	9	9	9	9	8	5	7
Sublegal Rams:100 "Ewes"	34	42	50	51	34	41	43	35	36
% Lambs	19	11	14	17	19	20	23	18	25
% Rams	23	31	32	31	24	26	26	24	21
% Legal Rams	4	7	5	5	5	5	4	3	3
% Sublegal Rams	19	24	27	26	19	22	22	21	19
Total Sheep	1499	852	1181	967	1043	1306	770	413	473



Regional Comparisons and Cohort Specific Trends

Total Sheep Counted : 2010-2024

Data preliminary and subject to change

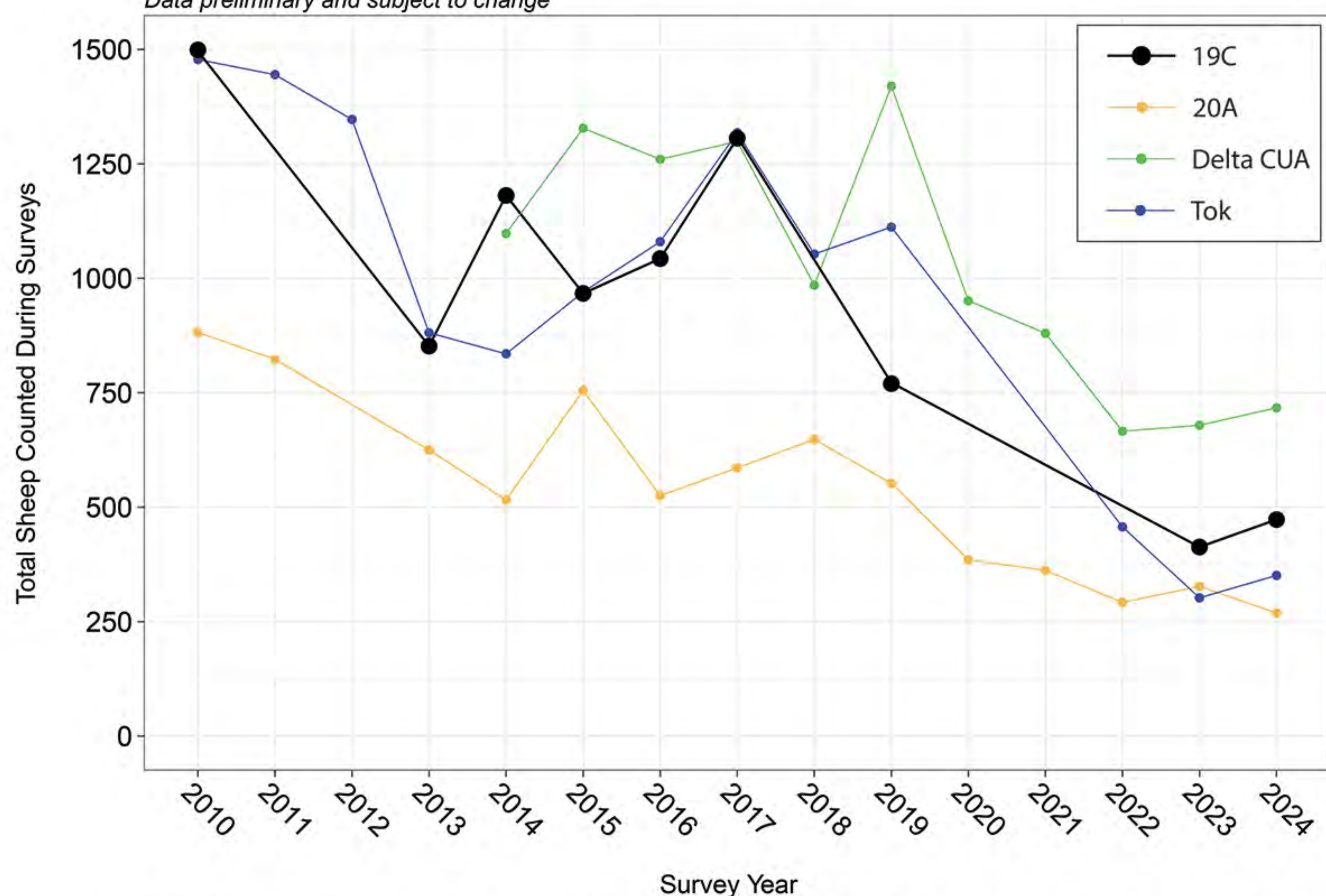


Figure 1. Total sheep counted on sheep trend-composition surveys in Unit 19C, Unit 20A, the Delta Controlled Use Area (CUA), and Tok (2010-2024). Unit 19C sheep are shown in large black points and bold lines and other Alaska Range herds are shown as small points for regional comparison. Line connect consecutive years where surveys were conducted. Some survey years may include incomplete survey coverage due to weather or pilot availability.

Percent of Observed Sheep That Were Rams: 2010-2024

Data preliminary and subject to change

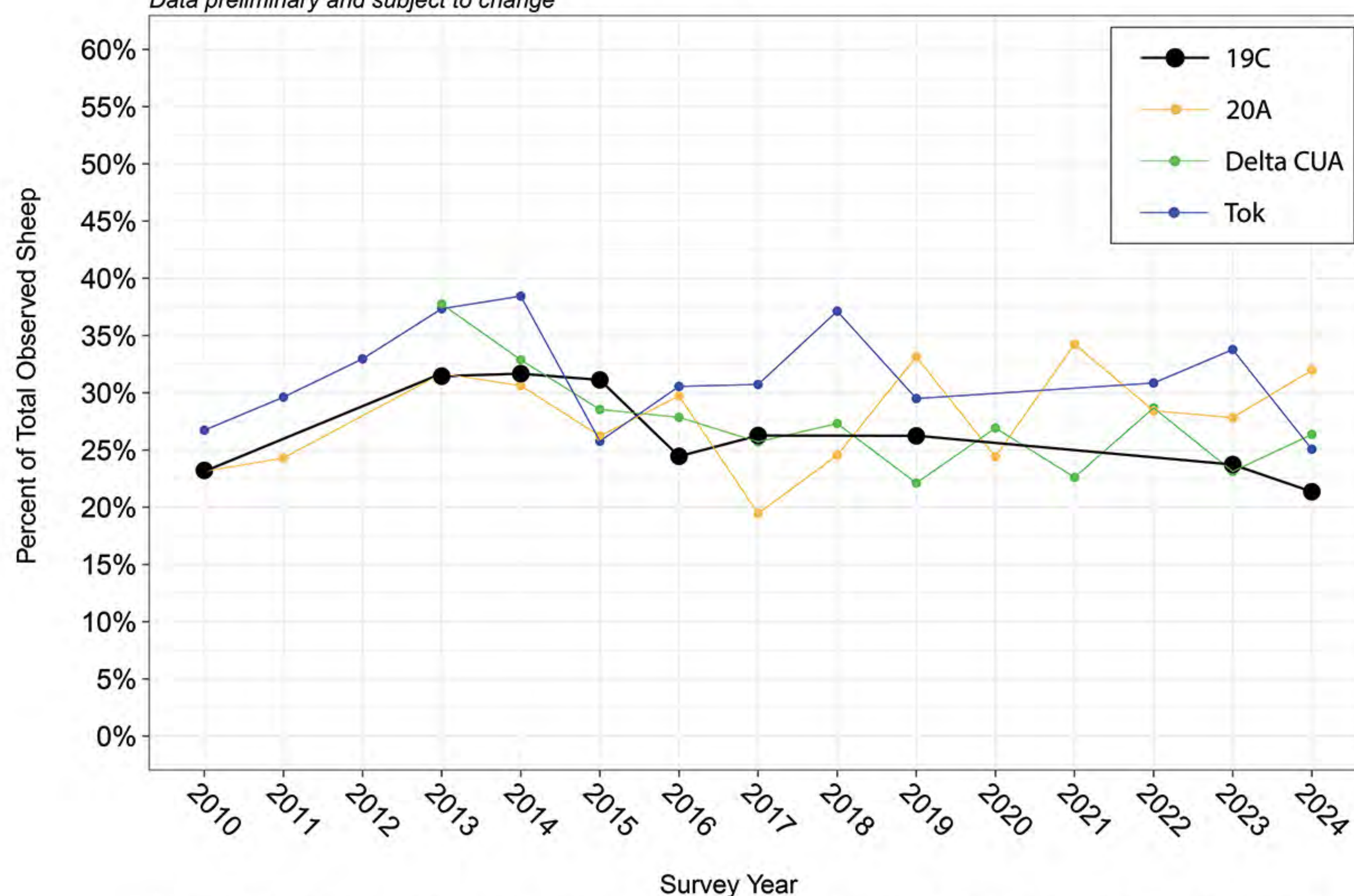


Figure 2. Percent of total sheep counted on sheep trend-composition surveys in Unit 19C, Unit 20A, the Delta Controlled Use Area (CUA), and Tok (2010-2024) that were rams. Unit 19C sheep are shown in large black points and bold lines and other Alaska Range herds are shown as small points for regional comparison. Line connect consecutive years where surveys were conducted. Some survey years may include incomplete survey coverage due to weather or pilot availability.

Total 'Ewe like' Sheep: 2010-2024

Data preliminary and subject to change

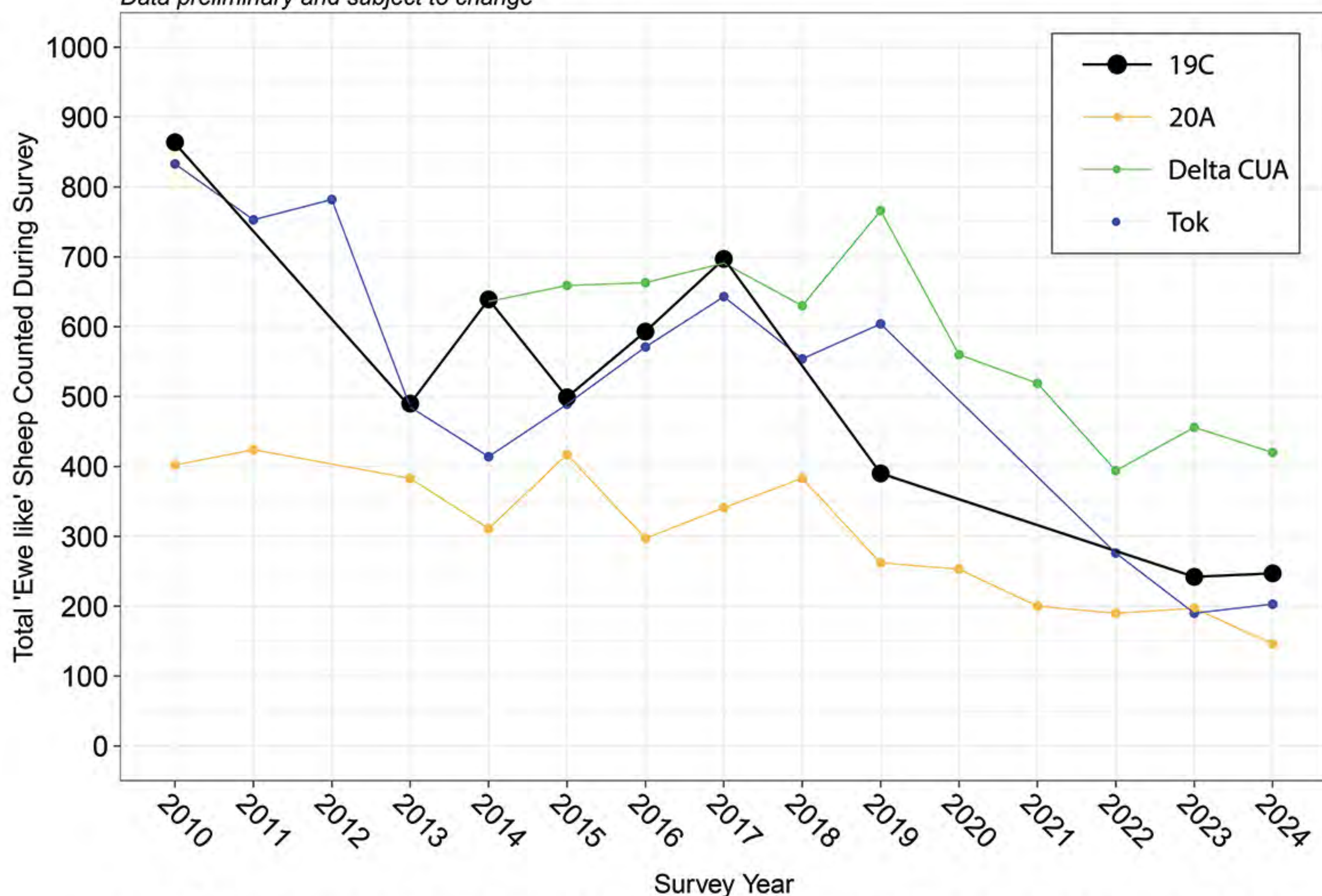


Figure 3. Total "ewe-like" sheep counted on sheep trend-composition surveys in Unit 19C, Unit 20A, the Delta Controlled Use Area (CUA), and Tok (2010-2024). Unit 19C sheep are shown in large black points and bold lines and other Alaska Range herds are shown as small points for regional comparison. Line connect consecutive years where surveys were conducted. Some survey years may include incomplete survey coverage due to weather or pilot availability.

Lambs per 100 'Ewe like': 2010-2024

Data preliminary and subject to change

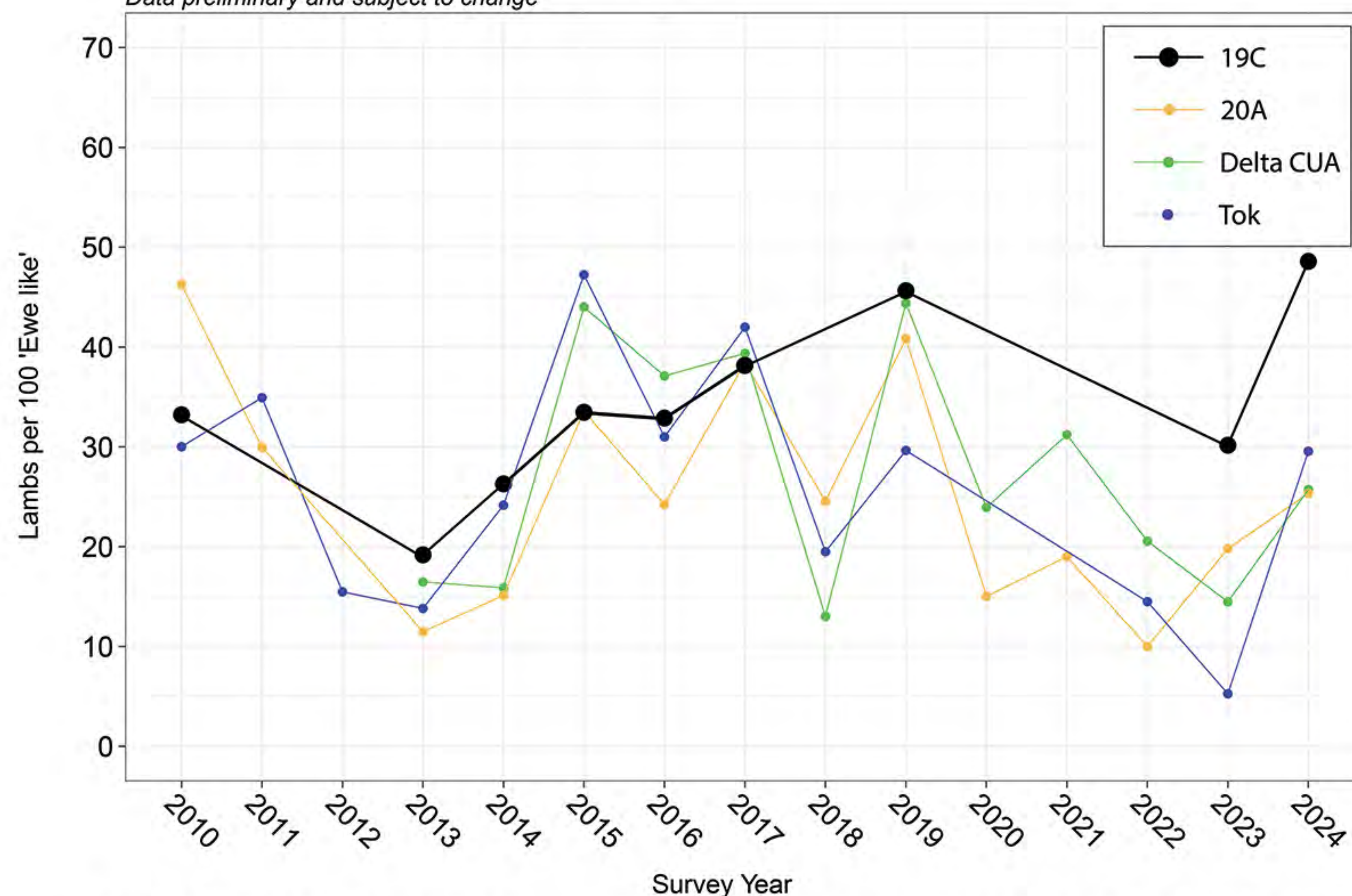


Figure 4. Lambs per 100 "ewe-like" sheep counted on sheep trend-composition surveys in Unit 19C, Unit 20A, the Delta Controlled Use Area (CUA), and Tok (2010-2024). Unit 19C sheep are shown in large black points and bold lines and other Alaska Range herds are shown as small points for regional comparison. Line connect consecutive years where surveys were conducted. Some survey years may include incomplete survey coverage due to weather or pilot availability.