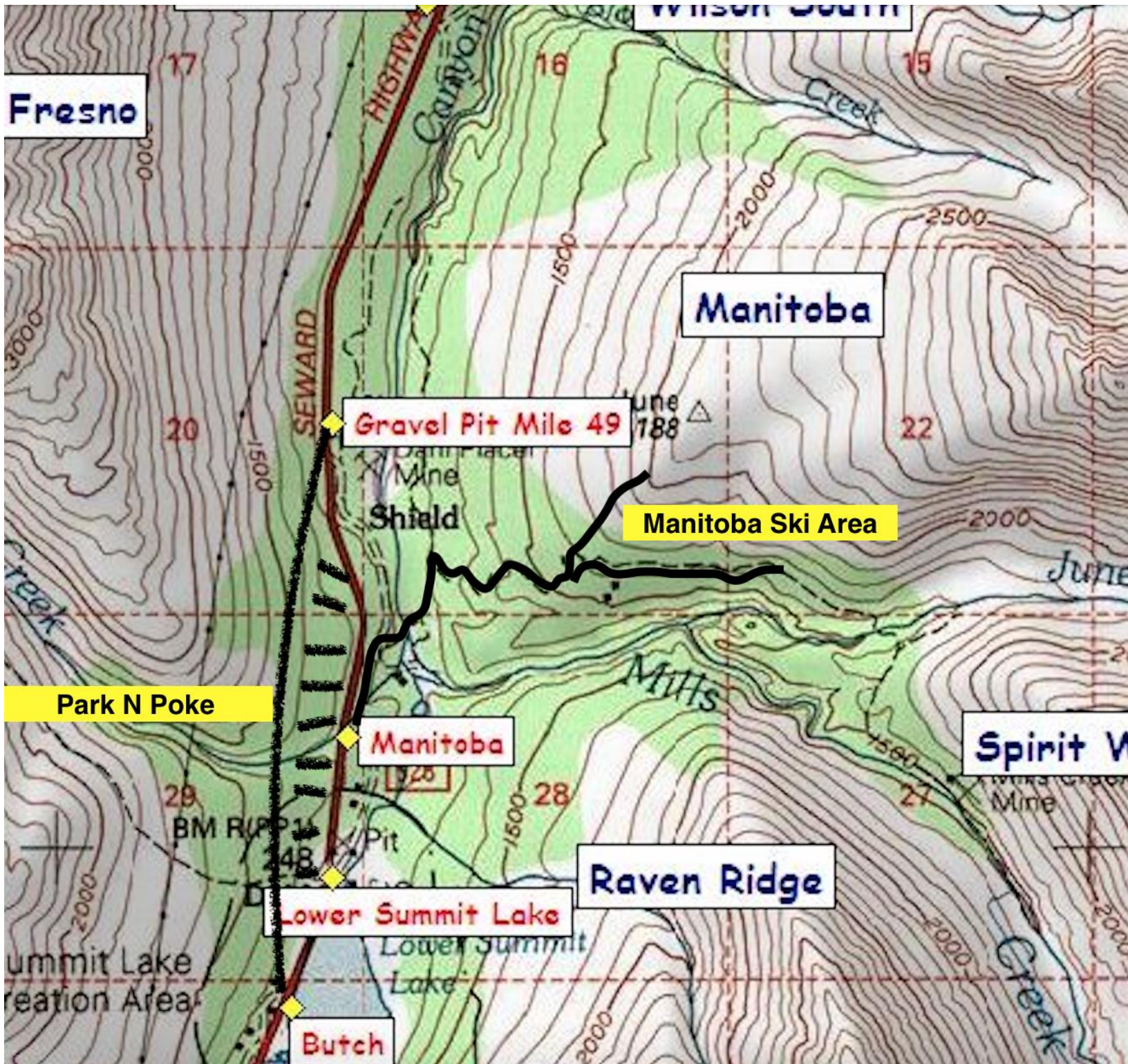


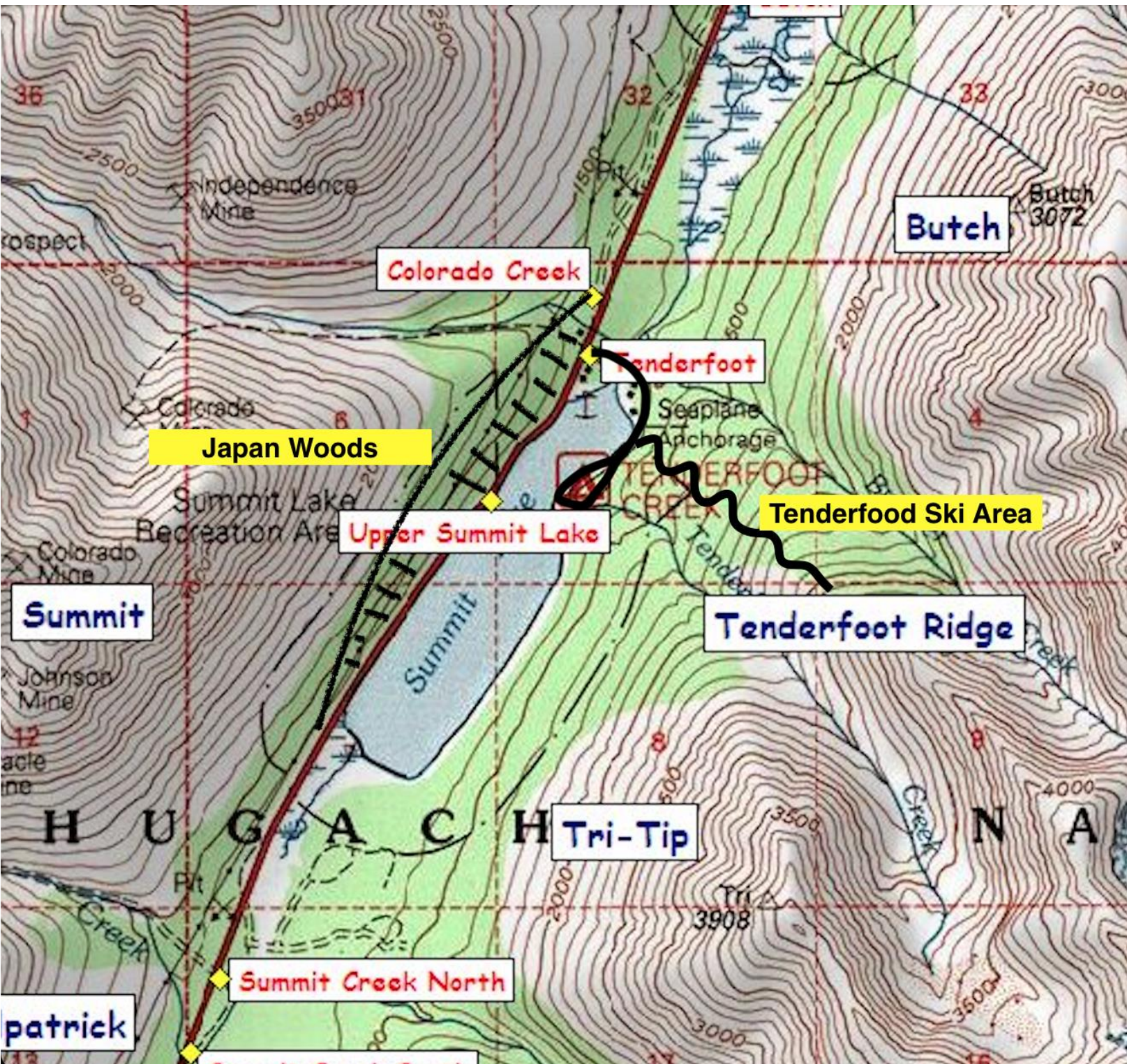
# Summit Lake Recreation Area

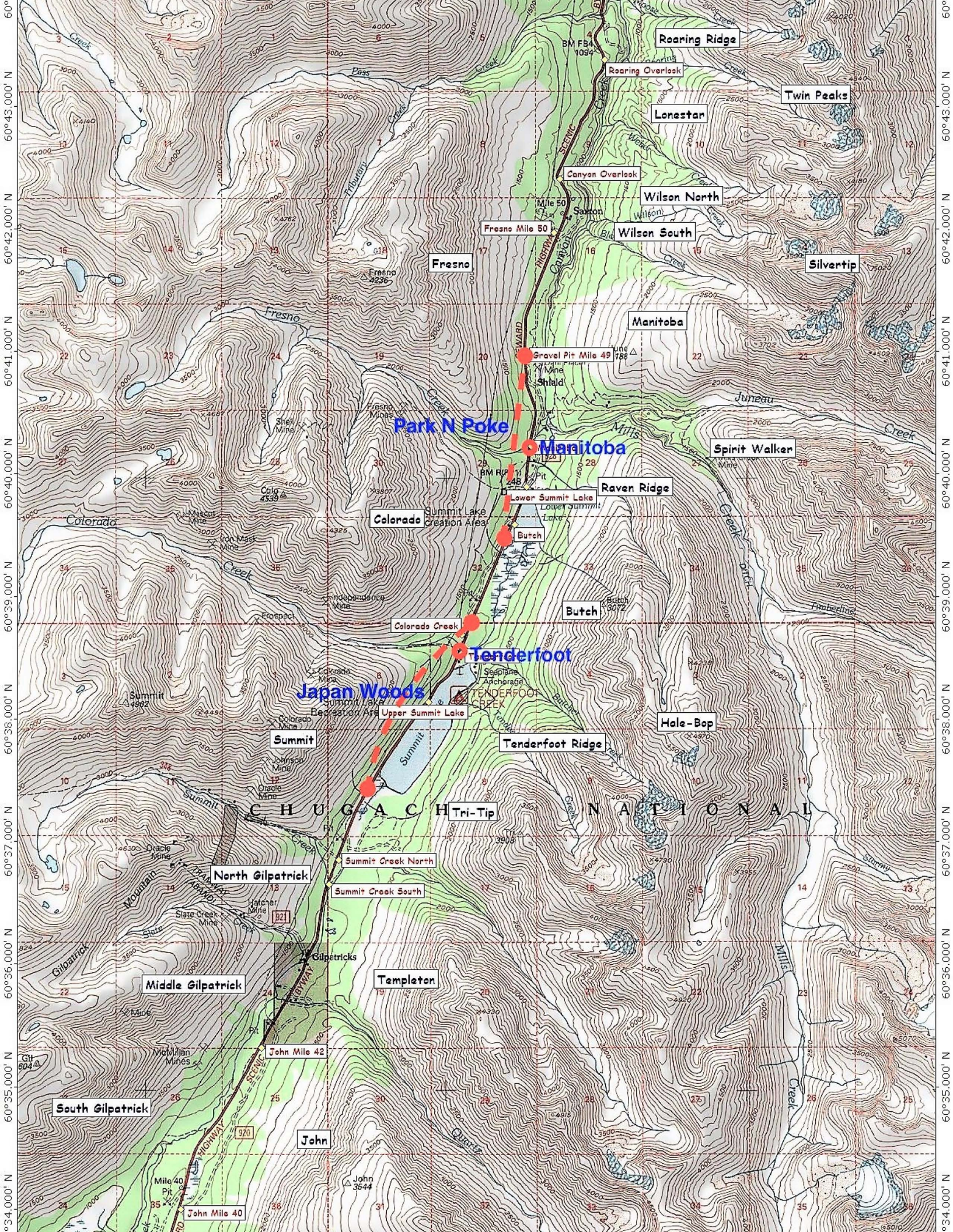
-Trap setbacks of 100yds on black areas/trails indicated for the Park N Poke  
Poke and Manitoba Ski Area



# Summit Lake Recreation Area

-Trap setbacks of 100yds on black areas/trails indicated for the Japan Woods and Tenderfoot Ski Area.





Roaring Ridge

Roaring Overlook

Twin Peaks

Lonestar

Wilson North

Wilson South

Silvertip

Manitoba

Fresno

Park N Poke

Manitoba

Spirit Walker

Raven Ridge

Colorado

Summit Lake Creation Area

Burch

Burch

Tenderfoot

Japan Woods

Tenderfoot Ridge

Hale-Bop

CHUGACH NATIONAL MONUMENT

North Gilpatrick

Summit Creek North

Summit Creek South

Middle Gilpatrick

Templeton

South Gilpatrick

John

John Mile 40

John Mile 42

John Mile 44

John Mile 49

John Mile 50

John Mile 51

John Mile 52

John Mile 53

John Mile 54

John Mile 55

John Mile 56

John Mile 57

John Mile 58

John Mile 59

John Mile 60

John Mile 61

John Mile 62

John Mile 63

John Mile 64

John Mile 65

John Mile 66

John Mile 67

John Mile 68

John Mile 69

John Mile 70

John Mile 71

John Mile 72

John Mile 73

John Mile 74

John Mile 75

John Mile 76

John Mile 77

John Mile 78

John Mile 79

John Mile 80

John Mile 81

John Mile 82

John Mile 83

John Mile 84

John Mile 85

John Mile 86

John Mile 87

John Mile 88

John Mile 89

John Mile 90

John Mile 91

John Mile 92

John Mile 93

John Mile 94

John Mile 95

John Mile 96

John Mile 97

John Mile 98

John Mile 99

John Mile 100

**File Code:** 1500; 2630

**Date:** April 29, 2025

Alaska Board of Game  
Boards Support Section  
P.O. Box 115526  
Juneau, Alaska 99811-5526

Dear Alaska Board of Game,

The United States Forest Service-Chugach National Forest would like to submit the following comments in support of Proposals submitted by the Cooper Landing Safe Trails Committee to establish trapping setbacks from heavily used recreation areas and to require signs be posted at all active trapping access points in Unit 7.

Year-round outdoor recreation is an important and growing segment of the Cooper Landing area's economy. As the amount of winter recreation has increased over the past 20 years, so has the number of encounters between user groups and traps set in recreational areas. Many of these areas occur on Forest Service lands.

The proposals include 100-yard setbacks from the most popular and heavily used multi-use trails, campgrounds, roads, pullouts, and beaches that are in the Cooper Landing area as well as areas of the Summit Lake Recreation Area. Trapping setbacks would establish safe zones for user groups accessing these areas for: cross-country skiing, backcountry skiing, snowboarding, snowshoeing, ice fishing, hiking, fat tire biking, dog mushing, snow machining, bird hunting, cabin rentals, and more.

The Forest Service strives to fairly manage the land for all uses balancing commercial, recreational, personal, and subsistence uses across our public lands. Our National Forest is multi-use and balancing those uses at times becomes difficult with opposing views and this issue is one of those that all parties have the right to continue using the Forest for their needs. The goal of these proposals is to establish safe corridors for recreation users with their families and pets, while still allowing trapping beyond a modest buffer.



For the reasons mentioned above, Chugach NF supports establishing effective regulatory measures including trapping setbacks and signs posted at all access points of active trapping along high use trails and recreation areas in Unit 7.

Thank you for the opportunity to share the Chugach NF comments on this proposal. If there are questions, please contact me at 907-288-7730 or by e-mail at [ruth.damico@usda.gov](mailto:ruth.damico@usda.gov).

Sincerely,

RUTH L. D'AMICO  
District Ranger